



FILE NO: CH071655		COMPANY: WPX ENERGY INC	
API NO: 05046218170000		WELL: GOLDSBOROUGH PA 511-11	
Ver. 3.87		FIELD: PARACHUTE	
PAID: PA 22-11 S11 T75 R30W RIG: CYCLONE 17		COUNTY: GARFIELD	
LOCATION: S11: 2402' FNL 2037' FNL B11: 1103' FNL 639' FNL		STATE: CO	
SEC: 11 TWP: 7S RGE: 9SW		OTHER SERVICES: CBL	
PERMANENT DATUM: LOG MEASURED FROM DRILL MEAS. FROM		ELEVATIONS: KB 6300 FT DF 6300 FT OL 6274 FT	
G.L.: _____ ELEVATION: 6274 FT K.B.: _____ ABOVE P.D.: _____ K.B.: _____			
DATE:	TRIP:		
RUN	1		
SERVICE ORDER	624390		
DEPTH DRILLER	8064 FT		
DEPTH LOGGER	8060 FT		
BOTTOM LOGGED INTERVAL	8040 FT		
TOP LOGGED INTERVAL	4511 FT		
TIME STARTED	1130		
TIME FINISHED	1700		
OPERATOR RIG TIME	5.5 HRS		
TYPE OF FLUID IN HOLE	WATER		
FLUID DENSITY	NA		
FLUID SALINITY	NA		
FLUID LEVEL	70 FT		
LOGGED CELENT TOP	NA		
WELLHEAD PRESSURE	0 PSI		
MAXIMUM HOLE DEVIATION	NA		
NOMINAL LOGGING SPEED	10 F/MIN		
MAX. RECORDED TEMP.	220 DEGF		
REFERENCE LOG	BAKER HUGHES BOND LOG		
REFERENCE LOG DATE	5-MAY-2013		
EQUIP. NO.	6670	GRAND JUNC	
RECORDED BY	RENEAU/SMITH		
WITNESSED BY	FRANK MOORE		

IN MAKING INTERPRETATIONS OF LOGS OUR EMPLOYEES WILL GIVE CUSTOMER THE BENEFIT OF THEIR BEST JUDGEMENT. BUT SINCE ALL INTERPRETATIONS ARE OPINIONS BASED ON INFERENCES FROM ELECTRICAL OR OTHER MEASUREMENTS, WE CANNOT, AND WE DO NOT GUARANTEE THE ACCURACY OR CORRECTNESS OF ANY INTERPRETATION. WE SHALL NOT BE LIABLE OR RESPONSIBLE FOR ANY LOSS, COST, DAMAGES, OR EXPENSES WHATSOEVER INCURRED OR SUSTAINED BY THE CUSTOMER RESULTING FROM ANY INTERPRETATION MADE BY ANY OF OUR EMPLOYEES.

BOREHOLE RECORD

BIT SIZE	FROM	TO
13.5 IN	0 FT	1006 FT
8.75 IN	1006 FT	8064 FT

CASING RECORD

SIZE	WEIGHT	GRADE	FROM	TO
4.5 IN	11.6 LB/F	180	0 FT	8064 FT
8.625 IN	32 LB/F		0 FT	1006 FT

REMARKS

RUN 1 TRIP 1: ALL DATA ON THIS LOG IS SHIFTED AND DEPTH WATCHED USING GAMMA RAY CURVE TO THE BAKER HUGHES BOND LOG DATED 5/03/2013 AT THE CLIENT'S REQUEST.

AMOUNT OF LINEAR SHIFT = 4 FT

LOGGED IN PNC-3D MODE

LOGGED WITH ZERO PSI AT WELLHEAD

BHT = 220 DEGREES

SHORT JOINT = 4421'-4441'

THANK YOU FOR CHOOSING BAKER HUGHES WIRELINE SERVICES
CREW: RENEAU/SMITH/COATE/DLSON
RIG: CYCLONE 17

EQUIPMENT DATA

RUN	TRIP	TOOL	SERIES NO.	SERIAL NO.	POSITION
1	1	RPM	8283FA	10180383	FREE
1	1	RPM	8281FA	10180384	FREE
1	1	GR	2812LA	10374382	FREE
1	1	TEL/CCL	8248FA	10286408	FREE
1	1	PCM	8230FA	10387984	FREE
1	1	RPM	8281FA	10460382	FREE

MAIN LOG 5"/100FT SCALE

ECLIPS 6.11 Aug 06, 2010
Updates: 1,2 Patches: 3

Fri May 3 18:44:24 2013

Perplf /main/62

Cplot

Pdf_Cpp /main/16

Fileview 5.61

PARAMETER AND FILTER SUMMARY REPORT

FILE: /data/624390/m353h281202.prm
LOGGING MODE: DEPTH DIRECTION: UP
TOP DEPTH: 4505.750 ft BOTTOM DEPTH: 8059.000 ft

SYMMETRIC FILTER

MEASUREMENT TYPE	PARAMETER	VALUE	UNITS	INTERVAL (ft)	
GR	FILTER ()	medium (1)		TOP	BOTTOM

RPM PROCESSING

MEASUREMENT TYPE	PARAMETER	VALUE	UNITS	INTERVAL (ft)	
PNC Parameters	BOREHOLE CONTENTS	FLUID		TOP	BOTTOM
	OPEN/CASED HOLE	CASED HOLE		"	"
	BOREHOLE SIZE	8.75	1in	"	"
	CASING SIZE	4.50	1in	"	"
	MATRIX	SANDSTONE		"	"
	CORRECTION BUFFER	11		"	"

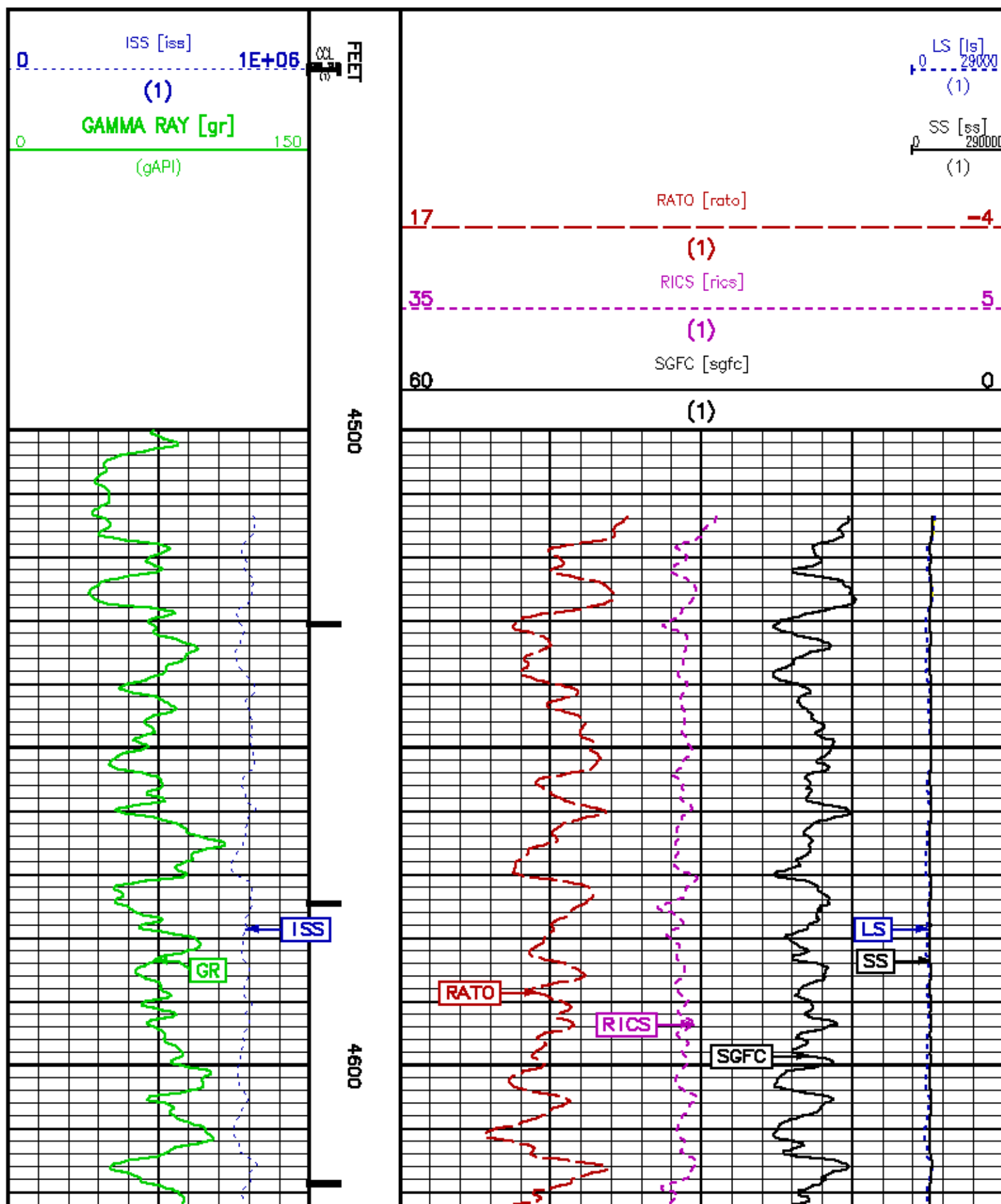
CURVE DESCRIPTION REPORT

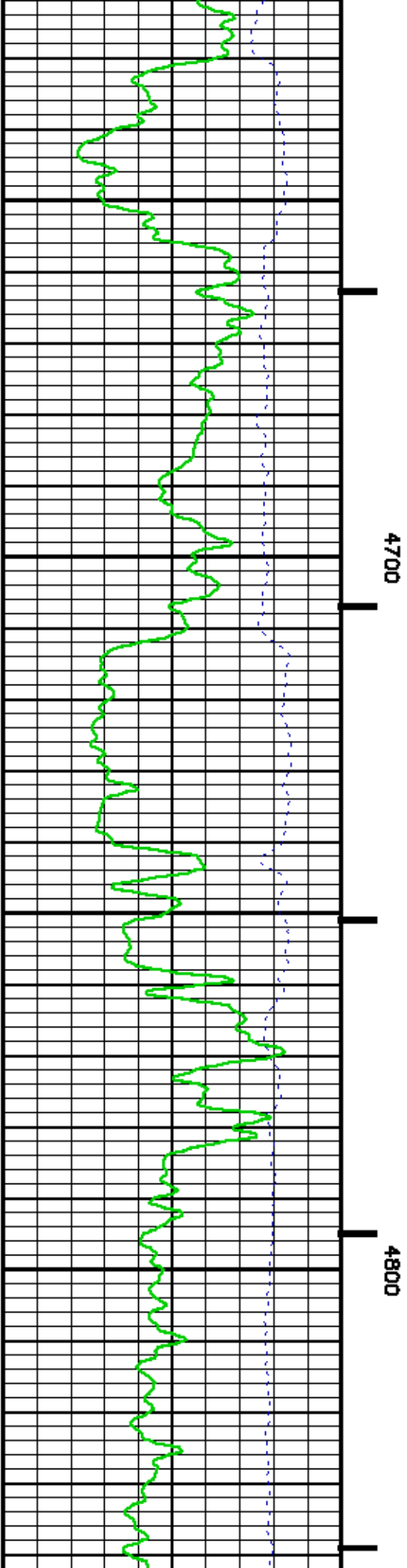
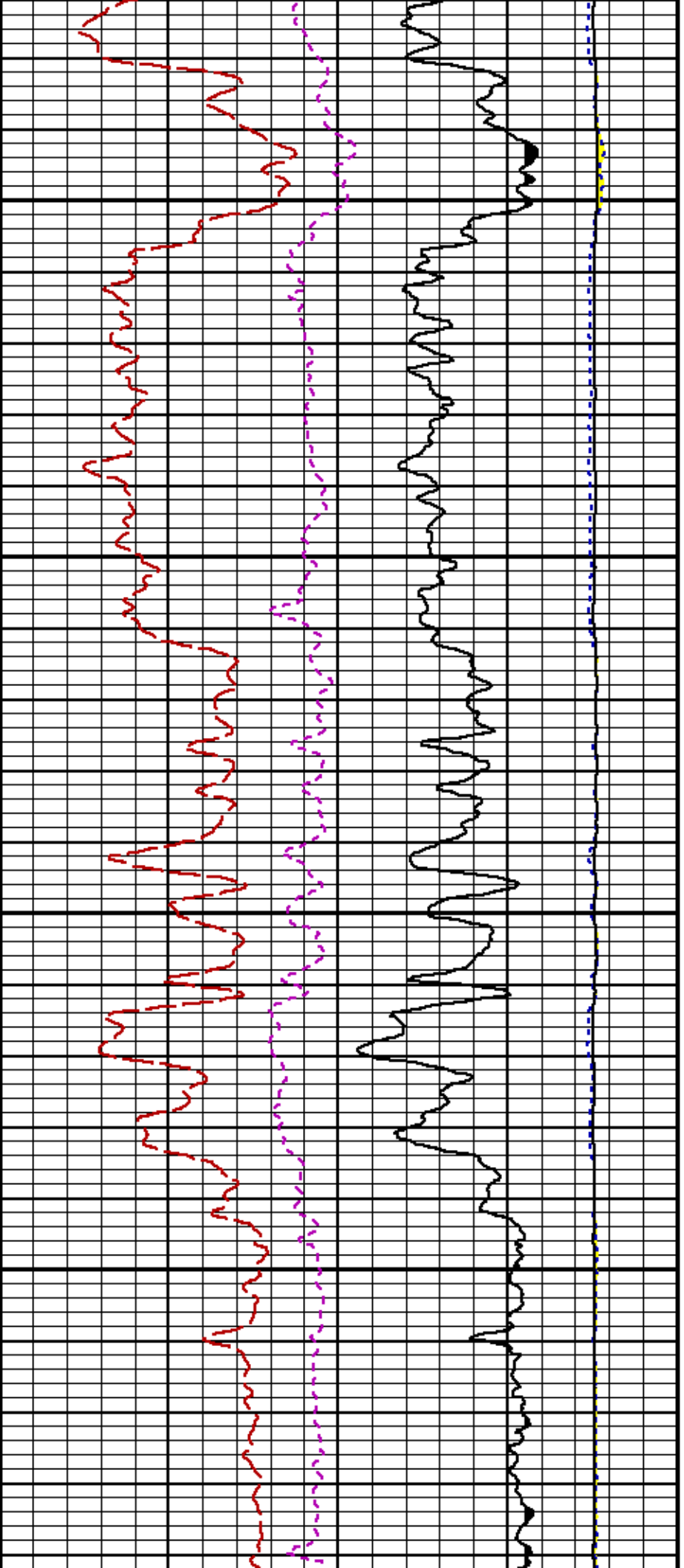
CURVE NAME	CREATION DATE	CURVE DESCRIPTION
F1:CCL	May 3 12:28:21 2013	CASING COLLAR LOCATOR
F1:GR	May 3 12:28:21 2013	GAMMA RAY
F1:ISS	May 3 12:28:21 2013	INELASTIC SHORT SPACE COUNT RATE
F1:LS	May 3 12:28:21 2013	LONG SPACE COUNT RATE
F1:RATO	May 3 12:28:21 2013	SHORT/LONG SPACE COUNT RATE RATIO
F1:RICS	May 3 12:28:21 2013	SHORT SPACE INELASTIC TO CAPTURE COUNT RATE RATIO (ISS/CSS)
F1:SGFC	May 3 12:28:21 2013	CORRECTED FORMATION SIGMA
F1:SS	May 3 12:28:21 2013	SHORT SPACE COUNT RATE

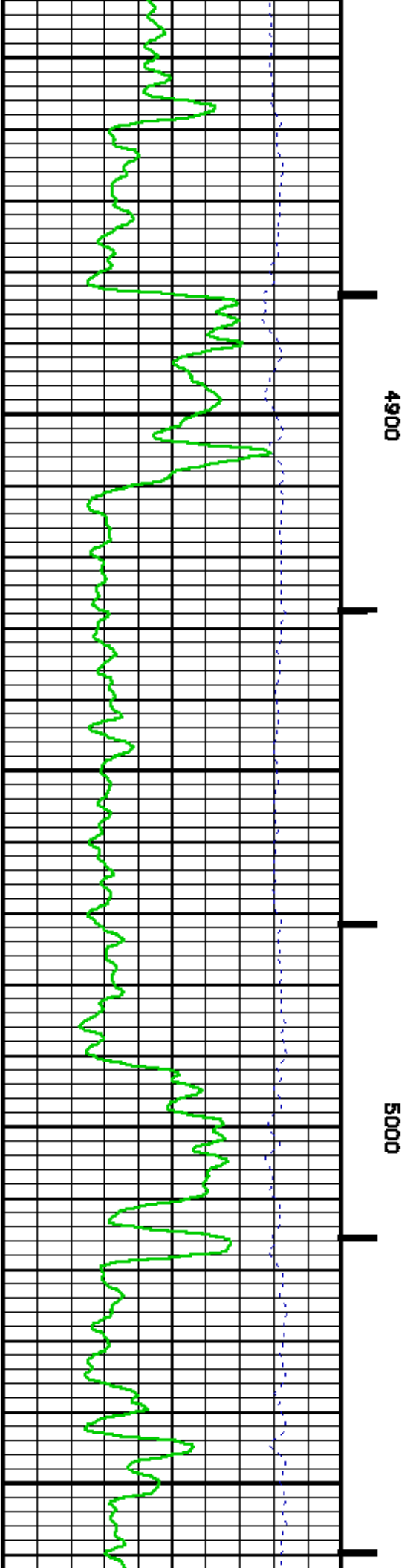
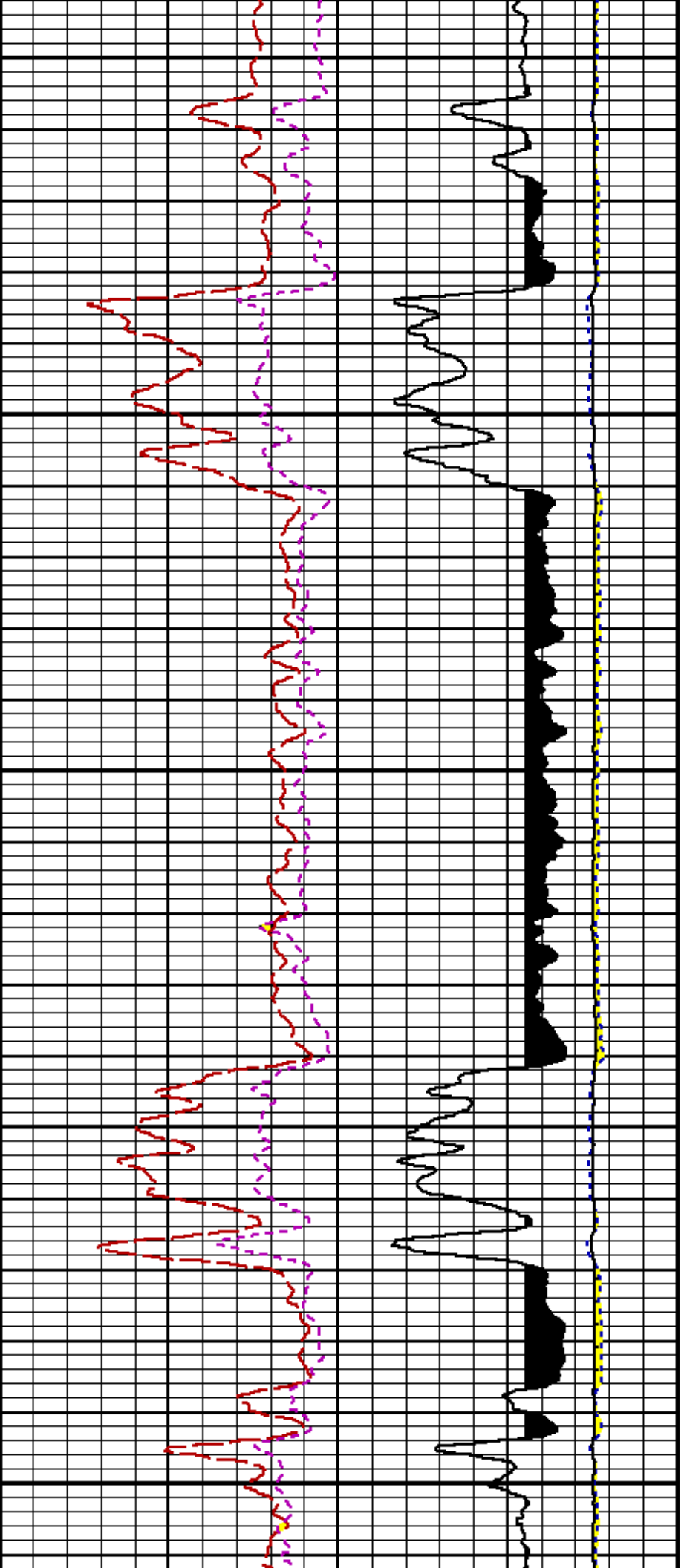
CURVE MEASURE POINT OFFSET

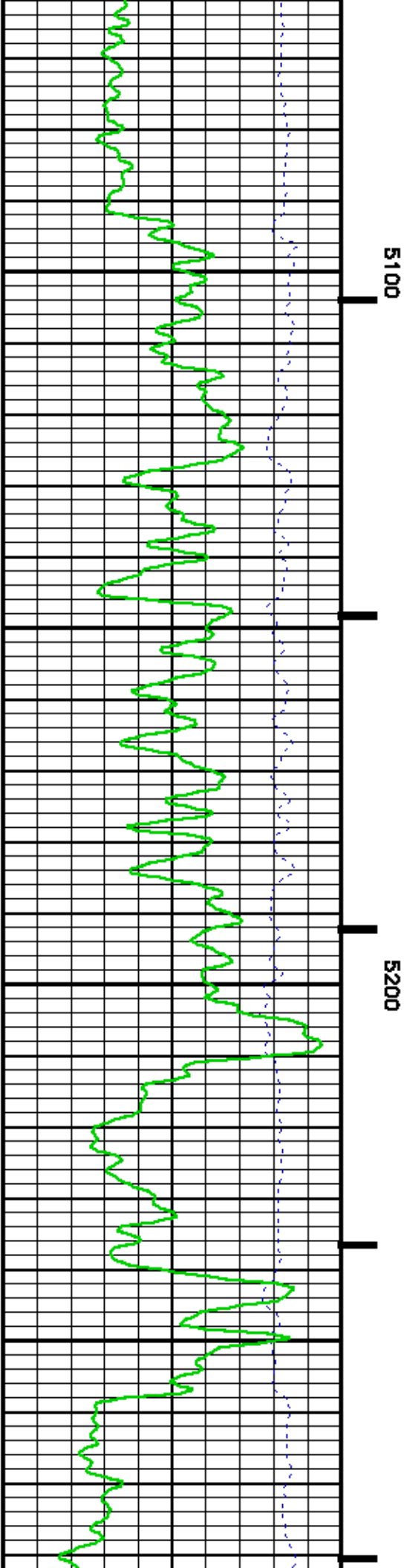
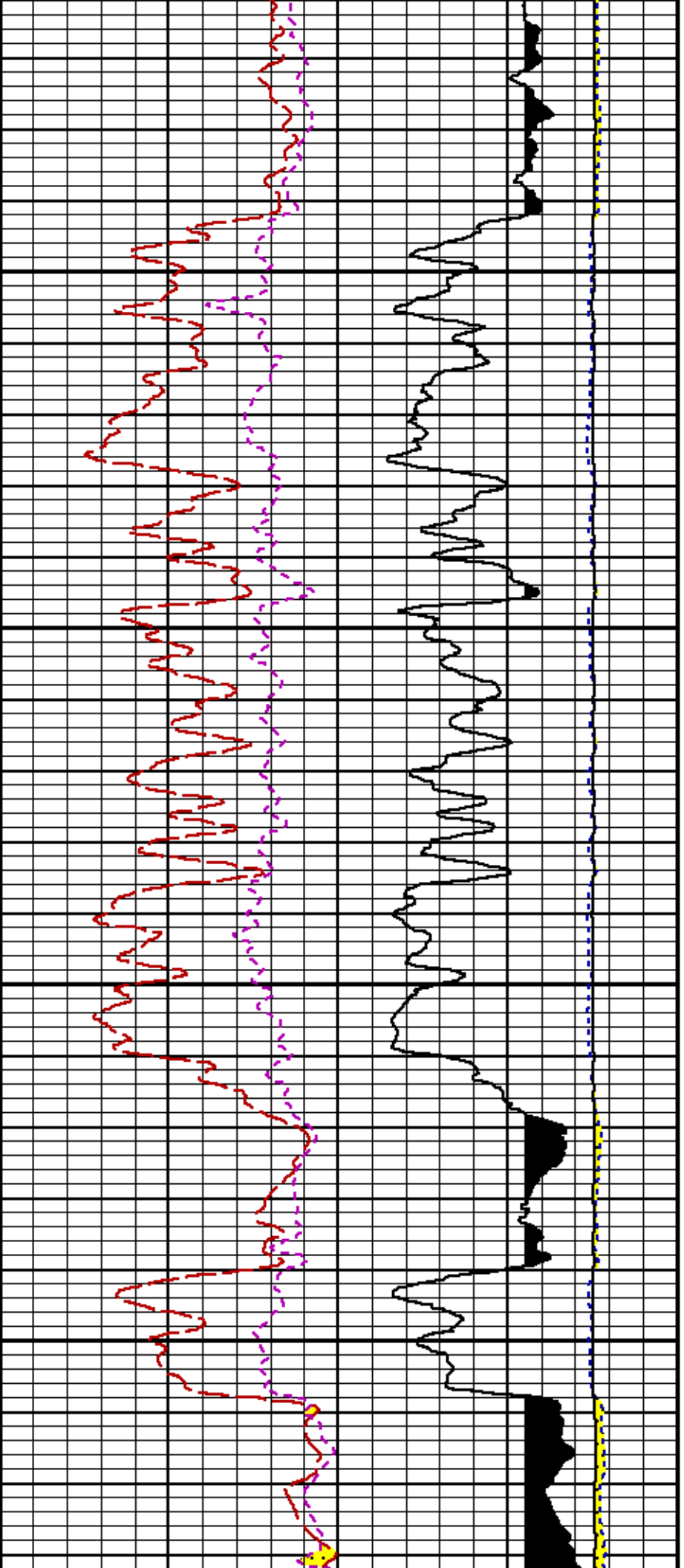
CURVE	OFFSET (ft)	CURVE	OFFSET (ft)	CURVE	OFFSET (ft)	CURVE	OFFSET (ft)
CCL	21.75	ISS	9.50	RATO	9.50	SGFC	9.50
GR	19.25	LS	9.50	RICS	9.50	SS	9.50

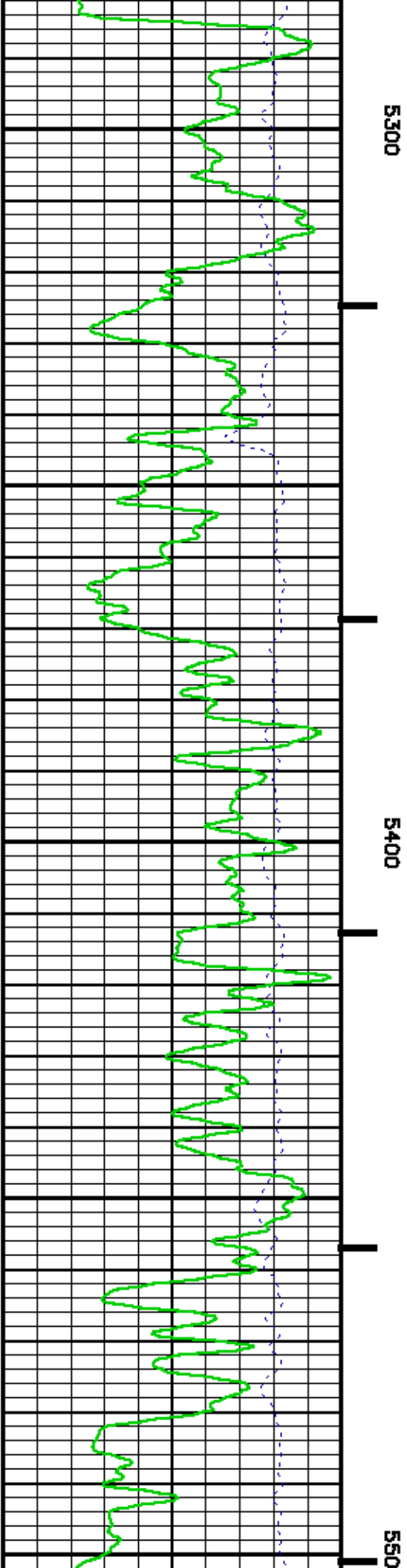
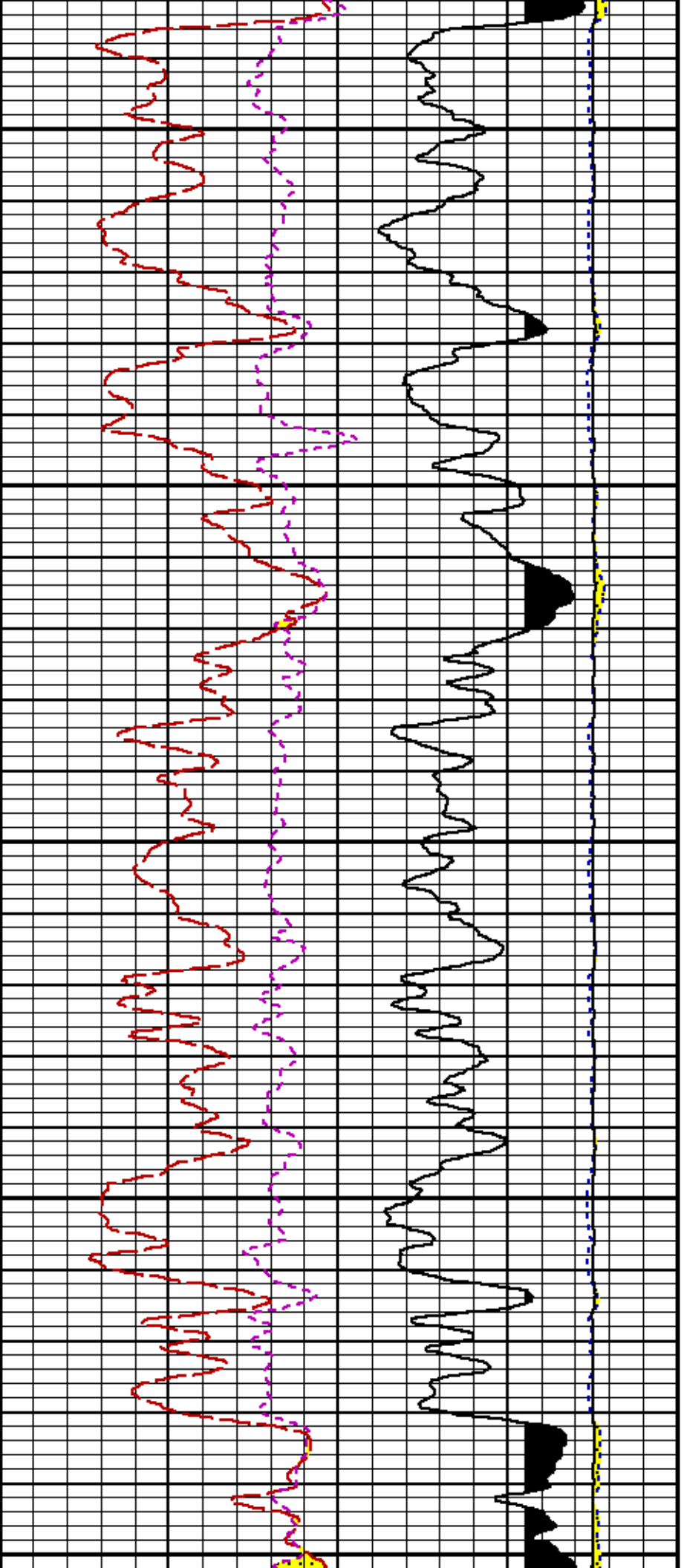
Presentation : HL8670:MAIN_RPM.pdf [5"/100' Scale]
 Plot Interval : 4500 - 8063.5 Feet
 Data File 1 : F1 : HL8670\data/824390/m353h281202.dft
 Created On : May 3 12:28:21 2013
 Company : WPK ENERGY INC
 Well : GOLDSBOROUGH PA 511-11
 Field : PARACHUTE
 File Interval : 4486.5 - 8063.5 Feet
 Out : m353h281

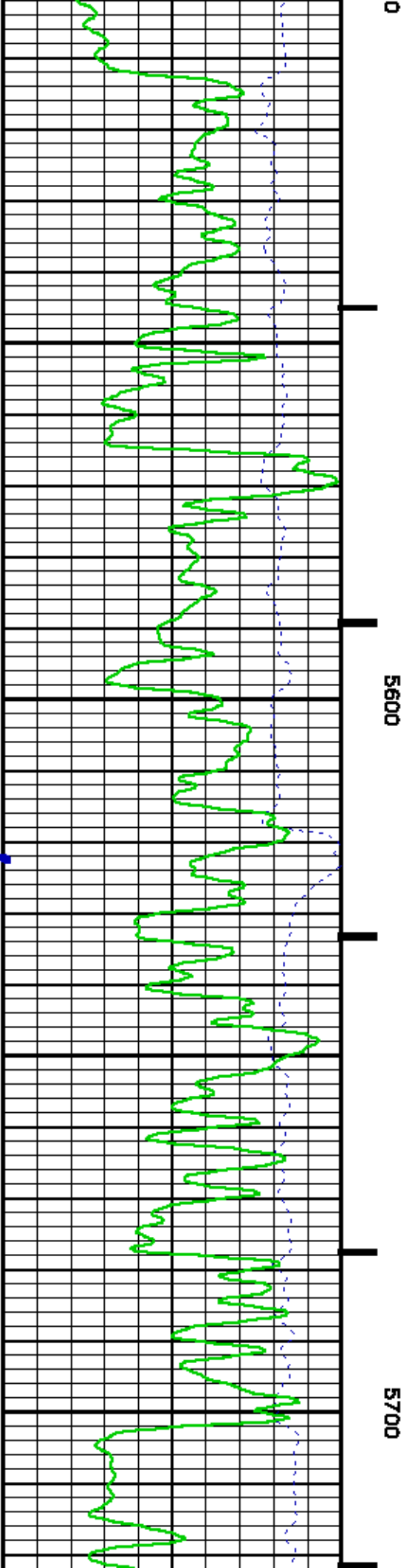
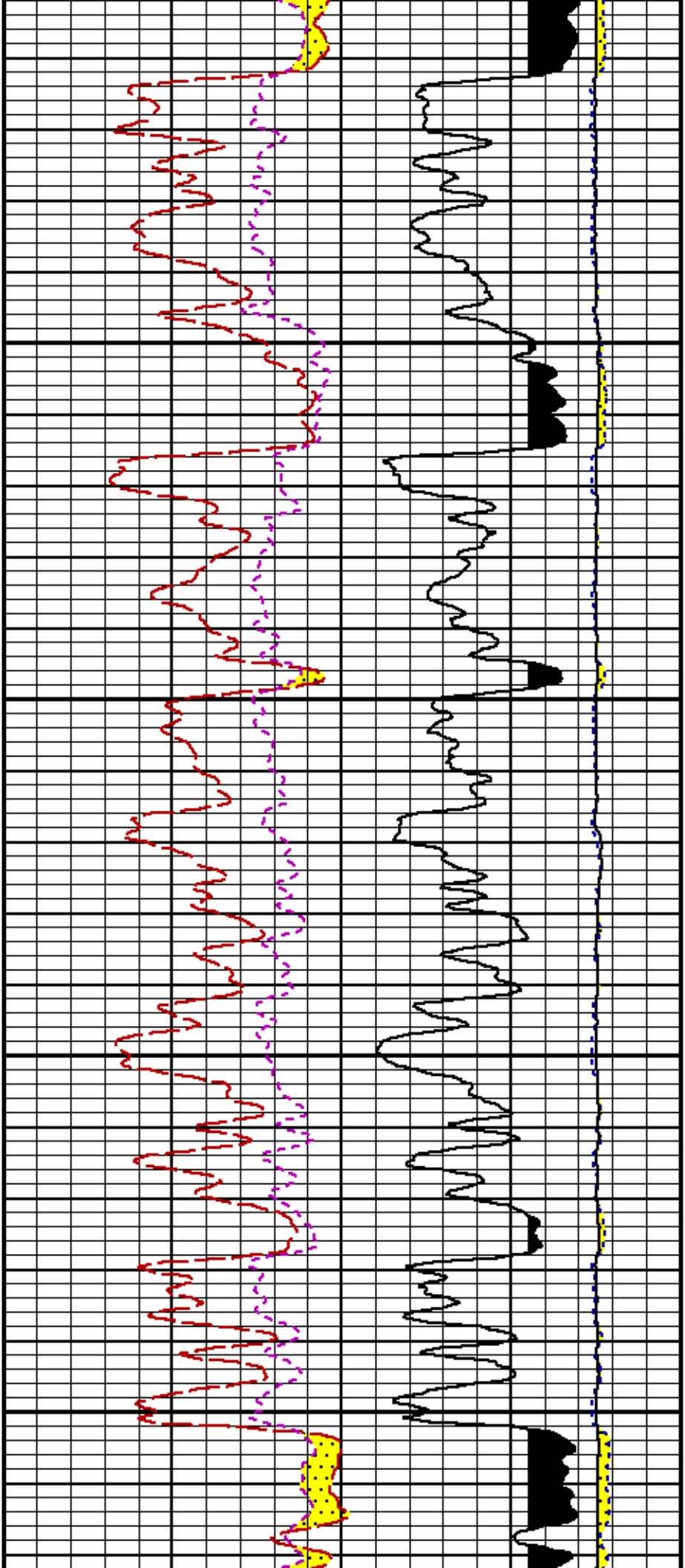


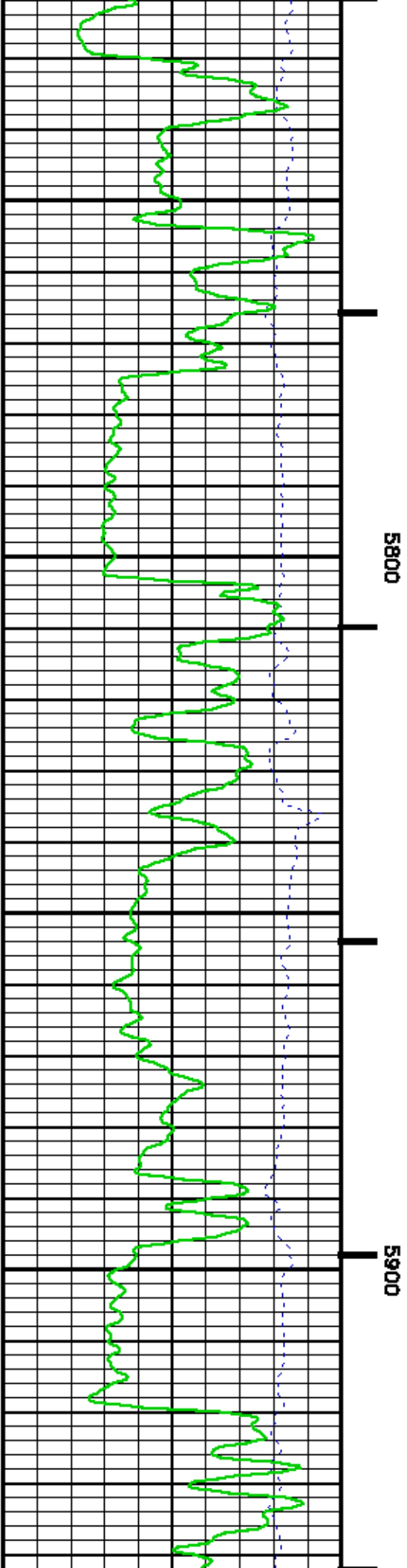
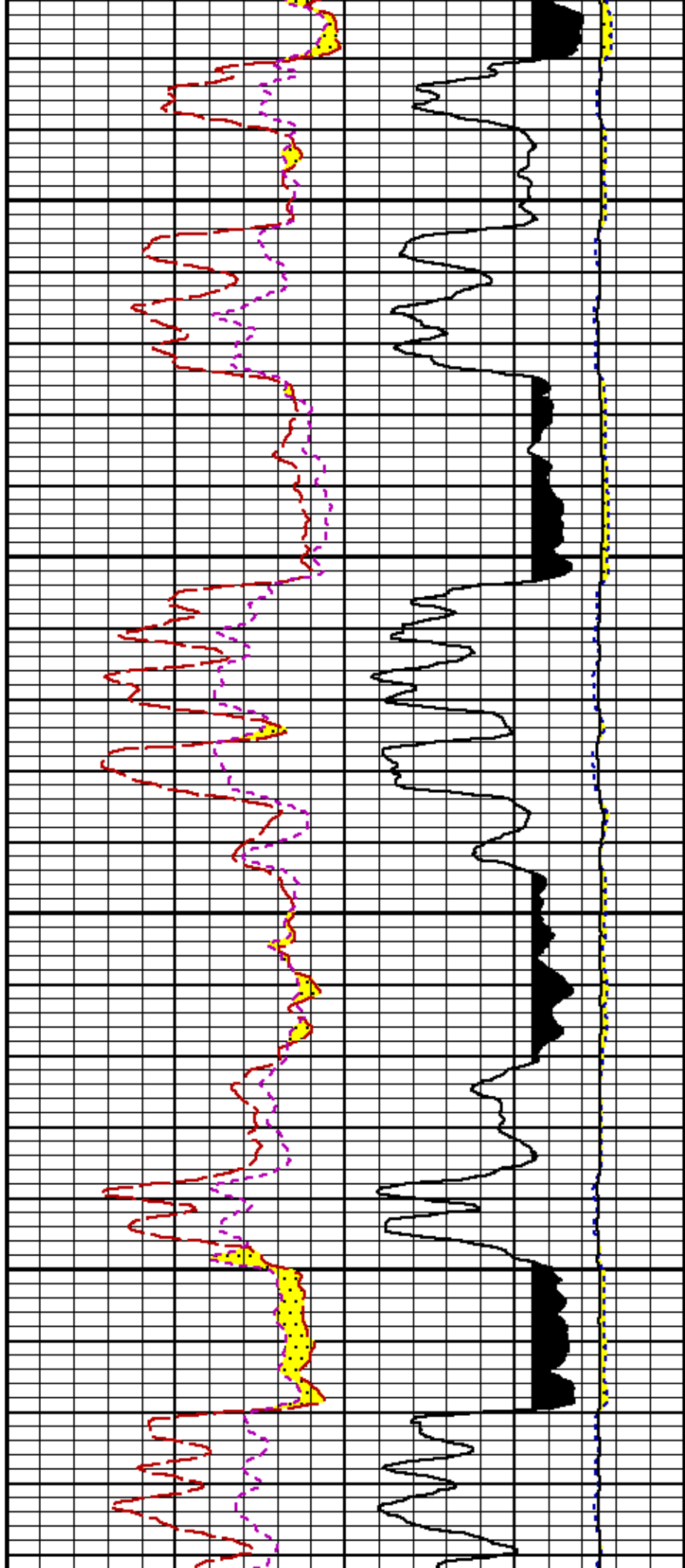


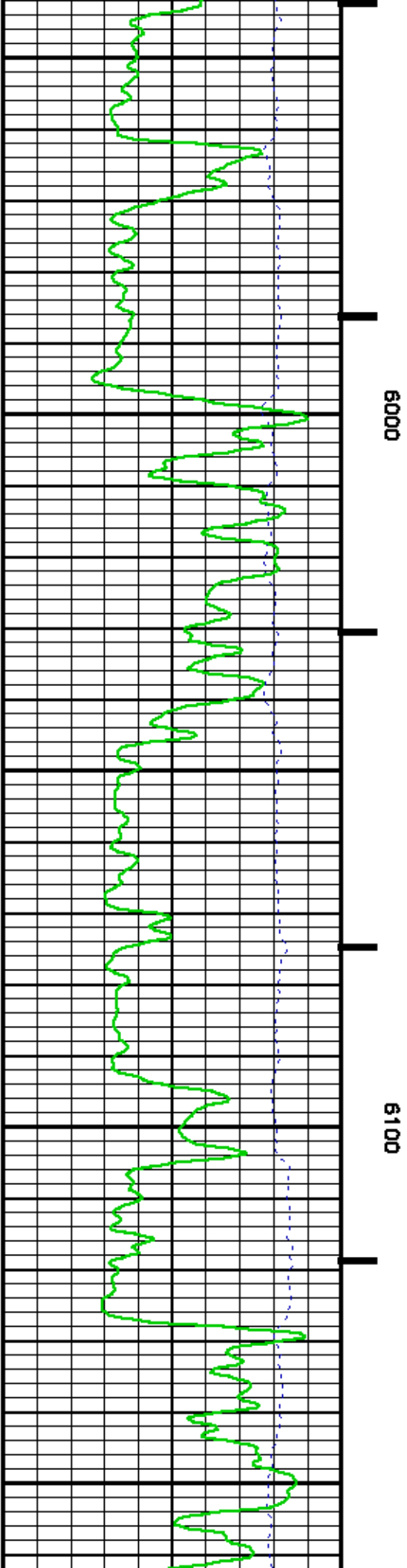
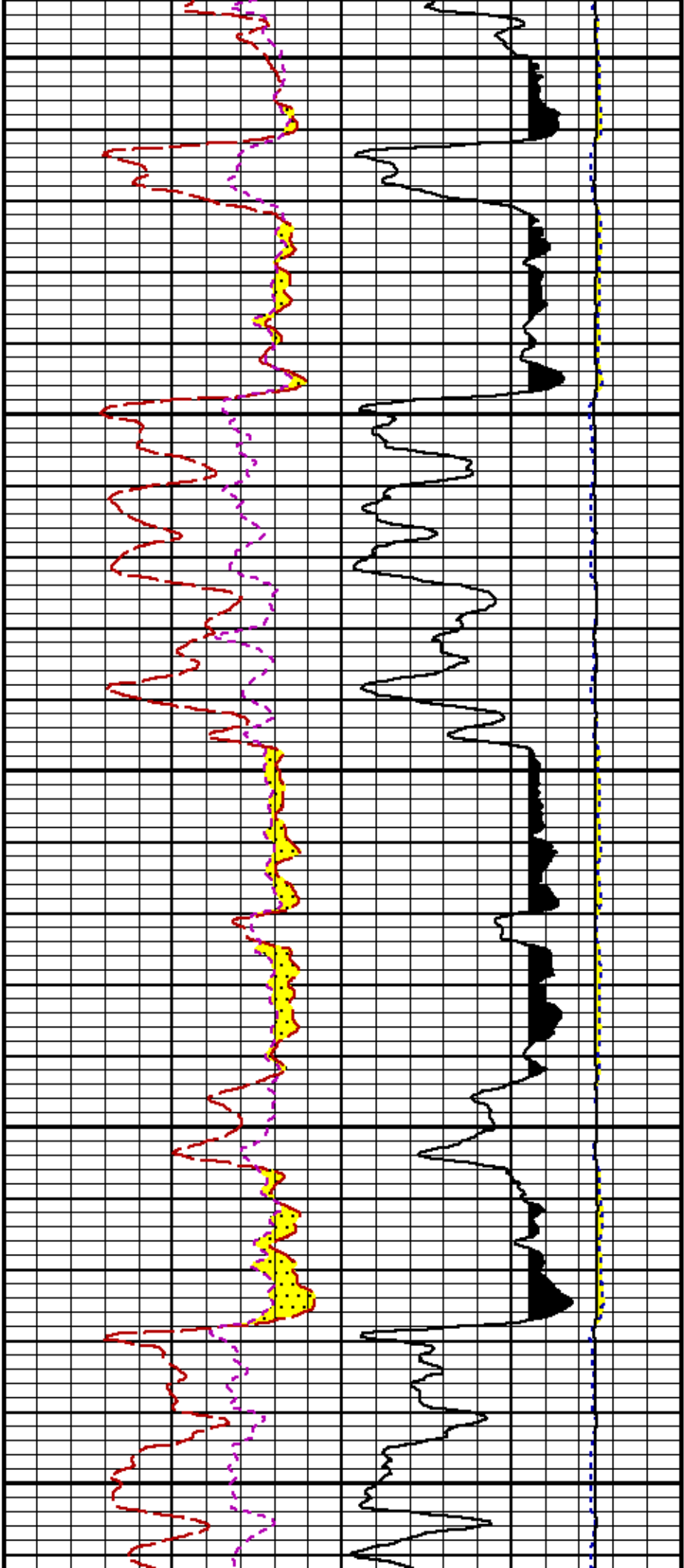


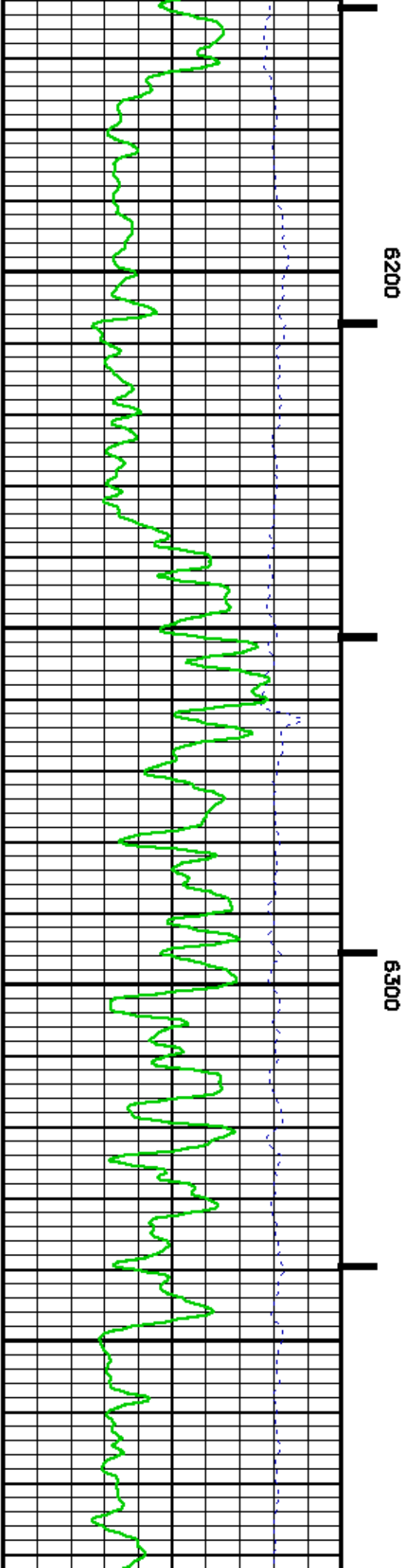
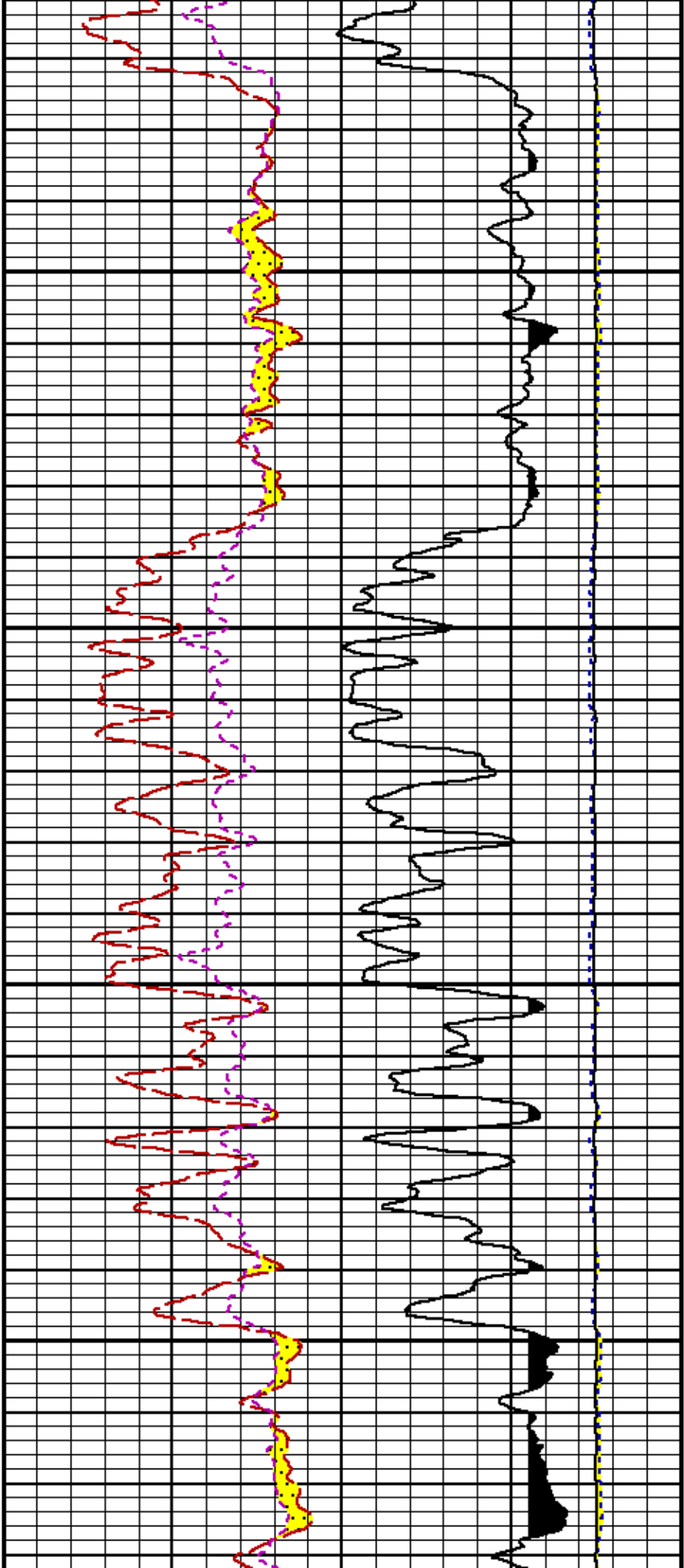


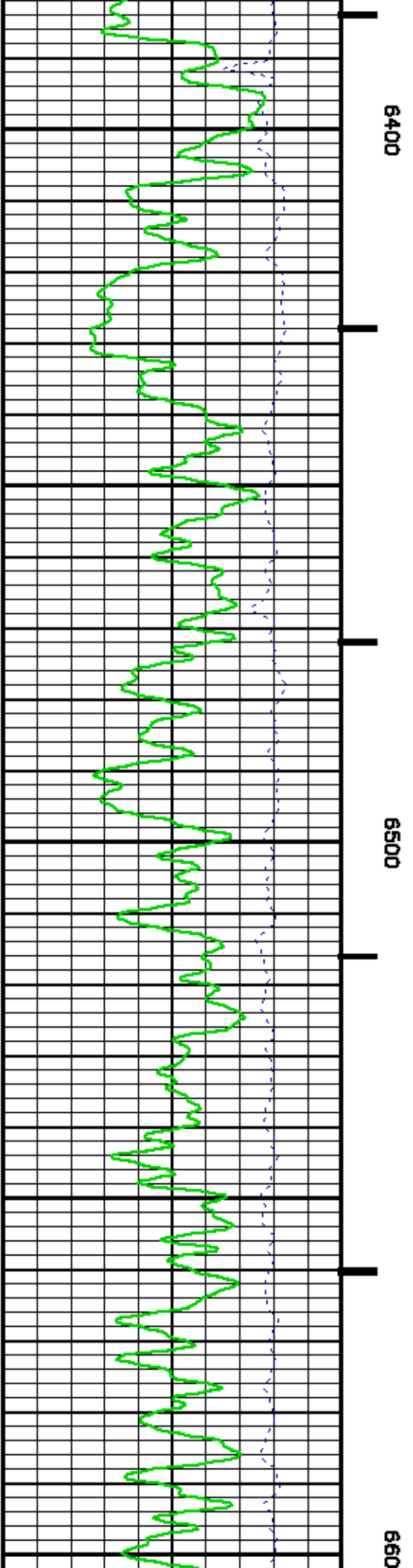
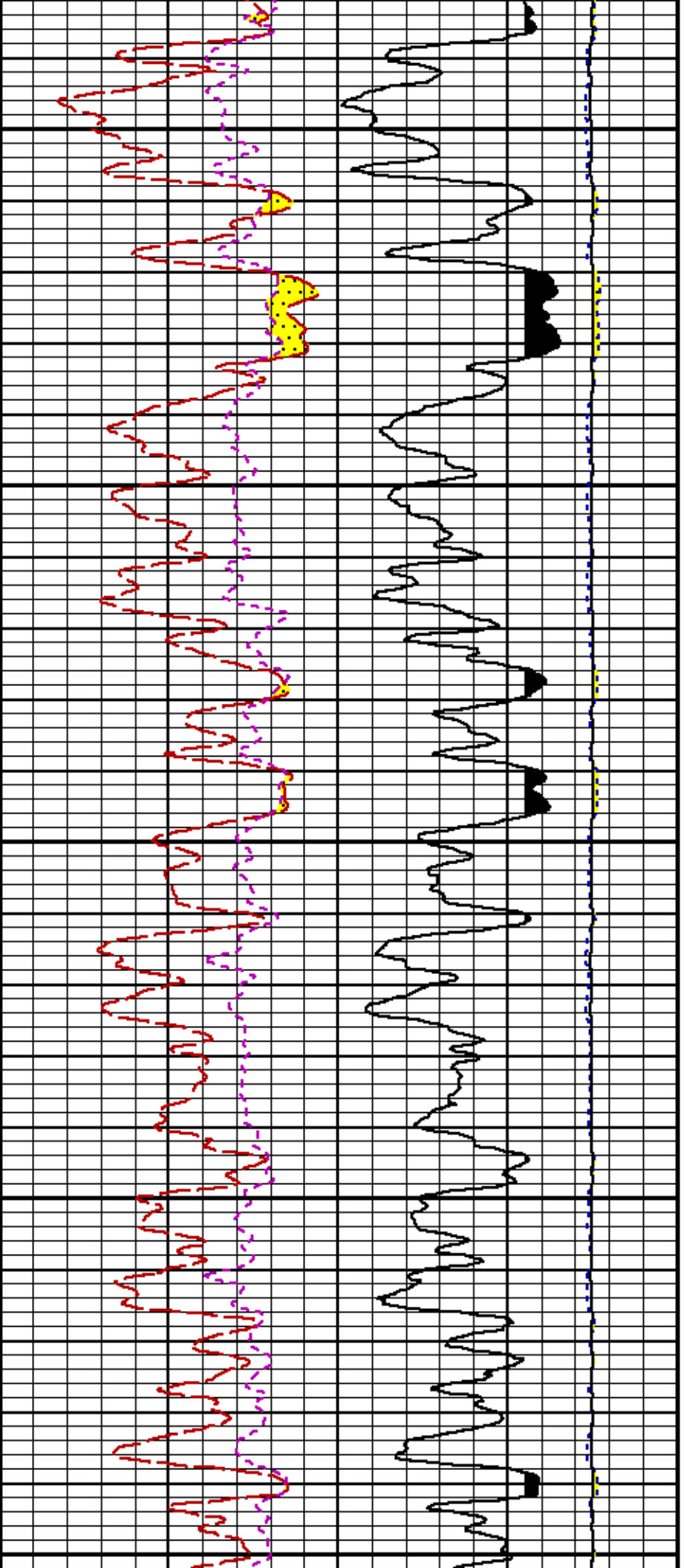


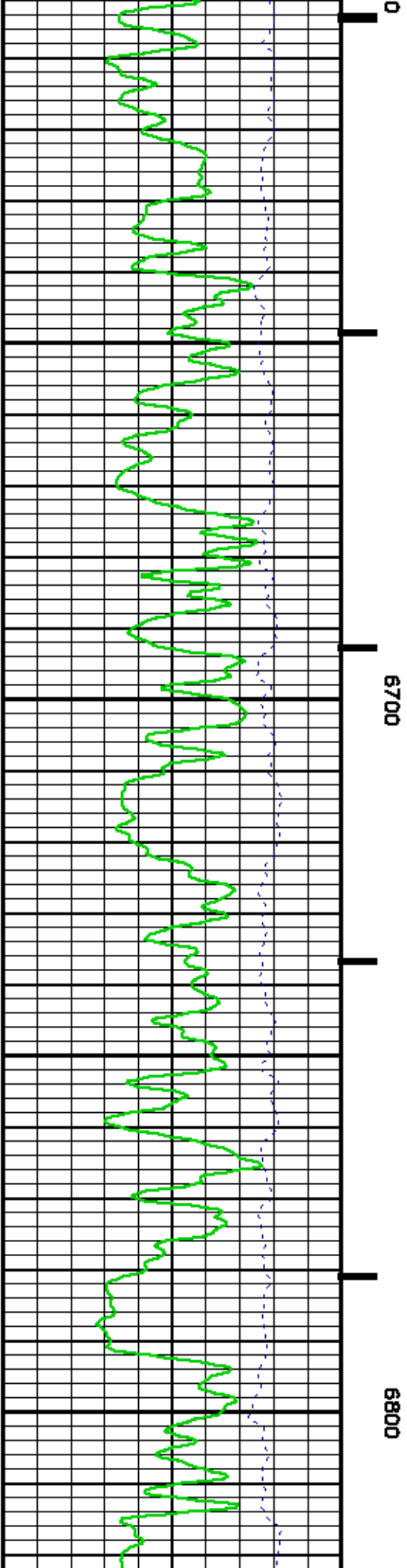
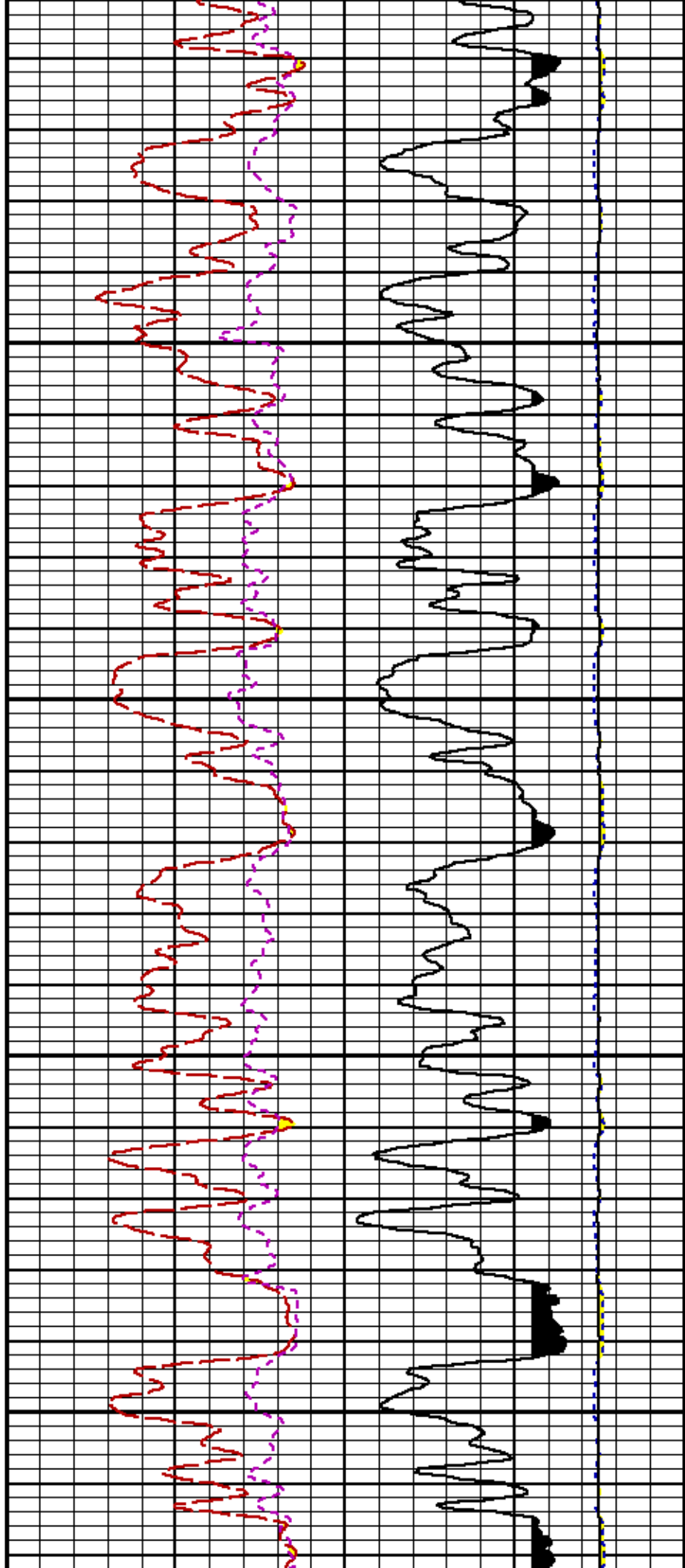


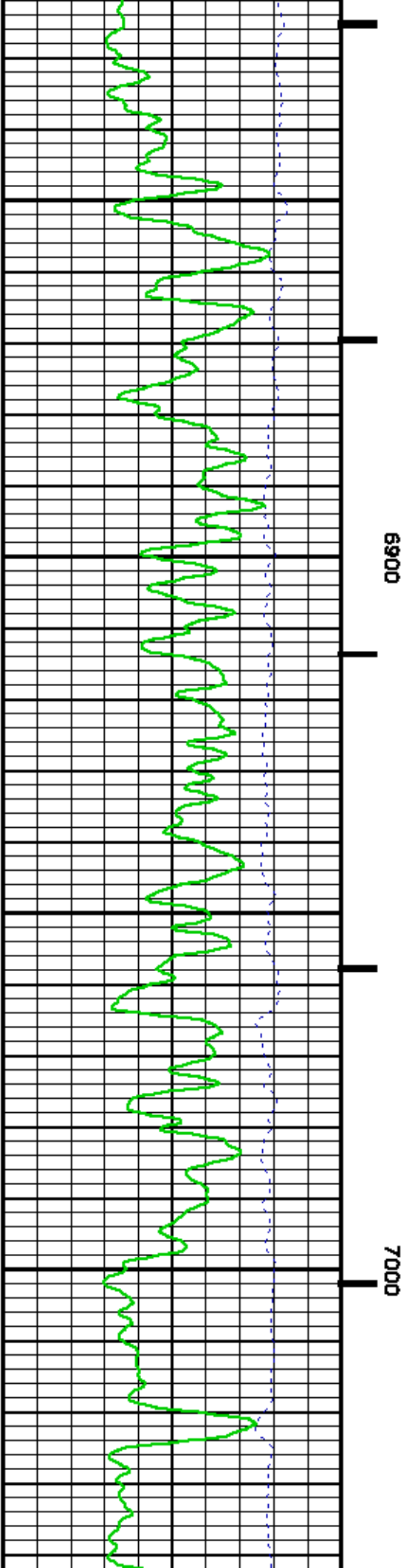
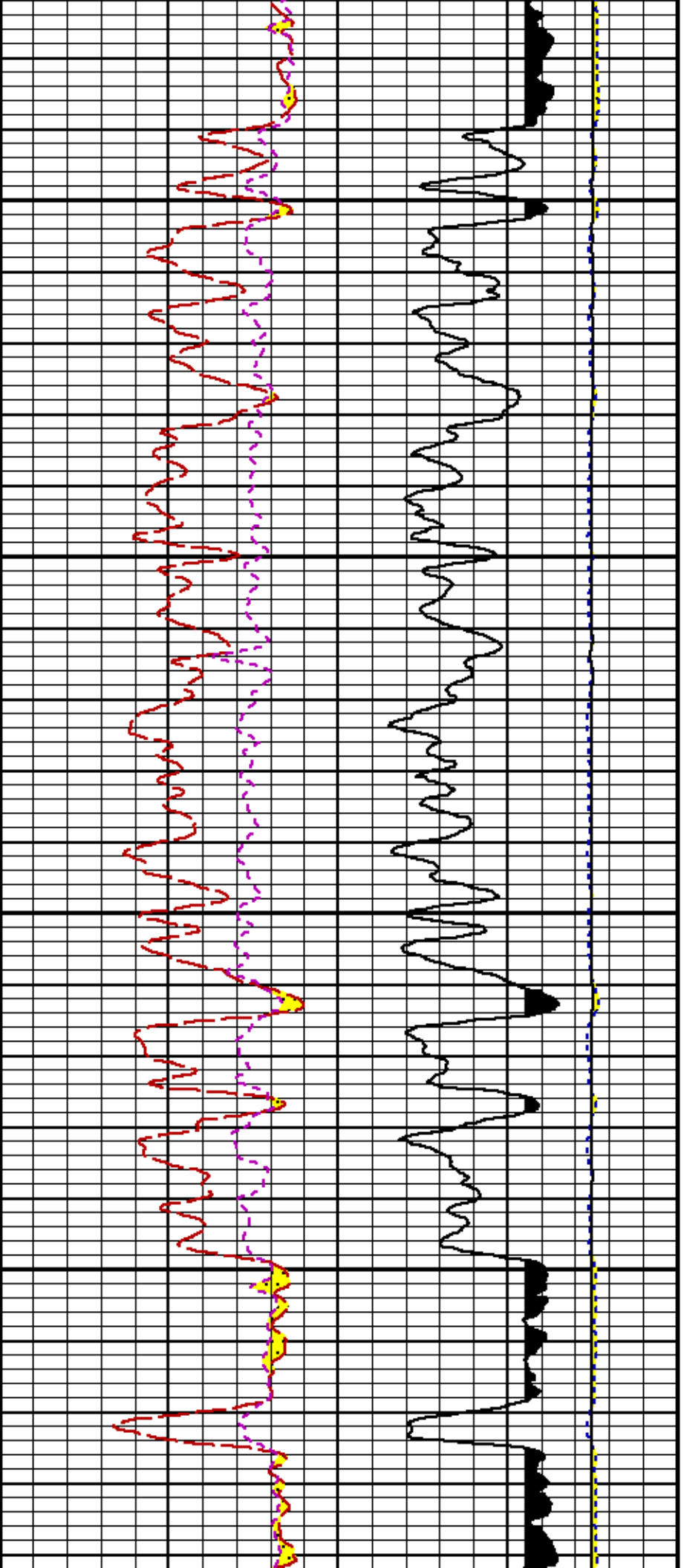


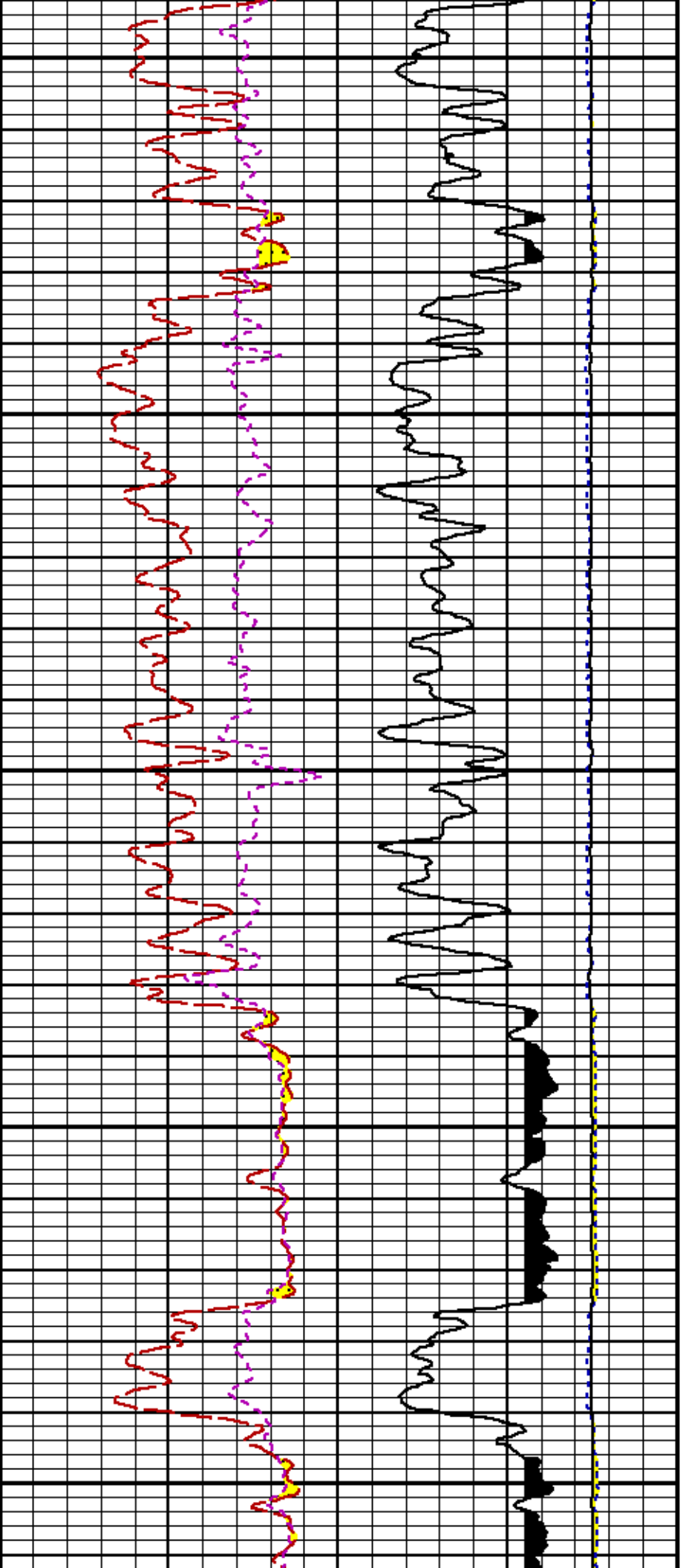






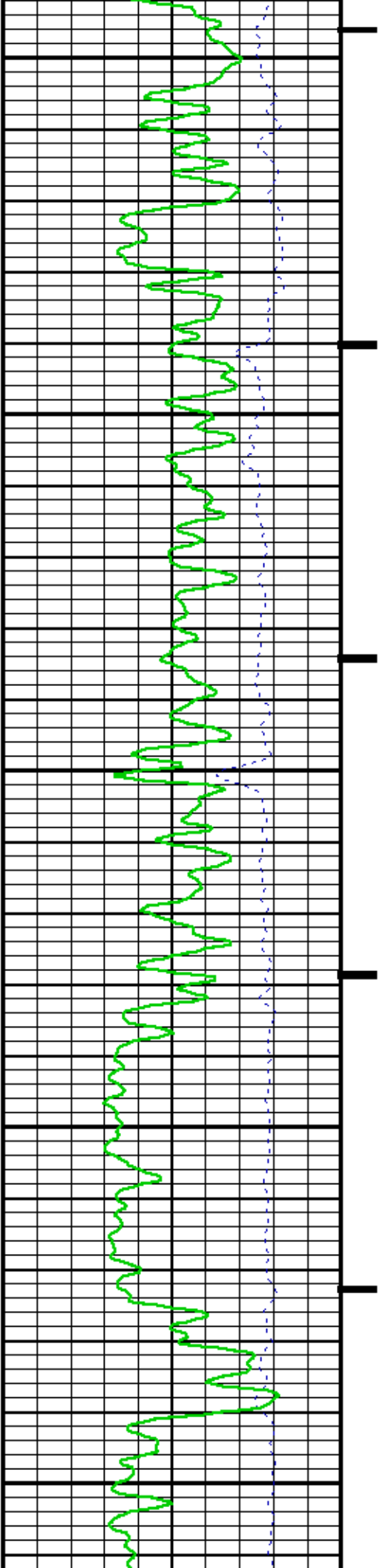


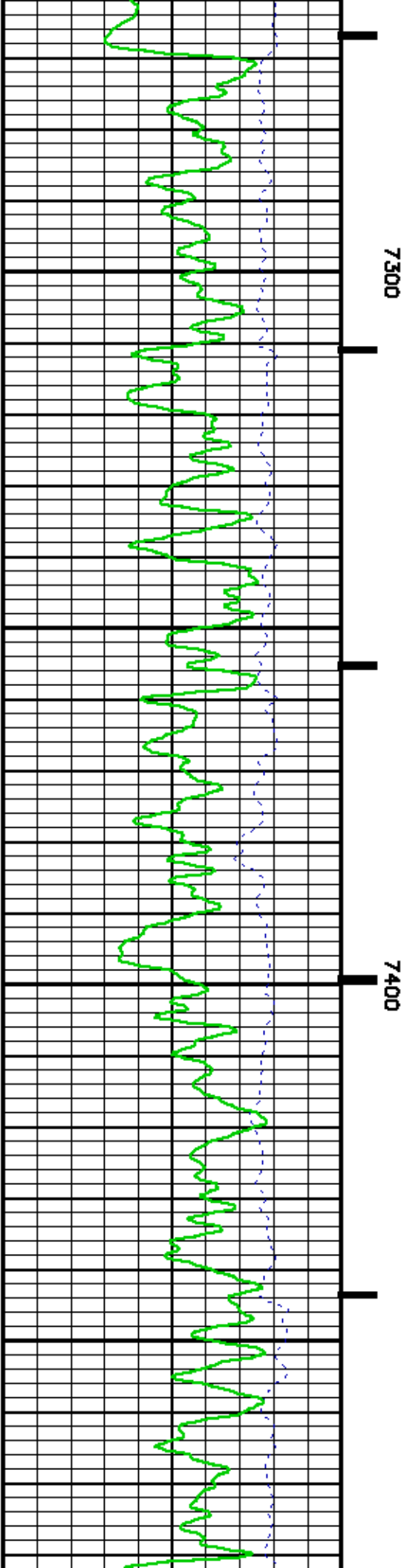
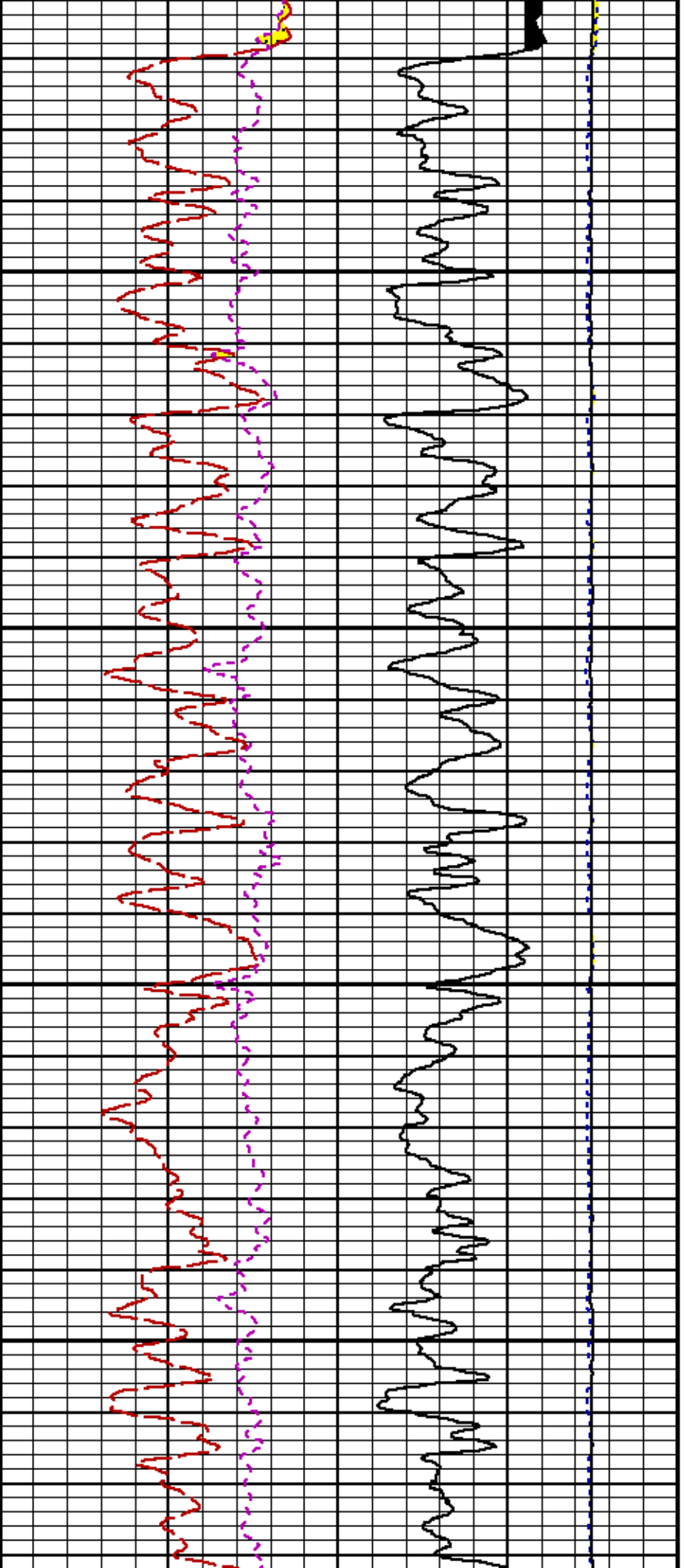


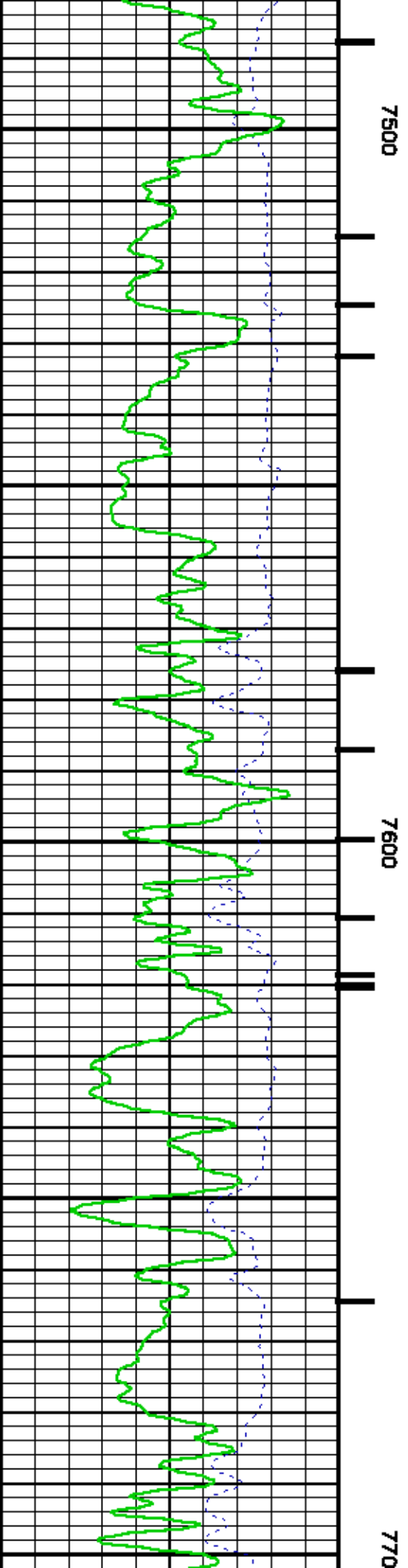
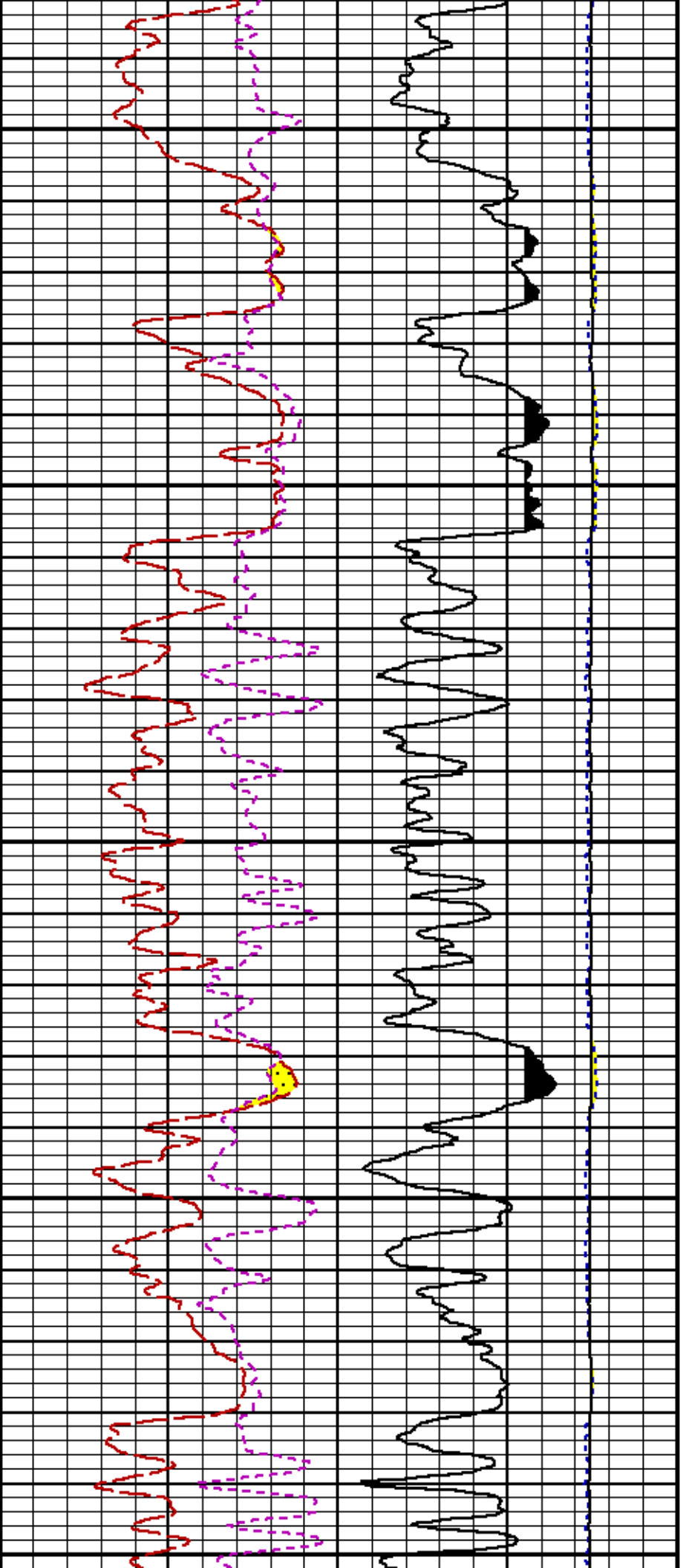


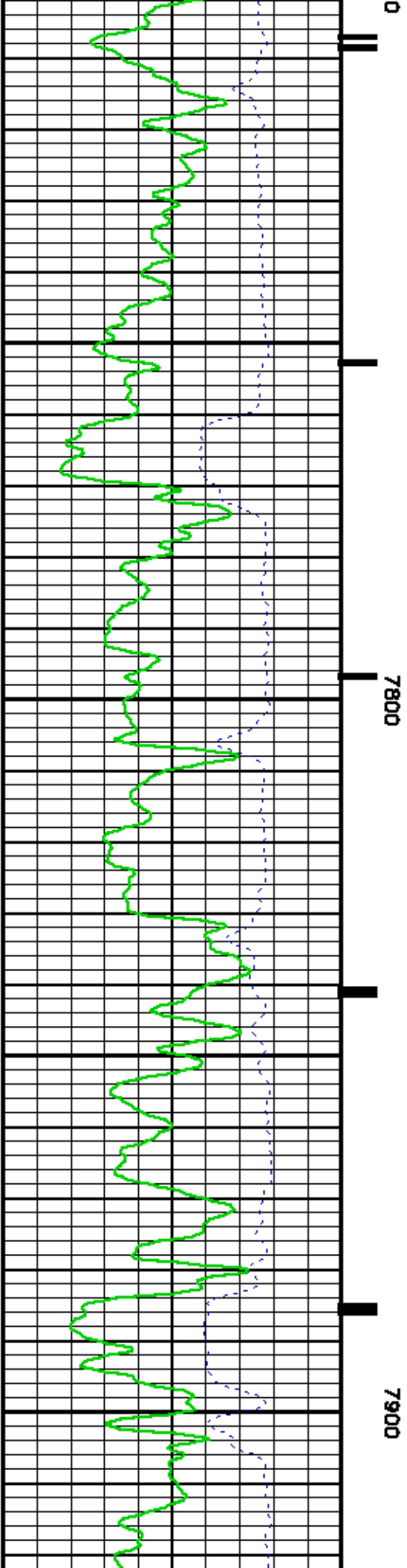
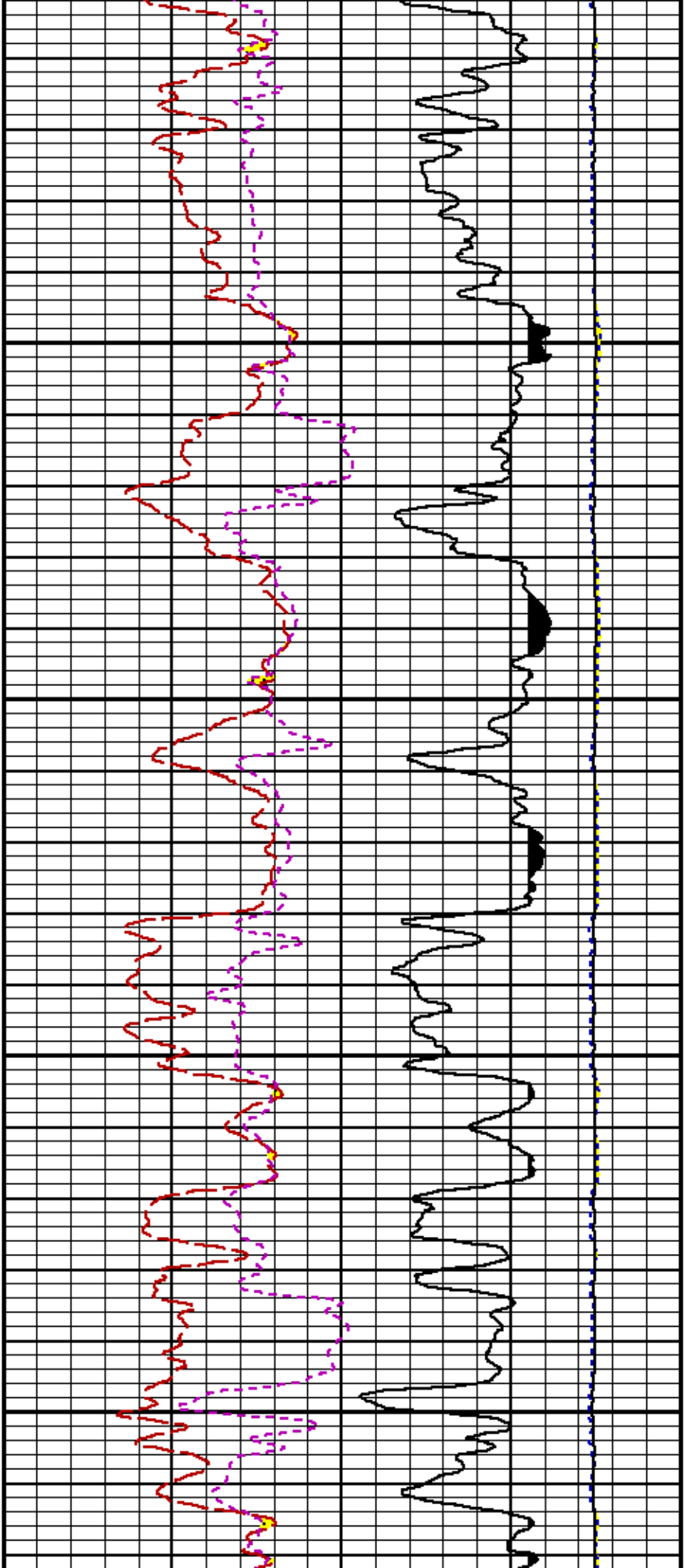
7100

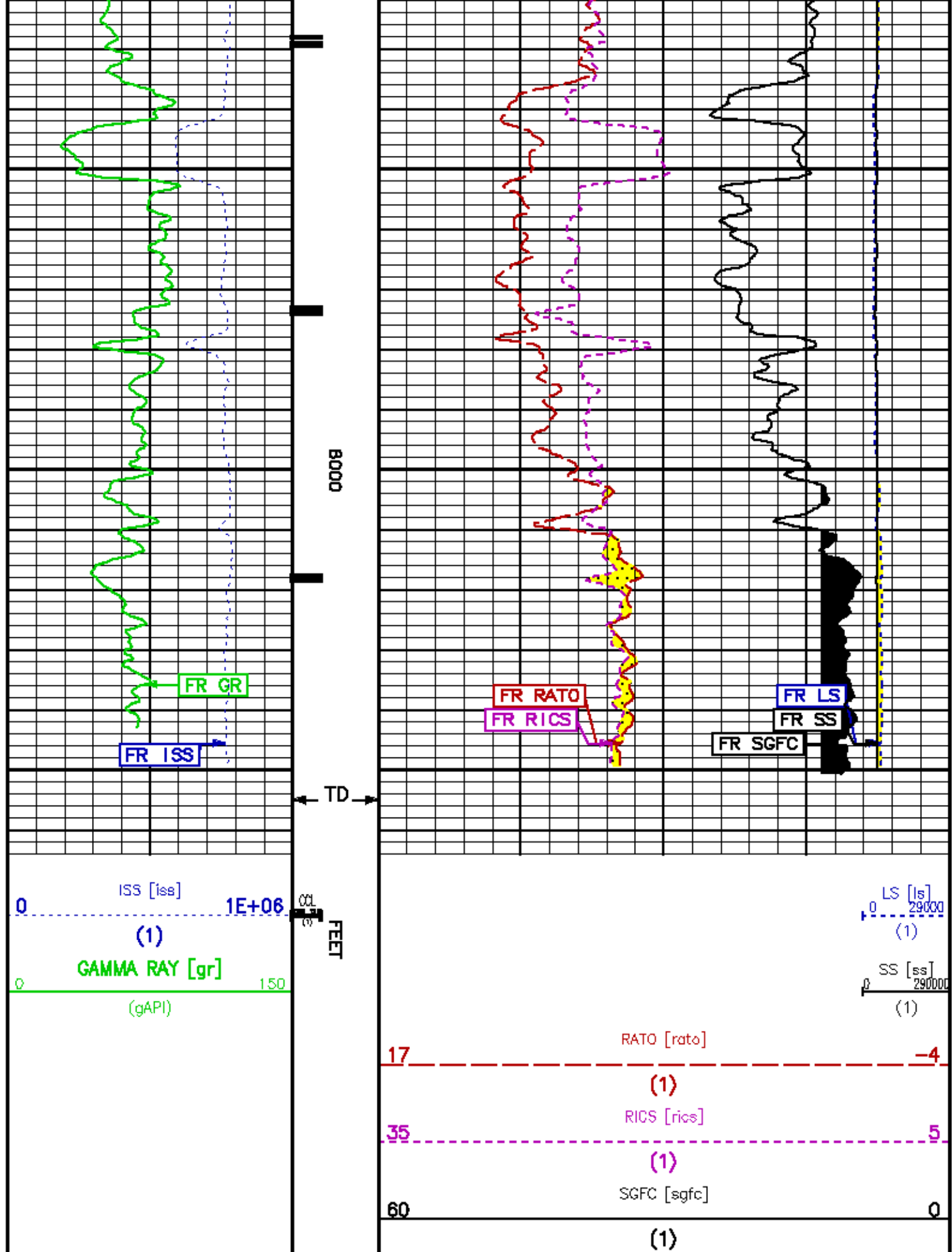
7200











REPEAT LOG

ECLIPS 6.11 Aug 06, 2010
Updates: 1,2 Patches: 3

Fri May 3 18:17:49 2013

Perplt /main/62

Cplot

Pdf_Cpp /main/16

Fileview 5.61

PARAMETER AND FILTER SUMMARY REPORT

FILE: /data/624390/m353h281201.prm
LOGGING MODE: DEPTH DIRECTION: UP
TOP DEPTH: 7088.500 ft BOTTOM DEPTH: 7462.000 ft

SYMMETRIC FILTER

MEASUREMENT TYPE	PARAMETER	VALUE	UNITS	INTERVAL (ft)
GR	FILTER ()	medium (1)		TOP BOTTOM

RPM PROCESSING

MEASUREMENT TYPE	PARAMETER	VALUE	UNITS	INTERVAL (ft)
PNC Parameters	BOREHOLE CONTENTS	FLUID		TOP BOTTOM
	OPEN/CASED HOLE	CASED HOLE		" "
	BOREHOLE SIZE	8.75	1n	" "
	CASING SIZE	4.50	1n	" "
	MATRIX	SANDSTONE		" "
	CORRECTION BUFFER	11		" "

CURVE DESCRIPTION REPORT

CURVE NAME	CREATION DATE	CURVE DESCRIPTION
F1:CCL	May 3 11:50:52 2013	CASING COLLAR LOCATOR
F1:GR	May 3 11:50:52 2013	GAMMA RAY
F1:ISS	May 3 11:50:52 2013	INELASTIC SHORT SPACE COUNT RATE
F1:LS	May 3 11:50:52 2013	LONG SPACE COUNT RATE
F1:RATO	May 3 11:50:52 2013	SHORT/LONG SPACE COUNT RATE RATIO
F1:RICS	May 3 11:50:52 2013	SHORT SPACE INELASTIC TO CAPTURE COUNT RATE RATIO (ISS/CSS)
F1:SGFC	May 3 11:50:52 2013	CORRECTED FORMATION SIGMA
F1:SS	May 3 11:50:52 2013	SHORT SPACE COUNT RATE

CURVE MEASURE POINT OFFSET

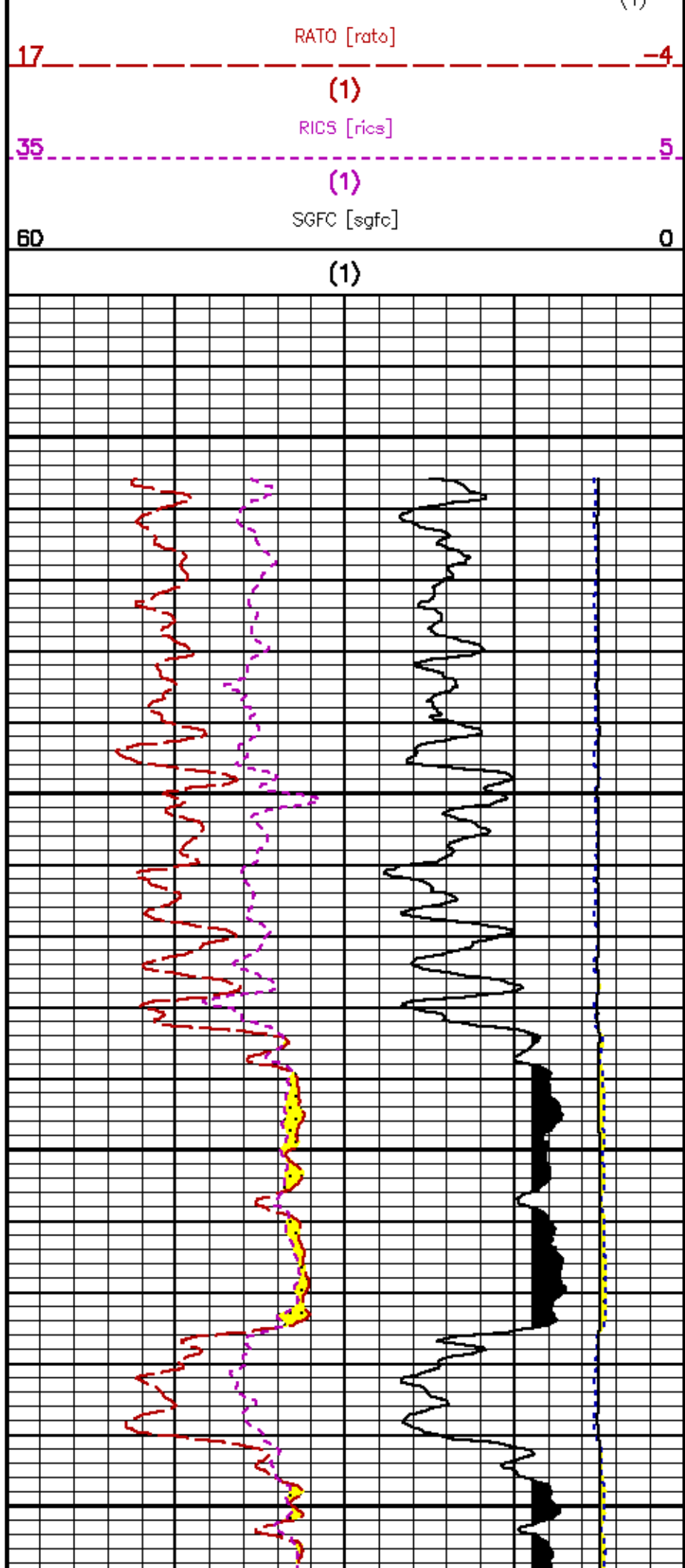
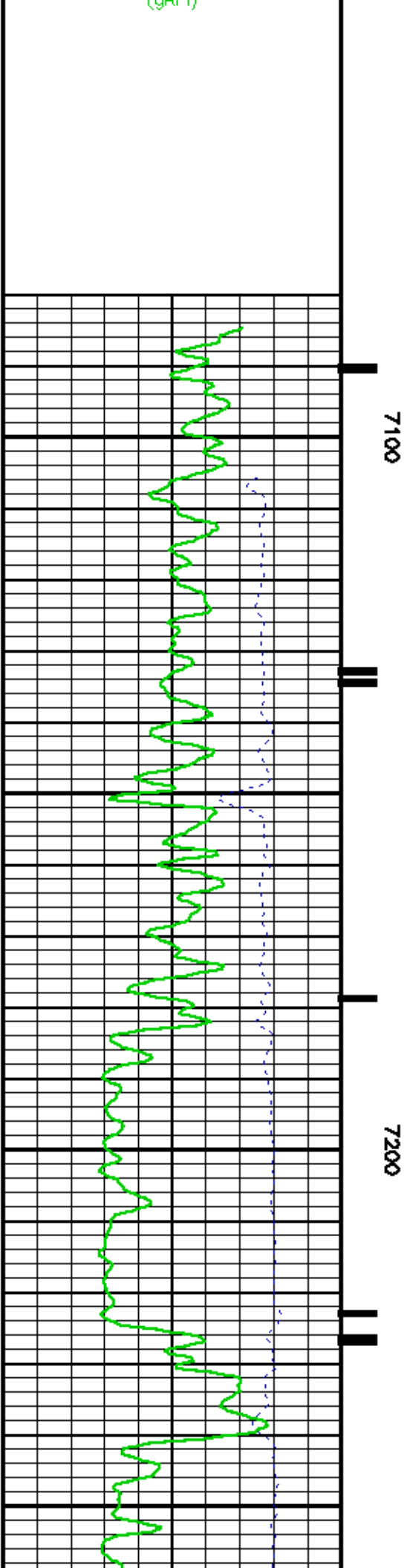
CURVE	OFFSET (ft)	CURVE	OFFSET (ft)	CURVE	OFFSET (ft)	CURVE	OFFSET (ft)
CCL	21.75	ISS	9.50	RATO	9.50	SGFC	9.50
GR	19.25	LS	9.50	RICS	9.50	SS	9.50

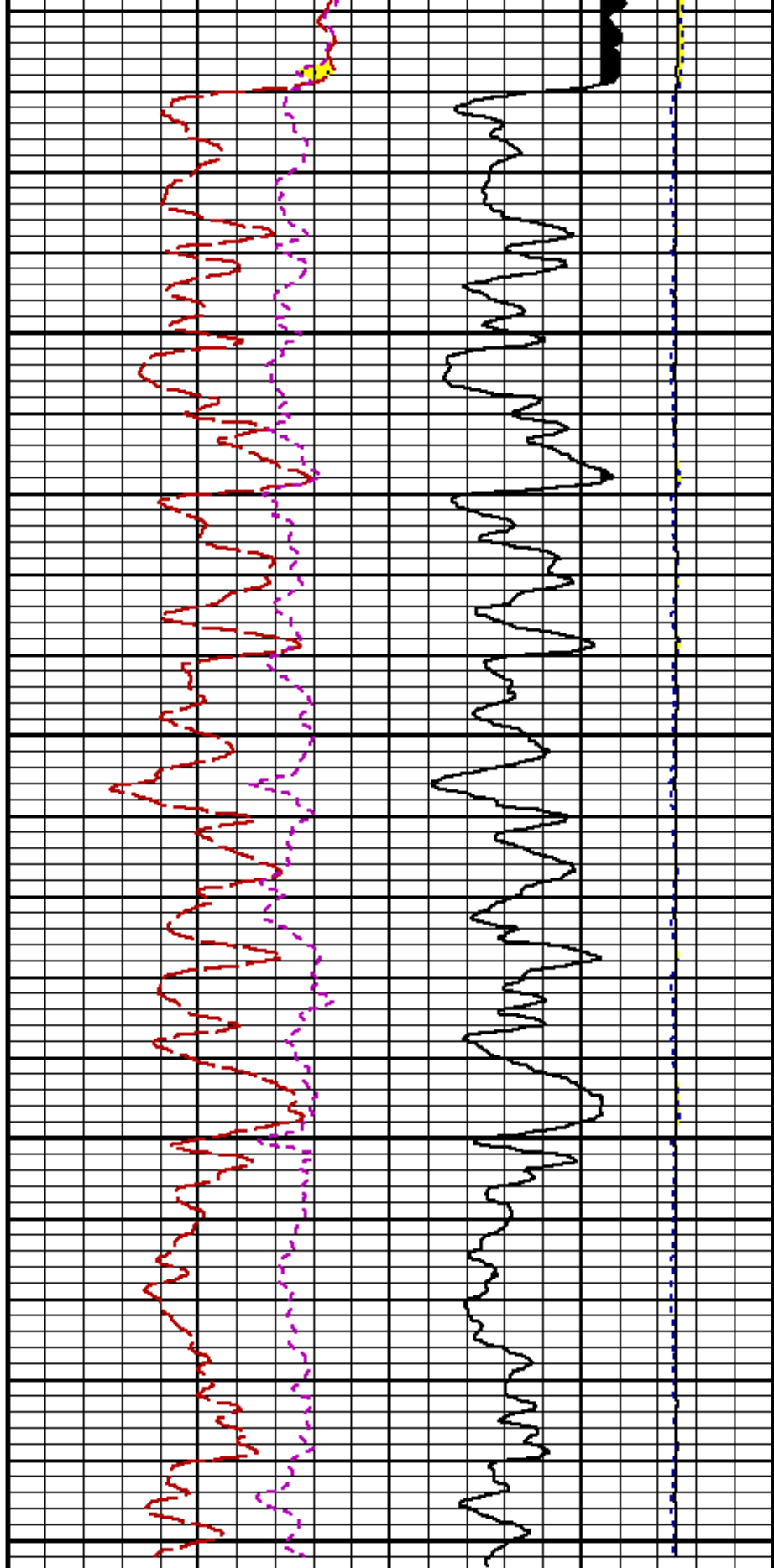
Presentation : HL6670:REPEAT_RPM.pdf [5"/100' Scale]
Plot Interval : 7088.75 - 7465 Feet

Data File 1 : F1 : HL6670:/data/624390/m353h281201.dtl
Created On : May 3 11:50:52 2013
Company : WPK ENERGY INC
Well : GOLDSBOROUGH PA 511-11
Field : PARACHUTE
File Interval : 7088.75 - 7466 Feet
Out : m353h281



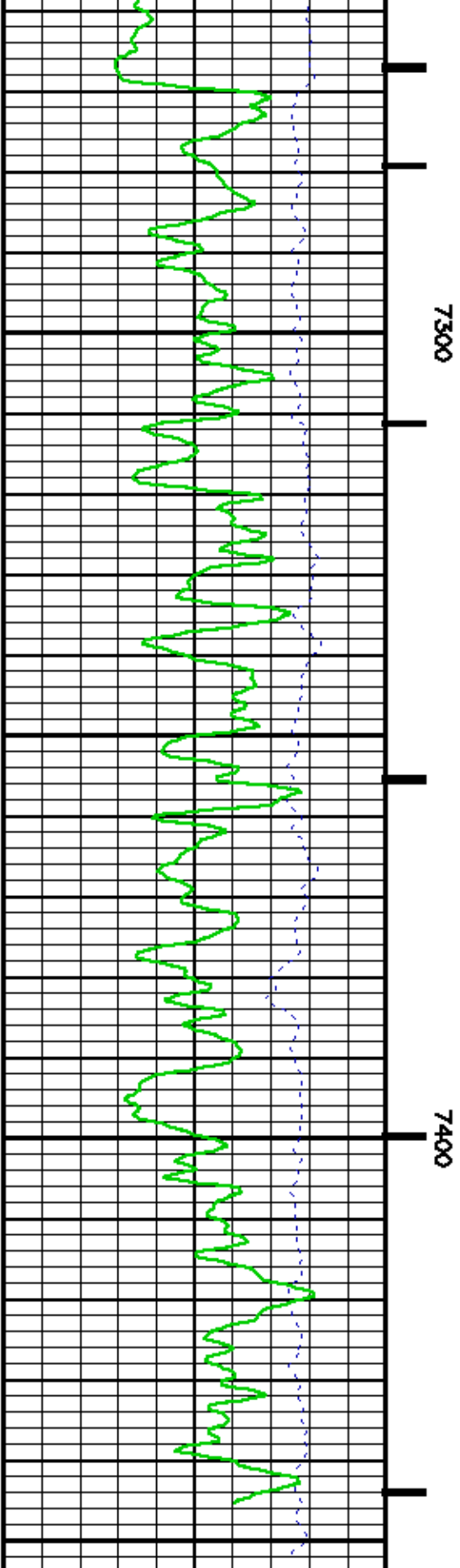
(gAr)





LS [ls]
 0 29000
 (1)

SS [ss]
 0 290000
 (1)



ISS [iss]
 0 1E+06
 (1)

GAMMA RAY [gr]
 0 150
 (1)

FEEET

11

17

-4

(1)

RICS [ˈrɪs]

35

5

(1)

SGFC [sgfc]

60

0

(1)

Source File: [dall1a/624390/m353h251E.tif](#)

TOOL # : 2812LA 103743B2

DATE/TIME PERFORMED: Thu May 2 18:05:51 2013

UNIT #: 3880TA HL6670

CALB JIG #: 4702NK VBA905

	BACKGROUND (cts/s)	CALBRTR ON (cts/s)	CR DIFF (cts/s)	MULT	BACKGROUND (gAPI)	CALBRTR ON (gAPI)	CALBRTR (gAPI)
GR	44.40	271.13	226.7	0.928	41.12	251.12	210

TOOL #: 2812LA 103743B2

DATE/TIME PERFORMED: Thu May 2 16:08:38 2013

UNIT #: 3880TA HL6670

VERI JIG #: 4702NK VBA905

	BACKGROUND (cts/g)	CALBRTR ON (cts/g)	MULT	BACKGROUND (gAPI)	CALBRTR ON (gAPI)	DIFF. (gAPI)
GR	45.24	273.71	0.926	41.91	253.51	211.61

TOOL: 8283PA 10160383

DATE/TIME PERFORMED: Thu May 2 15:41:14 2013

UNIT: 3880TA HL6670

CALIBRATOR: 2437XB GJSHOP

SOURCE: 8281AA 10160601

HOURS: 8281AA 588

	ISS	Mtr Vlt (V)	SS Gain	LS Gain	XLS Gain	EA Temp Sync (degF)	Delay (usec)	RCAL
Raw Data	796061	126	2263	2257	2214	113	7	0.9913
Interpolated	1300000	152	2243	2249	2212			

	ISS	BKS	BKL	BKX	SGA1	SDA1	SGA2	SDA2
Raw Data	796061	8112	1428	214	26.10	0.15	24.25	0.32

	ISS	ILS	IXS	SS	SS2	LS	CSS	CLS
Raw Data	796061	174413	28604	90680	32323	6523	64972	13680
Fit Quality %		1.140	1.039	1.067	1.080	1.148	0.994	1.099

	ISS	RBOR	RIN	RIN13	RICS	RATO	RTWO	RONE							
			ISS/ILS	ISS/IXS	ISS/CSS	SS/LS	SS2/L5	CSS/CLS							
Raw Data	796061	1.43	4.56	29.71	14.48	10.67	3.79	4.03							
		1.42	1.45	3.35	5.56	26.60	32.70	10.38	16.34	10.06	11.10	3.57	3.95	3.76	4.58
Fit Quality %		0.059	0.216	0.286	0.188	0.070	0.053	0.013							
Reduced	1402264	1.43	4.55	29.63	14.46	10.67	3.80	4.03							
		1.42	1.45	4.33	5.56	27.60	32.70	13.70	16.34	10.06	11.10	3.57	3.95	3.76	4.58

INSTRUMENT CONFIGURATION

Source File: /dall1a/624380/m354h~SONDEX-ldg

AS CHUTEHEAD

PCM POWER SUPPLY

Diameter : 1.70"
Length : 3.88'
Weight : 18 lbs
Series : 6230EA
Mnemonic : PCM

TELEMETRY / CCL

Diameter : 1.70"
Length : 4.48'
Weight : 20 lbs
Series : 6248ED
Mnemonic : PCM

SONDEX GAMMA RAY

Diameter : 1.68"
Length : 2.17'

RPM ELECTRONICS

Diameter : 1.70"
Length : 4.48'
Weight : 16 lbs
Series : 6281EA
Mnemonic : RPM

RPM C DETECTOR SECTION

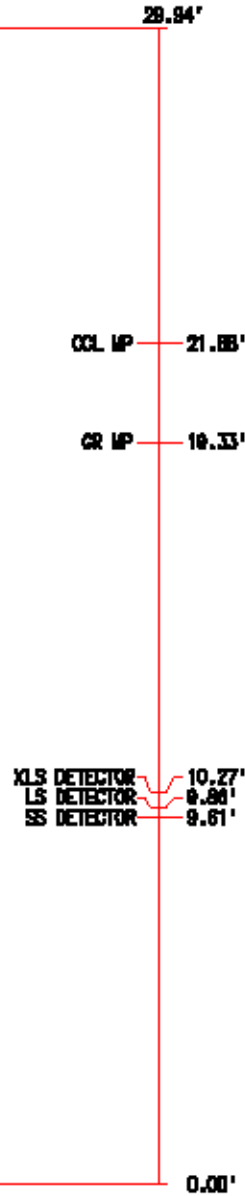
Diameter : 1.70"
Length : 9.40'
Weight : 41 lbs
Series : 6283PA
Mnemonic : RPM

RPM SOURCE SECTION

Diameter : 1.70"
Length : 4.70'
Weight : 18 lbs
Series : 6281FA
Mnemonic : RPM

BULL PLUG 1 11/16

TOTAL LENGTH: 29.94'
TOTAL WEIGHT: 128 lbs
MAX DIAMETER: 0"1.70"





COMPANY	WPX ENERGY INC	FILE NO:	CH071855
WELL	GOLDSBOROUGH PA 511-11	API NO:	05045218170000
FIELD	PARACHUTE		
COUNTY	GARFIELD	STATE	CO
LOCATION:		ELEVATIONS:	PAD: PA 22-11
SHL: 2402' FNL 2037' FNL		KB 6300 FT	S11 T7S R95W
BHL: 1103' FNL 639' FNL		DF 6300 FT	RIG: CYCLONE 17
GL 6274 FT			
SEC	11	TWP	7S
RGE	95W	DATE	5-MAY-2013