

# ConocoPhillips Company

## CONSTRUCTION LAYOUT FOR

TEBO #29-2H

SECTION 28, T4S, R64W, 6th P.M.

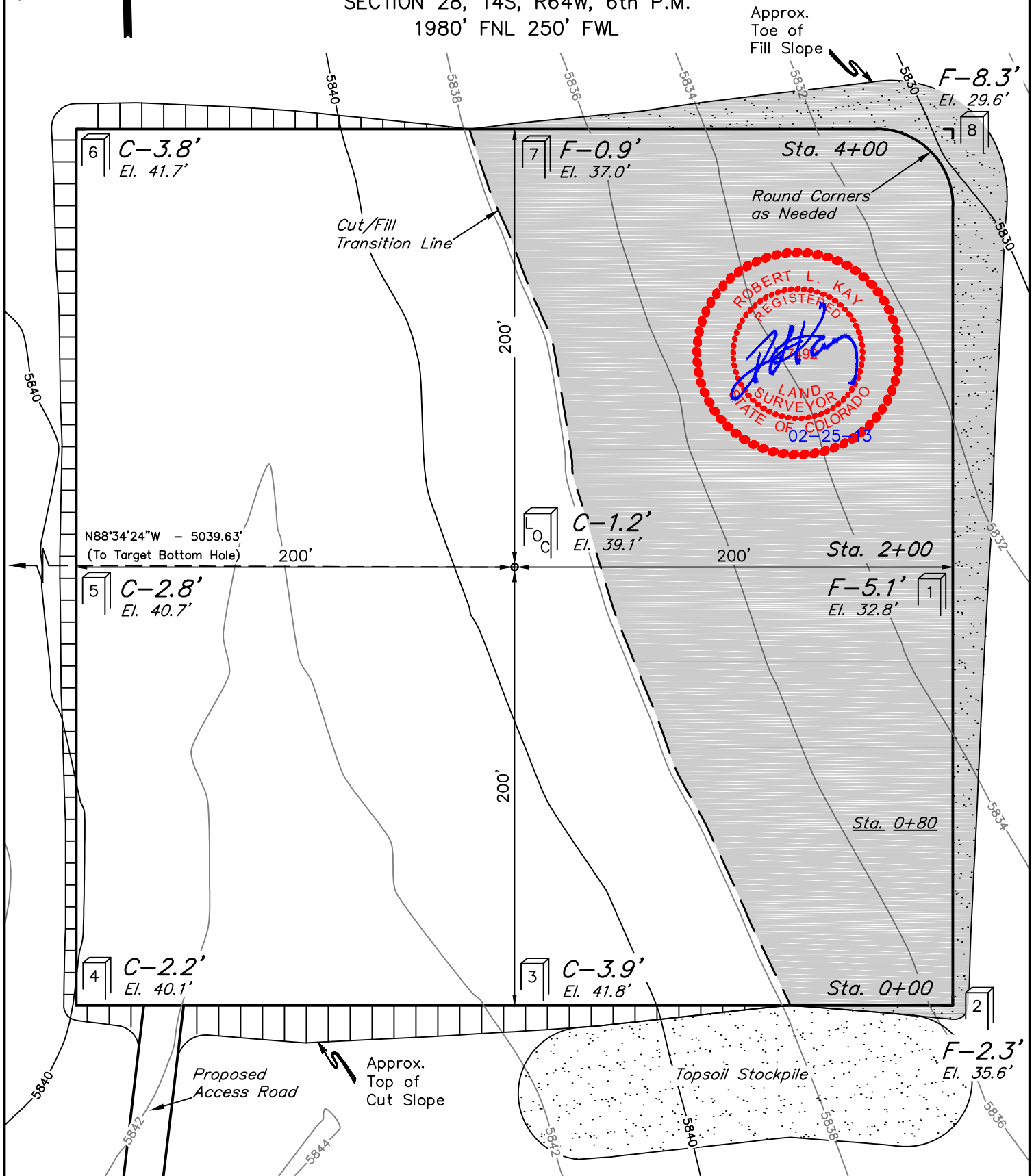
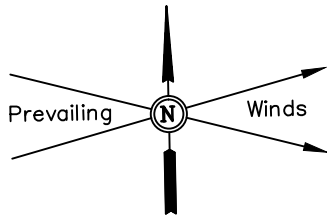
1980' FNL 250' FWL

FIGURE #1

SCALE: 1" = 60'

DATE: 02-19-13

DRAWN BY: A.D.



Elev. Ungraded Ground At Loc. Stake = 5839.1'  
FINISHED GRADE ELEV. AT LOC. STAKE = 5837.9'

UINTAH ENGINEERING & LAND SURVEYING

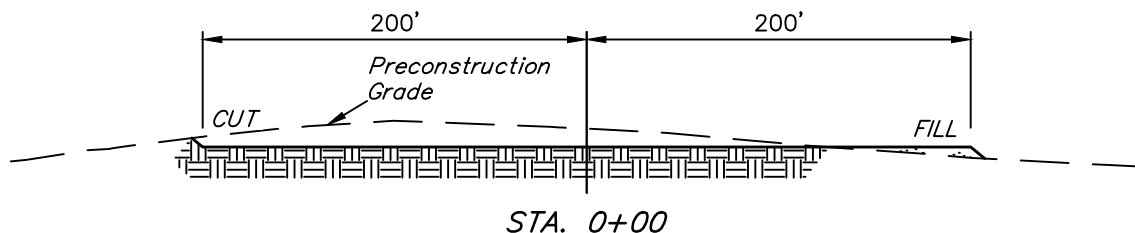
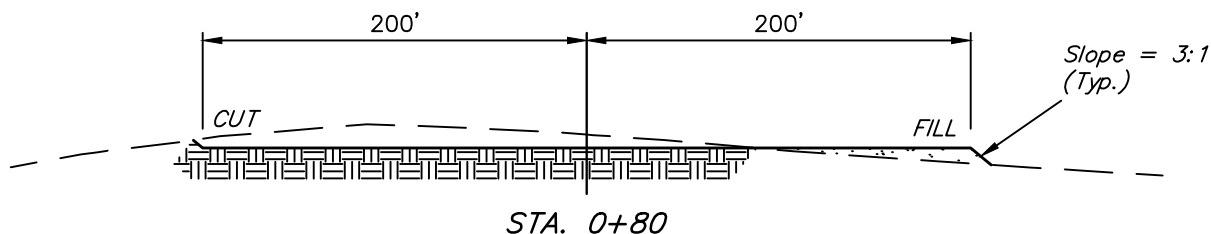
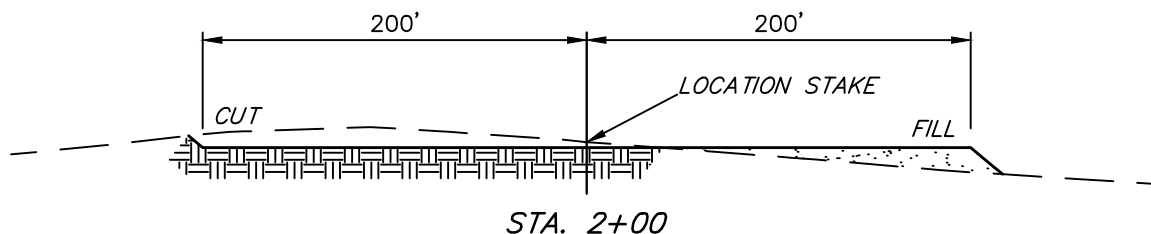
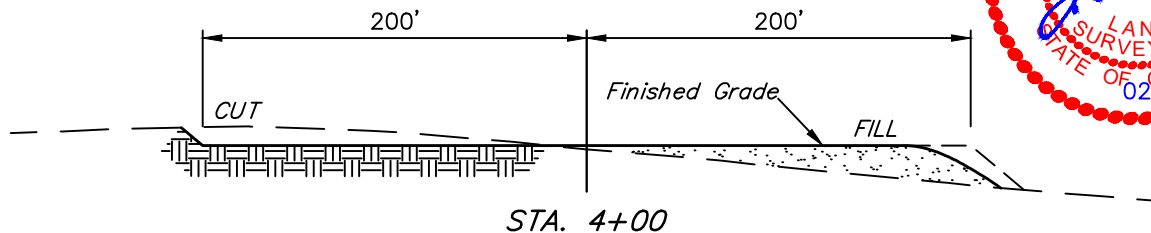
85 So. 200 East \* Vernal, Utah 84078 \* (435) 789-1017

1" = 40'  
X-Section  
Scale  
1" = 100'

DATE: 02-19-13  
DRAWN BY: A.D.

**ConocoPhillips Company**  
**CONSTRUCTION LAYOUT CROSS SECTIONS FOR**  
**TEBO #29-2H**  
**SECTION 28, T4S, R64W, 6th P.M.**  
**1980' FNL 250' FWL**

**FIGURE #2**



**NOTE:**

Topsoil should not be Stripped Below Finished Grade on Substructure Area.

**APPROXIMATE ACREAGES**

WELL SITE DISTURBANCE = ± 4.342 ACRES  
ACCESS ROAD DISTURBANCE = ± 1.747 ACRES  
TOTAL = ± 6.089 ACRES

**\* NOTE:**

FILL QUANTITY INCLUDES 5% FOR COMPACTION

**APPROXIMATE YARDAGES**

(6") Topsoil Stripping = 3,290 Cu. Yds.  
Remaining Location = 9,060 Cu. Yds.  
TOTAL CUT = 12,350 CU. YDS.  
FILL = 9,060 CU. YDS.

EXCESS MATERIAL = 3,290 Cu. Yds.  
Topsoil = 3,290 Cu. Yds.  
EXCESS UNBALANCE = 0 Cu. Yds.  
(After Interim Rehabilitation)

**UINTAH ENGINEERING & LAND SURVEYING**  
85 So. 200 East \* Vernal, Utah 84078 \* (435) 789-1017