

# Encana OIL & GAS (USA) INC.

CONSTRUCTION LAYOUT FOR  
WELL PAD SG E34 496  
SECTION 34, T4S, R96W, 6th P.M.  
SW 1/4 NW 1/4



Sheet 3 of 12



DATE: 07-28-10  
DRAWN BY: C.H.  
Revised: 11-16-10 C.H.  
Revised: 11-23-10 C.H.  
Revised: 09-27-11 D.R.B.  
Revised: 05-22-12 D.R.B.  
Revised: 06-08-12 D.R.B.  
Revised: 07-10-12 T.B.  
Revised: 11-16-12 T.B.  
Revised: 12-18-12 T.B.  
Revised: 01-18-13 T.B.  
Revised: 04-11-13 T.B.  
Revised: 04-19-13 T.B.

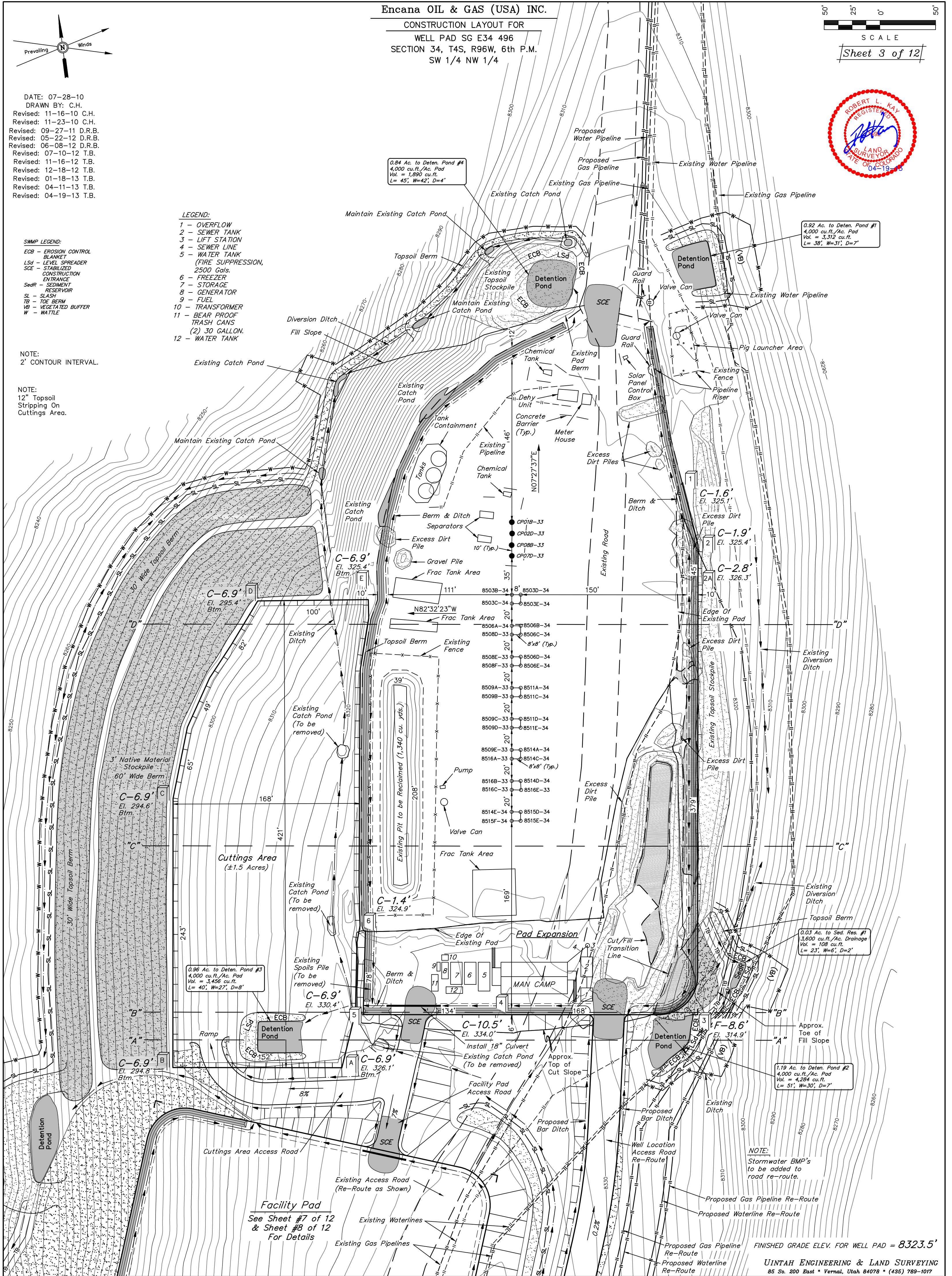
**SWMP LEGEND:**  
ECB - EROSION CONTROL BLANKET  
Lsd - LEVEL SPREADER  
SCE - STABILIZED CONSTRUCTION ENTRANCE  
SedR - SEDIMENT RESERVOIR  
SL - SLASH  
TB - TOE BERM  
VB - VEGETATED BUFFER  
W - WATTLE

## LEGEND:

- OVERFLOW
- SEWER TANK
- LIFT STATION
- SEWER LINE
- WATER TANK
- FREEZER
- STORAGE
- GENERATOR
- FUEL
- TRANSFORMER
- BEAR PROOF TRASH CANS (2) 30 GALLON.
- WATER TANK

NOTE:  
2' CONTOUR INTERVAL.

NOTE:  
12" Topsoil Stripping On Cuttings Area.





Encana OIL & GAS (USA) INC.  
CONSTRUCTION LAYOUT CROSS SECTION FOR  
WELL PAD SG E34 496  
SECTION 34, T4S, R96W, 6th P.M.  
SW 1/4 NW 1/4

Sheet 4 of 12

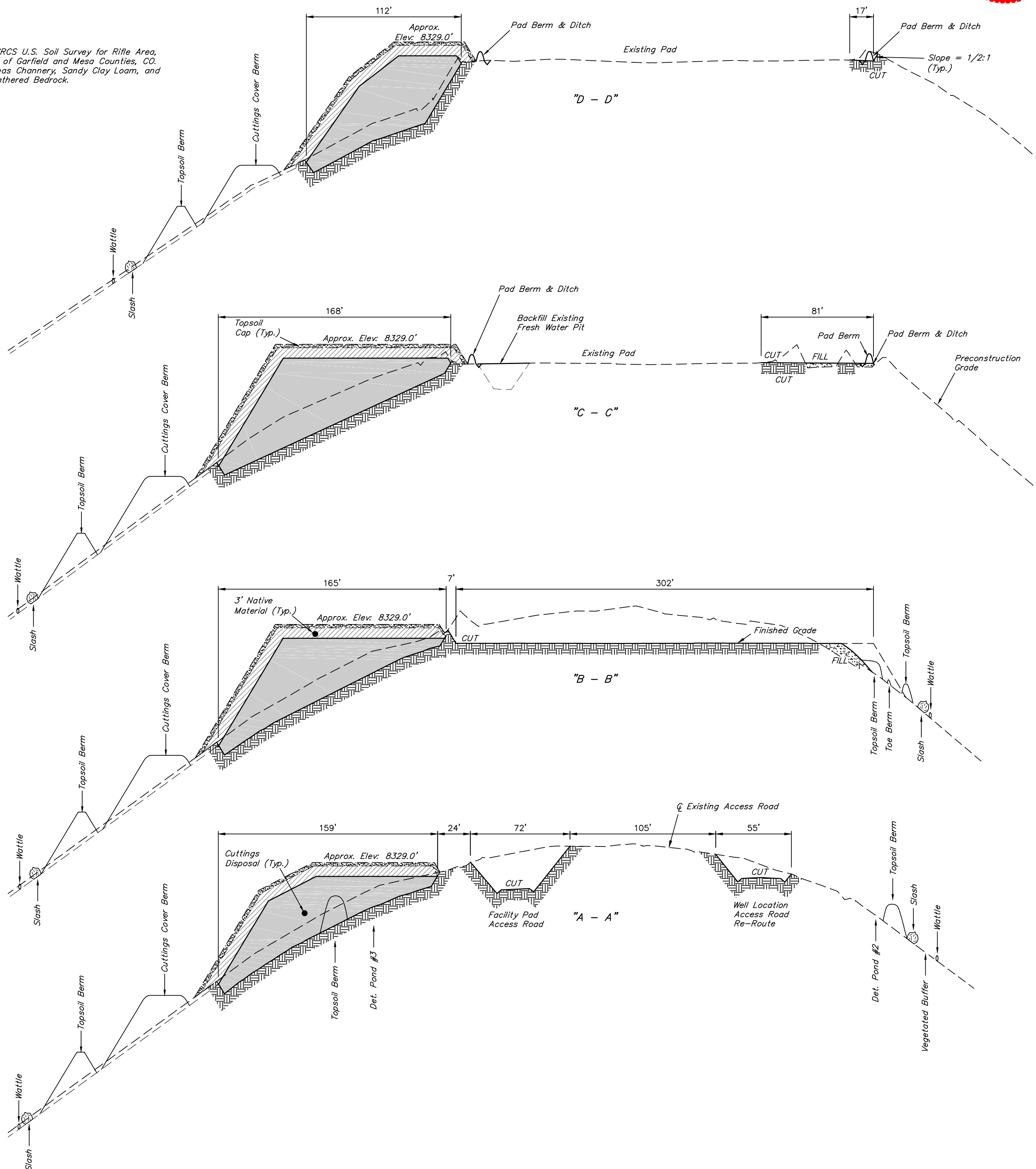


1" = 20'  
X-Section  
Scale  
1" = 50'

DATE: 07-28-10  
DRAWN BY: C.H.  
Revised: 11-23-10 C.H.  
Revised: 06-08-12 D.R.B.  
Revised: 07-10-12 T.B.  
Revised: 12-18-12 T.B.  
Revised: 04-11-13 T.B.  
Revised: 04-19-13 T.B.

NOTE:

Per NRCS U.S. Soil Survey for Rifle Area,  
Parts of Garfield and Mesa Counties, CO.  
Site has Channery, Sandy Clay Loam, and  
Unweathered Bedrock.



NOTE:

Topsail should not be  
Stripped Below Finished  
Grade on Substructure Area.

WELL PAD APPROX. YARDAGES

(12") Topsail Stripping	=	1,740	Cu. Yds.
Remaining Location	=	4,570	Cu. Yds.
TOTAL CUT	=	6,310	CU.YDS.
FILL	=	1,100	CU.YDS.

EXCESS MATERIAL	=	5,210	Cu. Yds.
Topsail	=	1,740	Cu. Yds.
Fresh Water Pit Backfill	=	1,340	Cu. Yds.
EXCESS UNBALANCE (After Interim Rehabilitation)	=	2,130	Cu. Yds.

CUTTINGS AREA APPROX. YARDAGES

(12") Topsail Stripping	=	5,170	Cu. Yds.
3' Native Material (Cap)	=	9,000	Cu. Yds.
TOTAL CUT	=	14,170	CU.YDS.
FILL	=	0	CU.YDS.

EXCESS MATERIAL	=	14,170	Cu. Yds.
Topsail	=	5,170	Cu. Yds.
3' Native Material (Cap)	=	9,000	Cu. Yds.
EXCESS UNBALANCE (After Interim Rehabilitation)	=	0	Cu. Yds.

\* NOTE:  
FILL QUANTITY INCLUDES  
5% FOR COMPACTION  
\*\* USE EXCESS MATERIAL TO  
CONSTRUCT FACILITY PAD  
(SEE FIGURE 3B & 4B FOR DETAILS)



Encana OIL & GAS (USA) INC.

PRODUCTION SCHEMATIC FOR

WELL PAD SG E34 496

SECTION 34, T4S, R96W, 6th P.M.

SW 1/4 NW 1/4

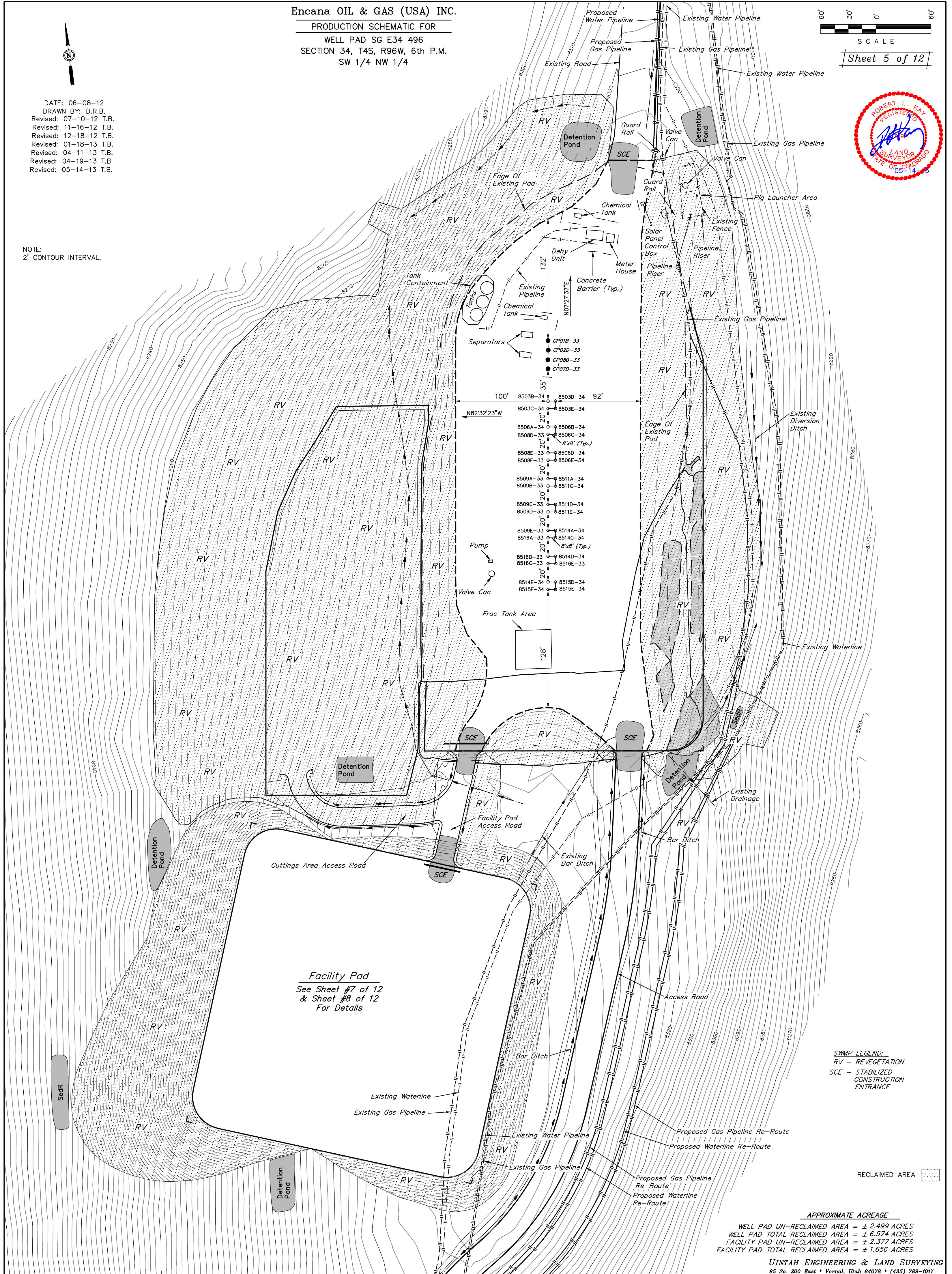


DATE: 06-08-12  
DRAWN BY: D.R.B.  
Revised: 07-10-12 T.B.  
Revised: 11-16-12 T.B.  
Revised: 12-18-12 T.B.  
Revised: 01-18-13 T.B.  
Revised: 04-11-13 T.B.  
Revised: 04-19-13 T.B.  
Revised: 05-14-13 T.B.

NOTE:  
2' CONTOUR INTERVAL.



Sheet 5 of 12



Facility Pad  
See Sheet #7 of 12  
& Sheet #8 of 12  
For Details

**SWMP LEGEND:**  
RV - REVEGETATION  
SCE - STABILIZED CONSTRUCTION ENTRANCE

RECLAIMED AREA

**APPROXIMATE ACREAGE**  
WELL PAD UN-RECLAIMED AREA = ± 2.499 ACRES  
WELL PAD TOTAL RECLAIMED AREA = ± 6.574 ACRES  
FACILITY PAD UN-RECLAIMED AREA = ± 2.377 ACRES  
FACILITY PAD TOTAL RECLAIMED AREA = ± 1.656 ACRES

UINTAH ENGINEERING & LAND SURVEYING  
85 So. 200 East \* Vernal, Utah 84078 \* (435) 789-1017



# Encana OIL & GAS (USA) INC.

## SURFACE DISTURBANCE AREA FOR

WELL PAD SG E34 496

SECTION 34, T4S, R96W, 6th P.M.

SW 1/4 NW 1/4

DATE: 06-08-12

DRAWN BY: D.R.B.

Revised: 07-10-12 T.B.

Revised: 11-16-12 T.B.

Revised: 12-18-12 T.B.

Revised: 01-15-13 T.B.

Revised: 01-18-13 T.B.

Revised: 01-21-13 T.B.

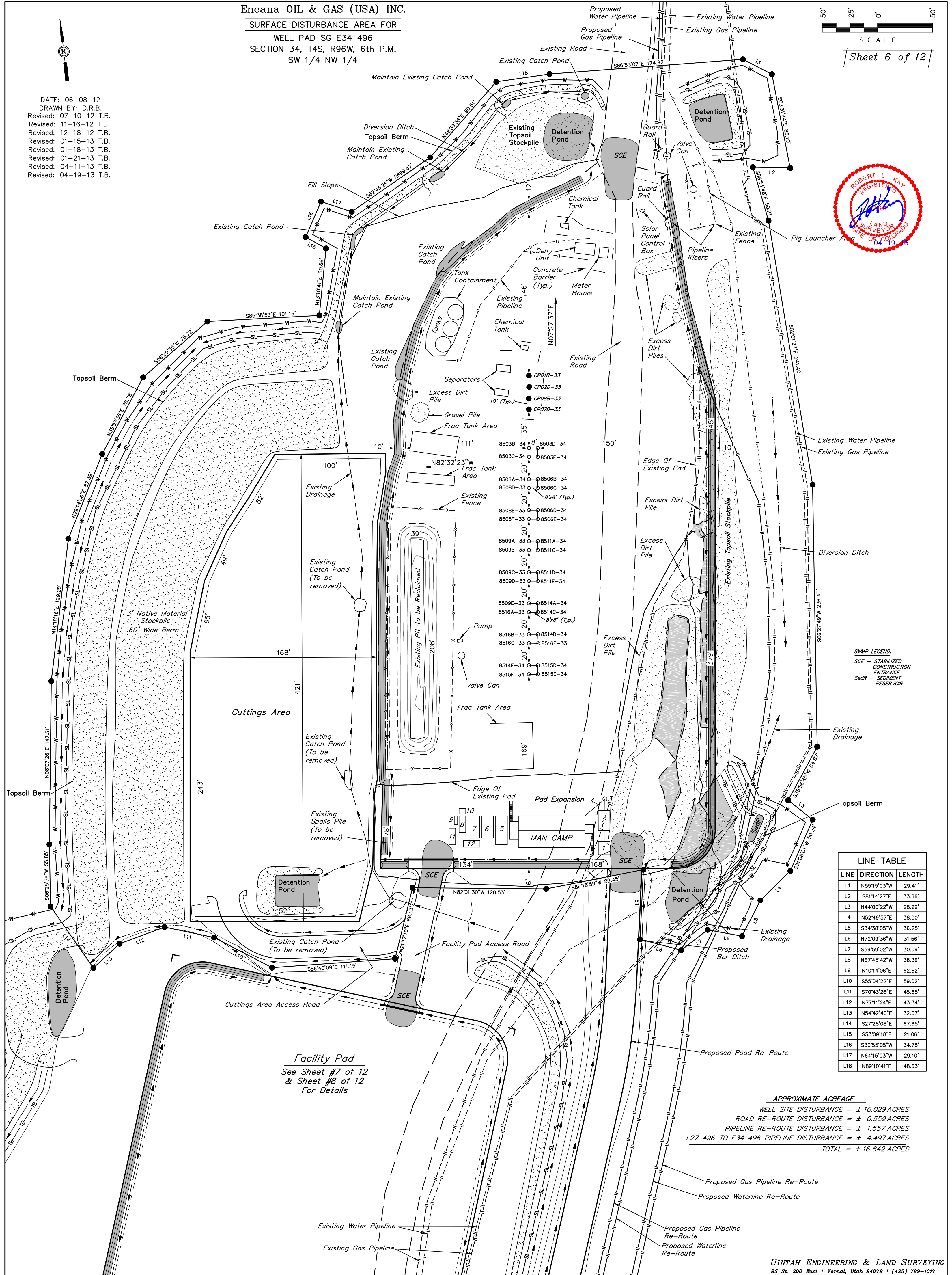
Revised: 04-11-13 T.B.

Revised: 04-19-13 T.B.



SCALE

Sheet 6 of 12



**SWMP LEGEND:**  
SCE - STABILIZED CONSTRUCTION ENTRANCE  
SedR - SEDIMENT RESERVOIR

LINE	DIRECTION	LENGTH
L1	N55°15'03"W	29.41'
L2	S81°14'27"E	33.66'
L3	N44°00'22"W	28.29'
L4	N52°49'57"E	38.00'
L5	S34°38'05"W	36.25'
L6	N72°09'36"W	31.56'
L7	S59°59'02"W	30.09'
L8	N67°45'42"W	38.36'
L9	N10°14'06"E	62.82'
L10	S55°04'22"E	59.02'
L11	S70°43'26"E	45.65'
L12	N77°11'24"E	43.34'
L13	N54°42'40"E	32.07'
L14	S27°28'08"E	67.65'
L15	S53°09'18"E	21.06'
L16	S30°55'05"W	34.78'
L17	N64°15'03"W	29.10'
L18	N89°10'41"E	48.63'

### APPROXIMATE ACREAGE

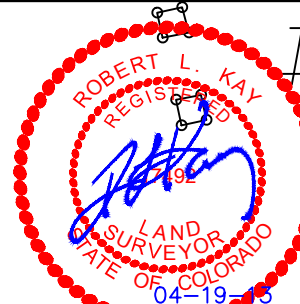
WELL SITE DISTURBANCE = ± 10.029 ACRES  
ROAD RE-ROUTE DISTURBANCE = ± 0.559 ACRES  
PIPELINE RE-ROUTE DISTURBANCE = ± 1.557 ACRES  
L27 496 TO E34 496 PIPELINE DISTURBANCE = ± 4.497 ACRES  
TOTAL = ± 16.642 ACRES

**Facility Pad**  
See Sheet #7 of 12  
& Sheet #8 of 12  
For Details



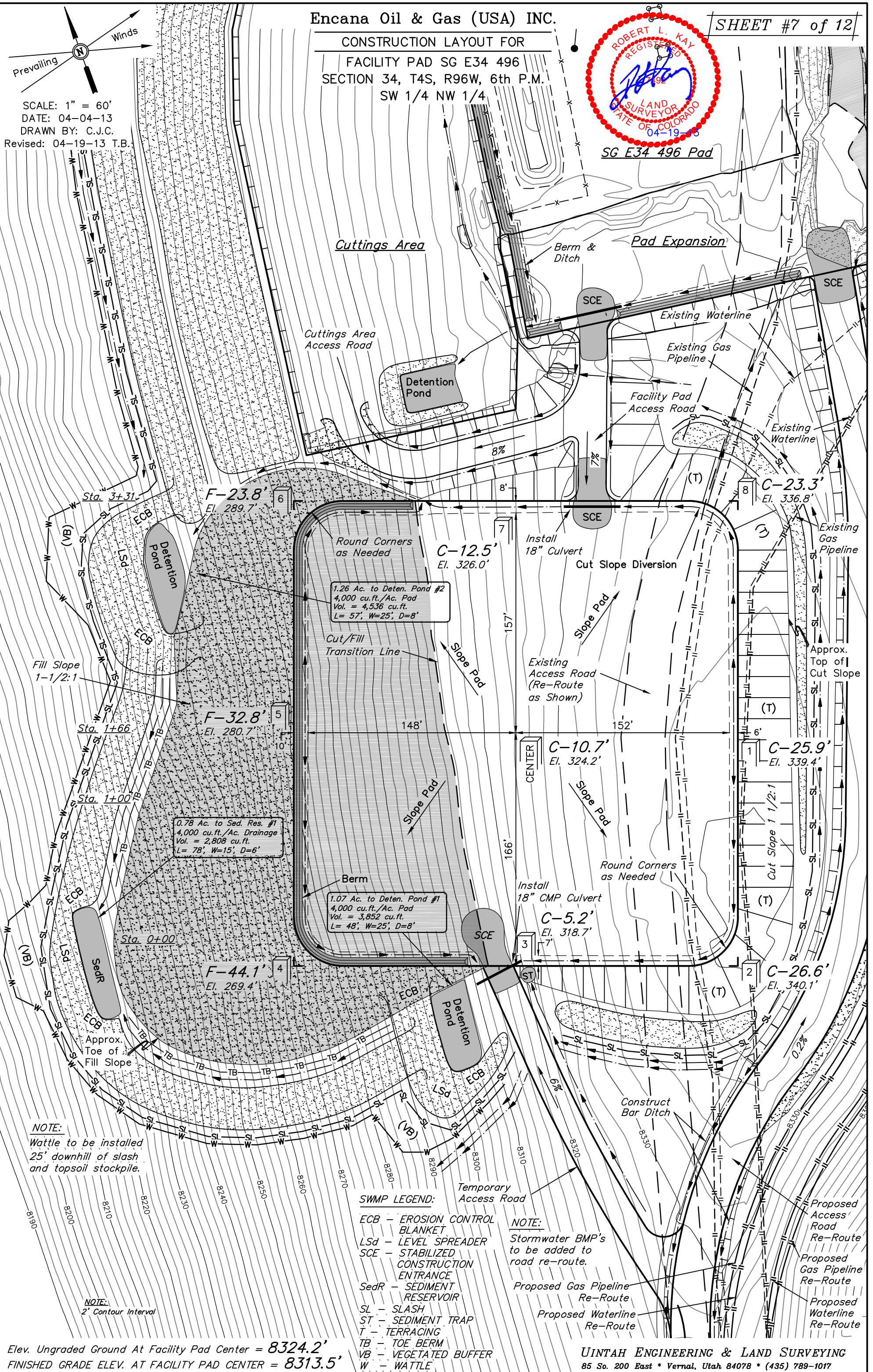
## CONSTRUCTION LAYOUT FOR

FACILITY PAD SG E34 496  
SECTION 34, T4S, R96W, 6th P.M.  
SW 1/4 NW 1/4



SG E34 496 Pad

SCALE: 1" = 60'  
DATE: 04-04-13  
DRAWN BY: C.J.C.  
Revised: 04-19-13 T.B.



## NOTE:

Wattle to be installed  
25' downhill of slash  
and topsoil stockpile.

## NOTE:

2' Contour Interval

## SWMP LEGEND:

ECB - EROSION CONTROL  
BLANKET  
Lsd - LEVEL SPREADER  
SCE - STABILIZED  
CONSTRUCTION  
ENTRANCE  
SedR - SEDIMENT  
RESERVOIR  
SL - SLASH  
ST - SEDIMENT TRAP  
T - TERRACING  
TB - TOE BERM  
VB - VEGETATED BUFFER  
W - WATTLE

## NOTE:

Stormwater BMP's  
to be added to  
road re-route.

Proposed Gas Pipeline  
Re-Route  
Proposed Waterline  
Re-Route

Elev. Ungraded Ground At Facility Pad Center = 8324.2'  
FINISHED GRADE ELEV. AT FACILITY PAD CENTER = 8313.5'

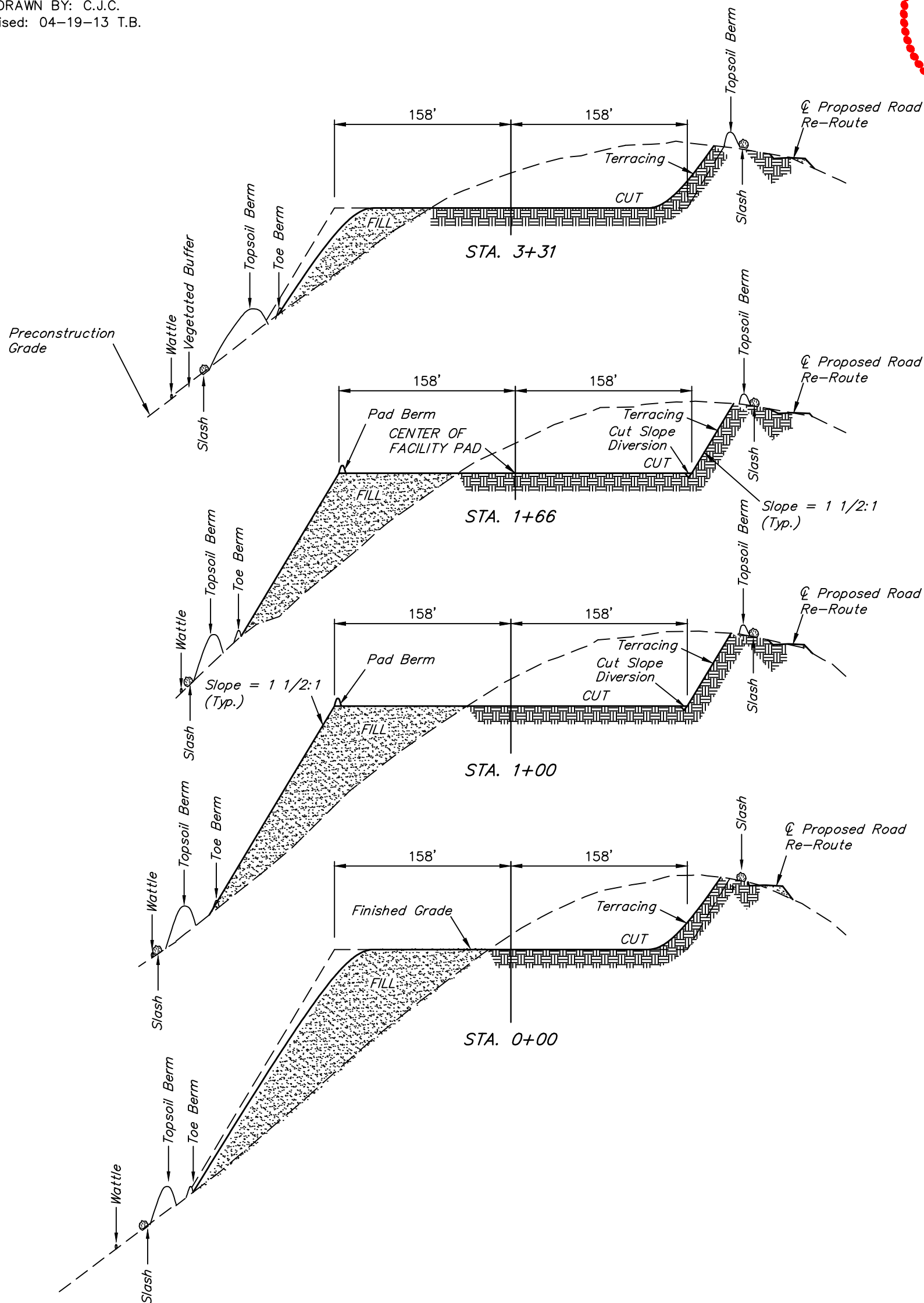
UINTAH ENGINEERING & LAND SURVEYING  
85 So. 200 East \* Vernal, Utah 84078 \* (435) 789-1017



1" = 40'  
X-Section  
Scale  
1" = 100'  
DATE: 04-04-13  
DRAWN BY: C.J.C.  
Revised: 04-19-13 T.B.

Encana Oil & Gas (USA) INC.  
CONSTRUCTION LAYOUT CROSS SECTIONS FOR  
FACILITY PAD SG E34 496  
SECTION 34, T4S, R96W, 6th P.M.  
SW 1/4 NW 1/4

SHEET #8 of 12



NOTE:  
Topsoil should not be Stripped Below Finished Grade on Substructure Area.

\* NOTE:  
FILL QUANTITY INCLUDES 5% FOR COMPACTION  
\*\* USE EXCESS MATERIAL FROM PAD EXPANSION TO CONSTRUCT FACILITY PAD (SEE FIGURE 4 FOR EXCESS MATERIAL QTY'S)

APPROXIMATE YARDAGES

(12") Topsoil Stripping	= 6,140 Cu. Yds.	EXCESS MATERIAL	= 4,010 Cu. Yds.
Remaining Location	= 43,570 Cu. Yds.	Topsoil	= 6,140 Cu. Yds.
TOTAL CUT	= 49,710 CU. YDS.	DEFICIT UNBALANCE	= <2,130>Cu. Yds.
FILL	= 45,700 CU. YDS.	(After Interim Rehabilitation)	

APPROXIMATE ACREAGE  
FACILITY PAD SITE DISTURBANCE = ± 7.807 ACRES  
FACILITY PAD ACCESS ROAD DISTURBANCE = ± 0.080 ACRES  
TOTAL DISTURBANCE = ± 7.887 ACRES

UINTAH ENGINEERING & LAND SURVEYING  
85 So. 200 East \* Vernal, Utah 84078 \* (435) 789-1017