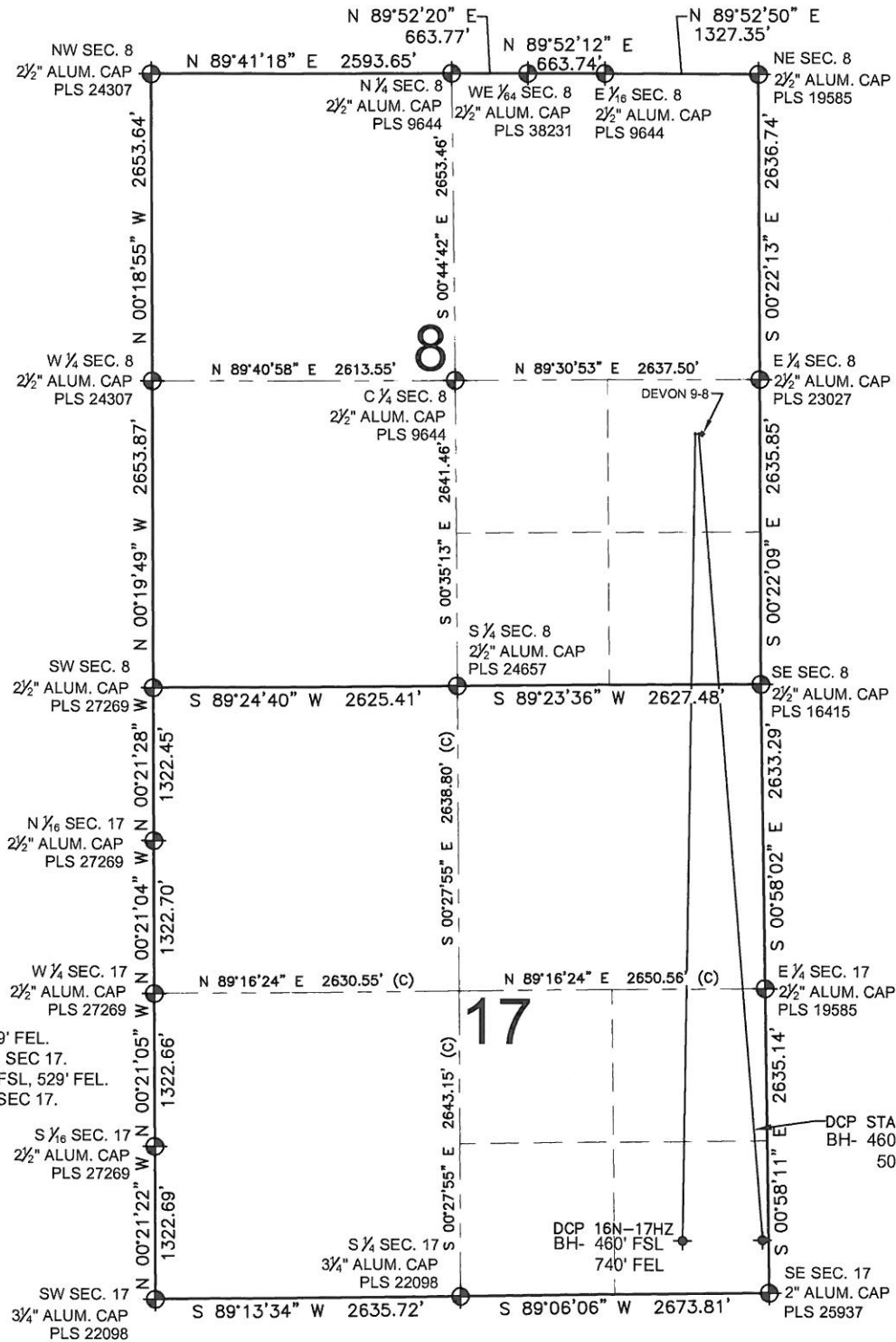


DCP STATE 38N-17HZ MULTI-WELL PLAN

SECTION 8, TOWNSHIP 3 NORTH, RANGE 66 WEST, 6TH P.M.



NOTES:

DCP 16N-17HZ TO BE AT 2168' FSL, 559' FEL.
 BOTTOM HOLE AT 460' FSL & 740' FEL, SEC 17.
 DCP STATE 38N-17HZ TO BE AT 2168' FSL, 529' FEL.
 BOTTOM HOLE AT 460' FSL & 50' FEL, SEC 17.
 DEVON 9-8 IS 2168' FSL & 499' FEL

LEGEND

- ⊙ = EXISTING MONUMENT
- = PROPOSED WELL
- ⬇ = BOTTOM HOLE
- ◆ = EXISTING WELL
- BH= BOTTOM HOLE

PREPARED BY:



KERR-MCGEE OIL & GAS ONSHORE LP

FIELD DATE: 04-08-13	SURFACE LOCATION: NE 1/4 SE 1/4, SEC. 8, T3N, R66W, 6TH P.M. WELD COUNTY, COLORADO
DRAWING DATE: 04-19-13	

