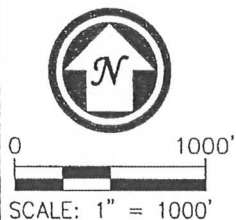
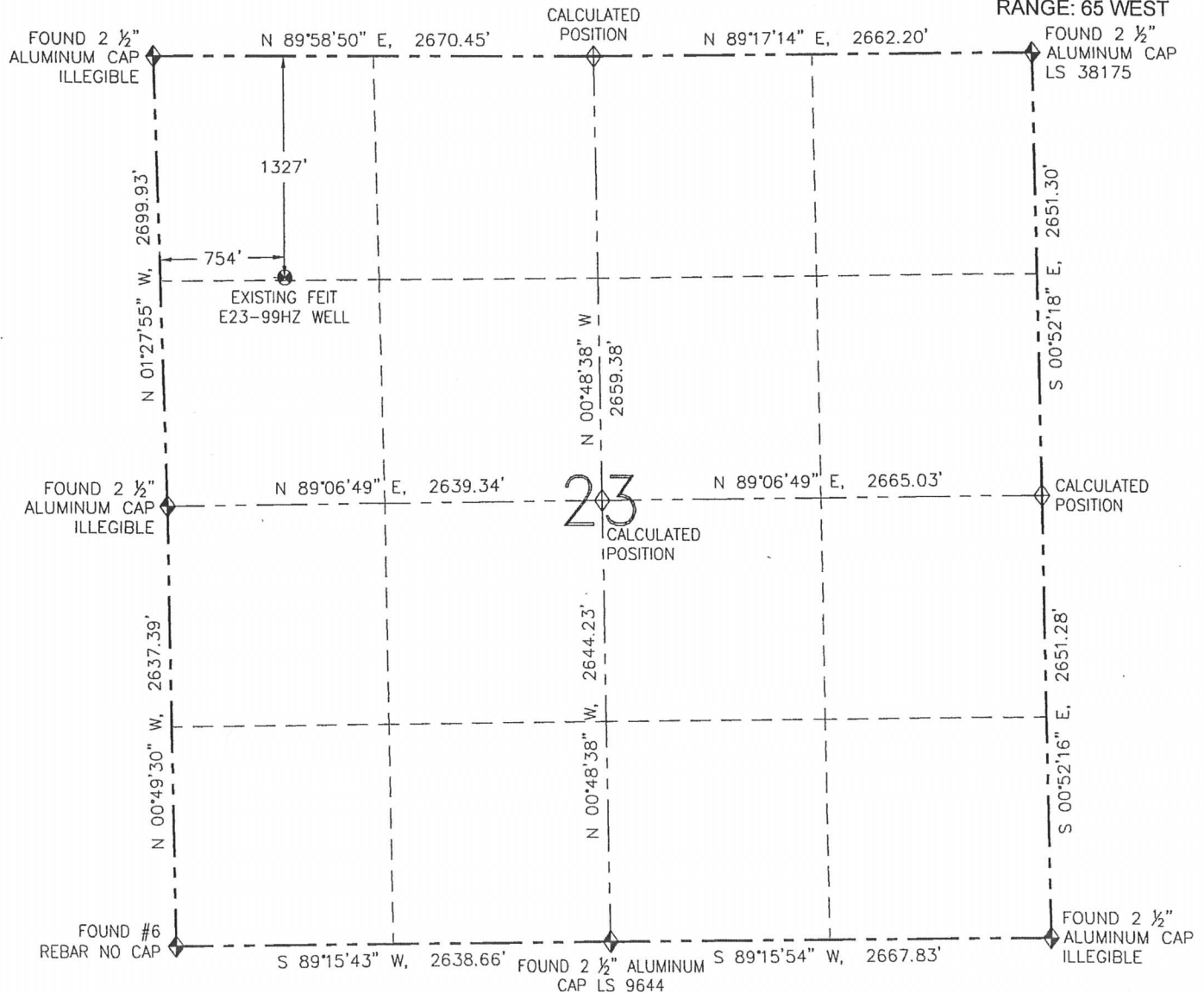


WELL AS-BUILT EXHIBIT

FEIT E23-99HZ

THIS MAP DOES NOT REPRESENT A BOUNDARY SURVEY

SECTION: 23
TOWNSHIP: 6 NORTH
RANGE: 65 WEST



SURFACE HOLE LOCATION (NAD 83)

LATITUDE: N 40.47515'
LONGITUDE: W 104.63728'
ELEVATION: 4732
PDOP: 2.6
1/4-1/4: NW NW
NEAREST PROPERTY LINE: 754' W

IN ACCORDANCE WITH A REQUEST FROM GREG WILSON-NOBLE ENERGY INC., R&R ENGINEERS-SURVEYORS, INC. HAS DETERMINED THE SURFACE HOLE LOCATION OF THE EXISTING FEIT E23-99HZ WELL TO BE 1327' FNL AND 754' FWL AS MEASURED AT (90) DEGREES FROM THE SECTION LINES OF SECTION 23, TOWNSHIP 6 NORTH, RANGE 65 WEST OF THE 6TH PRINCIPAL MERIDIAN, WELD COUNTY, COLORADO.

I HEREBY CERTIFY THAT THIS WELL AS-BUILT EXHIBIT WAS PREPARED BY ME, OR UNDER MY DIRECT SUPERVISION, THAT THE FIELD WORK WAS COMPLETED ON 12/27/12, FOR AND ON BEHALF OF NOBLE ENERGY INC., THAT IT IS NOT A LAND SURVEY PLAT OR AN IMPROVEMENT SURVEY PLAT, AND THAT IT IS NOT TO BE RELIED UPON FOR ESTABLISHMENT OF FENCES, BUILDINGS, OR OTHER FUTURE IMPROVEMENT LINES.

LEGEND

- ⊕ EXISTING WELL
- ◆ FOUND MONUMENT
- ⊕ CALCULATED POSITION

NOTES:

1. BEARINGS ARE GRID BEARINGS OF THE COLORADO STATE PLANE COORDINATE SYSTEM, NORTH ZONE, NAD 83. THE LINEAL DIMENSIONS SHOWN HEREON ARE BASED UPON THE "U.S. SURVEY FOOT".
2. ELEVATIONS ARE BASED UPON NGS OPUS SOLUTION NAVD 88 DATUM COMPUTED USING GEOID09.
3. SURFACE USE: CROPLAND.



FIELD DATE: 12/27/12
PLOT DATE: 03/27/13
DRAWN BY: CJD
JOB NO.: NE12383
SHEET NO.: 1 of 1

NOTICE:

ACCORDING TO COLORADO LAW, YOU MUST COMMENCE ANY LEGAL ACTION BASED UPON ANY DEFECT IN THIS W.A.E. WITHIN THREE YEARS AFTER YOU FIRST DISCOVER SUCH DEFECT. IN NO EVENT MAY ANY ACTION BASED UPON ANY DEFECT IN THIS W.A.E. BE COMMENCED MORE THAN TEN YEARS FROM THE DATE OF THE CERTIFICATION SHOWN HEREON (13-80-105 C.R.S.).



DAVID C. HOLMES, PLS 32828
FOR AND ON BEHALF OF R&R ENGINEERS-SURVEYORS, INC.