

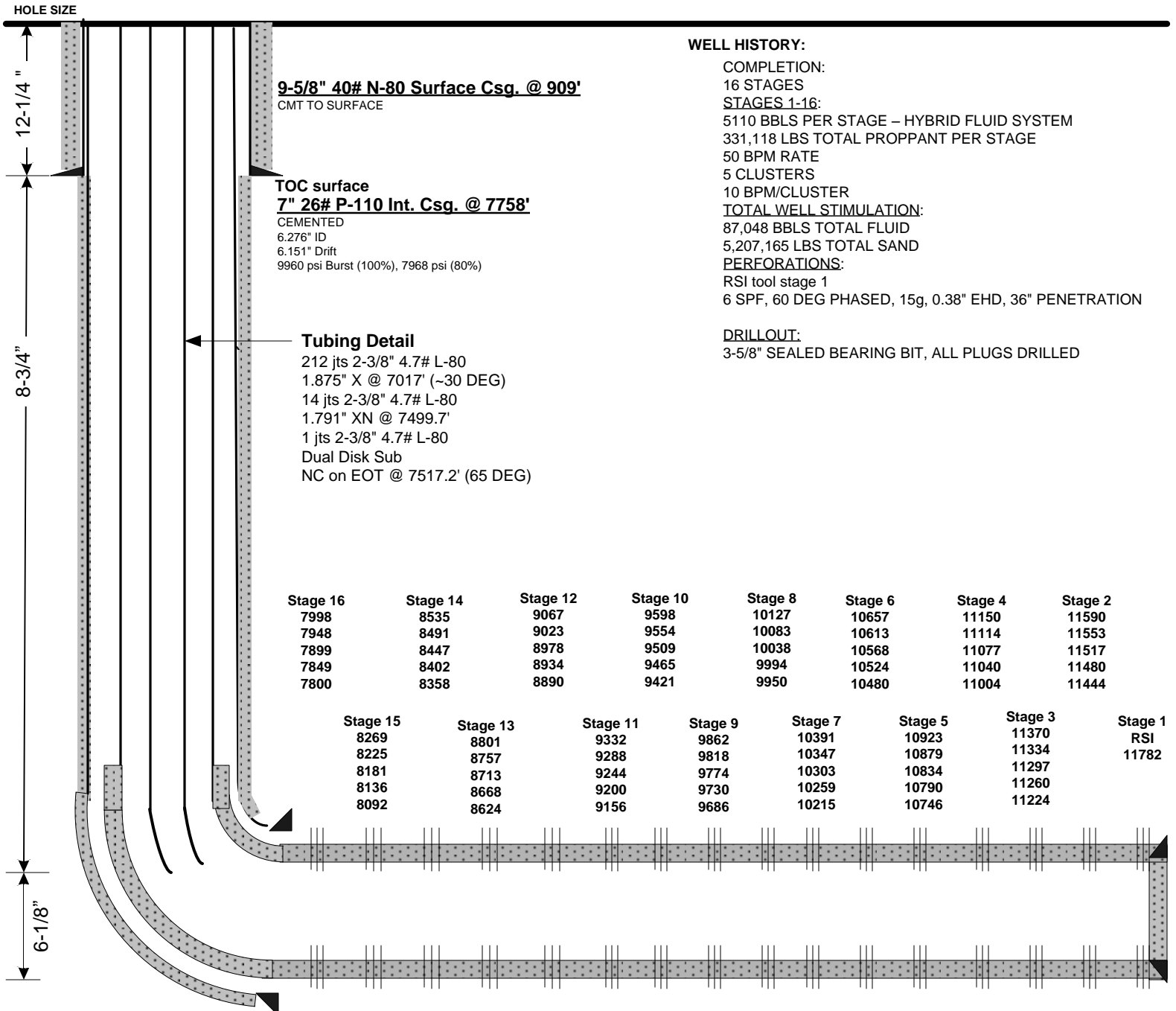
# Current Wellbore Schematic

EnCana Oil & Gas (USA) Inc.



**WELL** : Echeverria 2B-2H – Cemented Perf/Plug  
**LOCATION** : Lat: 40.17293 Long: -104.86175  
**COUNTY** : WELD **STATE:** CO  
**FIELD** : Wattenburg - Codell  
**ELEVATION** : 4858' (GL) 4871' (KB) Δ 13'

**SPUD DATE:** 8/29/12  
**COMPL. DATE:** 9/25/12  
**API #:** 05-123-35810



## WELL HISTORY:

### COMPLETION:

16 STAGES

### STAGES 1-16:

5110 BBLs PER STAGE – HYBRID FLUID SYSTEM

331,118 LBS TOTAL PROPPANT PER STAGE

50 BPM RATE

5 CLUSTERS

10 BPM/CLUSTER

### TOTAL WELL STIMULATION:

87,048 BBLs TOTAL FLUID

5,207,165 LBS TOTAL SAND

### PERFORATIONS:

RSI tool stage 1

6 SPF, 60 DEG PHASED, 15g, 0.38" EHD, 36" PENETRATION

### DRILLOUT:

3-5/8" SEALED BEARING BIT, ALL PLUGS DRILLED

## Directional Data

KOP: 6765'

30°: 7080'

60°: 7460'

80°: 7650'

90°: 7910'

Max DLS: 15.5°/100' @ 7620' MD

**Lateral Length: 4075' (Int. Shoe-TD)**

## 4-1/2" 13.5# P-110 DQX Prod. Csg @ 11,833'

CEMENTED

3.920" ID

3.795" Drift

12,410 psi Burst (100%), 9928 psi (80%)

MD: 11,879'

PBTD (FC): 11,829'

TVD: ~7375'

BHT: 240 F