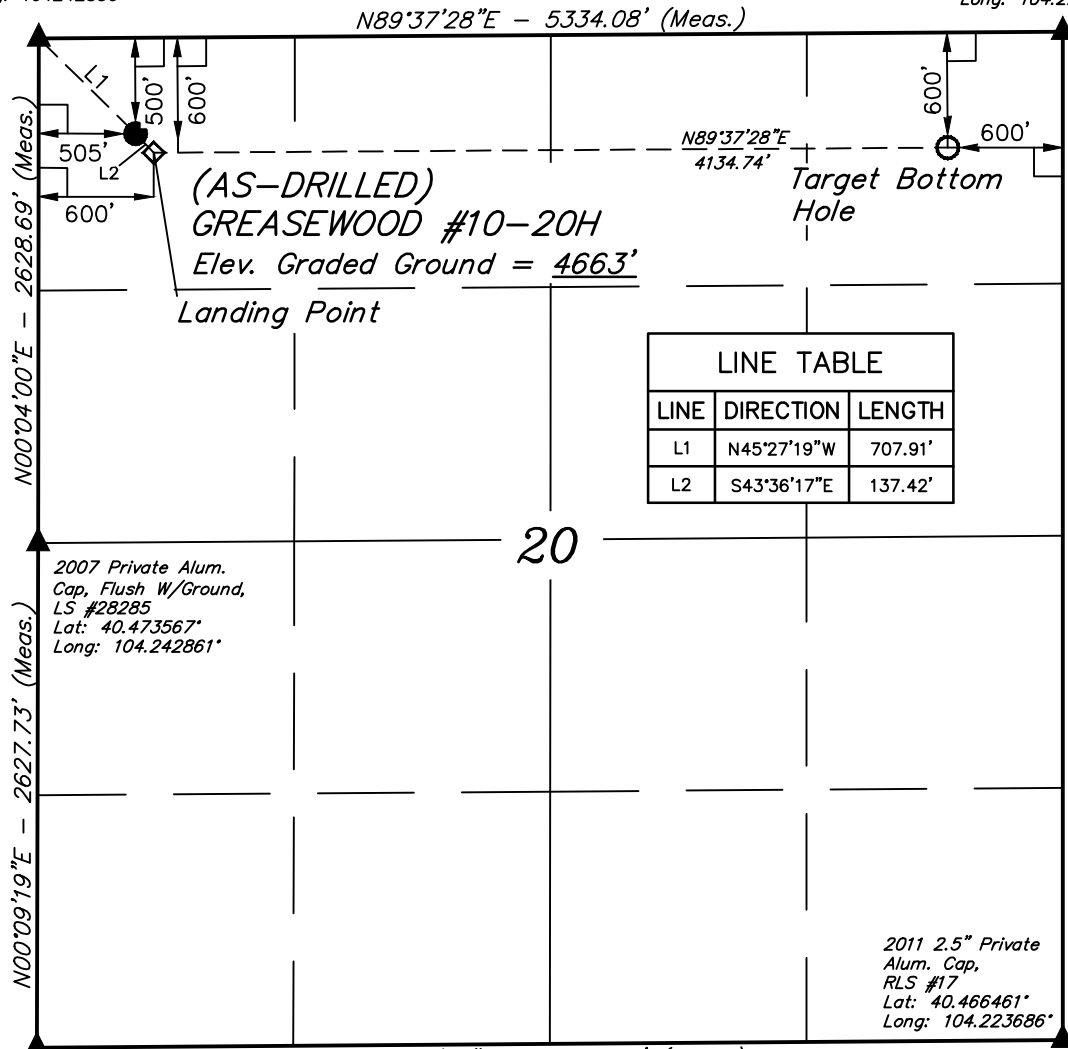


T6N, R61W, 6th. P.M.

2007 Private Alum.
Cap, 0.6' Below Ground,
LS #28285
Lat: 40.480781°
Long: 104.242850°

2011 2.5" Private
Alum. Cap, 0.2'
Below Ground,
Lat: 40.480872°
Long: 104.223678°



LINE TABLE		
LINE	DIRECTION	LENGTH
L1	N45°27'19"W	707.91'
L2	S43°36'17"E	137.42'

BILL BARRETT CORPORATION

Well location, (AS-DRILLED) GREASEWOOD #10-20H, located as shown in the NW 1/4 NW 1/4 of Section 20, T6N, R61W, 6th. P.M., Weld County, Colorado.

BASIS OF ELEVATION

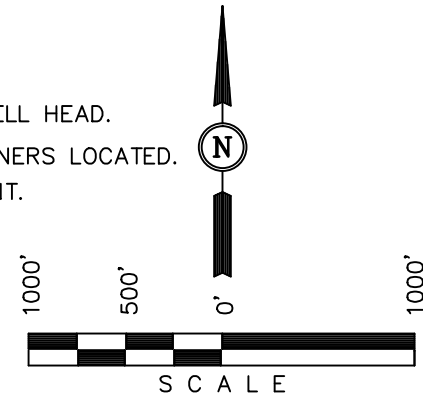
SPOT ELEVATION LOCATED AT THE NORTHEAST CORNER OF SECTION 24, T5N, R62W, 6th. P.M. TAKEN FROM THE POINT OF ROCKS, QUADRANGLE, COLORADO, WELD COUNTY, 7.5 MINUTE QUAD (TOPOGRAPHIC MAP) PUBLISHED BY THE UNITED STATES DEPARTMENT OF THE INTERIOR, GEOLOGICAL SURVEY. SAID ELEVATION IS MARKED AS BEING 4530 FEET.

BASIS OF BEARINGS

BASIS OF BEARINGS IS A G.P.S. OBSERVATION.

LEGEND:

- └ = 90° SYMBOL
- = PROPOSED WELL HEAD.
- ▲ = SECTION CORNERS LOCATED.
- ◇ = LANDING POINT.



CERTIFICATE

THIS IS TO CERTIFY THAT THE ABOVE PLAT WAS PREPARED FROM FIELD NOTES OF ACTUAL SURVEYS MADE BY ME OR UNDER MY SUPERVISION AND THAT THE SAME ARE TRUE AND CORRECT TO THE BEST OF MY KNOWLEDGE AND BELIEF.

Paul L. Barrett
 REGISTERED LAND SURVEYOR
 REGISTRATION NO. 17492
 STATE OF COLORADO
 04-05-13

2007 Private Alum.
Cap, 0.3' High,
LS #38019
Lat: 40.466356°
Long: 104.242889°

2011 2.5" Private
Alum. Cap,
RLS #17
Lat: 40.466461°
Long: 104.223686°

PDOP = 1.8

UINTAH ENGINEERING & LAND SURVEYING
 85 SOUTH 200 EAST - VERNAL, UTAH 84078
 (435) 789-1017

NAD 83 (TARGET BOTTOM HOLE)	NAD 83 (LANDING POINT)	NAD 83 (AS-DRILLED SURFACE LOCATION)
LATITUDE = 40°28'45.18" (40.479217)	LATITUDE = 40°28'44.92" (40.479144)	LATITUDE = 40°28'45.91" (40.479419)
LONGITUDE = 104°13'33.01" (104.225836)	LONGITUDE = 104°14'26.50" (104.240694)	LONGITUDE = 104°14'27.73" (104.241036)
NAD 27 (TARGET BOTTOM HOLE)	NAD 27 (LANDING POINT)	NAD 27 (AS-DRILLED SURFACE LOCATION)
LATITUDE = 40°28'45.24" (40.479233)	LATITUDE = 40°28'44.98" (40.479161)	LATITUDE = 40°28'45.97" (40.479436)
LONGITUDE = 104°13'31.19" (104.225331)	LONGITUDE = 104°14'24.68" (104.240189)	LONGITUDE = 104°14'25.91" (104.240531)
STATE PLANE NAD 83 COLORADO NORTH	STATE PLANE NAD 83 COLORADO NORTH	STATE PLANE NAD 83 COLORADO NORTH
N: 1419965.55 E: 3354440.97	N: 1419880.20 E: 3350308.40	N: 1419978.74 E: 3350212.01
STATE PLANE NAD 27 COLORADO NORTH	STATE PLANE NAD 27 COLORADO NORTH	STATE PLANE NAD 27 COLORADO NORTH
N: 419966.20 E: 2354590.92	N: 419880.90 E: 2350458.22	N: 419979.44 E: 2350361.82

SCALE 1" = 1000'	DATE SURVEYED: 04-04-13	DATE DRAWN: 04-05-13
PARTY Z.B. A.G. K.O.	REFERENCES G.L.O. PLAT	
WEATHER WARM	FILE BILL BARRETT CORPORATION	