

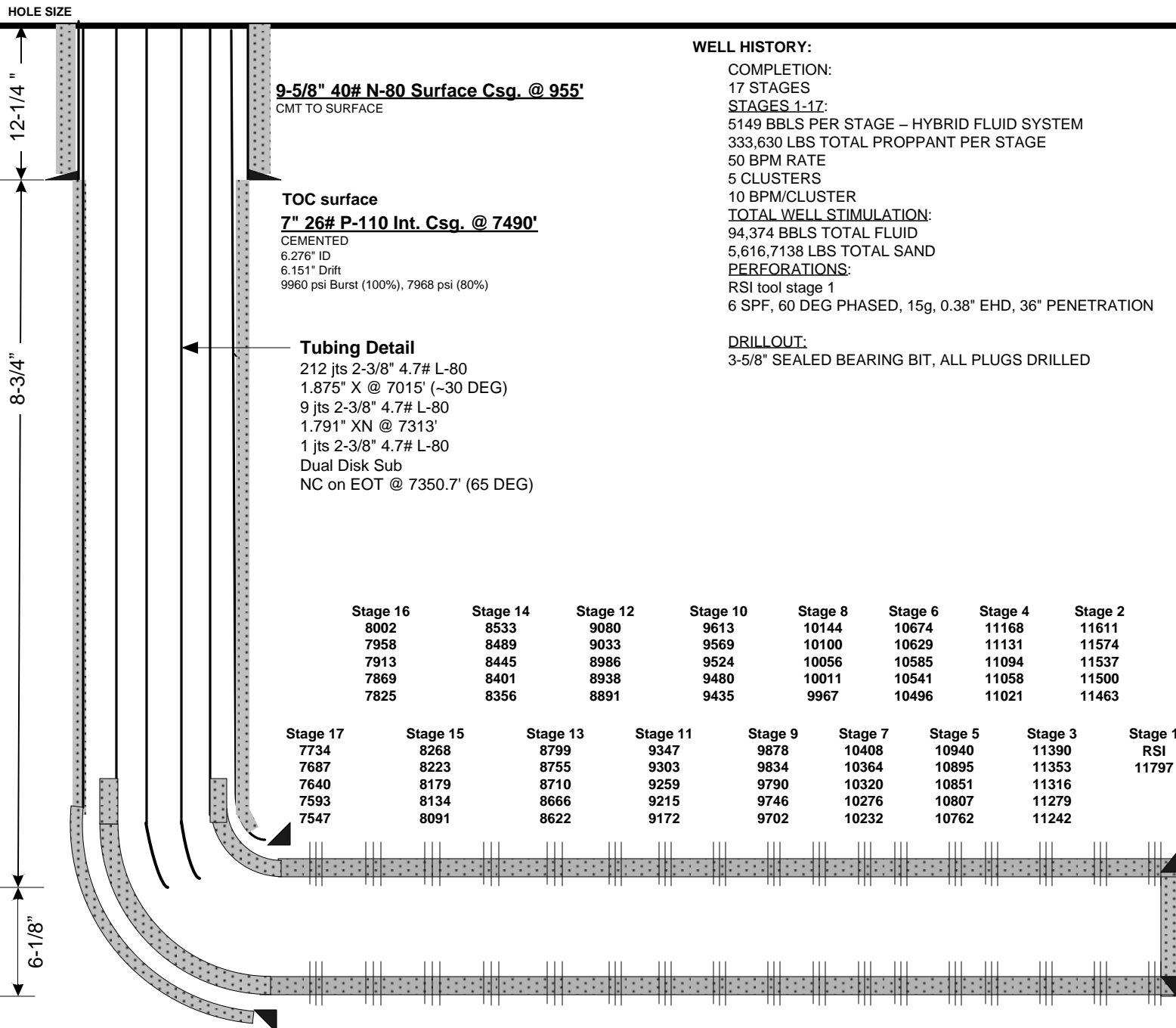
# Current Wellbore Schematic

EnCana Oil & Gas (USA) Inc.



**WELL** : Echeverria 2A-2H – Cemented Perf/Plug  
**LOCATION** : Lat: 40.172930 Long: -104.861850  
**COUNTY** : WELD **STATE:** CO  
**FIELD** : Wattenburg - NIOBRARA  
**ELEVATION** : 4859' (GL) 4872' (KB)  $\Delta$  13'

**SPUD DATE:** 8/14/12  
**COMPL. DATE:** 9/25/12  
**API #:** 05-123-35811



## Directional Data

KOP: 6640'  
30°: 7050'  
60°: 7300'  
80°: 7430'  
90°: 7530'  
Max DLS: 19.35°/100' @ 7431' MD

**Lateral Length: 4360' (Int. Shoe-TD)**

## 4-1/2" 13.5# P-110 DQX Prod. Csg @ 11,850'

CEMENTED  
3.920" ID  
3.795" Drift  
12,410 psi Burst (100%), 9928 psi (80%)

MD: 11,850'  
PBTD (FC): 11,846'  
TVD: ~7175'  
BHT: 240 F