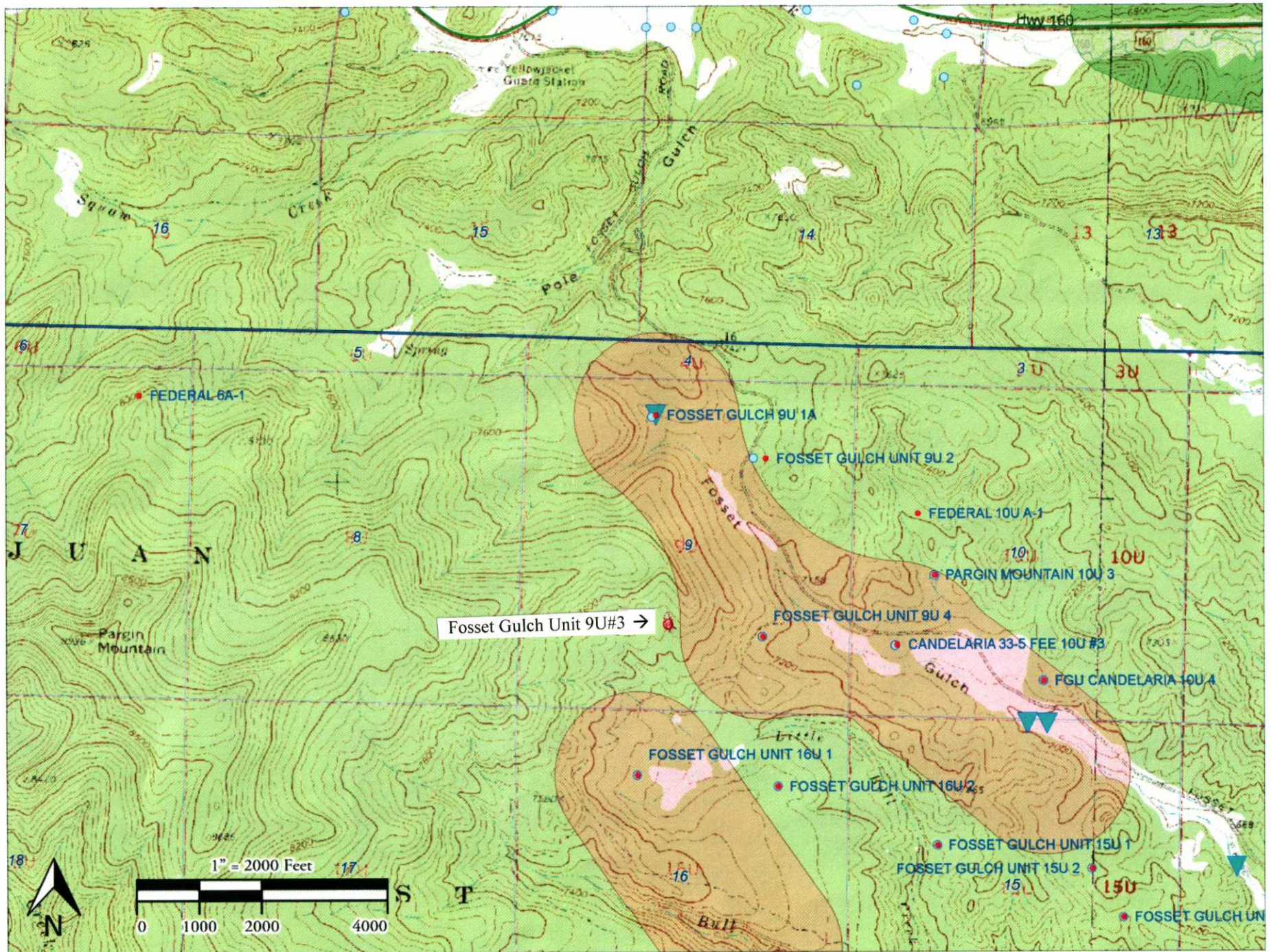
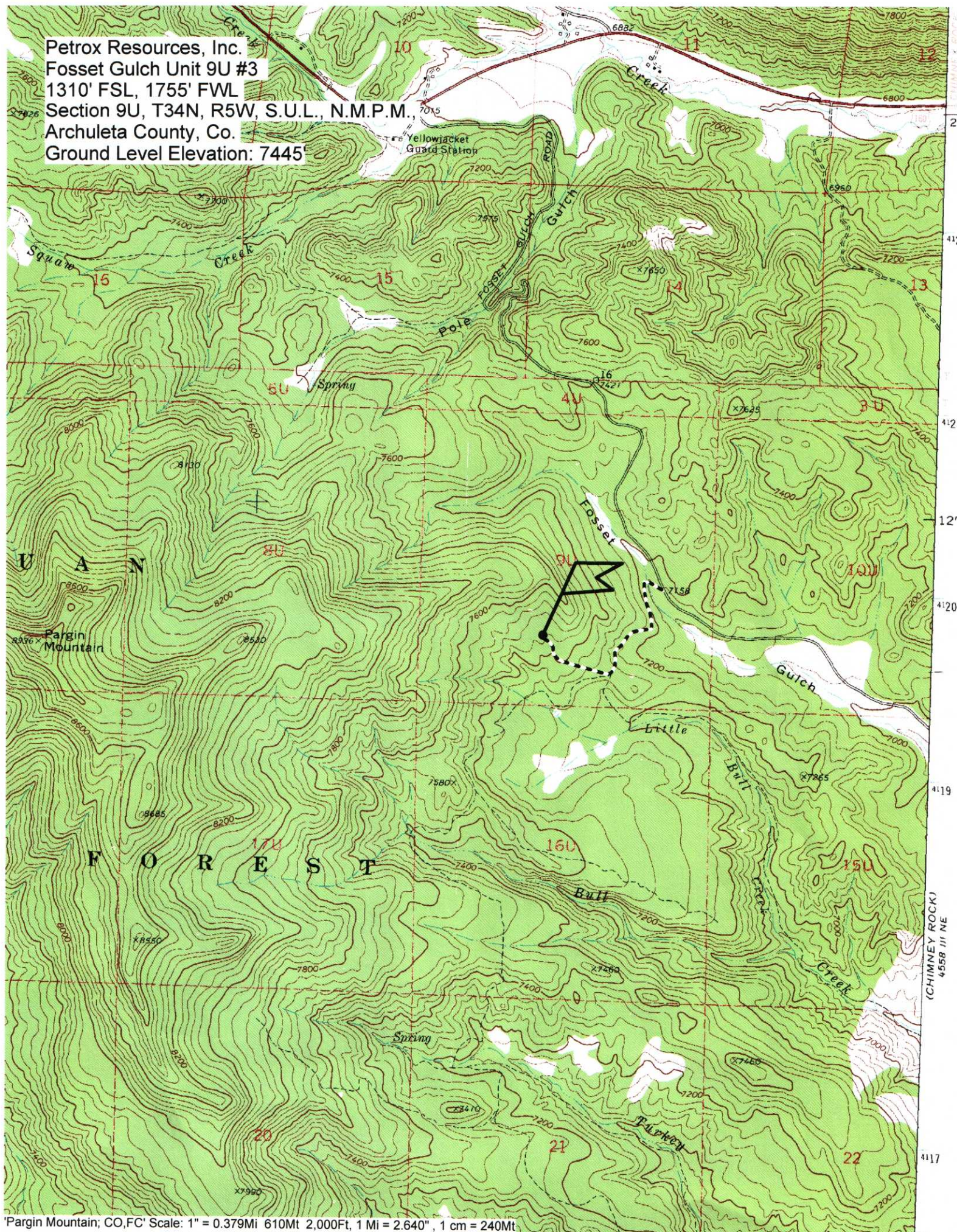


# Fosset Gulch Unit 9U#3 APD





Petrox Resources, Inc.  
Fosset Gulch Unit 9U #3  
1310' FSL, 1755' FWL  
Section 9U, T34N, R5W, S.U.L., N.M.P.M.,  
Archuleta County, Co.  
Ground Level Elevation: 7445'





# 9U#3 WELL PAD & ACCESS ROAD

Archuleta County, Colorado - December 3, 2010  
PETROX RESOURCES, INC., DURANGO, CO  
A Colorado Corporation, Mike Clark, President



CALL UNCC  
TWO WORKING DAYS  
BEFORE YOU DIG  
1-800-922-1987  
UTILITY NOTIFICATION  
CENTER OF COLORADO

SHEET

1

OF

Russell Planning &  
Engineering, Inc.  
294 Main Avenue, Unit C  
Durango, Colorado 81301  
Phone: (970) 385-4548  
Fax: (970) 385-4502

PETROX RESOURCES INC.

9U#3

COVER SHEET

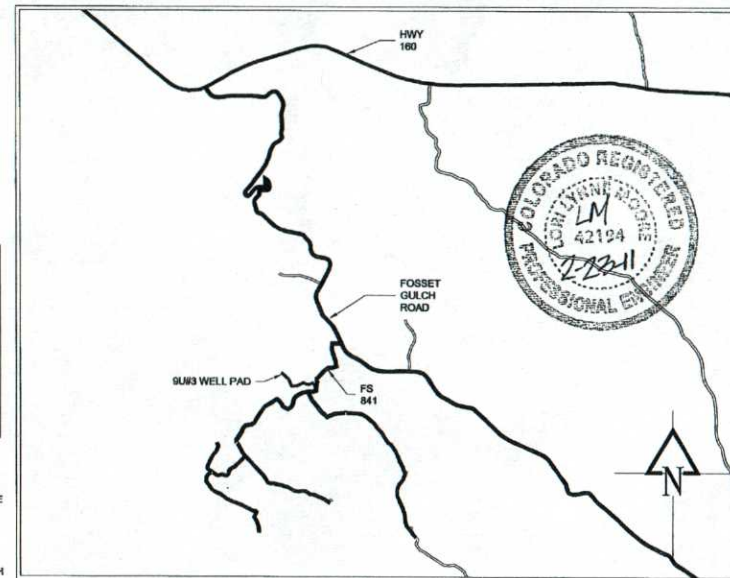
Drawn/Checked:  
Drafted by:  
DATE: 2/23/2011

ACAD FILE: RUSSELL\_9U#3\_COVER.dwg

REVISIONS: Δ XX

8/1/2008 8:00:00 AM 8/1/2008 8:00:00 AM 8/1/2008 8:00:00 AM 8/1/2008 8:00:00 AM 8/1/2008 8:00:00 AM 8/1/2008 8:00:00 AM 8/1/2008 8:00:00 AM 8/1/2008 8:00:00 AM 8/1/2008 8:00:00 AM 8/1/2008 8:00:00 AM

## LOCATION MAP



## LEGEND

- EXISTING TREE
- EXISTING 10' CONTOUR ELEVATION
- EXISTING 2' CONTOUR ELEVATION
- PROPOSED 10' CONTOUR ELEVATION
- PROPOSED 2' CONTOUR ELEVATION
- PROPOSED DISTURBANCE LIMIT
- DRAINAGE SWALE

## WELL ROAD AND PAD DESIGN SHEET INDEX

SHEET 1	COVER
SHEET 2-3	9U#3 ACCESS ROAD PLAN AND PROFILES
SHEET 4	9U#3 WELL PAD DESIGN
SHEET 5-6	9U#3 DETAILS
SHEET 7-8	9U#3 ROAD CROSS SECTIONS
SHEET 9	9U#3 DRAINAGE MAP

### GENERAL PROJECT DESCRIPTION:

CONTRACTOR SHALL CONSTRUCT A NEW GRAVEL ROAD BED TO SERVE AS THE WELL PAD ACCESS ROAD FOR 9U#3 (1900 FT). THE SITE IS LOCATED ON THE SOUTH SIDE OF FOSSETT GULCH ROAD IN ARCHULETA COUNTY, COLORADO, ON FOREST SERVICE ROAD 841 AS SHOWN ON THE VICINITY MAP PER THIS SHEET. THE WORK SHALL CONFORM TO THE "SURFACE USE PLAN" DOCUMENT FOR "9U#3 & 16U#3-3" AND "FP-03 STANDARD SPECIFICATIONS FOR CONSTRUCTION OF ROADS AND BRIDGES ON FEDERAL HIGHWAY PROJECTS." FP-03 SUPERCEDES THE 1998 FOREST SERVICE SPECIFICATION ("FOREST SERVICE STANDARD SPECIFICATIONS FOR CONSTRUCTION OF ROADS AND BRIDGES"). THE CONTRACTOR SHALL COORDINATE WITH THE PROJECT ENGINEER AND THE FOREST SERVICE IN ACCORDANCE WITH THE STIPULATIONS OF THE ROAD USE PERMIT (RUP), COUNTY/STATE/FEDERAL GOVERNMENT REGULATIONS, AND THE BLM'S CONDITIONS OF APPROVAL.

THE ROAD AND PAD CONSTRUCTION SEQUENCE SHALL BE AS FOLLOWS:

1. ESTABLISH CLEARING LIMITS FOR ROAD AND PAD CONSTRUCTION.  
"CONFINE ALL DISTURBANCE TO EXISTING CLEARED AREA AND CONSTRUCTION LIMITS PER FOREST SERVICE "SURFACE USE PLAN" FOR THE 9U#3 WELL. SPECIFICALLY MARKED TREES ARE TO BE REMOVED WHICH ARE LOCATED WITHIN THE CONSTRUCTION DISTURBANCE LIMITS AS IDENTIFIED BY THE TIMBER CRUISE SITE.
2. FOREST SERVICE (FS) TO APPROVE CLEARING LIMITS AND CONSTRUCTION LIMITS AS WELL AS FLAG TOPSOIL STORAGE AREAS.
3. CLEAR AND GRUB TREES AND BRUSH
4. INSTALL NECESSARY EROSION CONTROL MEASURES AND MAINTAIN THEM DURING CONSTRUCTION UNTIL FINAL STABILIZATION IS REACHED.
5. STRIP TOP 6" OF TOPSOIL AND STORE IN FLAGGED STORAGE AREAS IN ACCORDANCE WITH FP-03 SECTION 204.05.
6. CONSTRUCT ROADS TO SUBGRADE, SLOPES, AND DITCHES.  
A. THE WIDTH OF THE WELL ACCESS ROADS WILL BE 14 FT AS SHOWN ON THE ATTACHED DRAWINGS AND WILL BE CURVE WIDENED FOR DESIGN VEHICLES AS SHOWN ON SHEETS OF THIS SET.  
\*PROPOSED 2:1 ROAD CONSTRUCTION SLOPES ARE CONSIDERED FINAL FOR RECLAMATION.
7. INSTALL ALL PROPOSED PIPELINES 6' EITHER SIDE OF CENTERLINE WITHIN THE ROAD CORRIDOR.
8. INSTALL PROPOSED CULVERTS
9. GRAVEL ROAD AND PAD:  
A. PLACE 8" COMPACTED DEPTH OF CL2  
B. PLACE 4" COMPACTED DEPTH OF CL6  
\*GRAVEL THAT IS IMPACTED BY FLOWLINE CONSTRUCTION OR INTERIM RECLAMATION ACTIVITIES SHALL BE REPLACED, HAULED OFFSITE, OR BURIED UNDER AT LEAST 3' OF FILL IN A CUT AREA AS APPROPRIATE.
10. DRILL WELL
11. IF CUTTINGS MEET TABLE 9.10, BURY CUTTINGS IN CUT SLOPE WITH 2' OF COVER. (SEE SHEET 4 FOR LOCATION)
12. PERFORM RECLAMATION WORK FOR ALL DISTURBED AREAS:  
A. SPREAD TOPSOIL 4" DEPTH ON FINAL SLOPES IN ACCORDANCE WITH FP-03 SECTION 824.04  
B. PERFORM HORIZONTAL GROUTER TRACKING ON TOPSOILED SLOPES  
C. SEEDING SHALL BE IN ACCORDANCE WITH FP-03 625.07 (B)  
D. MULCHING SHALL BE IN ACCORDANCE WITH FP-03 (B)  
\*ALL DISTURBED AREAS WITHIN WELL PAD SHALL BE EITHER SLOPED, TOPSOILED (MINIMUM OF 6" DEPTH) AND HYDROSEEDING OR GRAVELED WITH CLASS 6 (MINIMUM 4" DEPTH). RESEED SLOPES TO ESTABLISH "VEGETATION".  
- PAINT ALL SURFACE FACILITIES SUDAN BROWN.

9	2/23/2011	RUSSELL: 9U#3 SUBMITTAL TO FOREST SERVICE FOR REVIEW REVISED SHEETS	ALL SHEETS
8	2/14/2011	RUSSELL: 9U#3 SUBMITTAL TO FOREST SERVICE FOR REVIEW REVISED SHEETS	ALL SHEETS
7	2/1/2011	RUSSELL: 9U#3 SUBMITTAL TO FOREST SERVICE FOR REVIEW REVISED EQUIPMENT	ALL SHEETS
6	1/5/2011	RUSSELL: 9U#3 SUBMITTAL TO FOREST SERVICE FOR REVIEW REVISED EQUIPMENT	ALL SHEETS
5	12/6/10	RUSSELL: 9U#3 SUBMITTAL TO FOREST SERVICE FOR REVIEW	ALL SHEETS
4	11/19/10	RUSSELL: ONSITE WALK OF 9U#3 ACCESS ROAD W/ FOREST SERVICE TO REVIEW STAKED ALIGNMENT	
3	12/30/09	GAS AND WATER PIPES ADDED TO ROAD DESIGN	
2	1/23/09	FIRST SUBMITTAL TO FOREST SERVICE FOR REVIEW. SENT COPIES TO PETROX AND EXOK FOR REVIEW.	ALL SHEETS
1	10/14/08	PERFORM FIRST ONSITE WALK OF ACCESS ROADS WITH FOREST SERVICE TO REVIEW POTENTIAL DRAINAGE ISSUES. SEND COPY SENT TO MIKE CLARK.	ALL SHEETS

ACCEPTED



TEE CONNECTION  
SEE PLANS BY  
PEREGRINE GROUP  
DATED 5/28/99

APPROX. LOCATION  
OF EXISTING VALVE  
BOX

EXISTING 18" CMP

DIRECT DRAINAGE DITCH TO DRAIN  
TO EXISTING 18" CMP TO THE NORTH  
1' DEPTH, 2:1 SIDE SLOPES

25'00' FS 84' ROAD

15'00' FS 15'00' ACCESS ROAD

CURVE WIDENING 17.5'

V-DITCH  
SEE TYPICAL ACCESS  
ROAD SECTION DETAIL,  
SHEET 5

INSTALL 18 inch CMP, 45° SKEW  
WITH RIPRAP OUTLET  
SEE SHEET 6 FOR CULVERT & RIPRAP  
INSTALLATION DETAILS

CULVERT INLET  
PROTECTION (TYP.)  
SEE SHEET 6 FOR  
INSTALLATION DETAILS

STRAW WATTLE (TYP.)  
SEE SHEET 6 FOR  
INSTALLATION DETAILS

PROPOSED GAS AND  
WATERLINE

INSTALL 2 ROCK CHECK DAMS  
UPSTREAM OF CULVERT INLETS  
WHERE FLOWLINE IS STEEPENED TO  
PROVIDE MINIMUM COVER OVER  
CULVERT (TYP.)  
SEE SHEET 6 FOR INSTALLATION  
DETAILS

STRAW WATTLES (TYP.)

CURVE WIDENING 17.3'

IF NECESSARY, DIG DITCH TO  
PROVIDE POSITIVE DRAINAGE FROM  
FLAT AREA

EDGE OF PROPOSED GRAVEL ROAD,  
14' WIDE (TYP) EXCEPT WHERE  
NOTED OTHERWISE.

TOPO BOUNDARY (TYP.)

AREA OF INTERPOLATED  
TOPO FOR FINAL  
PROPOSED SURFACE  
CREATION

DISTURBANCE LIMIT IS  
DEFINED AS 40' WIDE (TYP.)  
UNLESS WIDENED FOR  
ULTIMATE GRADING  
SLOPES

CURVE WIDENING 12.1'

STRAW WATTLE (TYP.)  
SEE SHEET 6 FOR  
INSTALLATION DETAILS

C.W. STA 5+19

C.W. STA 6+35

CURVE WIDENING 9.5'

INSTALL 18 inch CMP  
WITH RIPRAP OUTLET  
SEE SHEET 6 FOR CULVERT & RIPRAP  
INSTALLATION DETAILS

CULVERT INLET  
PROTECTION (TYP.)  
SEE SHEET 6 FOR  
INSTALLATION DETAILS

INSTALL 18 inch CMP  
WITH RIPRAP OUTLET  
SEE SHEET 6 FOR CULVERT & RIPRAP  
INSTALLATION DETAILS

# NOTES:

1. CONTRACTOR SHALL WALK ALL AREAS WITH FOREST SERVICE AND ENGINEER PRIOR TO CONSTRUCTION ACTIVITIES.
2. CONTRACTOR SHALL MAKE EFFORTS TO MINIMIZE IMPACTS TO SURROUNDING VEGETATION.
3. CONTRACTOR SHALL ADJUST CULVERTS TO MATCH VARIED FIELD CONDITIONS.



CALL UNCE  
TWO WORKING DAYS  
BEFORE YOU DIG  
1-800-922-1987  
UTILITY NOTIFICATION  
CENTER OF COLORADO

PLAN  
SCALE: 1" = 80' (11x17)  
SCALE: 1" = 40' (24x36)  
80' 40' 20' 0' 40'



SHEET  
2  
OF  
9

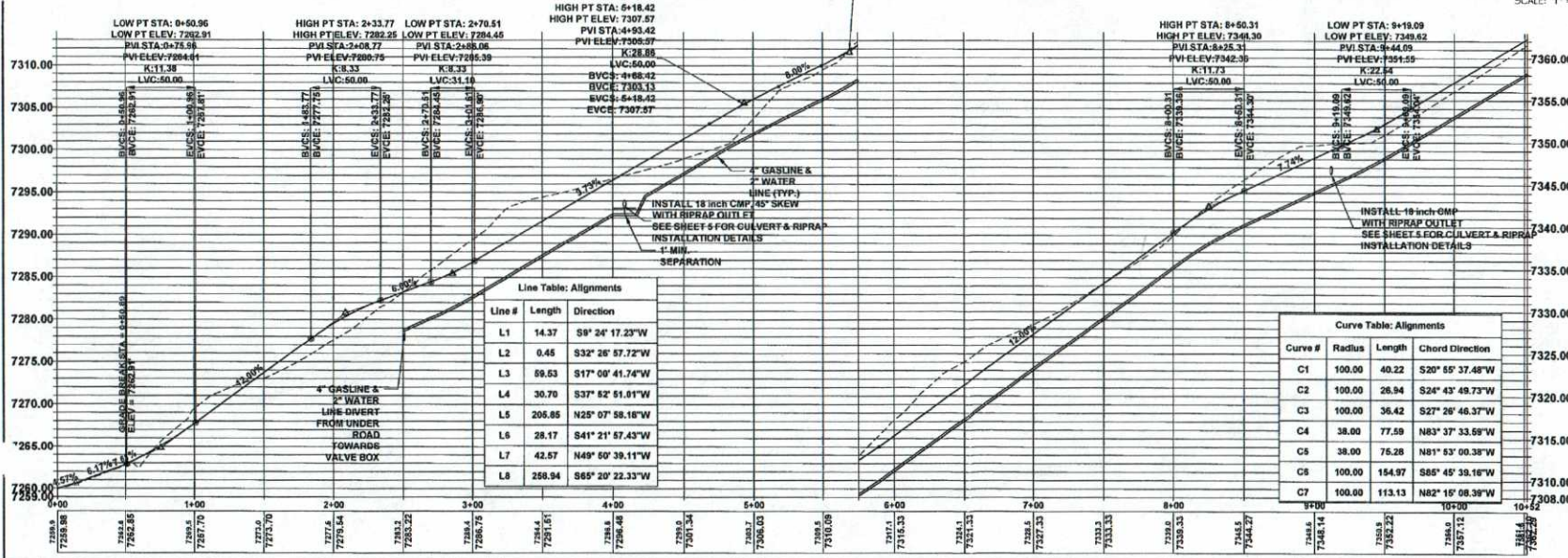
Russell Planning &  
Engineering, Inc.  
Civil Engineering Services  
934 Main Avenue, Unit C  
Durango, Colorado 81301  
Phone: (970) 366-4546  
Fax: (970) 366-4502

PETRO RESOURCES INC.  
9103 ACCESS ROAD  
PLAN AND PROFILE SHEET

Drawn/Checked:  
Dated by:  
DATE: 2/23/2011

ACAD FILE: RUSSELL\_9103.dwg  
REVISIONS: Δ xx

PROFILE  
SCALE: 1" = 40' H 1" = 5' V (24x36)  
SCALE: 1" = 80' H 1" = 10' V (11x17)

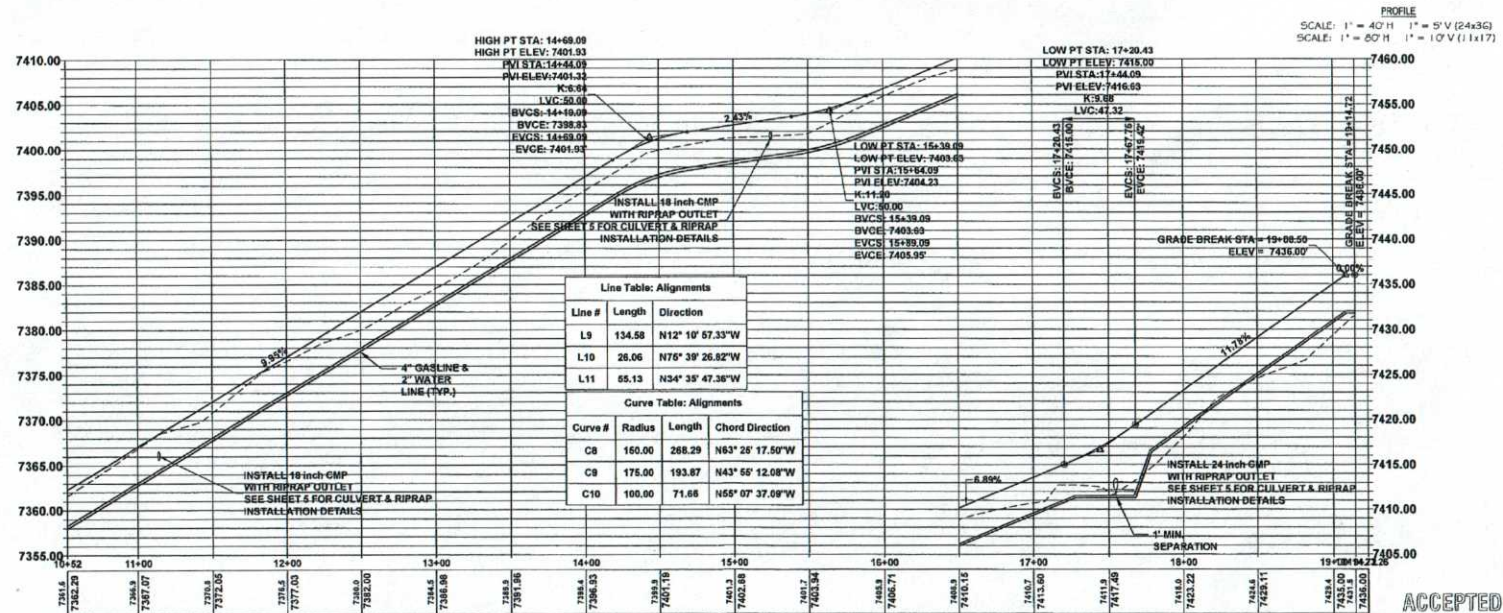
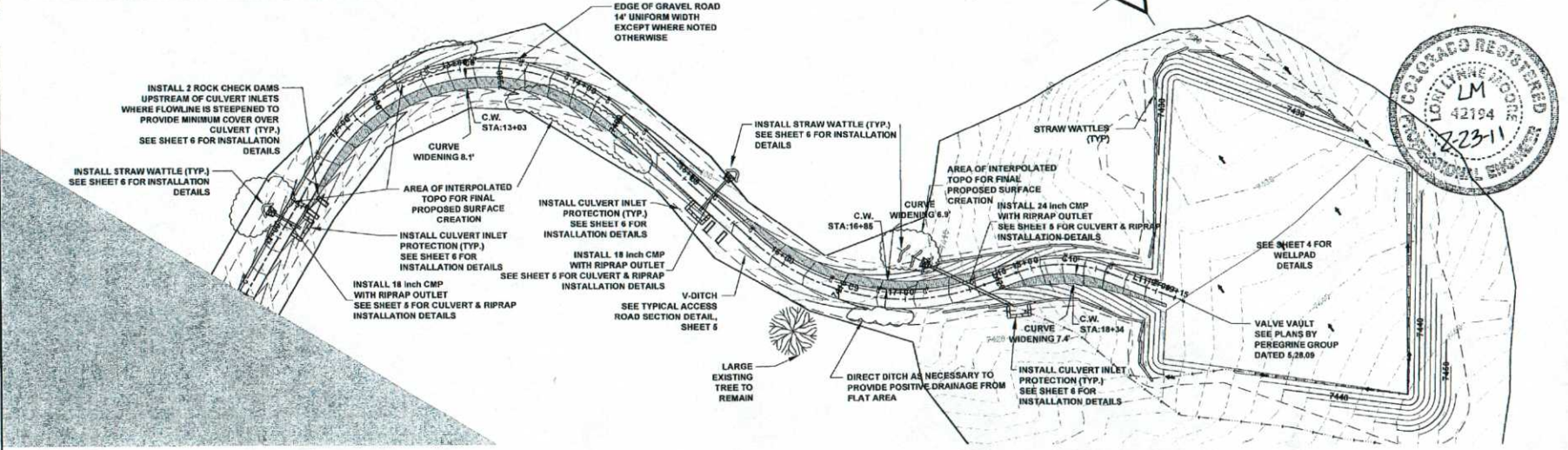


ACCEPTED



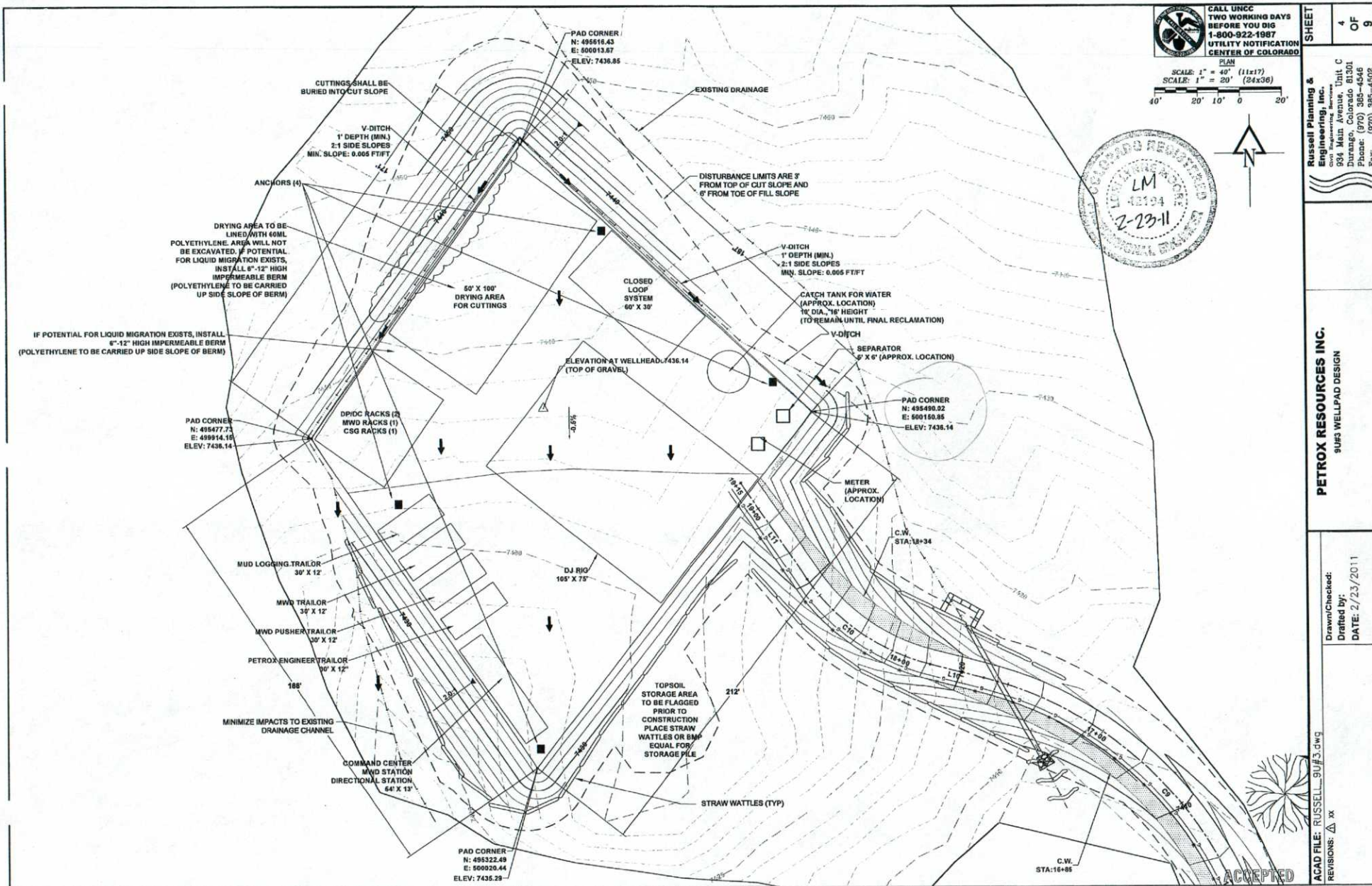
# NOTES:

1. CONTRACTOR SHALL WALK ALL AREAS WITH FOREST SERVICE AND ENGINEER PRIOR TO CONSTRUCTION ACTIVITIES.
2. CONTRACTOR SHALL MAKE EFFORTS TO MINIMIZE IMPACTS TO SURROUNDING VEGETATION.
3. CONTRACTOR SHALL ADJUST CULVERTS TO MATCH VARIED FIELD CONDITIONS.



<p>CALL UNCC TWO WORKING DAYS BEFORE YOU DIG 1-800-922-1987 UTILITY NOTIFICATION CENTER OF COLORADO</p>	<p>SHEET 3 OF 9</p>
	<p>Russell Planning &amp; Engineering, Inc. Civil Engineering Services 904 Main Avenue, Unit C Durango, Colorado 81301 Phone: (970) 385-4546 Fax: (970) 385-5506</p>
<p>PETRO RESOURCES INC. 9043 ACCESS ROAD PLAN AND PROFILE SHEET</p>	
<p>Drawn/Checked: DATE: 2/23/2011</p>	
<p>ACAD FILE: RUSSELL_9043.dwg REVISIONS: Δ xx</p>	





CALL UNCC  
TWO WORKING DAYS  
BEFORE YOU DIG  
1-800-922-1987  
UTILITY NOTIFICATION  
CENTER OF COLORADO

SCALE: 1" = 40' (11x17)  
SCALE: 1" = 20' (24x36)



**Russell Planning & Engineering, Inc.**  
934 Main Avenue, Unit C  
Durango, Colorado 81301  
Phone: (970) 385-4546  
Fax: (970) 385-4502

**PETROX RESOURCES INC.**  
SU#3 WELLPAD DESIGN

Drawn/Checked: **xx**  
DATE: 2/23/2011

ACAD FILE: RUSSELL\_SU#3.dwg  
REVISIONS: **xx**





CALL UNCE  
TWO WORKING DAYS  
BEFORE YOU DIG  
1-800-922-1987  
UTILITY NOTIFICATION  
CENTER OF COLORADO

SHEET

5

OF

9

Russell Planning &  
Engineering, Inc.  
Civil Engineering Services

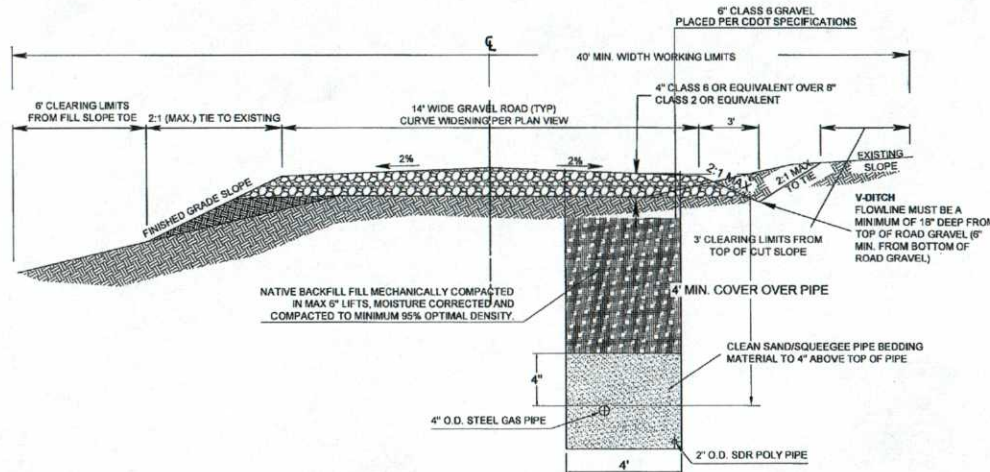
934 Main Avenue, Unit C  
Durango, Colorado 81301  
Phone: (970) 388-4546  
Fax: (970) 388-4502

PETRO RESOURCES INC.  
9043 DETAILS

Drawn/Checked:  
Drafted by:  
DATE: 2/23/2011

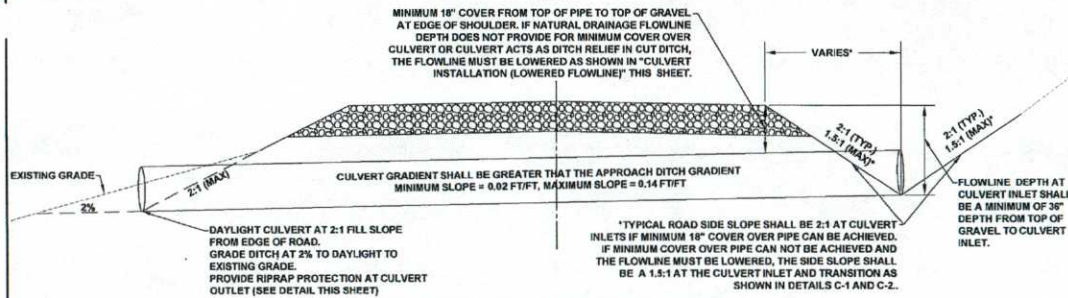
ACAD FILE: RUSSELL\_9043\_details.dwg  
REVISIONS: Δ XX

ACCEPTED



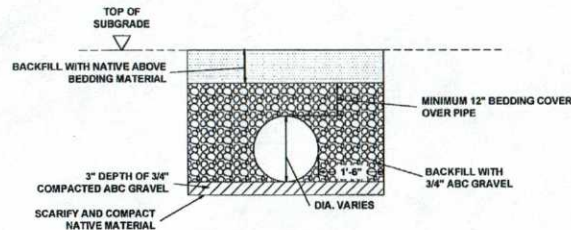
TYPICAL ACCESS ROAD SECTION

NTS



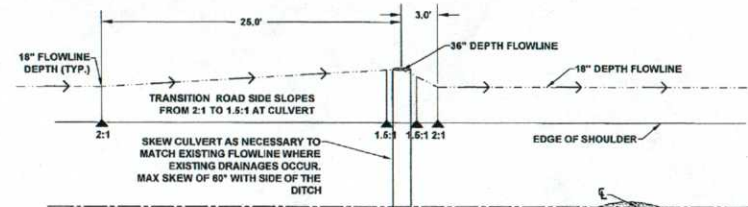
CULVERT INSTALLATION-PROFILE VIEW

NTS



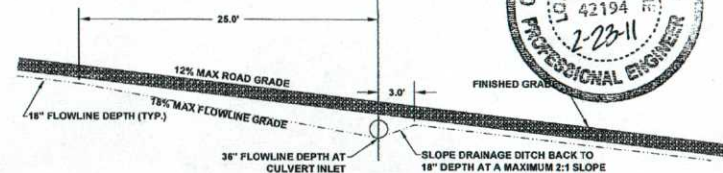
CULVERT BEDDING DETAIL

NTS



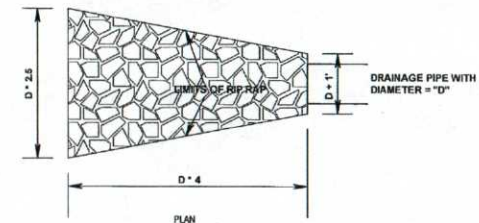
CULVERT INSTALLATION (LOWERED FLOWLINE)

PLAN VIEW



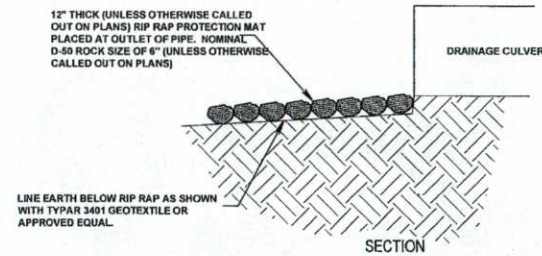
CULVERT INSTALLATION (LOWERED FLOWLINE)

CROSS SECTION VIEW

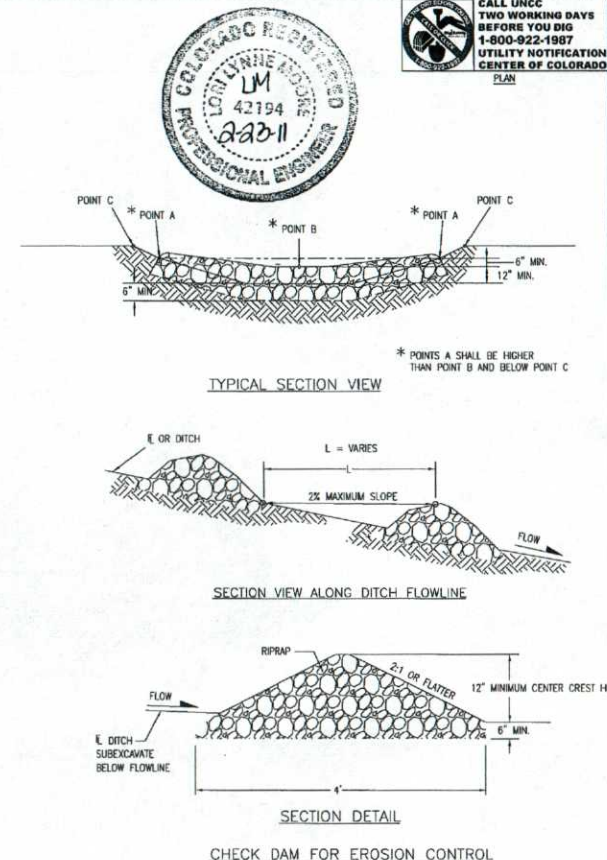
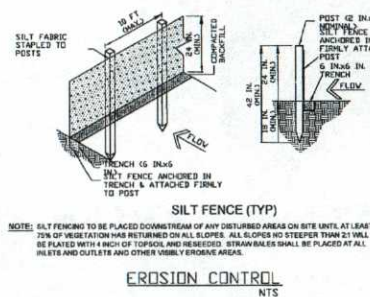
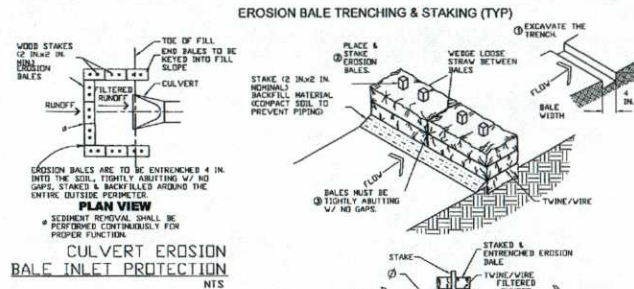
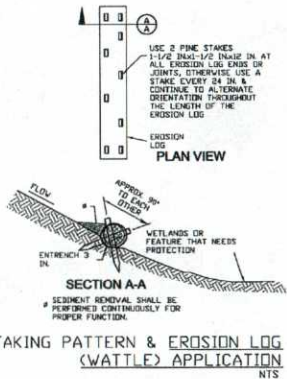
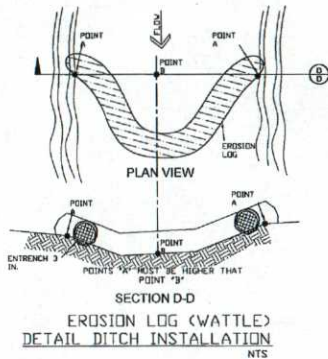


RIPRAP OUTLET DETAIL

NTS



LINE EARTH BELOW RIP RAP AS SHOWN  
WITH TYPAR 3401 GEOTEXTILE OR  
APPROVED EQUAL



- NOTES:
1. RIPRAP SIZE D550 = 6 IN. OR AS SHOWN ON THE PLANS.
  2. THE ENDS OF RIPRAP CHECK DAM SHALL BE A MINIMUM OF 6 IN. HIGHER THAN CENTER OF CHECK DAM.
  3. SEDIMENT SHALL BE REMOVED WHEN THE DEPTH UPSTREAM FROM CHECK DAM IS 1/2 THE CREST HEIGHT.
  4. CHECK DAMS MAY BE TEMPORARY OR PERMANENT AS SHOWN ON THE PLANS.



CALL UNCE  
TWO WORKING DAYS  
BEFORE YOU DIG  
1-800-922-1987  
UTILITY NOTIFICATION  
CENTER OF COLORADO



SHEET  
6 OF 9

Russell Planning & Engineering, Inc.  
904 Main Avenue, Unit C  
Durango, Colorado 81301  
Phone: (970) 386-4546  
Fax: (970) 386-4502

PETROX RESOURCES INC.  
9093 DETAILS

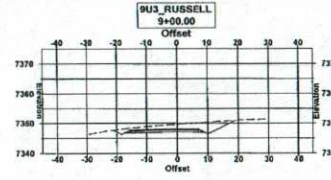
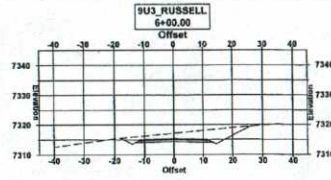
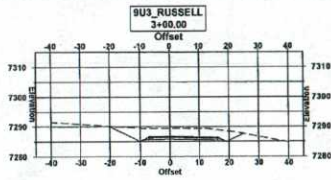
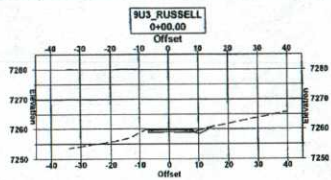
Drawn/Checked:  
Drafted by:  
DATE: 2/23/2011

ACAD FILE: RUSSELL\_9093\_details.dwg

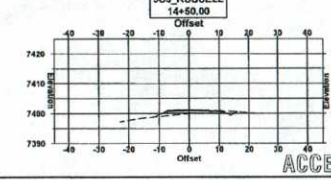
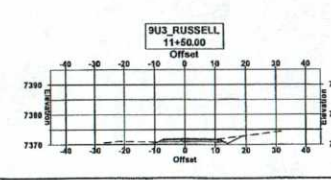
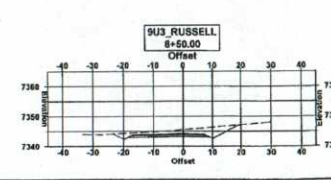
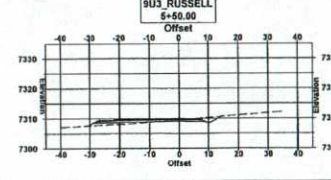
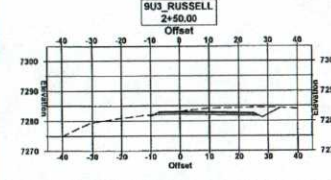
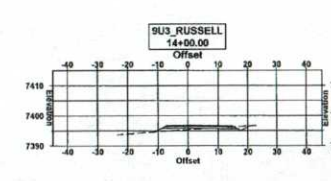
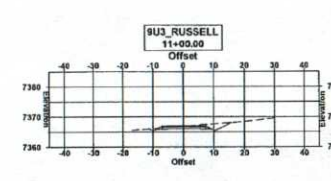
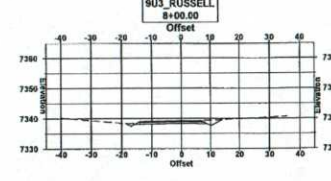
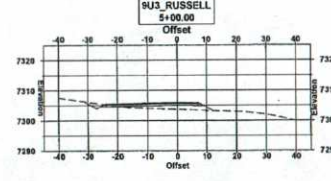
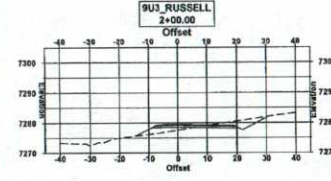
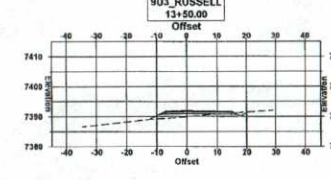
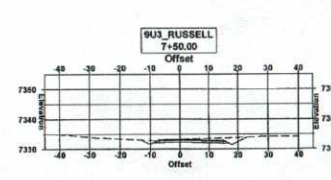
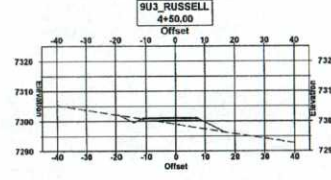
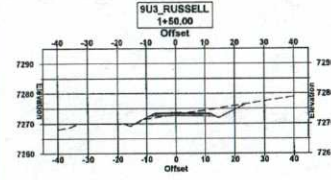
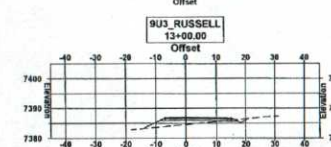
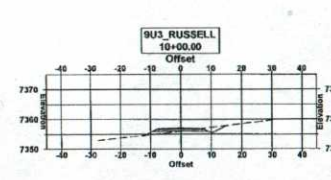
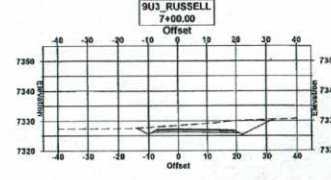
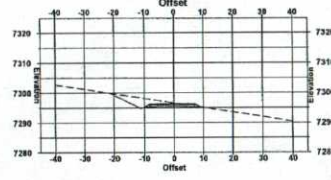
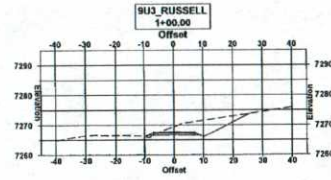
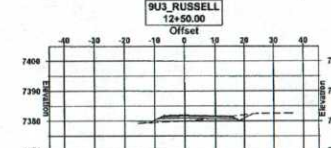
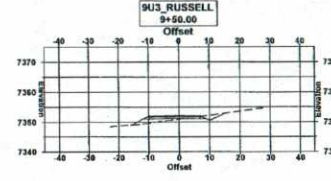
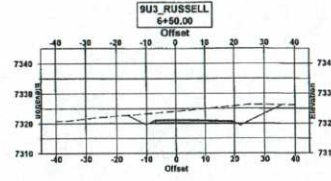
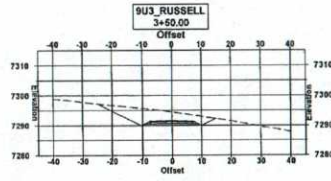
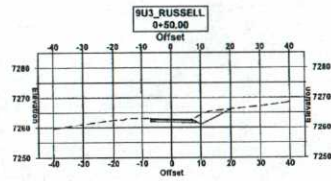
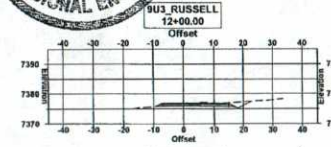
REVISIONS: Δ xx

ACCEPTED





CALL UNCC  
TWO WORKING DAYS  
BEFORE YOU DIG  
1-800-922-1987  
UTILITY NOTIFICATION  
CENTER OF COLORADO  
PLAN  
SCALE: 1" = 40' (11x17)  
SCALE: 1" = 20' (24x36)  
40' 20' 10' 0' 20'



ACCEPTED

**Russell Planning & Engineering, Inc.**  
Civil Engineers  
934 Main Avenue, Unit C  
Durango, Colorado 81301  
Phone: (970) 386-4546  
Fax: (970) 386-4502

**PETROX RESOURCES INC.**  
9U#3 ROAD CROSS SECTIONS

Drawn/Checked:  
Drafted by:  
DATE: 2/23/2011

ACAD FILE: RUSSELL\_9U#3.dwg  
REVISIONS: Δ xx







