

BILL BARRETT CORP

WELD COUNTY, COLORADO

Anschutz Equus Farms 4-62-9-0108CH2

Anschutz Equus Farms 4-62-9-0108CH2

Wellbore #1

Plan: Design #1

Standard Planning Report

22 April, 2013



Bill Barrett Corporation

COMPANY DETAILS: BILL BARRETT CORP

Calculation Method: Minimum Curvature
Error System: ISCWSA
Scan Method: Closest Approach 3D
Error Surface: Elliptical Conic
Warning Method: Error Ratio

REFERENCE INFORMATION

Co-ordinate (N/E) Reference: Well Anschutz Equus Farms 4-62-9-0108CH2, Grid North
Vertical (TVD) Reference: KB @ 4545.0ft (Original Well Elev)
Section (VS) Reference: Slot - (0.0N, 0.0E)
Measured Depth Reference: KB @ 4545.0ft (Original Well Elev)
Calculation Method: Minimum Curvature

WELL DETAILS: Anschutz Equus Farms 4-62-9-0108CH2

+N/-S	+E/-W	Northing	Easting	Latitude	Longitude
0.0	0.0	1365353.61	3323675.65	40° 19' 49.728 N	104° 20' 20.364 W

SECTION DETAILS

Sec	MD	Inc	Azi	TVD	+N/-S	+E/-W	DLeg	TFace	VSec	Target
1	0.0	0.00	0.00	0.0	0.0	0.0	0.00	0.00	0.0	
2	1000.0	0.00	0.00	1000.0	0.0	0.0	0.00	0.00	0.0	
3	1630.6	9.46	341.86	1627.8	49.4	-16.2	1.50	341.86	-11.8	
4	5033.9	9.46	341.86	4984.7	580.9	-190.3	0.00	0.00	-139.3	
5	5412.3	0.00	0.00	5361.4	610.5	-200.0	2.50	180.00	-146.4	
6	5662.3	0.00	0.00	5611.4	610.5	-200.0	0.00	0.00	-146.4	
7	6607.4	90.62	88.66	6209.0	624.6	403.9	9.59	88.66	456.5	4-62-9-0108CH2 LP
8	6608.2	90.62	88.67	6209.0	624.6	404.7	1.50	90.00	457.3	4-62-9-0108CH2 PBHL
9	15848.0	90.62	88.67	6109.0	838.6	9641.5	0.00	0.00	9677.9	4-62-9-0108CH2 PBHL

PROJECT DETAILS: WELD COUNTY, COLORADO

Geodetic System: US State Plane 1983
Datum: North American Datum 1983
Ellipsoid: GRS 1980
Zone: Colorado Northern Zone

FORMATION TOP DETAILS

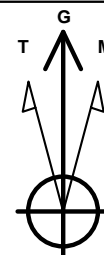
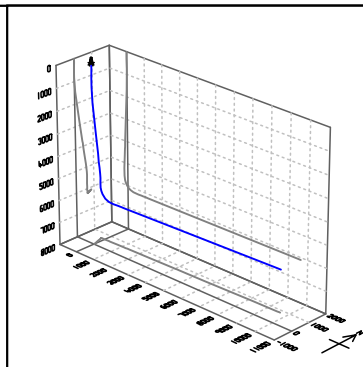
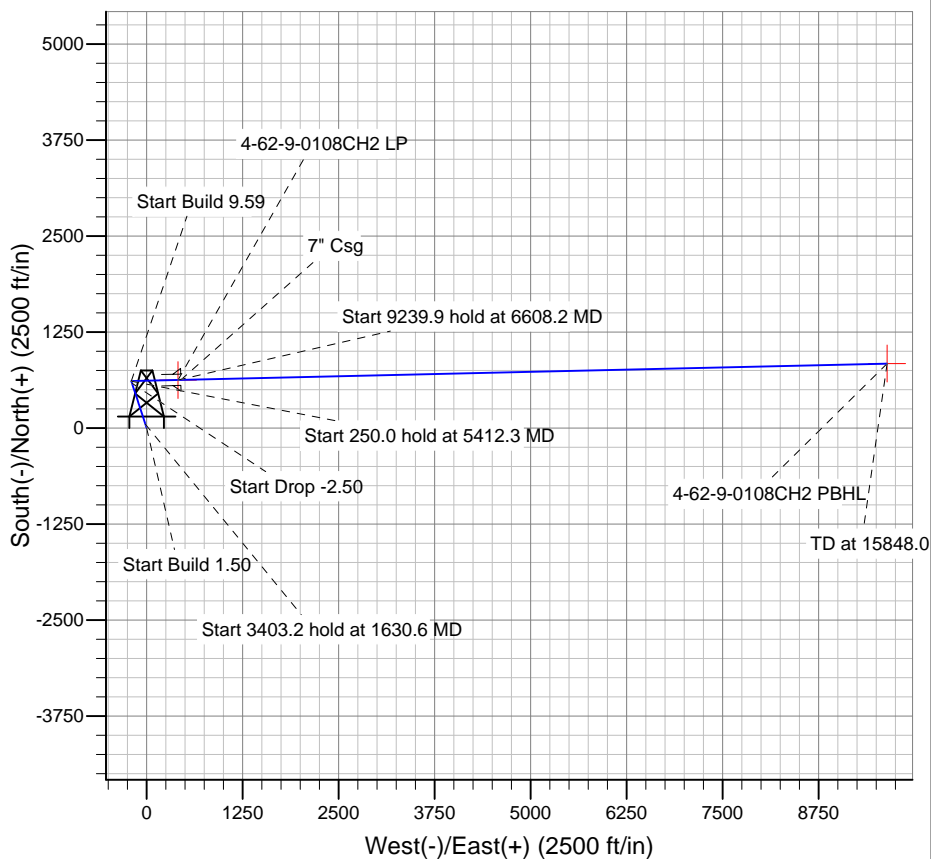
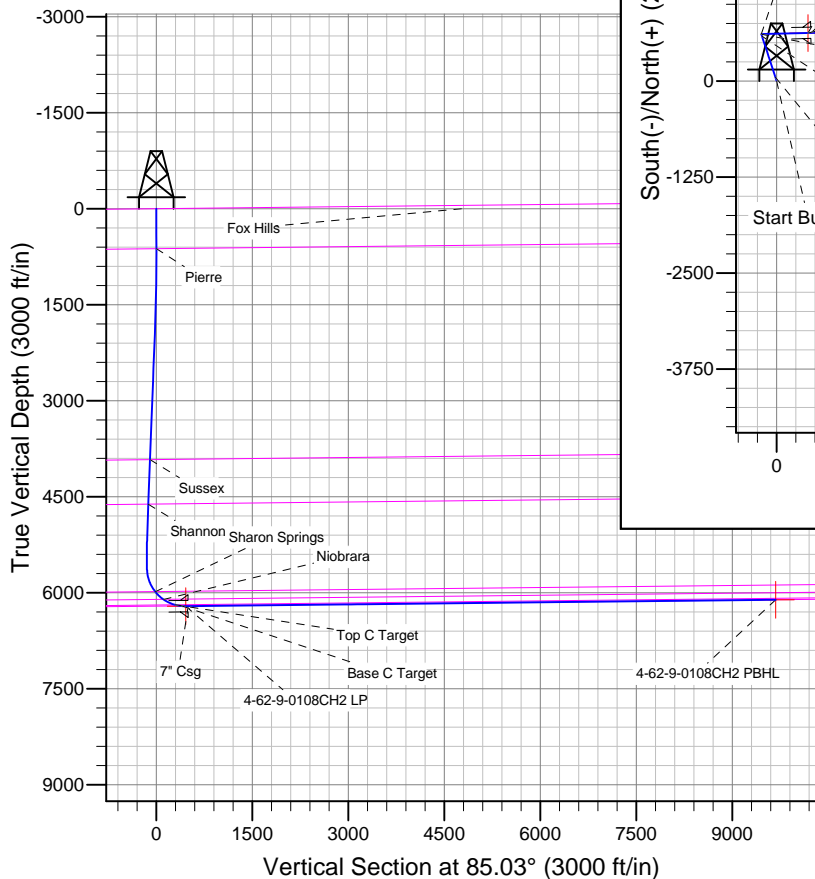
TVDPath	MDPath	Formation
623.0	623.0	Fox Hills
3919.4	3953.8	Sussex
4614.7	4658.8	Shannon
5983.6	6064.1	Sharon Springs
6104.2	6241.7	Niobrara
6188.2	6443.0	Top C Target
6207.1	6552.9	Base C Target

CASING DETAILS

TVD	MD	Name	Size
6208.5	6650.0	7" Csg	7

WELLBORE TARGET DETAILS

Name	TVD	+N/-S	+E/-W	Shape
4-62-9-0108CH2 PBHL	6109.0	838.6	9641.5	Point
4-62-9-0108CH2 LP	6209.0	624.7	407.3	Point



Azimuths to Grid North
True North: -0.75°
Magnetic North: 7.63°

Magnetic Field
Strength: 52949.9snT
Dip Angle: 67.00°
Date: 4/11/2013
Model: IGRF2010

Bill Barrett Corp

Planning Report

Database:	Compass	Local Co-ordinate Reference:	Well Anschutz Equus Farms 4-62-9-0108CH2
Company:	BILL BARRETT CORP	TVD Reference:	KB @ 4545.0ft (Original Well Elev)
Project:	WELD COUNTY, COLORADO	MD Reference:	KB @ 4545.0ft (Original Well Elev)
Site:	Anschutz Equus Farms 4-62-9-0108CH2	North Reference:	Grid
Well:	Anschutz Equus Farms 4-62-9-0108CH2	Survey Calculation Method:	Minimum Curvature
Wellbore:	Wellbore #1		
Design:	Design #1		

Project	WELD COUNTY, COLORADO		
Map System:	US State Plane 1983	System Datum:	Mean Sea Level
Geo Datum:	North American Datum 1983		
Map Zone:	Colorado Northern Zone		

Site		Anschutz Equus Farms 4-62-9-0108CH2				
Site Position:		Northing:	1,365,353.61 ft	Latitude:	40° 19' 49.728 N	
From:	Lat/Long	Easting:	3,323,675.65 ft	Longitude:	104° 20' 20.364 W	
Position Uncertainty:		0.0 ft	Slot Radius:	"	Grid Convergence:	0.75 °

Well	Anschutz Equus Farms 4-62-9-0108CH2					
Well Position	+N-S	0.0 ft	Northing:	1,365,353.61 ft	Latitude:	40° 19' 49.728 N
	+E-W	0.0 ft	Easting:	3,323,675.65 ft	Longitude:	104° 20' 20.364 W
Position Uncertainty		0.0 ft	Wellhead Elevation:	ft	Ground Level:	4,523.0 ft

Wellbore	Wellbore #1				
Magnetics	Model Name	Sample Date	Declination (°)	Dip Angle (°)	Field Strength (nT)
	IGRF2010	4/11/2013	8.38	67.00	52,950

Design	Design #1				
Audit Notes:					
Version:	Phase:	PLAN	Tie On Depth:	0.0	
Vertical Section:	Depth From (TVD) (ft)	+N/-S (ft)	+E/-W (ft)	Direction (°)	
	0.0	0.0	0.0	85.03	

Plan Sections										
Measured Depth (ft)	Inclination (°)	Azimuth (°)	Vertical Depth (ft)	+N/-S (ft)	+E/-W (ft)	Dogleg Rate (°/100ft)	Build Rate (°/100ft)	Turn Rate (°/100ft)	TFO (°)	Target
0.0	0.00	0.00	0.0	0.0	0.0	0.00	0.00	0.00	0.00	
1,000.0	0.00	0.00	1,000.0	0.0	0.0	0.00	0.00	0.00	0.00	
1,630.6	9.46	341.86	1,627.8	49.4	-16.2	1.50	1.50	0.00	341.86	
5,033.9	9.46	341.86	4,984.7	580.9	-190.3	0.00	0.00	0.00	0.00	
5,412.3	0.00	0.00	5,361.4	610.5	-200.0	2.50	-2.50	0.00	180.00	
5,662.3	0.00	0.00	5,611.4	610.5	-200.0	0.00	0.00	0.00	0.00	
6,607.4	90.62	88.66	6,209.0	624.6	403.9	9.59	9.59	0.00	88.66	4-62-9-0108CH2 LF
6,608.2	90.62	88.67	6,209.0	624.6	404.7	1.50	0.00	1.50	90.00	4-62-9-0108CH2 Pf
15,848.0	90.62	88.67	6,109.0	838.6	9,641.5	0.00	0.00	0.00	0.00	4-62-9-0108CH2 Pf

Bill Barrett Corp

Planning Report

Database:	Compass	Local Co-ordinate Reference:	Well Anschutz Equus Farms 4-62-9-0108CH2
Company:	BILL BARRETT CORP	TVD Reference:	KB @ 4545.0ft (Original Well Elev)
Project:	WELD COUNTY, COLORADO	MD Reference:	KB @ 4545.0ft (Original Well Elev)
Site:	Anschutz Equus Farms 4-62-9-0108CH2	North Reference:	Grid
Well:	Anschutz Equus Farms 4-62-9-0108CH2	Survey Calculation Method:	Minimum Curvature
Wellbore:	Wellbore #1		
Design:	Design #1		

Planned Survey									
Measured Depth (ft)	Inclination (°)	Azimuth (°)	Vertical Depth (ft)	+N/-S (ft)	+E/-W (ft)	Vertical Section (ft)	Dogleg Rate (°/100ft)	Build Rate (°/100ft)	Turn Rate (°/100ft)
0.0	0.00	0.00	0.0	0.0	0.0	0.0	0.00	0.00	0.00
100.0	0.00	0.00	100.0	0.0	0.0	0.0	0.00	0.00	0.00
200.0	0.00	0.00	200.0	0.0	0.0	0.0	0.00	0.00	0.00
300.0	0.00	0.00	300.0	0.0	0.0	0.0	0.00	0.00	0.00
400.0	0.00	0.00	400.0	0.0	0.0	0.0	0.00	0.00	0.00
500.0	0.00	0.00	500.0	0.0	0.0	0.0	0.00	0.00	0.00
600.0	0.00	0.00	600.0	0.0	0.0	0.0	0.00	0.00	0.00
623.0	0.00	0.00	623.0	0.0	0.0	0.0	0.00	0.00	0.00
Pierre									
700.0	0.00	0.00	700.0	0.0	0.0	0.0	0.00	0.00	0.00
800.0	0.00	0.00	800.0	0.0	0.0	0.0	0.00	0.00	0.00
900.0	0.00	0.00	900.0	0.0	0.0	0.0	0.00	0.00	0.00
1,000.0	0.00	0.00	1,000.0	0.0	0.0	0.0	0.00	0.00	0.00
1,100.0	1.50	341.86	1,100.0	1.2	-0.4	-0.3	1.50	1.50	0.00
1,200.0	3.00	341.86	1,199.9	5.0	-1.6	-1.2	1.50	1.50	0.00
1,300.0	4.50	341.86	1,299.7	11.2	-3.7	-2.7	1.50	1.50	0.00
1,400.0	6.00	341.86	1,399.3	19.9	-6.5	-4.8	1.50	1.50	0.00
1,500.0	7.50	341.86	1,498.6	31.1	-10.2	-7.4	1.50	1.50	0.00
1,600.0	9.00	341.86	1,597.5	44.7	-14.6	-10.7	1.50	1.50	0.00
1,630.6	9.46	341.86	1,627.8	49.4	-16.2	-11.8	1.50	1.50	0.00
1,700.0	9.46	341.86	1,696.2	60.2	-19.7	-14.4	0.00	0.00	0.00
1,800.0	9.46	341.86	1,794.8	75.8	-24.8	-18.2	0.00	0.00	0.00
1,900.0	9.46	341.86	1,893.5	91.4	-30.0	-21.9	0.00	0.00	0.00
2,000.0	9.46	341.86	1,992.1	107.0	-35.1	-25.7	0.00	0.00	0.00
2,100.0	9.46	341.86	2,090.8	122.7	-40.2	-29.4	0.00	0.00	0.00
2,200.0	9.46	341.86	2,189.4	138.3	-45.3	-33.1	0.00	0.00	0.00
2,300.0	9.46	341.86	2,288.0	153.9	-50.4	-36.9	0.00	0.00	0.00
2,400.0	9.46	341.86	2,386.7	169.5	-55.5	-40.6	0.00	0.00	0.00
2,500.0	9.46	341.86	2,485.3	185.1	-60.7	-44.4	0.00	0.00	0.00
2,600.0	9.46	341.86	2,584.0	200.8	-65.8	-48.1	0.00	0.00	0.00
2,700.0	9.46	341.86	2,682.6	216.4	-70.9	-51.9	0.00	0.00	0.00
2,800.0	9.46	341.86	2,781.2	232.0	-76.0	-55.6	0.00	0.00	0.00
2,900.0	9.46	341.86	2,879.9	247.6	-81.1	-59.4	0.00	0.00	0.00
3,000.0	9.46	341.86	2,978.5	263.2	-86.2	-63.1	0.00	0.00	0.00
3,100.0	9.46	341.86	3,077.2	278.8	-91.4	-66.8	0.00	0.00	0.00
3,200.0	9.46	341.86	3,175.8	294.5	-96.5	-70.6	0.00	0.00	0.00
3,300.0	9.46	341.86	3,274.4	310.1	-101.6	-74.3	0.00	0.00	0.00
3,400.0	9.46	341.86	3,373.1	325.7	-106.7	-78.1	0.00	0.00	0.00
3,500.0	9.46	341.86	3,471.7	341.3	-111.8	-81.8	0.00	0.00	0.00
3,600.0	9.46	341.86	3,570.4	356.9	-116.9	-85.6	0.00	0.00	0.00
3,700.0	9.46	341.86	3,669.0	372.6	-122.0	-89.3	0.00	0.00	0.00
3,800.0	9.46	341.86	3,767.6	388.2	-127.2	-93.1	0.00	0.00	0.00
3,900.0	9.46	341.86	3,866.3	403.8	-132.3	-96.8	0.00	0.00	0.00
3,953.8	9.46	341.86	3,919.4	412.2	-135.0	-98.8	0.00	0.00	0.00
Sussex									
4,000.0	9.46	341.86	3,964.9	419.4	-137.4	-100.5	0.00	0.00	0.00
4,100.0	9.46	341.86	4,063.6	435.0	-142.5	-104.3	0.00	0.00	0.00
4,200.0	9.46	341.86	4,162.2	450.6	-147.6	-108.0	0.00	0.00	0.00
4,300.0	9.46	341.86	4,260.8	466.3	-152.7	-111.8	0.00	0.00	0.00
4,400.0	9.46	341.86	4,359.5	481.9	-157.9	-115.5	0.00	0.00	0.00
4,500.0	9.46	341.86	4,458.1	497.5	-163.0	-119.3	0.00	0.00	0.00
4,600.0	9.46	341.86	4,556.8	513.1	-168.1	-123.0	0.00	0.00	0.00
4,658.8	9.46	341.86	4,614.7	522.3	-171.1	-125.2	0.00	0.00	0.00

Bill Barrett Corp

Planning Report

Database:	Compass	Local Co-ordinate Reference:	Well Anschutz Equus Farms 4-62-9-0108CH2
Company:	BILL BARRETT CORP	TVD Reference:	KB @ 4545.0ft (Original Well Elev)
Project:	WELD COUNTY, COLORADO	MD Reference:	KB @ 4545.0ft (Original Well Elev)
Site:	Anschutz Equus Farms 4-62-9-0108CH2	North Reference:	Grid
Well:	Anschutz Equus Farms 4-62-9-0108CH2	Survey Calculation Method:	Minimum Curvature
Wellbore:	Wellbore #1		
Design:	Design #1		

Planned Survey									
Measured Depth (ft)	Inclination (°)	Azimuth (°)	Vertical Depth (ft)	+N/-S (ft)	+E/-W (ft)	Vertical Section (ft)	Dogleg Rate (°/100ft)	Build Rate (°/100ft)	Turn Rate (°/100ft)
Shannon									
4,700.0	9.46	341.86	4,655.4	528.7	-173.2	-126.8	0.00	0.00	0.00
4,800.0	9.46	341.86	4,754.0	544.4	-178.3	-130.5	0.00	0.00	0.00
4,900.0	9.46	341.86	4,852.7	560.0	-183.4	-134.2	0.00	0.00	0.00
5,000.0	9.46	341.86	4,951.3	575.6	-188.6	-138.0	0.00	0.00	0.00
5,033.9	9.46	341.86	4,984.7	580.9	-190.3	-139.3	0.00	0.00	0.00
5,100.0	7.81	341.86	5,050.1	590.3	-193.4	-141.5	2.50	-2.50	0.00
5,200.0	5.31	341.86	5,149.4	601.2	-196.9	-144.1	2.50	-2.50	0.00
5,300.0	2.81	341.86	5,249.2	607.9	-199.1	-145.7	2.50	-2.50	0.00
5,400.0	0.31	341.86	5,349.1	610.5	-200.0	-146.3	2.50	-2.50	0.00
5,412.3	0.00	0.00	5,361.4	610.5	-200.0	-146.4	2.50	-2.50	0.00
5,500.0	0.00	0.00	5,449.1	610.5	-200.0	-146.4	0.00	0.00	0.00
5,600.0	0.00	0.00	5,549.1	610.5	-200.0	-146.4	0.00	0.00	0.00
5,662.3	0.00	0.00	5,611.4	610.5	-200.0	-146.4	0.00	0.00	0.00
5,700.0	3.62	88.66	5,649.1	610.5	-198.8	-145.2	9.59	9.59	0.00
5,800.0	13.21	88.66	5,747.9	610.9	-184.2	-130.6	9.59	9.59	0.00
5,900.0	22.79	88.66	5,842.9	611.6	-153.3	-99.8	9.59	9.59	0.00
6,000.0	32.38	88.66	5,931.5	612.7	-107.1	-53.6	9.59	9.59	0.00
6,064.1	38.52	88.66	5,983.6	613.5	-70.0	-16.5	9.59	9.59	0.00
Sharon Springs									
6,100.0	41.97	88.66	6,011.0	614.1	-46.8	6.6	9.59	9.59	0.00
6,200.0	51.56	88.66	6,079.5	615.8	26.0	79.2	9.59	9.59	0.00
6,241.7	55.55	88.66	6,104.2	616.6	59.5	112.7	9.59	9.59	0.00
Niobrara									
6,300.0	61.15	88.66	6,134.8	617.7	109.1	162.2	9.59	9.59	0.00
6,400.0	70.73	88.66	6,175.5	619.9	200.3	253.3	9.59	9.59	0.00
6,443.0	74.85	88.66	6,188.2	620.8	241.3	294.2	9.59	9.59	0.00
Top C Target									
6,500.0	80.32	88.66	6,200.5	622.1	297.0	349.8	9.59	9.59	0.00
6,552.9	85.39	88.66	6,207.1	623.3	349.4	402.1	9.59	9.59	0.00
Base C Target									
6,600.0	89.91	88.66	6,209.0	624.4	396.5	449.1	9.59	9.59	0.00
6,607.4	90.62	88.66	6,209.0	624.6	403.9	456.5	9.59	9.59	0.00
6,608.2	90.62	88.67	6,209.0	624.6	404.7	457.3	1.50	0.00	1.50
6,610.8	90.62	88.67	6,208.9	624.7	407.3	459.8	0.00	0.00	0.00
4-62-9-0108CH2 LP									
6,650.0	90.62	88.67	6,208.5	625.6	446.5	499.0	0.00	0.00	0.00
7" Csg									
6,700.0	90.62	88.67	6,208.0	626.8	496.4	548.9	0.00	0.00	0.00
6,800.0	90.62	88.67	6,206.9	629.1	596.4	648.7	0.00	0.00	0.00
6,900.0	90.62	88.67	6,205.8	631.4	696.4	748.5	0.00	0.00	0.00
7,000.0	90.62	88.67	6,204.7	633.7	796.3	848.3	0.00	0.00	0.00
7,100.0	90.62	88.67	6,203.6	636.0	896.3	948.1	0.00	0.00	0.00
7,200.0	90.62	88.67	6,202.5	638.3	996.3	1,047.8	0.00	0.00	0.00
7,300.0	90.62	88.67	6,201.5	640.6	1,096.2	1,147.6	0.00	0.00	0.00
7,400.0	90.62	88.67	6,200.4	643.0	1,196.2	1,247.4	0.00	0.00	0.00
7,500.0	90.62	88.67	6,199.3	645.3	1,296.2	1,347.2	0.00	0.00	0.00
7,600.0	90.62	88.67	6,198.2	647.6	1,396.2	1,447.0	0.00	0.00	0.00
7,700.0	90.62	88.67	6,197.1	649.9	1,496.1	1,546.8	0.00	0.00	0.00
7,800.0	90.62	88.67	6,196.1	652.2	1,596.1	1,646.6	0.00	0.00	0.00
7,900.0	90.62	88.67	6,195.0	654.5	1,696.1	1,746.4	0.00	0.00	0.00
8,000.0	90.62	88.67	6,193.9	656.9	1,796.0	1,846.2	0.00	0.00	0.00
8,100.0	90.62	88.67	6,192.8	659.2	1,896.0	1,946.0	0.00	0.00	0.00

Bill Barrett Corp

Planning Report

Database:	Compass	Local Co-ordinate Reference:	Well Anschutz Equus Farms 4-62-9-0108CH2
Company:	BILL BARRETT CORP	TVD Reference:	KB @ 4545.0ft (Original Well Elev)
Project:	WELD COUNTY, COLORADO	MD Reference:	KB @ 4545.0ft (Original Well Elev)
Site:	Anschutz Equus Farms 4-62-9-0108CH2	North Reference:	Grid
Well:	Anschutz Equus Farms 4-62-9-0108CH2	Survey Calculation Method:	Minimum Curvature
Wellbore:	Wellbore #1		
Design:	Design #1		

Planned Survey									
Measured Depth (ft)	Inclination (°)	Azimuth (°)	Vertical Depth (ft)	+N/-S (ft)	+E/-W (ft)	Vertical Section (ft)	Dogleg Rate (°/100ft)	Build Rate (°/100ft)	Turn Rate (°/100ft)
8,200.0	90.62	88.67	6,191.7	661.5	1,996.0	2,045.8	0.00	0.00	0.00
8,300.0	90.62	88.67	6,190.6	663.8	2,095.9	2,145.6	0.00	0.00	0.00
8,400.0	90.62	88.67	6,189.6	666.1	2,195.9	2,245.3	0.00	0.00	0.00
8,500.0	90.62	88.67	6,188.5	668.4	2,295.9	2,345.1	0.00	0.00	0.00
8,600.0	90.62	88.67	6,187.4	670.7	2,395.8	2,444.9	0.00	0.00	0.00
8,700.0	90.62	88.67	6,186.3	673.1	2,495.8	2,544.7	0.00	0.00	0.00
8,800.0	90.62	88.67	6,185.2	675.4	2,595.8	2,644.5	0.00	0.00	0.00
8,900.0	90.62	88.67	6,184.2	677.7	2,695.7	2,744.3	0.00	0.00	0.00
9,000.0	90.62	88.67	6,183.1	680.0	2,795.7	2,844.1	0.00	0.00	0.00
9,100.0	90.62	88.67	6,182.0	682.3	2,895.7	2,943.9	0.00	0.00	0.00
9,200.0	90.62	88.67	6,180.9	684.6	2,995.6	3,043.7	0.00	0.00	0.00
9,300.0	90.62	88.67	6,179.8	686.9	3,095.6	3,143.5	0.00	0.00	0.00
9,400.0	90.62	88.67	6,178.7	689.3	3,195.6	3,243.3	0.00	0.00	0.00
9,500.0	90.62	88.67	6,177.7	691.6	3,295.5	3,343.1	0.00	0.00	0.00
9,600.0	90.62	88.67	6,176.6	693.9	3,395.5	3,442.9	0.00	0.00	0.00
9,700.0	90.62	88.67	6,175.5	696.2	3,495.5	3,542.6	0.00	0.00	0.00
9,800.0	90.62	88.67	6,174.4	698.5	3,595.4	3,642.4	0.00	0.00	0.00
9,900.0	90.62	88.67	6,173.3	700.8	3,695.4	3,742.2	0.00	0.00	0.00
10,000.0	90.62	88.67	6,172.2	703.2	3,795.4	3,842.0	0.00	0.00	0.00
10,100.0	90.62	88.67	6,171.2	705.5	3,895.3	3,941.8	0.00	0.00	0.00
10,200.0	90.62	88.67	6,170.1	707.8	3,995.3	4,041.6	0.00	0.00	0.00
10,300.0	90.62	88.67	6,169.0	710.1	4,095.3	4,141.4	0.00	0.00	0.00
10,400.0	90.62	88.67	6,167.9	712.4	4,195.2	4,241.2	0.00	0.00	0.00
10,500.0	90.62	88.67	6,166.8	714.7	4,295.2	4,341.0	0.00	0.00	0.00
10,600.0	90.62	88.67	6,165.8	717.0	4,395.2	4,440.8	0.00	0.00	0.00
10,700.0	90.62	88.67	6,164.7	719.4	4,495.1	4,540.6	0.00	0.00	0.00
10,800.0	90.62	88.67	6,163.6	721.7	4,595.1	4,640.4	0.00	0.00	0.00
10,900.0	90.62	88.67	6,162.5	724.0	4,695.1	4,740.1	0.00	0.00	0.00
11,000.0	90.62	88.67	6,161.4	726.3	4,795.0	4,839.9	0.00	0.00	0.00
11,100.0	90.62	88.67	6,160.3	728.6	4,895.0	4,939.7	0.00	0.00	0.00
11,200.0	90.62	88.67	6,159.3	730.9	4,995.0	5,039.5	0.00	0.00	0.00
11,300.0	90.62	88.67	6,158.2	733.3	5,094.9	5,139.3	0.00	0.00	0.00
11,400.0	90.62	88.67	6,157.1	735.6	5,194.9	5,239.1	0.00	0.00	0.00
11,500.0	90.62	88.67	6,156.0	737.9	5,294.9	5,338.9	0.00	0.00	0.00
11,600.0	90.62	88.67	6,154.9	740.2	5,394.8	5,438.7	0.00	0.00	0.00
11,700.0	90.62	88.67	6,153.9	742.5	5,494.8	5,538.5	0.00	0.00	0.00
11,800.0	90.62	88.67	6,152.8	744.8	5,594.8	5,638.3	0.00	0.00	0.00
11,900.0	90.62	88.67	6,151.7	747.1	5,694.7	5,738.1	0.00	0.00	0.00
12,000.0	90.62	88.67	6,150.6	749.5	5,794.7	5,837.9	0.00	0.00	0.00
12,100.0	90.62	88.67	6,149.5	751.8	5,894.7	5,937.7	0.00	0.00	0.00
12,200.0	90.62	88.67	6,148.4	754.1	5,994.6	6,037.4	0.00	0.00	0.00
12,300.0	90.62	88.67	6,147.4	756.4	6,094.6	6,137.2	0.00	0.00	0.00
12,400.0	90.62	88.67	6,146.3	758.7	6,194.6	6,237.0	0.00	0.00	0.00
12,500.0	90.62	88.67	6,145.2	761.0	6,294.6	6,336.8	0.00	0.00	0.00
12,600.0	90.62	88.67	6,144.1	763.4	6,394.5	6,436.6	0.00	0.00	0.00
12,700.0	90.62	88.67	6,143.0	765.7	6,494.5	6,536.4	0.00	0.00	0.00
12,800.0	90.62	88.67	6,142.0	768.0	6,594.5	6,636.2	0.00	0.00	0.00
12,900.0	90.62	88.67	6,140.9	770.3	6,694.4	6,736.0	0.00	0.00	0.00
13,000.0	90.62	88.67	6,139.8	772.6	6,794.4	6,835.8	0.00	0.00	0.00
13,100.0	90.62	88.67	6,138.7	774.9	6,894.4	6,935.6	0.00	0.00	0.00
13,200.0	90.62	88.67	6,137.6	777.2	6,994.3	7,035.4	0.00	0.00	0.00
13,300.0	90.62	88.67	6,136.5	779.6	7,094.3	7,135.2	0.00	0.00	0.00
13,400.0	90.62	88.67	6,135.5	781.9	7,194.3	7,234.9	0.00	0.00	0.00
13,500.0	90.62	88.67	6,134.4	784.2	7,294.2	7,334.7	0.00	0.00	0.00

Bill Barrett Corp

Planning Report

Database:	Compass	Local Co-ordinate Reference:	Well Anschutz Equus Farms 4-62-9-0108CH2
Company:	BILL BARRETT CORP	TVD Reference:	KB @ 4545.0ft (Original Well Elev)
Project:	WELD COUNTY, COLORADO	MD Reference:	KB @ 4545.0ft (Original Well Elev)
Site:	Anschutz Equus Farms 4-62-9-0108CH2	North Reference:	Grid
Well:	Anschutz Equus Farms 4-62-9-0108CH2	Survey Calculation Method:	Minimum Curvature
Wellbore:	Wellbore #1		
Design:	Design #1		

Planned Survey

Measured Depth (ft)	Inclination (°)	Azimuth (°)	Vertical Depth (ft)	+N/-S (ft)	+E/-W (ft)	Vertical Section (ft)	Dogleg Rate (°/100ft)	Build Rate (°/100ft)	Turn Rate (°/100ft)
13,600.0	90.62	88.67	6,133.3	786.5	7,394.2	7,434.5	0.00	0.00	0.00
13,700.0	90.62	88.67	6,132.2	788.8	7,494.2	7,534.3	0.00	0.00	0.00
13,800.0	90.62	88.67	6,131.1	791.1	7,594.1	7,634.1	0.00	0.00	0.00
13,900.0	90.62	88.67	6,130.0	793.5	7,694.1	7,733.9	0.00	0.00	0.00
14,000.0	90.62	88.67	6,129.0	795.8	7,794.1	7,833.7	0.00	0.00	0.00
14,100.0	90.62	88.67	6,127.9	798.1	7,894.0	7,933.5	0.00	0.00	0.00
14,200.0	90.62	88.67	6,126.8	800.4	7,994.0	8,033.3	0.00	0.00	0.00
14,300.0	90.62	88.67	6,125.7	802.7	8,094.0	8,133.1	0.00	0.00	0.00
14,400.0	90.62	88.67	6,124.6	805.0	8,193.9	8,232.9	0.00	0.00	0.00
14,500.0	90.62	88.67	6,123.6	807.3	8,293.9	8,332.7	0.00	0.00	0.00
14,600.0	90.62	88.67	6,122.5	809.7	8,393.9	8,432.5	0.00	0.00	0.00
14,700.0	90.62	88.67	6,121.4	812.0	8,493.8	8,532.2	0.00	0.00	0.00
14,800.0	90.62	88.67	6,120.3	814.3	8,593.8	8,632.0	0.00	0.00	0.00
14,900.0	90.62	88.67	6,119.2	816.6	8,693.8	8,731.8	0.00	0.00	0.00
15,000.0	90.62	88.67	6,118.1	818.9	8,793.7	8,831.6	0.00	0.00	0.00
15,100.0	90.62	88.67	6,117.1	821.2	8,893.7	8,931.4	0.00	0.00	0.00
15,200.0	90.62	88.67	6,116.0	823.6	8,993.7	9,031.2	0.00	0.00	0.00
15,300.0	90.62	88.67	6,114.9	825.9	9,093.6	9,131.0	0.00	0.00	0.00
15,400.0	90.62	88.67	6,113.8	828.2	9,193.6	9,230.8	0.00	0.00	0.00
15,500.0	90.62	88.67	6,112.7	830.5	9,293.6	9,330.6	0.00	0.00	0.00
15,600.0	90.62	88.67	6,111.7	832.8	9,393.5	9,430.4	0.00	0.00	0.00
15,700.0	90.62	88.67	6,110.6	835.1	9,493.5	9,530.2	0.00	0.00	0.00
15,800.0	90.62	88.67	6,109.5	837.4	9,593.5	9,630.0	0.00	0.00	0.00
15,848.0	90.62	88.67	6,109.0	838.6	9,641.5	9,677.9	0.00	0.00	0.00

4-62-9-0108CH2 PBHL

Casing Points

Measured Depth (ft)	Vertical Depth (ft)	Name	Casing Diameter (")	Hole Diameter (")
6,650.0	6,208.5	7" Csg	7	8-3/4

Formations

Measured Depth (ft)	Vertical Depth (ft)	Name	Lithology	Dip (°)	Dip Direction (°)
	0.0	Fox Hills		-0.62	88.67
623.0	623.0	Pierre		-0.62	88.67
3,953.8	3,918.0	Sussex		-0.62	88.67
4,658.8	4,613.0	Shannon		-0.62	88.67
6,064.1	5,983.0	Sharon Springs		-0.62	88.67
6,241.7	6,105.0	Niobrara		-0.62	88.67
6,443.0	6,191.0	Top C Target		-0.62	88.67
6,552.9	6,211.0	Base C Target		-0.62	88.67