



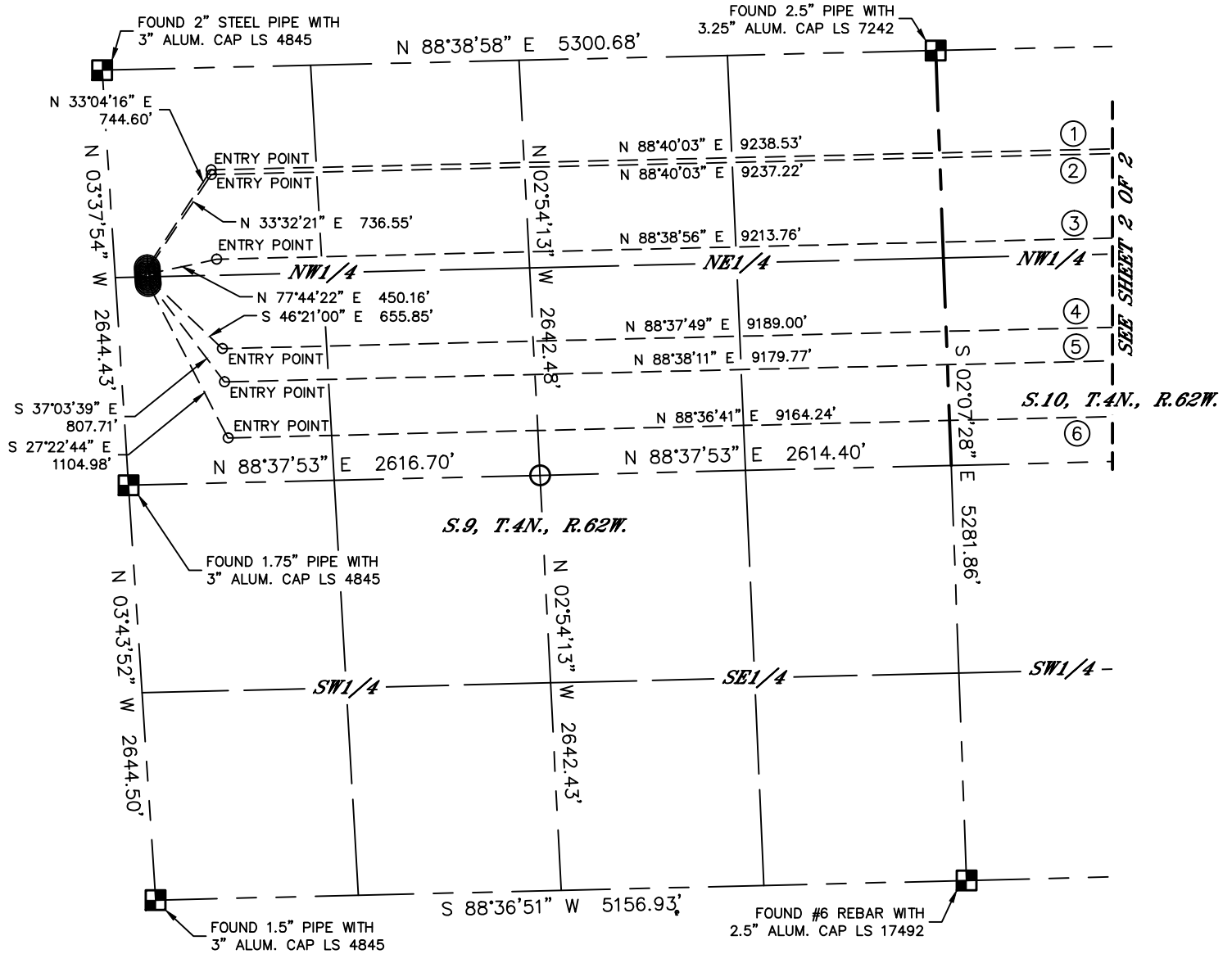
Lat40°, Inc. 1635 Foxtrail Drive, Suite 325 Loveland, CO 970-776-3321

MULTI-WELL PLAN

ANSCHUTZ EQUUS FARMS-04-62-09 PAD

THIS MAP DOES NOT REPRESENT A BOUNDARY SURVEY

SECTION: 9
TOWNSHIP: 4N
RANGE: 62W



①

-BOTTOM HOLE-
ANSCHUTZ EQUUS FARMS
4-62-9-0108CH2
650' FNL
650' FEL
LAT: 40.33243°N
LONG: 104.30437°W

②

-BOTTOM HOLE-
ANSCHUTZ EQUUS
FARMS-04-62-09-0108CDH2
680' FNL
650' FEL
LAT: 40.33235°N
LONG: 104.30437°W

③

-BOTTOM HOLE-
ANSCHUTZ EQUUS FARMS
4-62-9-1609BH2
1216' FNL
650' FEL
LAT: 40.33088°N
LONG: 104.30436°W

④

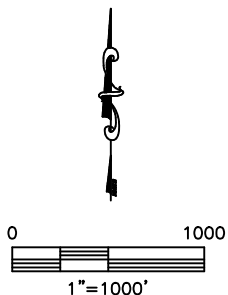
-BOTTOM HOLE-
ANSCHUTZ EQUUS FARMS
4-62-9-1724CH2
1782' FNL
650' FEL
LAT: 40.32932°N
LONG: 104.30435°W

⑤

-BOTTOM HOLE-
ANSCHUTZ EQUUS
FARMS-04-62-09-3225CDH2
1995' FNL
650' FEL
LAT: 40.32874°N
LONG: 104.30434°W

⑥

-BOTTOM HOLE-
ANSCHUTZ EQUUS FARMS
4-62-9-3225BH2
2348' FNL
650' FEL
LAT: 40.32777°N
LONG: 104.30433°W



SHEET 1 OF 2

DATE: rev.4/25/2013
PROJECT#: 2013006



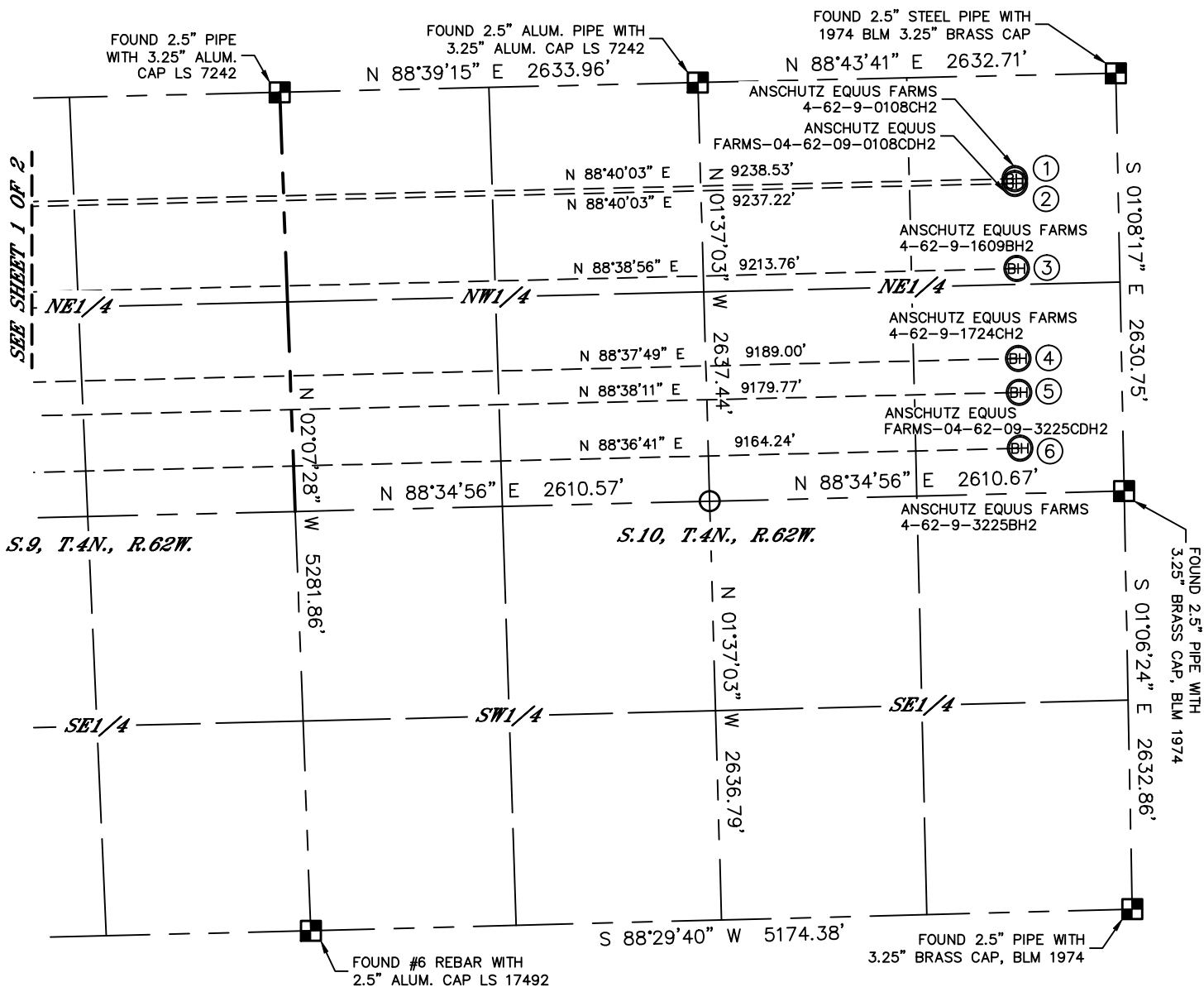
Lat40°, Inc. 1635 Foxtrail Drive, Suite 325 Loveland, CO 970-776-3321

MULTI-WELL PLAN

ANSCHUTZ EQUUS FARMS-04-62-09 PAD

THIS MAP DOES NOT REPRESENT A BOUNDARY SURVEY

SECTION: 9
TOWNSHIP: 4N
RANGE: 62W



①

-BOTTOM HOLE-
ANSCHUTZ EQUUS FARMS
4-62-9-0108CH2
650' FNL
650' FEL
LAT: 40.33243°N
LONG: 104.30437°W

②

-BOTTOM HOLE-
ANSCHUTZ EQUUS
FARMS-04-62-09-0108CDH2
680' FNL
650' FEL
LAT: 40.33235°N
LONG: 104.30437°W

③

-BOTTOM HOLE-
ANSCHUTZ EQUUS FARMS
4-62-9-1609BH2
1216' FNL
650' FEL
LAT: 40.33088°N
LONG: 104.30436°W

④

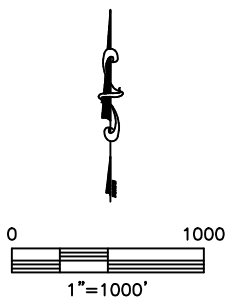
-BOTTOM HOLE-
ANSCHUTZ EQUUS FARMS
4-62-9-1724CH2
1782' FNL
650' FEL
LAT: 40.32932°N
LONG: 104.30435°W

⑤

-BOTTOM HOLE-
ANSCHUTZ EQUUS
FARMS-04-62-09-3225CDH2
1995' FNL
650' FEL
LAT: 40.32874°N
LONG: 104.30434°W

⑥

-BOTTOM HOLE-
ANSCHUTZ EQUUS FARMS
4-62-9-3225BH2
2348' FNL
650' FEL
LAT: 40.32777°N
LONG: 104.30433°W



SHEET 2 OF 2

DATE: rev.4/25/2013
PROJECT#: 2013006

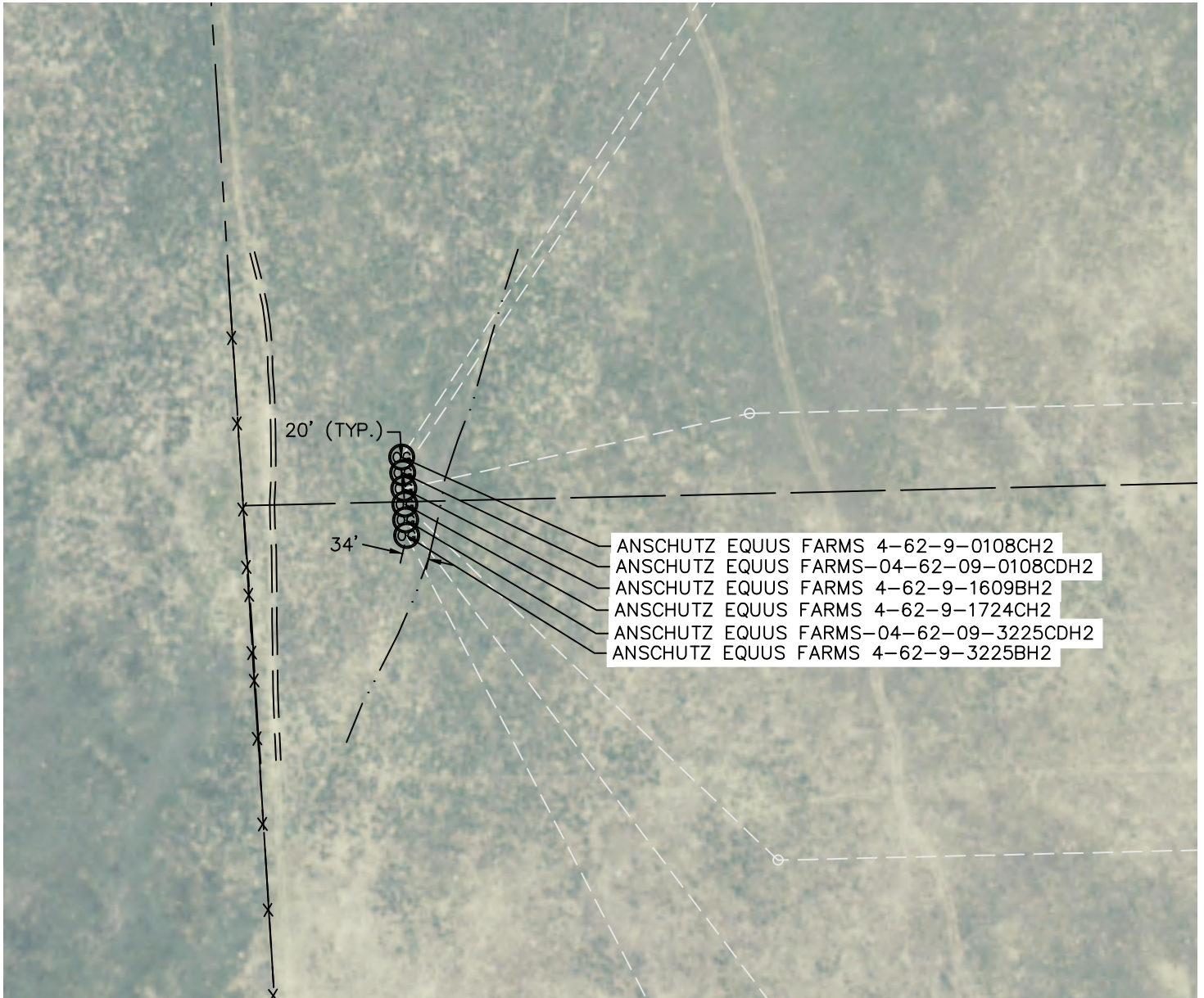


Lat40°, Inc. 1635 Foxtrail Drive, Suite 325 Loveland, CO 970-776-3321

MULTI-WELL PLAN

ANSCHUTZ EQUUS FARMS-04-62-09 PAD

SECTION: 9
TOWNSHIP: 4N
RANGE: 62W



0 200
1"=200'

DATE: 3/28/2013
PROJECT#: 2013006