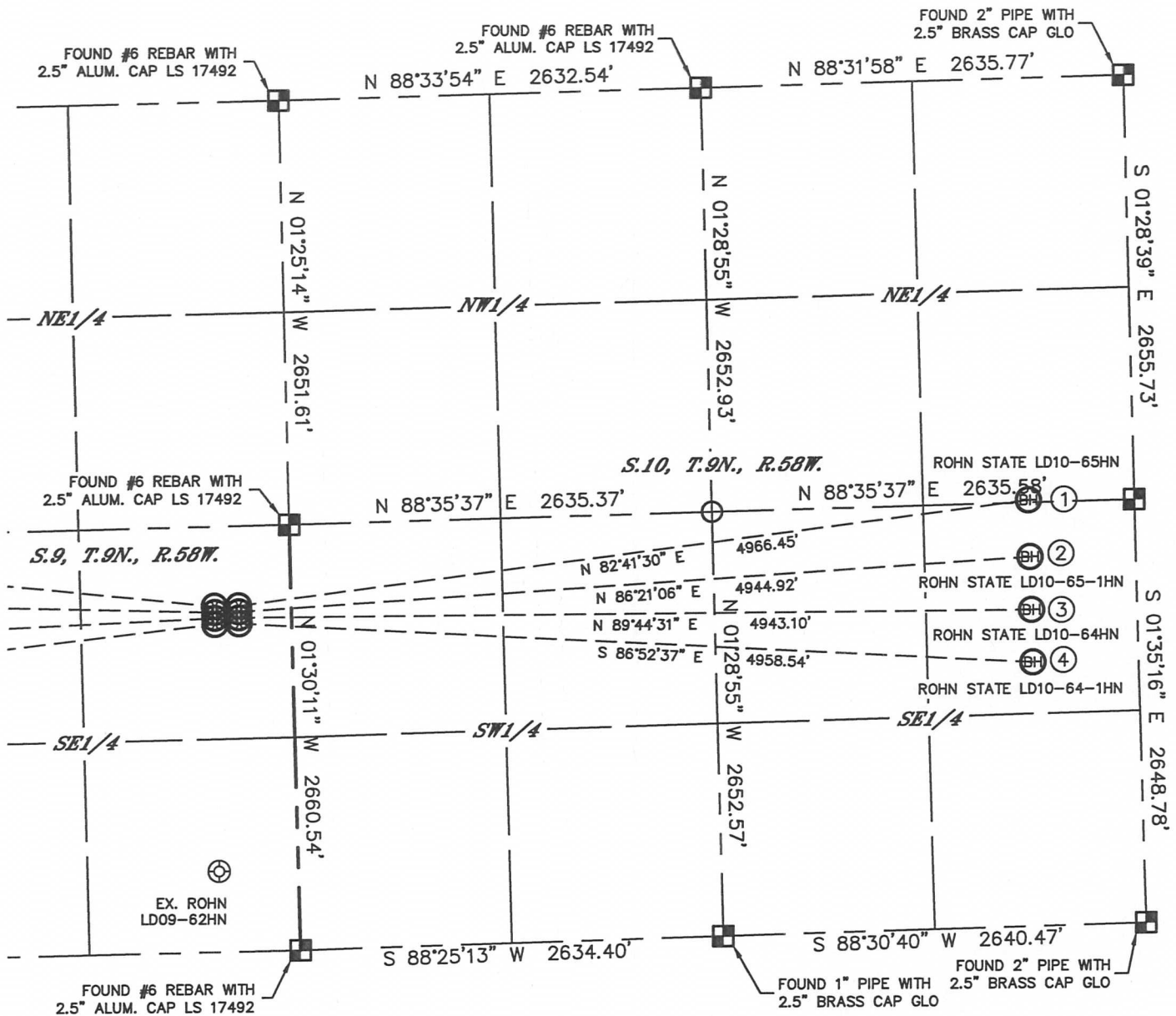


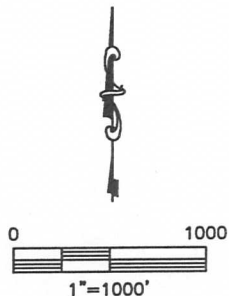
# MULTI-WELL PLAN

ROHN STATE LD10-65HN PAD,  
ROHN STATE LD09-65HN PAD  
THIS MAP DOES NOT REPRESENT A BOUNDARY SURVEY

SECTION: 9  
TOWNSHIP: 9N  
RANGE: 58W



- |   |   |   |   |
|---|---|---|---|
| ①<br>-BOTTOM HOLE-<br>ROHN STATE LD10-65HN<br>2640' FNL<br>660' FEL<br>LAT: 40.76600°N<br>LONG: 103.84329°W | ②<br>-BOTTOM HOLE-<br>ROHN STATE LD10-65-1HN<br>2310' FSL<br>660' FEL<br>LAT: 40.76502°N<br>LONG: 103.84328°W | ③<br>-BOTTOM HOLE-<br>ROHN STATE LD10-64HN<br>1980' FSL<br>660' FEL<br>LAT: 40.76412°N<br>LONG: 103.84327°W | ④<br>-BOTTOM HOLE-<br>ROHN STATE LD10-64-1HN<br>1650' FSL<br>660' FEL<br>LAT: 40.76321°N<br>LONG: 103.84326°W |
| ⑤<br>-BOTTOM HOLE-<br>ROHN STATE LD09-65HN<br>2640' FNL<br>660' FWL<br>LAT: 40.76590°N<br>LONG: 103.87651°W | ⑥<br>-BOTTOM HOLE-<br>ROHN STATE LD09-65-1HN<br>2310' FSL<br>660' FWL<br>LAT: 40.76493°N<br>LONG: 103.87650°W | ⑦<br>-BOTTOM HOLE-<br>ROHN STATE LD09-64HN<br>1980' FSL<br>660' FWL<br>LAT: 40.76402°N<br>LONG: 103.87649°W | ⑧<br>-BOTTOM HOLE-<br>ROHN STATE LD09-64-1HN<br>1650' FSL<br>660' FWL<br>LAT: 40.76312°N<br>LONG: 103.87649°W |



## LEGEND

- = ALIQUOT MONUMENT AS DESCRIBED
- = CALCULATED POSITION

SHEET 1 OF 2

DATE: rev 3/14/13  
PROJECT#: 2012159

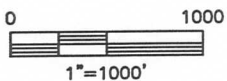
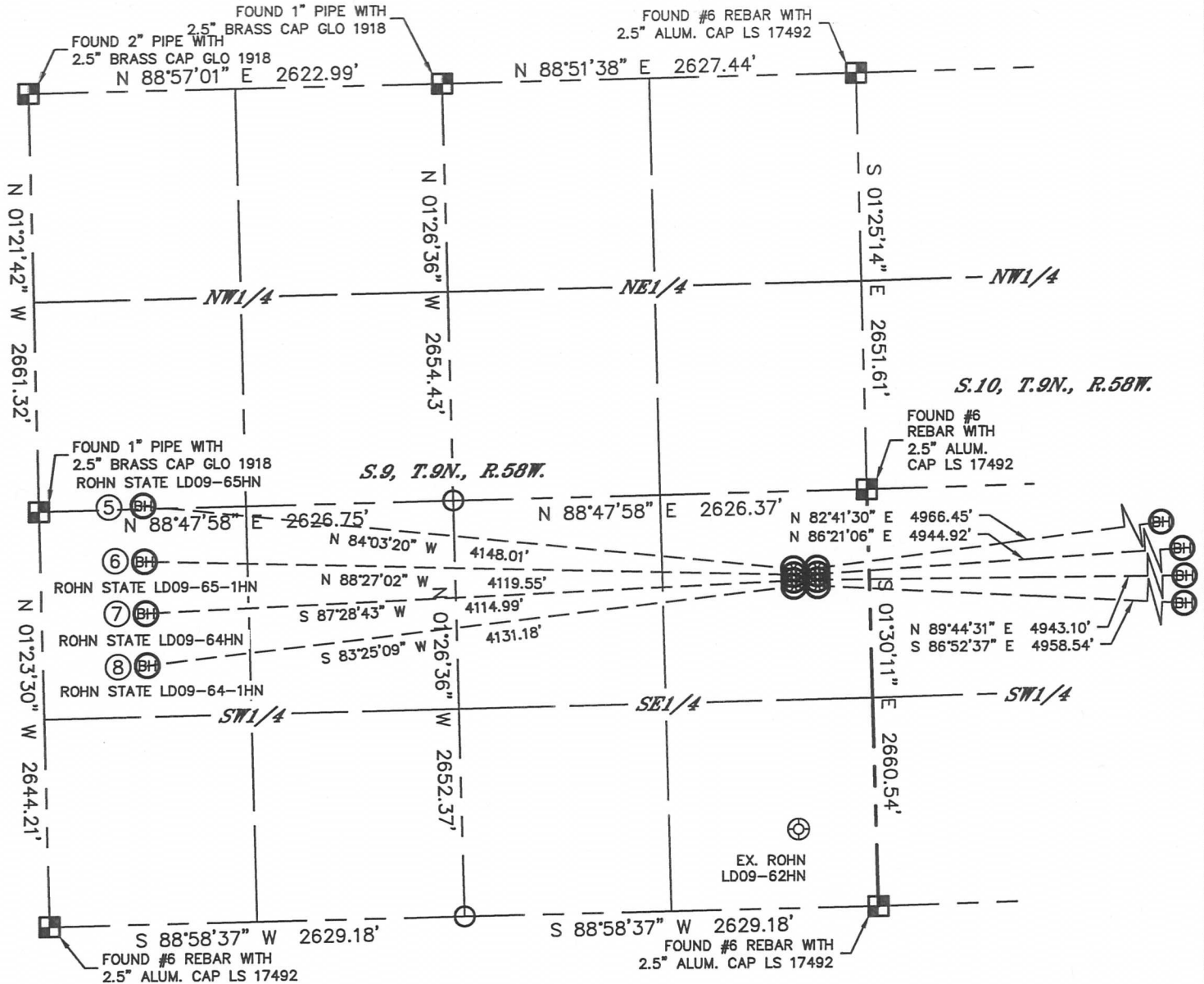
# MULTI-WELL PLAN

ROHN STATE LD10-65HN PAD,

ROHN STATE LD09-65HN PAD

THIS MAP DOES NOT REPRESENT A BOUNDARY SURVEY

SECTION: 9  
TOWNSHIP: 9N  
RANGE: 58W



## LEGEND

- = ALIQUOT MONUMENT AS DESCRIBED
- = CALCULATED POSITION

- |   |   |   |   |
|---|---|---|---|
| <p>①</p> <p>—BOTTOM HOLE—<br/>ROHN STATE LD10-65HN<br/>2640' FNL<br/>660' FEL<br/>LAT: 40.76600°N<br/>LONG: 103.84329°W</p> | <p>②</p> <p>—BOTTOM HOLE—<br/>ROHN STATE LD10-65-1HN<br/>2310' FSL<br/>660' FEL<br/>LAT: 40.76502°N<br/>LONG: 103.84328°W</p> | <p>③</p> <p>—BOTTOM HOLE—<br/>ROHN STATE LD10-64HN<br/>1980' FSL<br/>660' FEL<br/>LAT: 40.76412°N<br/>LONG: 103.84327°W</p> | <p>④</p> <p>—BOTTOM HOLE—<br/>ROHN STATE LD10-64-1HN<br/>1650' FSL<br/>660' FEL<br/>LAT: 40.76321°N<br/>LONG: 103.84326°W</p> |
| <p>⑤</p> <p>—BOTTOM HOLE—<br/>ROHN STATE LD09-65HN<br/>2640' FNL<br/>660' FWL<br/>LAT: 40.76590°N<br/>LONG: 103.87651°W</p> | <p>⑥</p> <p>—BOTTOM HOLE—<br/>ROHN STATE LD09-65-1HN<br/>2310' FSL<br/>660' FWL<br/>LAT: 40.76493°N<br/>LONG: 103.87650°W</p> | <p>⑦</p> <p>—BOTTOM HOLE—<br/>ROHN STATE LD09-64HN<br/>1980' FSL<br/>660' FWL<br/>LAT: 40.76402°N<br/>LONG: 103.87649°W</p> | <p>⑧</p> <p>—BOTTOM HOLE—<br/>ROHN STATE LD09-64-1HN<br/>1650' FSL<br/>660' FWL<br/>LAT: 40.76312°N<br/>LONG: 103.87649°W</p> |

SHEET 2 OF 2

DATE: rev 3/14/13  
PROJECT#: 2012159

## MULTI-WELL PLAN

ROHN STATE LD10-65HN PAD,  
ROHN STATE LD09-65HN PAD

SECTION: 9  
TOWNSHIP: 9N  
RANGE: 58W

