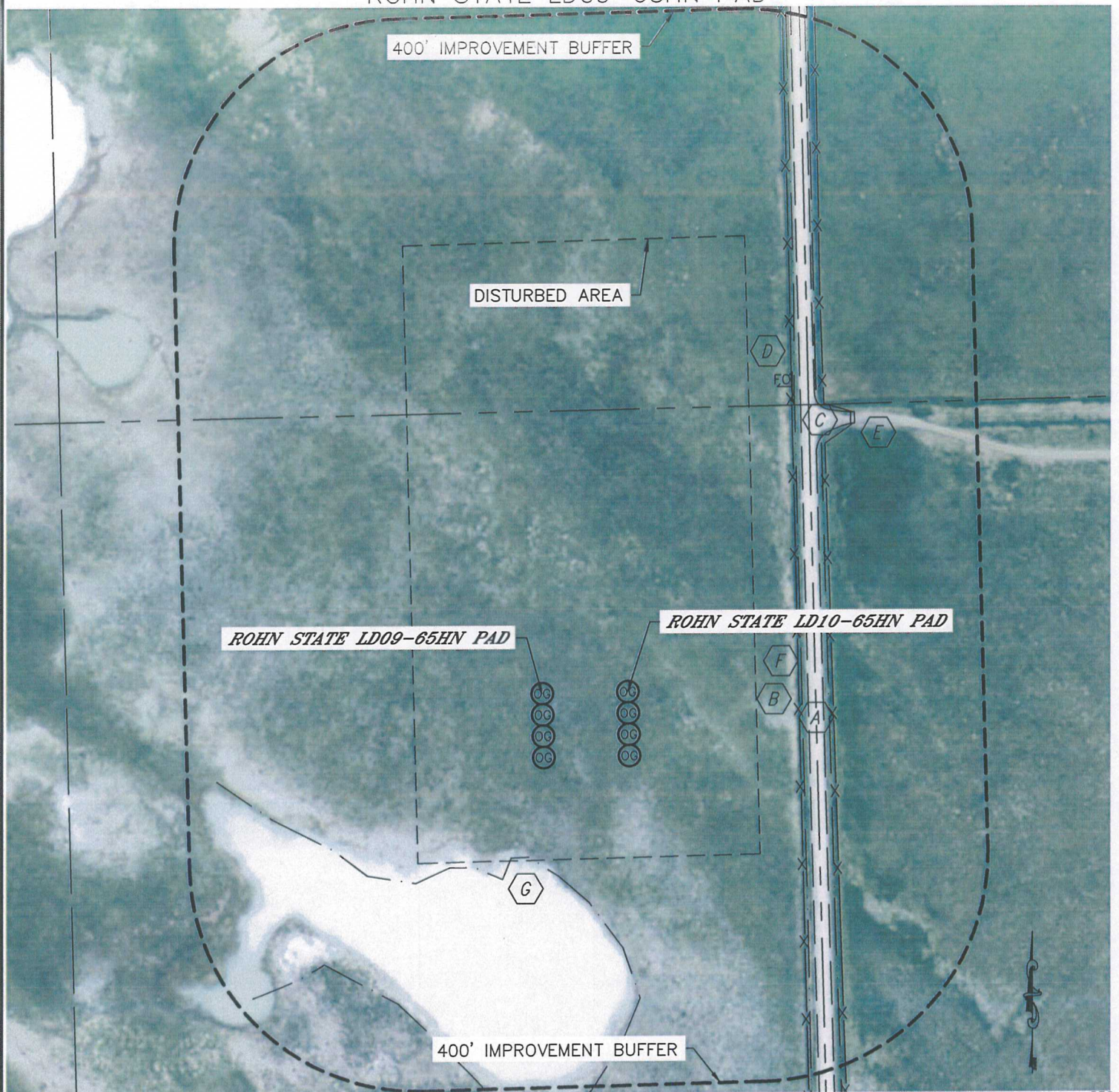


LOCATION DRAWING

ROHN STATE LD10-65HN PAD,
ROHN STATE LD09-65HN PAD

SECTION: 9
TOWNSHIP: 9N
RANGE: 58W



IMPROVEMENTS:

(MEASURED FROM THE PROPOSED ROHN STATE LD10-65HN WELL LOCATION)

- | | | |
|---------------------------------|--------------------------------------|---------------------------|
| A COUNTY ROAD 127 317' E | D FIBER OPTIC MARKER 587' NE | G LOW AREA 338' SW |
| B FENCE 300' E, 360' E | E CATTLE GUARD 612' NE | |
| C FIELD ROAD 592' NE | F BARROW DITCH 306' E, 353' E | |

NEAREST: BUILDING 5280'+, PUBLIC ROAD 317' E (CR 127),
ABOVE GROUND UTILITY 2258' NE, RAILROAD 5280'+, PROPERTY LINE 330' E

DATE: rev 3/14/13
PROJECT#: 2012159