

AXIA ENERGY
BULLDOG #22-41V-890
LOCATED IN MOFFAT COUNTY, COLORADO
SECTION 23, T8N, R90W, 6th P.M.

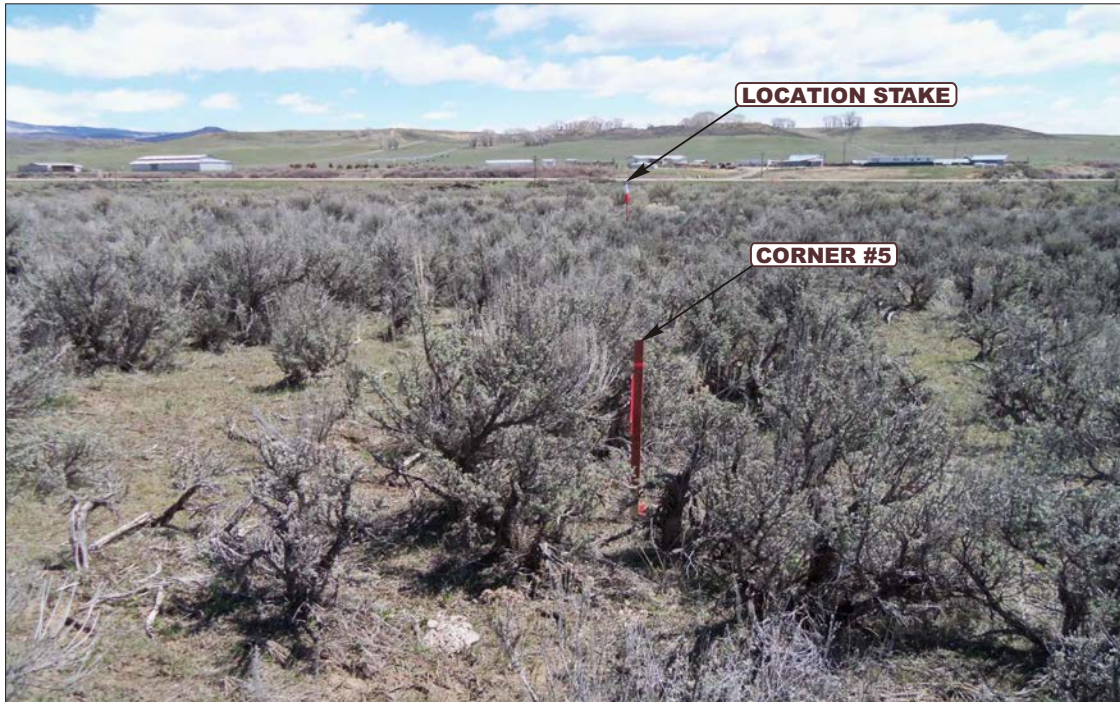


PHOTO: VIEW FROM CORNER #5 TO LOCATION STAKE

CAMERA ANGLE: EASTERLY



PHOTO: VIEW FROM BEGINNING OF PROPOSED ACCESS

CAMERA ANGLE: WESTERLY



- Since 1964 -

UE&S

Uintah Engineering & Land Surveying
85 South 200 East Vernal, Utah 84078
(435) 789-1017 * FAX (435) 789-1813

LOCATION PHOTOS

05 **09** **13**
MONTH DAY YEAR

TAKEN BY: B.H.

DRAWN BY: J.L.H.

REVISED: 00-00-00

PHOTO
P1

AXIA ENERGY
BULLDOG #22-41V-890
LOCATED IN MOFFAT COUNTY, COLORADO
SECTION 23, T8N, R90W, 6th P.M.



PHOTO: VIEW OF LOCATION STAKE

CAMERA ANGLE: NORTHERLY



PHOTO: VIEW OF LOCATION STAKE

CAMERA ANGLE: EASTERLY



- Since 1964 -

UELS

Uintah Engineering & Land Surveying
85 South 200 East Vernal, Utah 84078
(435) 789-1017 * FAX (435) 789-1813

LOCATION PHOTOS

05 **09** **13**
MONTH DAY YEAR

TAKEN BY: B.H.

DRAWN BY: J.L.H.

REVISED: 00-00-00

PHOTO
P2

AXIA ENERGY
BULLDOG #22-41V-890
LOCATED IN MOFFAT COUNTY, COLORADO
SECTION 23, T8N, R90W, 6th P.M.



PHOTO: VIEW OF LOCATION STAKE

CAMERA ANGLE: SOUTHERLY



PHOTO: VIEW OF LOCATION STAKE

CAMERA ANGLE: WESTERLY



- Since 1964 -

UELS

Uintah Engineering & Land Surveying
85 South 200 East Vernal, Utah 84078
(435) 789-1017 * FAX (435) 789-1813

LOCATION PHOTOS

05 **09** **13**
MONTH DAY YEAR

TAKEN BY: B.H.

DRAWN BY: J.L.H.

REVISED: 00-00-00

PHOTO
P3