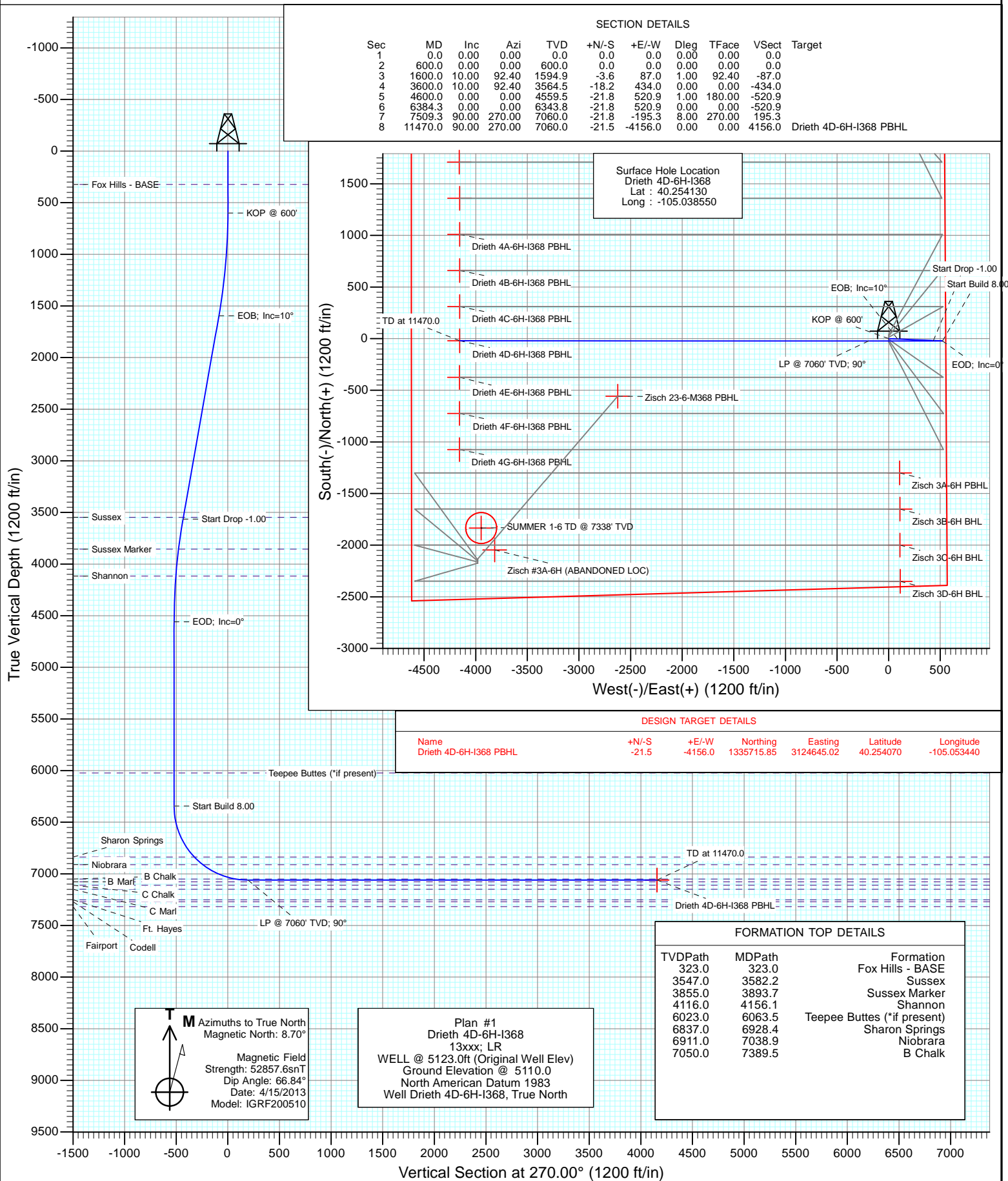




Project: DJ Wattenberg  
Site: S6-T3N-R68W (Zisch/Drieth)  
Well: Drieth 4D-6H-I368  
Design: Plan #1



## Planning Report

<b>Database:</b>	USA EDM 5000 Multi Users DB	<b>Local Co-ordinate Reference:</b>	Well Drieth 4D-6H-I368
<b>Company:</b>	EnCana Oil & Gas (USA) Inc	<b>TVD Reference:</b>	WELL @ 5123.0ft (Original Well Elev)
<b>Project:</b>	DJ Wattenberg	<b>MD Reference:</b>	WELL @ 5123.0ft (Original Well Elev)
<b>Site:</b>	S6-T3N-R68W (Zisch/Drieth)	<b>North Reference:</b>	True
<b>Well:</b>	Drieth 4D-6H-I368	<b>Survey Calculation Method:</b>	Minimum Curvature
<b>Wellbore:</b>	Hz		
<b>Design:</b>	Plan #1		

<b>Project</b>	DJ Wattenberg		
<b>Map System:</b>	US State Plane 1983	<b>System Datum:</b>	Mean Sea Level
<b>Geo Datum:</b>	North American Datum 1983		
<b>Map Zone:</b>	Colorado Northern Zone		

Site		S6-T3N-R68W (Zisch/Drieth)			
Site Position:		Northing:	1,333,692.14 ft	Latitude:	40.248510
From:	Lat/Long	Easting:	3,124,995.76 ft	Longitude:	-105.052220
Position Uncertainty:	0.0 ft	Slot Radius:	13.200 in	Grid Convergence:	0.29 °

Well	Drieth 4D-6H-I368					
Well Position	+N/-S	0.0 ft	Northing:	1,335,758.97 ft	Latitude:	40.254130
	+E/-W	0.0 ft	Easting:	3,128,800.81 ft	Longitude:	-105.038550
Position Uncertainty		0.0 ft	Wellhead Elevation:	ft	Ground Level:	5,110.0 ft

<b>Wellbore</b>	Hz				
<b>Magnetics</b>	<b>Model Name</b>	<b>Sample Date</b>	<b>Declination (°)</b>	<b>Dip Angle (°)</b>	<b>Field Strength (nT)</b>
	IGRF200510	4/15/2013	8.70	66.84	52,858

<b>Design</b>	Plan #1			
<b>Audit Notes:</b>				
<b>Version:</b>	<b>Phase:</b>	PLAN	<b>Tie On Depth:</b>	0.0
<b>Vertical Section:</b>	<b>Depth From (TVD) (ft)</b>	<b>+N/-S (ft)</b>	<b>+E/-W (ft)</b>	<b>Direction (°)</b>
	0.0	0.0	0.0	270.00

<b>Plan Sections</b>										
Measured Depth (ft)	Inclination (°)	Azimuth (°)	Vertical Depth (ft)	+N/-S (ft)	+E/-W (ft)	Dogleg Rate (°/100ft)	Build Rate (°/100ft)	Turn Rate (°/100ft)	TFO (°)	Target
0.0	0.00	0.00	0.0	0.0	0.0	0.00	0.00	0.00	0.00	
600.0	0.00	0.00	600.0	0.0	0.0	0.00	0.00	0.00	0.00	
1,600.0	10.00	92.40	1,594.9	-3.6	87.0	1.00	1.00	0.00	92.40	
3,600.0	10.00	92.40	3,564.5	-18.2	434.0	0.00	0.00	0.00	0.00	
4,600.0	0.00	0.00	4,559.5	-21.8	520.9	1.00	-1.00	0.00	180.00	
6,384.3	0.00	0.00	6,343.8	-21.8	520.9	0.00	0.00	0.00	0.00	
7,509.3	90.00	270.00	7,060.0	-21.8	-195.3	8.00	8.00	0.00	270.00	
11,470.0	90.00	270.00	7,060.0	-21.5	-4,156.0	0.00	0.00	0.00	0.00	Drieth 4D-6H-I368 PB

# Planning Report

<b>Database:</b>	USA EDM 5000 Multi Users DB	<b>Local Co-ordinate Reference:</b>	Well Drieth 4D-6H-I368
<b>Company:</b>	EnCana Oil & Gas (USA) Inc	<b>TVD Reference:</b>	WELL @ 5123.0ft (Original Well Elev)
<b>Project:</b>	DJ Wattenberg	<b>MD Reference:</b>	WELL @ 5123.0ft (Original Well Elev)
<b>Site:</b>	S6-T3N-R68W (Zisch/Drieth)	<b>North Reference:</b>	True
<b>Well:</b>	Drieth 4D-6H-I368	<b>Survey Calculation Method:</b>	Minimum Curvature
<b>Wellbore:</b>	Hz		
<b>Design:</b>	Plan #1		

## Planned Survey

Measured Depth (ft)	Inclination (°)	Azimuth (°)	Vertical Depth (ft)	+N/-S (ft)	+E/-W (ft)	Vertical Section (ft)	Dogleg Rate (°/100ft)	Build Rate (°/100ft)	Comments / Formations
0.0	0.00	0.00	0.0	0.0	0.0	0.0	0.00	0.00	
100.0	0.00	0.00	100.0	0.0	0.0	0.0	0.00	0.00	
200.0	0.00	0.00	200.0	0.0	0.0	0.0	0.00	0.00	
300.0	0.00	0.00	300.0	0.0	0.0	0.0	0.00	0.00	
323.0	0.00	0.00	323.0	0.0	0.0	0.0	0.00	0.00	Fox Hills - BASE
400.0	0.00	0.00	400.0	0.0	0.0	0.0	0.00	0.00	
500.0	0.00	0.00	500.0	0.0	0.0	0.0	0.00	0.00	
600.0	0.00	0.00	600.0	0.0	0.0	0.0	0.00	0.00	KOP @ 600'
700.0	1.00	92.40	700.0	0.0	0.9	-0.9	1.00	1.00	
800.0	2.00	92.40	800.0	-0.1	3.5	-3.5	1.00	1.00	
900.0	3.00	92.40	899.9	-0.3	7.8	-7.8	1.00	1.00	
1,000.0	4.00	92.40	999.7	-0.6	13.9	-13.9	1.00	1.00	
1,100.0	5.00	92.40	1,099.4	-0.9	21.8	-21.8	1.00	1.00	
1,200.0	6.00	92.40	1,198.9	-1.3	31.4	-31.4	1.00	1.00	
1,300.0	7.00	92.40	1,298.3	-1.8	42.7	-42.7	1.00	1.00	
1,400.0	8.00	92.40	1,397.4	-2.3	55.7	-55.7	1.00	1.00	
1,500.0	9.00	92.40	1,496.3	-3.0	70.5	-70.5	1.00	1.00	
1,600.0	10.00	92.40	1,594.9	-3.6	87.0	-87.0	1.00	1.00	EOB; Inc=10°
1,700.0	10.00	92.40	1,693.4	-4.4	104.3	-104.3	0.00	0.00	
1,800.0	10.00	92.40	1,791.9	-5.1	121.7	-121.7	0.00	0.00	
1,900.0	10.00	92.40	1,890.4	-5.8	139.0	-139.0	0.00	0.00	
2,000.0	10.00	92.40	1,988.9	-6.6	156.4	-156.4	0.00	0.00	
2,100.0	10.00	92.40	2,087.3	-7.3	173.7	-173.7	0.00	0.00	
2,200.0	10.00	92.40	2,185.8	-8.0	191.1	-191.1	0.00	0.00	
2,300.0	10.00	92.40	2,284.3	-8.7	208.4	-208.4	0.00	0.00	
2,400.0	10.00	92.40	2,382.8	-9.5	225.8	-225.8	0.00	0.00	
2,500.0	10.00	92.40	2,481.3	-10.2	243.1	-243.1	0.00	0.00	
2,600.0	10.00	92.40	2,579.7	-10.9	260.5	-260.5	0.00	0.00	
2,700.0	10.00	92.40	2,678.2	-11.6	277.8	-277.8	0.00	0.00	
2,800.0	10.00	92.40	2,776.7	-12.4	295.2	-295.2	0.00	0.00	
2,900.0	10.00	92.40	2,875.2	-13.1	312.5	-312.5	0.00	0.00	
3,000.0	10.00	92.40	2,973.7	-13.8	329.9	-329.9	0.00	0.00	
3,100.0	10.00	92.40	3,072.1	-14.6	347.2	-347.2	0.00	0.00	
3,200.0	10.00	92.40	3,170.6	-15.3	364.6	-364.6	0.00	0.00	
3,300.0	10.00	92.40	3,269.1	-16.0	381.9	-381.9	0.00	0.00	
3,400.0	10.00	92.40	3,367.6	-16.7	399.3	-399.3	0.00	0.00	
3,500.0	10.00	92.40	3,466.1	-17.5	416.6	-416.6	0.00	0.00	
3,582.2	10.00	92.40	3,547.0	-18.1	430.9	-430.9	0.00	0.00	Sussex
3,600.0	10.00	92.40	3,564.5	-18.2	434.0	-434.0	0.00	0.00	Start Drop -1.00
3,700.0	9.00	92.40	3,663.2	-18.9	450.5	-450.5	1.00	-1.00	
3,800.0	8.00	92.40	3,762.1	-19.5	465.2	-465.2	1.00	-1.00	
3,893.7	7.06	92.40	3,855.0	-20.0	477.5	-477.5	1.00	-1.00	Sussex Marker
3,900.0	7.00	92.40	3,861.2	-20.0	478.3	-478.3	1.00	-1.00	
4,000.0	6.00	92.40	3,960.6	-20.5	489.6	-489.6	1.00	-1.00	
4,100.0	5.00	92.40	4,060.1	-20.9	499.1	-499.1	1.00	-1.00	
4,156.1	4.44	92.40	4,116.0	-21.1	503.8	-503.8	1.00	-1.00	Shannon
4,200.0	4.00	92.40	4,159.8	-21.2	507.0	-507.0	1.00	-1.00	
4,300.0	3.00	92.40	4,259.6	-21.5	513.1	-513.1	1.00	-1.00	
4,400.0	2.00	92.40	4,359.5	-21.7	517.4	-517.4	1.00	-1.00	
4,500.0	1.00	92.40	4,459.5	-21.8	520.1	-520.1	1.00	-1.00	
4,600.0	0.00	0.00	4,559.5	-21.8	520.9	-520.9	1.00	-1.00	EOD; Inc=0°
4,700.0	0.00	0.00	4,659.5	-21.8	520.9	-520.9	0.00	0.00	

# Planning Report

<b>Database:</b>	USA EDM 5000 Multi Users DB	<b>Local Co-ordinate Reference:</b>	Well Drieth 4D-6H-I368
<b>Company:</b>	EnCana Oil & Gas (USA) Inc	<b>TVD Reference:</b>	WELL @ 5123.0ft (Original Well Elev)
<b>Project:</b>	DJ Wattenberg	<b>MD Reference:</b>	WELL @ 5123.0ft (Original Well Elev)
<b>Site:</b>	S6-T3N-R68W (Zisch/Drieth)	<b>North Reference:</b>	True
<b>Well:</b>	Drieth 4D-6H-I368	<b>Survey Calculation Method:</b>	Minimum Curvature
<b>Wellbore:</b>	Hz		
<b>Design:</b>	Plan #1		

## Planned Survey

Measured Depth (ft)	Inclination (°)	Azimuth (°)	Vertical Depth (ft)	+N/-S (ft)	+E/-W (ft)	Vertical Section (ft)	Dogleg Rate (°/100ft)	Build Rate (°/100ft)	Comments / Formations
4,800.0	0.00	0.00	4,759.5	-21.8	520.9	-520.9	0.00	0.00	
4,900.0	0.00	0.00	4,859.5	-21.8	520.9	-520.9	0.00	0.00	
5,000.0	0.00	0.00	4,959.5	-21.8	520.9	-520.9	0.00	0.00	
5,100.0	0.00	0.00	5,059.5	-21.8	520.9	-520.9	0.00	0.00	
5,200.0	0.00	0.00	5,159.5	-21.8	520.9	-520.9	0.00	0.00	
5,300.0	0.00	0.00	5,259.5	-21.8	520.9	-520.9	0.00	0.00	
5,400.0	0.00	0.00	5,359.5	-21.8	520.9	-520.9	0.00	0.00	
5,500.0	0.00	0.00	5,459.5	-21.8	520.9	-520.9	0.00	0.00	
5,600.0	0.00	0.00	5,559.5	-21.8	520.9	-520.9	0.00	0.00	
5,700.0	0.00	0.00	5,659.5	-21.8	520.9	-520.9	0.00	0.00	
5,800.0	0.00	0.00	5,759.5	-21.8	520.9	-520.9	0.00	0.00	
5,900.0	0.00	0.00	5,859.5	-21.8	520.9	-520.9	0.00	0.00	
6,000.0	0.00	0.00	5,959.5	-21.8	520.9	-520.9	0.00	0.00	
6,063.5	0.00	0.00	6,023.0	-21.8	520.9	-520.9	0.00	0.00	Teepee Buttes (*if present)
6,100.0	0.00	0.00	6,059.5	-21.8	520.9	-520.9	0.00	0.00	
6,200.0	0.00	0.00	6,159.5	-21.8	520.9	-520.9	0.00	0.00	
6,300.0	0.00	0.00	6,259.5	-21.8	520.9	-520.9	0.00	0.00	
6,384.3	0.00	0.00	6,343.8	-21.8	520.9	-520.9	0.00	0.00	Start Build 8.00
6,400.0	1.25	270.00	6,359.5	-21.8	520.8	-520.8	8.00	8.00	
6,500.0	9.25	270.00	6,459.0	-21.8	511.6	-511.6	8.00	8.00	
6,600.0	17.25	270.00	6,556.2	-21.8	488.7	-488.7	8.00	8.00	
6,700.0	25.25	270.00	6,649.4	-21.8	452.5	-452.5	8.00	8.00	
6,800.0	33.25	270.00	6,736.5	-21.8	403.7	-403.7	8.00	8.00	
6,900.0	41.25	270.00	6,816.1	-21.8	343.2	-343.2	8.00	8.00	
6,928.4	43.52	270.00	6,837.0	-21.8	324.1	-324.1	8.00	8.00	Sharon Springs
7,000.0	49.25	270.00	6,886.4	-21.8	272.2	-272.2	8.00	8.00	
7,038.9	52.37	270.00	6,911.0	-21.8	242.0	-242.0	8.00	8.00	Niobrara
7,100.0	57.25	270.00	6,946.2	-21.8	192.1	-192.1	8.00	8.00	
7,200.0	65.25	270.00	6,994.2	-21.8	104.5	-104.5	8.00	8.00	
7,300.0	73.25	270.00	7,029.6	-21.8	11.1	-11.1	8.00	8.00	
7,389.5	80.41	270.00	7,050.0	-21.8	-76.0	76.0	8.00	8.00	B Chalk
7,400.0	81.25	270.00	7,051.7	-21.8	-86.4	86.4	8.00	8.00	
7,500.0	89.25	270.00	7,059.9	-21.8	-185.9	185.9	8.00	8.00	
7,509.3	90.00	270.00	7,060.0	-21.8	-195.3	195.3	8.00	8.00	LP @ 7060' TVD; 90°
7,600.0	90.00	270.00	7,060.0	-21.8	-285.9	285.9	0.00	0.00	
7,700.0	90.00	270.00	7,060.0	-21.8	-385.9	385.9	0.00	0.00	
7,800.0	90.00	270.00	7,060.0	-21.8	-485.9	485.9	0.00	0.00	
7,900.0	90.00	270.00	7,060.0	-21.8	-585.9	585.9	0.00	0.00	
8,000.0	90.00	270.00	7,060.0	-21.7	-685.9	685.9	0.00	0.00	
8,100.0	90.00	270.00	7,060.0	-21.7	-785.9	785.9	0.00	0.00	
8,200.0	90.00	270.00	7,060.0	-21.7	-885.9	885.9	0.00	0.00	
8,300.0	90.00	270.00	7,060.0	-21.7	-985.9	985.9	0.00	0.00	
8,400.0	90.00	270.00	7,060.0	-21.7	-1,085.9	1,085.9	0.00	0.00	
8,500.0	90.00	270.00	7,060.0	-21.7	-1,185.9	1,185.9	0.00	0.00	
8,600.0	90.00	270.00	7,060.0	-21.7	-1,285.9	1,285.9	0.00	0.00	
8,700.0	90.00	270.00	7,060.0	-21.7	-1,385.9	1,385.9	0.00	0.00	
8,800.0	90.00	270.00	7,060.0	-21.7	-1,485.9	1,485.9	0.00	0.00	
8,900.0	90.00	270.00	7,060.0	-21.7	-1,585.9	1,585.9	0.00	0.00	
9,000.0	90.00	270.00	7,060.0	-21.7	-1,685.9	1,685.9	0.00	0.00	
9,100.0	90.00	270.00	7,060.0	-21.7	-1,785.9	1,785.9	0.00	0.00	
9,200.0	90.00	270.00	7,060.0	-21.7	-1,885.9	1,885.9	0.00	0.00	
9,300.0	90.00	270.00	7,060.0	-21.7	-1,985.9	1,985.9	0.00	0.00	

## Planning Report

<b>Database:</b>	USA EDM 5000 Multi Users DB	<b>Local Co-ordinate Reference:</b>	Well Drieth 4D-6H-I368
<b>Company:</b>	EnCana Oil & Gas (USA) Inc	<b>TVD Reference:</b>	WELL @ 5123.0ft (Original Well Elev)
<b>Project:</b>	DJ Wattenberg	<b>MD Reference:</b>	WELL @ 5123.0ft (Original Well Elev)
<b>Site:</b>	S6-T3N-R68W (Zisch/Drieth)	<b>North Reference:</b>	True
<b>Well:</b>	Drieth 4D-6H-I368	<b>Survey Calculation Method:</b>	Minimum Curvature
<b>Wellbore:</b>	Hz		
<b>Design:</b>	Plan #1		

### Planned Survey

Measured Depth (ft)	Inclination (°)	Azimuth (°)	Vertical Depth (ft)	+N/-S (ft)	+E/-W (ft)	Vertical Section (ft)	Dogleg Rate (°/100ft)	Build Rate (°/100ft)	Comments / Formations
9,400.0	90.00	270.00	7,060.0	-21.6	-2,085.9	2,085.9	0.00	0.00	
9,500.0	90.00	270.00	7,060.0	-21.6	-2,185.9	2,185.9	0.00	0.00	
9,600.0	90.00	270.00	7,060.0	-21.6	-2,285.9	2,285.9	0.00	0.00	
9,700.0	90.00	270.00	7,060.0	-21.6	-2,385.9	2,385.9	0.00	0.00	
9,800.0	90.00	270.00	7,060.0	-21.6	-2,485.9	2,485.9	0.00	0.00	
9,900.0	90.00	270.00	7,060.0	-21.6	-2,585.9	2,585.9	0.00	0.00	
10,000.0	90.00	270.00	7,060.0	-21.6	-2,685.9	2,685.9	0.00	0.00	
10,100.0	90.00	270.00	7,060.0	-21.6	-2,785.9	2,785.9	0.00	0.00	
10,200.0	90.00	270.00	7,060.0	-21.6	-2,885.9	2,885.9	0.00	0.00	
10,300.0	90.00	270.00	7,060.0	-21.6	-2,985.9	2,985.9	0.00	0.00	
10,400.0	90.00	270.00	7,060.0	-21.6	-3,085.9	3,085.9	0.00	0.00	
10,500.0	90.00	270.00	7,060.0	-21.6	-3,185.9	3,185.9	0.00	0.00	
10,600.0	90.00	270.00	7,060.0	-21.6	-3,285.9	3,285.9	0.00	0.00	
10,700.0	90.00	270.00	7,060.0	-21.6	-3,385.9	3,385.9	0.00	0.00	
10,800.0	90.00	270.00	7,060.0	-21.5	-3,485.9	3,485.9	0.00	0.00	
10,900.0	90.00	270.00	7,060.0	-21.5	-3,585.9	3,585.9	0.00	0.00	
11,000.0	90.00	270.00	7,060.0	-21.5	-3,685.9	3,685.9	0.00	0.00	
11,100.0	90.00	270.00	7,060.0	-21.5	-3,785.9	3,785.9	0.00	0.00	
11,200.0	90.00	270.00	7,060.0	-21.5	-3,885.9	3,885.9	0.00	0.00	
11,300.0	90.00	270.00	7,060.0	-21.5	-3,985.9	3,985.9	0.00	0.00	
11,400.0	90.00	270.00	7,060.0	-21.5	-4,085.9	4,085.9	0.00	0.00	
11,470.0	90.00	270.00	7,060.0	-21.5	-4,156.0	4,156.0	0.00	0.00	TD at 11470.0 - Drieth 4D-6H-I368 PBHL

### Targets

Target Name	Dip Angle (°)	Dip Dir. (°)	TVD (ft)	+N/-S (ft)	+E/-W (ft)	Northing (ft)	Easting (ft)	Latitude	Longitude
- hit/miss target									
- Shape									
Drieth 4D-6H-I368 PBHL	0.00	0.00	7,060.0	-21.5	-4,156.0	1,335,715.85	3,124,645.02	40.254070	-105.053440
- plan hits target center									
- Point									

### Formations

Measured Depth (ft)	Vertical Depth (ft)	Name	Lithology	Dip (°)	Dip Direction (°)
323.0	323.0	Fox Hills - BASE			
3,582.2	3,547.0	Sussex			
3,893.7	3,855.0	Sussex Marker			
4,156.1	4,116.0	Shannon			
6,063.5	6,023.0	Teepee Buttes (*if present)			
6,928.4	6,837.0	Sharon Springs			
7,038.9	6,911.0	Niobrara			
7,389.5	7,050.0	B Chalk			

## Planning Report

<b>Database:</b>	USA EDM 5000 Multi Users DB	<b>Local Co-ordinate Reference:</b>	Well Drieth 4D-6H-I368
<b>Company:</b>	EnCana Oil & Gas (USA) Inc	<b>TVD Reference:</b>	WELL @ 5123.0ft (Original Well Elev)
<b>Project:</b>	DJ Wattenberg	<b>MD Reference:</b>	WELL @ 5123.0ft (Original Well Elev)
<b>Site:</b>	S6-T3N-R68W (Zisch/Drieth)	<b>North Reference:</b>	True
<b>Well:</b>	Drieth 4D-6H-I368	<b>Survey Calculation Method:</b>	Minimum Curvature
<b>Wellbore:</b>	Hz		
<b>Design:</b>	Plan #1		

### Plan Annotations

Measured Depth (ft)	Vertical Depth (ft)	Local Coordinates		Comment
		+N/-S (ft)	+E/-W (ft)	
600.0	600.0	0.0	0.0	KOP @ 600'
1,600.0	1,594.9	-3.6	87.0	EOB; Inc=10°
3,600.0	3,564.5	-18.2	434.0	Start Drop -1.00
4,600.0	4,559.5	-21.8	520.9	EOD; Inc=0°
6,384.3	6,343.8	-21.8	520.9	Start Build 8.00
7,509.3	7,060.0	-21.8	-195.3	LP @ 7060' TVD; 90°
11,470.0	7,060.0	-21.5	-4,156.0	TD at 11470.0

# **EnCana Oil & Gas (USA) Inc**

**DJ Wattenberg**

**S6-T3N-R68W (Zisch/Drieth)**

**Drieth 4D-6H-I368**

**Hz**

**Plan #1**

## **Anticollision Report**

**15 April, 2013**

## Anticollision Report

<b>Company:</b>	EnCana Oil & Gas (USA) Inc	<b>Local Co-ordinate Reference:</b>	Well Drieth 4D-6H-I368
<b>Project:</b>	DJ Wattenberg	<b>TVD Reference:</b>	WELL @ 5123.0ft (Original Well Elev)
<b>Reference Site:</b>	S6-T3N-R68W (Zisch/Drieth)	<b>MD Reference:</b>	WELL @ 5123.0ft (Original Well Elev)
<b>Site Error:</b>	0.0ft	<b>North Reference:</b>	True
<b>Reference Well:</b>	Drieth 4D-6H-I368	<b>Survey Calculation Method:</b>	Minimum Curvature
<b>Well Error:</b>	0.0ft	<b>Output errors are at</b>	2.00 sigma
<b>Reference Wellbore</b>	Hz	<b>Database:</b>	USA EDM 5000 Multi Users DB
<b>Reference Design:</b>	Plan #1	<b>Offset TVD Reference:</b>	Offset Datum

<b>Reference</b>	Plan #1		
<b>Filter type:</b>	NO GLOBAL FILTER: Using user defined selection & filtering criteria		
<b>Interpolation Method:</b>	MD Interval 100.0ft	<b>Error Model:</b>	Systematic Ellipse
<b>Depth Range:</b>	Unlimited	<b>Scan Method:</b>	Closest Approach 3D
<b>Results Limited by:</b>	Maximum center-center distance of 500.0ft	<b>Error Surface:</b>	Elliptical Conic
<b>Warning Levels Evaluated at:</b>	2.00 Sigma		

<b>Survey Tool Program</b>	<b>Date</b>	4/15/2013		
<b>From (ft)</b>	<b>To (ft)</b>	<b>Survey (Wellbore)</b>	<b>Tool Name</b>	<b>Description</b>
0.0	11,470.0	Plan #1 (Hz)	MWD	Geolink MWD

Summary						
Site Name	Reference Measured Depth (ft)	Offset Measured Depth (ft)	Distance Between Centres (ft)	Distance Between Ellipses (ft)	Separation Factor	Warning
<b>Offset Well - Wellbore - Design</b>						
S6-T3N-R68W (Zisch/Drieth)						
Breakneck Properties 21-6 - DD - Plan #1						Out of range
Drieth 1A-6H-A368 - Hz - Plan #1						Out of range
Drieth 1B-6H-A368 - Hz - Plan #1						Out of range
Drieth 1C-6H-A368 - Hz - Plan #1						Out of range
Drieth 1D-6H-A368 - Hz - Plan #1						Out of range
Drieth 1E-6H-A368 - Hz - Plan #1						Out of range
Drieth 4A-6H-I368 - Hz - Plan #1	200.0	200.0	32.9	32.3	50.409	CC, ES
Drieth 4A-6H-I368 - Hz - Plan #1	600.0	597.4	45.2	43.1	21.718	SF
Drieth 4B-6H-I368 - Hz - Plan #1	300.0	300.0	22.0	21.0	21.995	CC, ES
Drieth 4B-6H-I368 - Hz - Plan #1	600.0	598.9	28.0	26.0	13.616	SF
Drieth 4C-6H-I368 - Hz - Plan #1	400.0	400.0	11.3	9.9	8.350	CC
Drieth 4C-6H-I368 - Hz - Plan #1	500.0	499.9	11.5	9.8	6.788	ES
Drieth 4C-6H-I368 - Hz - Plan #1	11,470.0	11,702.4	397.9	215.6	2.183	SF
Drieth 4E-6H-I368 - Hz - Plan #1	400.0	400.0	7.3	5.9	5.393	CC, ES
Drieth 4E-6H-I368 - Hz - Plan #1	11,470.0	11,715.6	416.2	230.7	2.243	SF
Drieth 4F-6H-I368 - Hz - Plan #1	266.3	267.3	18.2	17.3	20.557	CC
Drieth 4F-6H-I368 - Hz - Plan #1	300.0	301.0	18.2	17.2	18.150	ES
Drieth 4F-6H-I368 - Hz - Plan #1	600.0	600.0	25.0	22.9	12.106	SF
Drieth 4G-6H-I368 - Hz - Plan #1	166.3	167.3	29.1	28.6	54.273	CC
Drieth 4G-6H-I368 - Hz - Plan #1	200.0	201.0	29.1	28.5	44.527	ES
Drieth 4G-6H-I368 - Hz - Plan #1	600.0	598.5	42.1	40.0	20.153	SF
SUMMER 6-1 (EXISTING) - EXISTING - NO SURVEYS						
Zisch 23-6-M368 - DD - Plan #1						Out of range
Zisch 3A-6H-M368 - HZ - Plan #1						Out of range
Zisch 3B-6H-M368 - HZ - Plan #1						Out of range
Zisch 3C-6H-M368 - HZ - Plan #1						Out of range
Zisch 3D-6H-M368 - HZ - Plan #1						Out of range



# Anticollision Report

<b>Company:</b>	EnCana Oil & Gas (USA) Inc	<b>Local Co-ordinate Reference:</b>	Well Drieth 4D-6H-I368
<b>Project:</b>	DJ Wattenberg	<b>TVD Reference:</b>	WELL @ 5123.0ft (Original Well Elev)
<b>Reference Site:</b>	S6-T3N-R68W (Zisch/Drieth)	<b>MD Reference:</b>	WELL @ 5123.0ft (Original Well Elev)
<b>Site Error:</b>	0.0ft	<b>North Reference:</b>	True
<b>Reference Well:</b>	Drieth 4D-6H-I368	<b>Survey Calculation Method:</b>	Minimum Curvature
<b>Well Error:</b>	0.0ft	<b>Output errors are at</b>	2.00 sigma
<b>Reference Wellbore</b>	Hz	<b>Database:</b>	USA EDM 5000 Multi Users DB
<b>Reference Design:</b>	Plan #1	<b>Offset TVD Reference:</b>	Offset Datum

Offset Design S6-T3N-R68W (Zisch/Drieth) - Drieth 4A-6H-I368 - Hz - Plan #1													Offset Site Error: 0.0 ft	
Survey Program: 0-MWD													Offset Well Error: 0.0 ft	
Reference		Offset		Semi Major Axis			Distance				Total Uncertainty Axis	Separation Factor	Warning	
Measured Depth (ft)	Vertical Depth (ft)	Measured Depth (ft)	Vertical Depth (ft)	Reference (ft)	Offset (ft)	Highside Toolface (°)	Offset Wellbore Centre +N/-S (ft)	+E/-W (ft)	Between Centres (ft)	Between Ellipses (ft)				
0.0	0.0	0.0	0.0	0.0	0.0	-4.87	32.8	-2.8	32.9					
100.0	100.0	100.0	100.0	0.2	0.2	-4.87	32.8	-2.8	32.9	32.6	0.30	108.350		
200.0	200.0	200.0	200.0	0.3	0.3	-4.87	32.8	-2.8	32.9	32.3	0.65	50.409 CC, ES		
300.0	300.0	299.5	299.5	0.5	0.5	-4.06	33.5	-2.4	33.6	32.6	1.00	33.582		
400.0	400.0	399.0	398.9	0.7	0.7	-1.85	35.8	-1.2	35.9	34.5	1.35	26.499		
500.0	500.0	498.3	498.2	0.8	0.9	1.27	39.6	0.9	39.7	38.0	1.71	23.183		
600.0	600.0	597.4	597.1	1.0	1.1	4.73	44.9	3.7	45.2	43.1	2.08	21.718 SF		
700.0	700.0	696.4	695.8	1.2	1.3	-85.17	51.7	7.4	52.3	49.9	2.40	21.780		
800.0	800.0	795.1	794.0	1.4	1.5	-84.34	60.0	11.8	61.0	58.2	2.76	22.114		
900.0	899.9	893.5	891.8	1.6	1.8	-84.61	69.7	17.0	71.1	68.0	3.12	22.771		
1,000.0	999.7	991.6	989.1	1.7	2.0	-85.55	80.9	23.0	82.7	79.2	3.50	23.611		
1,100.0	1,099.4	1,089.3	1,085.8	2.0	2.3	-86.86	93.5	29.8	95.7	91.8	3.90	24.546		
1,200.0	1,198.9	1,186.6	1,181.7	2.2	2.6	-88.36	107.5	37.3	110.3	106.0	4.32	25.515		
1,300.0	1,298.3	1,283.4	1,277.0	2.4	3.0	-89.91	122.8	45.5	126.4	121.6	4.78	26.472		
1,400.0	1,397.4	1,379.8	1,371.4	2.7	3.3	-91.44	139.5	54.4	144.1	138.9	5.26	27.388		
1,500.0	1,496.3	1,475.5	1,465.0	2.9	3.7	-92.90	157.4	64.0	163.5	157.7	5.79	28.244		
1,600.0	1,594.9	1,570.7	1,557.6	3.2	4.1	-94.27	176.6	74.3	184.5	178.1	6.36	29.030		
1,700.0	1,693.4	1,665.3	1,649.4	3.6	4.5	-95.53	197.0	85.3	207.0	200.1	6.95	29.803		
1,800.0	1,791.9	1,761.3	1,742.1	3.9	5.0	-96.38	218.8	97.0	230.7	223.2	7.55	30.547		
1,900.0	1,890.4	1,858.4	1,835.9	4.2	5.4	-97.07	241.0	108.8	254.5	246.4	8.17	31.148		
2,000.0	1,988.9	1,955.5	1,929.7	4.5	5.9	-97.64	263.1	120.7	278.4	269.6	8.80	31.640		
2,100.0	2,087.3	2,052.6	2,023.5	4.9	6.3	-98.12	285.3	132.6	302.2	292.8	9.43	32.047		
2,200.0	2,185.8	2,149.6	2,117.2	5.2	6.8	-98.53	307.4	144.5	326.1	316.1	10.07	32.388		
2,300.0	2,284.3	2,246.7	2,211.0	5.5	7.3	-98.88	329.5	156.3	350.0	339.3	10.71	32.678		
2,400.0	2,382.8	2,343.8	2,304.8	5.9	7.7	-99.19	351.7	168.2	373.9	362.6	11.36	32.925		
2,500.0	2,481.3	2,440.9	2,398.6	6.2	8.2	-99.46	373.8	180.1	397.9	385.8	12.01	33.139		
2,600.0	2,579.7	2,538.0	2,492.3	6.6	8.7	-99.70	396.0	192.0	421.8	409.1	12.66	33.324		
2,700.0	2,678.2	2,635.0	2,586.1	6.9	9.1	-99.92	418.1	203.8	445.7	432.4	13.31	33.487		
2,800.0	2,776.7	2,732.1	2,679.9	7.2	9.6	-100.11	440.3	215.7	469.7	455.7	13.96	33.631		
2,900.0	2,875.2	2,829.2	2,773.6	7.6	10.1	-100.28	462.4	227.6	493.6	479.0	14.62	33.759		

# Anticollision Report

<b>Company:</b>	EnCana Oil & Gas (USA) Inc	<b>Local Co-ordinate Reference:</b>	Well Drieth 4D-6H-I368
<b>Project:</b>	DJ Wattenberg	<b>TVD Reference:</b>	WELL @ 5123.0ft (Original Well Elev)
<b>Reference Site:</b>	S6-T3N-R68W (Zisch/Drieth)	<b>MD Reference:</b>	WELL @ 5123.0ft (Original Well Elev)
<b>Site Error:</b>	0.0ft	<b>North Reference:</b>	True
<b>Reference Well:</b>	Drieth 4D-6H-I368	<b>Survey Calculation Method:</b>	Minimum Curvature
<b>Well Error:</b>	0.0ft	<b>Output errors are at</b>	2.00 sigma
<b>Reference Wellbore</b>	Hz	<b>Database:</b>	USA EDM 5000 Multi Users DB
<b>Reference Design:</b>	Plan #1	<b>Offset TVD Reference:</b>	Offset Datum

Offset Design S6-T3N-R68W (Zisch/Drieth) - Drieth 4B-6H-I368 - Hz - Plan #1													Offset Site Error:	0.0 ft
Survey Program: 0-MWD													Offset Well Error:	0.0 ft
Reference		Offset		Semi Major Axis		Highside Toolface (°)	Distance		Total Uncertainty Axis	Separation Factor	Warning			
Measured Depth (ft)	Vertical Depth (ft)	Measured Depth (ft)	Vertical Depth (ft)	Reference (ft)	Offset (ft)		Offset Wellbore Centre +N/-S (ft)	+E/-W (ft)						
0.0	0.0	0.0	0.0	0.0	0.0	-7.28	21.9	-2.8	22.0					
100.0	100.0	100.0	100.0	0.2	0.2	-7.28	21.9	-2.8	22.0	21.7	0.30	72.557		
200.0	200.0	200.0	200.0	0.3	0.3	-7.28	21.9	-2.8	22.0	21.4	0.65	33.757		
300.0	300.0	300.0	300.0	0.5	0.5	-7.28	21.9	-2.8	22.0	21.0	1.00	21.995 CC, ES		
400.0	400.0	399.7	399.7	0.7	0.7	-5.69	22.5	-2.2	22.6	21.3	1.35	16.764		
500.0	500.0	499.4	499.3	0.8	0.9	-1.41	24.5	-0.6	24.6	22.9	1.70	14.437		
600.0	600.0	598.9	598.8	1.0	1.0	4.36	27.9	2.1	28.0	26.0	2.06	13.616 SF		
700.0	700.0	698.3	698.0	1.2	1.2	-83.52	32.6	5.9	33.1	30.7	2.41	13.756		
800.0	800.0	797.6	796.9	1.4	1.4	-81.53	38.6	10.8	39.6	36.8	2.76	14.321		
900.0	899.9	896.6	895.5	1.6	1.7	-81.21	45.9	16.8	47.3	44.2	3.13	15.123		
1,000.0	999.7	995.4	993.7	1.7	1.9	-81.87	54.6	23.8	56.3	52.8	3.51	16.050		
1,100.0	1,099.4	1,093.9	1,091.4	2.0	2.2	-83.08	64.5	31.8	66.6	62.7	3.91	17.032		
1,200.0	1,198.9	1,192.2	1,188.6	2.2	2.5	-84.54	75.7	40.9	78.2	73.9	4.34	18.022		
1,300.0	1,298.3	1,290.1	1,285.2	2.4	2.8	-86.10	88.1	51.0	91.2	86.4	4.80	18.987		
1,400.0	1,397.4	1,387.6	1,381.1	2.7	3.1	-87.64	101.7	62.1	105.5	100.2	5.30	19.903		
1,500.0	1,496.3	1,484.8	1,476.4	2.9	3.5	-89.12	116.6	74.2	121.2	115.4	5.84	20.754		
1,600.0	1,594.9	1,583.0	1,572.5	3.2	3.8	-90.68	132.4	87.1	137.9	131.5	6.43	21.462		
1,700.0	1,693.4	1,681.5	1,668.8	3.6	4.2	-92.37	148.3	100.0	154.7	147.7	7.03	21.992		
1,800.0	1,791.9	1,780.0	1,765.1	3.9	4.6	-93.72	164.2	112.9	171.6	164.0	7.66	22.416		
1,900.0	1,890.4	1,878.5	1,861.5	4.2	5.0	-94.83	180.1	125.8	188.6	180.3	8.29	22.761		
2,000.0	1,988.9	1,977.0	1,957.8	4.5	5.4	-95.76	196.0	138.7	205.7	196.7	8.92	23.044		
2,100.0	2,087.3	2,075.5	2,054.1	4.9	5.7	-96.54	211.9	151.6	222.8	213.2	9.57	23.281		
2,200.0	2,185.8	2,174.0	2,150.5	5.2	6.1	-97.22	227.8	164.5	239.9	229.7	10.22	23.482		
2,300.0	2,284.3	2,272.4	2,246.8	5.5	6.5	-97.80	243.7	177.5	257.0	246.2	10.87	23.653		
2,400.0	2,382.8	2,370.9	2,343.1	5.9	6.9	-98.31	259.5	190.4	274.2	262.7	11.52	23.801		
2,500.0	2,481.3	2,469.4	2,439.5	6.2	7.3	-98.76	275.4	203.3	291.4	279.2	12.18	23.929		
2,600.0	2,579.7	2,567.9	2,535.8	6.6	7.7	-99.16	291.3	216.2	308.6	295.8	12.84	24.042		
2,700.0	2,678.2	2,666.4	2,632.2	6.9	8.1	-99.52	307.2	229.1	325.8	312.3	13.50	24.141		
2,800.0	2,776.7	2,764.9	2,728.5	7.2	8.5	-99.84	323.1	242.0	343.1	328.9	14.16	24.229		
2,900.0	2,875.2	2,863.4	2,824.8	7.6	8.9	-100.13	339.0	254.9	360.3	345.5	14.82	24.308		
3,000.0	2,973.7	2,961.9	2,921.2	7.9	9.3	-100.39	354.9	267.9	377.6	362.1	15.49	24.379		
3,100.0	3,072.1	3,060.3	3,017.5	8.3	9.7	-100.64	370.8	280.8	394.8	378.7	16.15	24.444		
3,200.0	3,170.6	3,158.8	3,113.8	8.6	10.1	-100.86	386.7	293.7	412.1	395.3	16.82	24.502		
3,300.0	3,269.1	3,257.3	3,210.2	9.0	10.5	-101.06	402.6	306.6	429.4	411.9	17.49	24.555		
3,400.0	3,367.6	3,355.8	3,306.5	9.3	10.9	-101.25	418.5	319.5	446.6	428.5	18.15	24.603		
3,500.0	3,466.1	3,454.3	3,402.8	9.7	11.3	-101.42	434.3	332.4	463.9	445.1	18.82	24.648		
3,600.0	3,564.5	3,552.8	3,499.2	10.0	11.7	-101.58	450.2	345.3	481.2	461.7	19.49	24.689		
3,700.0	3,663.2	3,651.3	3,595.5	10.4	12.1	-101.80	466.1	358.3	498.3	478.2	20.15	24.735		

# Anticollision Report

<b>Company:</b>	EnCana Oil & Gas (USA) Inc	<b>Local Co-ordinate Reference:</b>	Well Drieth 4D-6H-I368
<b>Project:</b>	DJ Wattenberg	<b>TVD Reference:</b>	WELL @ 5123.0ft (Original Well Elev)
<b>Reference Site:</b>	S6-T3N-R68W (Zisch/Drieth)	<b>MD Reference:</b>	WELL @ 5123.0ft (Original Well Elev)
<b>Site Error:</b>	0.0ft	<b>North Reference:</b>	True
<b>Reference Well:</b>	Drieth 4D-6H-I368	<b>Survey Calculation Method:</b>	Minimum Curvature
<b>Well Error:</b>	0.0ft	<b>Output errors are at</b>	2.00 sigma
<b>Reference Wellbore</b>	Hz	<b>Database:</b>	USA EDM 5000 Multi Users DB
<b>Reference Design:</b>	Plan #1	<b>Offset TVD Reference:</b>	Offset Datum

Offset Design S6-T3N-R68W (Zisch/Drieth) - Drieth 4C-6H-I368 - Hz - Plan #1													Offset Site Error:	0.0 ft
Survey Program: 0-MWD													Offset Well Error:	0.0 ft
Reference		Offset		Semi Major Axis		Distance		Total		Separation		Warning		
Measured Depth (ft)	Vertical Depth (ft)	Measured Depth (ft)	Vertical Depth (ft)	Reference (ft)	Offset (ft)	Highside Toolface (°)	Offset Wellbore Centre +N/-S (ft)	+E/-W (ft)	Between Centres (ft)	Between Ellipses (ft)	Uncertainty Axis	Factor		
0.0	0.0	0.0	0.0	0.0	0.0	-14.33	10.9	-2.8	11.3					
100.0	100.0	100.0	100.0	0.2	0.2	-14.33	10.9	-2.8	11.3	11.0	0.30	37.141		
200.0	200.0	200.0	200.0	0.3	0.3	-14.33	10.9	-2.8	11.3	10.6	0.65	17.280		
300.0	300.0	300.0	300.0	0.5	0.5	-14.33	10.9	-2.8	11.3	10.3	1.00	11.259		
400.0	400.0	400.0	400.0	0.7	0.7	-14.33	10.9	-2.8	11.3	9.9	1.35	8.350 CC		
500.0	500.0	499.9	499.9	0.8	0.9	-10.15	11.4	-2.0	11.5	9.8	1.70	6.788 ES		
600.0	600.0	599.8	599.8	1.0	1.0	1.09	12.6	0.2	12.6	10.6	2.05	6.171		
700.0	700.0	699.6	699.5	1.2	1.2	-80.36	14.8	4.0	15.2	12.8	2.41	6.303		
800.0	800.0	799.3	799.0	1.4	1.4	-74.30	17.8	9.3	18.9	16.1	2.76	6.828		
900.0	899.9	898.9	898.3	1.6	1.6	-71.61	21.6	16.1	23.5	20.4	3.13	7.506		
1,000.0	999.7	998.4	997.3	1.7	1.8	-70.92	26.3	24.4	28.9	25.4	3.51	8.238		
1,100.0	1,099.4	1,097.8	1,096.1	2.0	2.1	-71.33	31.8	34.1	35.2	31.2	3.91	8.978		
1,200.0	1,198.9	1,197.0	1,194.5	2.2	2.3	-72.34	38.2	45.4	42.1	37.8	4.34	9.701		
1,300.0	1,298.3	1,296.1	1,292.5	2.4	2.6	-73.63	45.4	58.1	49.9	45.1	4.81	10.387		
1,400.0	1,397.4	1,395.1	1,390.1	2.7	2.9	-75.05	53.4	72.2	58.6	53.3	5.31	11.024		
1,500.0	1,496.3	1,494.6	1,488.1	2.9	3.3	-76.96	61.9	87.3	67.5	61.6	5.86	11.513		
1,600.0	1,594.9	1,594.2	1,586.1	3.2	3.6	-79.69	70.4	102.3	76.1	69.7	6.46	11.779		
1,700.0	1,693.4	1,693.7	1,684.2	3.6	3.9	-82.52	78.9	117.4	84.8	77.7	7.09	11.955		
1,800.0	1,791.9	1,793.3	1,782.2	3.9	4.2	-84.81	87.4	132.4	93.6	85.9	7.74	12.105		
1,900.0	1,890.4	1,892.8	1,880.2	4.2	4.6	-86.71	95.9	147.4	102.6	94.2	8.39	12.233		
2,000.0	1,988.9	1,992.3	1,978.3	4.5	4.9	-88.31	104.4	162.5	111.7	102.6	9.05	12.345		
2,100.0	2,087.3	2,091.9	2,076.3	4.9	5.3	-89.66	113.0	177.5	120.8	111.1	9.71	12.444		
2,200.0	2,185.8	2,191.4	2,174.3	5.2	5.6	-90.82	121.5	192.6	130.0	119.6	10.37	12.531		
2,300.0	2,284.3	2,291.0	2,272.4	5.5	5.9	-91.83	130.0	207.6	139.2	128.2	11.04	12.609		
2,400.0	2,382.8	2,390.5	2,370.4	5.9	6.3	-92.71	138.5	222.7	148.5	136.8	11.71	12.678		
2,500.0	2,481.3	2,490.1	2,468.4	6.2	6.6	-93.49	147.0	237.7	157.8	145.4	12.39	12.741		
2,600.0	2,579.7	2,589.6	2,566.5	6.6	7.0	-94.18	155.5	252.8	167.1	154.1	13.06	12.798		
2,700.0	2,678.2	2,689.2	2,664.5	6.9	7.3	-94.80	164.0	267.8	176.5	162.8	13.73	12.850		
2,800.0	2,776.7	2,788.7	2,762.5	7.2	7.7	-95.36	172.5	282.9	185.9	171.4	14.41	12.897		
2,900.0	2,875.2	2,888.2	2,860.6	7.6	8.0	-95.86	181.0	297.9	195.2	180.2	15.09	12.941		
3,000.0	2,973.7	2,987.8	2,958.6	7.9	8.4	-96.32	189.6	312.9	204.6	188.9	15.77	12.981		
3,100.0	3,072.1	3,087.3	3,056.6	8.3	8.7	-96.74	198.1	328.0	214.1	197.6	16.44	13.018		
3,200.0	3,170.6	3,186.9	3,154.7	8.6	9.0	-97.12	206.6	343.0	223.5	206.4	17.12	13.052		
3,300.0	3,269.1	3,286.4	3,252.7	9.0	9.4	-97.47	215.1	358.1	232.9	215.1	17.80	13.084		
3,400.0	3,367.6	3,386.0	3,350.7	9.3	9.7	-97.79	223.6	373.1	242.3	223.9	18.48	13.114		
3,500.0	3,466.1	3,485.5	3,448.8	9.7	10.1	-98.09	232.1	388.2	251.8	232.6	19.16	13.141		
3,600.0	3,564.5	3,585.1	3,546.8	10.0	10.4	-98.37	240.6	403.2	261.2	241.4	19.84	13.167		
3,700.0	3,663.2	3,684.6	3,644.8	10.4	10.8	-98.54	249.1	418.3	270.6	250.1	20.50	13.201		
3,800.0	3,762.1	3,784.2	3,742.9	10.7	11.1	-98.34	257.7	433.3	279.6	258.5	21.12	13.243		
3,900.0	3,861.2	3,883.8	3,841.0	10.9	11.5	-97.82	266.2	448.4	288.5	266.8	21.70	13.293		
4,000.0	3,960.6	3,985.2	3,941.0	11.2	11.8	-97.10	274.5	463.1	296.9	274.6	22.24	13.348		
4,100.0	4,060.1	4,087.1	4,041.8	11.4	12.1	-96.38	282.0	476.3	304.3	281.6	22.73	13.391		
4,200.0	4,159.8	4,189.2	4,143.0	11.6	12.4	-95.67	288.6	488.0	310.9	287.7	23.17	13.421		
4,300.0	4,259.6	4,291.5	4,244.5	11.8	12.7	-94.95	294.4	498.2	316.6	293.0	23.55	13.440		
4,400.0	4,359.5	4,393.9	4,346.5	12.0	12.9	-94.22	299.2	506.8	321.3	297.4	23.89	13.449		
4,500.0	4,459.5	4,496.4	4,448.7	12.1	13.1	-93.48	303.2	513.8	325.2	301.0	24.19	13.446		
4,600.0	4,559.5	4,599.1	4,551.2	12.2	13.3	-0.31	306.2	519.2	328.2	310.7	17.51	18.744		
4,700.0	4,659.5	4,701.9	4,653.9	12.3	13.4	0.36	308.4	523.0	330.3	312.4	17.90	18.448		
4,800.0	4,759.5	4,804.9	4,756.9	12.4	13.6	0.74	309.6	525.2	331.5	313.3	18.27	18.147		
4,900.0	4,859.5	4,907.5	4,859.5	12.6	13.7	0.84	310.0	525.8	331.9	313.3	18.60	17.839		
5,000.0	4,959.5	5,007.5	4,959.5	12.7	13.8	0.84	310.0	525.8	331.9	312.9	18.93	17.535		
5,100.0	5,059.5	5,107.5	5,059.5	12.8	13.9	0.84	310.0	525.8	331.9	312.6	19.25	17.240		

CC - Min centre to center distance or convergent point, SF - min separation factor, ES - min ellipse separation

# Anticollision Report

<b>Company:</b>	EnCana Oil & Gas (USA) Inc	<b>Local Co-ordinate Reference:</b>	Well Drieth 4D-6H-I368
<b>Project:</b>	DJ Wattenberg	<b>TVD Reference:</b>	WELL @ 5123.0ft (Original Well Elev)
<b>Reference Site:</b>	S6-T3N-R68W (Zisch/Drieth)	<b>MD Reference:</b>	WELL @ 5123.0ft (Original Well Elev)
<b>Site Error:</b>	0.0ft	<b>North Reference:</b>	True
<b>Reference Well:</b>	Drieth 4D-6H-I368	<b>Survey Calculation Method:</b>	Minimum Curvature
<b>Well Error:</b>	0.0ft	<b>Output errors are at</b>	2.00 sigma
<b>Reference Wellbore</b>	Hz	<b>Database:</b>	USA EDM 5000 Multi Users DB
<b>Reference Design:</b>	Plan #1	<b>Offset TVD Reference:</b>	Offset Datum

Offset Design S6-T3N-R68W (Zisch/Drieth) - Drieth 4C-6H-I368 - Hz - Plan #1													Offset Site Error:	0.0 ft
Survey Program: 0-MWD													Offset Well Error:	0.0 ft
Reference		Offset		Semi Major Axis		Distance		Total		Separation		Warning		
Measured Depth (ft)	Vertical Depth (ft)	Measured Depth (ft)	Vertical Depth (ft)	Reference (ft)	Offset (ft)	Highside Toolface (°)	Offset Wellbore Centre +N/-S (ft)	+E/-W (ft)	Between Centres (ft)	Between Ellipses (ft)	Uncertainty Axis			
5,200.0	5,159.5	5,207.5	5,159.5	12.9	14.0	0.84	310.0	525.8	331.9	312.3	19.57		16.954	
5,300.0	5,259.5	5,307.5	5,259.5	13.0	14.1	0.84	310.0	525.8	331.9	312.0	19.90		16.676	
5,400.0	5,359.5	5,407.5	5,359.5	13.2	14.3	0.84	310.0	525.8	331.9	311.6	20.23		16.408	
5,500.0	5,459.5	5,507.5	5,459.5	13.3	14.4	0.84	310.0	525.8	331.9	311.3	20.55		16.147	
5,600.0	5,559.5	5,607.5	5,559.5	13.4	14.5	0.84	310.0	525.8	331.9	311.0	20.88		15.894	
5,700.0	5,659.5	5,707.5	5,659.5	13.5	14.6	0.84	310.0	525.8	331.9	310.7	21.21		15.648	
5,800.0	5,759.5	5,807.5	5,759.5	13.7	14.7	0.84	310.0	525.8	331.9	310.3	21.54		15.409	
5,900.0	5,859.5	5,907.5	5,859.5	13.8	14.8	0.84	310.0	525.8	331.9	310.0	21.87		15.177	
6,000.0	5,959.5	6,007.5	5,959.5	13.9	15.0	0.84	310.0	525.8	331.9	309.7	22.20		14.952	
6,100.0	6,059.5	6,107.5	6,059.5	14.1	15.1	0.84	310.0	525.8	331.9	309.3	22.53		14.732	
6,200.0	6,159.5	6,207.5	6,159.5	14.2	15.2	0.84	310.0	525.8	331.9	309.0	22.86		14.519	
6,300.0	6,259.5	6,307.5	6,259.5	14.3	15.3	0.84	310.0	525.8	331.9	308.7	23.19		14.312	
6,360.6	6,320.1	6,368.1	6,320.1	14.4	15.4	90.91	310.0	525.8	331.9	303.0	28.83		11.513	
6,400.0	6,359.5	6,407.5	6,359.5	14.5	15.5	90.87	310.0	525.8	331.9	302.9	28.93		11.471	
6,500.0	6,459.0	6,507.0	6,459.0	14.5	15.6	92.42	310.0	525.8	332.1	303.2	28.97		11.465	
6,600.0	6,556.2	6,604.3	6,556.2	14.3	15.7	96.09	310.0	525.8	333.9	305.2	28.71		11.631	
6,700.0	6,649.4	6,706.6	6,658.3	14.0	15.7	100.99	310.0	519.6	338.7	310.6	28.10		12.052	
6,800.0	6,736.5	6,814.5	6,763.8	13.7	15.6	105.70	310.0	497.3	345.9	318.6	27.23		12.702	
6,900.0	6,816.1	6,928.2	6,869.9	13.3	15.3	110.06	310.0	457.1	354.9	328.7	26.21		13.540	
7,000.0	6,886.4	7,048.0	6,973.5	13.0	15.0	113.96	310.0	397.1	365.1	339.9	25.21		14.478	
7,100.0	6,946.2	7,174.2	7,070.1	12.9	14.5	117.31	310.0	316.1	375.3	350.8	24.45		15.347	
7,200.0	6,994.2	7,306.6	7,154.6	13.2	14.2	120.01	310.0	214.4	384.6	360.4	24.19		15.895	
7,300.0	7,029.6	7,444.5	7,221.2	13.8	14.0	121.99	310.0	93.9	392.0	367.2	24.72		15.856	
7,400.0	7,051.7	7,586.4	7,264.3	14.8	14.9	123.19	310.0	-41.0	396.6	370.4	26.21		15.136	
7,500.0	7,059.9	7,730.4	7,280.0	16.1	16.8	123.55	310.0	-184.0	398.1	369.5	28.63		13.904	
7,548.6	7,060.4	7,781.0	7,280.0	16.9	17.6	123.50	310.0	-234.6	397.9	367.9	29.92		13.299	
7,600.0	7,060.0	7,832.4	7,280.0	17.7	18.4	123.55	310.0	-285.9	398.1	366.8	31.27		12.731	
7,700.0	7,060.0	7,932.4	7,280.0	19.5	20.2	123.55	310.0	-385.9	398.1	363.9	34.18		11.647	
7,800.0	7,060.0	8,032.4	7,280.0	21.4	22.1	123.55	310.0	-485.9	398.1	360.8	37.32		10.667	
7,900.0	7,060.0	8,132.4	7,280.0	23.4	24.1	123.55	310.0	-585.9	398.1	357.4	40.63		9.796	
8,000.0	7,060.0	8,232.4	7,280.0	25.5	26.1	123.55	310.0	-685.9	398.1	354.0	44.09		9.029	
8,100.0	7,060.0	8,332.4	7,280.0	27.7	28.3	123.55	310.0	-785.9	398.1	350.4	47.65		8.353	
8,200.0	7,060.0	8,432.4	7,280.0	29.9	30.5	123.55	310.0	-885.9	398.1	346.8	51.30		7.759	
8,300.0	7,060.0	8,532.4	7,280.0	32.1	32.7	123.55	310.0	-985.9	398.0	343.0	55.02		7.235	
8,400.0	7,060.0	8,632.4	7,280.0	34.4	34.9	123.55	310.0	-1,085.9	398.0	339.3	58.79		6.771	
8,500.0	7,060.0	8,732.4	7,280.0	36.7	37.2	123.55	310.0	-1,185.9	398.0	335.4	62.60		6.358	
8,600.0	7,060.0	8,832.4	7,280.0	39.1	39.5	123.55	310.0	-1,285.9	398.0	331.6	66.46		5.989	
8,700.0	7,060.0	8,932.4	7,280.0	41.4	41.9	123.55	310.0	-1,385.9	398.0	327.7	70.34		5.658	
8,800.0	7,060.0	9,032.4	7,280.0	43.8	44.2	123.56	310.0	-1,485.9	398.0	323.8	74.25		5.360	
8,900.0	7,060.0	9,132.4	7,280.0	46.1	46.6	123.56	310.0	-1,585.9	398.0	319.8	78.19		5.090	
9,000.0	7,060.0	9,232.4	7,280.0	48.5	48.9	123.56	310.0	-1,685.9	398.0	315.9	82.14		4.845	
9,100.0	7,060.0	9,332.4	7,280.0	50.9	51.3	123.56	310.0	-1,785.9	398.0	311.9	86.11		4.622	
9,200.0	7,060.0	9,432.4	7,280.0	53.3	53.7	123.56	310.0	-1,885.9	398.0	307.9	90.09		4.418	
9,300.0	7,060.0	9,532.4	7,280.0	55.7	56.1	123.56	310.0	-1,985.9	398.0	303.9	94.09		4.230	
9,400.0	7,060.0	9,632.4	7,280.0	58.1	58.5	123.56	310.0	-2,085.9	398.0	299.9	98.10		4.057	
9,500.0	7,060.0	9,732.4	7,280.0	60.5	60.9	123.56	310.0	-2,185.9	398.0	295.9	102.12		3.897	
9,600.0	7,060.0	9,832.4	7,280.0	62.9	63.3	123.56	310.0	-2,285.9	398.0	291.8	106.14		3.749	
9,700.0	7,060.0	9,932.4	7,280.0	65.4	65.7	123.56	310.0	-2,385.9	398.0	287.8	110.17		3.612	
9,800.0	7,060.0	10,032.4	7,280.0	67.8	68.1	123.56	310.0	-2,485.9	398.0	283.7	114.21		3.484	
9,900.0	7,060.0	10,132.4	7,280.0	70.2	70.6	123.56	310.0	-2,585.9	398.0	279.7	118.26		3.365	
10,000.0	7,060.0	10,232.4	7,280.0	72.7	73.0	123.56	310.0	-2,685.9	397.9	275.6	122.31		3.254	
10,100.0	7,060.0	10,332.4	7,280.0	75.1	75.4	123.56	310.0	-2,785.9	397.9	271.6	126.37		3.149	

CC - Min centre to center distance or convergent point, SF - min separation factor, ES - min ellipse separation

# Anticollision Report

<b>Company:</b>	EnCana Oil & Gas (USA) Inc	<b>Local Co-ordinate Reference:</b>	Well Drieth 4D-6H-I368
<b>Project:</b>	DJ Wattenberg	<b>TVD Reference:</b>	WELL @ 5123.0ft (Original Well Elev)
<b>Reference Site:</b>	S6-T3N-R68W (Zisch/Drieth)	<b>MD Reference:</b>	WELL @ 5123.0ft (Original Well Elev)
<b>Site Error:</b>	0.0ft	<b>North Reference:</b>	True
<b>Reference Well:</b>	Drieth 4D-6H-I368	<b>Survey Calculation Method:</b>	Minimum Curvature
<b>Well Error:</b>	0.0ft	<b>Output errors are at</b>	2.00 sigma
<b>Reference Wellbore</b>	Hz	<b>Database:</b>	USA EDM 5000 Multi Users DB
<b>Reference Design:</b>	Plan #1	<b>Offset TVD Reference:</b>	Offset Datum

Offset Design S6-T3N-R68W (Zisch/Drieth) - Drieth 4C-6H-I368 - Hz - Plan #1												Offset Site Error: 0.0 ft	
Survey Program: 0-MWD												Offset Well Error: 0.0 ft	
Reference		Offset		Semi Major Axis			Distance						Warning
Measured Depth (ft)	Vertical Depth (ft)	Measured Depth (ft)	Vertical Depth (ft)	Reference (ft)	Offset (ft)	Highside Toolface (°)	Offset Wellbore Centre +N/-S (ft)	+E/-W (ft)	Between Centres (ft)	Between Ellipses (ft)	Total Uncertainty Axis	Separation Factor	
10,200.0	7,060.0	10,432.4	7,280.0	77.5	77.9	123.56	310.0	-2,885.9	397.9	267.5	130.43	3.051	
10,300.0	7,060.0	10,532.4	7,280.0	80.0	80.3	123.56	310.0	-2,985.9	397.9	263.4	134.49	2.959	
10,400.0	7,060.0	10,632.4	7,280.0	82.4	82.7	123.56	310.0	-3,085.9	397.9	259.4	138.56	2.872	
10,500.0	7,060.0	10,732.4	7,280.0	84.9	85.2	123.56	310.0	-3,185.9	397.9	255.3	142.63	2.790	
10,600.0	7,060.0	10,832.4	7,280.0	87.3	87.6	123.57	310.0	-3,285.9	397.9	251.2	146.71	2.712	
10,700.0	7,060.0	10,932.4	7,280.0	89.8	90.1	123.57	310.0	-3,385.9	397.9	247.1	150.79	2.639	
10,800.0	7,060.0	11,032.4	7,280.0	92.2	92.5	123.57	310.0	-3,485.9	397.9	243.0	154.87	2.569	
10,900.0	7,060.0	11,132.4	7,280.0	94.7	95.0	123.57	310.0	-3,585.9	397.9	238.9	158.95	2.503	
11,000.0	7,060.0	11,232.4	7,280.0	97.1	97.4	123.57	310.0	-3,685.9	397.9	234.9	163.04	2.440	
11,100.0	7,060.0	11,332.4	7,280.0	99.6	99.9	123.57	310.0	-3,785.9	397.9	230.8	167.12	2.381	
11,200.0	7,060.0	11,432.4	7,280.0	102.0	102.3	123.57	310.0	-3,885.9	397.9	226.7	171.21	2.324	
11,300.0	7,060.0	11,532.4	7,280.0	104.5	104.8	123.57	310.0	-3,985.9	397.9	222.6	175.30	2.270	
11,400.0	7,060.0	11,632.4	7,280.0	106.9	107.2	123.57	310.0	-4,085.9	397.9	218.5	179.40	2.218	
11,458.5	7,060.0	11,690.9	7,280.0	108.4	108.6	123.57	310.0	-4,144.4	397.9	216.1	181.79	2.189	
11,470.0	7,060.0	11,702.4	7,280.0	108.6	108.9	123.57	310.0	-4,155.9	397.9	215.6	182.26	2.183 SF	

# Anticollision Report

<b>Company:</b>	EnCana Oil & Gas (USA) Inc	<b>Local Co-ordinate Reference:</b>	Well Drieth 4D-6H-I368
<b>Project:</b>	DJ Wattenberg	<b>TVD Reference:</b>	WELL @ 5123.0ft (Original Well Elev)
<b>Reference Site:</b>	S6-T3N-R68W (Zisch/Drieth)	<b>MD Reference:</b>	WELL @ 5123.0ft (Original Well Elev)
<b>Site Error:</b>	0.0ft	<b>North Reference:</b>	True
<b>Reference Well:</b>	Drieth 4D-6H-I368	<b>Survey Calculation Method:</b>	Minimum Curvature
<b>Well Error:</b>	0.0ft	<b>Output errors are at</b>	2.00 sigma
<b>Reference Wellbore</b>	Hz	<b>Database:</b>	USA EDM 5000 Multi Users DB
<b>Reference Design:</b>	Plan #1	<b>Offset TVD Reference:</b>	Offset Datum

Offset Design S6-T3N-R68W (Zisch/Drieth) - Drieth 4E-6H-I368 - Hz - Plan #1													Offset Site Error:	0.0 ft
Survey Program: O-MWD													Offset Well Error:	0.0 ft
Reference		Offset		Semi Major Axis		Distance		Total		Separation		Warning		
Measured Depth (ft)	Vertical Depth (ft)	Measured Depth (ft)	Vertical Depth (ft)	Reference (ft)	Offset (ft)	Highside Toolface (°)	Offset Wellbore Centre +N/-S (ft)	+E/-W (ft)	Between Centres (ft)	Between Ellipses (ft)	Uncertainty Axis			
0.0	0.0	0.0	0.0	0.0	0.0	-180.00	-7.3	0.0	7.3					
100.0	100.0	100.0	100.0	0.2	0.2	-180.00	-7.3	0.0	7.3	7.0	0.30	23.991		
200.0	200.0	200.0	200.0	0.3	0.3	-180.00	-7.3	0.0	7.3	6.6	0.65	11.162		
300.0	300.0	300.0	300.0	0.5	0.5	-180.00	-7.3	0.0	7.3	6.3	1.00	7.273		
400.0	400.0	400.0	400.0	0.7	0.7	-180.00	-7.3	0.0	7.3	5.9	1.35	5.393 CC, ES		
500.0	500.0	499.9	499.9	0.8	0.9	174.75	-7.8	0.7	7.8	6.1	1.70	4.598		
600.0	600.0	599.8	599.7	1.0	1.0	162.86	-9.3	2.9	9.7	7.7	2.05	4.732		
700.0	700.0	699.5	699.4	1.2	1.2	62.19	-11.8	6.4	13.0	10.6	2.40	5.406		
800.0	800.0	799.2	798.9	1.4	1.4	59.76	-15.2	11.4	17.1	14.3	2.76	6.194		
900.0	899.9	898.8	898.2	1.6	1.6	60.16	-19.7	17.8	21.8	18.7	3.12	7.003		
1,000.0	999.7	998.3	997.2	1.7	1.8	61.85	-25.1	25.6	27.3	23.8	3.49	7.810		
1,100.0	1,099.4	1,097.6	1,095.9	2.0	2.1	64.11	-31.5	34.8	33.4	29.5	3.89	8.602		
1,200.0	1,198.9	1,196.9	1,194.3	2.2	2.3	66.54	-38.9	45.4	40.4	36.1	4.31	9.367		
1,300.0	1,298.3	1,295.9	1,292.3	2.4	2.6	68.94	-47.2	57.4	48.1	43.3	4.77	10.092		
1,400.0	1,397.4	1,394.8	1,389.8	2.7	2.9	71.22	-56.5	70.7	56.7	51.4	5.26	10.766		
1,500.0	1,496.3	1,493.5	1,486.9	2.9	3.3	73.34	-66.7	85.4	66.1	60.3	5.81	11.382		
1,600.0	1,594.9	1,592.1	1,583.5	3.2	3.6	75.28	-77.8	101.5	76.4	70.0	6.40	11.935		
1,700.0	1,693.4	1,691.4	1,680.6	3.6	4.0	76.95	-89.6	118.4	87.3	80.3	7.02	12.430		
1,800.0	1,791.9	1,790.7	1,777.8	3.9	4.4	78.24	-101.4	135.4	98.3	90.6	7.66	12.827		
1,900.0	1,890.4	1,890.1	1,875.0	4.2	4.8	79.28	-113.2	152.3	109.2	100.9	8.31	13.151		
2,000.0	1,988.9	1,989.5	1,972.2	4.5	5.1	80.12	-125.0	169.3	120.3	111.3	8.96	13.418		
2,100.0	2,087.3	2,088.9	2,069.4	4.9	5.5	80.83	-136.8	186.3	131.3	121.7	9.62	13.642		
2,200.0	2,185.8	2,188.3	2,166.6	5.2	5.9	81.42	-148.5	203.2	142.4	132.1	10.29	13.831		
2,300.0	2,284.3	2,287.6	2,263.8	5.5	6.3	81.93	-160.3	220.2	153.4	142.5	10.97	13.992		
2,400.0	2,382.8	2,387.0	2,361.1	5.9	6.7	82.37	-172.1	237.2	164.5	152.9	11.64	14.131		
2,500.0	2,481.3	2,486.4	2,458.3	6.2	7.1	82.76	-183.9	254.1	175.6	163.3	12.32	14.252		
2,600.0	2,579.7	2,585.8	2,555.5	6.6	7.5	83.09	-195.7	271.1	186.7	173.7	13.00	14.358		
2,700.0	2,678.2	2,685.1	2,652.7	6.9	7.9	83.40	-207.5	288.1	197.8	184.1	13.69	14.452		
2,800.0	2,776.7	2,784.5	2,749.9	7.2	8.3	83.66	-219.3	305.0	208.9	194.5	14.37	14.535		
2,900.0	2,875.2	2,883.9	2,847.1	7.6	8.7	83.91	-231.1	322.0	220.0	204.9	15.06	14.609		
3,000.0	2,973.7	2,983.3	2,944.3	7.9	9.1	84.12	-242.9	339.0	231.1	215.4	15.75	14.676		
3,100.0	3,072.1	3,082.6	3,041.5	8.3	9.5	84.32	-254.7	355.9	242.2	225.8	16.44	14.736		
3,200.0	3,170.6	3,182.0	3,138.7	8.6	9.9	84.50	-266.5	372.9	253.3	236.2	17.13	14.791		
3,300.0	3,269.1	3,281.4	3,235.9	9.0	10.3	84.67	-278.3	389.9	264.5	246.6	17.82	14.840		
3,400.0	3,367.6	3,380.8	3,333.1	9.3	10.7	84.82	-290.0	406.8	275.6	257.1	18.51	14.886		
3,500.0	3,466.1	3,480.2	3,430.3	9.7	11.1	84.96	-301.8	423.8	286.7	267.5	19.21	14.927		
3,600.0	3,564.5	3,582.4	3,530.5	10.0	11.5	85.21	-313.6	440.7	297.4	277.5	19.90	14.942		
3,700.0	3,663.2	3,685.1	3,631.5	10.4	11.8	85.65	-324.3	456.1	307.1	286.5	20.57	14.927		
3,800.0	3,762.1	3,788.0	3,732.9	10.7	12.2	86.00	-334.0	470.1	315.9	294.7	21.19	14.905		
3,900.0	3,861.2	3,891.1	3,834.9	10.9	12.5	86.28	-342.7	482.6	323.8	302.0	21.77	14.876		
4,000.0	3,960.6	3,994.3	3,937.2	11.2	12.8	86.48	-350.4	493.7	330.7	308.4	22.29	14.839		
4,100.0	4,060.1	4,097.6	4,039.9	11.4	13.0	86.62	-357.0	503.2	336.7	314.0	22.76	14.795		
4,200.0	4,159.8	4,201.1	4,142.8	11.6	13.3	86.71	-362.6	511.2	341.8	318.6	23.18	14.744		
4,300.0	4,259.6	4,304.6	4,246.1	11.8	13.5	86.73	-367.1	517.7	345.9	322.3	23.55	14.684		
4,400.0	4,359.5	4,408.2	4,349.5	12.0	13.6	86.70	-370.5	522.6	349.0	325.1	23.88	14.616		
4,500.0	4,459.5	4,511.9	4,453.1	12.1	13.8	86.61	-372.9	526.0	351.2	327.0	24.16	14.538		
4,600.0	4,559.5	4,615.6	4,556.8	12.2	13.9	178.87	-374.2	527.9	352.4	334.0	18.42	19.128		
4,700.0	4,659.5	4,718.3	4,659.5	12.3	14.0	178.80	-374.5	528.3	352.7	334.0	18.75	18.816		
4,800.0	4,759.5	4,818.3	4,759.5	12.4	14.1	178.80	-374.5	528.3	352.7	333.6	19.06	18.509		
4,900.0	4,859.5	4,918.3	4,859.5	12.6	14.2	178.80	-374.5	528.3	352.7	333.3	19.37	18.211		
5,000.0	4,959.5	5,018.3	4,959.5	12.7	14.3	178.80	-374.5	528.3	352.7	333.0	19.68	17.921		
5,100.0	5,059.5	5,118.3	5,059.5	12.8	14.4	178.80	-374.5	528.3	352.7	332.7	19.99	17.640		

CC - Min centre to center distance or convergent point, SF - min separation factor, ES - min ellipse separation

# Anticollision Report

<b>Company:</b>	EnCana Oil & Gas (USA) Inc	<b>Local Co-ordinate Reference:</b>	Well Drieth 4D-6H-I368
<b>Project:</b>	DJ Wattenberg	<b>TVD Reference:</b>	WELL @ 5123.0ft (Original Well Elev)
<b>Reference Site:</b>	S6-T3N-R68W (Zisch/Drieth)	<b>MD Reference:</b>	WELL @ 5123.0ft (Original Well Elev)
<b>Site Error:</b>	0.0ft	<b>North Reference:</b>	True
<b>Reference Well:</b>	Drieth 4D-6H-I368	<b>Survey Calculation Method:</b>	Minimum Curvature
<b>Well Error:</b>	0.0ft	<b>Output errors are at</b>	2.00 sigma
<b>Reference Wellbore</b>	Hz	<b>Database:</b>	USA EDM 5000 Multi Users DB
<b>Reference Design:</b>	Plan #1	<b>Offset TVD Reference:</b>	Offset Datum

Offset Design S6-T3N-R68W (Zisch/Drieth) - Drieth 4E-6H-I368 - Hz - Plan #1													Offset Site Error:	0.0 ft
Survey Program: 0-MWD													Offset Well Error:	0.0 ft
Reference		Offset		Semi Major Axis			Distance				Total Uncertainty Axis	Separation Factor	Warning	
Measured Depth (ft)	Vertical Depth (ft)	Measured Depth (ft)	Vertical Depth (ft)	Reference (ft)	Offset (ft)	Highside Toolface (°)	Offset Wellbore Centre +N/-S (ft)	+E/-W (ft)	Between Centres (ft)	Between Ellipses (ft)				
5,200.0	5,159.5	5,218.3	5,159.5	12.9	14.5	178.80	-374.5	528.3	352.7	332.4	20.31	17.366		
5,300.0	5,259.5	5,318.3	5,259.5	13.0	14.7	178.80	-374.5	528.3	352.7	332.1	20.63	17.101		
5,400.0	5,359.5	5,418.3	5,359.5	13.2	14.8	178.80	-374.5	528.3	352.7	331.8	20.94	16.842		
5,500.0	5,459.5	5,518.3	5,459.5	13.3	14.9	178.80	-374.5	528.3	352.7	331.4	21.26	16.590		
5,600.0	5,559.5	5,618.3	5,559.5	13.4	15.0	178.80	-374.5	528.3	352.7	331.1	21.58	16.345		
5,700.0	5,659.5	5,718.3	5,659.5	13.5	15.1	178.80	-374.5	528.3	352.7	330.8	21.90	16.107		
5,800.0	5,759.5	5,818.3	5,759.5	13.7	15.2	178.80	-374.5	528.3	352.7	330.5	22.22	15.875		
5,900.0	5,859.5	5,918.3	5,859.5	13.8	15.3	178.80	-374.5	528.3	352.7	330.2	22.54	15.649		
6,000.0	5,959.5	6,018.3	5,959.5	13.9	15.5	178.80	-374.5	528.3	352.7	329.8	22.86	15.429		
6,100.0	6,059.5	6,118.3	6,059.5	14.1	15.6	178.80	-374.5	528.3	352.7	329.5	23.18	15.214		
6,200.0	6,159.5	6,218.3	6,159.5	14.2	15.7	178.80	-374.5	528.3	352.7	329.2	23.51	15.005		
6,300.0	6,259.5	6,318.3	6,259.5	14.3	15.8	178.80	-374.5	528.3	352.7	328.9	23.83	14.802		
6,360.6	6,320.0	6,378.8	6,320.0	14.4	15.9	-91.27	-374.5	528.3	352.7	323.9	28.80	12.249		
6,400.0	6,359.5	6,418.3	6,359.5	14.5	15.9	-91.23	-374.5	528.3	352.7	323.8	28.90	12.203		
6,500.0	6,459.0	6,517.8	6,459.0	14.5	16.1	-92.68	-374.5	528.3	353.0	324.1	28.92	12.209		
6,600.0	6,556.2	6,615.0	6,556.2	14.3	16.2	-96.12	-374.5	528.3	354.8	326.2	28.60	12.407		
6,700.0	6,649.4	6,717.7	6,658.6	14.0	16.2	-100.73	-374.5	522.0	359.5	331.6	27.94	12.866		
6,800.0	6,736.5	6,826.1	6,764.5	13.7	16.1	-105.17	-374.5	499.6	366.5	339.5	27.06	13.543		
6,900.0	6,816.1	6,940.2	6,871.1	13.3	15.8	-109.29	-374.5	459.0	375.2	349.2	26.07	14.392		
7,000.0	6,886.4	7,060.5	6,974.9	13.0	15.4	-112.98	-374.5	398.5	384.9	359.8	25.13	15.318		
7,100.0	6,946.2	7,187.3	7,071.8	12.9	15.0	-116.15	-374.5	317.0	394.6	370.2	24.45	16.144		
7,200.0	6,994.2	7,320.2	7,156.2	13.2	14.7	-118.71	-374.5	214.6	403.4	379.1	24.29	16.611		
7,300.0	7,029.6	7,458.4	7,222.4	13.8	14.5	-120.57	-374.5	93.5	410.3	385.4	24.91	16.471		
7,400.0	7,051.7	7,600.6	7,265.0	14.8	15.2	-121.67	-374.5	-41.9	414.6	388.1	26.46	15.671		
7,500.0	7,059.9	7,744.7	7,280.0	16.1	17.0	-121.96	-374.5	-185.0	415.8	386.8	28.94	14.365		
7,541.5	7,060.4	7,787.1	7,280.0	16.8	17.6	-121.91	-374.5	-227.4	415.5	385.5	30.04	13.831		
7,600.0	7,060.0	7,845.6	7,280.0	17.7	18.6	-121.95	-374.5	-285.9	415.7	384.1	31.62	13.148		
7,700.0	7,060.0	7,945.6	7,280.0	19.5	20.3	-121.95	-374.5	-385.9	415.7	381.2	34.59	12.020		
7,800.0	7,060.0	8,045.6	7,280.0	21.4	22.2	-121.95	-374.5	-485.9	415.8	378.0	37.79	11.002		
7,900.0	7,060.0	8,145.6	7,280.0	23.4	24.2	-121.95	-374.6	-585.9	415.8	374.6	41.17	10.098		
8,000.0	7,060.0	8,245.6	7,280.0	25.5	26.3	-121.95	-374.6	-685.9	415.8	371.1	44.70	9.302		
8,100.0	7,060.0	8,345.6	7,280.0	27.7	28.4	-121.94	-374.6	-785.9	415.8	367.5	48.33	8.603		
8,200.0	7,060.0	8,445.6	7,280.0	29.9	30.6	-121.94	-374.6	-885.9	415.8	363.8	52.05	7.988		
8,300.0	7,060.0	8,545.6	7,280.0	32.1	32.8	-121.94	-374.6	-985.9	415.8	360.0	55.84	7.447		
8,400.0	7,060.0	8,645.6	7,280.0	34.4	35.0	-121.94	-374.6	-1,085.9	415.8	356.2	59.69	6.967		
8,500.0	7,060.0	8,745.6	7,280.0	36.7	37.3	-121.94	-374.6	-1,185.9	415.9	352.3	63.58	6.541		
8,600.0	7,060.0	8,845.6	7,280.0	39.1	39.6	-121.94	-374.6	-1,285.9	415.9	348.4	67.51	6.160		
8,700.0	7,060.0	8,945.6	7,280.0	41.4	42.0	-121.94	-374.6	-1,385.9	415.9	344.4	71.47	5.819		
8,800.0	7,060.0	9,045.6	7,280.0	43.8	44.3	-121.94	-374.6	-1,485.9	415.9	340.4	75.45	5.512		
8,900.0	7,060.0	9,145.6	7,280.0	46.1	46.6	-121.94	-374.6	-1,585.9	415.9	336.4	79.46	5.234		
9,000.0	7,060.0	9,245.6	7,280.0	48.5	49.0	-121.93	-374.6	-1,685.9	415.9	332.4	83.49	4.982		
9,100.0	7,060.0	9,345.6	7,280.0	50.9	51.4	-121.93	-374.7	-1,785.9	415.9	328.4	87.54	4.752		
9,200.0	7,060.0	9,445.6	7,280.0	53.3	53.8	-121.93	-374.7	-1,885.9	415.9	324.3	91.60	4.541		
9,300.0	7,060.0	9,545.6	7,280.0	55.7	56.2	-121.93	-374.7	-1,985.9	416.0	320.3	95.67	4.348		
9,400.0	7,060.0	9,645.6	7,280.0	58.1	58.6	-121.93	-374.7	-2,085.9	416.0	316.2	99.75	4.170		
9,500.0	7,060.0	9,745.6	7,280.0	60.5	61.0	-121.93	-374.7	-2,185.9	416.0	312.1	103.85	4.006		
9,600.0	7,060.0	9,845.6	7,280.0	62.9	63.4	-121.93	-374.7	-2,285.9	416.0	308.0	107.95	3.854		
9,700.0	7,060.0	9,945.6	7,280.0	65.4	65.8	-121.93	-374.7	-2,385.9	416.0	304.0	112.06	3.712		
9,800.0	7,060.0	10,045.6	7,280.0	67.8	68.2	-121.93	-374.7	-2,485.9	416.0	299.8	116.18	3.581		
9,900.0	7,060.0	10,145.6	7,280.0	70.2	70.6	-121.92	-374.7	-2,585.9	416.0	295.7	120.30	3.458		
10,000.0	7,060.0	10,245.6	7,280.0	72.7	73.0	-121.92	-374.7	-2,685.9	416.1	291.6	124.43	3.344		
10,100.0	7,060.0	10,345.6	7,280.0	75.1	75.5	-121.92	-374.7	-2,785.9	416.1	287.5	128.57	3.236		

CC - Min centre to center distance or convergent point, SF - min separation factor, ES - min ellipse separation

# Anticollision Report

<b>Company:</b>	EnCana Oil & Gas (USA) Inc	<b>Local Co-ordinate Reference:</b>	Well Drieth 4D-6H-I368
<b>Project:</b>	DJ Wattenberg	<b>TVD Reference:</b>	WELL @ 5123.0ft (Original Well Elev)
<b>Reference Site:</b>	S6-T3N-R68W (Zisch/Drieth)	<b>MD Reference:</b>	WELL @ 5123.0ft (Original Well Elev)
<b>Site Error:</b>	0.0ft	<b>North Reference:</b>	True
<b>Reference Well:</b>	Drieth 4D-6H-I368	<b>Survey Calculation Method:</b>	Minimum Curvature
<b>Well Error:</b>	0.0ft	<b>Output errors are at</b>	2.00 sigma
<b>Reference Wellbore</b>	Hz	<b>Database:</b>	USA EDM 5000 Multi Users DB
<b>Reference Design:</b>	Plan #1	<b>Offset TVD Reference:</b>	Offset Datum

Offset Design S6-T3N-R68W (Zisch/Drieth) - Drieth 4E-6H-I368 - Hz - Plan #1													Offset Site Error:	0.0 ft
Survey Program: 0-MWD													Offset Well Error:	0.0 ft
Reference		Offset		Semi Major Axis			Distance							Warning
Measured Depth (ft)	Vertical Depth (ft)	Measured Depth (ft)	Vertical Depth (ft)	Reference (ft)	Offset (ft)	Highside Toolface (°)	Offset Wellbore Centre +N/-S (ft)	+E/-W (ft)	Between Centres (ft)	Between Ellipses (ft)	Total Uncertainty Axis	Separation Factor		
10,200.0	7,060.0	10,445.6	7,280.0	77.5	77.9	-121.92	-374.8	-2,885.9	416.1	283.4	132.71	3.135		
10,300.0	7,060.0	10,545.6	7,280.0	80.0	80.3	-121.92	-374.8	-2,985.9	416.1	279.2	136.85	3.041		
10,400.0	7,060.0	10,645.6	7,280.0	82.4	82.8	-121.92	-374.8	-3,085.9	416.1	275.1	141.00	2.951		
10,500.0	7,060.0	10,745.6	7,280.0	84.9	85.2	-121.92	-374.8	-3,185.9	416.1	271.0	145.15	2.867		
10,600.0	7,060.0	10,845.6	7,280.0	87.3	87.7	-121.92	-374.8	-3,285.9	416.1	266.8	149.30	2.787		
10,700.0	7,060.0	10,945.6	7,280.0	89.8	90.1	-121.92	-374.8	-3,385.9	416.1	262.7	153.46	2.712		
10,800.0	7,060.0	11,045.6	7,280.0	92.2	92.5	-121.91	-374.8	-3,485.9	416.2	258.5	157.62	2.640		
10,900.0	7,060.0	11,145.6	7,280.0	94.7	95.0	-121.91	-374.8	-3,585.9	416.2	254.4	161.78	2.572		
11,000.0	7,060.0	11,245.6	7,280.0	97.1	97.4	-121.91	-374.8	-3,685.9	416.2	250.2	165.95	2.508		
11,100.0	7,060.0	11,345.6	7,280.0	99.6	99.9	-121.91	-374.8	-3,785.9	416.2	246.1	170.11	2.447		
11,200.0	7,060.0	11,445.6	7,280.0	102.0	102.3	-121.91	-374.8	-3,885.9	416.2	241.9	174.28	2.388		
11,300.0	7,060.0	11,545.6	7,280.0	104.5	104.8	-121.91	-374.8	-3,985.9	416.2	237.8	178.45	2.332		
11,400.0	7,060.0	11,645.6	7,280.0	106.9	107.2	-121.91	-374.9	-4,085.9	416.2	233.6	182.63	2.279		
11,470.0	7,060.0	11,715.6	7,280.0	108.6	109.0	-121.91	-374.9	-4,155.9	416.2	230.7	185.55	2.243 SF		



# Anticollision Report

<b>Company:</b>	EnCana Oil & Gas (USA) Inc	<b>Local Co-ordinate Reference:</b>	Well Drieth 4D-6H-I368
<b>Project:</b>	DJ Wattenberg	<b>TVD Reference:</b>	WELL @ 5123.0ft (Original Well Elev)
<b>Reference Site:</b>	S6-T3N-R68W (Zisch/Drieth)	<b>MD Reference:</b>	WELL @ 5123.0ft (Original Well Elev)
<b>Site Error:</b>	0.0ft	<b>North Reference:</b>	True
<b>Reference Well:</b>	Drieth 4D-6H-I368	<b>Survey Calculation Method:</b>	Minimum Curvature
<b>Well Error:</b>	0.0ft	<b>Output errors are at</b>	2.00 sigma
<b>Reference Wellbore</b>	Hz	<b>Database:</b>	USA EDM 5000 Multi Users DB
<b>Reference Design:</b>	Plan #1	<b>Offset TVD Reference:</b>	Offset Datum

Offset Design S6-T3N-R68W (Zisch/Drieth) - Drieth 4F-6H-I368 - Hz - Plan #1													Offset Site Error:	0.0 ft
Survey Program: 0-MWD													Offset Well Error:	0.0 ft
Reference		Offset		Semi Major Axis		Distance		Total		Separation		Warning		
Measured Depth (ft)	Vertical Depth (ft)	Measured Depth (ft)	Vertical Depth (ft)	Reference (ft)	Offset (ft)	Highside Toolface (°)	Offset Wellbore Centre +N/-S (ft)	+E/-W (ft)	Between Centres (ft)	Between Ellipses (ft)	Uncertainty Axis			
0.0	0.0	1.0	1.0	0.0	0.0	-180.00	-18.2	0.0	18.2					
100.0	100.0	101.0	101.0	0.2	0.2	-180.00	-18.2	0.0	18.2	17.9	0.31	59.635		
200.0	200.0	201.0	201.0	0.3	0.3	-180.00	-18.2	0.0	18.2	17.6	0.65	27.829		
266.3	266.3	267.3	267.3	0.4	0.4	-180.00	-18.2	0.0	18.2	17.3	0.89	20.557 CC		
300.0	300.0	301.0	301.0	0.5	0.5	180.00	-18.2	0.0	18.2	17.2	1.00	18.150 ES		
400.0	400.0	400.7	400.7	0.7	0.7	178.39	-18.9	0.5	18.9	17.6	1.35	13.996		
500.0	500.0	500.4	500.4	0.8	0.9	174.28	-21.0	2.1	21.1	19.4	1.70	12.398		
600.0	600.0	600.0	599.9	1.0	1.0	169.10	-24.5	4.7	25.0	22.9	2.06	12.106 SF		
700.0	700.0	699.4	699.0	1.2	1.2	73.22	-29.3	8.4	30.3	27.9	2.40	12.612		
800.0	800.0	798.6	798.0	1.4	1.4	72.39	-35.6	13.0	36.8	34.0	2.76	13.339		
900.0	899.9	897.7	896.6	1.6	1.7	73.11	-43.1	18.7	44.4	41.2	3.12	14.211		
1,000.0	999.7	996.5	994.8	1.7	1.9	74.66	-52.0	25.4	53.0	49.5	3.50	15.158		
1,100.0	1,099.4	1,095.1	1,092.6	2.0	2.2	76.61	-62.3	33.1	62.9	59.0	3.90	16.135		
1,200.0	1,198.9	1,193.4	1,189.8	2.2	2.5	78.70	-73.8	41.7	73.9	69.6	4.32	17.106		
1,300.0	1,298.3	1,291.4	1,286.5	2.4	2.8	80.77	-86.6	51.4	86.2	81.5	4.78	18.044		
1,400.0	1,397.4	1,389.1	1,382.5	2.7	3.1	82.75	-100.7	62.0	99.9	94.6	5.28	18.928		
1,500.0	1,496.3	1,486.4	1,477.9	2.9	3.5	84.60	-116.1	73.5	114.8	109.0	5.82	19.744		
1,600.0	1,594.9	1,583.3	1,572.6	3.2	3.9	86.29	-132.7	85.9	131.1	124.7	6.40	20.486		
1,700.0	1,693.4	1,679.8	1,666.5	3.6	4.3	87.69	-150.4	99.3	148.8	141.8	7.01	21.221		
1,800.0	1,791.9	1,775.8	1,759.6	3.9	4.7	88.43	-169.4	113.5	167.8	160.2	7.64	21.978		
1,900.0	1,890.4	1,873.3	1,853.7	4.2	5.1	88.79	-189.5	128.6	187.8	179.5	8.27	22.706		
2,000.0	1,988.9	1,971.2	1,948.3	4.5	5.6	89.08	-209.8	143.8	207.8	198.9	8.91	23.310		
2,100.0	2,087.3	2,069.2	2,043.0	4.9	6.1	89.32	-230.1	159.1	227.8	218.3	9.57	23.816		
2,200.0	2,185.8	2,167.2	2,137.6	5.2	6.5	89.52	-250.3	174.3	247.8	237.6	10.22	24.244		
2,300.0	2,284.3	2,265.2	2,232.2	5.5	7.0	89.69	-270.6	189.5	267.9	257.0	10.88	24.611		
2,400.0	2,382.8	2,363.1	2,326.9	5.9	7.5	89.84	-290.9	204.7	287.9	276.3	11.55	24.928		
2,500.0	2,481.3	2,461.1	2,421.5	6.2	7.9	89.97	-311.2	220.0	307.9	295.7	12.22	25.204		
2,600.0	2,579.7	2,559.1	2,516.1	6.6	8.4	90.08	-331.4	235.2	328.0	315.1	12.89	25.447		
2,700.0	2,678.2	2,657.0	2,610.8	6.9	8.9	90.18	-351.7	250.4	348.0	334.4	13.56	25.661		
2,800.0	2,776.7	2,755.0	2,705.4	7.2	9.3	90.27	-372.0	265.6	368.0	353.8	14.24	25.851		
2,900.0	2,875.2	2,853.0	2,800.0	7.6	9.8	90.35	-392.3	280.9	388.0	373.1	14.91	26.022		
3,000.0	2,973.7	2,951.0	2,894.7	7.9	10.3	90.42	-412.6	296.1	408.1	392.5	15.59	26.175		
3,100.0	3,072.1	3,048.9	2,989.3	8.3	10.8	90.48	-432.8	311.3	428.1	411.8	16.27	26.313		
3,200.0	3,170.6	3,146.9	3,083.9	8.6	11.2	90.54	-453.1	326.5	448.1	431.2	16.95	26.439		
3,300.0	3,269.1	3,244.9	3,178.6	9.0	11.7	90.59	-473.4	341.8	468.2	450.5	17.63	26.553		
3,400.0	3,367.6	3,342.8	3,273.2	9.3	12.2	90.64	-493.7	357.0	488.2	469.9	18.31	26.658		

# Anticollision Report

<b>Company:</b>	EnCana Oil & Gas (USA) Inc	<b>Local Co-ordinate Reference:</b>	Well Drieth 4D-6H-I368
<b>Project:</b>	DJ Wattenberg	<b>TVD Reference:</b>	WELL @ 5123.0ft (Original Well Elev)
<b>Reference Site:</b>	S6-T3N-R68W (Zisch/Drieth)	<b>MD Reference:</b>	WELL @ 5123.0ft (Original Well Elev)
<b>Site Error:</b>	0.0ft	<b>North Reference:</b>	True
<b>Reference Well:</b>	Drieth 4D-6H-I368	<b>Survey Calculation Method:</b>	Minimum Curvature
<b>Well Error:</b>	0.0ft	<b>Output errors are at</b>	2.00 sigma
<b>Reference Wellbore</b>	Hz	<b>Database:</b>	USA EDM 5000 Multi Users DB
<b>Reference Design:</b>	Plan #1	<b>Offset TVD Reference:</b>	Offset Datum

Offset Design S6-T3N-R68W (Zisch/Drieth) - Drieth 4G-6H-I368 - Hz - Plan #1													Offset Site Error: 0.0 ft	
Survey Program: 0-MWD													Offset Well Error: 0.0 ft	
Reference		Offset		Semi Major Axis			Distance							Warning
Measured Depth (ft)	Vertical Depth (ft)	Measured Depth (ft)	Vertical Depth (ft)	Reference (ft)	Offset (ft)	Highside Toolface (°)	Offset Wellbore Centre +N/-S (ft)	+E/-W (ft)	Between Centres (ft)	Between Ellipses (ft)	Total Uncertainty Axis	Separation Factor		
0.0	0.0	1.0	1.0	0.0	0.0	-180.00	-29.1	0.0	29.1					
100.0	100.0	101.0	101.0	0.2	0.2	-180.00	-29.1	0.0	29.1	28.8	0.31	95.415		
166.3	166.3	167.3	167.3	0.3	0.3	-180.00	-29.1	0.0	29.1	28.6	0.54	54.273 CC		
200.0	200.0	201.0	201.0	0.3	0.3	180.00	-29.1	0.0	29.1	28.5	0.65	44.527 ES		
300.0	300.0	300.5	300.5	0.5	0.5	179.24	-29.9	0.4	29.9	28.9	1.00	29.830		
400.0	400.0	400.0	400.0	0.7	0.7	177.20	-32.3	1.6	32.3	31.0	1.36	23.825		
500.0	500.0	499.4	499.2	0.8	0.9	174.41	-36.1	3.5	36.3	34.6	1.72	21.170		
600.0	600.0	598.5	598.2	1.0	1.1	171.41	-41.5	6.3	42.1	40.0	2.09	20.153 SF		
700.0	700.0	697.5	696.9	1.2	1.3	77.10	-48.4	9.8	49.3	46.9	2.40	20.550		
800.0	800.0	796.3	795.2	1.4	1.5	76.87	-56.8	14.0	57.9	55.1	2.75	21.018		
900.0	899.9	894.7	893.0	1.6	1.8	77.70	-66.7	19.0	67.7	64.6	3.12	21.727		
1,000.0	999.7	992.9	990.4	1.7	2.0	79.14	-78.0	24.8	78.8	75.3	3.49	22.574		
1,100.0	1,099.4	1,090.7	1,087.1	2.0	2.3	80.89	-90.8	31.3	91.3	87.4	3.89	23.488		
1,200.0	1,198.9	1,188.1	1,183.2	2.2	2.6	82.76	-104.9	38.5	105.2	100.9	4.31	24.418		
1,300.0	1,298.3	1,285.1	1,278.6	2.4	3.0	84.65	-120.5	46.4	120.6	115.8	4.76	25.325		
1,400.0	1,397.4	1,381.6	1,373.3	2.7	3.3	86.47	-137.4	54.9	137.4	132.2	5.25	26.184		
1,500.0	1,496.3	1,477.6	1,467.1	2.9	3.7	88.19	-155.7	64.2	155.8	150.0	5.77	26.977		
1,600.0	1,594.9	1,573.1	1,560.0	3.2	4.1	89.79	-175.2	74.1	175.7	169.4	6.34	27.697		
1,700.0	1,693.4	1,668.0	1,652.0	3.6	4.5	91.23	-195.9	84.6	197.2	190.3	6.94	28.412		
1,800.0	1,791.9	1,762.4	1,743.1	3.9	5.0	92.16	-217.9	95.8	220.1	212.6	7.55	29.158		
1,900.0	1,890.4	1,858.2	1,835.2	4.2	5.5	92.75	-241.4	107.7	244.2	236.0	8.17	29.887		
2,000.0	1,988.9	1,955.2	1,928.5	4.5	5.9	93.23	-265.2	119.8	268.4	259.6	8.80	30.488		
2,100.0	2,087.3	2,052.2	2,021.7	4.9	6.4	93.63	-289.1	131.9	292.6	283.1	9.44	30.988		
2,200.0	2,185.8	2,149.2	2,115.0	5.2	6.9	93.97	-312.9	144.0	316.8	306.7	10.09	31.408		
2,300.0	2,284.3	2,246.2	2,208.2	5.5	7.4	94.26	-336.8	156.1	341.0	330.3	10.74	31.765		
2,400.0	2,382.8	2,343.2	2,301.5	5.9	7.9	94.52	-360.6	168.2	365.2	353.9	11.39	32.072		
2,500.0	2,481.3	2,440.2	2,394.7	6.2	8.4	94.74	-384.5	180.3	389.5	377.4	12.04	32.337		
2,600.0	2,579.7	2,537.2	2,488.0	6.6	8.9	94.93	-408.3	192.4	413.7	401.0	12.70	32.569		
2,700.0	2,678.2	2,634.2	2,581.2	6.9	9.4	95.11	-432.1	204.5	438.0	424.6	13.36	32.773		
2,800.0	2,776.7	2,731.2	2,674.5	7.2	9.9	95.26	-456.0	216.6	462.2	448.2	14.03	32.953		
2,900.0	2,875.2	2,828.3	2,767.7	7.6	10.4	95.40	-479.8	228.7	486.5	471.8	14.69	33.113		

## Anticollision Report

<b>Company:</b>	EnCana Oil & Gas (USA) Inc	<b>Local Co-ordinate Reference:</b>	Well Drieth 4D-6H-I368
<b>Project:</b>	DJ Wattenberg	<b>TVD Reference:</b>	WELL @ 5123.0ft (Original Well Elev)
<b>Reference Site:</b>	S6-T3N-R68W (Zisch/Drieth)	<b>MD Reference:</b>	WELL @ 5123.0ft (Original Well Elev)
<b>Site Error:</b>	0.0ft	<b>North Reference:</b>	True
<b>Reference Well:</b>	Drieth 4D-6H-I368	<b>Survey Calculation Method:</b>	Minimum Curvature
<b>Well Error:</b>	0.0ft	<b>Output errors are at</b>	2.00 sigma
<b>Reference Wellbore</b>	Hz	<b>Database:</b>	USA EDM 5000 Multi Users DB
<b>Reference Design:</b>	Plan #1	<b>Offset TVD Reference:</b>	Offset Datum

Reference Depths are relative to WELL @ 5123.0ft (Original Well Elev)

Offset Depths are relative to Offset Datum

Central Meridian is -105.500000 °

Coordinates are relative to: Drieth 4D-6H-I368

Coordinate System is US State Plane 1983, Colorado Northern Zone

Grid Convergence at Surface is: 0.30°

