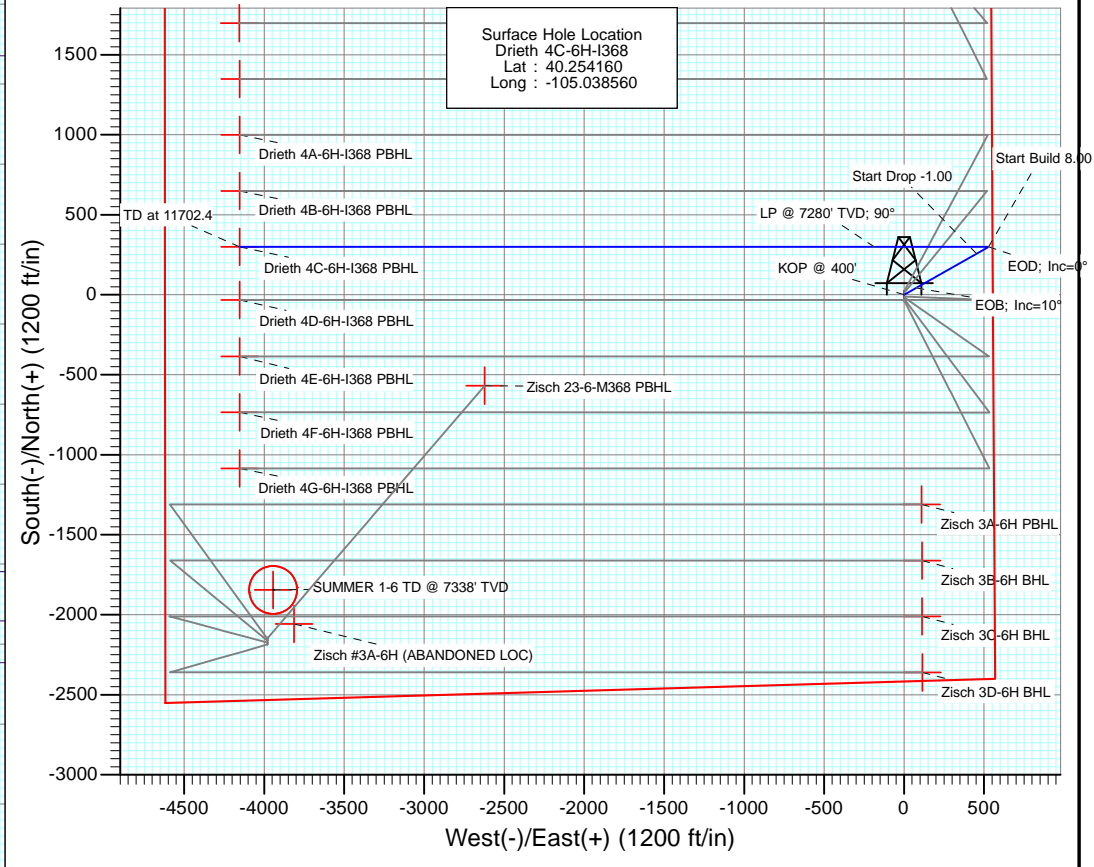


SECTION DETAILS

Sec	MD	Inc	Azi	TVD	+N/-S	+E/-W	Dleg	TFace	Vsect	Target
1	0.0	0.00	0.00	0.0	0.0	0.0	0.00	0.00	0.0	
2	400.0	0.00	0.00	400.0	0.0	0.0	0.00	0.00	0.0	
3	1400.0	10.00	60.50	1394.9	42.9	75.8	1.00	60.50	-75.8	
4	3895.0	10.00	60.50	3852.0	256.2	452.8	0.00	0.00	-452.8	
5	4895.0	0.00	0.00	4847.0	299.1	528.6	1.00	180.00	-528.6	
6	6611.8	0.00	0.00	6563.8	299.1	528.6	0.00	0.00	-528.6	
7	7736.8	90.00	270.00	7280.0	299.1	-187.6	8.00	270.00	187.6	
8	11702.4	90.00	270.00	7280.0	299.1	-4153.1	0.00	0.00	4153.1	Drieth 4C-6H-I368 PBHL



DESIGN TARGET DETAILS

Name	+N/-S	+E/-W	Northing	Easting	Latitude	Longitude
Drieth 4C-6H-I368 PBHL	299.1	-4153.1	1336047.34	3124643.35	40.254980	-105.053440

FORMATION TOP DETAILS

TVDPPath	MDPath	Formation
323.0	323.0	Fox Hills - BASE
3547.0	3585.3	Sussex
3855.0	3898.0	Sussex Marker
4116.0	4162.0	Shannon
6023.0	6071.0	Teepee Buttes (*if present)
6837.0	6892.1	Sharon Springs
6911.0	6974.3	Niobrara
7050.0	7146.3	B Chalk
7077.0	7184.0	B Marl
7110.0	7233.1	C Chalk
7148.0	7295.0	C Marl
7250.0	7528.8	Ft. Hayes
7270.0	7617.0	Codell

M Azimuths to True North
 Magnetic North: 8.70°
 Magnetic Field
 Strength: 52857.6snT
 Dip Angle: 66.84°
 Date: 4/15/2013
 Model: IGRF200510

Plan #1
 Drieth 4C-6H-I368
 13xxx; LR
 WELL @ 5123.0ft (Original Well Elev)
 Ground Elevation @ 5110.0
 North American Datum 1983
 Well Drieth 4C-6H-I368, True North

Planning Report

Database:	USA EDM 5000 Multi Users DB	Local Co-ordinate Reference:	Well Drieth 4C-6H-I368
Company:	EnCana Oil & Gas (USA) Inc	TVD Reference:	WELL @ 5123.0ft (Original Well Elev)
Project:	DJ Wattenberg	MD Reference:	WELL @ 5123.0ft (Original Well Elev)
Site:	S6-T3N-R68W (Zisch/Drieth)	North Reference:	True
Well:	Drieth 4C-6H-I368	Survey Calculation Method:	Minimum Curvature
Wellbore:	Hz		
Design:	Plan #1		

Project	DJ Wattenberg		
Map System:	US State Plane 1983	System Datum:	Mean Sea Level
Geo Datum:	North American Datum 1983		
Map Zone:	Colorado Northern Zone		

Site	S6-T3N-R68W (Zisch/Drieth)				
Site Position:		Northing:	1,333,692.14 ft	Latitude:	40.248510
From:	Lat/Long	Easting:	3,124,995.76 ft	Longitude:	-105.052220
Position Uncertainty:	0.0 ft	Slot Radius:	13.200 in	Grid Convergence:	0.29 °

Well	Drieth 4C-6H-I368					
Well Position	+N/-S	0.0 ft	Northing:	1,335,769.89 ft	Latitude:	40.254160
	+E/-W	0.0 ft	Easting:	3,128,797.96 ft	Longitude:	-105.038560
Position Uncertainty		0.0 ft	Wellhead Elevation:	ft	Ground Level:	5,110.0 ft

Wellbore	Hz				
Magnetics	Model Name	Sample Date	Declination	Dip Angle	Field Strength
			(°)	(°)	(nT)
	IGRF200510	4/15/2013	8.70	66.84	52,858

Design	Plan #1			
Audit Notes:				
Version:	Phase:	PLAN	Tie On Depth:	0.0
Vertical Section:	Depth From (TVD)	+N/-S	+E/-W	Direction
	(ft)	(ft)	(ft)	(°)
	0.0	0.0	0.0	270.00

Plan Sections										
Measured Depth (ft)	Inclination (°)	Azimuth (°)	Vertical Depth (ft)	+N/-S (ft)	+E/-W (ft)	Dogleg Rate (°/100ft)	Build Rate (°/100ft)	Turn Rate (°/100ft)	TFO (°)	Target
0.0	0.00	0.00	0.0	0.0	0.0	0.00	0.00	0.00	0.00	
400.0	0.00	0.00	400.0	0.0	0.0	0.00	0.00	0.00	0.00	
1,400.0	10.00	60.50	1,394.9	42.9	75.8	1.00	1.00	0.00	60.50	
3,895.0	10.00	60.50	3,852.0	256.2	452.8	0.00	0.00	0.00	0.00	
4,895.0	0.00	0.00	4,847.0	299.1	528.6	1.00	-1.00	0.00	180.00	
6,611.8	0.00	0.00	6,563.8	299.1	528.6	0.00	0.00	0.00	0.00	
7,736.8	90.00	270.00	7,280.0	299.1	-187.6	8.00	8.00	0.00	270.00	
11,702.4	90.00	270.00	7,280.0	299.1	-4,153.1	0.00	0.00	0.00	0.00	Drieth 4C-6H-I368 PB

Planning Report

Database:	USA EDM 5000 Multi Users DB	Local Co-ordinate Reference:	Well Drieth 4C-6H-I368
Company:	EnCana Oil & Gas (USA) Inc	TVD Reference:	WELL @ 5123.0ft (Original Well Elev)
Project:	DJ Wattenberg	MD Reference:	WELL @ 5123.0ft (Original Well Elev)
Site:	S6-T3N-R68W (Zisch/Drieth)	North Reference:	True
Well:	Drieth 4C-6H-I368	Survey Calculation Method:	Minimum Curvature
Wellbore:	Hz		
Design:	Plan #1		

Planned Survey									
Measured Depth (ft)	Inclination (°)	Azimuth (°)	Vertical Depth (ft)	+N/-S (ft)	+E/-W (ft)	Vertical Section (ft)	Dogleg Rate (°/100ft)	Build Rate (°/100ft)	Comments / Formations
0.0	0.00	0.00	0.0	0.0	0.0	0.0	0.00	0.00	
100.0	0.00	0.00	100.0	0.0	0.0	0.0	0.00	0.00	
200.0	0.00	0.00	200.0	0.0	0.0	0.0	0.00	0.00	
300.0	0.00	0.00	300.0	0.0	0.0	0.0	0.00	0.00	
323.0	0.00	0.00	323.0	0.0	0.0	0.0	0.00	0.00	Fox Hills - BASE
400.0	0.00	0.00	400.0	0.0	0.0	0.0	0.00	0.00	KOP @ 400'
500.0	1.00	60.50	500.0	0.4	0.8	-0.8	1.00	1.00	
600.0	2.00	60.50	600.0	1.7	3.0	-3.0	1.00	1.00	
700.0	3.00	60.50	699.9	3.9	6.8	-6.8	1.00	1.00	
800.0	4.00	60.50	799.7	6.9	12.1	-12.1	1.00	1.00	
900.0	5.00	60.50	899.4	10.7	19.0	-19.0	1.00	1.00	
1,000.0	6.00	60.50	998.9	15.5	27.3	-27.3	1.00	1.00	
1,100.0	7.00	60.50	1,098.3	21.0	37.2	-37.2	1.00	1.00	
1,200.0	8.00	60.50	1,197.4	27.5	48.5	-48.5	1.00	1.00	
1,300.0	9.00	60.50	1,296.3	34.7	61.4	-61.4	1.00	1.00	
1,400.0	10.00	60.50	1,394.9	42.9	75.8	-75.8	1.00	1.00	EOB; Inc=10°
1,500.0	10.00	60.50	1,493.4	51.4	90.9	-90.9	0.00	0.00	
1,600.0	10.00	60.50	1,591.9	60.0	106.0	-106.0	0.00	0.00	
1,700.0	10.00	60.50	1,690.4	68.5	121.1	-121.1	0.00	0.00	
1,800.0	10.00	60.50	1,788.9	77.1	136.2	-136.2	0.00	0.00	
1,900.0	10.00	60.50	1,887.3	85.6	151.3	-151.3	0.00	0.00	
2,000.0	10.00	60.50	1,985.8	94.2	166.4	-166.4	0.00	0.00	
2,100.0	10.00	60.50	2,084.3	102.7	181.6	-181.6	0.00	0.00	
2,200.0	10.00	60.50	2,182.8	111.3	196.7	-196.7	0.00	0.00	
2,300.0	10.00	60.50	2,281.3	119.8	211.8	-211.8	0.00	0.00	
2,400.0	10.00	60.50	2,379.7	128.4	226.9	-226.9	0.00	0.00	
2,500.0	10.00	60.50	2,478.2	136.9	242.0	-242.0	0.00	0.00	
2,600.0	10.00	60.50	2,576.7	145.5	257.1	-257.1	0.00	0.00	
2,700.0	10.00	60.50	2,675.2	154.0	272.2	-272.2	0.00	0.00	
2,800.0	10.00	60.50	2,773.7	162.6	287.4	-287.4	0.00	0.00	
2,900.0	10.00	60.50	2,872.1	171.1	302.5	-302.5	0.00	0.00	
3,000.0	10.00	60.50	2,970.6	179.7	317.6	-317.6	0.00	0.00	
3,100.0	10.00	60.50	3,069.1	188.2	332.7	-332.7	0.00	0.00	
3,200.0	10.00	60.50	3,167.6	196.8	347.8	-347.8	0.00	0.00	
3,300.0	10.00	60.50	3,266.1	205.3	362.9	-362.9	0.00	0.00	
3,400.0	10.00	60.50	3,364.5	213.9	378.0	-378.0	0.00	0.00	
3,500.0	10.00	60.50	3,463.0	222.4	393.1	-393.1	0.00	0.00	
3,585.3	10.00	60.50	3,547.0	229.7	406.0	-406.0	0.00	0.00	Sussex
3,600.0	10.00	60.50	3,561.5	231.0	408.3	-408.3	0.00	0.00	
3,700.0	10.00	60.50	3,660.0	239.5	423.4	-423.4	0.00	0.00	
3,800.0	10.00	60.50	3,758.5	248.1	438.5	-438.5	0.00	0.00	
3,895.0	10.00	60.50	3,852.0	256.2	452.8	-452.8	0.00	0.00	Start Drop -1.00
3,898.0	9.97	60.50	3,855.0	256.5	453.3	-453.3	1.00	-1.00	Sussex Marker
3,900.0	9.95	60.50	3,857.0	256.6	453.6	-453.6	1.00	-1.00	
4,000.0	8.95	60.50	3,955.6	264.7	467.9	-467.9	1.00	-1.00	
4,100.0	7.95	60.50	4,054.5	272.0	480.7	-480.7	1.00	-1.00	
4,162.0	7.33	60.50	4,116.0	276.0	487.9	-487.9	1.00	-1.00	Shannon
4,200.0	6.95	60.50	4,153.7	278.3	492.0	-492.0	1.00	-1.00	
4,300.0	5.95	60.50	4,253.0	283.9	501.7	-501.7	1.00	-1.00	
4,400.0	4.95	60.50	4,352.6	288.5	510.0	-510.0	1.00	-1.00	
4,500.0	3.95	60.50	4,452.3	292.4	516.8	-516.8	1.00	-1.00	
4,600.0	2.95	60.50	4,552.1	295.3	522.0	-522.0	1.00	-1.00	

Planning Report

Database:	USA EDM 5000 Multi Users DB	Local Co-ordinate Reference:	Well Drieth 4C-6H-I368
Company:	EnCana Oil & Gas (USA) Inc	TVD Reference:	WELL @ 5123.0ft (Original Well Elev)
Project:	DJ Wattenberg	MD Reference:	WELL @ 5123.0ft (Original Well Elev)
Site:	S6-T3N-R68W (Zisch/Drieth)	North Reference:	True
Well:	Drieth 4C-6H-I368	Survey Calculation Method:	Minimum Curvature
Wellbore:	Hz		
Design:	Plan #1		

Planned Survey									
Measured Depth (ft)	Inclination (°)	Azimuth (°)	Vertical Depth (ft)	+N/-S (ft)	+E/-W (ft)	Vertical Section (ft)	Dogleg Rate (°/100ft)	Build Rate (°/100ft)	Comments / Formations
4,700.0	1.95	60.50	4,652.0	297.4	525.7	-525.7	1.00	-1.00	
4,800.0	0.95	60.50	4,752.0	298.7	527.9	-527.9	1.00	-1.00	
4,895.0	0.00	0.00	4,847.0	299.1	528.6	-528.6	1.00	-1.00	EOD; Inc=0°
4,900.0	0.00	0.00	4,852.0	299.1	528.6	-528.6	0.00	0.00	
5,000.0	0.00	0.00	4,952.0	299.1	528.6	-528.6	0.00	0.00	
5,100.0	0.00	0.00	5,052.0	299.1	528.6	-528.6	0.00	0.00	
5,200.0	0.00	0.00	5,152.0	299.1	528.6	-528.6	0.00	0.00	
5,300.0	0.00	0.00	5,252.0	299.1	528.6	-528.6	0.00	0.00	
5,400.0	0.00	0.00	5,352.0	299.1	528.6	-528.6	0.00	0.00	
5,500.0	0.00	0.00	5,452.0	299.1	528.6	-528.6	0.00	0.00	
5,600.0	0.00	0.00	5,552.0	299.1	528.6	-528.6	0.00	0.00	
5,700.0	0.00	0.00	5,652.0	299.1	528.6	-528.6	0.00	0.00	
5,800.0	0.00	0.00	5,752.0	299.1	528.6	-528.6	0.00	0.00	
5,900.0	0.00	0.00	5,852.0	299.1	528.6	-528.6	0.00	0.00	
6,000.0	0.00	0.00	5,952.0	299.1	528.6	-528.6	0.00	0.00	
6,071.0	0.00	0.00	6,023.0	299.1	528.6	-528.6	0.00	0.00	Teepee Buttes (*if present)
6,100.0	0.00	0.00	6,052.0	299.1	528.6	-528.6	0.00	0.00	
6,200.0	0.00	0.00	6,152.0	299.1	528.6	-528.6	0.00	0.00	
6,300.0	0.00	0.00	6,252.0	299.1	528.6	-528.6	0.00	0.00	
6,400.0	0.00	0.00	6,352.0	299.1	528.6	-528.6	0.00	0.00	
6,500.0	0.00	0.00	6,452.0	299.1	528.6	-528.6	0.00	0.00	
6,600.0	0.00	0.00	6,552.0	299.1	528.6	-528.6	0.00	0.00	
6,611.8	0.00	0.00	6,563.8	299.1	528.6	-528.6	0.00	0.00	Start Build 8.00
6,700.0	7.05	270.00	6,651.7	299.1	523.2	-523.2	8.00	8.00	
6,800.0	15.05	270.00	6,749.8	299.1	504.0	-504.0	8.00	8.00	
6,892.1	22.42	270.00	6,837.0	299.1	474.5	-474.5	8.00	8.00	Sharon Springs
6,900.0	23.05	270.00	6,844.2	299.1	471.4	-471.4	8.00	8.00	
6,974.3	29.00	270.00	6,911.0	299.1	438.8	-438.8	8.00	8.00	Niobrara
7,000.0	31.05	270.00	6,933.2	299.1	426.0	-426.0	8.00	8.00	
7,100.0	39.05	270.00	7,015.0	299.1	368.6	-368.6	8.00	8.00	
7,146.3	42.75	270.00	7,050.0	299.1	338.3	-338.3	8.00	8.00	B Chalk
7,184.0	45.77	270.00	7,077.0	299.1	312.0	-312.0	8.00	8.00	B Marl
7,200.0	47.05	270.00	7,088.0	299.1	300.4	-300.4	8.00	8.00	
7,233.1	49.70	270.00	7,110.0	299.1	275.7	-275.7	8.00	8.00	C Chalk
7,295.0	54.66	270.00	7,148.0	299.1	226.7	-226.7	8.00	8.00	C Marl
7,300.0	55.05	270.00	7,150.9	299.1	222.7	-222.7	8.00	8.00	
7,400.0	63.05	270.00	7,202.2	299.1	137.0	-137.0	8.00	8.00	
7,500.0	71.05	270.00	7,241.2	299.1	45.0	-45.0	8.00	8.00	
7,528.8	73.36	270.00	7,250.0	299.1	17.5	-17.5	8.00	8.00	Ft. Hayes
7,600.0	79.05	270.00	7,267.0	299.1	-51.6	51.6	8.00	8.00	
7,617.0	80.41	270.00	7,270.0	299.1	-68.3	68.3	8.00	8.00	Codell
7,700.0	87.05	270.00	7,279.1	299.1	-150.8	150.8	8.00	8.00	
7,736.8	90.00	270.00	7,280.0	299.1	-187.6	187.6	8.00	8.00	LP @ 7280' TVD; 90°
7,800.0	90.00	270.00	7,280.0	299.1	-250.7	250.7	0.00	0.00	
7,900.0	90.00	270.00	7,280.0	299.1	-350.7	350.7	0.00	0.00	
8,000.0	90.00	270.00	7,280.0	299.1	-450.7	450.7	0.00	0.00	
8,100.0	90.00	270.00	7,280.0	299.1	-550.7	550.7	0.00	0.00	
8,200.0	90.00	270.00	7,280.0	299.1	-650.7	650.7	0.00	0.00	
8,300.0	90.00	270.00	7,280.0	299.1	-750.7	750.7	0.00	0.00	
8,400.0	90.00	270.00	7,280.0	299.1	-850.7	850.7	0.00	0.00	
8,500.0	90.00	270.00	7,280.0	299.1	-950.7	950.7	0.00	0.00	
8,600.0	90.00	270.00	7,280.0	299.1	-1,050.7	1,050.7	0.00	0.00	

Planning Report

Database:	USA EDM 5000 Multi Users DB	Local Co-ordinate Reference:	Well Drieth 4C-6H-I368
Company:	EnCana Oil & Gas (USA) Inc	TVD Reference:	WELL @ 5123.0ft (Original Well Elev)
Project:	DJ Wattenberg	MD Reference:	WELL @ 5123.0ft (Original Well Elev)
Site:	S6-T3N-R68W (Zisch/Drieth)	North Reference:	True
Well:	Drieth 4C-6H-I368	Survey Calculation Method:	Minimum Curvature
Wellbore:	Hz		
Design:	Plan #1		

Planned Survey									
Measured Depth (ft)	Inclination (°)	Azimuth (°)	Vertical Depth (ft)	+N/-S (ft)	+E/-W (ft)	Vertical Section (ft)	Dogleg Rate (°/100ft)	Build Rate (°/100ft)	Comments / Formations
8,700.0	90.00	270.00	7,280.0	299.1	-1,150.7	1,150.7	0.00	0.00	
8,800.0	90.00	270.00	7,280.0	299.1	-1,250.7	1,250.7	0.00	0.00	
8,900.0	90.00	270.00	7,280.0	299.1	-1,350.7	1,350.7	0.00	0.00	
9,000.0	90.00	270.00	7,280.0	299.1	-1,450.7	1,450.7	0.00	0.00	
9,100.0	90.00	270.00	7,280.0	299.1	-1,550.7	1,550.7	0.00	0.00	
9,200.0	90.00	270.00	7,280.0	299.1	-1,650.7	1,650.7	0.00	0.00	
9,300.0	90.00	270.00	7,280.0	299.1	-1,750.7	1,750.7	0.00	0.00	
9,400.0	90.00	270.00	7,280.0	299.1	-1,850.7	1,850.7	0.00	0.00	
9,500.0	90.00	270.00	7,280.0	299.1	-1,950.7	1,950.7	0.00	0.00	
9,600.0	90.00	270.00	7,280.0	299.1	-2,050.7	2,050.7	0.00	0.00	
9,700.0	90.00	270.00	7,280.0	299.1	-2,150.7	2,150.7	0.00	0.00	
9,800.0	90.00	270.00	7,280.0	299.1	-2,250.7	2,250.7	0.00	0.00	
9,900.0	90.00	270.00	7,280.0	299.1	-2,350.7	2,350.7	0.00	0.00	
10,000.0	90.00	270.00	7,280.0	299.1	-2,450.7	2,450.7	0.00	0.00	
10,100.0	90.00	270.00	7,280.0	299.1	-2,550.7	2,550.7	0.00	0.00	
10,200.0	90.00	270.00	7,280.0	299.1	-2,650.7	2,650.7	0.00	0.00	
10,300.0	90.00	270.00	7,280.0	299.1	-2,750.7	2,750.7	0.00	0.00	
10,400.0	90.00	270.00	7,280.0	299.1	-2,850.7	2,850.7	0.00	0.00	
10,500.0	90.00	270.00	7,280.0	299.1	-2,950.7	2,950.7	0.00	0.00	
10,600.0	90.00	270.00	7,280.0	299.1	-3,050.7	3,050.7	0.00	0.00	
10,700.0	90.00	270.00	7,280.0	299.1	-3,150.7	3,150.7	0.00	0.00	
10,800.0	90.00	270.00	7,280.0	299.1	-3,250.7	3,250.7	0.00	0.00	
10,900.0	90.00	270.00	7,280.0	299.1	-3,350.7	3,350.7	0.00	0.00	
11,000.0	90.00	270.00	7,280.0	299.1	-3,450.7	3,450.7	0.00	0.00	
11,100.0	90.00	270.00	7,280.0	299.1	-3,550.7	3,550.7	0.00	0.00	
11,200.0	90.00	270.00	7,280.0	299.1	-3,650.7	3,650.7	0.00	0.00	
11,300.0	90.00	270.00	7,280.0	299.1	-3,750.7	3,750.7	0.00	0.00	
11,400.0	90.00	270.00	7,280.0	299.1	-3,850.7	3,850.7	0.00	0.00	
11,500.0	90.00	270.00	7,280.0	299.1	-3,950.7	3,950.7	0.00	0.00	
11,600.0	90.00	270.00	7,280.0	299.1	-4,050.7	4,050.7	0.00	0.00	
11,700.0	90.00	270.00	7,280.0	299.1	-4,150.7	4,150.7	0.00	0.00	
11,702.4	90.00	270.00	7,280.0	299.1	-4,153.1	4,153.1	0.00	0.00	TD at 11702.4 - Drieth 4C-6H-I368 PBHL

Targets									
Target Name	Dip Angle (°)	Dip Dir. (°)	TVD (ft)	+N/-S (ft)	+E/-W (ft)	Northing (ft)	Easting (ft)	Latitude	Longitude
Drieth 4C-6H-I368 PBHL - hit/miss target - Shape - plan hits target center - Point	0.00	0.00	7,280.0	299.1	-4,153.1	1,336,047.34	3,124,643.35	40.254980	-105.053440

Planning Report

Database:	USA EDM 5000 Multi Users DB	Local Co-ordinate Reference:	Well Drieth 4C-6H-I368
Company:	EnCana Oil & Gas (USA) Inc	TVD Reference:	WELL @ 5123.0ft (Original Well Elev)
Project:	DJ Wattenberg	MD Reference:	WELL @ 5123.0ft (Original Well Elev)
Site:	S6-T3N-R68W (Zisch/Drieth)	North Reference:	True
Well:	Drieth 4C-6H-I368	Survey Calculation Method:	Minimum Curvature
Wellbore:	Hz		
Design:	Plan #1		

Formations						
Measured Depth (ft)	Vertical Depth (ft)	Name	Lithology	Dip (°)	Dip Direction (°)	
323.0	323.0	Fox Hills - BASE				
3,585.3	3,547.0	Sussex				
3,898.0	3,855.0	Sussex Marker				
4,162.0	4,116.0	Shannon				
6,071.0	6,023.0	Teepee Buttes (*if present)				
6,892.1	6,837.0	Sharon Springs				
6,974.3	6,911.0	Niobrara				
7,146.3	7,050.0	B Chalk				
7,184.0	7,077.0	B Marl				
7,233.1	7,110.0	C Chalk				
7,295.0	7,148.0	C Marl				
7,528.8	7,250.0	Ft. Hayes				
7,617.0	7,270.0	Codell				

Plan Annotations					
Measured Depth (ft)	Vertical Depth (ft)	Local Coordinates		Comment	
		+N/-S (ft)	+E/-W (ft)		
400.0	400.0	0.0	0.0	KOP @ 400'	
1,400.0	1,394.9	42.9	75.8	EOB; Inc=10°	
3,895.0	3,852.0	256.2	452.8	Start Drop -1.00	
4,895.0	4,847.0	299.1	528.6	EOD; Inc=0°	
6,611.8	6,563.8	299.1	528.6	Start Build 8.00	
7,736.8	7,280.0	299.1	-187.6	LP @ 7280' TVD; 90°	
11,702.4	7,280.0	299.1	-4,153.1	TD at 11702.4	

EnCana Oil & Gas (USA) Inc

DJ Wattenberg

S6-T3N-R68W (Zisch/Drieth)

Drieth 4C-6H-I368

Hz

Plan #1

Anticollision Report

15 April, 2013

Anticollision Report

Company:	EnCana Oil & Gas (USA) Inc	Local Co-ordinate Reference:	Well Drieth 4C-6H-I368
Project:	DJ Wattenberg	TVD Reference:	WELL @ 5123.0ft (Original Well Elev)
Reference Site:	S6-T3N-R68W (Zisch/Drieth)	MD Reference:	WELL @ 5123.0ft (Original Well Elev)
Site Error:	0.0ft	North Reference:	True
Reference Well:	Drieth 4C-6H-I368	Survey Calculation Method:	Minimum Curvature
Well Error:	0.0ft	Output errors are at	2.00 sigma
Reference Wellbore	Hz	Database:	USA EDM 5000 Multi Users DB
Reference Design:	Plan #1	Offset TVD Reference:	Offset Datum

Reference	Plan #1		
Filter type:	NO GLOBAL FILTER: Using user defined selection & filtering criteria		
Interpolation Method:	MD Interval 100.0ft	Error Model:	Systematic Ellipse
Depth Range:	Unlimited	Scan Method:	Closest Approach 3D
Results Limited by:	Maximum center-center distance of 500.0ft	Error Surface:	Elliptical Conic
Warning Levels Evaluated at:	2.00 Sigma		

Survey Tool Program	Date	4/15/2013		
From (ft)	To (ft)	Survey (Wellbore)	Tool Name	Description
0.0	11,702.4	Plan #1 (Hz)	MWD	Geolink MWD

Site Name	Reference Measured Depth (ft)	Offset Measured Depth (ft)	Distance Between Centres (ft)	Distance Between Ellipses (ft)	Separation Factor	Warning
Summary						
Offset Well - Wellbore - Design						
S6-T3N-R68W (Zisch/Drieth)						
Breakneck Properties 21-6 - DD - Plan #1						Out of range
Drieth 1A-6H-A368 - Hz - Plan #1						Out of range
Drieth 1B-6H-A368 - Hz - Plan #1						Out of range
Drieth 1C-6H-A368 - Hz - Plan #1						Out of range
Drieth 1D-6H-A368 - Hz - Plan #1						Out of range
Drieth 1E-6H-A368 - Hz - Plan #1						Out of range
Drieth 4A-6H-I368 - Hz - Plan #1	200.0	200.0	21.9	21.2	33.485	CC, ES
Drieth 4A-6H-I368 - Hz - Plan #1	900.0	895.8	48.6	45.4	15.267	SF
Drieth 4B-6H-I368 - Hz - Plan #1	300.0	300.0	10.9	9.9	10.909	CC, ES
Drieth 4B-6H-I368 - Hz - Plan #1	11,702.4	11,501.8	413.2	227.9	2.230	SF
Drieth 4D-6H-I368 - Hz - Plan #1	400.0	400.0	11.3	9.9	8.350	CC
Drieth 4D-6H-I368 - Hz - Plan #1	500.0	500.0	11.5	9.8	6.786	ES
Drieth 4D-6H-I368 - Hz - Plan #1	11,702.4	11,470.0	397.9	215.6	2.183	SF
Drieth 4E-6H-I368 - Hz - Plan #1	400.0	400.0	18.4	17.1	13.641	CC, ES
Drieth 4E-6H-I368 - Hz - Plan #1	600.0	599.5	22.1	20.0	10.749	SF
Drieth 4F-6H-I368 - Hz - Plan #1	266.3	267.3	29.3	28.4	33.042	CC
Drieth 4F-6H-I368 - Hz - Plan #1	300.0	301.0	29.3	28.3	29.173	ES
Drieth 4F-6H-I368 - Hz - Plan #1	600.0	599.4	37.4	35.4	18.207	SF
Drieth 4G-6H-I368 - Hz - Plan #1	166.3	167.3	40.2	39.6	74.806	CC
Drieth 4G-6H-I368 - Hz - Plan #1	200.0	201.0	40.2	39.5	61.374	ES
Drieth 4G-6H-I368 - Hz - Plan #1	700.0	696.4	63.6	61.1	26.332	SF
SUMMER 6-1 (EXISTING) - EXISTING - NO SURVEYS						Out of range
Zisch 23-6-M368 - DD - Plan #1						Out of range
Zisch 3A-6H-M368 - HZ - Plan #1						Out of range
Zisch 3B-6H-M368 - HZ - Plan #1						Out of range
Zisch 3C-6H-M368 - HZ - Plan #1						Out of range
Zisch 3D-6H-M368 - HZ - Plan #1						Out of range

CC - Min centre to center distance or convergent point, SF - min separation factor, ES - min ellipse separation

Anticollision Report

Company:	EnCana Oil & Gas (USA) Inc	Local Co-ordinate Reference:	Well Drieth 4C-6H-I368
Project:	DJ Wattenberg	TVD Reference:	WELL @ 5123.0ft (Original Well Elev)
Reference Site:	S6-T3N-R68W (Zisch/Drieth)	MD Reference:	WELL @ 5123.0ft (Original Well Elev)
Site Error:	0.0ft	North Reference:	True
Reference Well:	Drieth 4C-6H-I368	Survey Calculation Method:	Minimum Curvature
Well Error:	0.0ft	Output errors are at	2.00 sigma
Reference Wellbore	Hz	Database:	USA EDM 5000 Multi Users DB
Reference Design:	Plan #1	Offset TVD Reference:	Offset Datum

Offset Design S6-T3N-R68W (Zisch/Drieth) - Drieth 4A-6H-I368 - Hz - Plan #1													Offset Site Error:	0.0 ft
Survey Program: 0-MWD													Offset Well Error:	0.0 ft
Reference		Offset		Semi Major Axis			Distance				Total Uncertainty Axis	Separation Factor	Warning	
Measured Depth (ft)	Vertical Depth (ft)	Measured Depth (ft)	Vertical Depth (ft)	Reference (ft)	Offset (ft)	Highside Toolface (°)	Offset Wellbore Centre +N/-S (ft)	+E/-W (ft)	Between Centres (ft)	Between Ellipses (ft)				
0.0	0.0	0.0	0.0	0.0	0.0	0.00	21.9	0.0	21.9					
100.0	100.0	100.0	100.0	0.2	0.2	0.00	21.9	0.0	21.9	21.6	0.30	71.973		
200.0	200.0	200.0	200.0	0.3	0.3	0.00	21.9	0.0	21.9	21.2	0.65	33.485 CC, ES		
300.0	300.0	299.7	299.6	0.5	0.5	1.04	22.6	0.4	22.6	21.6	1.00	22.579		
400.0	400.0	399.2	399.2	0.7	0.7	3.76	24.9	1.6	25.0	23.6	1.36	18.424		
500.0	500.0	498.8	498.6	0.9	0.9	-54.57	28.7	3.7	28.5	26.8	1.70	16.740		
600.0	600.0	598.2	597.9	1.0	1.1	-54.24	34.0	6.5	32.6	30.5	2.05	15.858		
700.0	699.9	697.5	696.9	1.2	1.3	-55.14	40.9	10.2	37.3	34.9	2.42	15.433		
800.0	799.7	796.7	795.6	1.4	1.5	-56.84	49.2	14.7	42.6	39.8	2.79	15.273		
900.0	899.4	895.8	894.1	1.6	1.8	-58.99	59.0	19.9	48.6	45.4	3.18	15.267 SF		
1,000.0	998.9	994.8	992.2	1.8	2.0	-61.36	70.4	26.0	55.3	51.7	3.60	15.347		
1,100.0	1,098.3	1,093.6	1,090.0	2.1	2.3	-63.80	83.1	32.9	62.8	58.8	4.06	15.467		
1,200.0	1,197.4	1,192.2	1,187.3	2.3	2.6	-66.20	97.4	40.5	71.1	66.6	4.56	15.598		
1,300.0	1,296.3	1,290.7	1,284.1	2.6	3.0	-68.50	113.1	48.9	80.3	75.2	5.10	15.723		
1,400.0	1,394.9	1,389.0	1,380.5	2.9	3.3	-70.67	130.2	58.1	90.3	84.6	5.70	15.831		
1,500.0	1,493.4	1,487.1	1,476.3	3.3	3.7	-72.32	148.7	68.0	101.4	95.1	6.33	16.031		
1,600.0	1,591.9	1,584.9	1,571.5	3.6	4.2	-73.08	168.6	78.7	113.9	106.9	6.96	16.368		
1,700.0	1,690.4	1,682.4	1,665.9	3.9	4.6	-73.18	189.9	90.1	127.7	120.1	7.59	16.810		
1,800.0	1,788.9	1,781.0	1,761.2	4.3	5.1	-72.96	212.4	102.2	142.3	134.0	8.23	17.287		
1,900.0	1,887.3	1,880.0	1,856.8	4.6	5.5	-72.77	235.0	114.3	156.9	148.0	8.87	17.687		
2,000.0	1,985.8	1,978.9	1,952.3	4.9	6.0	-72.62	257.5	126.4	171.5	162.0	9.51	18.026		
2,100.0	2,084.3	2,077.8	2,047.9	5.3	6.5	-72.49	280.1	138.5	186.1	176.0	10.16	18.316		
2,200.0	2,182.8	2,176.7	2,143.4	5.6	6.9	-72.38	302.7	150.6	200.8	189.9	10.81	18.567		
2,300.0	2,281.3	2,275.7	2,239.0	6.0	7.4	-72.28	325.2	162.7	215.4	203.9	11.47	18.786		
2,400.0	2,379.7	2,374.6	2,334.5	6.3	7.9	-72.20	347.8	174.8	230.0	217.9	12.12	18.978		
2,500.0	2,478.2	2,473.5	2,430.1	6.7	8.4	-72.12	370.4	186.9	244.6	231.9	12.78	19.149		
2,600.0	2,576.7	2,572.4	2,525.6	7.0	8.8	-72.06	392.9	199.0	259.3	245.8	13.43	19.301		
2,700.0	2,675.2	2,671.4	2,621.2	7.4	9.3	-72.00	415.5	211.1	273.9	259.8	14.09	19.437		
2,800.0	2,773.7	2,770.3	2,716.7	7.7	9.8	-71.95	438.0	223.2	288.5	273.8	14.75	19.560		
2,900.0	2,872.1	2,869.2	2,812.3	8.0	10.3	-71.90	460.6	235.3	303.1	287.7	15.41	19.671		
3,000.0	2,970.6	2,968.1	2,907.8	8.4	10.7	-71.86	483.2	247.4	317.8	301.7	16.07	19.773		
3,100.0	3,069.1	3,067.1	3,003.4	8.7	11.2	-71.82	505.7	259.5	332.4	315.7	16.73	19.865		
3,200.0	3,167.6	3,166.0	3,099.0	9.1	11.7	-71.78	528.3	271.6	347.0	329.6	17.40	19.950		
3,300.0	3,266.1	3,264.9	3,194.5	9.4	12.2	-71.75	550.9	283.7	361.7	343.6	18.06	20.028		
3,400.0	3,364.5	3,363.8	3,290.1	9.8	12.6	-71.72	573.4	295.8	376.3	357.6	18.72	20.100		
3,500.0	3,463.0	3,462.8	3,385.6	10.1	13.1	-71.69	596.0	307.9	390.9	371.5	19.38	20.167		
3,600.0	3,561.5	3,561.7	3,481.2	10.5	13.6	-71.66	618.6	319.9	405.5	385.5	20.05	20.228		
3,700.0	3,660.0	3,660.6	3,576.7	10.8	14.1	-71.64	641.1	332.0	420.2	399.5	20.71	20.286		
3,800.0	3,758.5	3,759.5	3,672.3	11.2	14.6	-71.62	663.7	344.1	434.8	413.4	21.38	20.340		
3,900.0	3,857.0	3,858.4	3,767.8	11.5	15.0	-71.60	686.3	356.2	449.4	427.4	22.04	20.389		
4,000.0	3,955.6	3,957.3	3,863.3	11.9	15.5	-71.61	708.8	368.3	464.4	441.7	22.68	20.473		
4,100.0	4,054.5	4,056.1	3,958.7	12.2	16.0	-71.44	731.3	380.4	479.8	456.6	23.26	20.628		
4,200.0	4,153.7	4,154.7	4,054.0	12.4	16.5	-71.09	753.8	392.5	495.9	472.1	23.78	20.853		

CC - Min centre to center distance or convergent point, SF - min separation factor, ES - min ellipse separation

Anticollision Report

Company:	EnCana Oil & Gas (USA) Inc	Local Co-ordinate Reference:	Well Drieth 4C-6H-I368
Project:	DJ Wattenberg	TVD Reference:	WELL @ 5123.0ft (Original Well Elev)
Reference Site:	S6-T3N-R68W (Zisch/Drieth)	MD Reference:	WELL @ 5123.0ft (Original Well Elev)
Site Error:	0.0ft	North Reference:	True
Reference Well:	Drieth 4C-6H-I368	Survey Calculation Method:	Minimum Curvature
Well Error:	0.0ft	Output errors are at	2.00 sigma
Reference Wellbore	Hz	Database:	USA EDM 5000 Multi Users DB
Reference Design:	Plan #1	Offset TVD Reference:	Offset Datum

Offset Design S6-T3N-R68W (Zisch/Drieth) - Drieth 4B-6H-I368 - Hz - Plan #1													Offset Site Error:	0.0 ft	
Survey Program: 0-MWD													Offset Well Error:		0.0 ft
Reference		Offset		Semi Major Axis			Distance				Total Uncertainty Axis	Separation Factor	Warning		
Measured Depth (ft)	Vertical Depth (ft)	Measured Depth (ft)	Vertical Depth (ft)	Reference (ft)	Offset (ft)	Highside Toolface (°)	Offset Wellbore Centre +N/-S (ft)	+E/-W (ft)	Between Centres (ft)	Between Ellipses (ft)					
0.0	0.0	0.0	0.0	0.0	0.0	0.00	10.9	0.0	10.9						
100.0	100.0	100.0	100.0	0.2	0.2	0.00	10.9	0.0	10.9	10.6	0.30	35.986			
200.0	200.0	200.0	200.0	0.3	0.3	0.00	10.9	0.0	10.9	10.3	0.65	16.742			
300.0	300.0	300.0	300.0	0.5	0.5	0.00	10.9	0.0	10.9	9.9	1.00	10.909	CC, ES		
400.0	400.0	399.8	399.8	0.7	0.7	2.71	11.6	0.5	11.6	10.3	1.35	8.598			
500.0	500.0	499.6	499.6	0.9	0.9	-54.28	13.6	2.2	13.3	11.6	1.70	7.807			
600.0	600.0	599.4	599.3	1.0	1.0	-53.38	17.0	4.9	15.4	13.4	2.06	7.500			
700.0	699.9	699.1	698.8	1.2	1.2	-54.22	21.7	8.8	18.0	15.6	2.42	7.440			
800.0	799.7	798.8	798.2	1.4	1.4	-56.12	27.8	13.7	21.0	18.2	2.79	7.523			
900.0	899.4	898.4	897.3	1.6	1.7	-58.56	35.2	19.7	24.5	21.3	3.19	7.689			
1,000.0	998.9	998.0	996.2	1.8	1.9	-61.23	43.9	26.8	28.6	24.9	3.61	7.900			
1,100.0	1,098.3	1,097.5	1,094.9	2.1	2.2	-63.90	53.9	34.9	33.1	29.1	4.08	8.129			
1,200.0	1,197.4	1,196.9	1,193.2	2.3	2.5	-66.45	65.3	44.2	38.3	33.7	4.58	8.358			
1,300.0	1,296.3	1,296.2	1,291.2	2.6	2.8	-68.84	78.0	54.5	44.1	38.9	5.14	8.576			
1,400.0	1,394.9	1,395.4	1,388.8	2.9	3.1	-71.02	91.9	65.8	50.5	44.7	5.75	8.776			
1,500.0	1,493.4	1,494.6	1,485.9	3.3	3.5	-72.24	107.2	78.3	57.7	51.3	6.38	9.043			
1,600.0	1,591.9	1,594.2	1,583.4	3.6	3.9	-72.54	123.3	91.3	65.6	58.5	7.01	9.350			
1,700.0	1,690.4	1,693.9	1,680.9	3.9	4.3	-72.77	139.4	104.4	73.4	65.8	7.65	9.595			
1,800.0	1,788.9	1,793.6	1,778.4	4.3	4.6	-72.95	155.5	117.5	81.3	73.0	8.30	9.794			
1,900.0	1,887.3	1,893.3	1,875.9	4.6	5.0	-73.10	171.6	130.5	89.1	80.2	8.95	9.958			
2,000.0	1,985.8	1,993.0	1,973.5	4.9	5.4	-73.23	187.6	143.6	97.0	87.4	9.61	10.095			
2,100.0	2,084.3	2,092.7	2,071.0	5.3	5.8	-73.34	203.7	156.7	104.9	94.6	10.27	10.211			
2,200.0	2,182.8	2,192.4	2,168.5	5.6	6.2	-73.43	219.8	169.8	112.7	101.8	10.93	10.311			
2,300.0	2,281.3	2,292.1	2,266.0	6.0	6.6	-73.52	235.9	182.8	120.6	109.0	11.60	10.397			
2,400.0	2,379.7	2,391.7	2,363.5	6.3	7.0	-73.59	252.0	195.9	128.5	116.2	12.27	10.472			
2,500.0	2,478.2	2,491.4	2,461.0	6.7	7.4	-73.65	268.1	209.0	136.3	123.4	12.94	10.538			
2,600.0	2,576.7	2,591.1	2,558.5	7.0	7.8	-73.71	284.1	222.0	144.2	130.6	13.61	10.596			
2,700.0	2,675.2	2,690.8	2,656.0	7.4	8.2	-73.76	300.2	235.1	152.1	137.8	14.28	10.648			
2,800.0	2,773.7	2,790.5	2,753.6	7.7	8.6	-73.80	316.3	248.2	159.9	145.0	14.95	10.695			
2,900.0	2,872.1	2,890.2	2,851.1	8.0	9.0	-73.84	332.4	261.3	167.8	152.2	15.63	10.736			
3,000.0	2,970.6	2,989.9	2,948.6	8.4	9.4	-73.88	348.5	274.3	175.7	159.3	16.30	10.774			
3,100.0	3,069.1	3,089.6	3,046.1	8.7	9.8	-73.91	364.6	287.4	183.5	166.5	16.98	10.809			
3,200.0	3,167.6	3,189.3	3,143.6	9.1	10.2	-73.95	380.7	300.5	191.4	173.7	17.66	10.840			
3,300.0	3,266.1	3,289.0	3,241.1	9.4	10.6	-73.97	396.7	313.5	199.2	180.9	18.33	10.869			
3,400.0	3,364.5	3,388.6	3,338.6	9.8	11.0	-74.00	412.8	326.6	207.1	188.1	19.01	10.895			
3,500.0	3,463.0	3,488.3	3,436.1	10.1	11.4	-74.03	428.9	339.7	215.0	195.3	19.69	10.919			
3,600.0	3,561.5	3,588.0	3,533.6	10.5	11.8	-74.05	445.0	352.8	222.8	202.5	20.37	10.942			
3,700.0	3,660.0	3,687.7	3,631.2	10.8	12.2	-74.07	461.1	365.8	230.7	209.7	21.04	10.963			
3,800.0	3,758.5	3,787.4	3,728.7	11.2	12.6	-74.09	477.2	378.9	238.6	216.8	21.72	10.982			
3,900.0	3,857.0	3,887.1	3,826.2	11.5	13.0	-74.11	493.2	392.0	246.4	224.0	22.40	11.000			
4,000.0	3,955.6	3,986.8	3,923.7	11.9	13.4	-74.00	509.3	405.0	254.6	231.5	23.04	11.050			
4,100.0	4,054.5	4,086.4	4,021.1	12.2	13.8	-73.54	525.4	418.1	263.2	239.6	23.60	11.153			
4,200.0	4,153.7	4,185.9	4,118.4	12.4	14.2	-72.76	541.5	431.1	272.3	248.3	24.08	11.308			
4,300.0	4,253.0	4,286.4	4,216.7	12.7	14.6	-71.72	557.6	444.3	282.0	257.5	24.50	11.513			
4,400.0	4,352.6	4,389.1	4,317.5	12.9	15.0	-70.61	573.0	456.7	291.5	266.6	24.85	11.731			
4,500.0	4,452.3	4,492.0	4,418.9	13.1	15.3	-69.50	587.0	468.1	300.4	275.3	25.14	11.949			
4,600.0	4,552.1	4,595.2	4,520.7	13.3	15.7	-68.40	599.6	478.4	308.9	283.6	25.39	12.167			
4,700.0	4,652.0	4,698.5	4,623.1	13.4	16.0	-67.30	610.8	487.5	317.0	291.4	25.59	12.388			
4,800.0	4,752.0	4,802.1	4,725.9	13.6	16.2	-66.19	620.6	495.4	324.6	298.8	25.74	12.610			
4,900.0	4,852.0	4,905.9	4,829.2	13.7	16.5	-4.57	628.9	502.2	331.7	308.8	22.91	14.480			
5,000.0	4,952.0	5,010.0	4,932.9	13.8	16.7	-3.52	635.9	507.9	338.0	314.5	23.48	14.397			
5,100.0	5,052.0	5,114.4	5,037.0	13.9	16.9	-2.72	641.3	512.3	343.0	319.0	23.97	14.306			

CC - Min centre to center distance or convergent point, SF - min separation factor, ES - min ellipse separation

Anticollision Report

Company:	EnCana Oil & Gas (USA) Inc	Local Co-ordinate Reference:	Well Drieth 4C-6H-I368
Project:	DJ Wattenberg	TVD Reference:	WELL @ 5123.0ft (Original Well Elev)
Reference Site:	S6-T3N-R68W (Zisch/Drieth)	MD Reference:	WELL @ 5123.0ft (Original Well Elev)
Site Error:	0.0ft	North Reference:	True
Reference Well:	Drieth 4C-6H-I368	Survey Calculation Method:	Minimum Curvature
Well Error:	0.0ft	Output errors are at	2.00 sigma
Reference Wellbore	Hz	Database:	USA EDM 5000 Multi Users DB
Reference Design:	Plan #1	Offset TVD Reference:	Offset Datum

Offset Design S6-T3N-R68W (Zisch/Drieth) - Drieth 4B-6H-I368 - Hz - Plan #1													Offset Site Error:	0.0 ft
Survey Program: 0-MWD													Offset Well Error:	0.0 ft
Reference		Offset		Semi Major Axis			Distance				Total Uncertainty Axis	Separation Factor	Warning	
Measured Depth (ft)	Vertical Depth (ft)	Measured Depth (ft)	Vertical Depth (ft)	Reference (ft)	Offset (ft)	Highside Toolface (°)	Offset Wellbore Centre +N/-S (ft)	+E/-W (ft)	Between Centres (ft)	Between Ellipses (ft)				
5,200.0	5,152.0	5,219.0	5,141.4	14.0	17.0	-2.15	645.4	515.6	346.7	322.3	24.41	14.205		
5,300.0	5,252.0	5,323.7	5,246.1	14.1	17.2	-1.80	647.9	517.6	349.0	324.3	24.77	14.089		
5,400.0	5,352.0	5,428.6	5,351.0	14.2	17.3	-1.65	648.9	518.5	350.0	324.9	25.08	13.954		
5,500.0	5,452.0	5,529.6	5,452.0	14.4	17.4	-1.65	649.0	518.5	350.0	324.7	25.35	13.806		
5,600.0	5,552.0	5,629.6	5,552.0	14.5	17.5	-1.65	649.0	518.5	350.0	324.4	25.63	13.660		
5,700.0	5,652.0	5,729.6	5,652.0	14.6	17.6	-1.65	649.0	518.5	350.0	324.1	25.90	13.516		
5,800.0	5,752.0	5,829.6	5,752.0	14.7	17.7	-1.65	649.0	518.5	350.0	323.9	26.17	13.374		
5,900.0	5,852.0	5,929.6	5,852.0	14.8	17.8	-1.65	649.0	518.5	350.0	323.6	26.45	13.234		
6,000.0	5,952.0	6,029.6	5,952.0	15.0	17.9	-1.65	649.0	518.5	350.0	323.3	26.73	13.097		
6,100.0	6,052.0	6,129.6	6,052.0	15.1	18.0	-1.65	649.0	518.5	350.0	323.0	27.01	12.961		
6,200.0	6,152.0	6,229.6	6,152.0	15.2	18.1	-1.65	649.0	518.5	350.0	322.8	27.29	12.828		
6,300.0	6,252.0	6,329.6	6,252.0	15.3	18.2	-1.65	649.0	518.5	350.0	322.5	27.57	12.697		
6,363.7	6,315.7	6,393.3	6,315.7	15.4	18.2	-1.65	649.0	518.5	350.0	322.3	27.75	12.614		
6,400.0	6,352.0	6,429.4	6,351.8	15.5	18.3	-1.66	649.0	518.5	350.0	322.2	27.85	12.568		
6,500.0	6,452.0	6,527.3	6,449.3	15.6	18.3	-2.93	649.0	510.7	350.4	322.5	27.91	12.553		
6,600.0	6,552.0	6,621.3	6,541.1	15.7	18.2	-6.17	649.0	490.8	352.1	324.5	27.65	12.736		
6,700.0	6,651.7	6,710.5	6,625.2	15.7	18.0	79.47	649.0	460.9	356.4	325.8	30.61	11.642		
6,800.0	6,749.8	6,797.1	6,702.5	15.7	17.8	75.38	649.0	422.2	362.4	331.8	30.64	11.827		
6,900.0	6,844.2	6,881.3	6,772.8	15.4	17.6	71.67	649.0	375.8	369.7	339.4	30.24	12.224		
7,000.0	6,933.2	6,963.7	6,835.8	15.1	17.3	68.38	649.0	322.8	377.6	348.1	29.48	12.809		
7,100.0	7,015.0	7,044.5	6,891.2	14.8	17.1	65.55	649.0	264.1	385.6	357.1	28.46	13.549		
7,200.0	7,088.0	7,124.0	6,939.0	14.5	17.0	63.16	649.0	200.6	393.2	365.8	27.36	14.369		
7,300.0	7,150.9	7,200.0	6,977.8	14.2	16.9	61.27	649.0	135.4	400.0	373.5	26.42	15.136		
7,400.0	7,202.2	7,280.2	7,011.1	14.1	16.9	59.74	649.0	62.4	405.6	379.7	25.89	15.666		
7,500.0	7,241.2	7,357.3	7,035.2	14.1	17.1	58.67	648.9	-10.8	409.8	383.8	26.07	15.721		
7,600.0	7,267.0	7,434.0	7,051.2	15.1	17.5	58.04	648.9	-85.7	412.5	385.4	27.06	15.241		
7,700.0	7,279.1	7,510.5	7,059.1	16.3	18.1	57.81	648.9	-161.8	413.4	384.5	28.91	14.300		
7,800.0	7,280.0	7,599.5	7,060.0	17.9	19.2	57.84	648.9	-250.8	413.3	381.9	31.38	13.171		
7,900.0	7,280.0	7,699.5	7,060.0	19.6	20.7	57.84	648.9	-350.8	413.3	379.1	34.21	12.081		
8,000.0	7,280.0	7,799.5	7,060.0	21.4	22.4	57.84	648.9	-450.8	413.3	376.0	37.30	11.081		
8,100.0	7,280.0	7,899.5	7,060.0	23.4	24.3	57.84	648.9	-550.8	413.3	372.7	40.59	10.183		
8,200.0	7,280.0	7,999.5	7,060.0	25.4	26.3	57.84	648.9	-650.8	413.3	369.2	44.03	9.387		
8,300.0	7,280.0	8,099.5	7,060.0	27.6	28.3	57.84	648.9	-750.8	413.3	365.7	47.59	8.684		
8,400.0	7,280.0	8,199.5	7,060.0	29.7	30.4	57.84	648.9	-850.8	413.3	362.0	51.25	8.064		
8,500.0	7,280.0	8,299.5	7,060.0	32.0	32.6	57.84	648.9	-950.8	413.3	358.3	54.98	7.516		
8,600.0	7,280.0	8,399.5	7,060.0	34.2	34.8	57.84	648.9	-1,050.8	413.3	354.5	58.78	7.031		
8,700.0	7,280.0	8,499.5	7,060.0	36.5	37.1	57.84	648.9	-1,150.8	413.3	350.6	62.63	6.599		
8,800.0	7,280.0	8,599.5	7,060.0	38.8	39.3	57.84	648.9	-1,250.8	413.3	346.7	66.52	6.213		
8,900.0	7,280.0	8,699.5	7,060.0	41.1	41.6	57.83	648.9	-1,350.8	413.3	342.8	70.44	5.867		
9,000.0	7,280.0	8,799.5	7,060.0	43.4	43.9	57.83	648.9	-1,450.8	413.2	338.9	74.40	5.555		
9,100.0	7,280.0	8,899.5	7,060.0	45.8	46.3	57.83	648.9	-1,550.8	413.2	334.9	78.38	5.273		
9,200.0	7,280.0	8,999.5	7,060.0	48.2	48.6	57.83	648.9	-1,650.8	413.2	330.9	82.38	5.017		
9,300.0	7,280.0	9,099.5	7,060.0	50.5	51.0	57.83	648.9	-1,750.8	413.2	326.8	86.39	4.783		
9,400.0	7,280.0	9,199.5	7,060.0	52.9	53.3	57.83	648.9	-1,850.8	413.2	322.8	90.43	4.570		
9,500.0	7,280.0	9,299.5	7,060.0	55.3	55.7	57.83	648.9	-1,950.8	413.2	318.8	94.48	4.374		
9,600.0	7,280.0	9,399.5	7,060.0	57.7	58.1	57.83	648.9	-2,050.8	413.2	314.7	98.54	4.194		
9,700.0	7,280.0	9,499.5	7,060.0	60.1	60.5	57.83	648.9	-2,150.8	413.2	310.6	102.61	4.027		
9,800.0	7,280.0	9,599.5	7,060.0	62.5	62.9	57.83	648.9	-2,250.8	413.2	306.5	106.69	3.873		
9,900.0	7,280.0	9,699.5	7,060.0	64.9	65.3	57.83	648.9	-2,350.8	413.2	302.4	110.78	3.730		
10,000.0	7,280.0	9,799.5	7,060.0	67.4	67.7	57.83	648.9	-2,450.8	413.2	298.3	114.88	3.597		
10,100.0	7,280.0	9,899.5	7,060.0	69.8	70.1	57.83	648.8	-2,550.8	413.2	294.2	118.98	3.473		
10,200.0	7,280.0	9,999.5	7,060.0	72.2	72.5	57.83	648.8	-2,650.8	413.2	290.1	123.09	3.357		

CC - Min centre to center distance or convergent point, SF - min separation factor, ES - min ellipse separation

Anticollision Report

Company:	EnCana Oil & Gas (USA) Inc	Local Co-ordinate Reference:	Well Drieth 4C-6H-I368
Project:	DJ Wattenberg	TVD Reference:	WELL @ 5123.0ft (Original Well Elev)
Reference Site:	S6-T3N-R68W (Zisch/Drieth)	MD Reference:	WELL @ 5123.0ft (Original Well Elev)
Site Error:	0.0ft	North Reference:	True
Reference Well:	Drieth 4C-6H-I368	Survey Calculation Method:	Minimum Curvature
Well Error:	0.0ft	Output errors are at	2.00 sigma
Reference Wellbore	Hz	Database:	USA EDM 5000 Multi Users DB
Reference Design:	Plan #1	Offset TVD Reference:	Offset Datum

Offset Design S6-T3N-R68W (Zisch/Drieth) - Drieth 4B-6H-I368 - Hz - Plan #1												Offset Site Error:	0.0 ft
Survey Program: 0-MWD												Offset Well Error:	0.0 ft
Reference		Offset		Semi Major Axis			Distance					Warning	
Measured Depth (ft)	Vertical Depth (ft)	Measured Depth (ft)	Vertical Depth (ft)	Reference (ft)	Offset (ft)	Highside Toolface (°)	Offset Wellbore Centre +N/-S (ft)	+E/-W (ft)	Between Centres (ft)	Between Ellipses (ft)	Total Uncertainty Axis		Separation Factor
10,300.0	7,280.0	10,099.5	7,060.0	74.6	74.9	57.83	648.8	-2,750.8	413.2	286.0	127.20	3.248	
10,400.0	7,280.0	10,199.5	7,060.0	77.1	77.4	57.83	648.8	-2,850.8	413.2	281.9	131.32	3.146	
10,500.0	7,280.0	10,299.5	7,060.0	79.5	79.8	57.83	648.8	-2,950.8	413.2	277.8	135.45	3.051	
10,600.0	7,280.0	10,399.5	7,060.0	81.9	82.2	57.83	648.8	-3,050.8	413.2	273.6	139.58	2.960	
10,700.0	7,280.0	10,499.5	7,060.0	84.4	84.6	57.83	648.8	-3,150.8	413.2	269.5	143.71	2.875	
10,800.0	7,280.0	10,599.5	7,060.0	86.8	87.1	57.83	648.8	-3,250.8	413.2	265.3	147.85	2.795	
10,900.0	7,280.0	10,699.5	7,060.0	89.3	89.5	57.83	648.8	-3,350.8	413.2	261.2	151.98	2.719	
11,000.0	7,280.0	10,799.5	7,060.0	91.7	92.0	57.83	648.8	-3,450.8	413.2	257.1	156.13	2.646	
11,100.0	7,280.0	10,899.5	7,060.0	94.2	94.4	57.83	648.8	-3,550.8	413.2	252.9	160.27	2.578	
11,200.0	7,280.0	10,999.5	7,060.0	96.6	96.8	57.83	648.8	-3,650.8	413.2	248.8	164.42	2.513	
11,300.0	7,280.0	11,099.5	7,060.0	99.1	99.3	57.83	648.8	-3,750.8	413.2	244.6	168.57	2.451	
11,400.0	7,280.0	11,199.5	7,060.0	101.5	101.7	57.83	648.8	-3,850.8	413.2	240.5	172.72	2.392	
11,500.0	7,280.0	11,299.5	7,060.0	104.0	104.2	57.83	648.8	-3,950.8	413.2	236.3	176.87	2.336	
11,600.0	7,280.0	11,399.5	7,060.0	106.4	106.6	57.83	648.8	-4,050.8	413.2	232.1	181.03	2.282	
11,700.0	7,280.0	11,499.5	7,060.0	108.9	109.1	57.83	648.8	-4,150.8	413.2	228.0	185.18	2.231	
11,701.8	7,280.0	11,501.2	7,060.0	108.9	109.1	57.83	648.8	-4,152.5	413.2	227.9	185.26	2.230	
11,702.4	7,280.0	11,501.8	7,060.0	108.9	109.1	57.83	648.8	-4,153.0	413.2	227.9	185.28	2.230 SF	

Anticollision Report

Company:	EnCana Oil & Gas (USA) Inc	Local Co-ordinate Reference:	Well Drieth 4C-6H-I368
Project:	DJ Wattenberg	TVD Reference:	WELL @ 5123.0ft (Original Well Elev)
Reference Site:	S6-T3N-R68W (Zisch/Drieth)	MD Reference:	WELL @ 5123.0ft (Original Well Elev)
Site Error:	0.0ft	North Reference:	True
Reference Well:	Drieth 4C-6H-I368	Survey Calculation Method:	Minimum Curvature
Well Error:	0.0ft	Output errors are at	2.00 sigma
Reference Wellbore	Hz	Database:	USA EDM 5000 Multi Users DB
Reference Design:	Plan #1	Offset TVD Reference:	Offset Datum

Offset Design S6-T3N-R68W (Zisch/Drieth) - Drieth 4D-6H-I368 - Hz - Plan #1													Offset Site Error:	0.0 ft	
Survey Program: 0-MWD													Offset Well Error:		0.0 ft
Reference		Offset		Semi Major Axis			Distance				Total Uncertainty Axis	Separation Factor	Warning		
Measured Depth (ft)	Vertical Depth (ft)	Measured Depth (ft)	Vertical Depth (ft)	Reference (ft)	Offset (ft)	Highside Toolface (°)	Offset Wellbore Centre +N/-S (ft)	+E/-W (ft)	Between Centres (ft)	Between Ellipses (ft)					
0.0	0.0	0.0	0.0	0.0	0.0	165.67	-10.9	2.8	11.3						
100.0	100.0	100.0	100.0	0.2	0.2	165.67	-10.9	2.8	11.3	11.0	0.30	37.141			
200.0	200.0	200.0	200.0	0.3	0.3	165.67	-10.9	2.8	11.3	10.6	0.65	17.280			
300.0	300.0	300.0	300.0	0.5	0.5	165.67	-10.9	2.8	11.3	10.3	1.00	11.259			
400.0	400.0	400.0	400.0	0.7	0.7	165.67	-10.9	2.8	11.3	9.9	1.35	8.350 CC			
500.0	500.0	500.0	500.0	0.9	0.8	109.36	-10.9	2.8	11.5	9.8	1.70	6.786 ES			
600.0	600.0	600.0	600.0	1.0	1.0	120.60	-10.9	2.8	12.6	10.6	2.05	6.165			
700.0	699.9	699.9	699.9	1.2	1.2	131.54	-11.0	3.7	15.2	12.8	2.41	6.306			
800.0	799.7	799.9	799.9	1.4	1.4	137.58	-11.1	6.3	18.9	16.1	2.76	6.834			
900.0	899.4	899.9	899.8	1.6	1.6	140.22	-11.3	10.6	23.5	20.4	3.13	7.517			
1,000.0	998.9	999.9	999.6	1.8	1.7	140.87	-11.5	16.7	29.0	25.5	3.51	8.255			
1,100.0	1,098.3	1,099.9	1,099.2	2.1	2.0	140.40	-11.8	24.6	35.2	31.3	3.91	9.003			
1,200.0	1,197.4	1,199.8	1,198.7	2.3	2.2	139.32	-12.2	34.1	42.3	37.9	4.34	9.732			
1,300.0	1,296.3	1,299.8	1,298.0	2.6	2.4	137.95	-12.7	45.4	50.1	45.3	4.81	10.425			
1,400.0	1,394.9	1,399.6	1,397.0	2.9	2.7	136.45	-13.3	58.4	58.8	53.5	5.31	11.068			
1,500.0	1,493.4	1,499.5	1,495.8	3.3	2.9	134.47	-13.9	73.2	67.7	61.8	5.86	11.548			
1,600.0	1,591.9	1,599.3	1,594.2	3.6	3.2	131.67	-14.6	89.6	76.3	69.9	6.47	11.806			
1,700.0	1,690.4	1,698.8	1,692.3	3.9	3.6	128.86	-15.3	106.9	85.0	77.9	7.10	11.977			
1,800.0	1,788.9	1,798.4	1,790.3	4.3	3.9	126.57	-16.0	124.2	93.9	86.1	7.74	12.123			
1,900.0	1,887.3	1,897.9	1,888.3	4.6	4.2	124.68	-16.7	141.4	102.8	94.4	8.40	12.249			
2,000.0	1,985.8	1,997.5	1,986.4	4.9	4.5	123.10	-17.5	158.7	111.9	102.8	9.05	12.358			
2,100.0	2,084.3	2,097.0	2,084.4	5.3	4.9	121.75	-18.2	176.0	121.0	111.3	9.72	12.455			
2,200.0	2,182.8	2,196.5	2,182.4	5.6	5.2	120.59	-18.9	193.3	130.2	119.8	10.38	12.540			
2,300.0	2,281.3	2,296.1	2,280.4	6.0	5.5	119.59	-19.6	210.5	139.5	128.4	11.05	12.617			
2,400.0	2,379.7	2,395.6	2,378.5	6.3	5.9	118.71	-20.4	227.8	148.7	137.0	11.73	12.686			
2,500.0	2,478.2	2,495.2	2,476.5	6.7	6.2	117.93	-21.1	245.1	158.0	145.6	12.40	12.748			
2,600.0	2,576.7	2,594.7	2,574.5	7.0	6.5	117.24	-21.8	262.3	167.4	154.3	13.07	12.804			
2,700.0	2,675.2	2,694.3	2,672.6	7.4	6.9	116.62	-22.5	279.6	176.7	163.0	13.75	12.855			
2,800.0	2,773.7	2,793.8	2,770.6	7.7	7.2	116.07	-23.3	296.9	186.1	171.7	14.42	12.902			
2,900.0	2,872.1	2,893.4	2,868.6	8.0	7.6	115.57	-24.0	314.2	195.5	180.4	15.10	12.945			
3,000.0	2,970.6	2,992.9	2,966.7	8.4	7.9	115.11	-24.7	331.4	204.9	189.1	15.78	12.985			
3,100.0	3,069.1	3,092.5	3,064.7	8.7	8.3	114.69	-25.4	348.7	214.3	197.8	16.46	13.021			
3,200.0	3,167.6	3,192.0	3,162.7	9.1	8.6	114.31	-26.2	366.0	223.7	206.6	17.14	13.055			
3,300.0	3,266.1	3,291.5	3,260.8	9.4	9.0	113.96	-26.9	383.2	233.2	215.3	17.82	13.087			
3,400.0	3,364.5	3,391.1	3,358.8	9.8	9.3	113.64	-27.6	400.5	242.6	224.1	18.50	13.116			
3,500.0	3,463.0	3,490.6	3,456.8	10.1	9.6	113.34	-28.3	417.8	252.0	232.9	19.18	13.144			
3,600.0	3,561.5	3,590.2	3,554.9	10.5	10.0	113.06	-29.0	435.0	261.5	241.6	19.86	13.170			
3,700.0	3,660.0	3,690.4	3,653.6	10.8	10.3	112.96	-29.7	451.7	270.8	250.3	20.51	13.204			
3,800.0	3,758.5	3,790.6	3,752.8	11.2	10.6	113.21	-30.4	466.7	279.9	258.8	21.13	13.246			
3,900.0	3,857.0	3,890.9	3,852.2	11.5	10.9	113.79	-30.9	479.9	288.8	267.1	21.72	13.297			
4,000.0	3,955.6	3,991.1	3,951.8	11.9	11.2	114.58	-31.4	491.4	297.1	274.8	22.25	13.351			
4,100.0	4,054.5	4,091.4	4,051.5	12.2	11.4	115.35	-31.8	501.2	304.5	281.7	22.74	13.392			
4,200.0	4,153.7	4,191.7	4,151.5	12.4	11.6	116.11	-32.2	509.2	311.0	287.8	23.17	13.421			
4,300.0	4,253.0	4,292.0	4,251.6	12.7	11.8	116.87	-32.4	515.4	316.6	293.0	23.56	13.439			
4,400.0	4,352.6	4,392.2	4,351.7	12.9	11.9	117.63	-32.6	520.0	321.3	297.4	23.89	13.447			
4,500.0	4,452.3	4,492.4	4,451.9	13.1	12.1	118.39	-32.7	522.7	325.1	301.0	24.18	13.445			
4,600.0	4,552.1	4,592.6	4,552.1	13.3	12.2	119.17	-32.8	523.7	328.1	303.7	24.43	13.432			
4,700.0	4,652.0	4,692.5	4,652.0	13.4	12.3	119.83	-32.8	523.7	330.2	305.5	24.65	13.393			
4,800.0	4,752.0	4,792.5	4,752.0	13.6	12.4	120.22	-32.8	523.7	331.5	306.6	24.88	13.323			
4,900.0	4,852.0	4,892.5	4,852.0	13.7	12.5	-179.16	-32.8	523.7	331.9	313.3	18.58	17.862			
5,000.0	4,952.0	4,992.5	4,952.0	13.8	12.7	-179.16	-32.8	523.7	331.9	313.0	18.90	17.557			
5,100.0	5,052.0	5,092.5	5,052.0	13.9	12.8	-179.16	-32.8	523.7	331.9	312.6	19.23	17.261			

CC - Min centre to center distance or convergent point, SF - min separation factor, ES - min ellipse separation

Anticollision Report

Company:	EnCana Oil & Gas (USA) Inc	Local Co-ordinate Reference:	Well Drieth 4C-6H-I368
Project:	DJ Wattenberg	TVD Reference:	WELL @ 5123.0ft (Original Well Elev)
Reference Site:	S6-T3N-R68W (Zisch/Drieth)	MD Reference:	WELL @ 5123.0ft (Original Well Elev)
Site Error:	0.0ft	North Reference:	True
Reference Well:	Drieth 4C-6H-I368	Survey Calculation Method:	Minimum Curvature
Well Error:	0.0ft	Output errors are at	2.00 sigma
Reference Wellbore	Hz	Database:	USA EDM 5000 Multi Users DB
Reference Design:	Plan #1	Offset TVD Reference:	Offset Datum

Offset Design S6-T3N-R68W (Zisch/Drieth) - Drieth 4D-6H-I368 - Hz - Plan #1													Offset Site Error:	0.0 ft
Survey Program: 0-MWD													Offset Well Error:	0.0 ft
Reference		Offset		Semi Major Axis			Distance				Total Uncertainty Axis	Separation Factor	Warning	
Measured Depth (ft)	Vertical Depth (ft)	Measured Depth (ft)	Vertical Depth (ft)	Reference (ft)	Offset (ft)	Highside Toolface (°)	Offset Wellbore Centre +N/-S (ft)	+E/-W (ft)	Between Centres (ft)	Between Ellipses (ft)				
5,200.0	5,152.0	5,192.5	5,152.0	14.0	12.9	-179.16	-32.8	523.7	331.9	312.3	19.55	16.975		
5,300.0	5,252.0	5,292.5	5,252.0	14.1	13.0	-179.16	-32.8	523.7	331.9	312.0	19.88	16.697		
5,400.0	5,352.0	5,392.5	5,352.0	14.2	13.2	-179.16	-32.8	523.7	331.9	311.7	20.20	16.427		
5,500.0	5,452.0	5,492.5	5,452.0	14.4	13.3	-179.16	-32.8	523.7	331.9	311.3	20.53	16.166		
5,600.0	5,552.0	5,592.5	5,552.0	14.5	13.4	-179.16	-32.8	523.7	331.9	311.0	20.86	15.912		
5,700.0	5,652.0	5,692.5	5,652.0	14.6	13.5	-179.16	-32.8	523.7	331.9	310.7	21.18	15.666		
5,800.0	5,752.0	5,792.5	5,752.0	14.7	13.7	-179.16	-32.8	523.7	331.9	310.4	21.51	15.427		
5,900.0	5,852.0	5,892.5	5,852.0	14.8	13.8	-179.16	-32.8	523.7	331.9	310.0	21.84	15.194		
6,000.0	5,952.0	5,992.5	5,952.0	15.0	13.9	-179.16	-32.8	523.7	331.9	309.7	22.17	14.968		
6,100.0	6,052.0	6,092.5	6,052.0	15.1	14.0	-179.16	-32.8	523.7	331.9	309.4	22.50	14.748		
6,200.0	6,152.0	6,192.5	6,152.0	15.2	14.2	-179.16	-32.8	523.7	331.9	309.0	22.83	14.535		
6,300.0	6,252.0	6,292.5	6,252.0	15.3	14.3	-179.16	-32.8	523.7	331.9	308.7	23.16	14.327		
6,363.7	6,315.7	6,356.2	6,315.7	15.4	14.4	-179.16	-32.8	523.7	331.9	308.5	23.38	14.197		
6,400.0	6,352.0	6,392.4	6,351.9	15.5	14.4	-179.15	-32.8	523.7	331.9	308.4	23.50	14.124		
6,500.0	6,452.0	6,491.0	6,450.0	15.6	14.5	-177.79	-32.8	515.8	332.1	308.2	23.92	13.884		
6,600.0	6,552.0	6,585.6	6,542.4	15.7	14.3	-174.32	-32.8	495.6	333.6	309.1	24.50	13.617		
6,700.0	6,651.7	6,675.3	6,626.9	15.7	14.1	-79.68	-32.8	465.4	337.7	309.5	28.24	11.958		
6,800.0	6,749.8	6,762.3	6,704.5	15.7	13.8	-75.33	-32.8	426.3	343.8	316.3	27.53	12.490		
6,900.0	6,844.2	6,850.0	6,777.4	15.4	13.5	-71.27	-32.8	377.6	351.3	324.6	26.69	13.160		
7,000.0	6,933.2	6,929.6	6,837.9	15.1	13.2	-67.89	-32.7	326.0	359.4	333.5	25.89	13.882		
7,100.0	7,015.0	7,010.7	6,893.3	14.8	13.0	-64.86	-32.7	266.8	367.8	342.6	25.16	14.616		
7,200.0	7,088.0	7,090.4	6,940.9	14.5	12.9	-62.32	-32.7	202.9	375.8	351.2	24.63	15.260		
7,300.0	7,150.9	7,169.1	6,980.7	14.2	13.1	-60.25	-32.7	135.1	383.0	358.6	24.40	15.700		
7,400.0	7,202.2	7,250.0	7,013.6	14.1	13.4	-58.60	-32.7	61.2	389.1	364.6	24.57	15.838		
7,500.0	7,241.2	7,324.1	7,036.2	14.1	14.0	-57.48	-32.7	-9.3	393.8	368.6	25.22	15.614		
7,600.0	7,267.0	7,400.0	7,051.7	15.1	14.8	-56.76	-32.7	-83.6	396.8	370.4	26.37	15.050		
7,700.0	7,279.1	7,477.4	7,059.3	16.3	15.8	-56.46	-32.7	-160.6	398.1	370.0	28.04	14.195		
7,800.0	7,280.0	7,567.6	7,060.0	17.9	17.2	-56.45	-32.7	-250.8	398.1	367.7	30.39	13.101		
7,900.0	7,280.0	7,667.6	7,060.0	19.6	18.9	-56.45	-32.7	-350.8	398.1	364.9	33.21	11.988		
8,000.0	7,280.0	7,767.6	7,060.0	21.4	20.8	-56.45	-32.7	-450.8	398.1	361.8	36.28	10.973		
8,100.0	7,280.0	7,867.6	7,060.0	23.4	22.8	-56.45	-32.7	-550.8	398.1	358.5	39.54	10.067		
8,200.0	7,280.0	7,967.6	7,060.0	25.4	24.8	-56.45	-32.7	-650.8	398.1	355.1	42.96	9.267		
8,300.0	7,280.0	8,067.6	7,060.0	27.6	27.0	-56.45	-32.7	-750.8	398.1	351.6	46.49	8.563		
8,400.0	7,280.0	8,167.6	7,060.0	29.7	29.2	-56.45	-32.7	-850.8	398.1	347.9	50.11	7.944		
8,500.0	7,280.0	8,267.6	7,060.0	32.0	31.4	-56.45	-32.7	-950.8	398.0	344.2	53.81	7.398		
8,600.0	7,280.0	8,367.6	7,060.0	34.2	33.7	-56.45	-32.6	-1,050.8	398.0	340.5	57.56	6.915		
8,700.0	7,280.0	8,467.6	7,060.0	36.5	36.0	-56.45	-32.6	-1,150.8	398.0	336.7	61.36	6.487		
8,800.0	7,280.0	8,567.6	7,060.0	38.8	38.3	-56.45	-32.6	-1,250.8	398.0	332.8	65.21	6.104		
8,900.0	7,280.0	8,667.6	7,060.0	41.1	40.6	-56.45	-32.6	-1,350.8	398.0	328.9	69.08	5.762		
9,000.0	7,280.0	8,767.6	7,060.0	43.4	43.0	-56.45	-32.6	-1,450.8	398.0	325.0	72.98	5.453		
9,100.0	7,280.0	8,867.6	7,060.0	45.8	45.4	-56.44	-32.6	-1,550.8	398.0	321.1	76.91	5.175		
9,200.0	7,280.0	8,967.6	7,060.0	48.2	47.7	-56.44	-32.6	-1,650.8	398.0	317.1	80.86	4.922		
9,300.0	7,280.0	9,067.6	7,060.0	50.5	50.1	-56.44	-32.6	-1,750.8	398.0	313.2	84.82	4.692		
9,400.0	7,280.0	9,167.6	7,060.0	52.9	52.5	-56.44	-32.6	-1,850.8	398.0	309.2	88.80	4.482		
9,500.0	7,280.0	9,267.6	7,060.0	55.3	54.9	-56.44	-32.6	-1,950.8	398.0	305.2	92.80	4.289		
9,600.0	7,280.0	9,367.6	7,060.0	57.7	57.3	-56.44	-32.6	-2,050.8	398.0	301.2	96.80	4.111		
9,700.0	7,280.0	9,467.6	7,060.0	60.1	59.7	-56.44	-32.6	-2,150.8	398.0	297.2	100.81	3.948		
9,800.0	7,280.0	9,567.6	7,060.0	62.5	62.2	-56.44	-32.6	-2,250.8	398.0	293.1	104.84	3.796		
9,900.0	7,280.0	9,667.6	7,060.0	64.9	64.6	-56.44	-32.6	-2,350.8	398.0	289.1	108.87	3.656		
10,000.0	7,280.0	9,767.6	7,060.0	67.4	67.0	-56.44	-32.6	-2,450.8	398.0	285.1	112.90	3.525		
10,100.0	7,280.0	9,867.6	7,060.0	69.8	69.4	-56.44	-32.5	-2,550.8	398.0	281.0	116.95	3.403		
10,200.0	7,280.0	9,967.6	7,060.0	72.2	71.9	-56.44	-32.5	-2,650.8	397.9	277.0	121.00	3.289		

CC - Min centre to center distance or convergent point, SF - min separation factor, ES - min ellipse separation

Anticollision Report

Company:	EnCana Oil & Gas (USA) Inc	Local Co-ordinate Reference:	Well Drieth 4C-6H-I368
Project:	DJ Wattenberg	TVD Reference:	WELL @ 5123.0ft (Original Well Elev)
Reference Site:	S6-T3N-R68W (Zisch/Drieth)	MD Reference:	WELL @ 5123.0ft (Original Well Elev)
Site Error:	0.0ft	North Reference:	True
Reference Well:	Drieth 4C-6H-I368	Survey Calculation Method:	Minimum Curvature
Well Error:	0.0ft	Output errors are at	2.00 sigma
Reference Wellbore	Hz	Database:	USA EDM 5000 Multi Users DB
Reference Design:	Plan #1	Offset TVD Reference:	Offset Datum

Offset Design													Offset Site Error:	0.0 ft	
Survey Program: 0-MWD													Offset Well Error:		0.0 ft
Reference		Offset		Semi Major Axis			Distance						Warning		
Measured Depth (ft)	Vertical Depth (ft)	Measured Depth (ft)	Vertical Depth (ft)	Reference (ft)	Offset (ft)	Highside Toolface (°)	Offset Wellbore Centre +N/-S (ft)	+E/-W (ft)	Between Centres (ft)	Between Ellipses (ft)	Total Uncertainty Axis	Separation Factor			
10,300.0	7,280.0	10,067.6	7,060.0	74.6	74.3	-56.44	-32.5	-2,750.8	397.9	272.9	125.05	3.182			
10,400.0	7,280.0	10,167.6	7,060.0	77.1	76.7	-56.44	-32.5	-2,850.8	397.9	268.8	129.11	3.082			
10,500.0	7,280.0	10,267.6	7,060.0	79.5	79.2	-56.44	-32.5	-2,950.8	397.9	264.8	133.18	2.988			
10,600.0	7,280.0	10,367.6	7,060.0	81.9	81.6	-56.44	-32.5	-3,050.8	397.9	260.7	137.24	2.899			
10,700.0	7,280.0	10,467.6	7,060.0	84.4	84.1	-56.44	-32.5	-3,150.8	397.9	256.6	141.32	2.816			
10,800.0	7,280.0	10,567.6	7,060.0	86.8	86.5	-56.43	-32.5	-3,250.8	397.9	252.5	145.39	2.737			
10,900.0	7,280.0	10,667.6	7,060.0	89.3	89.0	-56.43	-32.5	-3,350.8	397.9	248.4	149.47	2.662			
11,000.0	7,280.0	10,767.6	7,060.0	91.7	91.4	-56.43	-32.5	-3,450.8	397.9	244.4	153.55	2.591			
11,100.0	7,280.0	10,867.6	7,060.0	94.2	93.9	-56.43	-32.5	-3,550.8	397.9	240.3	157.63	2.524			
11,200.0	7,280.0	10,967.6	7,060.0	96.6	96.3	-56.43	-32.5	-3,650.8	397.9	236.2	161.71	2.460			
11,300.0	7,280.0	11,067.6	7,060.0	99.1	98.8	-56.43	-32.5	-3,750.8	397.9	232.1	165.80	2.400			
11,400.0	7,280.0	11,167.6	7,060.0	101.5	101.2	-56.43	-32.5	-3,850.8	397.9	228.0	169.89	2.342			
11,500.0	7,280.0	11,267.6	7,060.0	104.0	103.7	-56.43	-32.4	-3,950.8	397.9	223.9	173.98	2.287			
11,600.0	7,280.0	11,367.6	7,060.0	106.4	106.1	-56.43	-32.4	-4,050.8	397.9	219.8	178.07	2.234			
11,700.0	7,280.0	11,467.6	7,060.0	108.9	108.6	-56.43	-32.4	-4,150.8	397.9	215.7	182.16	2.184			
11,702.4	7,280.0	11,470.0	7,060.0	108.9	108.6	-56.43	-32.4	-4,153.1	397.9	215.6	182.26	2.183 SF			

Anticollision Report

Company:	EnCana Oil & Gas (USA) Inc	Local Co-ordinate Reference:	Well Drieth 4C-6H-I368
Project:	DJ Wattenberg	TVD Reference:	WELL @ 5123.0ft (Original Well Elev)
Reference Site:	S6-T3N-R68W (Zisch/Drieth)	MD Reference:	WELL @ 5123.0ft (Original Well Elev)
Site Error:	0.0ft	North Reference:	True
Reference Well:	Drieth 4C-6H-I368	Survey Calculation Method:	Minimum Curvature
Well Error:	0.0ft	Output errors are at	2.00 sigma
Reference Wellbore	Hz	Database:	USA EDM 5000 Multi Users DB
Reference Design:	Plan #1	Offset TVD Reference:	Offset Datum

Offset Design S6-T3N-R68W (Zisch/Drieth) - Drieth 4E-6H-I368 - Hz - Plan #1													Offset Site Error:	0.0 ft
Survey Program: 0-MWD													Offset Well Error:	0.0 ft
Reference		Offset		Semi Major Axis			Distance						Warning	
Measured Depth (ft)	Vertical Depth (ft)	Measured Depth (ft)	Vertical Depth (ft)	Reference (ft)	Offset (ft)	Highside Toolface (°)	Offset Wellbore Centre +N/-S (ft)	+E/-W (ft)	Between Centres (ft)	Between Ellipses (ft)	Total Uncertainty Axis	Separation Factor		
0.0	0.0	0.0	0.0	0.0	0.0	171.29	-18.2	2.8	18.4					
100.0	100.0	100.0	100.0	0.2	0.2	171.29	-18.2	2.8	18.4	18.1	0.30	60.677		
200.0	200.0	200.0	200.0	0.3	0.3	171.29	-18.2	2.8	18.4	17.8	0.65	28.230		
300.0	300.0	300.0	300.0	0.5	0.5	171.29	-18.2	2.8	18.4	17.4	1.00	18.394		
400.0	400.0	400.0	400.0	0.7	0.7	171.29	-18.2	2.8	18.4	17.1	1.35	13.641 CC, ES		
500.0	500.0	499.8	499.8	0.9	0.9	111.32	-18.7	3.5	19.3	17.6	1.70	11.373		
600.0	600.0	599.5	599.4	1.0	1.0	112.67	-20.2	5.6	22.1	20.0	2.05	10.749 SF		
700.0	699.9	699.1	699.0	1.2	1.2	114.28	-22.7	9.2	26.7	24.2	2.42	11.034		
800.0	799.7	798.6	798.2	1.4	1.4	115.78	-26.1	14.2	33.1	30.3	2.79	11.855		
900.0	899.4	897.8	897.2	1.6	1.6	117.01	-30.5	20.5	41.4	38.2	3.18	12.990		
1,000.0	998.9	996.8	995.8	1.8	1.8	117.96	-35.9	28.3	51.5	47.9	3.60	14.300		
1,100.0	1,098.3	1,095.5	1,093.8	2.1	2.1	118.67	-42.3	37.4	63.5	59.4	4.04	15.691		
1,200.0	1,197.4	1,193.9	1,191.3	2.3	2.3	119.19	-49.6	47.9	77.3	72.7	4.52	17.097		
1,300.0	1,296.3	1,291.8	1,288.2	2.6	2.6	119.58	-57.7	59.7	92.9	87.8	5.03	18.477		
1,400.0	1,394.9	1,389.4	1,384.4	2.9	2.9	119.85	-66.8	72.8	110.2	104.7	5.57	19.800		
1,500.0	1,493.4	1,486.5	1,480.0	3.3	3.2	119.88	-76.8	87.1	129.0	122.9	6.14	21.017		
1,600.0	1,591.9	1,583.2	1,574.8	3.6	3.6	119.36	-87.7	102.8	148.7	141.9	6.73	22.090		
1,700.0	1,690.4	1,680.8	1,670.3	3.9	4.0	118.65	-99.3	119.4	169.0	161.6	7.34	23.034		
1,800.0	1,788.9	1,778.7	1,766.1	4.3	4.3	118.09	-110.9	136.1	189.3	181.4	7.95	23.815		
1,900.0	1,887.3	1,876.6	1,861.8	4.6	4.7	117.63	-122.5	152.8	209.7	201.1	8.57	24.470		
2,000.0	1,985.8	1,974.5	1,957.6	4.9	5.1	117.26	-134.1	169.5	230.0	220.8	9.19	25.027		
2,100.0	2,084.3	2,072.4	2,053.3	5.3	5.5	116.94	-145.7	186.3	250.4	240.6	9.82	25.504		
2,200.0	2,182.8	2,170.3	2,149.1	5.6	5.9	116.67	-157.3	203.0	270.8	260.3	10.45	25.918		
2,300.0	2,281.3	2,268.2	2,244.8	6.0	6.2	116.44	-169.0	219.7	291.2	280.1	11.08	26.280		
2,400.0	2,379.7	2,366.1	2,340.6	6.3	6.6	116.25	-180.6	236.4	311.6	299.8	11.71	26.598		
2,500.0	2,478.2	2,464.0	2,436.4	6.7	7.0	116.07	-192.2	253.1	331.9	319.6	12.35	26.881		
2,600.0	2,576.7	2,561.9	2,532.1	7.0	7.4	115.92	-203.8	269.8	352.3	339.4	12.99	27.133		
2,700.0	2,675.2	2,659.8	2,627.9	7.4	7.8	115.78	-215.4	286.5	372.7	359.1	13.62	27.359		
2,800.0	2,773.7	2,757.7	2,723.6	7.7	8.2	115.65	-227.0	303.2	393.1	378.9	14.26	27.563		
2,900.0	2,872.1	2,855.6	2,819.4	8.0	8.6	115.54	-238.7	320.0	413.5	398.6	14.90	27.748		
3,000.0	2,970.6	2,953.5	2,915.1	8.4	9.0	115.44	-250.3	336.7	433.9	418.4	15.54	27.916		
3,100.0	3,069.1	3,051.4	3,010.9	8.7	9.4	115.35	-261.9	353.4	454.3	438.1	16.19	28.070		
3,200.0	3,167.6	3,149.3	3,106.6	9.1	9.8	115.27	-273.5	370.1	474.7	457.9	16.83	28.211		
3,300.0	3,266.1	3,247.1	3,202.4	9.4	10.2	115.19	-285.1	386.8	495.1	477.7	17.47	28.341		

CC - Min centre to center distance or convergent point, SF - min separation factor, ES - min ellipse separation

Anticollision Report

Company:	EnCana Oil & Gas (USA) Inc	Local Co-ordinate Reference:	Well Drieth 4C-6H-I368
Project:	DJ Wattenberg	TVD Reference:	WELL @ 5123.0ft (Original Well Elev)
Reference Site:	S6-T3N-R68W (Zisch/Drieth)	MD Reference:	WELL @ 5123.0ft (Original Well Elev)
Site Error:	0.0ft	North Reference:	True
Reference Well:	Drieth 4C-6H-I368	Survey Calculation Method:	Minimum Curvature
Well Error:	0.0ft	Output errors are at	2.00 sigma
Reference Wellbore	Hz	Database:	USA EDM 5000 Multi Users DB
Reference Design:	Plan #1	Offset TVD Reference:	Offset Datum

Offset Design													Offset Site Error:	0.0 ft
S6-T3N-R68W (Zisch/Drieth) - Drieth 4F-6H-I368 - Hz - Plan #1													Offset Well Error:	0.0 ft
Survey Program: 0-MWD														
Reference		Offset		Semi Major Axis			Distance						Warning	
Measured Depth (ft)	Vertical Depth (ft)	Measured Depth (ft)	Vertical Depth (ft)	Reference (ft)	Offset (ft)	Highside Toolface (°)	Offset Wellbore Centre +N/-S (ft)	+E/-W (ft)	Between Centres (ft)	Between Ellipses (ft)	Total Uncertainty Axis	Separation Factor		
0.0	0.0	1.0	1.0	0.0	0.0	174.53	-29.1	2.8	29.3					
100.0	100.0	101.0	101.0	0.2	0.2	174.53	-29.1	2.8	29.3	29.0	0.31	95.852		
200.0	200.0	201.0	201.0	0.3	0.3	174.53	-29.1	2.8	29.3	28.6	0.65	44.731		
266.3	266.3	267.3	267.3	0.4	0.4	174.53	-29.1	2.8	29.3	28.4	0.89	33.042 CC		
300.0	300.0	301.0	301.0	0.5	0.5	174.53	-29.1	2.8	29.3	28.3	1.00	29.173 ES		
400.0	400.0	400.6	400.5	0.7	0.7	173.65	-29.8	3.3	30.0	28.7	1.35	22.216		
500.0	500.0	500.0	500.0	0.9	0.9	112.20	-31.9	4.9	32.6	30.9	1.70	19.184		
600.0	600.0	599.4	599.3	1.0	1.0	112.57	-35.4	7.5	37.4	35.4	2.06	18.207 SF		
700.0	699.9	698.5	698.2	1.2	1.2	113.77	-40.2	11.1	44.4	42.0	2.42	18.361		
800.0	799.7	797.4	796.8	1.4	1.4	115.32	-46.4	15.7	53.5	50.7	2.79	19.185		
900.0	899.4	895.9	894.8	1.6	1.7	116.90	-53.9	21.4	64.9	61.7	3.18	20.415		
1,000.0	998.9	993.9	992.2	1.8	1.9	118.36	-62.7	28.0	78.5	75.0	3.59	21.884		
1,100.0	1,098.3	1,091.5	1,089.0	2.1	2.2	119.63	-72.8	35.6	94.4	90.4	4.02	23.478		
1,200.0	1,197.4	1,188.4	1,184.9	2.3	2.5	120.71	-84.1	44.1	112.5	108.0	4.48	25.122		
1,300.0	1,296.3	1,284.7	1,279.9	2.6	2.8	121.61	-96.6	53.5	132.8	127.8	4.96	26.763		
1,400.0	1,394.9	1,380.3	1,373.9	2.9	3.1	122.36	-110.3	63.8	155.2	149.8	5.47	28.364		
1,500.0	1,493.4	1,475.2	1,467.0	3.3	3.4	122.96	-125.2	74.9	179.4	173.4	6.01	29.870		
1,600.0	1,591.9	1,569.6	1,559.2	3.6	3.8	123.11	-141.2	86.9	204.8	198.3	6.56	31.243		
1,700.0	1,690.4	1,663.3	1,650.5	3.9	4.2	122.97	-158.2	99.7	231.4	224.3	7.12	32.508		
1,800.0	1,788.9	1,756.4	1,740.8	4.3	4.6	122.63	-176.4	113.3	259.2	251.5	7.69	33.689		
1,900.0	1,887.3	1,850.6	1,831.8	4.6	5.0	122.16	-195.7	127.9	287.9	279.7	8.28	34.783		
2,000.0	1,985.8	1,946.3	1,924.3	4.9	5.5	121.76	-215.6	142.8	316.9	308.0	8.87	35.715		
2,100.0	2,084.3	2,042.0	2,016.7	5.3	5.9	121.42	-235.4	157.6	345.8	336.3	9.47	36.518		
2,200.0	2,182.8	2,137.7	2,109.1	5.6	6.4	121.13	-255.2	172.5	374.7	364.7	10.07	37.217		
2,300.0	2,281.3	2,233.4	2,201.6	6.0	6.8	120.89	-275.0	187.4	403.7	393.0	10.67	37.830		
2,400.0	2,379.7	2,329.1	2,294.0	6.3	7.3	120.68	-294.8	202.2	432.7	421.4	11.28	38.371		
2,500.0	2,478.2	2,424.8	2,386.5	6.7	7.8	120.49	-314.6	217.1	461.6	449.7	11.88	38.853		
2,600.0	2,576.7	2,520.5	2,478.9	7.0	8.2	120.33	-334.4	232.0	490.6	478.1	12.49	39.283		

CC - Min centre to center distance or convergent point, SF - min separation factor, ES - min ellipse separation

Anticollision Report

Company:	EnCana Oil & Gas (USA) Inc	Local Co-ordinate Reference:	Well Drieth 4C-6H-I368
Project:	DJ Wattenberg	TVD Reference:	WELL @ 5123.0ft (Original Well Elev)
Reference Site:	S6-T3N-R68W (Zisch/Drieth)	MD Reference:	WELL @ 5123.0ft (Original Well Elev)
Site Error:	0.0ft	North Reference:	True
Reference Well:	Drieth 4C-6H-I368	Survey Calculation Method:	Minimum Curvature
Well Error:	0.0ft	Output errors are at	2.00 sigma
Reference Wellbore	Hz	Database:	USA EDM 5000 Multi Users DB
Reference Design:	Plan #1	Offset TVD Reference:	Offset Datum

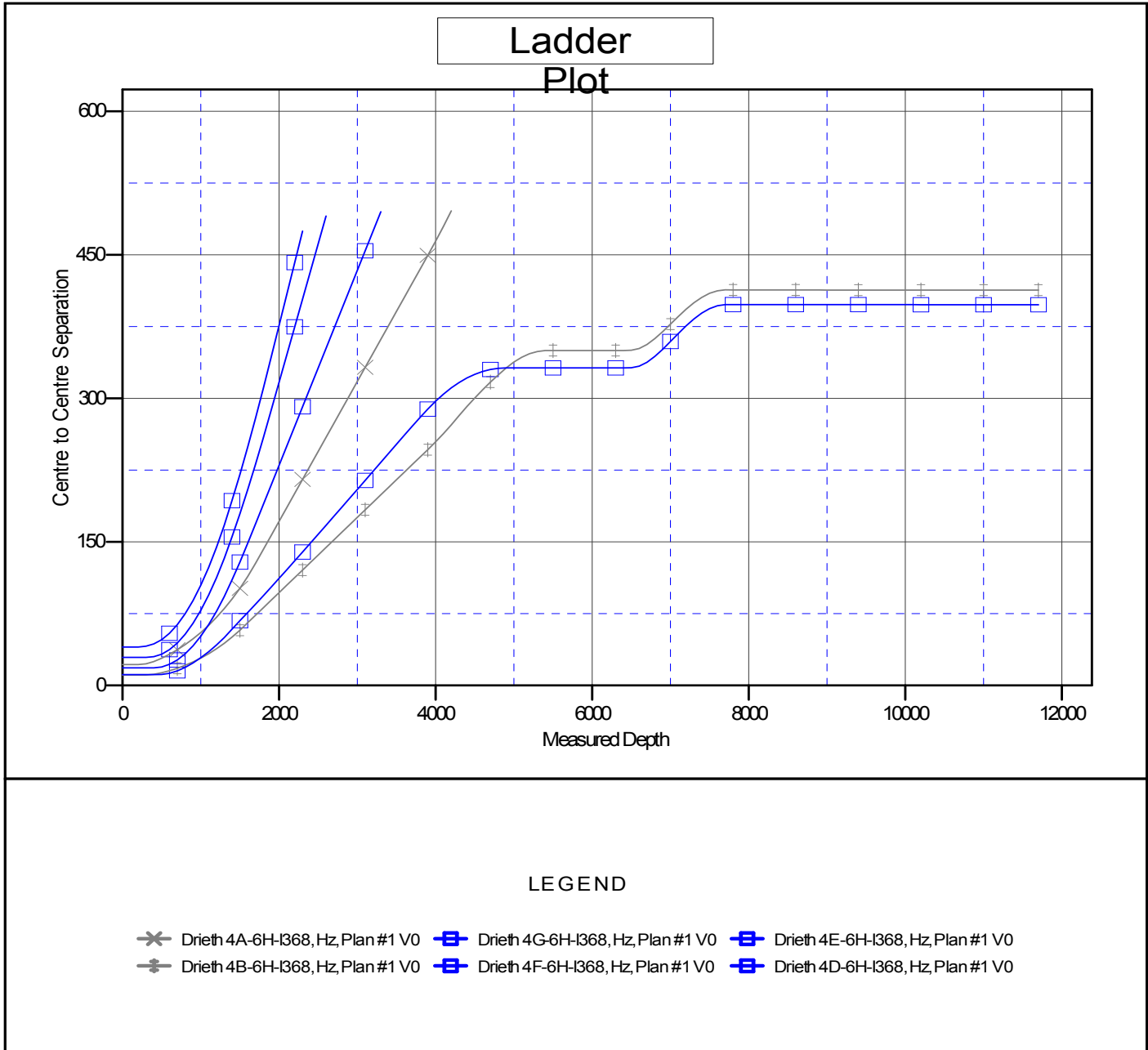
Offset Design													Offset Site Error:	0.0 ft
S6-T3N-R68W (Zisch/Drieth) - Drieth 4G-6H-I368 - Hz - Plan #1													Offset Well Error:	0.0 ft
Survey Program: 0-MWD														
Reference		Offset		Semi Major Axis			Distance						Warning	
Measured Depth (ft)	Vertical Depth (ft)	Measured Depth (ft)	Vertical Depth (ft)	Reference (ft)	Offset (ft)	Highside Toolface (°)	Offset Wellbore Centre +N/-S (ft)	+E/-W (ft)	Between Centres (ft)	Between Ellipses (ft)	Total Uncertainty Axis	Separation Factor		
0.0	0.0	1.0	1.0	0.0	0.0	176.02	-40.1	2.8	40.2					
100.0	100.0	101.0	101.0	0.2	0.2	176.02	-40.1	2.8	40.2	39.9	0.31	131.514		
166.3	166.3	167.3	167.3	0.3	0.3	176.02	-40.1	2.8	40.2	39.6	0.54	74.806 CC		
200.0	200.0	201.0	201.0	0.3	0.3	176.02	-40.1	2.8	40.2	39.5	0.65	61.374 ES		
300.0	300.0	300.3	300.3	0.5	0.5	175.54	-40.9	3.2	41.0	40.0	1.00	40.871		
400.0	400.0	399.6	399.6	0.7	0.7	174.23	-43.2	4.4	43.4	42.1	1.35	32.095		
500.0	500.0	498.8	498.7	0.9	0.9	112.77	-47.0	6.3	47.8	46.1	1.70	28.126		
600.0	600.0	597.7	597.4	1.0	1.1	113.04	-52.4	9.0	54.5	52.5	2.05	26.559		
700.0	699.9	696.4	695.8	1.2	1.3	114.11	-59.2	12.5	63.6	61.1	2.41	26.332 SF		
800.0	799.7	794.6	793.5	1.4	1.5	115.57	-67.6	16.7	74.9	72.1	2.79	26.899		
900.0	899.4	892.4	890.7	1.6	1.7	117.15	-77.3	21.7	88.6	85.5	3.17	27.955		
1,000.0	998.9	989.5	987.0	1.8	2.0	118.69	-88.5	27.4	104.8	101.2	3.57	29.309		
1,100.0	1,098.3	1,086.1	1,082.5	2.1	2.3	120.10	-101.0	33.7	123.3	119.3	4.00	30.834		
1,200.0	1,197.4	1,181.8	1,177.0	2.3	2.6	121.35	-114.9	40.8	144.2	139.7	4.44	32.446		
1,300.0	1,296.3	1,276.8	1,270.5	2.6	2.9	122.44	-130.0	48.4	167.5	162.5	4.91	34.083		
1,400.0	1,394.9	1,370.9	1,362.7	2.9	3.3	123.37	-146.4	56.7	193.1	187.7	5.41	35.708		
1,500.0	1,493.4	1,464.1	1,453.9	3.3	3.6	124.22	-163.9	65.6	220.6	214.7	5.92	37.258		
1,600.0	1,591.9	1,556.7	1,544.1	3.6	4.0	124.69	-182.6	75.1	249.4	243.0	6.44	38.701		
1,700.0	1,690.4	1,648.5	1,633.1	3.9	4.4	124.88	-202.5	85.2	279.5	272.5	6.98	40.056		
1,800.0	1,788.9	1,739.6	1,721.1	4.3	4.9	124.87	-223.4	95.8	310.9	303.4	7.52	41.338		
1,900.0	1,887.3	1,831.3	1,809.3	4.6	5.3	124.74	-245.7	107.1	343.5	335.4	8.07	42.546		
2,000.0	1,985.8	1,925.7	1,900.1	4.9	5.8	124.59	-268.9	118.9	376.3	367.7	8.64	43.576		
2,100.0	2,084.3	2,020.2	1,990.9	5.3	6.3	124.47	-292.1	130.7	409.1	399.9	9.20	44.463		
2,200.0	2,182.8	2,114.6	2,081.7	5.6	6.7	124.36	-315.3	142.4	442.0	432.2	9.77	45.236		
2,300.0	2,281.3	2,209.1	2,172.5	6.0	7.2	124.27	-338.6	154.2	474.8	464.5	10.34	45.913		

CC - Min centre to center distance or convergent point, SF - min separation factor, ES - min ellipse separation

Anticollision Report

Company: EnCana Oil & Gas (USA) Inc	Local Co-ordinate Reference: Well Drieth 4C-6H-I368	
Project: DJ Wattenberg	TVD Reference: WELL @ 5123.0ft (Original Well Elev)	
Reference Site: S6-T3N-R68W (Zisch/Drieth)	MD Reference: WELL @ 5123.0ft (Original Well Elev)	
Site Error: 0.0ft	North Reference: True	
Reference Well: Drieth 4C-6H-I368	Survey Calculation Method: Minimum Curvature	
Well Error: 0.0ft	Output errors are at 2.00 sigma	
Reference Wellbore Hz	Database: USA EDM 5000 Multi Users DB	
Reference Design: Plan #1	Offset TVD Reference: Offset Datum	

Reference Depths are relative to WELL @ 5123.0ft (Original Well Elev) Coordinates are relative to: Drieth 4C-6H-I368
 Offset Depths are relative to Offset Datum Coordinate System is US State Plane 1983, Colorado Northern Zone
 Central Meridian is -105.500000 ° Grid Convergence at Surface is: 0.30°



CC - Min centre to center distance or convergent point, SF - min separation factor, ES - min ellipse separation