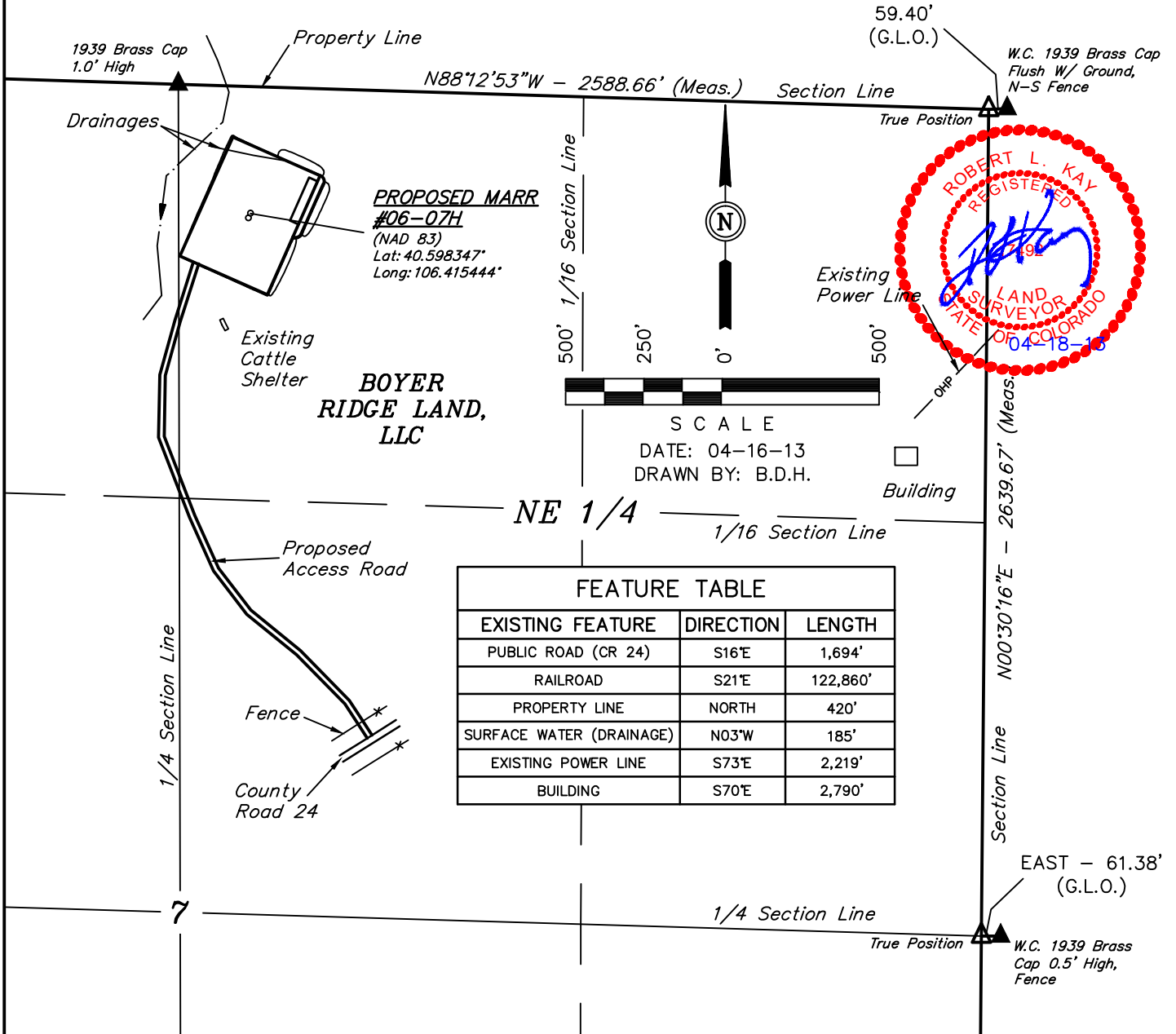


EE3 LLC.

FIGURE #5

LOCATION DRAWING FOR
HEBRON #02-07H & MARR #06-07H
SECTION 7, T7N, R80W, 6th P.M.
NW 1/4 NE 1/4



FEATURE TABLE

EXISTING FEATURE	DIRECTION	LENGTH
PUBLIC ROAD (CR 24)	S16°E	1,694'
RAILROAD	S21°E	122,860'
PROPERTY LINE	NORTH	420'
SURFACE WATER (DRAINAGE)	N03°W	185'
EXISTING POWER LINE	S73°E	2,219'
BUILDING	S70°E	2,790'

PLANT COMMUNITY

- ☐ DISTURBED GRASSLAND
- ☐ NATIVE GRASSLAND
- ☐ SHRUB LAND
- ☐ PLAINS RIPARIAN
- ☐ MOUNTAIN RIPARIAN
- ☐ FOREST LAND
- ☐ WETLANDS AQUATIC
- ☐ ALPINE
- ☐ OTHER (Describe): _____

CURRENT LAND USE

- CROP LAND: ☐ IRRIGATED ☐ DRY LAND ☐ IMPROVED PASTURE ☐ HAY MEADOW ☐ CRP
- NON-CROP LAND: ☐ RANGELAND ☐ TIMBER ☐ RECREATIONAL ☐ OTHER (Describe) _____
- SUBDIVIDED: ☐ INDUSTRIAL ☐ COMMERCIAL ☐ RESIDENTIAL _____

FUTURE LAND USE

- CROP LAND: ☐ IRRIGATED ☐ DRY LAND ☐ IMPROVED PASTURE ☐ HAY MEADOW ☐ CRP
- NON-CROP LAND: ☐ RANGELAND ☐ TIMBER ☐ RECREATIONAL ☐ OTHER (Describe) _____
- SUBDIVIDED: ☐ INDUSTRIAL ☐ COMMERCIAL ☐ RESIDENTIAL _____

EE3 LLC.

LOCATION DRAWING DETAIL FOR
HEBRON #02-07H & MARR #06-07H
SECTION 7, T7N, R80W, 6th P.M.
NW 1/4 NE 1/4

FIGURE #5A

SCALE: 1" = 200'
DATE: 04-17-13
DRAWN BY: B.D.H.

LINE TABLE		
LINE	DIRECTION	LENGTH
L1	S15°W	347'
L2	N44°W	272'
L3	N03°E	185'
L4	S28°W	123'
L5	N34°W	52'



SECTION 6
SECTION 7

400' Offset
from Edge of
Disturbance

Existing
Drainage

Existing
Drainage

Reserve Pit Backfill
& Spoils Stockpile

PROPOSED MARR
#06-07H
(NAD 83)
Lat: 40.598347°
Long: 106.415444°

Topsoil
Stockpile

Existing
Cattle
Shelter

Proposed
Access Road