

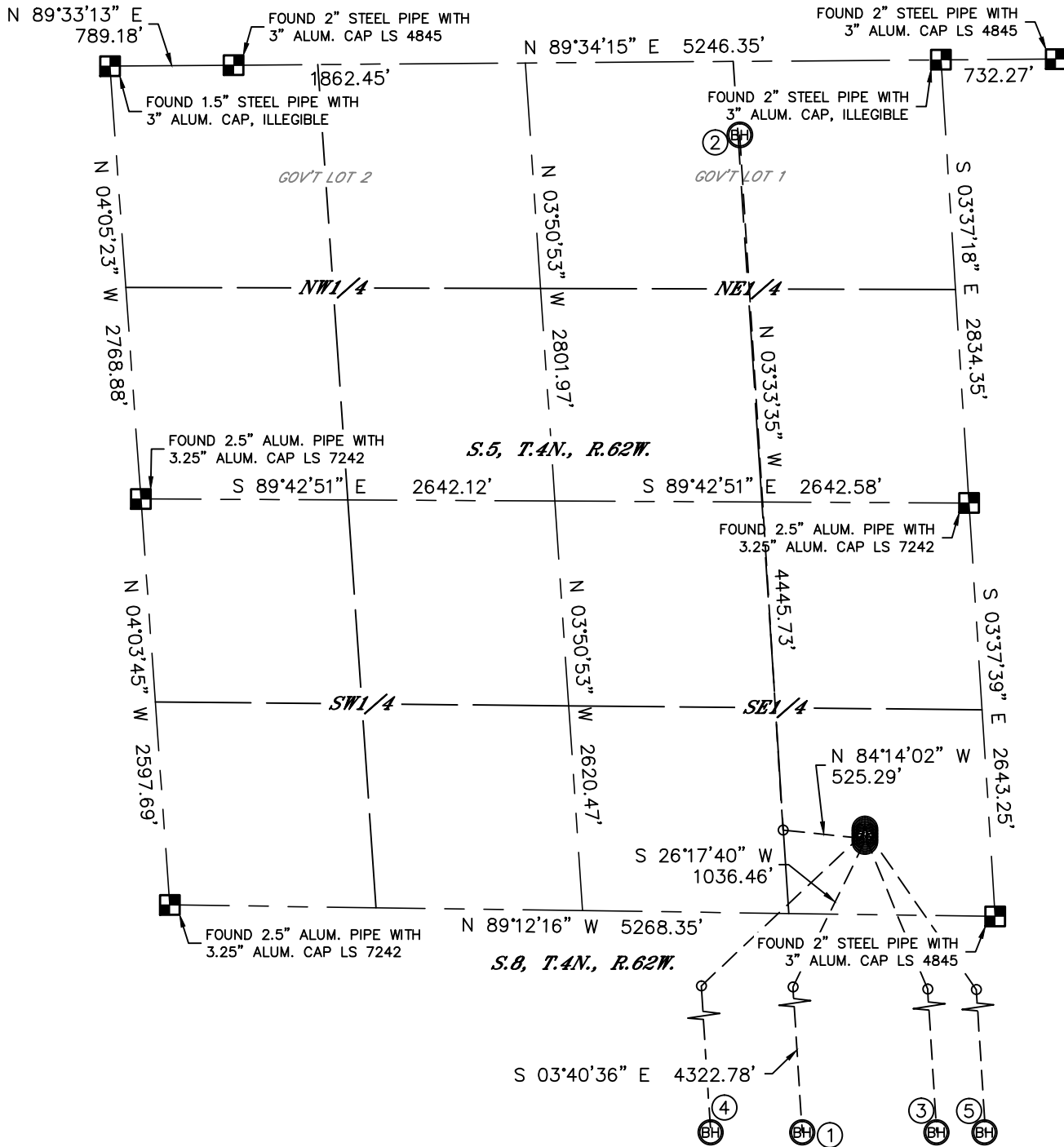


MULTI-WELL PLAN

SECTION: 5
TOWNSHIP: 4N
RANGE: 62W

SEVENTY HOLES 44-5 PAD

THIS MAP DOES NOT REPRESENT A BOUNDARY SURVEY



①
SURFACE LOCATION
SEVENTY HOLES P-T-8HNB
466' FSL
800' FEL
LAT-40.33528°N
LONG-104.34291°W

②
SURFACE LOCATION
SEVENTY HOLES T-P-5HNB
485' FSL
799' FEL
LAT-40.33534°N
LONG-104.34291°W

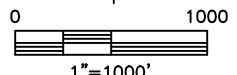
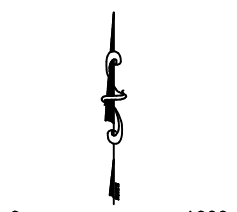
③
SURFACE LOCATION
SEVENTY HOLES A3
506' FSL
797' FEL
LAT-40.33539°N
LONG-104.34291°W

④
SURFACE LOCATION
SEVENTY HOLES A4
526' FSL
796' FEL
LAT-40.33545°N
LONG-104.34291°W

⑤
SURFACE LOCATION
SEVENTY HOLES A5
546' FSL
795' FEL
LAT-40.33550°N
LONG-104.34291°W

LEGEND

- = ALIQUOT MONUMENT AS DESCRIBED
- = CALCULATED POSITION



1"=1000'
DATE: rev.1/23/2013
PROJECT#: 2012024

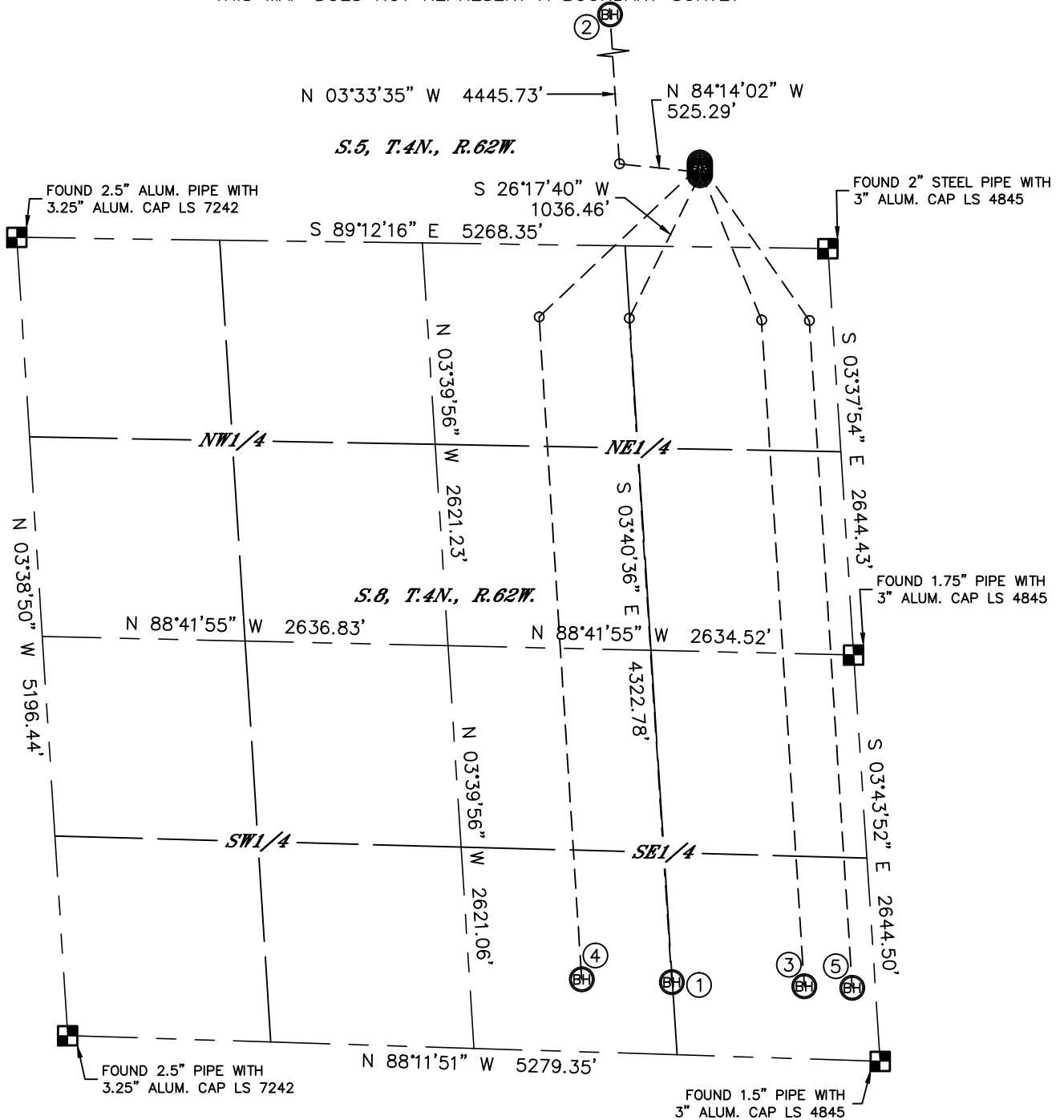


MULTI-WELL PLAN

SEVENTY HOLES 44-5 PAD

THIS MAP DOES NOT REPRESENT A BOUNDARY SURVEY

SECTION: 5
TOWNSHIP: 4N
RANGE: 62W



①
 SURFACE LOCATION
 SEVENTY HOLES P-T-8HNB
 466' FSL
 800' FEL
 LAT-40.33528°N
 LONG-104.34291°W

②
 SURFACE LOCATION
 SEVENTY HOLES T-P-5HNB
 485' FSL
 799' FEL
 LAT-40.33534°N
 LONG-104.34291°W

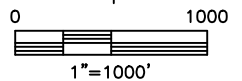
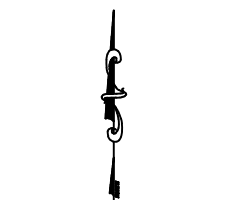
③
 SURFACE LOCATION
 SEVENTY HOLES A3
 506' FSL
 797' FEL
 LAT-40.33539°N
 LONG-104.34291°W

④
 SURFACE LOCATION
 SEVENTY HOLES A4
 526' FSL
 796' FEL
 LAT-40.33545°N
 LONG-104.34291°W

⑤
 SURFACE LOCATION
 SEVENTY HOLES A5
 546' FSL
 795' FEL
 LAT-40.33550°N
 LONG-104.34291°W

LEGEND

- = ALIQUOT MONUMENT AS DESCRIBED
- = CALCULATED POSITION



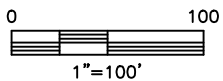
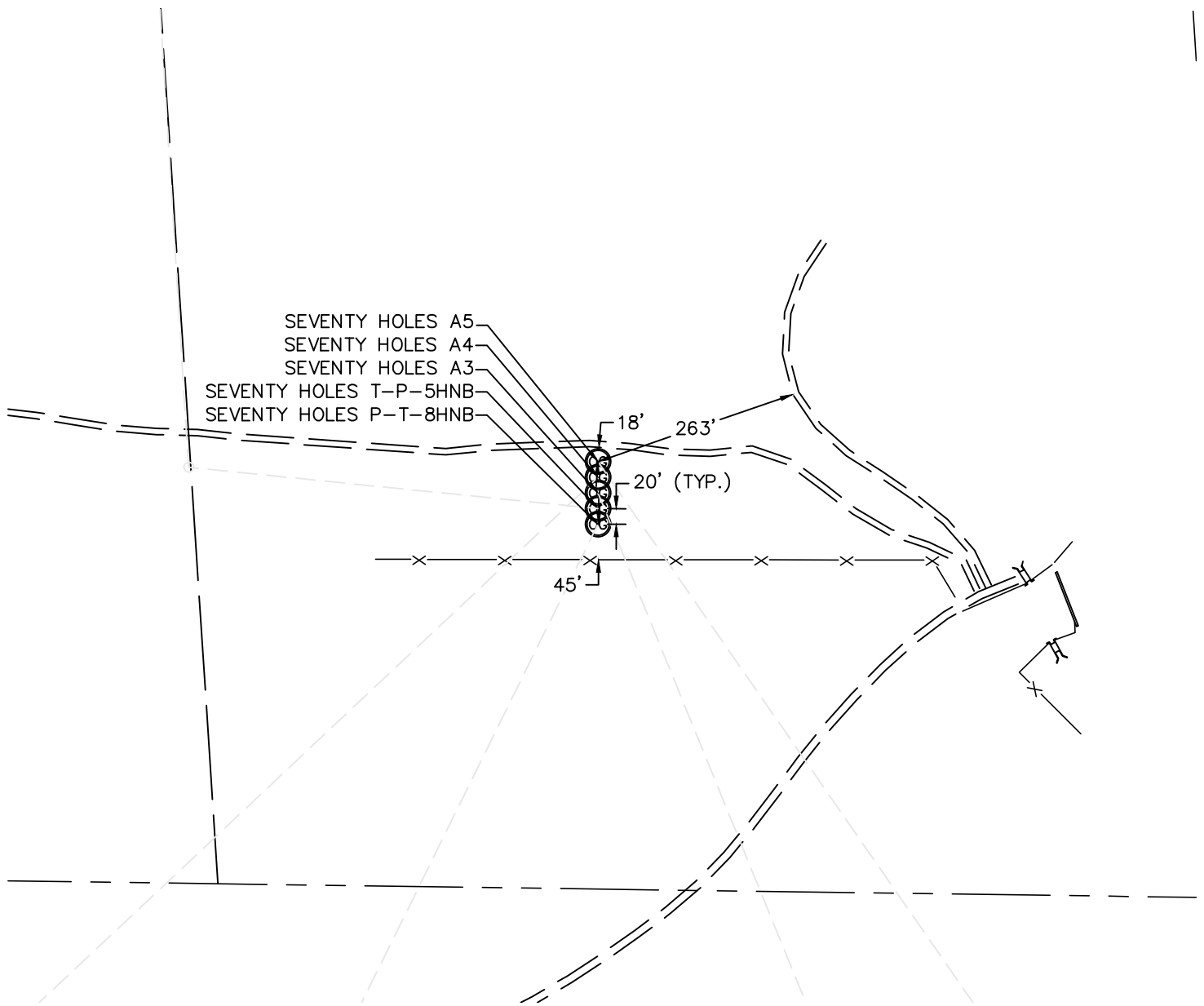


Lat40°, Inc. 1635 Foxtrail Drive, Suite 325 Loveland, CO 970-776-3321

MULTI-WELL PLAN

SEVENTY HOLES 44-5 PAD

SECTION: 5
TOWNSHIP: 4N
RANGE: 62W



DATE: rev.1/23/2013
PROJECT#: 2012024