

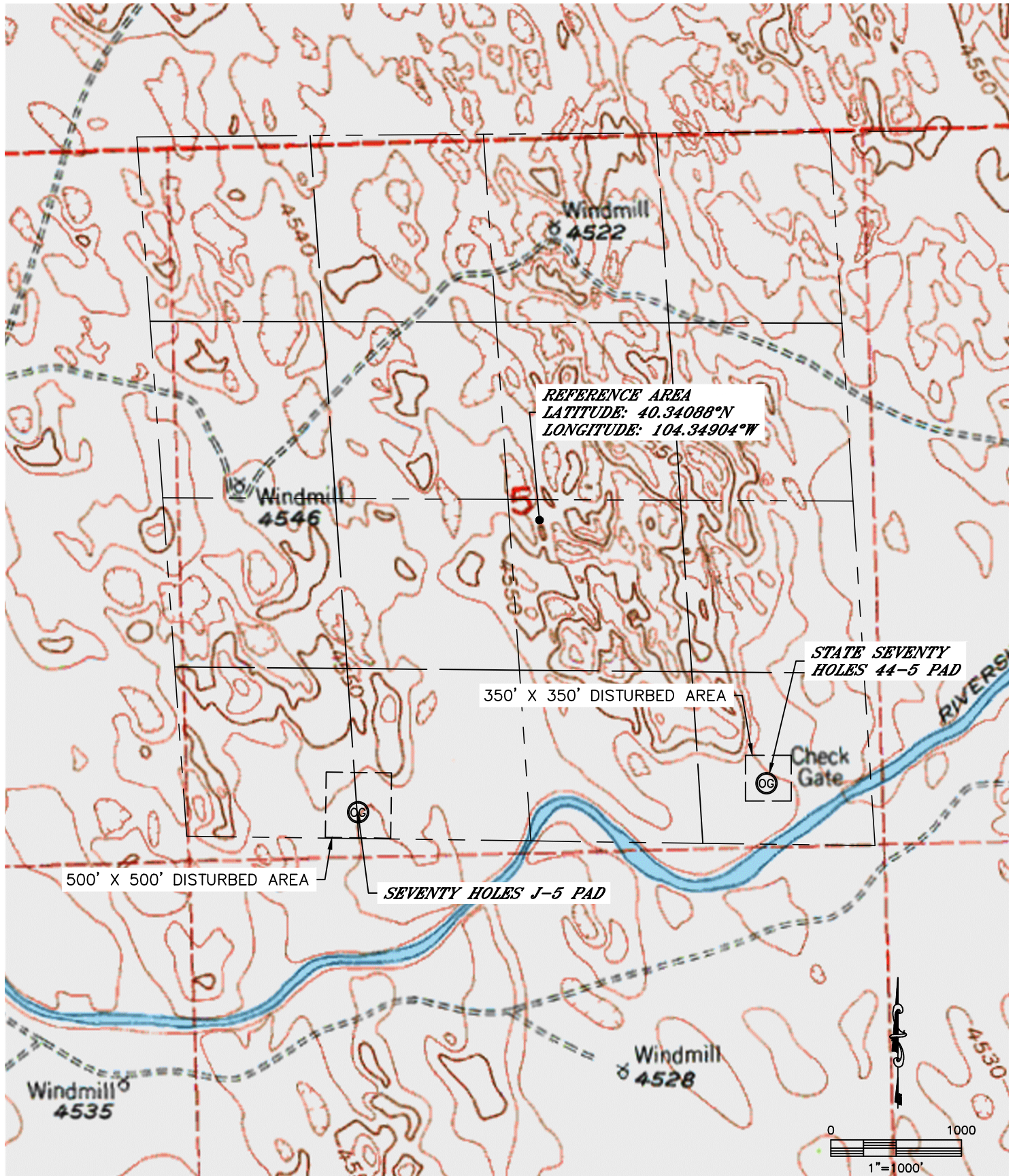


Lat40°, Inc. 1635 Foxtrail Drive, Suite 325 Loveland, CO 970-776-3321

REFERENCE AREA MAP

SEVENTY HOLES J-5 PAD &
STATE SEVENTY HOLES 44-5 PAD

SECTION: 5
TOWNSHIP: 4N
RANGE: 62W



DATE: rev.11/2/2012
PROJECT#: 2012024