

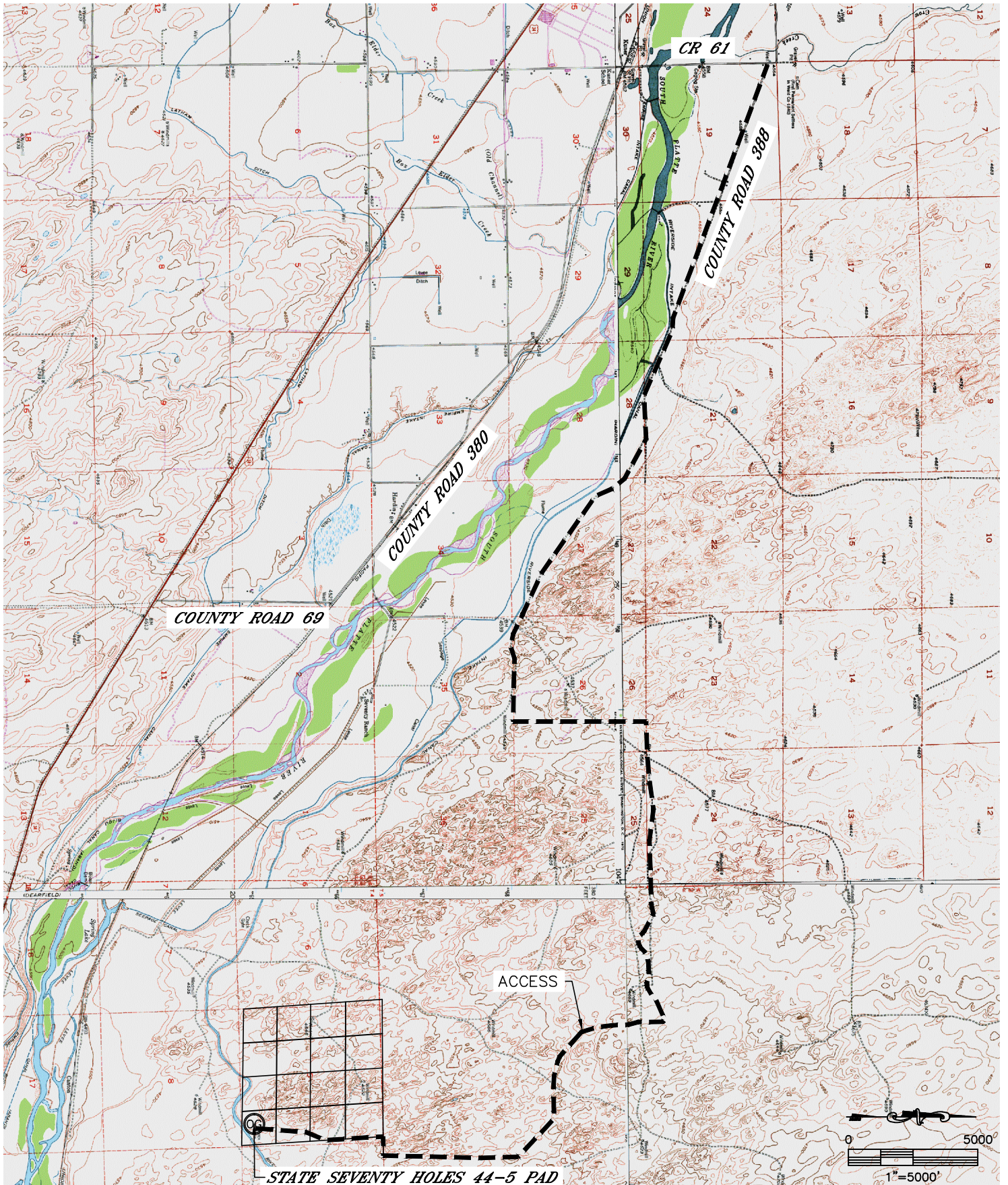


Lat40°, Inc. 1635 Foxtrail Drive, Suite 325 Loveland, CO 970-776-3321

# ACCESS ROAD MAP

STATE SEVENTY HOLES 44-5 PAD

SECTION: 5  
TOWNSHIP: 4N  
RANGE: 62W



STATE SEVENTY HOLES 44-5 PAD

DATE: 11/2/2012  
PROJECT#: 2012024