

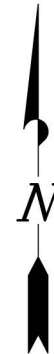
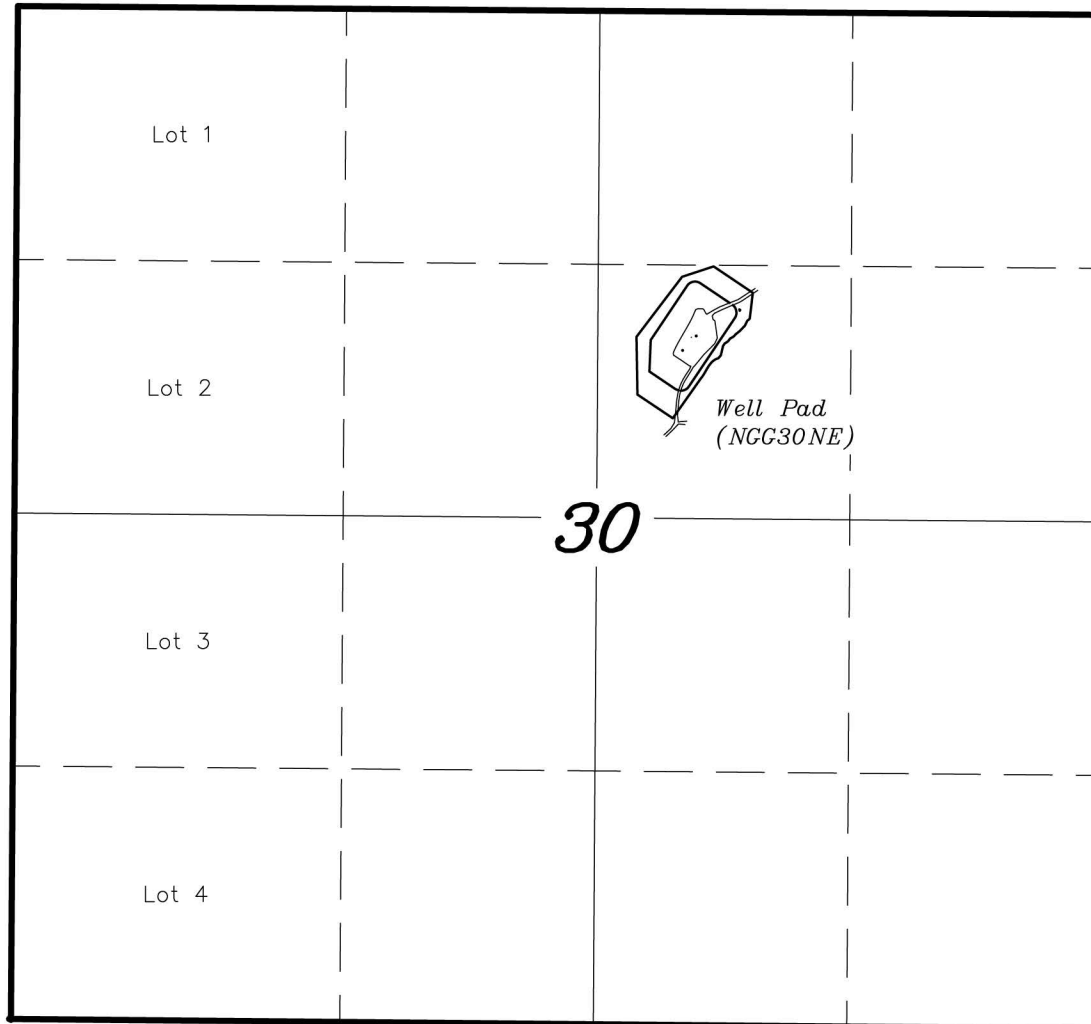
T8S, R91W, 6th P.M.

ENCANA OIL & GAS (USA) INC

*GENERAL MULTI WELL PLAN
SECTION DRILLING MAP*

*WELL PAD (NGG30NE)
EXPANSION*

T8S, R91W, 6th P.M.



TRI STATE LAND SURVEYING & CONSULTING

180 NORTH VERNAL AVE. — VERNAL, UTAH 84078
(435) 781-2501

DATE SURVEYED:
10-06-11

SURVEYED BY: C.D.S.

SHEET

DATE DRAWN:
03-07-13

DRAWN BY: M.W.

1

REVISED:
04-26-13 M.W.

SCALE: 1" = 1000'

OF 8