

2010 UELS Alum.
Cap, 0.4' High,
E-W Fence

WELL LOCATION PLAT T9N, R59W, 6th P.M.

Set Marked Stone

N89°45'05"E - 2602.74' (Meas.)

N89°45'05"E - 2602.74' (Meas.)

2012 Priv. Alum. Cap,
0.5' High, 1.0' South
of E-W Fence,
PLS 28285

N00°13'50"E - 2664.40' (Meas.)

S00°31'05"E - 2658.50' (Meas.)

NOTE:
SEE LOCATION DRAWING FOR
EXISTING IMPROVEMENTS WITHIN 400'
OF THE PROPOSED DISTURBANCE.

Priv. Alum. Cap,
0.3' High,
PLS 28285

35

2012 Priv. Alum. Cap,
0.1' Below Ground,
PLS 28285

N00°13'50"E - 2664.40' (Meas.)

S00°31'05"E - 2658.50' (Meas.)

PROPERTY
LINE

CASTOR LC35-62HN

Elev. Ungraded Ground = 4836'

Target
Bottom
Hole

N84°50'43"E

4475.88'

C.C. 2012 Priv.
Alum. Cap,
0.3' High,
PLS 28285

530.05'

N89°37'29"E - 2637.52' (Meas.)

2

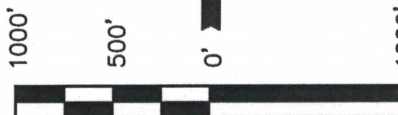
Set Marked
Stone, Private 2003 Priv.
Alum. Cap,
PLS #26602

C.C.
2003 Priv.
Alum. Cap,
0.1' High,
PLS 26602

N89°37'10"E
5277.74' (Meas.)

T9N
T8N

531.24'



SCALE

CERTIFICATE

THIS IS TO CERTIFY THAT THE ABOVE PLAT WAS PREPARED FROM
FIELD NOTES OF ACTUAL SURVEYS MADE BY ME OR UNDER MY
SUPERVISION AND THAT THE SAME ARE TRUE AND CORRECT TO THE
BEST OF MY KNOWLEDGE AND BELIEF.

ROBERT L. BOBERT L.
REGISTERED LAND SURVEYOR
REGISTRATION NO. 17492
STATE OF COLORADO
11-30-12

SE Cor. Sec. 36
Brass Cap,
Flush W/ Ground

REVISED: 11-30-12

UINTAH ENGINEERING & LAND SURVEYING
85 SOUTH 200 EAST - VERNAL, UTAH 84078
(435) 789-1017

LEGEND:

└─┘ = 90° SYMBOL

● = PROPOSED WELL HEAD.

▲ = SECTION CORNERS LOCATED.

FEATURE TABLE

| EXISTING FEATURE | DIRECTION | LENGTH |
|------------------|-----------|--------|
| PROPERTY LINE | WEST | 150' |

PDOP = 1.1

NAD 83 (TARGET BOTTOM HOLE)

LATITUDE = 40°42'05.71" (40.701586)
LONGITUDE = 103°56'15.63" (103.937675)

NAD 83 (SURFACE LOCATION)

LATITUDE = 40°42'01.68" (40.700467)
LONGITUDE = 103°57'13.48" (103.953744)

NOBLE ENERGY, INC.

Well location, CASTOR LC35-62HN, located as
shown in the SW 1/4 SW 1/4 of Section 35, T9N,
R59W, 6th P.M., Weld County, Colorado.

BASIS OF ELEVATION

SPOT ELEVATION LOCATED AT THE NORTHEAST CORNER OF
SECTION 15, T9N, R58W, 6th P.M. TAKEN FROM THE
GATEHOOK SPRING, QUADRANGLE, COLORADO, WELD COUNTY,
7.5 MINUTE QUAD (TOPOGRAPHIC MAP) PUBLISHED BY THE
UNITED STATES DEPARTMENT OF THE INTERIOR, GEOLOGICAL
SURVEY. SAID ELEVATION IS MARKED AS BEING 4679 FEET.

BASIS OF BEARINGS

BASIS OF BEARINGS IS A G.P.S. OBSERVATION.

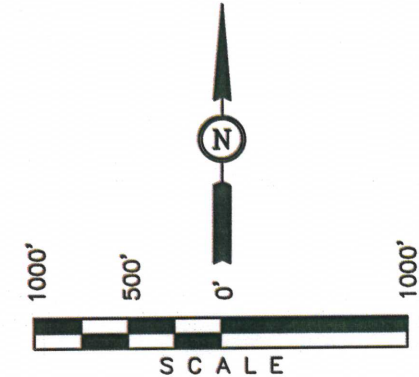
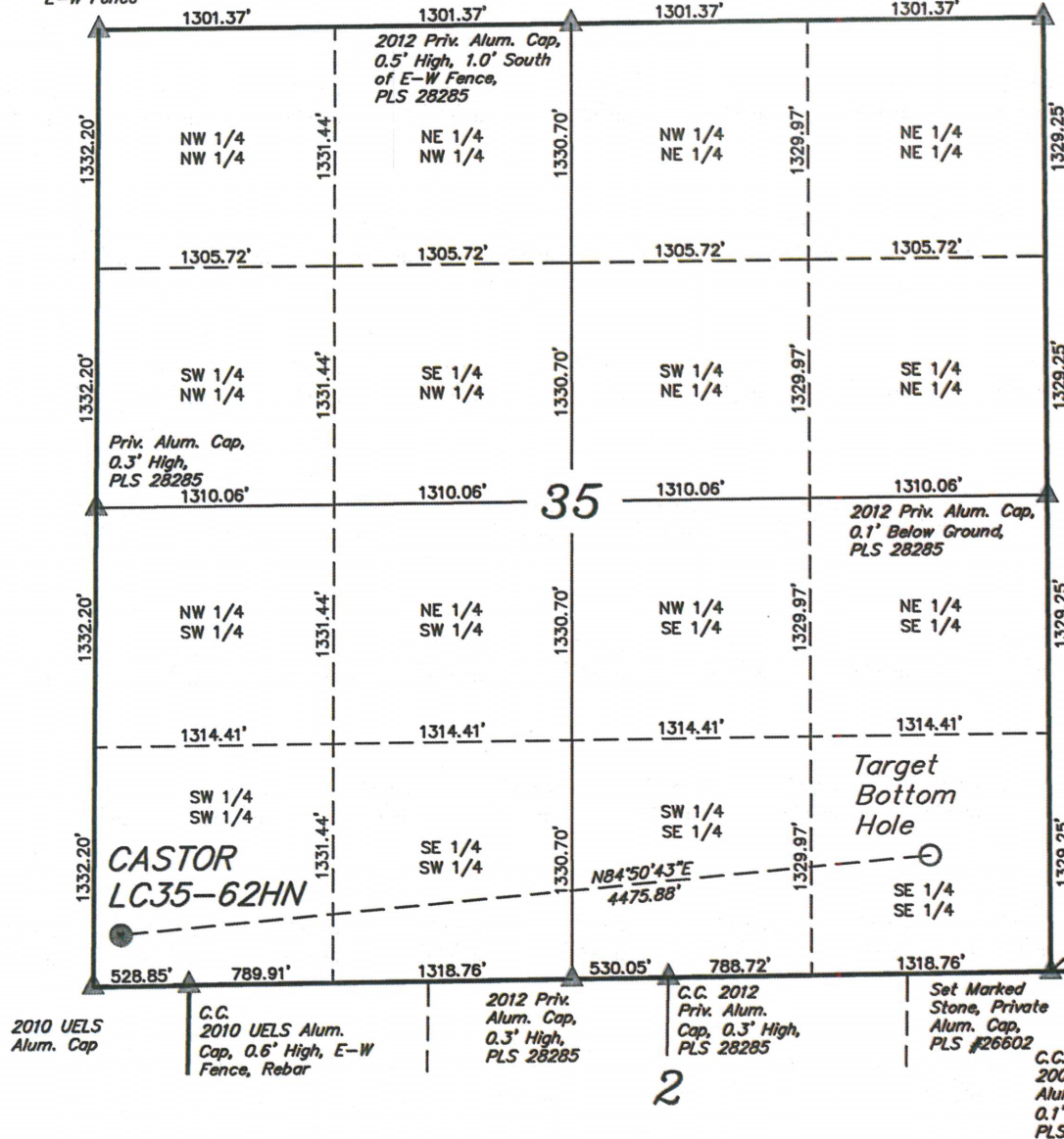
SITE SKETCH T9N, R59W, 6th P.M.

2010 UELS Alum.
Cap, 0.4' High,
E-W Fence

Set Marked Stone

NOBLE ENERGY, INC.

Well location, CASTOR LC35-62HN, located as shown in the SW 1/4 SW 1/4 of Section 35, T9N, R59W, 6th P.M., Weld County, Colorado.



LEGEND:

- = PROPOSED WELL HEAD.
- = TARGET BOTTOM HOLE
- ▲ = SECTION CORNERS LOCATED.

NO WELLS WITHIN SECTION

| | | | | |
|---|--|----------------------------|--|-------------------------|
| N89°37'10"E 277.74' (Meas.) | | | SE Cor. Sec. 36 Brass Cap, Flush W/ Ground | REVISED: 10-18-12 |
| T9N T8N | | | | |
| UINTAH ENGINEERING & LAND SURVEYING 85 SOUTH 200 EAST - VERNAL, UTAH 84078 (435) 789-1017 | | | | |
| SCALE 1" = 1000' | | DATE SURVEYED: 09-11-12 | | DATE DRAWN: 10-03-12 |
| PARTY DAVE SWANSON C.M. B.D.H. | | REFERENCES G.L.O. PLAT | | |
| WEATHER HOT | | FILE NOBLE ENERGY, INC. | | |