

# KERR-MCGEE OIL & GAS ONSHORE LP

Location: COLORADO Slot: SLOT#02 DOVE 8N-13HZ (365' FNL & 558' FEL, SEC.12)  
Field: WELD COUNTY (KERR MCGEE) Well: DOVE 8N-13HZ  
Facility: SEC.12-T2N-R66W Wellbore: DOVE 8N-13HZ PWB

Plot reference wellpath is DOVE 8N-13HZ (REV-C.0) PWB

True vertical depths are referenced to XTRME 20 (RKB)	Grid System: NAD83 / Lambert Colorado SP, Northern Zone (501), US feet
Measured depths are referenced to XTRME 20 (RKB)	North Reference: True north
XTRME 20 (RKB) to Mean Sea Level: 4983 feet	Scale: True distance
Mean Sea Level to Mud line (At Slot: SLOT#02 DOVE 8N-13HZ (365' FNL & 558' FEL, SEC.12): 0 feet	Depths are in feet
Coordinates are in feet referenced to Slot	Created by: precin on 5/9/2013

## Location Information

Facility Name	Grid East (US ft)	Grid North (US ft)	Latitude	Longitude
SEC.12-T2N-R66W	3216528.180	1299513.290	40°09'10.665"N	104°43'31.302"W
Slot	Local N (ft)	Local E (ft)	Grid East (US ft)	Grid North (US ft)
SLOT#02 DOVE 8N-13HZ (365' FNL & 558' FEL, SEC.12)	2260.78	2100.47	3218608.731	1301792.237
XTRME 20 (RKB) to Mud line (At Slot: SLOT#02 DOVE 8N-13HZ (365' FNL & 558' FEL, SEC.12)				4983R
Mean Sea Level to Mud line (At Slot: SLOT#02 DOVE 8N-13HZ (365' FNL & 558' FEL, SEC.12)				0R
XTRME 20 (RKB) to Mean Sea Level				4983R

## Survey Program

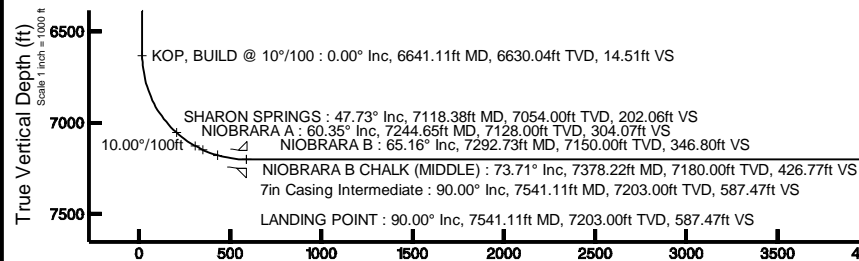
Start MD (ft)	End MD (ft)	Tool	Model	Log Name/Comment	Wellbore
16.00	958.00	Generic gyro - continuous	Generic gyro - continuous (Standard)		DOVE 8N-13HZ AWB
958.00	7541.11	NavTrak	NavTrak (MAGCORR, IFR)		DOVE 8N-13HZ PWB
7541.11	14023.72	OnTrak	OnTrak (MAGCORR, IFR)		DOVE 8N-13HZ PWB

## Well Profile Data

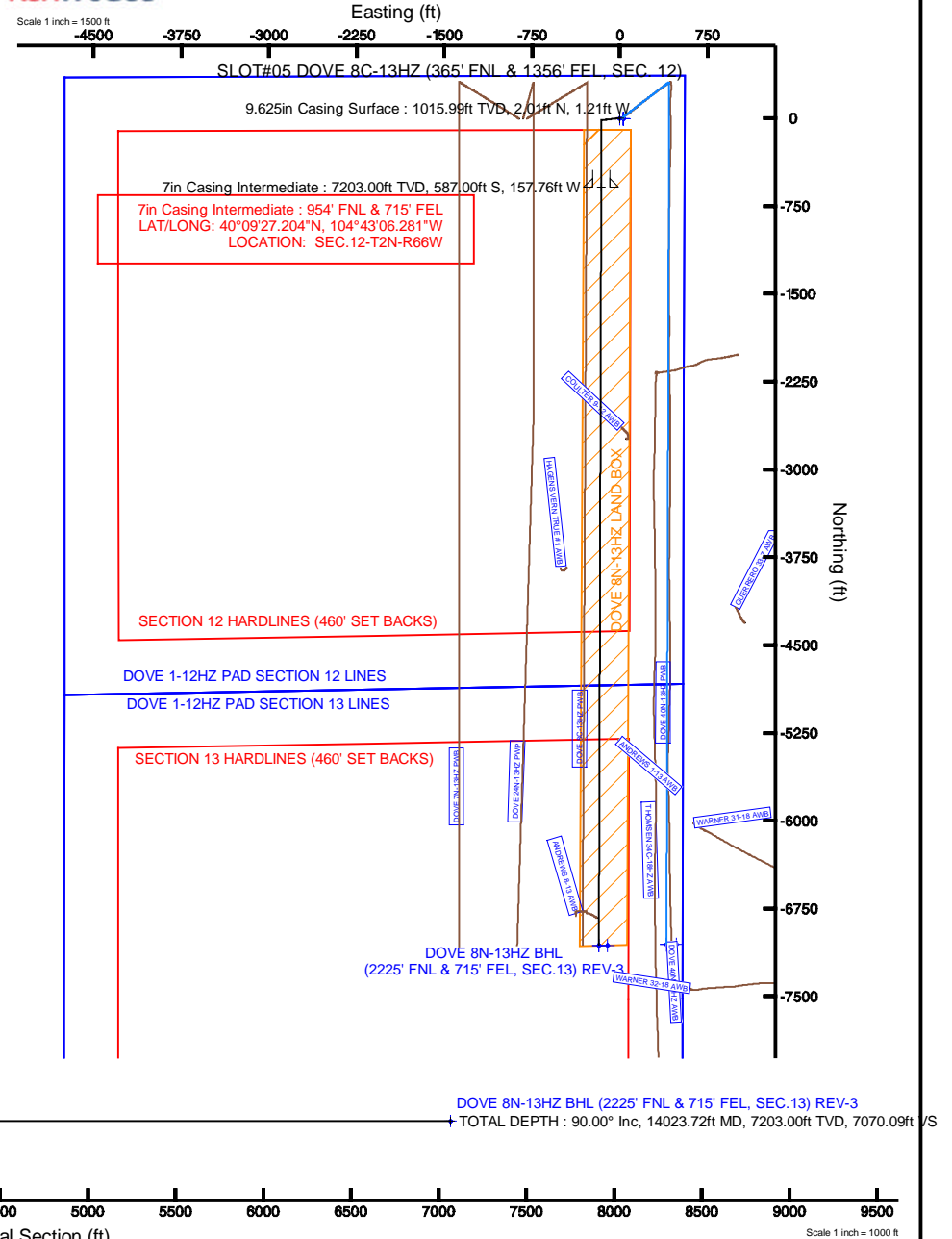
Design Comment	MD (ft)	Inc (°)	Az (°)	TVD (ft)	Local N (ft)	Local E (ft)	DLS (°/100ft)	VS (ft)
TIE-ON	958.00	0.490	340.140	957.99	1.54	-1.04	0.00	-1.54
BEGIN NUDGE	1120.01	0.490	340.140	1120.00	2.85	-1.51	0.00	-2.84
END NUDGE	1615.13	10.000	263.000	1612.57	-0.41	-45.01	2.00	0.55
BEGIN DROP	2008.53	10.000	263.000	2000.00	-8.73	-112.81	0.00	9.08
END DROP	2508.53	0.000	180.175	2497.47	-14.04	-156.01	2.00	14.51
KOP, BUILD @ 10°/100	6641.11	0.000	180.175	6630.04	-14.04	-156.01	0.00	14.51
LANDING POINT	7541.11	90.000	180.175	7203.00	-586.99	-157.76	10.00	587.47
TOTAL DEPTH	14023.72	90.000	180.176	7203.00	-7069.58	-177.62	0.00	7070.09

## Targets

Name	MD (ft)	TVD (ft)	Local N (ft)	Local E (ft)	Grid East (US ft)	Grid North (US ft)	Latitude	Longitude
DOVE 1-12HZ PAD SECTION 12 HARDLINES (460' SET BACKS)		4983.00	0.00	29.89	3218638.62	1301792.50	40°09'33.005"N	104°43'03.864"W
DOVE 1-12HZ PAD SECTION 12 LINES		4983.00	0.00	29.89	3218638.62	1301792.50	40°09'33.005"N	104°43'03.864"W
DOVE 1-12HZ PAD SECTION 13 HARDLINES (460' SET BACKS)		4983.00	0.00	29.89	3218638.62	1301792.50	40°09'33.005"N	104°43'03.864"W
DOVE 1-12HZ PAD SECTION 13 LINES		4983.00	0.00	29.89	3218638.62	1301792.50	40°09'33.005"N	104°43'03.864"W
DOVE 8N-13HZ LAND BOX		4983.00	0.00	0.00	3218608.73	1301792.34	40°09'33.005"N	104°43'04.248"W
DOVE 8N-13HZ BHL (2225' FNL & 715' FEL, SEC.13) REV-3	14023.72	7203.00	-7069.58	-177.62	3218493.48	1294721.68	40°08'23.143"N	104°43'06.536"W
DOVE 8N-13HZ BHL (2225' FNL & 715' FEL, SEC.13) REV-2		7219.00	-7069.58	-177.59	3218493.51	1294721.68	40°08'23.143"N	104°43'06.536"W
DOVE 8N-13HZ BHL ON PLAT (2225' FNL & 640' FEL, SEC.13) REV-1		7219.00	-7069.58	-192.59	3218568.50	1294722.34	40°08'23.143"N	104°43'05.570"W



Vertical Section (ft)  
Azimuth 180.17° with reference 0.00 N, 0.00 E





# Planned Wellpath Report

DOVE 8N-13HZ (REV-C.0) PWP

Page 1 of 7



## REFERENCE WELLPATH IDENTIFICATION

Operator	KERR-MCGEE OIL & GAS ONSHORE LP	Slot	SLOT#02 DOVE 8N-13HZ (365'FNL & 558' FEL, SEC.12)
Area	COLORADO	Well	DOVE 8N-13HZ
Field	WELD COUNTY (KERR MCGEE)	Wellbore	DOVE 8N-13HZ PWB
Facility	SEC.12-T2N-R66W		

## REPORT SETUP INFORMATION

Projection System	NAD83 / Lambert Colorado SP, Northern Zone (501), US feet	Software System	WellArchitect® 3.0.2
North Reference	True	User	Precain
Scale	0.999958	Report Generated	5/9/2013 at 10:38:40 AM
Convergence at slot	0.51° East	Database/Source file	WellArchitectDB/DOVE_8N-13HZ_PWB.xml

## WELLPATH LOCATION

	Local coordinates		Grid coordinates		Geographic coordinates	
	North[ft]	East[ft]	Easting[US ft]	Northing[US ft]	Latitude	Longitude
Slot Location	2260.78	2100.47	3218608.73	1301792.24	40°09'33.005"N	104°43'04.249"W
Facility Reference Pt			3216528.18	1299513.29	40°09'10.665"N	104°43'31.302"W
Field Reference Pt			3197771.84	1268891.29	40°04'09.600"N	104°47'36.000"W

## WELLPATH DATUM

Calculation method	Minimum curvature	XTRME 20 (RKB) to Facility Vertical Datum	4983.00ft
Horizontal Reference Pt	Slot	XTRME 20 (RKB) to Mean Sea Level	4983.00ft
Vertical Reference Pt	XTRME 20 (RKB)	XTRME 20 (RKB) to Mud Line at Slot (SLOT#02 DOVE 8N-13HZ (365'FNL & 558' FEL, SEC.12))	4983.00ft
MD Reference Pt	XTRME 20 (RKB)	Section Origin	N 0.00, E 0.00 ft
Field Vertical Reference	Mean Sea Level	Section Azimuth	180.17°



# Planned Wellpath Report

DOVE 8N-13HZ (REV-C.0) PWP

Page 2 of 7



## REFERENCE WELLPATH IDENTIFICATION

Operator	KERR-MCGEE OIL & GAS ONSHORE LP	Slot	SLOT#02 DOVE 8N-13HZ (365'FNL & 558' FEL, SEC.12)
Area	COLORADO	Well	DOVE 8N-13HZ
Field	WELD COUNTY (KERR MCGEE)	Wellbore	DOVE 8N-13HZ PWB
Facility	SEC.12-T2N-R66W		

## WELLPATH DATA (156 stations) † = interpolated/extrapolated station

MD [ft]	Inclination [°]	Azimuth [°]	TVD [ft]	Vert Sect [ft]	North [ft]	East [ft]	Latitude	Longitude	DLS [°/100ft]	Comments
0.00†	0.000	2.620	0.00	0.00	0.00	0.00	40°09'33.005"N	104°43'04.249"W	0.00	
16.00	0.000	2.620	16.00	0.00	0.00	0.00	40°09'33.005"N	104°43'04.249"W	0.00	
116.00	0.200	2.620	116.00	-0.17	0.17	0.01	40°09'33.007"N	104°43'04.249"W	0.20	
216.00	0.350	304.080	216.00	-0.52	0.52	-0.24	40°09'33.010"N	104°43'04.252"W	0.30	
316.00	0.250	205.260	316.00	-0.49	0.49	-0.58	40°09'33.010"N	104°43'04.257"W	0.46	
416.00	0.300	12.970	416.00	-0.55	0.55	-0.62	40°09'33.010"N	104°43'04.257"W	0.55	
516.00	0.200	300.420	516.00	-0.89	0.89	-0.71	40°09'33.014"N	104°43'04.258"W	0.31	
616.00	0.240	124.790	616.00	-0.86	0.86	-0.69	40°09'33.014"N	104°43'04.258"W	0.44	
706.00†	0.333	346.285	706.00	-1.01	1.01	-0.59	40°09'33.015"N	104°43'04.257"W	0.60	FOX HILLS
716.00	0.390	343.690	716.00	-1.07	1.07	-0.61	40°09'33.016"N	104°43'04.257"W	0.60	
816.00	0.260	251.770	815.99	-1.32	1.33	-0.92	40°09'33.018"N	104°43'04.261"W	0.48	
916.00	0.160	52.810	915.99	-1.34	1.34	-1.03	40°09'33.018"N	104°43'04.262"W	0.41	
958.00	0.490	340.140	957.99	-1.54	1.54	-1.04	40°09'33.020"N	104°43'04.262"W	0.00	TIE-ON
1058.00†	0.490	340.140	1057.99	-2.34	2.35	-1.33	40°09'33.028"N	104°43'04.266"W	0.00	
1120.01	0.490	340.140	1120.00	-2.84	2.85	-1.51	40°09'33.033"N	104°43'04.268"W	0.00	BEGIN NUDGE
1158.00†	0.974	289.955	1157.99	-3.10	3.11	-1.87	40°09'33.036"N	104°43'04.273"W	2.00	
1258.00†	2.886	269.875	1257.92	-3.38	3.40	-5.19	40°09'33.039"N	104°43'04.316"W	2.00	
1358.00†	4.870	265.934	1357.69	-3.05	3.09	-11.94	40°09'33.036"N	104°43'04.403"W	2.00	
1458.00†	6.863	264.275	1457.16	-2.12	2.19	-22.12	40°09'33.027"N	104°43'04.534"W	2.00	
1558.00†	8.859	263.360	1556.22	-0.60	0.70	-35.71	40°09'33.012"N	104°43'04.709"W	2.00	
1615.13	10.000	263.000	1612.57	0.55	-0.41	-45.01	40°09'33.001"N	104°43'04.829"W	2.00	END NUDGE
1658.00†	10.000	263.000	1654.79	1.48	-1.32	-52.40	40°09'32.992"N	104°43'04.924"W	0.00	
1758.00†	10.000	263.000	1753.27	3.64	-3.43	-69.63	40°09'32.971"N	104°43'05.146"W	0.00	
1858.00†	10.000	263.000	1851.75	5.81	-5.55	-86.87	40°09'32.950"N	104°43'05.368"W	0.00	
1958.00†	10.000	263.000	1950.24	7.98	-7.66	-104.10	40°09'32.929"N	104°43'05.590"W	0.00	
2008.53	10.000	263.000	2000.00	9.08	-8.73	-112.81	40°09'32.919"N	104°43'05.702"W	0.00	BEGIN DROP
2058.00†	9.011	263.000	2048.79	10.10	-9.73	-120.92	40°09'32.909"N	104°43'05.806"W	2.00	
2158.00†	7.011	263.000	2147.81	11.84	-11.43	-134.75	40°09'32.892"N	104°43'05.985"W	2.00	
2258.00†	5.011	263.000	2247.25	13.15	-12.70	-145.14	40°09'32.879"N	104°43'06.118"W	2.00	
2358.00†	3.011	263.000	2347.00	14.02	-13.56	-152.08	40°09'32.871"N	104°43'06.208"W	2.00	
2458.00†	1.011	263.000	2446.94	14.46	-13.98	-155.57	40°09'32.867"N	104°43'06.253"W	2.00	
2508.53	0.000	180.175	2497.47	14.51	-14.04	-156.01	40°09'32.866"N	104°43'06.258"W	2.00	END DROP
2558.00†	0.000	180.175	2546.93	14.51	-14.04	-156.01	40°09'32.866"N	104°43'06.258"W	0.00	
2658.00†	0.000	180.175	2646.93	14.51	-14.04	-156.01	40°09'32.866"N	104°43'06.258"W	0.00	
2758.00†	0.000	180.175	2746.93	14.51	-14.04	-156.01	40°09'32.866"N	104°43'06.258"W	0.00	
2858.00†	0.000	180.175	2846.93	14.51	-14.04	-156.01	40°09'32.866"N	104°43'06.258"W	0.00	
2958.00†	0.000	180.175	2946.93	14.51	-14.04	-156.01	40°09'32.866"N	104°43'06.258"W	0.00	
3058.00†	0.000	180.175	3046.93	14.51	-14.04	-156.01	40°09'32.866"N	104°43'06.258"W	0.00	
3158.00†	0.000	180.175	3146.93	14.51	-14.04	-156.01	40°09'32.866"N	104°43'06.258"W	0.00	
3258.00†	0.000	180.175	3246.93	14.51	-14.04	-156.01	40°09'32.866"N	104°43'06.258"W	0.00	
3337.07†	0.000	180.175	3326.00	14.51	-14.04	-156.01	40°09'32.866"N	104°43'06.258"W	0.00	PARKMAN
3358.00†	0.000	180.175	3346.93	14.51	-14.04	-156.01	40°09'32.866"N	104°43'06.258"W	0.00	
3458.00†	0.000	180.175	3446.93	14.51	-14.04	-156.01	40°09'32.866"N	104°43'06.258"W	0.00	
3558.00†	0.000	180.175	3546.93	14.51	-14.04	-156.01	40°09'32.866"N	104°43'06.258"W	0.00	
3658.00†	0.000	180.175	3646.93	14.51	-14.04	-156.01	40°09'32.866"N	104°43'06.258"W	0.00	



# Planned Wellpath Report

DOVE 8N-13HZ (REV-C.0) PWP

Page 3 of 7



## REFERENCE WELLPATH IDENTIFICATION

Operator	KERR-MCGEE OIL & GAS ONSHORE LP	Slot	SLOT#02 DOVE 8N-13HZ (365'FNL & 558' FEL, SEC.12)
Area	COLORADO	Well	DOVE 8N-13HZ
Field	WELD COUNTY (KERR MCGEE)	Wellbore	DOVE 8N-13HZ PWB
Facility	SEC.12-T2N-R66W		

## WELLPATH DATA (156 stations) † = interpolated/extrapolated station

MD [ft]	Inclination [°]	Azimuth [°]	TVD [ft]	Vert Sect [ft]	North [ft]	East [ft]	Latitude	Longitude	DLS [°/100ft]	Comments
3758.00†	0.000	180.175	3746.93	14.51	-14.04	-156.01	40°09'32.866"N	104°43'06.258"W	0.00	
3858.00†	0.000	180.175	3846.93	14.51	-14.04	-156.01	40°09'32.866"N	104°43'06.258"W	0.00	
3958.00†	0.000	180.175	3946.93	14.51	-14.04	-156.01	40°09'32.866"N	104°43'06.258"W	0.00	
4058.00†	0.000	180.175	4046.93	14.51	-14.04	-156.01	40°09'32.866"N	104°43'06.258"W	0.00	
4158.00†	0.000	180.175	4146.93	14.51	-14.04	-156.01	40°09'32.866"N	104°43'06.258"W	0.00	
4258.00†	0.000	180.175	4246.93	14.51	-14.04	-156.01	40°09'32.866"N	104°43'06.258"W	0.00	
4358.00†	0.000	180.175	4346.93	14.51	-14.04	-156.01	40°09'32.866"N	104°43'06.258"W	0.00	
4375.07†	0.000	180.175	4364.00	14.51	-14.04	-156.01	40°09'32.866"N	104°43'06.258"W	0.00	SUSSEX
4458.00†	0.000	180.175	4446.93	14.51	-14.04	-156.01	40°09'32.866"N	104°43'06.258"W	0.00	
4558.00†	0.000	180.175	4546.93	14.51	-14.04	-156.01	40°09'32.866"N	104°43'06.258"W	0.00	
4658.00†	0.000	180.175	4646.93	14.51	-14.04	-156.01	40°09'32.866"N	104°43'06.258"W	0.00	
4758.00†	0.000	180.175	4746.93	14.51	-14.04	-156.01	40°09'32.866"N	104°43'06.258"W	0.00	
4858.00†	0.000	180.175	4846.93	14.51	-14.04	-156.01	40°09'32.866"N	104°43'06.258"W	0.00	
4958.00†	0.000	180.175	4946.93	14.51	-14.04	-156.01	40°09'32.866"N	104°43'06.258"W	0.00	
5058.00†	0.000	180.175	5046.93	14.51	-14.04	-156.01	40°09'32.866"N	104°43'06.258"W	0.00	
5158.00†	0.000	180.175	5146.93	14.51	-14.04	-156.01	40°09'32.866"N	104°43'06.258"W	0.00	
5258.00†	0.000	180.175	5246.93	14.51	-14.04	-156.01	40°09'32.866"N	104°43'06.258"W	0.00	
5358.00†	0.000	180.175	5346.93	14.51	-14.04	-156.01	40°09'32.866"N	104°43'06.258"W	0.00	
5458.00†	0.000	180.175	5446.93	14.51	-14.04	-156.01	40°09'32.866"N	104°43'06.258"W	0.00	
5558.00†	0.000	180.175	5546.93	14.51	-14.04	-156.01	40°09'32.866"N	104°43'06.258"W	0.00	
5658.00†	0.000	180.175	5646.93	14.51	-14.04	-156.01	40°09'32.866"N	104°43'06.258"W	0.00	
5758.00†	0.000	180.175	5746.93	14.51	-14.04	-156.01	40°09'32.866"N	104°43'06.258"W	0.00	
5858.00†	0.000	180.175	5846.93	14.51	-14.04	-156.01	40°09'32.866"N	104°43'06.258"W	0.00	
5958.00†	0.000	180.175	5946.93	14.51	-14.04	-156.01	40°09'32.866"N	104°43'06.258"W	0.00	
6058.00†	0.000	180.175	6046.93	14.51	-14.04	-156.01	40°09'32.866"N	104°43'06.258"W	0.00	
6158.00†	0.000	180.175	6146.93	14.51	-14.04	-156.01	40°09'32.866"N	104°43'06.258"W	0.00	
6258.00†	0.000	180.175	6246.93	14.51	-14.04	-156.01	40°09'32.866"N	104°43'06.258"W	0.00	
6358.00†	0.000	180.175	6346.93	14.51	-14.04	-156.01	40°09'32.866"N	104°43'06.258"W	0.00	
6458.00†	0.000	180.175	6446.93	14.51	-14.04	-156.01	40°09'32.866"N	104°43'06.258"W	0.00	
6558.00†	0.000	180.175	6546.93	14.51	-14.04	-156.01	40°09'32.866"N	104°43'06.258"W	0.00	
6641.11	0.000	180.175	6630.04	14.51	-14.04	-156.01	40°09'32.866"N	104°43'06.258"W	0.00	KOP, BUILD @ 10°/100
6658.00†	1.689	180.175	6646.93	14.76	-14.29	-156.01	40°09'32.864"N	104°43'06.258"W	10.00	
6758.00†	11.689	180.175	6746.12	26.40	-25.92	-156.05	40°09'32.749"N	104°43'06.259"W	10.00	
6858.00†	21.689	180.175	6841.79	55.08	-54.60	-156.13	40°09'32.465"N	104°43'06.260"W	10.00	
6958.00†	31.689	180.175	6931.02	99.94	-99.46	-156.27	40°09'32.022"N	104°43'06.262"W	10.00	
7058.00†	41.689	180.175	7011.11	159.61	-159.13	-156.45	40°09'31.432"N	104°43'06.264"W	10.00	
7118.38†	47.727	180.175	7054.00	202.06	-201.59	-156.58	40°09'31.013"N	104°43'06.266"W	10.00	SHARON SPRINGS
7158.00†	51.689	180.175	7079.62	232.28	-231.80	-156.67	40°09'30.714"N	104°43'06.267"W	10.00	
7244.65†	60.355	180.175	7128.00	304.07	-303.59	-156.89	40°09'30.005"N	104°43'06.270"W	10.00	NIOBRARA A
7258.00†	61.689	180.175	7134.47	315.75	-315.27	-156.93	40°09'29.890"N	104°43'06.270"W	10.00	
7292.73†	65.162	180.175	7150.00	346.80	-346.32	-157.02	40°09'29.583"N	104°43'06.271"W	10.00	NIOBRARA B
7358.00†	71.689	180.175	7173.99	407.47	-406.99	-157.21	40°09'28.983"N	104°43'06.274"W	10.00	
7378.22†	73.711	180.175	7180.00	426.77	-426.29	-157.27	40°09'28.792"N	104°43'06.275"W	10.00	NIOBRARA B CHALK (MIDDLE)
7458.00†	81.689	180.175	7196.98	504.66	-504.18	-157.51	40°09'28.023"N	104°43'06.278"W	10.00	
7541.11	90.000	180.175	7203.00	587.47	-586.99	-157.76	40°09'27.204"N	104°43'06.281"W	10.00	LANDING POINT



# Planned Wellpath Report

DOVE 8N-13HZ (REV-C.0) PWP

Page 4 of 7



## REFERENCE WELLPATH IDENTIFICATION

Operator	KERR-MCGEE OIL & GAS ONSHORE LP	Slot	SLOT#02 DOVE 8N-13HZ (365'FNL & 558' FEL, SEC.12)
Area	COLORADO	Well	DOVE 8N-13HZ
Field	WELD COUNTY (KERR MCGEE)	Wellbore	DOVE 8N-13HZ PWB
Facility	SEC.12-T2N-R66W		

## WELLPATH DATA (156 stations) † = interpolated/extrapolated station

MD [ft]	Inclination [°]	Azimuth [°]	TVD [ft]	Vert Sect [ft]	North [ft]	East [ft]	Latitude	Longitude	DLS [°/100ft]	Comments
7558.00†	90.000	180.175	7203.00	604.36	-603.89	-157.81	40°09'27.037"N	104°43'06.281"W	0.00	
7658.00†	90.000	180.175	7203.00	704.36	-703.89	-158.12	40°09'26.049"N	104°43'06.285"W	0.00	
7758.00†	90.000	180.175	7203.00	804.36	-803.88	-158.42	40°09'25.061"N	104°43'06.289"W	0.00	
7858.00†	90.000	180.175	7203.00	904.36	-903.88	-158.73	40°09'24.073"N	104°43'06.293"W	0.00	
7958.00†	90.000	180.175	7203.00	1004.36	-1003.88	-159.03	40°09'23.085"N	104°43'06.297"W	0.00	
8058.00†	90.000	180.175	7203.00	1104.36	-1103.88	-159.34	40°09'22.096"N	104°43'06.301"W	0.00	
8158.00†	90.000	180.175	7203.00	1204.36	-1203.88	-159.64	40°09'21.108"N	104°43'06.305"W	0.00	
8258.00†	90.000	180.175	7203.00	1304.36	-1303.88	-159.95	40°09'20.120"N	104°43'06.309"W	0.00	
8358.00†	90.000	180.175	7203.00	1404.36	-1403.88	-160.26	40°09'19.132"N	104°43'06.313"W	0.00	
8458.00†	90.000	180.175	7203.00	1504.36	-1503.88	-160.56	40°09'18.144"N	104°43'06.317"W	0.00	
8558.00†	90.000	180.175	7203.00	1604.36	-1603.88	-160.87	40°09'17.155"N	104°43'06.321"W	0.00	
8658.00†	90.000	180.175	7203.00	1704.36	-1703.88	-161.17	40°09'16.167"N	104°43'06.325"W	0.00	
8758.00†	90.000	180.175	7203.00	1804.36	-1803.88	-161.48	40°09'15.179"N	104°43'06.329"W	0.00	
8858.00†	90.000	180.175	7203.00	1904.36	-1903.88	-161.78	40°09'14.191"N	104°43'06.333"W	0.00	
8958.00†	90.000	180.175	7203.00	2004.36	-2003.88	-162.09	40°09'13.203"N	104°43'06.336"W	0.00	
9058.00†	90.000	180.175	7203.00	2104.36	-2103.88	-162.40	40°09'12.214"N	104°43'06.340"W	0.00	
9158.00†	90.000	180.175	7203.00	2204.36	-2203.88	-162.70	40°09'11.226"N	104°43'06.344"W	0.00	
9258.00†	90.000	180.175	7203.00	2304.36	-2303.88	-163.01	40°09'10.238"N	104°43'06.348"W	0.00	
9358.00†	90.000	180.175	7203.00	2404.36	-2403.88	-163.31	40°09'09.250"N	104°43'06.352"W	0.00	
9458.00†	90.000	180.175	7203.00	2504.36	-2503.88	-163.62	40°09'08.262"N	104°43'06.356"W	0.00	
9558.00†	90.000	180.175	7203.00	2604.36	-2603.88	-163.93	40°09'07.273"N	104°43'06.360"W	0.00	
9658.00†	90.000	180.175	7203.00	2704.36	-2703.88	-164.23	40°09'06.285"N	104°43'06.364"W	0.00	
9758.00†	90.000	180.175	7203.00	2804.36	-2803.88	-164.54	40°09'05.297"N	104°43'06.368"W	0.00	
9858.00†	90.000	180.175	7203.00	2904.36	-2903.87	-164.84	40°09'04.309"N	104°43'06.372"W	0.00	
9958.00†	90.000	180.175	7203.00	3004.36	-3003.87	-165.15	40°09'03.321"N	104°43'06.376"W	0.00	
10058.00†	90.000	180.175	7203.00	3104.36	-3103.87	-165.46	40°09'02.332"N	104°43'06.380"W	0.00	
10158.00†	90.000	180.175	7203.00	3204.36	-3203.87	-165.76	40°09'01.344"N	104°43'06.384"W	0.00	
10258.00†	90.000	180.175	7203.00	3304.36	-3303.87	-166.07	40°09'00.356"N	104°43'06.388"W	0.00	
10358.00†	90.000	180.175	7203.00	3404.36	-3403.87	-166.37	40°08'59.368"N	104°43'06.392"W	0.00	
10458.00†	90.000	180.175	7203.00	3504.36	-3503.87	-166.68	40°08'58.380"N	104°43'06.395"W	0.00	
10558.00†	90.000	180.175	7203.00	3604.36	-3603.87	-166.99	40°08'57.391"N	104°43'06.399"W	0.00	
10658.00†	90.000	180.176	7203.00	3704.36	-3703.87	-167.29	40°08'56.403"N	104°43'06.403"W	0.00	
10758.00†	90.000	180.176	7203.00	3804.36	-3803.87	-167.60	40°08'55.415"N	104°43'06.407"W	0.00	
10858.00†	90.000	180.176	7203.00	3904.36	-3903.87	-167.91	40°08'54.427"N	104°43'06.411"W	0.00	
10958.00†	90.000	180.176	7203.00	4004.36	-4003.87	-168.21	40°08'53.439"N	104°43'06.415"W	0.00	
11058.00†	90.000	180.176	7203.00	4104.36	-4103.87	-168.52	40°08'52.450"N	104°43'06.419"W	0.00	
11158.00†	90.000	180.176	7203.00	4204.36	-4203.87	-168.82	40°08'51.462"N	104°43'06.423"W	0.00	
11258.00†	90.000	180.176	7203.00	4304.36	-4303.87	-169.13	40°08'50.474"N	104°43'06.427"W	0.00	
11358.00†	90.000	180.176	7203.00	4404.36	-4403.87	-169.44	40°08'49.486"N	104°43'06.431"W	0.00	
11458.00†	90.000	180.176	7203.00	4504.36	-4503.87	-169.74	40°08'48.498"N	104°43'06.435"W	0.00	
11558.00†	90.000	180.176	7203.00	4604.36	-4603.87	-170.05	40°08'47.509"N	104°43'06.439"W	0.00	
11658.00†	90.000	180.176	7203.00	4704.36	-4703.87	-170.36	40°08'46.521"N	104°43'06.443"W	0.00	
11758.00†	90.000	180.176	7203.00	4804.36	-4803.87	-170.66	40°08'45.533"N	104°43'06.447"W	0.00	
11858.00†	90.000	180.176	7203.00	4904.36	-4903.87	-170.97	40°08'44.545"N	104°43'06.451"W	0.00	
11958.00†	90.000	180.176	7203.00	5004.36	-5003.87	-171.28	40°08'43.557"N	104°43'06.455"W	0.00	



# Planned Wellpath Report

DOVE 8N-13HZ (REV-C.0) PWP

Page 5 of 7



## REFERENCE WELLPATH IDENTIFICATION

Operator	KERR-MCGEE OIL & GAS ONSHORE LP	Slot	SLOT#02 DOVE 8N-13HZ (365'FNL & 558' FEL, SEC.12)
Area	COLORADO	Well	DOVE 8N-13HZ
Field	WELD COUNTY (KERR MCGEE)	Wellbore	DOVE 8N-13HZ PWB
Facility	SEC.12-T2N-R66W		

## WELLPATH DATA (156 stations) † = interpolated/extrapolated station

MD [ft]	Inclination [°]	Azimuth [°]	TVD [ft]	Vert Sect [ft]	North [ft]	East [ft]	Latitude	Longitude	DLS [°/100ft]	Comments
12058.00†	90.000	180.176	7203.00	5104.36	-5103.86	-171.58	40°08'42.568"N	104°43'06.458"W	0.00	
12158.00†	90.000	180.176	7203.00	5204.36	-5203.86	-171.89	40°08'41.580"N	104°43'06.462"W	0.00	
12258.00†	90.000	180.176	7203.00	5304.36	-5303.86	-172.20	40°08'40.592"N	104°43'06.466"W	0.00	
12358.00†	90.000	180.176	7203.00	5404.36	-5403.86	-172.50	40°08'39.604"N	104°43'06.470"W	0.00	
12458.00†	90.000	180.176	7203.00	5504.36	-5503.86	-172.81	40°08'38.615"N	104°43'06.474"W	0.00	
12558.00†	90.000	180.176	7203.00	5604.36	-5603.86	-173.12	40°08'37.627"N	104°43'06.478"W	0.00	
12658.00†	90.000	180.176	7203.00	5704.36	-5703.86	-173.42	40°08'36.639"N	104°43'06.482"W	0.00	
12758.00†	90.000	180.176	7203.00	5804.36	-5803.86	-173.73	40°08'35.651"N	104°43'06.486"W	0.00	
12858.00†	90.000	180.176	7203.00	5904.36	-5903.86	-174.04	40°08'34.663"N	104°43'06.490"W	0.00	
12958.00†	90.000	180.176	7203.00	6004.36	-6003.86	-174.35	40°08'33.674"N	104°43'06.494"W	0.00	
13058.00†	90.000	180.176	7203.00	6104.36	-6103.86	-174.65	40°08'32.686"N	104°43'06.498"W	0.00	
13158.00†	90.000	180.176	7203.00	6204.36	-6203.86	-174.96	40°08'31.698"N	104°43'06.502"W	0.00	
13258.00†	90.000	180.176	7203.00	6304.36	-6303.86	-175.27	40°08'30.710"N	104°43'06.506"W	0.00	
13358.00†	90.000	180.176	7203.00	6404.36	-6403.86	-175.57	40°08'29.722"N	104°43'06.510"W	0.00	
13458.00†	90.000	180.176	7203.00	6504.36	-6503.86	-175.88	40°08'28.733"N	104°43'06.514"W	0.00	
13558.00†	90.000	180.176	7203.00	6604.36	-6603.86	-176.19	40°08'27.745"N	104°43'06.518"W	0.00	
13658.00†	90.000	180.176	7203.00	6704.36	-6703.86	-176.49	40°08'26.757"N	104°43'06.522"W	0.00	
13758.00†	90.000	180.176	7203.00	6804.36	-6803.86	-176.80	40°08'25.769"N	104°43'06.526"W	0.00	
13858.00†	90.000	180.176	7203.00	6904.36	-6903.86	-177.11	40°08'24.781"N	104°43'06.529"W	0.00	
13958.00†	90.000	180.176	7203.00	7004.36	-7003.86	-177.42	40°08'23.792"N	104°43'06.533"W	0.00	
14023.72	90.000	180.176	7203.00 <sup>†</sup>	7070.09	-7069.58	-177.62	40°08'23.143"N	104°43'06.536"W	0.00	TOTAL DEPTH

## HOLE & CASING SECTIONS - Ref Wellbore: DOVE 8N-13HZ PWB Ref Wellpath: DOVE 8N-13HZ (REV-C.0) PWP

String/Diameter	Start MD [ft]	End MD [ft]	Interval [ft]	Start TVD [ft]	End TVD [ft]	Start N/S [ft]	Start E/W [ft]	End N/S [ft]	End E/W [ft]
13.5in Open Hole	16.00	1016.00	1000.00	16.00	1015.99	0.00	0.00	2.01	-1.21
9.625in Casing Surface	16.00	1016.00	1000.00	16.00	1015.99	0.00	0.00	2.01	-1.21
8.75in Open Hole	1016.00	7541.11	6525.11	1015.99	7203.00	2.01	-1.21	-587.00	-157.76
7in Casing Intermediate	16.00	7541.11	7525.11	16.00	7203.00	0.00	0.00	-587.00	-157.76
6.125in Open Hole	7541.11	14023.72	6482.61	7203.00	7203.00	-587.00	-157.76	-7069.58	-177.62
4.5in Casing Production	16.00	14023.72	14007.72	16.00	7203.00	0.00	0.00	-7069.58	-177.62





# Planned Wellpath Report

DOVE 8N-13HZ (REV-C.0) PWP

Page 6 of 7



## REFERENCE WELLPATH IDENTIFICATION

Operator	KERR-MCGEE OIL & GAS ONSHORE LP	Slot	SLOT#02 DOVE 8N-13HZ (365'FNL & 558' FEL, SEC.12)
Area	COLORADO	Well	DOVE 8N-13HZ
Field	WELD COUNTY (KERR MCGEE)	Wellbore	DOVE 8N-13HZ PWB
Facility	SEC.12-T2N-R66W		

## TARGETS

Name	MD [ft]	TVD [ft]	North [ft]	East [ft]	Grid East [US ft]	Grid North [US ft]	Latitude	Longitude	Shape
DOVE 1-12HZ PAD SECTION 12 HARDLINES (460' SET BACKS)		4983.00	0.00	29.89	3218638.62	1301792.50	40°09'33.005"N	104°43'03.864"W	polygon
DOVE 1-12HZ PAD SECTION 12 LINES		4983.00	0.00	29.89	3218638.62	1301792.50	40°09'33.005"N	104°43'03.864"W	polygon
DOVE 1-12HZ PAD SECTION 13 HARDLINES (460' SET BACKS)		4983.00	0.00	29.89	3218638.62	1301792.50	40°09'33.005"N	104°43'03.864"W	polygon
DOVE 1-12HZ PAD SECTION 13 LINES		4983.00	0.00	29.89	3218638.62	1301792.50	40°09'33.005"N	104°43'03.864"W	polygon
DOVE 8N-13HZ LAND BOX		4983.00	0.00	0.00	3218608.73	1301792.24	40°09'33.005"N	104°43'04.249"W	polygon
1) DOVE 8N-13HZ BHL (2225' FNL & 715' FEL, SEC.13) REV-3	14023.72	7203.00	-7069.58	-177.62	3218493.48	1294721.68	40°08'23.143"N	104°43'06.536"W	point
DOVE 8N-13HZ BHL (2225' FNL & 715' FEL, SEC.13) REV-2		7219.00	-7069.58	-177.59	3218493.51	1294721.68	40°08'23.143"N	104°43'06.536"W	point
DOVE 8N-13HZ BHL ON PLAT (2225' FNL & 640' FEL, SEC.13) REV-1		7219.00	-7069.58	-102.59	3218568.50	1294722.34	40°08'23.143"N	104°43'05.570"W	point

## SURVEY PROGRAM - Ref Wellbore: DOVE 8N-13HZ PWB Ref Wellpath: DOVE 8N-13HZ (REV-C.0) PWP

Start MD [ft]	End MD [ft]	Positional Uncertainty Model	Log Name/Comment	Wellbore
16.00	958.00	Generic gyro - continuous (Standard)		DOVE 8N-13HZ AWB
958.00	7541.11	NaviTrak (MAGCORR,IFR)		DOVE 8N-13HZ PWB
7541.11	14023.72	OnTrak (MAGCORR,IFR)		DOVE 8N-13HZ PWB



# Planned Wellpath Report

DOVE 8N-13HZ (REV-C.0) PWP

Page 7 of 7



## REFERENCE WELLPATH IDENTIFICATION

Operator	KERR-MCGEE OIL & GAS ONSHORE LP	Slot	SLOT#02 DOVE 8N-13HZ (365'FNL & 558' FEL, SEC.12)
Area	COLORADO	Well	DOVE 8N-13HZ
Field	WELD COUNTY (KERR MCGEE)	Wellbore	DOVE 8N-13HZ PWB
Facility	SEC.12-T2N-R66W		

## WELLPATH COMMENTS

MD [ft]	Inclination [°]	Azimuth [°]	TVD [ft]	Comment
706.00	0.333	346.285	706.00	FOX HILLS
3337.07	0.000	180.175	3326.00	PARKMAN
4375.07	0.000	180.175	4364.00	SUSSEX
7118.38	47.727	180.175	7054.00	SHARON SPRINGS
7244.65	60.355	180.175	7128.00	NIOBRARA A
7292.73	65.162	180.175	7150.00	NIOBRARA B
7378.22	73.711	180.175	7180.00	NIOBRARA B CHALK (MIDDLE)