

## OPERATOR

GREAT WESTERN OIL & GAS COMPANY, LLC  
1700 BROADWAY SUITE 650  
DENVER, CO 80290  
(303) 830-9893

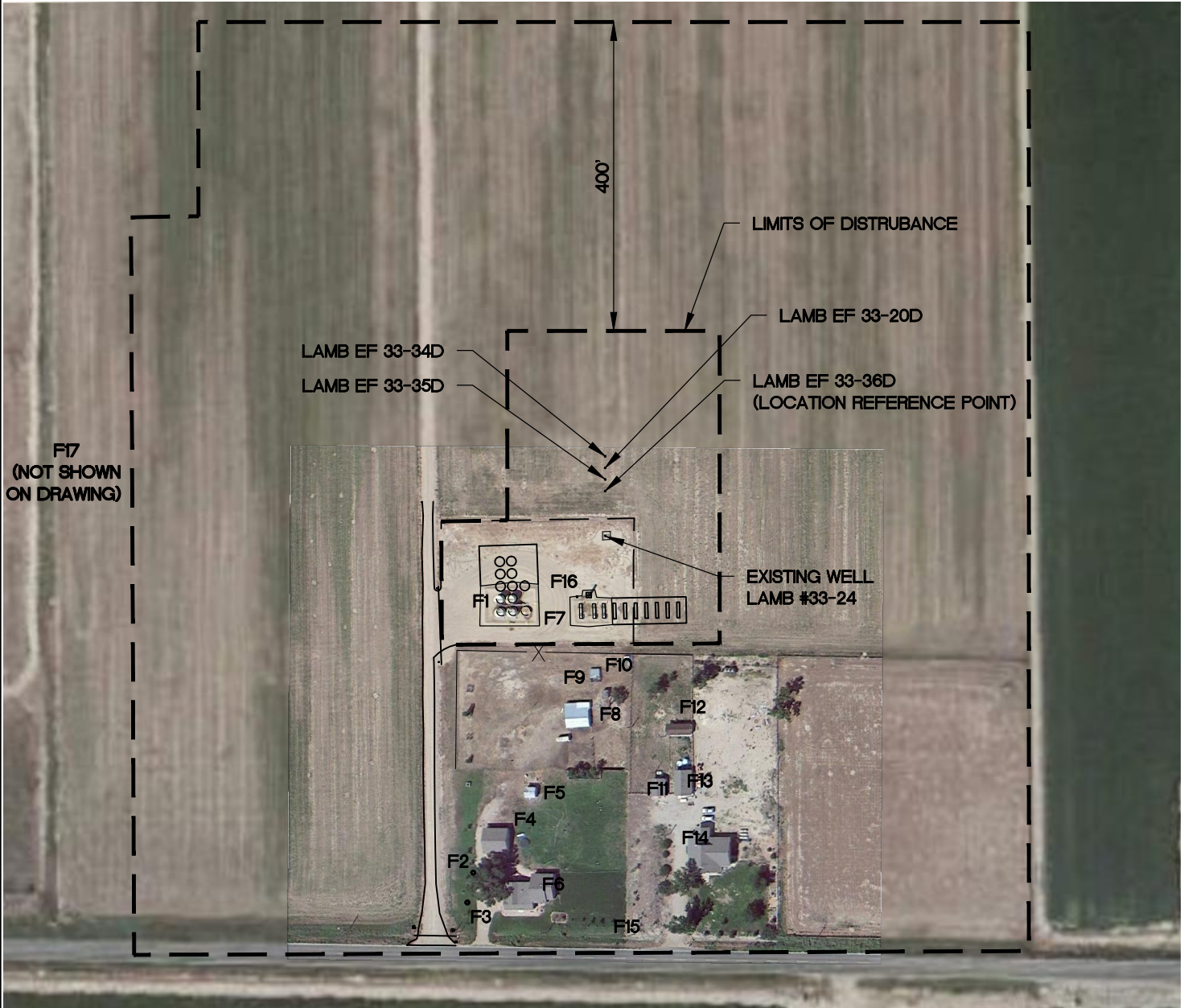
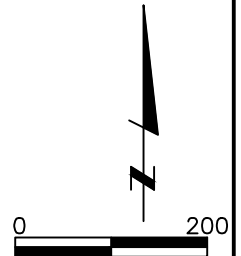
## VISIBLE IMPROVEMENTS

ALL DISTANCES AND BEARINGS REPORTED ARE MEASURED FROM THE LOCATION REFERENCE POINT.

NEARBY FEATURES			
FEATURE	DESCRIPTION	DISTANCE	DIRECTION
F1	EXISTING OIL TANK BATTERY	180	S39°W
F2	WATER WELL	523	S19°W
F3	WATER WELL	562	S19°W
F4	GARAGE	455	S16°W
F5	SHED	394	S13°W
F6	HOUSE	500	S08°W

NEARBY FEATURES			
FEATURE	DESCRIPTION	DISTANCE	DIRECTION
F7	EXISTING SEPARATORS	147	S06°W
F8	OUT BUILDING	275	S04°W
F9	OUT BUILDING / COOP	230	S03°W
F10	FENCE	210	S01°W
F11	OUT BUILDING	378	S10°E
F12	OUT BUILDING	312	S15°E

NEARBY FEATURES			
FEATURE	DESCRIPTION	DISTANCE	DIRECTION
F13	OUT BUILDING	374	S15°E
F14	HOUSE	451	S15°E
F15	OVER HEAD POWER LINE	580	S00°E
F16	FLARE	136	S09°W
F17	NEAREST RAIL ROAD LINE	10195	N90°W
F19	COUNTY ROAD 74	593	S01°W



**LAMP RYNEARSON**  
& ASSOCIATES

4715 Innovation Drive 970.226.0342 | P  
Fort Collins, CO 80525 970.226.0879 | F  
www.LRA-Inc.com

LAMB EF\_LAMB PROSPECT  
33-36D  
LOCATION DRAWING

drawn by

SSZ

date

03/01/2013

cogcc id

project - task number

0213013.01

book and page

0213013 2-15

surface - location

SE/4 SW/4 SEC 33 T7N R65W

path/filename P:\\_Engineering\0213013.01\DRAWINGS\EXHIBITS\Location Drawing.dwg