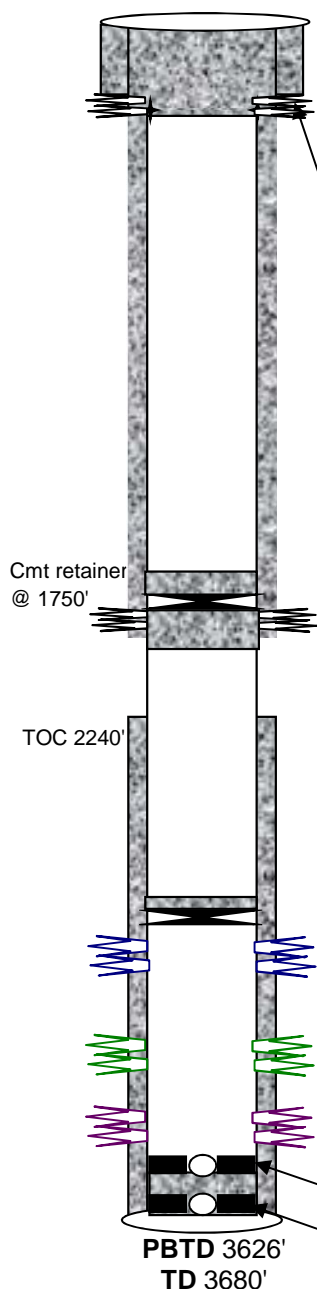




# Black Hills Plateau Production, LLC

A Black Hills Corporation Enterprise

General Well Info			
Well Name:	Pallaoro 14-2	Field:	Plateau
Diagram Date:	3/27/2007	County:	Mesa
Srf Location:	SESW 14 10S 96W	State:	Colorado
BLM #:	n/a	API #:	05-077-08201
GL Elev:	5584'	KB Elev:	5598'
Formation Tops			
Zone	Depth	Zone	Depth
Rollins	3040'		
Cozzette	3375'		
Corcoran	3500'		



**Srf Csg** 9-5/8" 40# K55 ST&C @ 222'

**Srf Cmt** 135sx Neat w/ 2%CaCl

**Prod Csg** 5-1/2" 14# K55 LT&C 8rd @ 3680'

**Prod Cmt** 256ft<sup>3</sup> Dowell 10-0 RFC TOC @ 2240'

**RLNS (11/17/79)** 3044, 3047, 3052, 3056, 3059, 3062, 3065, 3068, 3074, 3078, 3095, 3101' (1jspf, 12 holes)

**Frac** 33,000gal WF-30, 12,000# 100 mesh, 55,000# 20/40

**COZZ (11/15/79)** 3380, 3388, 3392, 3394, 3396, 3398, 3400, 3426, 3428' (1jspf, 9 holes)

**Acid Trtmt (11/16/79)** 500gal BDA ahead of frac (twice)

**Frac (11/17/79)** 23,000gal WF-30, 9,000# 100 mesh, 31,000# 20/40

**CRCN (11/14/79)** 3515, 3518, 3524, 3527, 3531, 3536, 3538, 3582, 3587, 3589' (1jspf, 10 holes)

**Acid Trtmt (11/15/79)** 500gal BDA ahead of frac

**Frac (11/15/79)** 40,000gal WF-30, 15,000# 100mesh, 65,000# 20/40

## PROPOSED P&A ( 2013-04-29)

Set 5 1/2" CIBP @ +/-3000' (below TOC at 2240' and above top Rollins perf at 3044'.) Dump bail 2 sx cmt on top of plug.

Perf 4 circ holes @ 1800' (50' above top of water aquifer)

Set cement retainer @ 1750'. pump 40 sx Class III cmt below retainer. Dump 10 sx cmt on top of retainer.

Perf 4 circ holes @ 277'. Pump 75 sx Class III cmt. Circulate down 5-1/2" and up 9-5/8" surface pipe. Circulate cmt to surface. WOC. Top off as needed.

Dig out wellhead. Cut off 9-5/8" and 5-1/2" csg 4' below ground level. Install dry hole marker plate as per COGCC.