

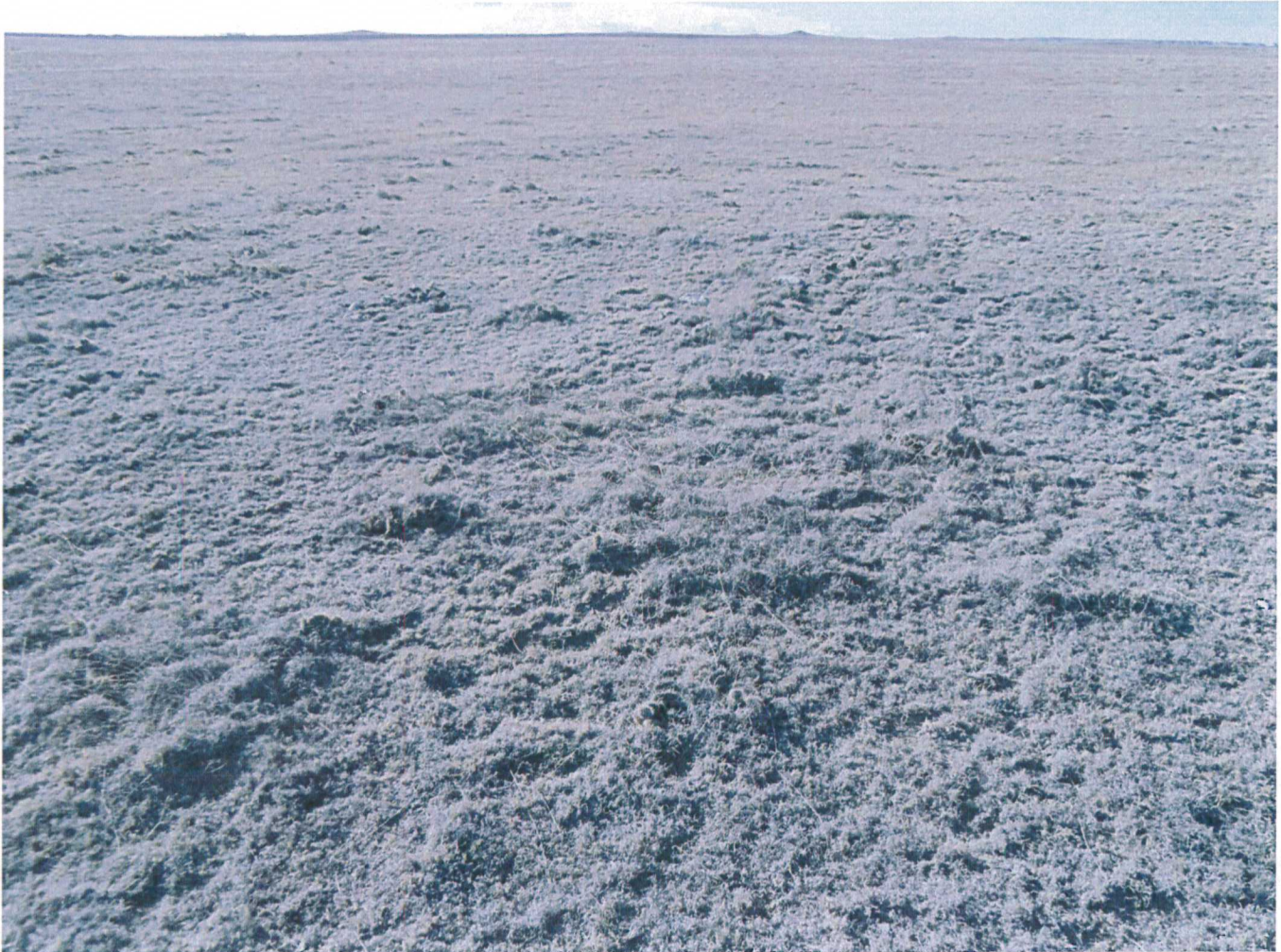
Lat40°, Inc. 1635 Foxtrail Drive, Suite 325 Loveland, CO 970-776-3321

LOCATION PICTURES

ROHN STATE LD10-69-1HN PAD,
ROHN STATE LD09-69-1HN PAD

SECTION: 9
TOWNSHIP: 9N
RANGE: 58W

DATE: 11/29/2012



REFERENCE VIEW WEST