

**CONOCO/PHILLIPS COMPANY EBUSINESS  
DO NOT MAIL- 600 N DAIRY ASHFORD  
HOUSTON, Texas**

Tebo 32 #2

Precision/522

## **Post Job Summary** **Cement Production Casing**

Date Prepared: 1/20/2012  
Version: 1

Service Supervisor: ROSALES, MATTHEW

Submitted by: KENNEDY, HERRON

**HALLIBURTON**

# HALLIBURTON

## Wellbore Geometry

---

Job Tubulars					MD		Excess	Shoe Joint Length
Type	Description	Size in	ID in	Wt lbm/ft	Top ft	Bottom ft	%	ft
Casing	9-5/8" Surface Casing	9.63	8.921	36.00	0.00	2,188.00		
Open Hole Section	8-3/4" Open Hole Section		8.750		2,188.00	8,656.00	25.00	
Casing	7" Casing	7.00	6.184	29.00	0.00	8,629.00		

# HALLIBURTON

## ***Pumping Schedule***

---

Stage /Plug #	Fluid #	Fluid Type	Fluid Name	Surface Density lbm/gal	Surface Volume	Downhole Volume
1	1	Spacer	Tuned Spacer III	9.70	40.0 bbl	40.0 bbl
1	2	Cement Slurry	EXTENDACEM B1	11.50	395.0 sacks	395.0 sacks
1	3	Cement Slurry	VariCem B2	13.00	140.0 sacks	140.0 sacks

# HALLIBURTON

## Service Supervisor Reports

### Job Log

Date/Time	Chart #	Activity Code	Pump Rate	Cum Vol	Pump	Pressure (psig)	Comments
01/19/2012 01:00		Arrive At Loc					RIG IS RUNNING CASING IN WELL
01/19/2012 04:00		Other					SAFETY MEETING DISCUSSING SPOTING TRUCKS AND OUR RIG UP WITH ALL HANDS ON LOCATION
01/19/2012 04:14		Other					SPOT TRUCKS ON LOCATION
01/19/2012 04:20		Pre-Rig Up Safety Meeting					SAFETY HUDDLE WITH HALLIBURTON EE'S DISCUSSING TEAMWORK AND SAFETY DURING RIG UP
01/19/2012 04:30		Rig-Up Equipment					
01/19/2012 05:15		Pre-Job Safety Meeting					DISCUSS STABBING PLUG CONTAINER, PUMP SCHEDULE, OFF LIMIT AREAS, LOCATION OF EMERGENCY LOCATIONS
01/19/2012 05:30		Start Job					NOTE: WHEN LOADING PLUG I NOTICED THAT THE MUD SMELLED ALOT LIKE DIESEL FUEL. I ASKED A RIG HAND ABOUT IT HE RESPONDED THAT THEY HAD CUT THE MUD WITH DIESEL FUEL.
01/19/2012 05:32		Test Lines	0.5	0.5		2500.0	
01/19/2012 05:34		Pump Spacer 1	5	40		250.0	9.7#/GAL TUNED SPACER
01/19/2012 05:42		Pump Lead Cement	5	157		300.0	395SKS, 880.85CUFT, 2.23CUFT/SK, 12.59GAL/SK, 11.5#/GAL, MIXED WITH WATER PROVIDED BY CONOCO PHILLIPS
01/19/2012 06:16		Pump Tail Cement	5	48.6		200.0	140SKS, 273CUFT, 1.95CUFT/SK, 9.84GAL/SK 13#/GAL, MIXED WITH WATER PROVIDED BY RIG
01/19/2012 06:29		Shutdown					
01/19/2012 06:31		Clean Lines	3.5	10		75.0	CLEAN LINES UNTIL LINES ARE PUMPING CLEAN WATER
01/19/2012 06:36		Drop Top Plug					PLUG PRELOADED IN PLUG CONTAINER
01/19/2012 06:37		Pump Displacement	5	317		1050.0	WATER DISPLACEMENT
01/19/2012 07:46		Bump Plug				1568.0	HOLD AND MONITOR PRESSURE FOR FIVE MINUTES
01/19/2012 07:52		Check Floats				1663.0	FLOATS HELD, 2BBL RETURNS AFTER RELEASING PRESSURE, PRESSURE WENT UP TO 1663PSI
01/19/2012 07:53		End Job					
01/19/2012 07:55		Pre-Rig Down Safety Meeting					SAFETY HUDDLE WITH HALLIBURTON EE'S DISCUSSING TEAMWORK AND SAFETY DURING RIG DOWN
01/19/2012 09:00		Rig-Down Equipment					
01/19/2012 10:15		Other					SAFETY HUDDLE BEFORE LEAVING LOCATION DISCUSS DRIVING HAZARDS
01/19/2012 10:30		Depart Location for Service Center or Other Site					

## The Road to Excellence Starts with Safety

<b>Sold To #:</b> 352431		<b>Ship To #:</b> 2898975		<b>Quote #:</b>		<b>Sales Order #:</b> 9208568	
<b>Customer:</b> CONOCO/PHILLIPS COMPANY EBUSINESS				<b>Customer Rep:</b>			
<b>Well Name:</b> Tebo			<b>Well #:</b> 32 #2			<b>API/UWI #:</b> 05-005-07177	
<b>Field:</b> WILDCAT		<b>City (SAP):</b> AURORA		<b>County/Parish:</b> Arapahoe		<b>State:</b> Colorado	
<b>Legal Description:</b> Section 32 Township 4S Range 64W							
<b>Lat:</b> N 39.66 deg. OR N 39 deg. 39 min. 35.496 secs.				<b>Long:</b> W 104.579 deg. OR W -105 deg. 25 min. 14.772 secs.			
<b>Contractor:</b> Precision			<b>Rig/Platform Name/Num:</b> 522				
<b>Job Purpose:</b> Cement Production Casing							
<b>Well Type:</b> Development Well			<b>Job Type:</b> Cement Production Casing				
<b>Sales Person:</b> GROFF, THEODORE			<b>Srvc Supervisor:</b> ROSALES, MATTHEW			<b>MBU ID Emp #:</b> 392095	

### Job Personnel

HES Emp Name	Exp Hrs	Emp #	HES Emp Name	Exp Hrs	Emp #	HES Emp Name	Exp Hrs	Emp #
CHAVEZ, JEROME Christophe	9.5	458298	DIRKS, RICHARD E	9.5	485940	Hinkle, Bradley	9.5	512123
JEWELL, WILLIAM Uris	9.5	503358	ROSALES, MATTHEW John	9.5	392095			

### Equipment

HES Unit #	Distance-1 way	HES Unit #	Distance-1 way	HES Unit #	Distance-1 way	HES Unit #	Distance-1 way
10025030	41 mile	10866493C	41 mile	11019275C	41 mile	11362287C	41 mile
11562544C	41 mile						

### Job Hours

Date	On Location Hours	Operating Hours	Date	On Location Hours	Operating Hours	Date	On Location Hours	Operating Hours

<b>TOTAL</b>	Total is the sum of each column separately							
--------------	--------------------------------------------	--	--	--	--	--	--	--

### Job

Formation Name	Formation Depth (MD)	Top	Bottom	Form Type	Job depth MD	Job Depth TVD	Water Depth	Wk Ht Above Floor	Perforation Depth (MD)	From	To
				BHST	8656. ft	8656. ft					

### Job Times

Called Out	Date	Time	Time Zone
18 - Jan - 2012	22:00	MST	
On Location	19 - Jan - 2012	01:00	MST
Job Started	19 - Jan - 2012	05:30	MST
Job Completed	19 - Jan - 2012	07:53	MST
Departed Loc	19 - Jan - 2012	10:30	MST

### Well Data

Description	New / Used	Max pressure psig	Size in	ID in	Weight lbm/ft	Thread	Grade	Top MD ft	Bottom MD ft	Top TVD ft	Bottom TVD ft
8-3/4" Open Hole Section				8.75				2188.	8656.		
7" Casing	Unknown		7.	6.184	29.			.	8629.		
9-5/8" Surface Casing	Unknown		9.625	8.921	36.			.	2188.		

### Tools and Accessories

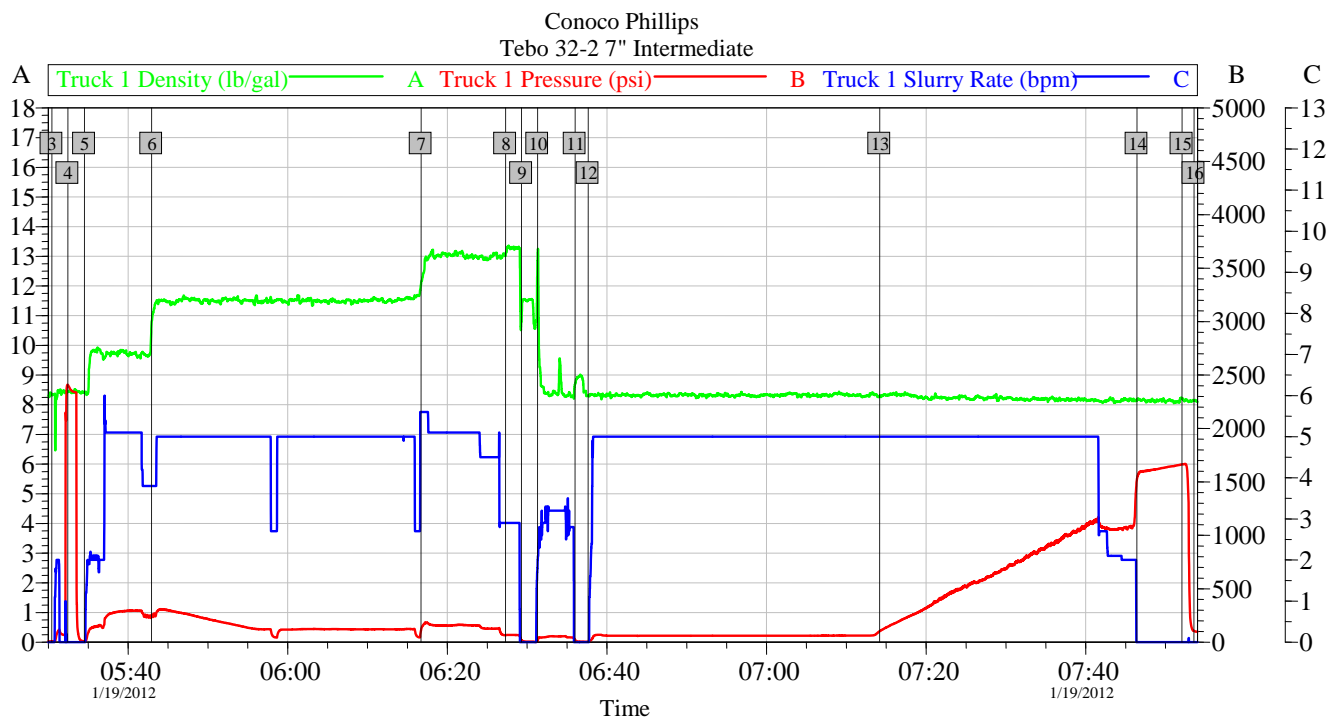
Type	Size	Qty	Make	Depth	Type	Size	Qty	Make	Depth	Type	Size	Qty	Make
Guide Shoe					Packer					Top Plug			
Float Shoe					Bridge Plug					Bottom Plug			

Float Collar					Retainer					SSR plug set			
Insert Float										Plug Container			
Stage Tool										Centralizers			

Miscellaneous Materials													
Gelling Agt		Conc		Surfactant		Conc		Acid Type		Qty		Conc %	
Treatment Fld		Conc		Inhibitor		Conc		Sand Type		Size		Qty	
Fluid Data													
Stage/Plug #: 1													
Fluid #	Stage Type	Fluid Name			Qty	Qty uom	Mixing Density lbm/gal	Yield ft3/sk	Mix Fluid Gal/sk	Rate bbl/min	Total Mix Fluid Gal/sk		
1	Tuned Spacer III	TUNED SPACER III - SBM (483826)			40.00	bbl	9.7						
2	EXTENDACEM B1	EXTENDACEM (TM) SYSTEM (452981)			395.0	sacks	11.5	2.31	13.0		13.0		
13 Gal		FRESH WATER											
3	VariCem B2	VARICEM (TM) CEMENT (452009)			140.0	sacks	13.	1.95	9.86		9.86		
9.86 Gal		FRESH WATER											
Calculated Values				Pressures				Volumes					
Displacement		Shut In: Instant		Lost Returns		Cement Slurry		Pad					
Top Of Cement		5 Min		Cement Returns		Actual Displacement		Treatment					
Frac Gradient		15 Min		Spacers		Load and Breakdown		Total Job					
Rates													
Circulating		Mixing		Displacement		Avg. Job							
Cement Left In Pipe		Amount	0 ft	Reason	Shoe Joint								
Frac Ring # 1 @	ID	Frac ring # 2 @	ID	Frac Ring # 3 @	ID	Frac Ring # 4 @	ID						
The Information Stated Herein Is Correct					Customer Representative Signature								

# HALLIBURTON

## Data Acquisition



Global Event Log					
3	Start Job	05:30:27	4	Test Lines	05:32:26
5	9.7#/gal Tuned Spacer	05:34:32	6	Pump Lead Cement 11.5#/gal	05:42:57
7	Pump Tail Cement 13#/gal	06:16:43	8	Pump Shoe Cement	06:27:18
9	Shutdown	06:29:18	10	Clean Lines	06:31:18
11	Drop Top Plug	06:36:01	12	Pump Displacement	06:37:38
13	Displ Reached Cmmt	07:14:11	14	Bump Plug	07:46:25
15	Release Pressure	07:52:03	16	End Job	07:53:34

Customer	Conoco Phillips	Job	19-Jan-2012	Sales Order #:	9208568
Well Description:	Tebo 32 #2	UWI:	05-005-07177		
Halliburton Service Supervisor	Matthew J. Rosales	Halliburton Operator	Jerome Chavez		

OptiCem v6.4.10  
19-Jan-12 08:08