

CONOCO/PHILLIPS COMPANY EBUSINESS

Tebo 32 #2

Precision/522

## **Post Job Summary**

### **Cement Surface Casing**

Date Prepared: 12/29/2011  
Version: 1

Service Supervisor: SNYDER, JONATHAN

Submitted by: PLIENESS, RYAN

**HALLIBURTON**

# HALLIBURTON

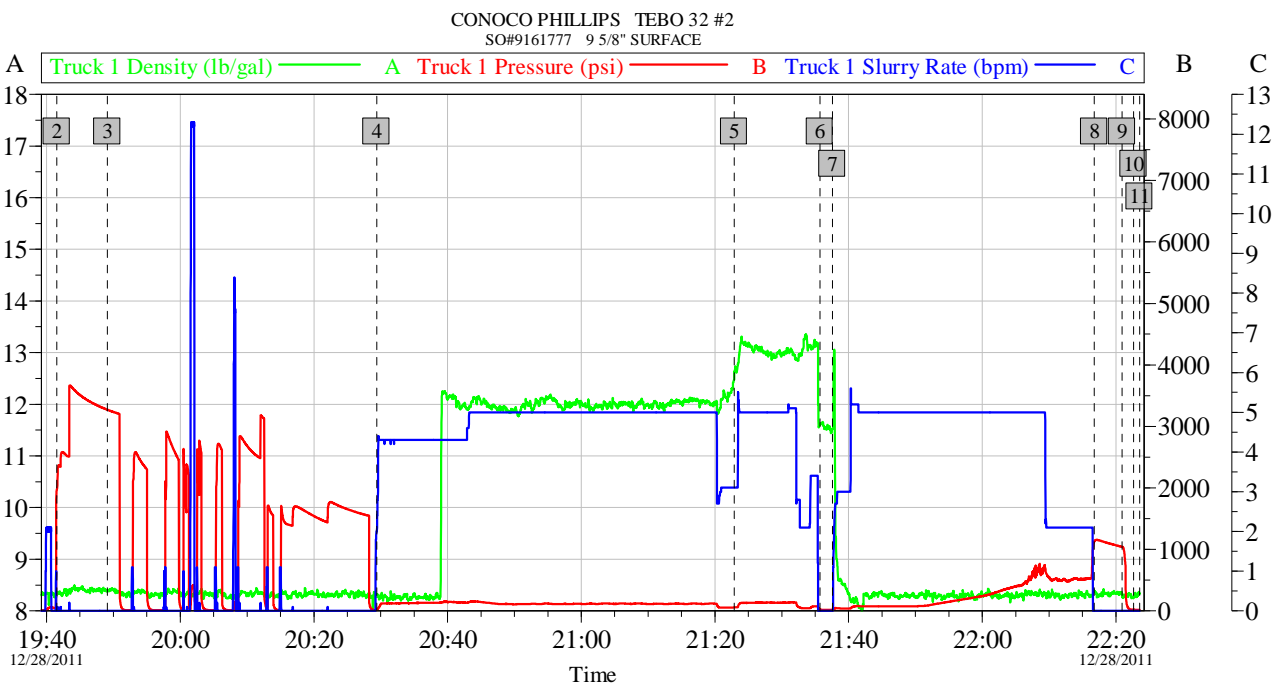
## Wellbore Geometry

Job Tubulars					MD		TVD		Excess	Shoe Joint Length
Type	Description	Size in	ID in	Wt lbm/ft	Top ft	Bottom ft	Top ft	Bottom ft	%	ft
Open Hole Section	Open Hole		12.250		0.00	2,190.00			0.00	
Casing	Surface Casing	9.63	8.921	36.00	0.00	2,180.00			100.00	45.00

## Pumping Schedule

Stage /Plug #	Fluid #	Fluid Type	Fluid Name	Surface Density lbm/gal	Avg Rate bbl/min	Surface Volume	Downhole Volume
1	1	Spacer	Fresh Water Spacer	8.33	4.00	40.0 bbl	40.0 bbl
1	2	Cement Slurry	SwiftCem B2 12#	12.00	4.00	485.0 sacks	485.0 sacks
1	3	Cement Slurry	SwiftCem B2	13.00	4.00	165.0 sacks	165.0 sacks
1	4	Cement Slurry	TOP OUT CEMENT	15.80	1.00	100.0 sacks	100.0 sacks

## Data Acquisition



Global Event Log					
Intersection		T1D	T1P	Intersection	
1 Starting Job	16:27:45	0.010	2.000	2 Start Job	19:41:32
4 Pump Spacer 1	20:29:23	8.291	22.03	5 Pump Tail Cement	21:22:53
7 Pump Displacement	21:37:34	11.52	16.00	8 Bump Plug	22:16:45
10 End Job	22:22:39	8.256	21.00	11 Ending Job	22:23:34
				3 Test Lines	19:49:07
				6 Drop Top Plug	21:35:43
				9 Check Floats	22:20:56

Customer: CONOCO PHILLIPS  
Well Description: TEBO 32 #2  
SERVICE SUPERVISOR JONATHAN SNYDER

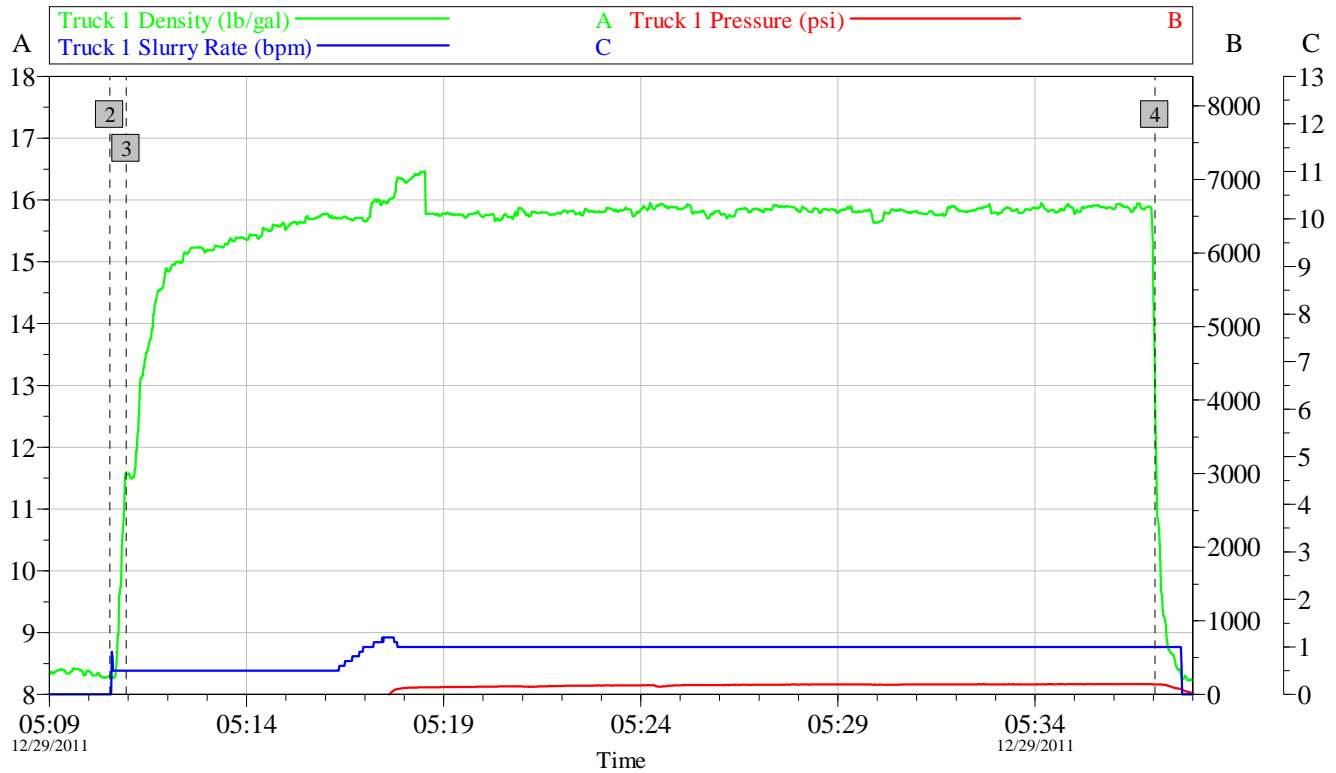
Job Date: 28-Dec-2011  
UWI: 05-005-07177  
SERVICE OPERATOR JAMES WILEY

Sales Order #: 9161777

OptiCem v6.4.9  
28-Dec-11 22:26

# HALLIBURTON

CONOCO PHILLIPS TEBO 32 #2  
SO# 9161777 9 5/8" SURFACE TOP OFF



Global Event Log								
Intersection	T1D	T1P	Intersection	T1D	T1P	Intersection	T1D	T1P
2 Start Job	05:10:32	8.290 -14.00	3 Pump Cement	05:10:57	11.57 -2.000	4 End Job	05:37:02	13.01 137.0

Customer:	CONOCO PHILLIPS	Job Date:	29-Dec-2011	Sales Order #:	9161777
Well Description:	TEBO 32 #2	UWI:	05-005-07177		
SERVICE SUPERVISOR	JONATHAN SNYDER	SERVICE OPERATOR	JAMES WILEY		

OptiCem v6.4.9  
29-Dec-11 05:58

# HALLIBURTON

## Service Supervisor Reports

### Job Log

Date/Time	Chart #	Activity Code	Pump Rate	Cum Vol	Pump		Pressure (psig)	Comments
12/28/2011 10:30		Arrive at Location from Service Center						ARRIVED AND DID A HAZARD HUNT, FOUND NO VISIBLE HAZARDS THAT PREVENT US FROM RIGGING UP OUR EQUIPMENT.
12/28/2011 19:00		Pre-Job Safety Meeting						HELD SAFETY MEETING WITH ALL EMPLOYEES AND ALL THIRD PARTY PERSONEL PRIOR TO PUMPING THE CEMENT JOB.
12/28/2011 19:41		Start Job						
12/28/2011 19:49		Test Lines						PRESSURE TEST LINES TO 2500 PSI
12/28/2011 20:29		Pump Spacer 1	5	40			126.0	RIG WATER MIXED WITH RED DYE
12/28/2011 20:38		Pump Lead Cement	5	213			113.0	485 SKS SWIFTCEN B2 MIXED @ 12 PPG W/ RIG WATER
12/28/2011 21:22		Pump Tail Cement	5	57			87.0	165 SKS SWIFTCEN B2 MIXED @ 13 PPG W/ RIG WATER
12/28/2011 21:34		Shutdown						
12/28/2011 21:35		Drop Top Plug						DROPPED TOP PLUG PRIOR TO DISPLACING
12/28/2011 21:37		Pump Displacement	5	162.7			528.0	RIG WATER
12/28/2011 22:16		Bump Plug	2				1129.0	
12/28/2011 22:20		Check Floats					1041.0	FLOATS HELD, GOOD RETURNS THROUGHOUT THE JOB.
12/28/2011 22:22		End Job						
12/28/2011 23:00		Pressure Up					1500.0	FROM 2300 TILL 0100 WE ATTEMPTED TO DO A CASING TEST, COULDN'T HOLD PRESSURE SO WE STOPPED TO PREVENT MICROANNULUS DOWNHOLE.
12/29/2011 05:10		Start Job						
12/29/2011 06:08		Pump Cement	1	24			137.0	100 SKS PREMIUM G NEAT MIXED W/ 2% CALCIUM CHLORIDE W/ RIG WATER, 24 BBL AWAY GOT CEMENT BACK TO SURFACE, PUMPED THE REST OF THE TUB OUT THEN WASHED UP THE TRUCK
12/29/2011 06:08		End Job						

### The Road to Excellence Starts with Safety

Sold To #:	Ship To #:	Quote #:	Sales Order #: 9161777
Customer: CONOCO/PHILLIPS COMPANY EBUSINESS		Customer Rep:	
Well Name: Tebo		Well #: 32 #2	API/UWI #: 05-005-07177
Field:	City (SAP):	County/Parish: Arapahoe	State: Colorado
Legal Description: Section 32 Township 4S Range 64W			
Lat: N 39.66 deg. OR N 39 deg. 39 min. 35.496 secs.		Long: W 104.579 deg. OR W -105 deg. 25 min. 14.772 secs.	
Contractor: Precision		Rig/Platform Name/Num: 522	
Job Purpose: Cement Surface Casing			
Well Type: Development Well		Job Type: Cement Surface Casing	
Sales Person: FLING, MATTHEW		Srvc Supervisor: SNYDER, JONATHAN	MBU ID Emp #: 435616

### Job Personnel

HES Emp Name	Exp Hrs	Emp #	HES Emp Name	Exp Hrs	Emp #	HES Emp Name	Exp Hrs	Emp #
BARNES, BRIAN L		485204	CHAVEZ, JEROME Christophe		458298	DIRKS, RICHARD E		485940
JEWELL, WILLIAM Uris		503358	LINEBARGER, JOSHUA W		419614	PAUMEN, CORD Anthony		453759
SINCLAIR, RICHARD		368195	SNYDER, JONATHAN Leroy		435616	WILEY, JAMES A		440080

### Equipment

HES Unit #	Distance-1 way	HES Unit #	Distance-1 way	HES Unit #	Distance-1 way	HES Unit #	Distance-1 way
10547939	42 mile	10679720C	42 mile	10857080C	42 mile	10948695	42 mile
10972458	42 mile	10977079C	42 mile	11064046C	42 mile	11362287C	42 mile
11410470C	42 mile	11515108C	42 mile	11562562	42 mile	11562570C	42 mile
11606994	42 mile	11611896C	42 mile				

### Job Hours

Date	On Location Hours	Operating Hours	Date	On Location Hours	Operating Hours	Date	On Location Hours	Operating Hours

**TOTAL** Total is the sum of each column separately

### Job

Formation Name	Formation Depth (MD)	Top	Bottom	Form Type	Job depth MD	Job Depth TVD	Wk Ht Above Floor	Perforation Depth (MD)	From	To
				BHST	2180. ft	2180. ft	4. ft			

### Job Times

Date	Time	Time Zone
28 - Dec - 2011	08:00	MST
28 - Dec - 2011	10:30	MST
28 - Dec - 2011	19:41	MST
29 - Dec - 2011	05:37	MST
29 - Dec - 2011	07:00	MST

### Well Data

Description	New / Used	Max pressure psig	Size in	ID in	Weight lbm/ft	Thread	Grade	Top MD ft	Bottom MD ft	Top TVD ft	Bottom TVD ft
Open Hole				12.25				.	2190.		
Surface Casing	Unknown		9.625	8.921	36.		N-80	.	2180.		

# HALLIBURTON

Sales/Rental/3 <sup>rd</sup> Party (HES)															
Description										Qty	Qty uom	Depth	Supplier		
CMT SURFACE CASING BOM										0	JOB				
SHOE,FLT,9-5/8 8RD,2-3/4 SUPER SEAL										1	EA				
CLR,FLT,9-5/8 8RD 29.3-40PPF,2-3/4										1	EA				
CENTRALIZER-9-5/8"-CSG-12 1/4"-HINGED										25	EA				
COLLAR-STOP-9 5/8"-FRICTION-HINGED										1	EA				
KIT,HALL WELD-A										1	EA				
MILEAGE FOR CEMENTING CREW,ZI										80	MI				
ZI FUEL SURCHG-CARS/PICKUPS<1 1/2TON										80	MI				
Tools and Accessories															
Type	Size	Qty	Make	Depth	Type	Size	Qty	Make	Depth	Type	Size	Qty	Make		
Guide Shoe					Packer					Top Plug					
Float Shoe					Bridge Plug					Bottom Plug					
Float Collar					Retainer					SSR plug set					
Insert Float										Plug Container					
Stage Tool										Centralizers					
Miscellaneous Materials															
Gelling Agt			Conc		Surfactant			Conc		Acid Type			Qty	Conc	%
Treatment Fld			Conc		Inhibitor			Conc		Sand Type			Size	Qty	
Fluid Data															
Stage/Plug #: 1															
Fluid #	Stage Type	Fluid Name			Qty	Qty uom	Mixing Density lbm/gal	Yield ft <sup>3</sup> /sk	Mix Fluid Gal/sk	Rate bbl/min	Total Mix Fluid Gal/sk				
1	Fresh Water Spacer				40.00	bbl	8.33	.0	.0	.0					
2	SwiftCem B2 12#	SWIFTCEM (TM) SYSTEM (452990)			485.0	sacks	12.	2.47	14.56		14.56				
		14.56 Gal FRESH WATER													
3	SwiftCem B2	SWIFTCEM (TM) SYSTEM (452990)			165.0	sacks	13.	1.94	10.61		10.61				
		10.61 Gal FRESH WATER													
4	TOP OUT CEMENT	SQUEEZECM (TM) SYSTEM (452971)			100.0	sacks	15.8	1.15	5.0	1.0	5.0				
		2 % CALCIUM CHLORIDE, PELLET, 50 LB (101509387)													
		5 Gal FRESH WATER													
Calculated Values				Pressures				Volumes							
Displacement				Shut In: Instant				Lost Returns				Cement Slurry			
Top Of Cement				5 Min				Cement Returns				Actual Displacement			
Frac Gradient				15 Min				Spacers				Load and Breakdown			
Rates															
Circulating				Mixing				Displacement				Avg. Job			
Cement Left In Pipe				Amount	45 ft	Reason	Shoe Joint								
Frac Ring # 1 @				ID	Frac ring # 2 @	ID	Frac Ring # 3 @				ID	Frac Ring # 4 @			
The Information Stated Herein Is Correct							Customer Representative Signature								