



Weatherford®

Tooke Rockies, Inc.
(A Weatherford Company)

884 Implement Dr.
Dickinson, ND 58601
701-227-4408

717 West Platte
PO BOX 435
Casper, WY 82601
307-265-2124

Surface Logging Systems

Scale 1:240 (5"=100') Imperial
Measured Depth Log

Well Name: TEBO 32-2
Location: SE/NW Sec. 32 T4S, R64W, Arapahoe County, CO.
License Number: API- 05-005-07177
Spud Date: 12/25/2011
Surface Coordinates: 2728'FSL, 1472'FWL, Sec. 32, T4S. R64W, Arapahoe County, Colorado.
Region: DJ Basin
Drilling Completed: 1/15/2012
Bottom Hole Coordinates:
Ground Elevation (ft): 5926' K.B. Elevation (ft): 5944'
Logged Interval (ft): 6000' To: 8656' Total Depth (ft): 8656'
Formation: Niobrara/Dakota
Type of Drilling Fluid: INVERT.

Printed by MUD.LOG from WellSight Systems 1-800-447-1534 www.WellSight.com

OPERATOR

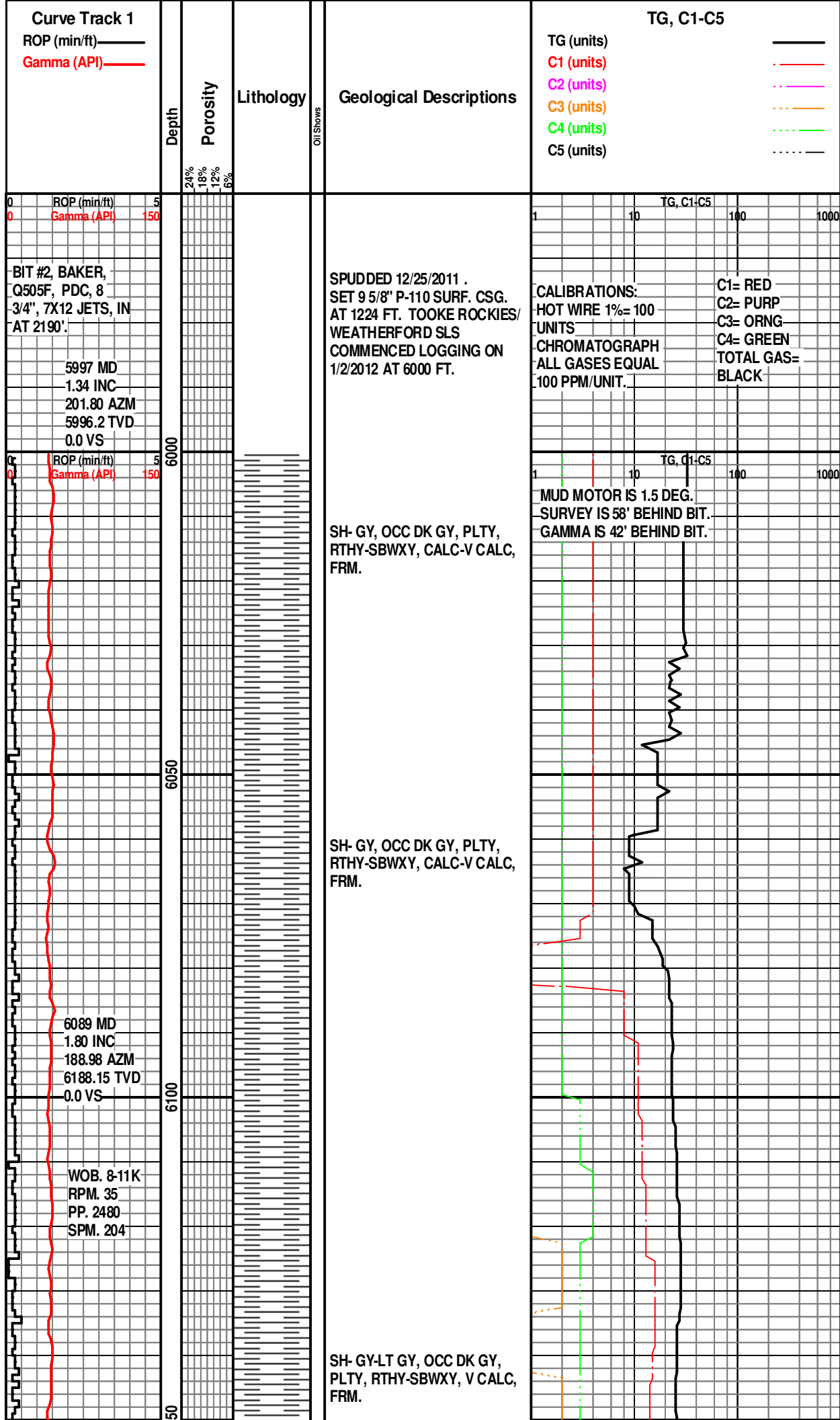
Company: Conoco/Phillips
Address: 600 N. Dairy Ashford
WL 3 3056
Houston, TX 77079

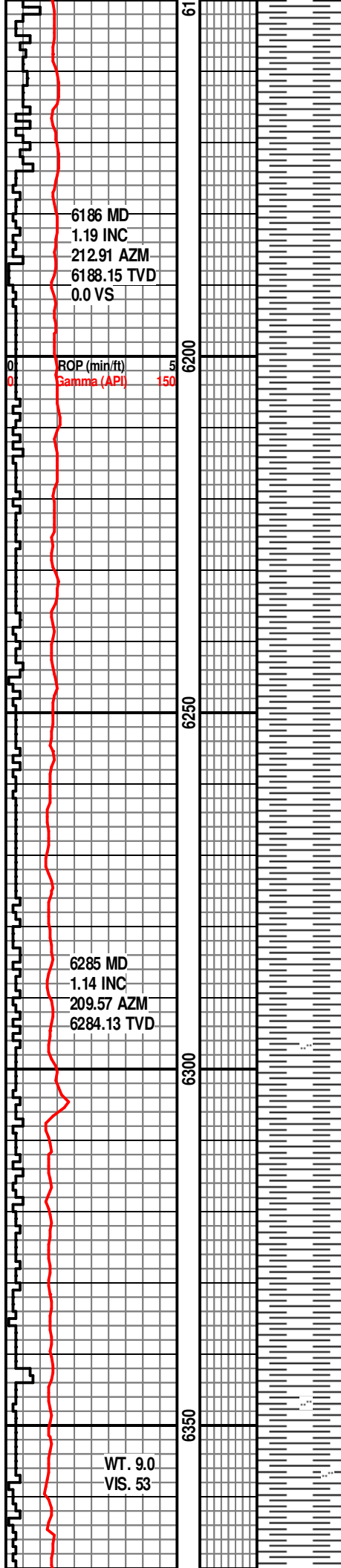
GEOLOGIST

Name: Todd Thiesse,
Company: Tooke Rockies/ Weatherford SLS
Address: PO Box 435
Casper, WY. 82602
307.265.2124

Supervision

Project Geologist: John Ostergren- Conoco/Phillips
Drilling Engineer: Ricardo Avila- Conoco/Phillips
Drilling Sup: Bob Strickler- Conoco/Phillips
Company Rep: Richard Perez, Frank Holubec(Day Leads)
Company Rep: Drew Friedrichs, Wes Evans(Night Leads)
Well Site Safety: Rainey Schexnider, Nick Atkinson



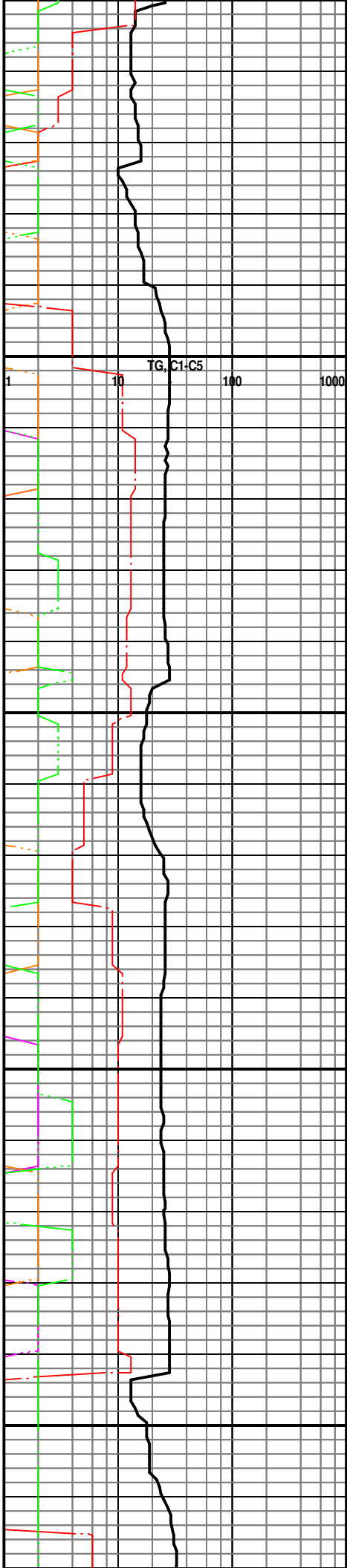


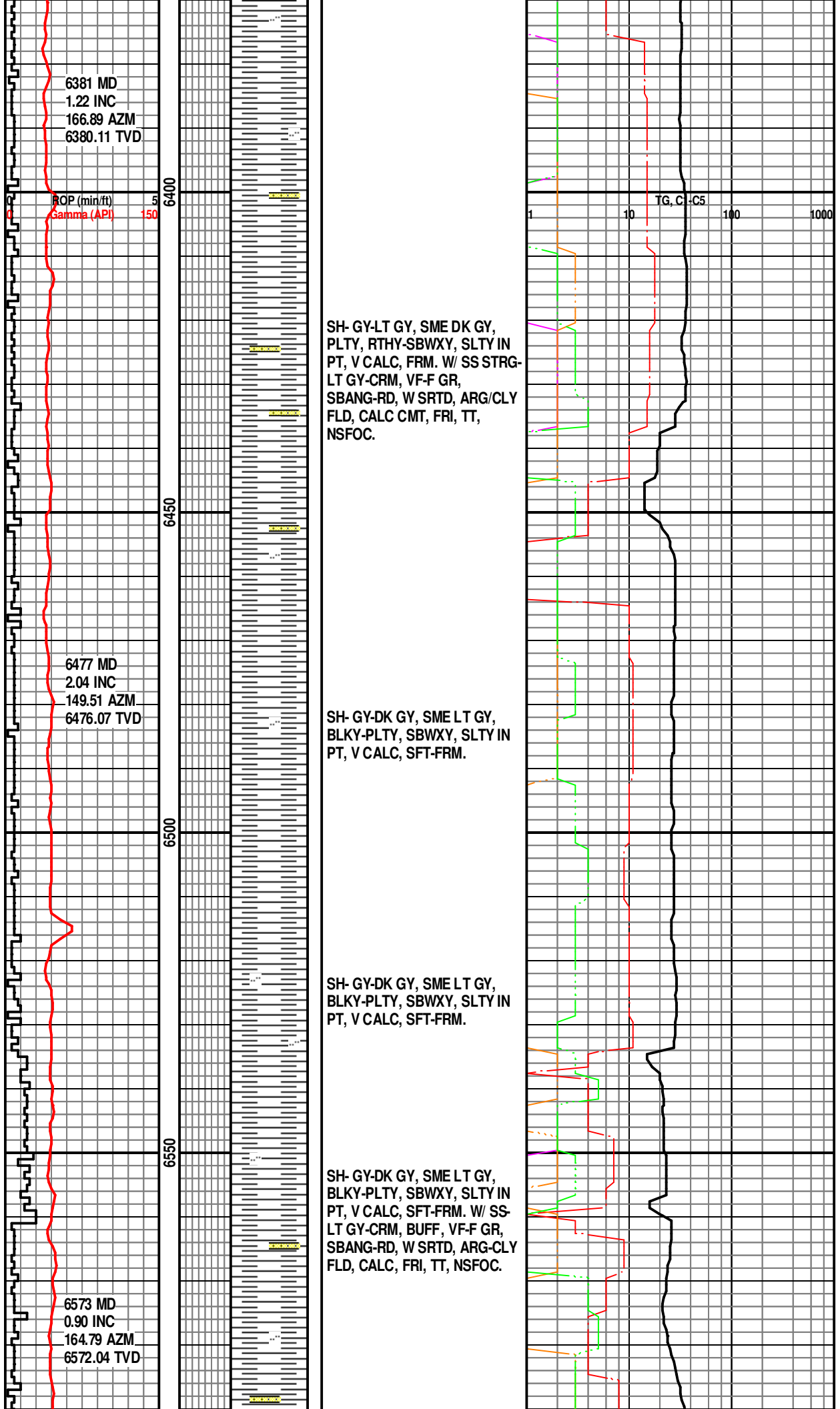
SH- GY-LT GY, OCC DK GY,
PLTY, RTHY-SBWXY, V CALC,
FRM.

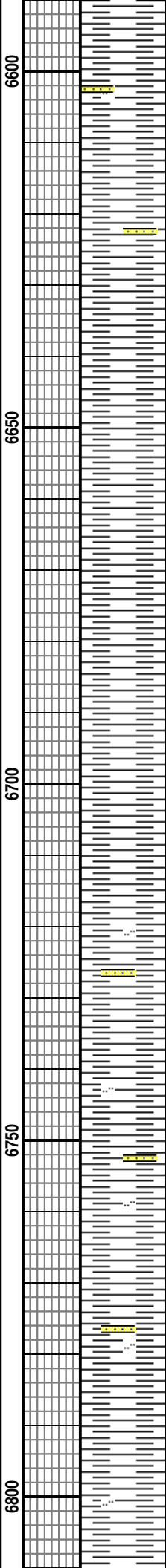
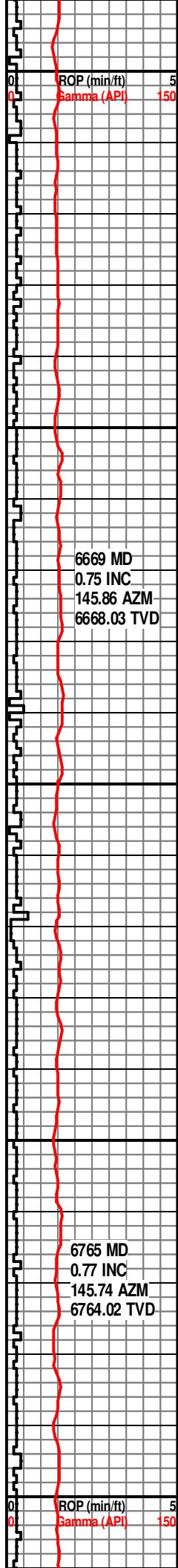
SH- GY-OCC DK GY, LT GY,
PLTY, RTHY-SBWXY, SLTY IN
PT, V CALC, FRM.

SH- GY-OCC DK GY, LT GY,
PLTY, RTHY-SBWXY, SLTY IN
PT, V CALC, FRM.

SH- GY-LT GY, OCC DK GY,
PLTY, RTHY-SBWXY, SLTY IN
PT, V CALC, FRM.



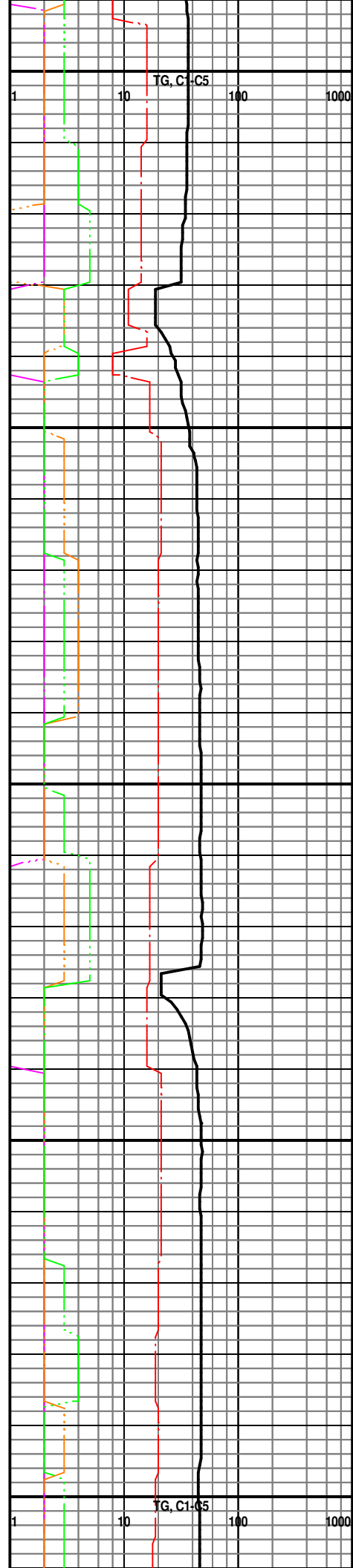


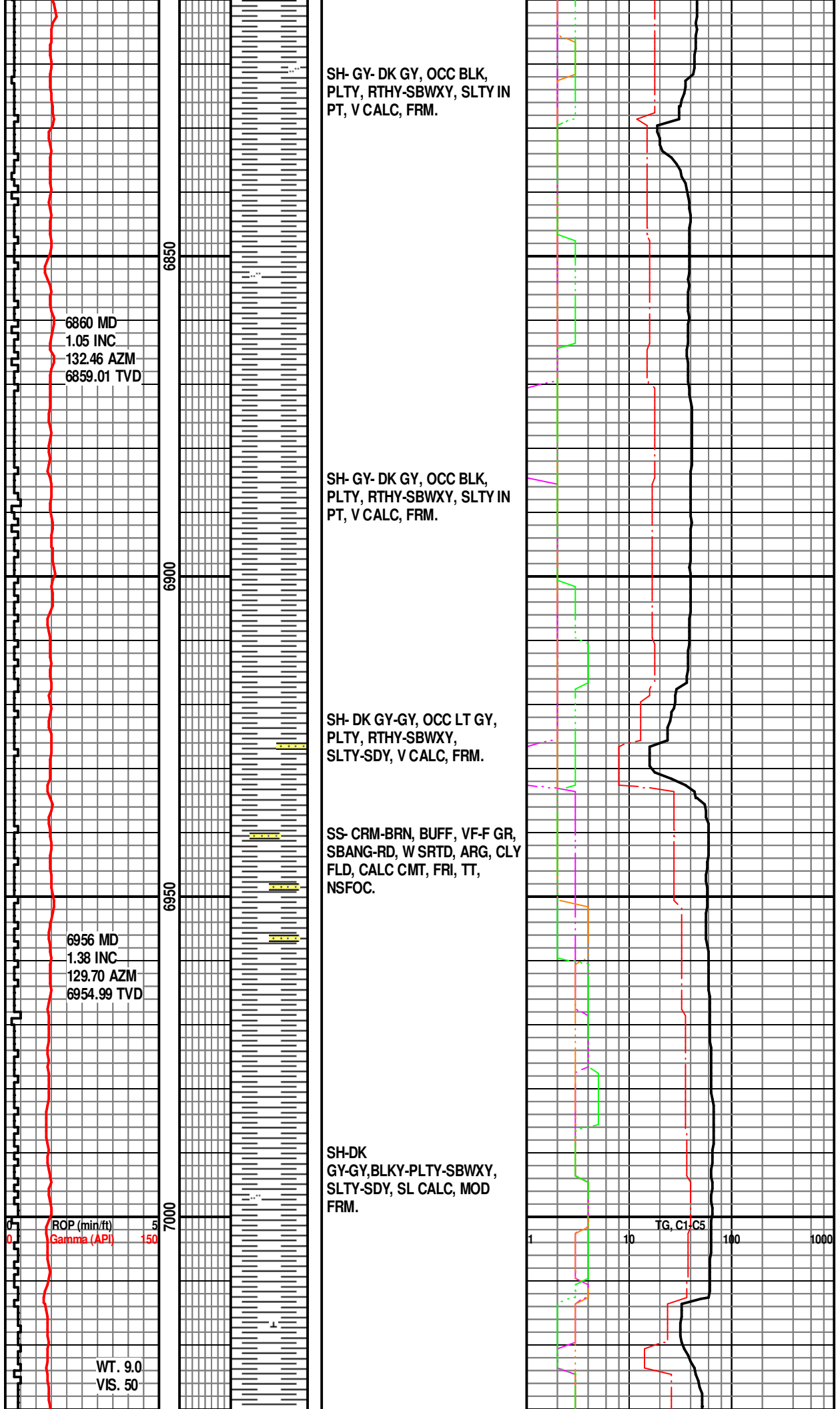


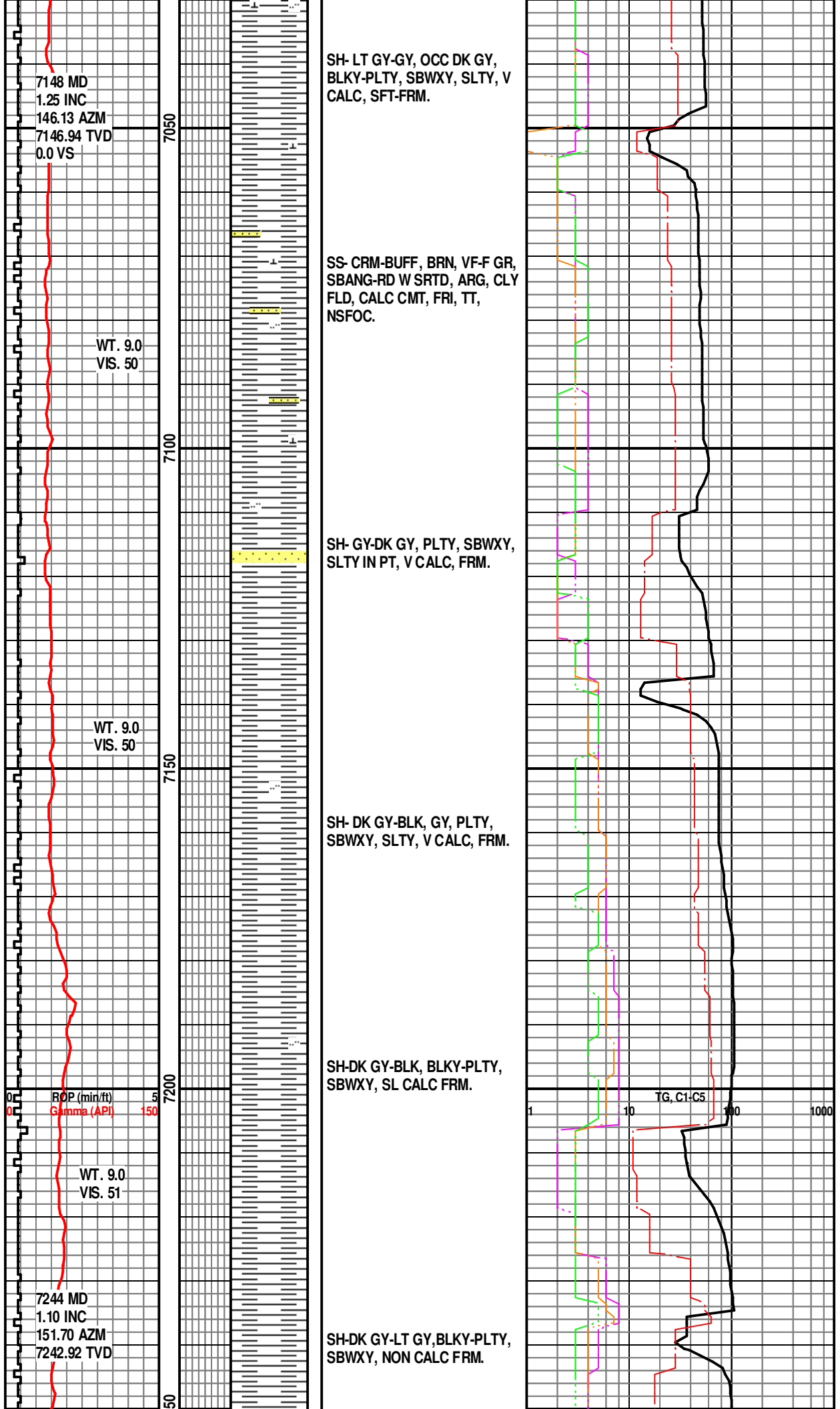
SH- LT GY-GY, OCC DK GY,
BLKY-PLTY, SBWXY, SLTY, V
CALC, SFT-FRM.

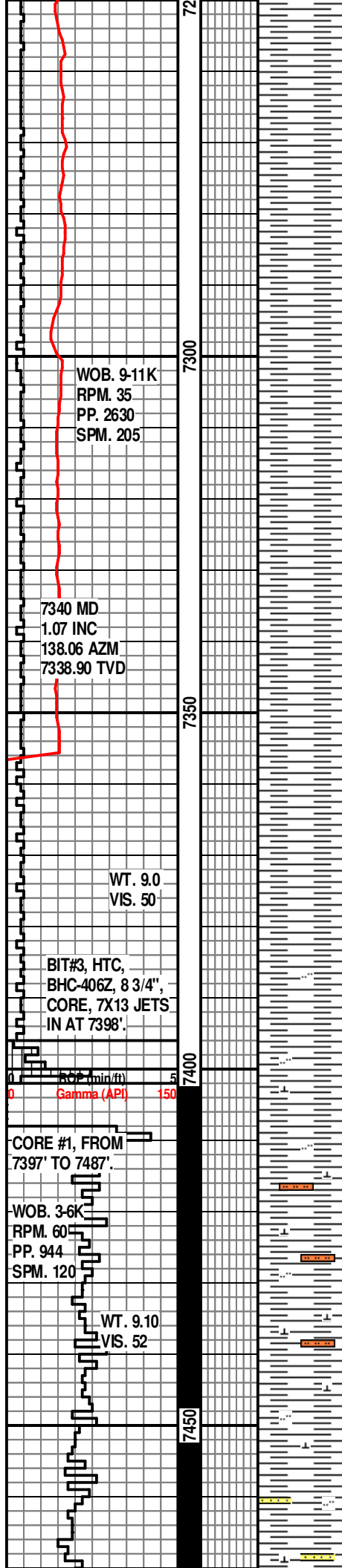
SH- LT GY-GY, OCC DK GY,
BLKY-PLTY, SBWXY, SLTY, V
CALC, SFT-FRM.

SH- GY-LT GY, BLKY-PLTY,
RTHY-SBWXY, SLTY IN PT, V
CALC, SFT-FRM. W/ SS- LT
GY-CRM, BUFF, VF-F GR,
SBANG-RD, W SRTD, ARG-CLY
FLD, CALC, FRI, TT, NSFOC.









WOB. 9-11K
RPM. 35
PP. 2630
SPM. 205

7340 MD
1.07 INC
138.06 AZM
7338.90 TVD

WT. 9.0
VIS. 50

BIT#3, HTC,
BHC-406Z, 8 3/4",
CORE, 7X13 JETS
IN AT 7398'.

0 50 100 150
Gamma (API)

CORE #1, FROM
7397' TO 7487'.

WOB. 3-6K
RPM. 60
PP. 944
SPM. 120

WT. 9.10
VIS. 52

SH-DK GY-BLK, BLKY-PLTY,
SBWXY, SL CALC FRM.

SH-DK GY-LT GY,BLYK-PLTY,
SBWXY, CALC, FRM.

SH-DK GY, BLKY-PLTY,
SBWXY, SL CALC, FRM.

1/3-4/2012

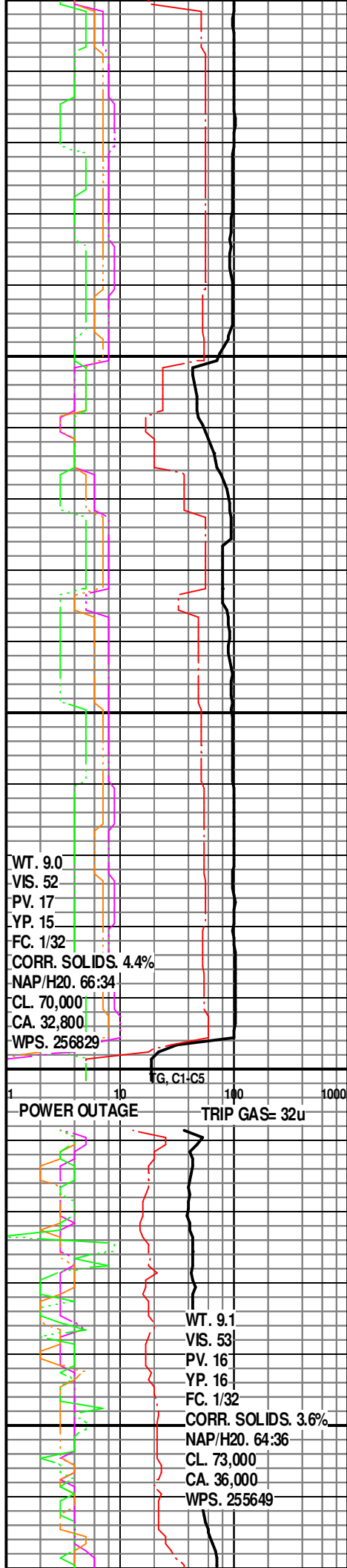
TRIP FOR CORE
TOOLS AT 7397 FT.

SH-DK GY, GY, BLK, PLTY,
RTHY-SBWXY, SLTY IN PT,
CALC, SFT-FRM.

SH- GY-DK GY, PLTY,
RTHY-SBWXY, V SLTY-SDY
GRDG TO SLTST, CALC-V
CALC, SFT-FRM.

SH-DK GY, GY, PLTY, SBWXY,
V SLTY IN PT, V CALC-LMN,
SFT-FRM. W/ TR SLTST-CRM,
LT GY, ARG, V CALC, OCC
CARB SPECS, FRI, NSFOC.

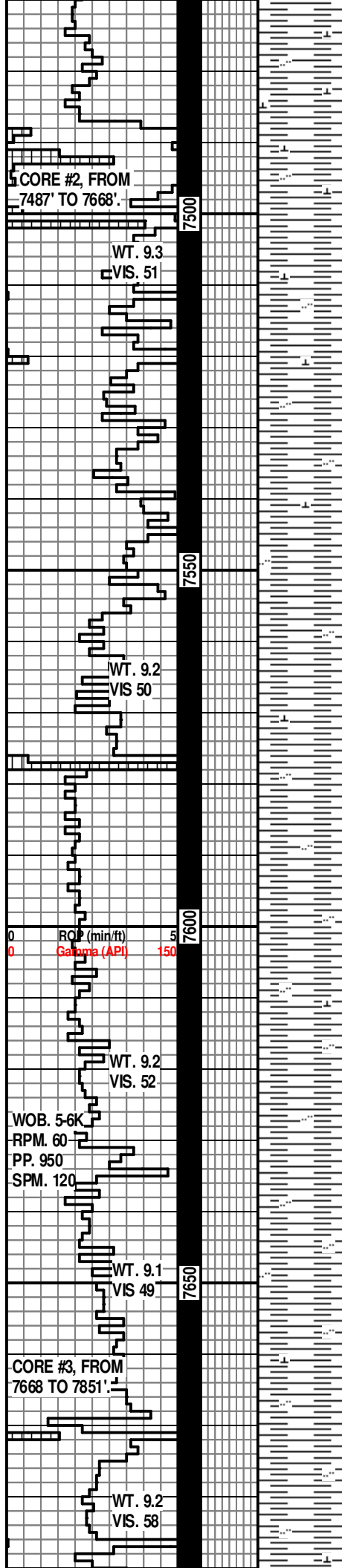
SH-AA W/ SS-CRM, TAN, VF-F
GR, SBANG-RD, W SRD,
ARG-CLY FLD, V CALC, FRI,
TT, NSFOC



WT. 9.0
VIS. 52
PV. 17
YP. 15
FC. 1/32
CORR. SOLIDS. 4.4%
NAP/H2O. 66:34
CL. 70,000
CA. 32,800
WPS. 256829

1 10 100 1000
G, C1-C5
POWER OUTAGE
TRIP GAS= 32u

WT. 9.1
VIS. 53
PV. 16
YP. 16
FC. 1/32
CORR. SOLIDS. 3.6%
NAP/H2O. 64:36
CL. 73,000
CA. 36,000
WPS. 255649



11, NSFUC.

SH- DK GY, GY, PLTY,
RTHY-SBWXY, SLTY, V
CALC-LMY, SFT-FRM.

**TRIP FOR JAMMED
CORE BBL. AT 7487'.
1/5/2012**

SH- GRY, MED GRY, PLTY,
RTHY-SUBWXY, WK CALC,
FAINT CALC LAM, SL SLTY,
SFT-MOD FRM, NOSFC.

SH- GRY, FISSILE, SUBWXY,
WK CALC, CALC CLASTS,
SLTY, SFT-MOD FRM, NOSFC.

SH- GRY, FISSILE,
RTHY-SUBWXY, NON-WK
CALC, CALC CLASTS, SLTY,
SFT-MOD FRM, NOSFC.

SH- GRY, FISSILE,
RTHY-SUBWXY, NON-WK
CALC, OCC CALC CLASTS,
LAM, SLTY, SFT-MOD FRM,
NOSFC.

SH- GRY, FISSILE,
RTHY-SUBWXY, NON-WK
CALC, OCC CALC CLASTS,
LAM, SLTY, SFT-MOD FRM,
NOSFC.

SH- MED GRY-GRY, FISSILE,
RTHY-SUBWXY, NON-WK
CALC, OCC CALC CLASTS,
LAM, SLTY, SFT-MOD FRM.

1/6/2012

SH- MED GRY-GRY, FISSILE,
RTHY-SUBWXY, NON-WK
CALC, OCC CALC CLASTS,
LAM, SLTY, SFT-MOD FRM,
NOSFC.

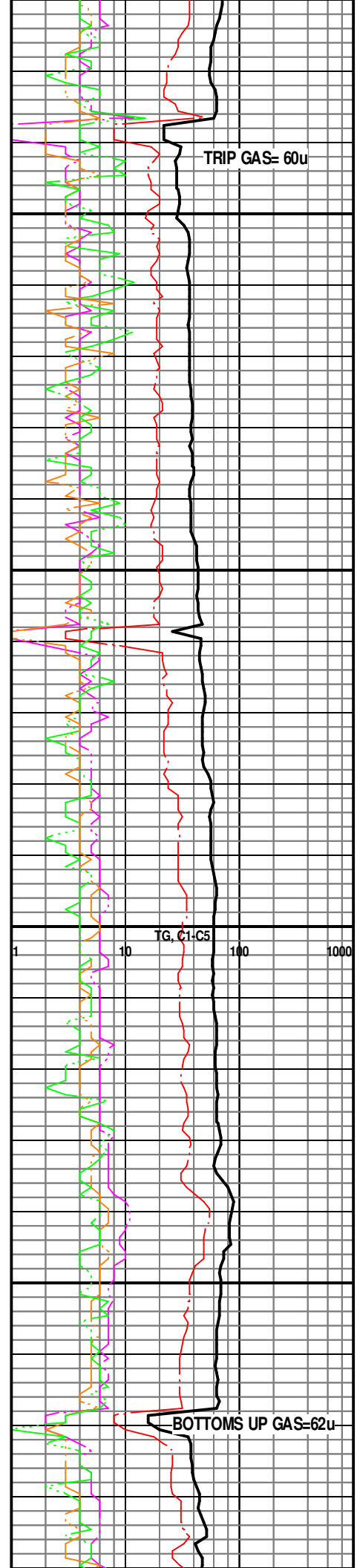
SH- MED GRY-GRY, FISSILE,
RTHY-SUBWXY, NON-WK
CALC, OCC CALC CLASTS,
LAM, SLTY, SFT-MOD FRM,
NOSFC.

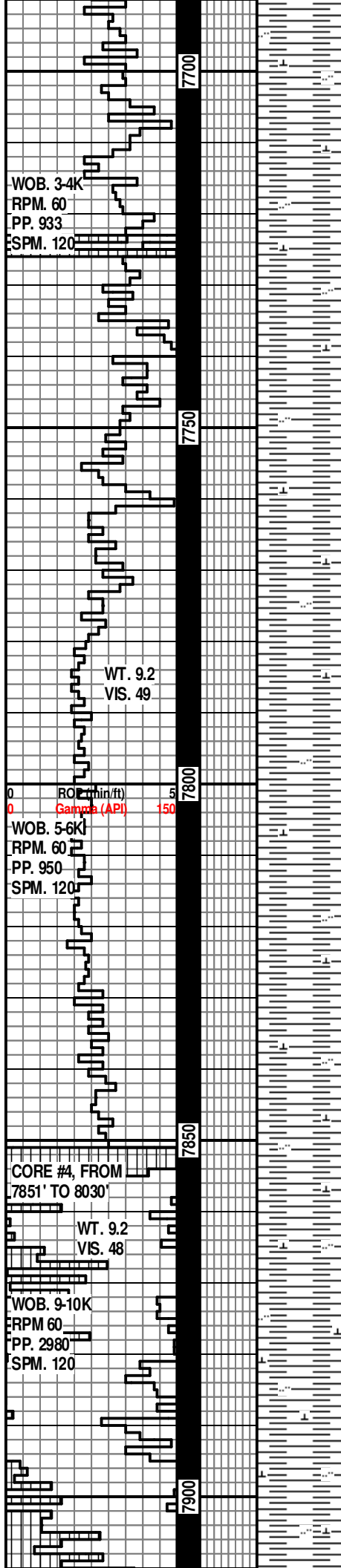
**Trip to Retrieve
Core#2 @ 7668'**

1/7/2012

**Drilling resumed for
Core #3 @ 0350**

SH- MED GRY, BLKY,





RTHY-SUBWXY, MOD-HIGHLY
CALC WHEN CRUSHED, OCC
CALC CLASTS, LAM, SLTY,
SFT-MOD FRM, NOSFC.

SH- DK GY, GY, PLTY,
RTHY-SBWXY, SME CARB
LAM, SLTY, CALC, FRM.

**ESTIMATED TOP OF
NIOBRARA AT 7726'.**

SH- GY-DK GY, PLTY, SBWXY,
SLTY, OCC CARB LAM, CALC,
FRM.

SH- GY, DK GY, PLTY, SBWXY,
SLTY IN PT, SME CARB LAM &
SPECS, V CALC, FRM. W/ TR
LT GY MUDSTN.

SH- DK GY, GY, PLTY,
RTHY-SBWXY, SLTY, OCC
CARB LAM, V CALC, FRM.

SH- GY, DK GY, PLTY,
RTHY-SBWXY, SME CARB LAM
& SPECS, SLTY, CALC, FRM.

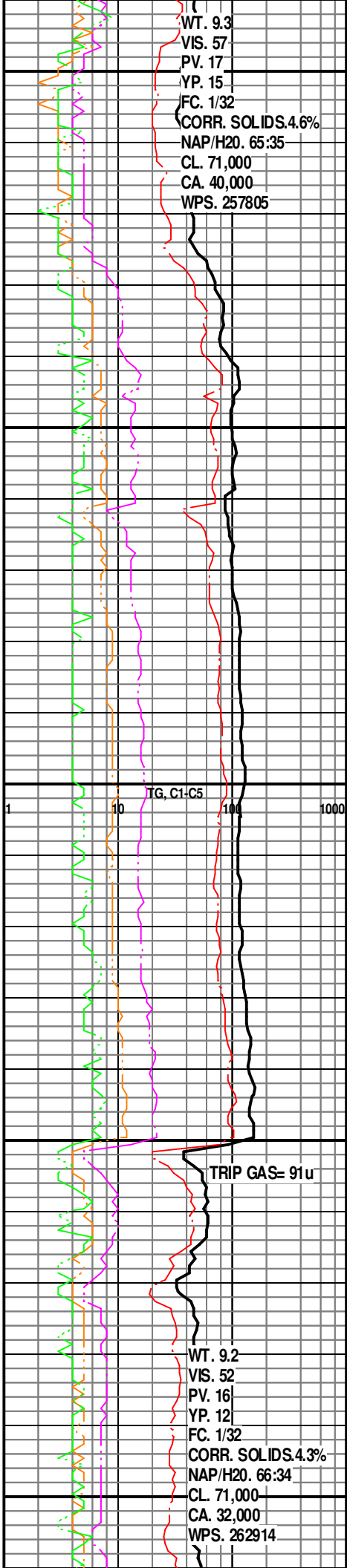
SH- DK GY, GY, PLTY,
RTHY-SBWXY, SLTY, V CALC,
OCC CARB LAM, SFT-FRM.

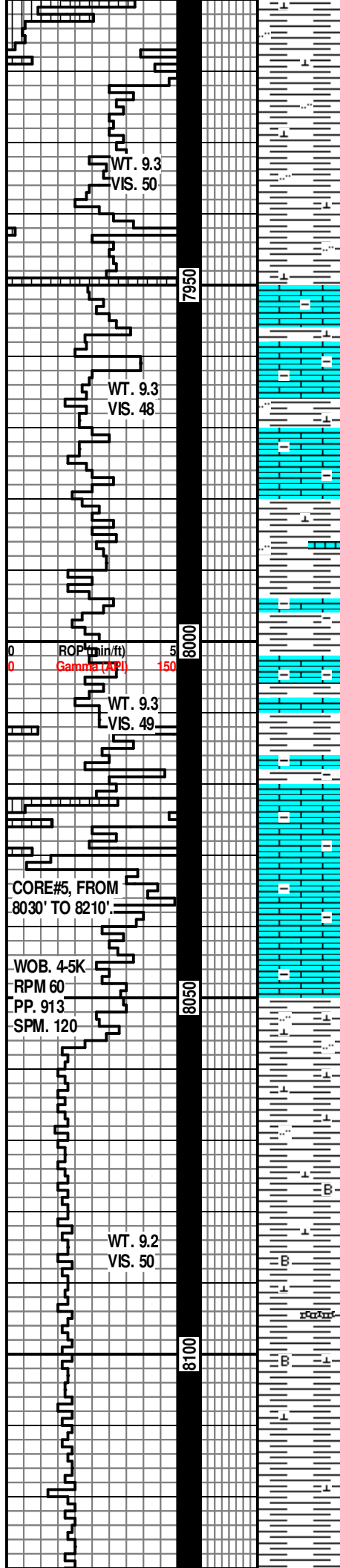
**TRIP OUT WITH CORE
#3 AT 7851'.
1/8/2012**

SH- DK GY-M GY, PLTY,
RTHY-SBWXY, SLTY IN PT, V
CALC, TR CALC NOD, OCC
CARB LAM, SFT-FRM.

SH- DK GY-M GY, PLTY,
RTHY-SBWXY, SLTY IN PT, V
CALC, CALC NOD, OCC CARB
LAM, OCC FRAC-OCC CALC
FL, SFT.

SH- DK GY-M GY, PLTY,
RTHY-SBWXY, SLTY, V CALC,
CALC NOD, OCC CARB LAM





SH- DK GY-M GY, PLTY,
RTHY-SBWXY, SLTY, V CALC,
CALC NOD, OCC CARB LAM,
OCC FRAC-COM CALC FL,
SFT-FRM.

SH- DK GY-M GY, PLTY,
RTHY-SBWXY, SLTY, V CALC,
CALC NOD, OCC CARB LAM,
OCC FRAC-COM CALC FL,
SFT.

1/9/2012

LS- LT GRY/GN, BANDED,
MICXL, ARG, FR-TIGHT INTXL
POR.
SH- M GRY, LAM, PLTY,
SBWXY, CALC, OCC FRAC,
SFT-MOD FIRM.

LS- TAN-BUF, MICXL, V ARG,
TT INTXL POR, FRM, NSFOC.

SH- M GY, PLTY,
RTHY-SBWXY, SLTY IN PT, V
CALC, SFT-FRM.

LS- TAN, LT BRN, BUFF,
CRRXL-MICXL, V ARG, TT
INTPART POR, SFT-FRM,
NSFOC.

TRIP OUT WITH
CORE#4 AT 8030'.

1/10/2012

LS- TAN, BUFF, PLTY,
CRRXL-MICXL, ARG, TT
INTPART POR, SFT-FRM,
NSFOC.

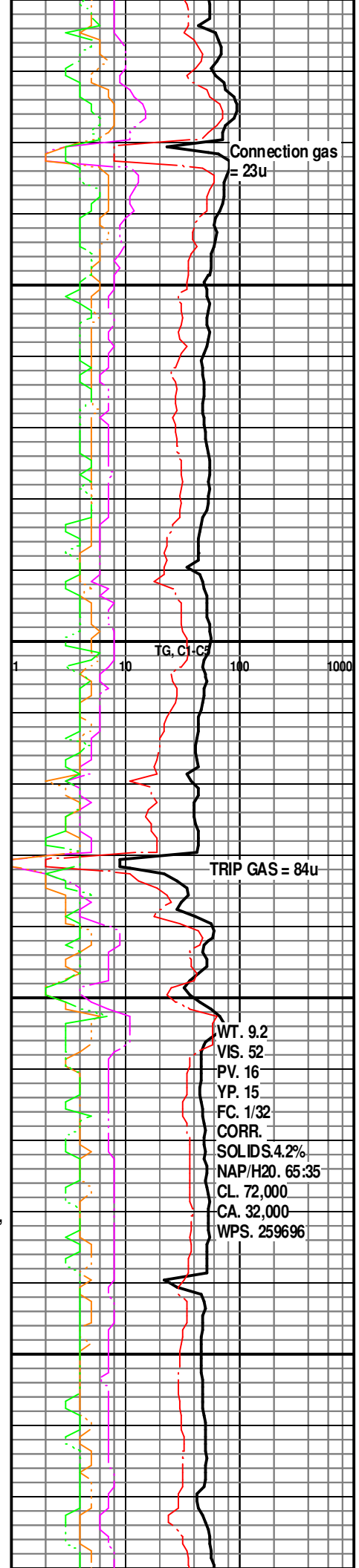
SH- GY-DK GY, PLTY,
RTHY-SBWXY, OCC SLTY, V
CALC GRDG TO LS, TR CARB
LAM, SFT-FRM.

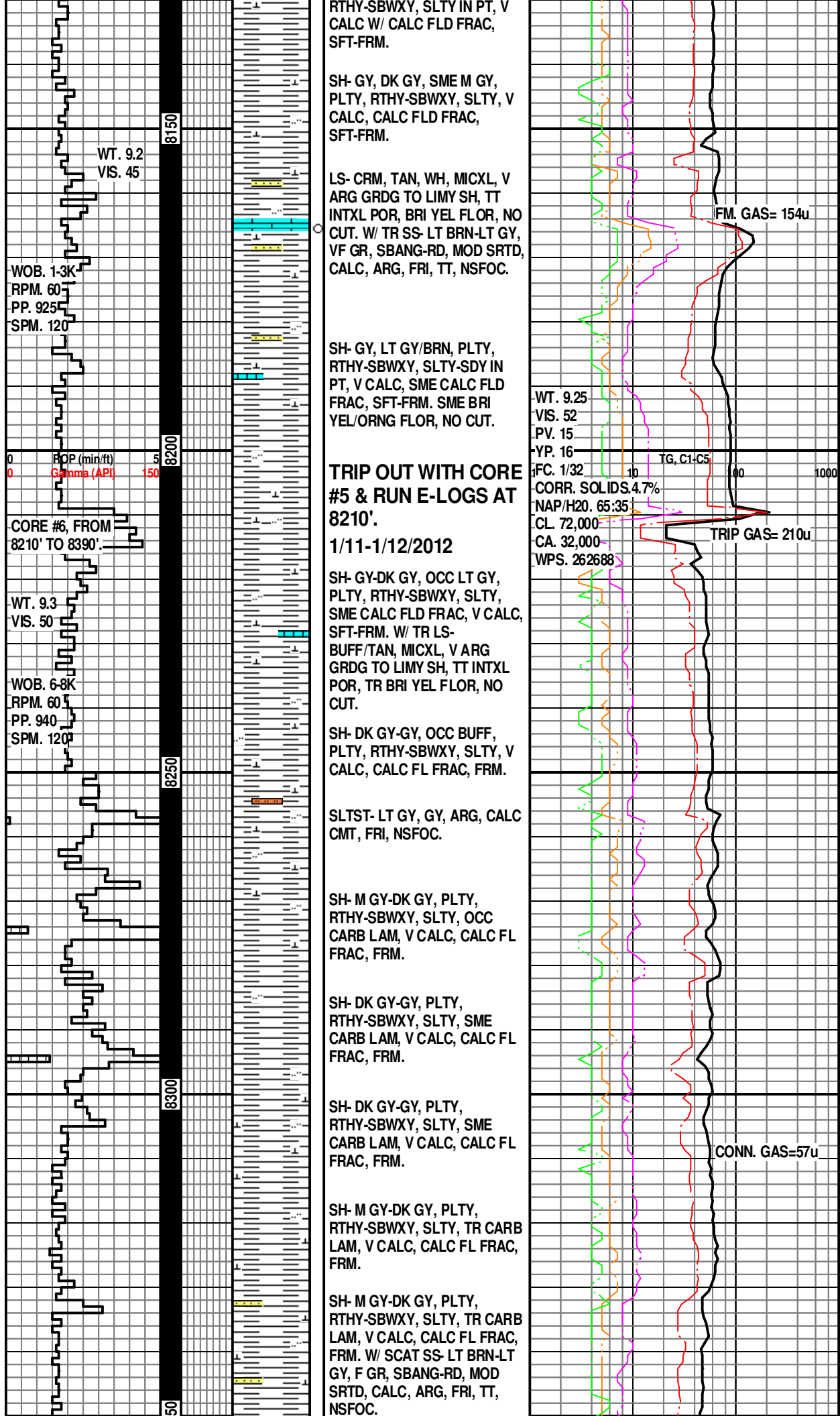
SH- GY, DK GY, PLTY, SBWXY,
SLTY, V CALC, SME CARB
LAM, SFT-FRM.

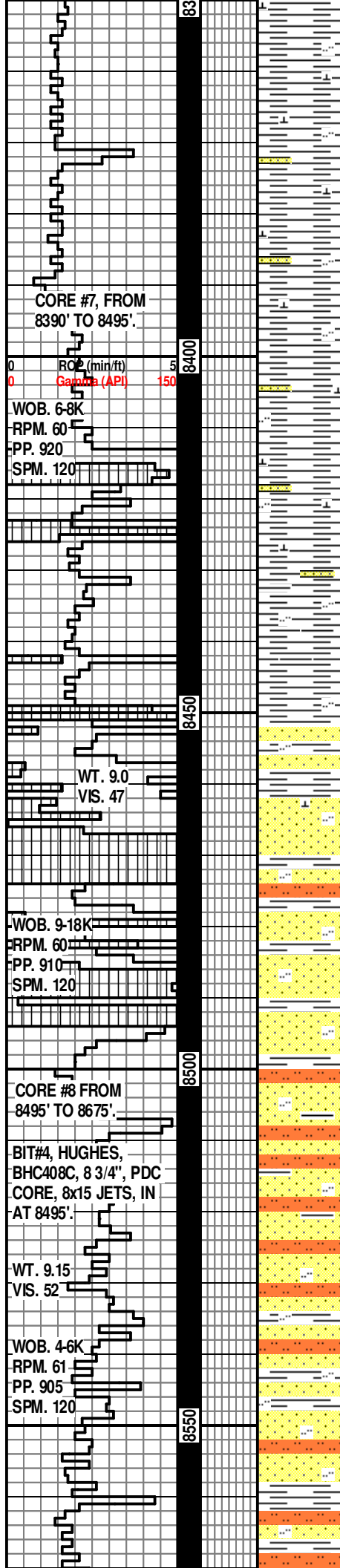
SH- DK GY-GY, PLTY,
RTHY-SBWXY, V CALC, CALC
FLD FRAC, OCC CARB LAM,
SFT-FRM. W/ TR
BENT-WH-CRM.

SH- DK GY, GY, PLTY,
RTHY-SBWXY, SLTY IN PT, V
CALC W/ CALC FLD FRAC,
SFT-FRM.

SH- DK GY, GY, PLTY,







SH- DK GY-GY, PLTY,
RTHY-SBWXY, SLTY, SME
CARB LAM, CALC, CALC FL
FRAC, FRM.

SH- M GY-DK GY, PLTY,
RTHY-SBWXY, SLTY, TR CARB
LAM, V CALC, CALC FL FRAC,
FRM. W/ SCAT SS- LT BRN-LT
GY, F GR, SBANG-RD, MOD
SRTD, CALC, ARG, FRI, TT,
NSFOC.

TRIP OUT WITH CORE#6 AT 8390'. 1/13/2012

SH- M GY-DK GY, PLTY,
RTHY-SBWXY, SLTY, V CALC,
CALC FL FRAC, FRM. W/SCAT
SS- LT TN-LT GR/GY, F GR,
SBANG-RD, MOD SRTD, CALC,
ARG, FRI, TT, NSFOC.

1/14/2012

SS- LT BRN-BRN, OCC DK
BRN, VF GR, SBANG-RD, MOD
SRTD, SL CALC, ARG, FRI, TT,
NSFOC.

SH- M-LT GY, OCC DK GY,
PLTY, RTHY-SBWXY, SLTY IN
PT, SL CALC, SFT-FRM.

SS- CRM-TAN, BRN, VF-F GR,
SBANG-RD, W SRTD, ARG-CLY
FL, SL-NON CALC, FRI, TT,
NSFOC.

SS- WH, LT GY, TAN, VF-F GR,
SBANG, W SRTD, SME CARB
SPECS, ARG-CLY FL, SL CALC,
FRI, TT, NSFOC.

SLTST- GY, LT GY, QTZ, ARG,
SL-NON CALC, FRI-FRM,
NSFOC.

SS- WH, CLR, LT BRN, VF-M
GR, SBANG-RD, W SRTD, OCC
CARB SPECS, SLTY, SL CALC,
TT, FRI, NSFOC.

TRIP OUT WITH CORE #7 AT 8495'.

1/15/2012

SLTST- LT GY, GY, QTZ, V
ARG, NON-SL CALC, FRI-FRM,
TT, NSFOC.

SS- LT GY-WH, GY, VF-F GR,
SBANG-RD, W SRTD, ARG,
OCC TINY CARB SPECS, SL
CALC, FRI-FRM, TT, NSFOC.

SH- GY-M GY, PLTY,
RTHY-SBWXY, V SLTY IN PT,
SL CALC, SFT-FRM.

SLTST- GY, LT GY, SME DK
GY, QTZ, ARG, SL CALC, FRI,
TT, NSFOC.

SH- GY, DK GY, PLTY,
RTHY-SBWXY, SLTY-SDY,

