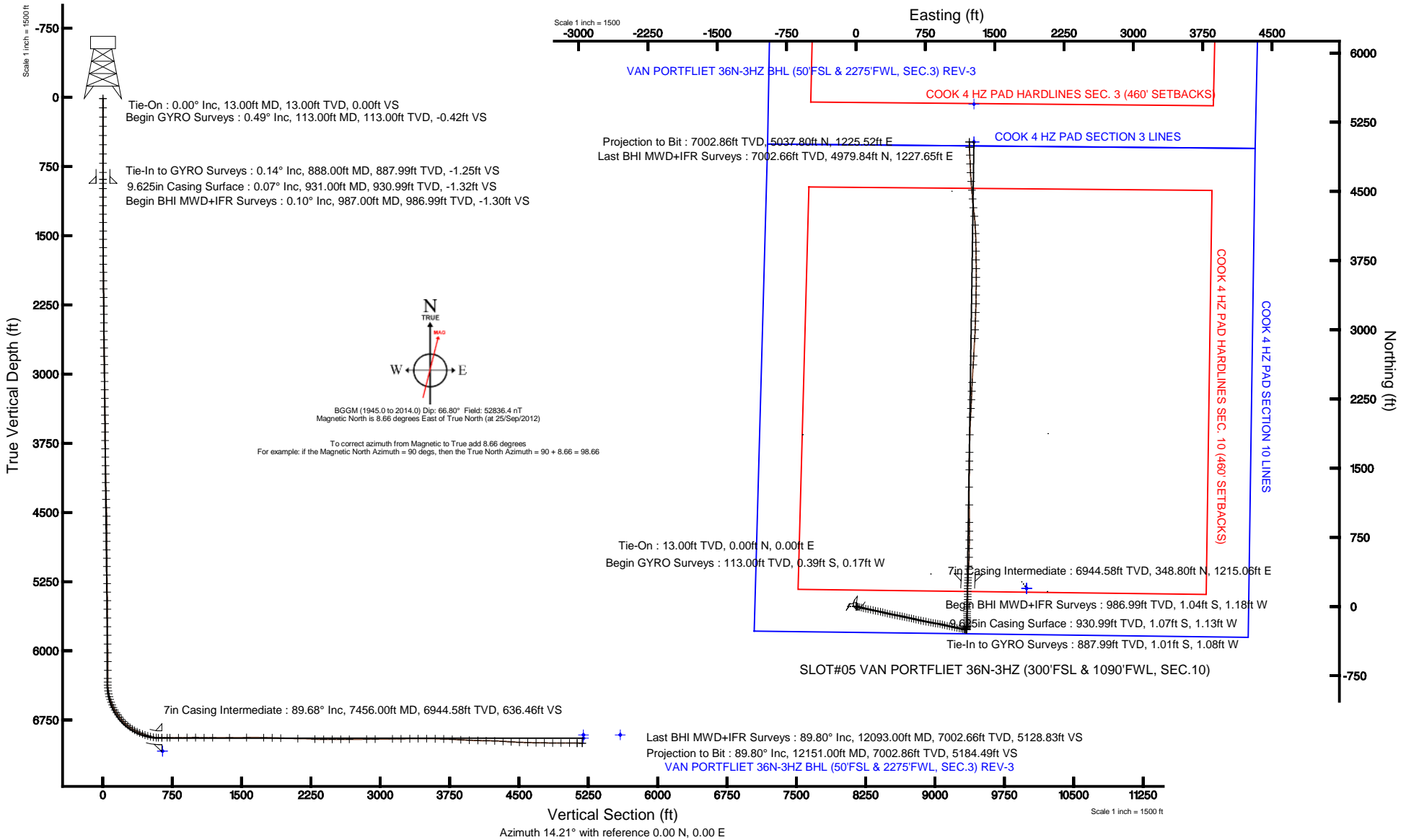


KERR-MCGEE OIL & GAS ONSHORE LP

Location: COLORADO Slot: SLOT#05 VAN PORTFLIET 36N-3HZ (300'FSL & 1090'FWL, SEC.10)
 Field: WELD COUNTY (KERR MCGEE) Well: VAN PORTFLIET 36N-3HZ
 Facility: SEC.10-T2N-R65W Wellbore: VAN PORTFLIET 36N-3HZ PWB

Plot reference wellpath is VAN PORTFLIET 36N-3HZ (REV-B.0) PWP

True vertical depths are referenced to ENSIGN 138 (RKB)	Grid System: NAD83 / Lambert Colorado SP, Northern Zone (501), US feet
Measured depths are referenced to ENSIGN 138 (RKB)	North Reference: True north
ENSGIN 138 (RKB) to Mean Sea Level: 4875 feet	Scale: True distance
Mean Sea Level to Mud line (At Slot: SLOT#05 VAN PORTFLIET 36N-3HZ (300'FSL & 1090'FWL, SEC.10)): 0 feet	Depths are in feet
Coordinates are in feet referenced to Slot	Created by: augunora on 07/Nov/2012





Actual Wellpath Report

VAN PORTFLIET 36N-3HZ AWP

Page 1 of 7



REFERENCE WELLPATH IDENTIFICATION

Operator	KERR-MCGEE OIL & GAS ONSHORE LP	Slot	SLOT#05 VAN PORTFLIET 36N-3HZ (300'FSL & 1090'FWL, SEC.1
Area	COLORADO	Well	VAN PORTFLIET 36N-3HZ
Field	WELD COUNTY (KERR MCGEE)	Wellbore	VAN PORTFLIET 36N-3HZ AWB
Facility	SEC.10-T2N-R65W		

REPORT SETUP INFORMATION

Projection System	NAD83 / Lambert Colorado SP, Northern Zone (501), US feet	Software System	WellArchitect® 3.0.0
North Reference	True	User	Augunora
Scale	0.999958	Report Generated	07/Nov/2012 at 15:04
Convergence at slot	0.55° East	Database/Source file	WA_ANADARKO/VAN_PORTFLIET_36N-3HZ_AWB.xml

WELLPATH LOCATION

	Local coordinates		Grid coordinates		Geographic coordinates	
	North[ft]	East[ft]	Easting[US ft]	Northing[US ft]	Latitude	Longitude
Slot Location	-194.83	-1846.28	3236012.26	1297445.81	40°08'48.476"N	104°39'20.632"W
Facility Reference Pt			3237856.50	1297658.34	40°08'50.402"N	104°38'56.857"W
Field Reference Pt			3197771.84	1268891.29	40°04'09.600"N	104°47'36.000"W

WELLPATH DATUM

Calculation method	Minimum curvature	ENSIGN 138 (RKB) to Facility Vertical Datum
Horizontal Reference Pt	Slot	ENSIGN 138 (RKB) to Mean Sea Level
Vertical Reference Pt	ENSIGN 138 (RKB)	ENSIGN 138 (RKB) to Mud Line at Slot (SLOT#05 VAN PORTFLIET 36N-3HZ (300'FSL &
MD Reference Pt	ENSIGN 138 (RKB)	Section Origin
Field Vertical Reference	Mean Sea Level	Section Azimuth



Actual Wellpath Report

VAN PORTFLIET 36N-3HZ AWP

Page 2 of 7



REFERENCE WELLPATH IDENTIFICATION

Operator	KERR-MCGEE OIL & GAS ONSHORE LP	Slot	SLOT#05 VAN PORTFLIET 36N-3HZ (300'FSL & 1090'FWL, SEC.1)
Area	COLORADO	Well	VAN PORTFLIET 36N-3HZ
Field	WELD COUNTY (KERR MCGEE)	Wellbore	VAN PORTFLIET 36N-3HZ AWB
Facility	SEC.10-T2N-R65W		

WELLPATH DATA (145 stations) † = interpolated/extrapolated station

MD [ft]	Inclination [°]	Azimuth [°]	TVD [ft]	Vert Sect [ft]	North [ft]	East [ft]	Latitude	Longitude	DLS [°/100ft]	Comments
0.00†	0.000	203.360	0.00	0.00	0.00	0.00	40°08'48.476"N	104°39'20.632"W	0.00	
13.00	0.000	203.360	13.00	0.00	0.00	0.00	40°08'48.476"N	104°39'20.632"W	0.00	Tie-On
113.00	0.490	203.360	113.00	-0.42	-0.39	-0.17	40°08'48.472"N	104°39'20.634"W	0.49	Begin GYRO Surveys
213.00	0.410	165.700	213.00	-1.16	-1.13	-0.25	40°08'48.465"N	104°39'20.635"W	0.30	
313.00	0.400	152.010	312.99	-1.74	-1.79	0.00	40°08'48.458"N	104°39'20.632"W	0.10	
413.00	0.150	102.860	412.99	-1.99	-2.12	0.29	40°08'48.455"N	104°39'20.628"W	0.32	
513.00	0.450	330.380	512.99	-1.71	-1.81	0.23	40°08'48.458"N	104°39'20.629"W	0.56	
613.00	0.420	296.700	612.99	-1.34	-1.31	-0.30	40°08'48.463"N	104°39'20.636"W	0.25	
713.00	0.310	308.010	712.99	-1.14	-0.97	-0.84	40°08'48.466"N	104°39'20.643"W	0.13	
813.00	0.080	176.860	812.99	-1.10	-0.88	-1.04	40°08'48.467"N	104°39'20.645"W	0.37	
888.00	0.140	206.810	887.99	-1.24	-1.01	-1.08	40°08'48.466"N	104°39'20.646"W	0.11	Tie-In to GYRO Surveys
987.00	0.100	331.400	986.99	-1.29	-1.04	-1.18	40°08'48.466"N	104°39'20.647"W	0.22	Begin BHI MWD+IFR Surveys
1080.00	1.500	99.900	1079.98	-1.15	-1.18	-0.02	40°08'48.464"N	104°39'20.632"W	1.68	
1173.00	3.700	98.700	1172.87	-0.81	-1.85	4.15	40°08'48.458"N	104°39'20.579"W	2.37	
1266.00	5.700	100.700	1265.56	-0.31	-3.16	11.65	40°08'48.445"N	104°39'20.482"W	2.16	
1358.00	8.400	100.400	1356.85	0.31	-5.22	22.75	40°08'48.424"N	104°39'20.339"W	2.94	
1451.00	10.700	105.300	1448.56	0.45	-8.72	37.76	40°08'48.390"N	104°39'20.146"W	2.62	
1544.00	13.200	104.100	1539.54	0.13	-13.59	56.39	40°08'48.342"N	104°39'19.906"W	2.70	
1637.00	15.500	104.600	1629.63	-0.15	-19.31	78.72	40°08'48.285"N	104°39'19.618"W	2.48	
1730.00	16.900	102.100	1718.94	0.02	-25.28	103.96	40°08'48.226"N	104°39'19.293"W	1.68	
1823.00	16.600	100.600	1807.99	1.10	-30.55	130.24	40°08'48.174"N	104°39'18.955"W	0.57	
1916.00	17.100	102.200	1897.00	2.16	-35.89	156.66	40°08'48.121"N	104°39'18.615"W	0.73	
2011.00	16.800	103.300	1987.87	2.61	-42.00	183.67	40°08'48.061"N	104°39'18.267"W	0.46	
2105.00	16.900	101.600	2077.84	3.19	-47.87	210.28	40°08'48.003"N	104°39'17.924"W	0.53	
2201.00	16.700	101.400	2169.74	4.24	-53.40	237.47	40°08'47.948"N	104°39'17.574"W	0.22	
2296.00	16.200	101.200	2260.85	5.36	-58.67	263.85	40°08'47.896"N	104°39'17.234"W	0.53	
2391.00	16.000	103.800	2352.12	5.90	-64.37	289.56	40°08'47.840"N	104°39'16.903"W	0.79	
2486.00	15.900	105.500	2443.47	5.46	-70.97	314.82	40°08'47.775"N	104°39'16.578"W	0.50	
2581.00	16.200	104.400	2534.76	4.87	-77.74	340.19	40°08'47.708"N	104°39'16.251"W	0.45	
2676.00	16.600	100.400	2625.90	5.48	-83.49	366.38	40°08'47.651"N	104°39'15.914"W	1.26	
2771.00	16.200	101.600	2717.04	6.73	-88.60	392.71	40°08'47.600"N	104°39'15.575"W	0.55	
2865.00	17.700	100.900	2806.95	7.90	-93.94	419.58	40°08'47.548"N	104°39'15.229"W	1.61	
2960.00	16.800	100.900	2897.68	9.26	-99.27	447.25	40°08'47.495"N	104°39'14.873"W	0.95	
3055.00	16.400	100.200	2988.72	10.74	-104.24	473.93	40°08'47.446"N	104°39'14.529"W	0.47	
3150.00	15.800	101.600	3079.99	12.02	-109.22	499.80	40°08'47.397"N	104°39'14.196"W	0.75	
3245.00	15.800	101.700	3171.40	12.93	-114.44	525.13	40°08'47.345"N	104°39'13.870"W	0.03	
3340.00	15.900	104.800	3262.79	13.12	-120.39	550.38	40°08'47.286"N	104°39'13.545"W	0.90	
3435.00	15.000	102.100	3354.36	13.20	-126.29	574.98	40°08'47.228"N	104°39'13.228"W	1.21	
3530.00	15.300	98.900	3446.06	14.58	-130.80	599.38	40°08'47.183"N	104°39'12.914"W	0.94	
3625.00	16.100	103.900	3537.52	15.57	-135.91	624.56	40°08'47.133"N	104°39'12.589"W	1.65	
3720.00	16.600	104.700	3628.68	15.28	-142.52	650.47	40°08'47.068"N	104°39'12.256"W	0.58	
3815.00	16.400	102.900	3719.76	15.21	-148.95	676.67	40°08'47.004"N	104°39'11.918"W	0.58	
3910.00	16.500	101.100	3810.88	16.00	-154.54	702.98	40°08'46.949"N	104°39'11.580"W	0.55	
4005.00	16.600	99.800	3901.94	17.52	-159.45	729.59	40°08'46.900"N	104°39'11.237"W	0.40	
4100.00	17.100	101.700	3992.86	18.92	-164.59	756.64	40°08'46.849"N	104°39'10.889"W	0.78	

Actual Wellpath Report

VAN PORTFLIET 36N-3HZ AWP

Page 3 of 7

REFERENCE WELLPATH IDENTIFICATION

Operator	KERR-MCGEE OIL & GAS ONSHORE LP	Slot	SLOT#05 VAN PORTFLIET 36N-3HZ (300'FSL & 1090'FWL, SEC.1)
Area	COLORADO	Well	VAN PORTFLIET 36N-3HZ
Field	WELD COUNTY (KERR MCGEE)	Wellbore	VAN PORTFLIET 36N-3HZ AWB
Facility	SEC.10-T2N-R65W		

WELLPATH DATA (145 stations)

MD [ft]	Inclination [°]	Azimuth [°]	TVD [ft]	Vert Sect [ft]	North [ft]	East [ft]	Latitude	Longitude	DLS [°/100ft]	Comments
4195.00	16.500	101.100	4083.81	20.00	-170.02	783.55	40°08'46.796"N	104°39'10.542"W	0.66	
4290.00	15.500	101.400	4175.13	21.11	-175.13	809.24	40°08'46.745"N	104°39'10.211"W	1.06	
4385.00	16.100	100.100	4266.54	22.44	-179.95	834.65	40°08'46.698"N	104°39'09.884"W	0.73	
4480.00	15.700	98.100	4357.90	24.51	-184.07	860.34	40°08'46.657"N	104°39'09.553"W	0.71	
4575.00	15.100	97.400	4449.49	27.11	-187.47	885.34	40°08'46.623"N	104°39'09.231"W	0.66	
4670.00	14.500	100.800	4541.34	29.05	-191.30	909.29	40°08'46.585"N	104°39'08.923"W	1.11	
4765.00	16.100	104.600	4632.97	29.44	-196.85	933.72	40°08'46.531"N	104°39'08.608"W	1.99	
4860.00	16.700	105.000	4724.11	28.91	-203.70	959.66	40°08'46.463"N	104°39'08.274"W	0.64	
4955.00	16.700	102.700	4815.10	28.82	-210.23	986.16	40°08'46.398"N	104°39'07.933"W	0.70	
5050.00	16.500	100.800	4906.14	29.73	-215.76	1012.72	40°08'46.344"N	104°39'07.591"W	0.61	
5145.00	16.600	102.500	4997.21	30.68	-221.23	1039.22	40°08'46.290"N	104°39'07.250"W	0.52	
5240.00	16.800	102.600	5088.20	31.22	-227.16	1065.87	40°08'46.231"N	104°39'06.907"W	0.21	
5335.00	16.100	101.800	5179.31	31.91	-232.85	1092.16	40°08'46.175"N	104°39'06.568"W	0.77	
5430.00	13.400	101.100	5271.17	32.83	-237.66	1115.86	40°08'46.127"N	104°39'06.263"W	2.85	
5525.00	11.800	100.200	5363.88	33.91	-241.50	1136.23	40°08'46.089"N	104°39'06.001"W	1.70	
5620.00	9.800	100.400	5457.20	34.96	-244.68	1153.74	40°08'46.058"N	104°39'05.775"W	2.11	
5715.00	8.000	99.700	5551.05	35.88	-247.26	1168.21	40°08'46.032"N	104°39'05.589"W	1.90	
5810.00	6.000	108.600	5645.34	35.91	-249.95	1179.44	40°08'46.006"N	104°39'05.444"W	2.39	
5905.00	4.300	107.800	5739.95	35.23	-252.63	1187.53	40°08'45.979"N	104°39'05.340"W	1.79	
5999.00	3.200	79.100	5833.76	36.07	-253.21	1193.46	40°08'45.974"N	104°39'05.264"W	2.28	
6094.00	1.600	61.700	5928.67	38.06	-252.08	1197.24	40°08'45.985"N	104°39'05.215"W	1.83	
6189.00	0.800	318.300	6023.66	39.32	-250.95	1197.96	40°08'45.996"N	104°39'05.206"W	2.05	
6284.00	0.800	297.600	6118.65	39.86	-250.15	1196.93	40°08'46.004"N	104°39'05.219"W	0.30	
6379.00	0.500	226.900	6213.64	39.67	-250.13	1196.04	40°08'46.004"N	104°39'05.230"W	0.83	
6465.00	0.400	195.400	6299.64	39.06	-250.67	1195.69	40°08'45.999"N	104°39'05.235"W	0.31	
6507.00	0.400	197.100	6341.64	38.77	-250.95	1195.61	40°08'45.996"N	104°39'05.236"W	0.03	
6538.00	1.700	350.300	6372.64	39.08	-250.60	1195.50	40°08'45.999"N	104°39'05.237"W	6.66	
6570.00	4.100	3.400	6404.59	40.64	-248.99	1195.49	40°08'46.015"N	104°39'05.238"W	7.73	
6602.00	7.600	14.000	6436.42	43.88	-245.80	1196.07	40°08'46.047"N	104°39'05.230"W	11.40	
6634.00	11.200	18.200	6467.99	49.10	-240.79	1197.55	40°08'46.096"N	104°39'05.211"W	11.45	
6665.00	15.300	18.800	6498.16	56.18	-234.06	1199.81	40°08'46.163"N	104°39'05.182"W	13.23	
6697.00	17.400	17.100	6528.86	65.16	-225.48	1202.58	40°08'46.247"N	104°39'05.146"W	6.73	
6728.00	19.700	12.000	6558.25	75.01	-215.94	1205.03	40°08'46.342"N	104°39'05.115"W	9.07	
6760.00	23.200	5.200	6588.03	86.64	-204.38	1206.72	40°08'46.456"N	104°39'05.093"W	13.40	
6792.00	27.600	359.700	6616.94	100.08	-190.68	1207.25	40°08'46.591"N	104°39'05.086"W	15.59	
6823.00	31.500	356.700	6643.90	114.80	-175.41	1206.75	40°08'46.742"N	104°39'05.092"W	13.45	
6855.00	35.600	356.100	6670.56	131.68	-157.77	1205.63	40°08'46.917"N	104°39'05.107"W	12.85	
6887.00	37.600	356.300	6696.25	149.88	-138.73	1204.37	40°08'47.105"N	104°39'05.123"W	6.26	
6918.00	37.900	356.600	6720.76	168.01	-119.79	1203.20	40°08'47.292"N	104°39'05.138"W	1.13	
6950.00	40.800	358.800	6745.51	187.51	-99.52	1202.39	40°08'47.492"N	104°39'05.149"W	10.06	
6982.00	44.100	0.600	6769.12	208.47	-77.92	1202.29	40°08'47.706"N	104°39'05.150"W	10.99	
7013.00	47.400	1.800	6790.75	230.15	-55.73	1202.76	40°08'47.925"N	104°39'05.144"W	11.00	
7045.00	52.000	2.500	6811.44	254.06	-31.35	1203.68	40°08'48.166"N	104°39'05.132"W	14.47	
7077.00	54.500	2.900	6830.58	279.23	-5.74	1204.89	40°08'48.419"N	104°39'05.116"W	7.88	
7108.00	56.900	3.100	6848.05	304.39	19.83	1206.23	40°08'48.672"N	104°39'05.099"W	7.76	

Actual Wellpath Report

VAN PORTFLIET 36N-3HZ AWP

Page 4 of 7

REFERENCE WELLPATH IDENTIFICATION

Operator	KERR-MCGEE OIL & GAS ONSHORE LP	Slot	SLOT#05 VAN PORTFLIET 36N-3HZ (300'FSL & 1090'FWL, SEC.1)
Area	COLORADO	Well	VAN PORTFLIET 36N-3HZ
Field	WELD COUNTY (KERR MCGEE)	Wellbore	VAN PORTFLIET 36N-3HZ AWB
Facility	SEC.10-T2N-R65W		

WELLPATH DATA (145 stations) † = interpolated/extrapolated station

MD [ft]	Inclination [°]	Azimuth [°]	TVD [ft]	Vert Sect [ft]	North [ft]	East [ft]	Latitude	Longitude	DLS [°/100ft]	Comments
7140.00	60.400	2.200	6864.70	331.21	47.13	1207.49	40°08'48.941"N	104°39'05.083"W	11.20	
7171.00	64.300	0.900	6879.08	358.05	74.57	1208.23	40°08'49.213"N	104°39'05.073"W	13.12	
7203.00	66.200	0.000	6892.48	386.34	103.63	1208.46	40°08'49.500"N	104°39'05.070"W	6.46	
7235.00	68.900	0.600	6904.70	415.11	133.20	1208.61	40°08'49.792"N	104°39'05.068"W	8.61	
7266.00	71.500	0.900	6915.20	443.54	162.36	1208.99	40°08'50.080"N	104°39'05.063"W	8.44	
7298.00	73.300	0.800	6924.87	473.28	192.86	1209.45	40°08'50.382"N	104°39'05.058"W	5.63	
7329.00	76.700	1.600	6932.89	502.51	222.79	1210.08	40°08'50.677"N	104°39'05.049"W	11.25	
7361.00	80.700	1.900	6939.16	533.20	254.15	1211.03	40°08'50.987"N	104°39'05.037"W	12.53	
7393.00	85.600	2.400	6942.98	564.33	285.89	1212.23	40°08'51.301"N	104°39'05.022"W	15.39	
7416.00	88.900	2.600	6944.08	586.86	308.84	1213.23	40°08'51.528"N	104°39'05.009"W	14.37	
7456.00†	89.684	2.641	6944.58	626.12	348.80	1215.06	40°08'51.923"N	104°39'04.985"W	1.96	7" Casing Point
7513.00	90.800	2.700	6944.34	682.07	405.73	1217.71	40°08'52.485"N	104°39'04.951"W	1.96	
7544.00	91.000	3.100	6943.85	712.52	436.69	1219.28	40°08'52.791"N	104°39'04.931"W	1.44	
7639.00	89.800	1.200	6943.19	805.59	531.61	1222.84	40°08'53.729"N	104°39'04.885"W	2.37	
7734.00	90.400	1.100	6943.02	898.33	626.59	1224.75	40°08'54.668"N	104°39'04.860"W	0.64	
7829.00	90.000	0.700	6942.69	990.98	721.58	1226.24	40°08'55.606"N	104°39'04.841"W	0.60	
7924.00	89.300	0.100	6943.27	1083.44	816.58	1226.91	40°08'56.545"N	104°39'04.832"W	0.97	
8019.00	89.800	359.500	6944.02	1175.67	911.57	1226.57	40°08'57.484"N	104°39'04.837"W	0.82	
8209.00	90.100	359.600	6944.18	1359.92	1101.57	1225.08	40°08'59.361"N	104°39'04.856"W	0.17	
8400.00	90.700	0.100	6942.85	1545.39	1292.56	1224.58	40°09'01.249"N	104°39'04.862"W	0.41	
8589.00	89.000	0.800	6943.34	1729.37	1481.54	1226.07	40°09'03.116"N	104°39'04.843"W	0.97	
8684.00	88.500	0.400	6945.41	1821.88	1576.52	1227.06	40°09'04.055"N	104°39'04.830"W	0.67	
8780.00	87.700	0.600	6948.60	1915.31	1672.46	1227.90	40°09'05.003"N	104°39'04.819"W	0.86	
8969.00	89.300	1.900	6953.54	2099.81	1861.34	1232.02	40°09'06.870"N	104°39'04.766"W	1.09	
9159.00	87.400	2.600	6959.02	2285.96	2051.10	1239.48	40°09'08.745"N	104°39'04.670"W	1.07	
9254.00	89.400	2.900	6961.67	2379.20	2145.95	1244.03	40°09'09.682"N	104°39'04.611"W	2.13	
9349.00	90.400	2.400	6961.83	2472.44	2240.85	1248.42	40°09'10.620"N	104°39'04.554"W	1.18	
9444.00	90.300	2.500	6961.25	2565.62	2335.76	1252.49	40°09'11.558"N	104°39'04.502"W	0.15	
9539.00	90.200	3.100	6960.84	2658.92	2430.65	1257.13	40°09'12.495"N	104°39'04.442"W	0.64	
9729.00	90.300	3.300	6960.01	2845.75	2620.35	1267.73	40°09'14.370"N	104°39'04.305"W	0.12	
9824.00	90.300	3.400	6959.51	2939.21	2715.18	1273.28	40°09'15.307"N	104°39'04.234"W	0.11	
10014.00	91.000	3.600	6957.36	3126.21	2904.82	1284.88	40°09'17.181"N	104°39'04.084"W	0.38	
10109.00	90.700	1.500	6955.95	3219.41	2999.71	1289.11	40°09'18.119"N	104°39'04.030"W	2.23	
10204.00	90.500	1.900	6954.95	3312.34	3094.66	1291.93	40°09'19.057"N	104°39'03.993"W	0.47	
10298.00	90.500	1.900	6954.13	3404.36	3188.60	1295.04	40°09'19.986"N	104°39'03.953"W	0.00	
10393.00	90.000	1.300	6953.72	3497.26	3283.56	1297.69	40°09'20.924"N	104°39'03.919"W	0.82	
10488.00	88.300	0.400	6955.13	3589.87	3378.54	1299.10	40°09'21.863"N	104°39'03.901"W	2.02	
10583.00	88.300	1.200	6957.95	3682.44	3473.49	1300.43	40°09'22.801"N	104°39'03.884"W	0.84	
10678.00	87.100	0.500	6961.76	3775.00	3568.40	1301.84	40°09'23.739"N	104°39'03.865"W	1.46	
10773.00	86.800	359.000	6966.81	3867.07	3663.26	1301.42	40°09'24.676"N	104°39'03.871"W	1.61	
10868.00	87.900	358.900	6971.21	3958.85	3758.14	1299.69	40°09'25.614"N	104°39'03.893"W	1.16	
10963.00	87.900	359.300	6974.69	4050.74	3853.06	1298.19	40°09'26.552"N	104°39'03.912"W	0.42	
11058.00	89.400	359.000	6976.92	4142.67	3948.03	1296.79	40°09'27.490"N	104°39'03.930"W	1.61	
11153.00	88.500	357.900	6978.67	4234.32	4042.97	1294.22	40°09'28.429"N	104°39'03.963"W	1.50	
11248.00	86.100	355.800	6983.14	4325.14	4137.71	1289.00	40°09'29.365"N	104°39'04.030"W	3.36	



Actual Wellpath Report

VAN PORTFLIET 36N-3HZ AWP

Page 5 of 7



REFERENCE WELLPATH IDENTIFICATION

Operator	KERR-MCGEE OIL & GAS ONSHORE LP	Slot	SLOT#05 VAN PORTFLIET 36N-3HZ (300'FSL & 1090'FWL, SEC.1
Area	COLORADO	Well	VAN PORTFLIET 36N-3HZ
Field	WELD COUNTY (KERR MCGEE)	Wellbore	VAN PORTFLIET 36N-3HZ AWB
Facility	SEC.10-T2N-R65W		

WELLPATH DATA (145 stations)

MD [ft]	Inclination [°]	Azimuth [°]	TVD [ft]	Vert Sect [ft]	North [ft]	East [ft]	Latitude	Longitude	DLS [°/100ft]	Comments
11342.00	86.200	353.600	6989.45	4413.83	4231.09	1280.34	40°09'30.288"N	104°39'04.142"W	2.34	
11437.00	88.500	354.200	6993.85	4503.13	4325.45	1270.26	40°09'31.220"N	104°39'04.272"W	2.50	
11532.00	88.500	354.900	6996.33	4592.85	4419.98	1261.24	40°09'32.154"N	104°39'04.388"W	0.74	
11627.00	88.500	355.700	6998.82	4682.98	4514.63	1253.46	40°09'33.090"N	104°39'04.488"W	0.84	
11722.00	89.800	355.400	7000.23	4773.26	4609.33	1246.09	40°09'34.025"N	104°39'04.583"W	1.40	
11817.00	89.300	356.900	7000.97	4863.84	4704.11	1239.71	40°09'34.962"N	104°39'04.665"W	1.66	
11912.00	89.900	357.700	7001.64	4954.99	4799.00	1235.23	40°09'35.900"N	104°39'04.723"W	1.05	
12007.00	89.500	357.400	7002.14	5046.25	4893.91	1231.17	40°09'36.838"N	104°39'04.775"W	0.53	
12093.00	89.800	357.900	7002.66	5128.91	4979.84	1227.65	40°09'37.687"N	104°39'04.820"W	0.68	Last BHI MWD+IFR Surveys
12151.00	89.800	357.900	7002.86	5184.72	5037.80	1225.52	40°09'38.260"N	104°39'04.847"W	0.00	Projection to Bit

HOLE & CASING SECTIONS - Ref Wellbore: VAN PORTFLIET 36N-3HZ AWB Ref Wellpath: VAN PORTFLIET 36N-3HZ AWP

String/Diameter	Start MD [ft]	End MD [ft]	Interval [ft]	Start TVD [ft]	End TVD [ft]	Start N/S [ft]	Start E/W [ft]	End N/S [ft]	End E/W [ft]
13.5in Open Hole	13.00	931.00	918.00	13.00	930.99	0.00	0.00	-1.07	-1.13
9.625in Casing Surface	13.00	931.00	918.00	13.00	930.99	0.00	0.00	-1.07	-1.13
8.75in Open Hole	931.00	7466.00	6535.00	930.99	6944.61	-1.07	-1.13	358.78	1215.52
7in Casing Intermediate	13.00	7456.00	7443.00	13.00	6944.58	0.00	0.00	348.80	1215.06
6.125in Open Hole	7456.00	12151.00	4695.00	6944.58	7002.86	348.80	1215.06	5037.80	1225.52



Actual Wellpath Report

VAN PORTFLIET 36N-3HZ AWP

Page 6 of 7



REFERENCE WELLPATH IDENTIFICATION

Operator	KERR-MCGEE OIL & GAS ONSHORE LP	Slot	SLOT#05 VAN PORTFLIET 36N-3HZ (300'FSL & 1090'FWL, SEC.1)
Area	COLORADO	Well	VAN PORTFLIET 36N-3HZ
Field	WELD COUNTY (KERR MCGEE)	Wellbore	VAN PORTFLIET 36N-3HZ AWB
Facility	SEC.10-T2N-R65W		

TARGETS

Name	MD [ft]	TVD [ft]	North [ft]	East [ft]	Grid East [US ft]	Grid North [US ft]	Latitude	Longitude	Shape
COOK 4 HZ PAD SECTION 10 LINES		-11.00	195.01	1846.25	3237856.49	1297658.38	40°08'50.402"N	104°38'56.857"W	polygon
COOK 4 HZ PAD SECTION 3 LINES		-11.00	195.01	1846.25	3237856.49	1297658.38	40°08'50.402"N	104°38'56.857"W	polygon
VAN PORTFLIET 36N-3HZ BHL (50'FSL & 2275'FWL, SEC.3) REV-2		6913.00	5038.49	1276.23	3237240.41	1302496.00	40°09'38.266"N	104°39'04.194"W	point
VAN PORTFLIET 36N-3HZ BHL ON PLAT (460'FSL & 2275'FWL, SEC.3) REV-1		6913.00	5448.49	1276.23	3237236.51	1302905.96	40°09'42.318"N	104°39'04.194"W	point
VAN PORTFLIET 36N-3HZ BHL (50'FSL & 2275'FWL, SEC.3) REV-3		6950.00	5038.49	1276.23	3237240.41	1302496.00	40°09'38.266"N	104°39'04.194"W	point
COOK 4 HZ PAD HARDLINES SEC. 10 (460' SETBACKS)		7089.00	195.01	1846.25	3237856.49	1297658.38	40°08'50.402"N	104°38'56.857"W	polygon
COOK 4 HZ PAD HARDLINES SEC. 3 (460' SETBACKS)		7089.00	195.01	1846.25	3237856.49	1297658.38	40°08'50.402"N	104°38'56.857"W	polygon

WELLPATH COMPOSITION - Ref Wellbore: VAN PORTFLIET 36N-3HZ AWB Ref Wellpath: VAN PORTFLIET 36N-3HZ AWP

Start MD [ft]	End MD [ft]	Positional Uncertainty Model	Log Name/Comment	Wellbore
13.00	888.00	Generic gyro - continuous (Standard)	GYRODATA SURVEYS <113-888>	VAN PORTFLIET 36N-
888.00	7416.00	NaviTrak (MAGCORR,IFR)	BHI MWD+IFR SURVEYS 8 3/4" HOLE <987-7416>	VAN PORTFLIET 36N-
7416.00	12093.00	OnTrak (MAGCORR,IFR)	BHI MWD+IFR SURVEYS 6 1/8" HOLE <7513-12093>	VAN PORTFLIET 36N-
12093.00	12151.00	Blind Drilling (std)	Projection to bit	VAN PORTFLIET 36N-



Actual Wellpath Report

VAN PORTFLIET 36N-3HZ AWP

Page 7 of 7



REFERENCE WELLPATH IDENTIFICATION

Operator	KERR-MCGEE OIL & GAS ONSHORE LP	Slot	SLOT#05 VAN PORTFLIET 36N-3HZ (300'FSL & 1090'FWL, SEC.1
Area	COLORADO	Well	VAN PORTFLIET 36N-3HZ
Field	WELD COUNTY (KERR MCGEE)	Wellbore	VAN PORTFLIET 36N-3HZ AWB
Facility	SEC.10-T2N-R65W		

WELLPATH COMMENTS

MD [ft]	Inclination [°]	Azimuth [°]	TVD [ft]	Comment
13.00	0.000	203.360	13.00	Tie-On
113.00	0.490	203.360	113.00	Begin GYRO Surveys
888.00	0.140	206.810	887.99	Tie-In to GYRO Surveys
987.00	0.100	331.400	986.99	Begin BHI MWD+IFR Surveys
7456.00	89.684	2.641	6944.58	7" Casing Point
12093.00	89.800	357.900	7002.66	Last BHI MWD+IFR Surveys
12151.00	89.800	357.900	7002.86	Projection to Bit