

The Road to Excellence Starts with Safety

| | | | | | | | |
|--|--|--------------------|--------------------------------------|---|--|--------------------------|--|
| Sold To #: 300721 | | Ship To #: 2966372 | | Quote #: | | Sales Order #: 900034496 | |
| Customer: WPX ENERGY ROCKY MOUNTAIN LLC-EBUS | | | | Customer Rep: Oaks, Rick | | | |
| Well Name: RWF | | | Well #: 13-36 | | | API/UWI #: 05-045-21480 | |
| Field: RULISON | | City (SAP): RIFLE | | County/Parish: Garfield | | State: Colorado | |
| Lat: N 39.482 deg. OR N 39 deg. 28 min. 56.287 secs. | | | | Long: W 107.837 deg. OR W -108 deg. 9 min. 47.862 secs. | | | |
| Contractor: NABORS 576 | | | Rig/Platform Name/Num: NABORS 576 | | | | |
| Job Purpose: Cement Surface Casing | | | | | | | |
| Well Type: Development Well | | | | Job Type: Cement Surface Casing | | | |
| Sales Person: MAYO, MARK | | | Srvc Supervisor: CASTILLO, FRANCISCO | | | MBU ID Emp #: 513620 | |

Job Personnel

| HES Emp Name | Exp Hrs | Emp # | HES Emp Name | Exp Hrs | Emp # | HES Emp Name | Exp Hrs | Emp # |
|--------------------------|---------|--------|-----------------------|---------|--------|--------------|---------|-------|
| BRENNECKE, ANDREW Bailey | 13 | 486345 | CASTILLO, FRANCISCO P | 13 | 513620 | | | |
| SMITH, CHRISTOPHER Scott | 13 | 452619 | WOLFE, JON P | 13 | 485217 | | | |

Equipment

| HES Unit # | Distance-1 way | HES Unit # | Distance-1 way | HES Unit # | Distance-1 way | HES Unit # | Distance-1 way |
|------------|----------------|------------|----------------|------------|----------------|------------|----------------|
| 10296152C | 60 mile | 10565341 | 60 mile | 10973571 | 60 mile | 11259884 | 60 mile |
| 11808849 | 60 mile | | | | | | |

Job Hours

| Date | On Location Hours | Operating Hours | Date | On Location Hours | Operating Hours | Date | On Location Hours | Operating Hours |
|----------|-------------------|-----------------|------|-------------------|-----------------|------|-------------------|-----------------|
| 12/29/12 | 13 | 1 | | | | | | |

TOTAL Total is the sum of each column separately

| Job | | | | | Job Times | | | |
|------------------------|----------------------|-----|-------------------|-----------|-----------|---------------|-----------------|-----------|
| Formation Name | Formation Depth (MD) | Top | SURFACE | Bottom | 1178 | Date | Time | Time Zone |
| Form Type | | | BHST | | | Called Out | 29 - Dec - 2012 | 02:00 |
| Job depth MD | 1178. ft | | Job Depth TVD | 11780. ft | | On Location | 29 - Dec - 2012 | 06:30 |
| Water Depth | | | Wk Ht Above Floor | 3. ft | | Job Started | 29 - Dec - 2012 | 18:02 |
| Perforation Depth (MD) | From | | To | | | Job Completed | 29 - Dec - 2012 | 19:06 |
| | | | | | | Departed Loc | 29 - Dec - 2012 | 20:00 |

Well Data

| Description | New / Used | Max pressure psig | Size in | ID in | Weight lbm/ft | Thread | Grade | Top MD ft | Bottom MD ft | Top TVD ft | Bottom TVD ft |
|-------------|------------|-------------------|---------|-------|---------------|--------|-------|-----------|--------------|------------|---------------|
|-------------|------------|-------------------|---------|-------|---------------|--------|-------|-----------|--------------|------------|---------------|

Sales/Rental/3rd Party (HES)

| Description | Qty | Qty uom | Depth | Supplier |
|--|-----|---------|-------|----------|
| PLUG,CMTG,TOP,9 5/8,HWE,8.16 MIN/9.06 MA | 1 | EA | | |

Tools and Accessories

| Type | Size | Qty | Make | Depth | Type | Size | Qty | Make | Depth | Type | Size | Qty | Make |
|--------------|-------|-----|------|---------|-------------|------|-----|------|-------|----------------|-------|-----|------|
| Guide Shoe | 9.625 | 1 | WTF | 1159.87 | Packer | | | | | Top Plug | 9.625 | 1 | HES |
| Float Shoe | | | | | Bridge Plug | | | | | Bottom Plug | | | |
| Float Collar | 9.625 | 1 | WTF | 1115.77 | Retainer | | | | | SSR plug set | | | |
| Insert Float | | | | | | | | | | Plug Container | 9.625 | 1 | HES |
| Stage Tool | | | | | | | | | | Centralizers | 9.625 | 9 | WTF |

Miscellaneous Materials

| Gelling Agt | Conc | Surfactant | Conc | Acid Type | Qty | Conc | % |
|---------------|------|------------|------|-----------|------|------|---|
| Treatment Fld | Conc | Inhibitor | Conc | Sand Type | Size | Qty | |

Fluid Data

| Stage/Plug #: 1 | | | | | | | | | |
|-----------------|------------|------------|-----|---------|------------------------|---------------------------|------------------|--------------|------------------------|
| Fluid # | Stage Type | Fluid Name | Qty | Qty uom | Mixing Density lbm/gal | Yield ft ³ /sk | Mix Fluid Gal/sk | Rate bbl/min | Total Mix Fluid Gal/sk |

HALLIBURTON***Cementing Job Summary***

| | | | | | | | | | |
|--|--------------|-------------------------------|-----------------|-----------------------------------|------|---------------------|-------|-----------------|-------|
| 1 | Water Spacer | | 20.00 | bbl | . | .0 | .0 | 4 | |
| 2 | Lead Cement | VERSACEM (TM) SYSTEM (452010) | 160.0 | sacks | 12.3 | 2.38 | 13.75 | 8 | 13.75 |
| | 13.75 Gal | FRESH WATER | | | | | | | |
| 3 | Tail Cement | VERSACEM (TM) SYSTEM (452010) | 160.0 | sacks | 12.8 | 2.11 | 11.75 | 8 | 11.75 |
| 4 | Displacement | | 88.00 | bbl | . | .0 | .0 | 10 | |
| Calculated Values | | Pressures | | Volumes | | | | | |
| Displacement | 88 | Shut In: Instant | | Lost Returns | NONE | Cement Slurry | 128 | Pad | |
| Top Of Cement | SURFACE | 5 Min | | Cement Returns | 33 | Actual Displacement | 88 | Treatment | |
| Frac Gradient | | 15 Min | | Spacers | 20 | Load and Breakdown | | Total Job | 236 |
| Rates | | | | | | | | | |
| Circulating | RIG | Mixing | 8 | Displacement | 10 | Avg. Job | 7.5 | | |
| Cement Left In Pipe | Amount | 44.10 ft | Reason | Shoe Joint | | | | | |
| Frac Ring # 1 @ | ID | | Frac ring # 2 @ | ID | | Frac Ring # 3 @ | ID | Frac Ring # 4 @ | ID |
| The Information Stated Herein Is Correct | | | | Customer Representative Signature | | | | | |

The Road to Excellence Starts with Safety

| | | | |
|--|--------------------|---|--------------------------|
| Sold To #: 300721 | Ship To #: 2966372 | Quote #: | Sales Order #: 900034496 |
| Customer: WPX ENERGY ROCKY MOUNTAIN LLC-EBUS | | Customer Rep: Oaks, Rick | |
| Well Name: RWF | Well #: 13-36 | API/UWI #: 05-045-21480 | |
| Field: RULISON | City (SAP): RIFLE | County/Parish: Garfield | State: Colorado |
| Legal Description: | | | |
| Lat: N 39.482 deg. OR N 39 deg. 28 min. 56.287 secs. | | Long: W 107.837 deg. OR W -108 deg. 9 min. 47.862 secs. | |
| Contractor: NABORS 576 | | Rig/Platform Name/Num: NABORS 576 | |
| Job Purpose: Cement Surface Casing | | | Ticket Amount: |
| Well Type: Development Well | | Job Type: Cement Surface Casing | |
| Sales Person: MAYO, MARK | | Srvc Supervisor: CASTILLO, FRANCISCO | MBU ID Emp #: 513620 |

| Activity Description | Date/Time | Cht # | Rate bbl/min | Volume bbl | | Pressure psig | | Comments |
|---------------------------------------|------------------|-------|--------------|------------|-------|---------------|--------|---|
| | | | | Stage | Total | Tubing | Casing | |
| Pre-Convoy Safety Meeting | 12/29/2012 04:35 | | | | | | | ALL HES PERSONEL |
| Crew Leave Yard | 12/29/2012 04:45 | | | | | | | |
| Arrive At Loc | 12/29/2012 06:30 | | | | | | | DRILLING RIG WAS STILL DRILLING/LEFT CEMENT TRUCKS ON A LOCATION BELOW TO KEEP OUT OF THE WAY TILL RIG FINISHED DRILLING/RIG TD AT 12:15 HRS/RIG LANDED CASING AT 16:45 HRS |
| Assessment Of Location Safety Meeting | 12/29/2012 15:50 | | | | | | | ALL HES PERSONEL |
| Rig-Up Equipment | 12/29/2012 16:00 | | | | | | | 1-ELITE, 1-660 BULK TRUCK, HIGH PRESSURE PUMPING IRON, PLUG CONTAINER AND QUICK CONNECT, 1-F-550 CEMENTER'S PICKUP |
| Rig-Up Completed | 12/29/2012 17:15 | | | | | | | |
| Pre-Job Safety Meeting | 12/29/2012 17:30 | | | | | | | ALL HES PERSONEL AND RIG CREW |
| Activity Description | Date/Time | Cht # | Rate bbl/min | Volume bbl | | Pressure psig | | Comments |
| | | | | Stage | Total | Tubing | Casing | |

| | | | | | | | | |
|---|---------------------|--|-----|------|--|--|-------|---|
| Start Job | 12/29/2012 18:02 | | | | | | | TD- 1178', TP- 1129.87', 30' LANDING JOINT, SJ- 44.10, CSG- 9.625 32.3# H-40, OH- 13.5, MUD- 9.8 PPG, FV-81, PV-28, YP-20, pH-8.5, TEMP-62, 7- CENTRALIZERS, 2- TURBOLIZERS |
| Other | 12/29/2012 18:03 | | 2 | 2 | | | 75.0 | FILL LINES |
| Other | 12/29/2012 18:05 | | 0.2 | 0.2 | | | | STALL OUT/PRESSURE HELD AT 2509 PSI |
| Pressure Test | 12/29/2012 18:07 | | 0.2 | 0.2 | | | | ALL LINES HELD PRESSURE AT 3870 PSI |
| Pump Spacer 1 | 12/29/2012 18:11 | | 4 | 20 | | | 102.0 | FRESH WATER |
| Pump Lead Cement | 12/29/2012 18:21 | | 8 | 68 | | | 377.0 | 160 SKS, 12.3 PPG, 2.38 FT3/SK, 13.75 GAL/SK, SETUP TIME 2:38 HRS AT 70 BC |
| Pump Tail Cement | 12/29/2012 18:33 | | 8 | 60 | | | 410.0 | 160 SKS, 12.8 PPG, 2.11 FT3/ SK, 11.75 GAL/SK, SETUP TIME 1:51 HRS AT 70 BC |
| Shutdown | 12/29/2012 18:40 | | | | | | | |
| Drop Top Plug | 12/29/2012 18:43 | | | | | | | PLUG DROP VERIFIED BY CUSTOMER |
| Pump Displacement | 12/29/2012 18:44 | | 10 | 77.8 | | | 650.0 | FRESH WATER, GOT RETURNS 55 BBLS INTO DISPLACEMENT, GOT 33 BBLS/78 SKS OF CEMENT TO SURFACE |
| Slow Rate | 12/29/2012 18:57 | | 2 | 10 | | | 257.0 | |
| Bump Plug | 12/29/2012 19:02 | | | 88 | | | 802.0 | |
| Check Floats | 12/29/2012 19:05 | | | | | | | FLOATS HELD |
| End Job | 12/29/2012 19:06 | | | | | | | |
| Post-Job Safety Meeting (Pre Rig-Down) | 12/29/2012 19:10 | | | | | | | ALL HES PERSONEL |
| Depart Location for Service Center or Other Site | 12/29/2012 20:00 | | | | | | | |
| Other | 12/29/2012 20:01 | | | | | | | THANK YOU FOR CHOOSING HALLIBURTON, JAVIER CASTILLO AND CREW |

Sold To # : 300721

Ship To # :2966372

Quote # :

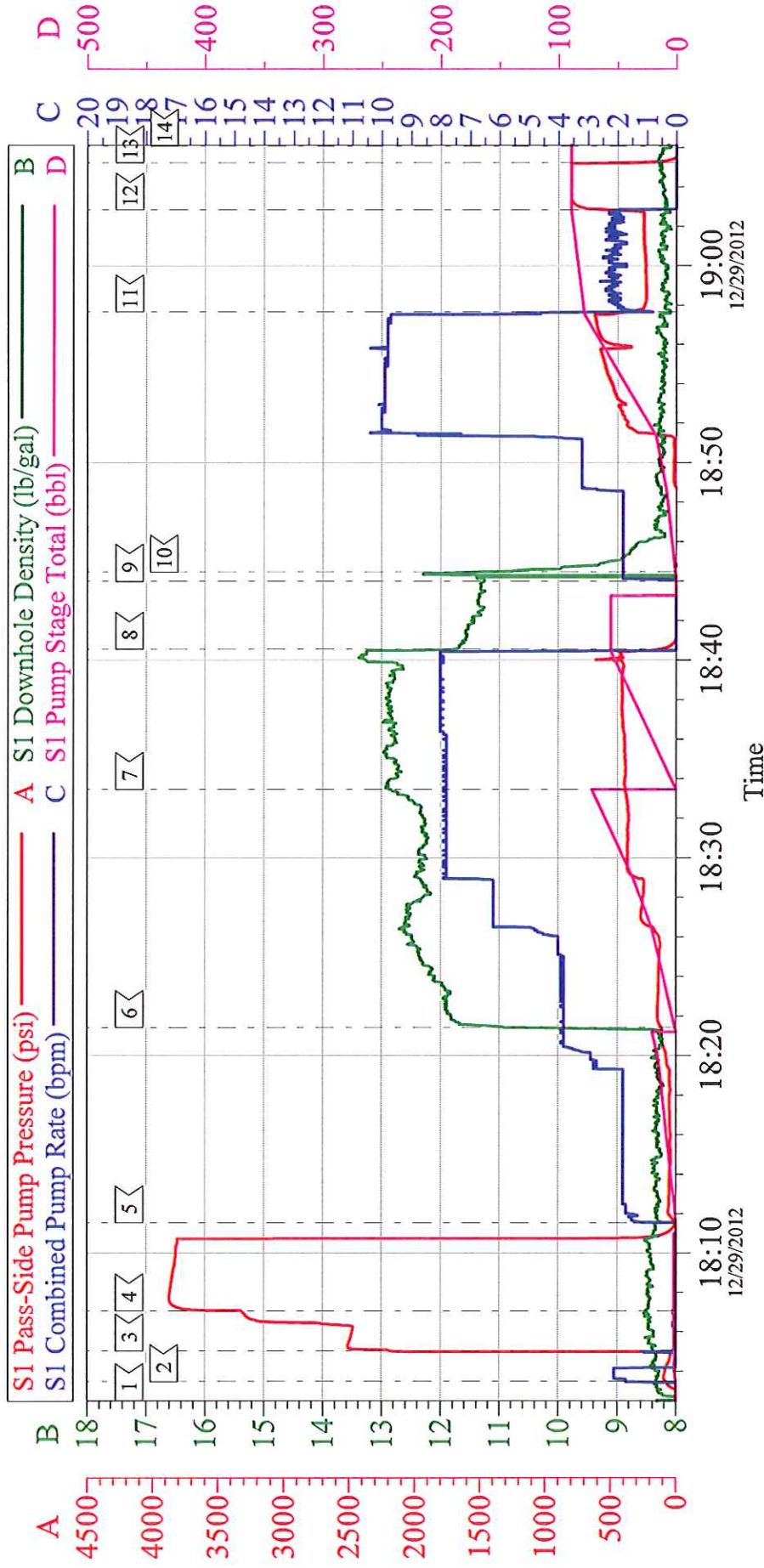
Sales Order # : 900034496

SUMMIT Version: 7.3.0045

Monday, January 14, 2013 04:01:00

WPX RWF 13-36

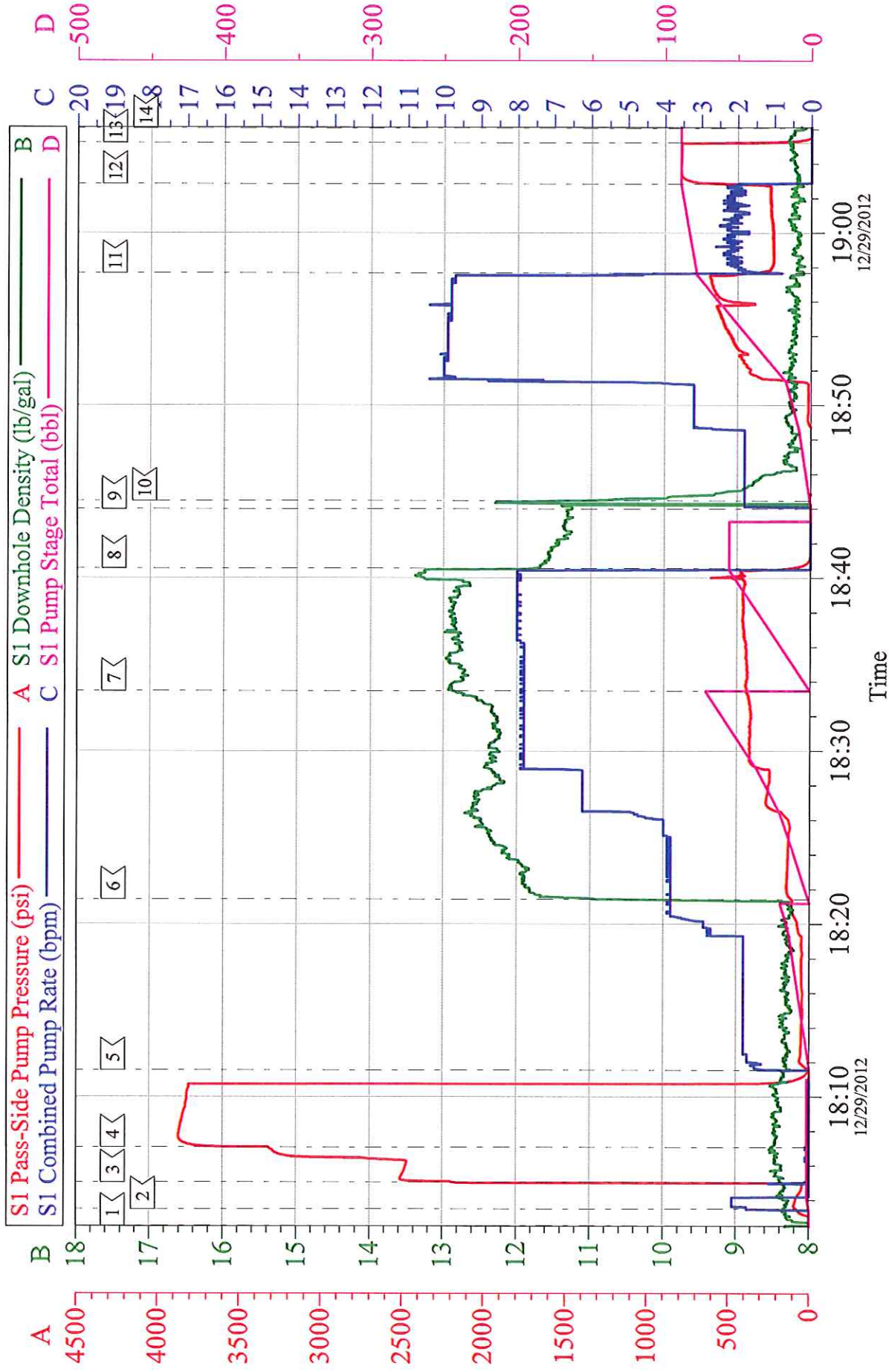
SURFACE



| | | | | | |
|-------------------|-------------------------------------|--------------------|-----------------|----------------|-------------------|
| Customer: | WILLIAMS PRODUCTION RMT INC EBUSINE | Job Date: | 29-Dec-2012 | Sales Order #: | 900034496 |
| Well Description: | RWF 13-36 | Job Type: | SURFACE | ADC Used: | YES |
| Company Rep: | RICK OAKS | Cement Supervisor: | JAVIER CASTILLO | lite #9: | ANDREW BRENNNECKE |

WPX RWF 13-36

SURFACE



| | | | | | |
|-------------------|-------------------------------------|--------------------|-----------------|----------------|----------------|
| Customer: | WILLIAMS PRODUCTION RMT INC EBUSINE | Job Date: | 29-Dec-2012 | Sales Order #: | 900034496 |
| Well Description: | RWF 13-36 | Job Type: | SURFACE | ADC Used: | YES |
| Company Rep: | RICK OAKS | Cement Supervisor: | JAVIER CASTILLO | lite #9: | ANDREW BRENNKE |

OptiCem v6.4.10
29-Dec-12 19:19