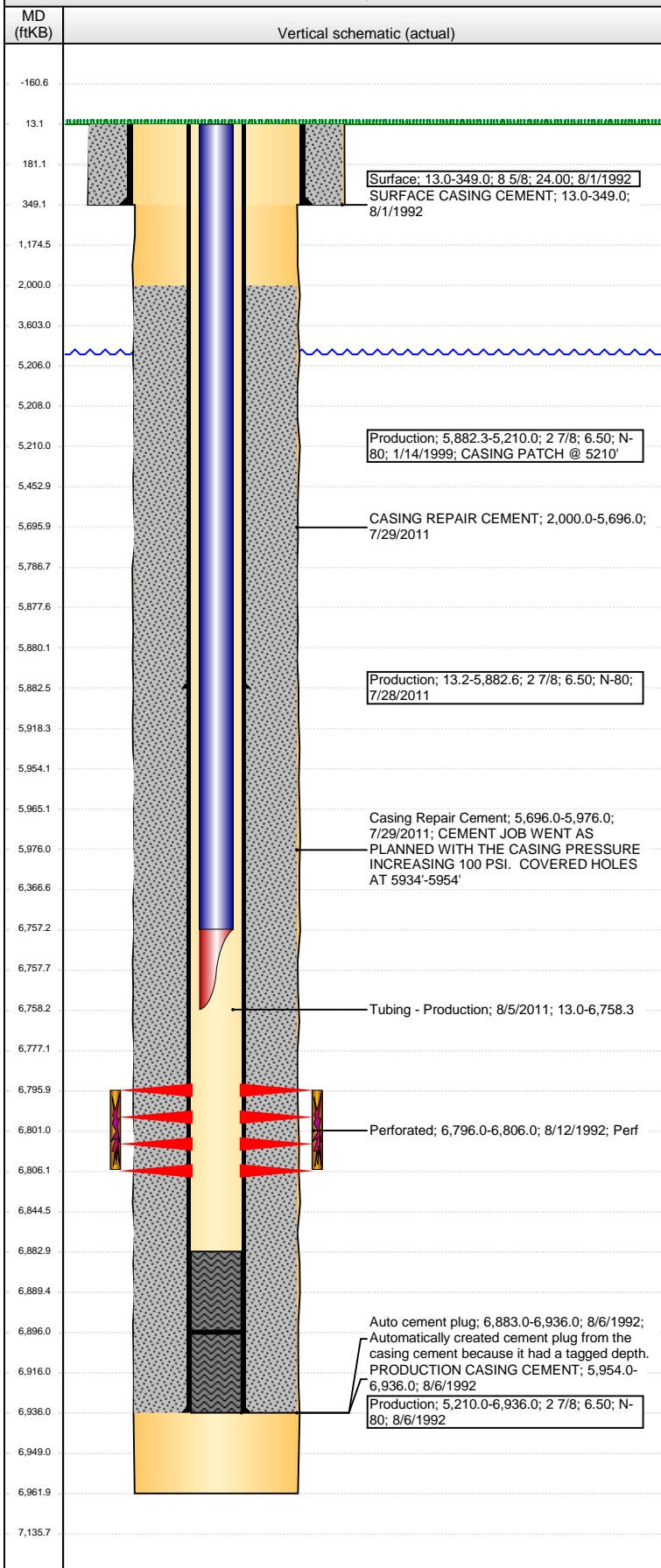


Well Name: SPIKE STATE C24-13

VERTICAL - ORIGINAL HOLE, 5/7/2013 9:54:44 AM



Well Header

API	Business Unit	District	Well Config
05-123-15813	WATTENBERG	15	VERTICAL
Original KB Elevation (ft)	KB - GL / MSL (ftKB)	Spud Date	P & A Date
4,713.00	13.00	7/31/1992	

Comment

CASING PATCH AT 5210'

Directions To Well

WCR 61 & WCR 46, S. 1.1, W & SW 5/10 TO WINDMILL, GO 2/10 PAST WINDMILL TO TB, THEN NW 1/10, THEN W AND S 1/10 INTO

Congressional Location

Quarter 1	Quarter 2	Quarter 3	Quarter 4	Section	Township	Twnshp N...	Range	Rng E/W Dir
		SW	SW	24	4	N	64	W

Bottom Hole Location

North-South Distance (ft)	From N or S Line	East-West Distance (ft)	From E or W Line

Plug Back Total Depths

Date	Depth (ftKB)	Method	Com
8/4/1992	6,883.0	CASING TALLY	LATCH DOWN COLLAR
8/12/1992	6,883.0	CASED HOLE LOG	DEPTH LOGGER
8/4/2011	6,896.0	TAG	CLEAN OUT AFTER PATCH

Wellbore Sections

Section Des	Size (in)	Act Top (ftKB)	Act Btm (ftKB)
SURFACE	12 1/4	13.0	349.0
PRODUCTION	7 7/8	349.0	6,962.0

Zone Statuses

Zone Name	Status Date	Status	Job
CODELL	10/9/1992	PR	DRILLING/COMPLETION - ORIGINAL, 7/31/1992 00:00
CODELL	8/11/2011	PR	CASING REPAIR, 7/19/2011 06:00

Casing Strings

Surface, 349.0ftKB

Casing Description	Run Date	OD (in)	Wt/Len (l...)	Grade	Top (ftKB)	MD (ftKB)
Surface	8/1/1992	8 5/8	24.00		13.0	349.0

Production, 5,210.0ftKB

Casing Description	Run Date	OD (in)	Wt/Len (l...)	Grade	Top (ftKB)	MD (ftKB)
Production	1/14/1999	2 7/8	6.50	N-80	13.0	5,210.0

Production, 5,882.6ftKB

Casing Description	Run Date	OD (in)	Wt/Len (l...)	Grade	Top (ftKB)	MD (ftKB)
Production	7/28/2011	2 7/8	6.50	N-80	13.2	5,882.6

Production, 6,936.0ftKB

Casing Description	Run Date	OD (in)	Wt/Len (l...)	Grade	Top (ftKB)	MD (ftKB)
Production	8/6/1992	2 7/8	6.50	N-80	13.0	6,936.0

Cement

Description	Top Depth (ftKB)	Bottom Depth (ftKB)
SURFACE CASING CEMENT	13.0	349.0
PRODUCTION CASING CEMENT	5,954.0	6,936.0
CASING REPAIR CEMENT	2,000.0	5,696.0
Casing Repair Cement	5,696.0	5,976.0

Tubing Components

Item Des	OD (in)	Wt (lb/ft)	Grade	Jts	Len (ft)	Btm (ftKB)	Btm (TVD) (ftKB)
Tubing	1.66	2.33	J-55	205	6,744.12	6,757.1	
MULED SHOE	1.66	0.00	X	1	1.20	6,758.3	
SEATING NIPPLE							

Perforation Data

Zone	Bnch/St g	Entered Shot Total	Top (ftKB)	Btm (ftKB)	Date
CODELL, ORIGINAL HOLE		40	6,796.00	6,806.00	8/12/1992

Stimulations & Treatments

Date	Zone	Primary Job Type
9/24/1992	CODELL, ORIGINAL HOLE	DRILLING/COMPLETION - ORIGINAL
Technical Result	Tech Result Details	Tech Result Note
Comment		

Well Name: SPIKE STATE C24-13

VERTICAL - ORIGINAL HOLE, 5/7/2013 9:54:44 AM

Other In Hole

Run Date	Des	OD (in)	Top (ftKB)	Btm (ftKB)

Logs

Date	Type	Top (ftKB)	Btm (ftKB)
8/5/1992	Compensated Density	4,000.0	6,960.0
8/12/1992	CBL/CCL/GR	5,850.0	6,878.0
12/9/1992	Temperature Survey	4.0	6,630.0
12/10/1992	Temperature Survey	4.0	6,854.0
3/15/1994	Temperature Survey	800.0	6,620.0
7/22/2011	GYRO	13.0	5,921.0
7/26/2011	CBL/CCL/GR	5,007.0	5,859.0
8/1/2011	GYRO	5,500.0	6,600.0

