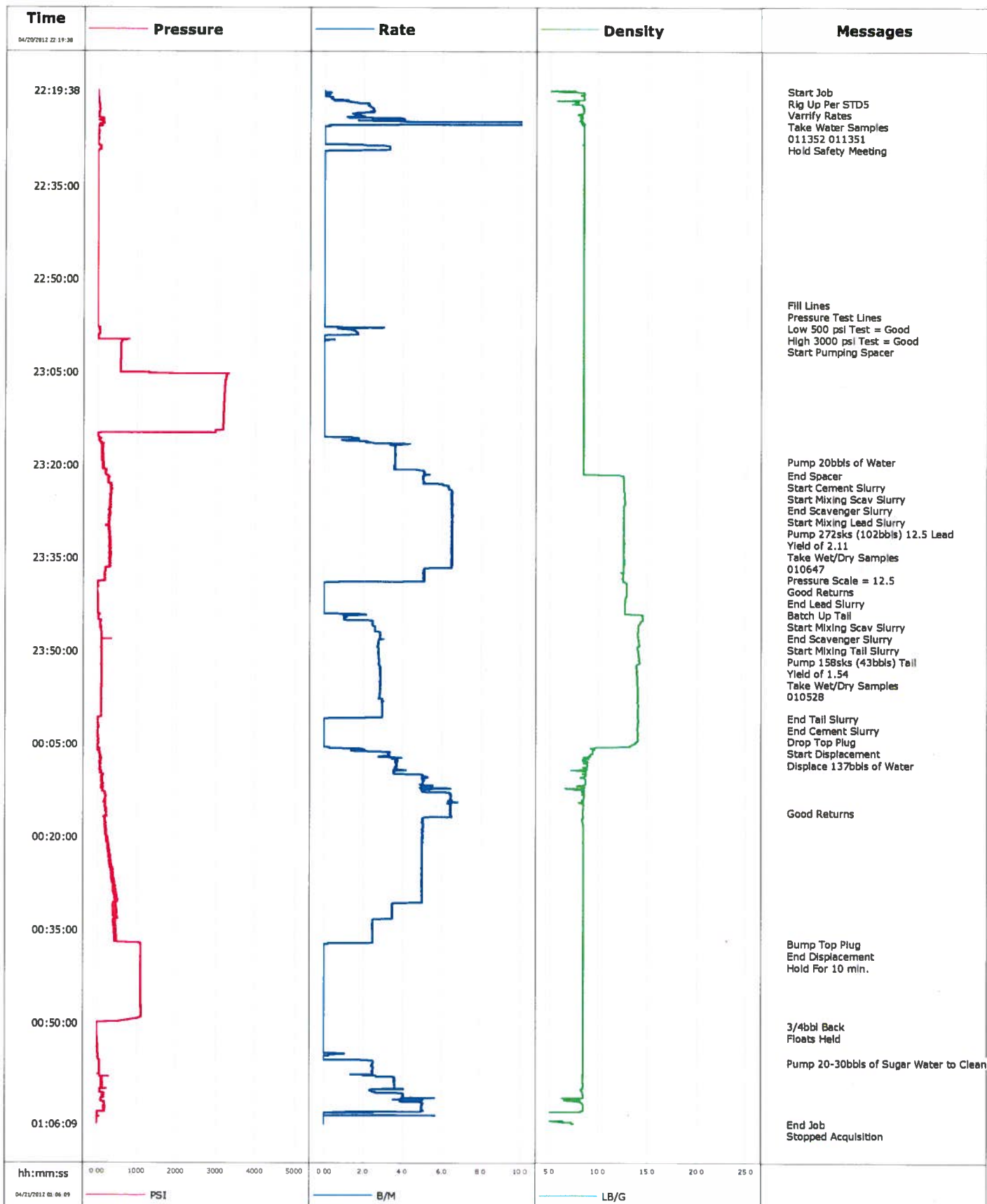




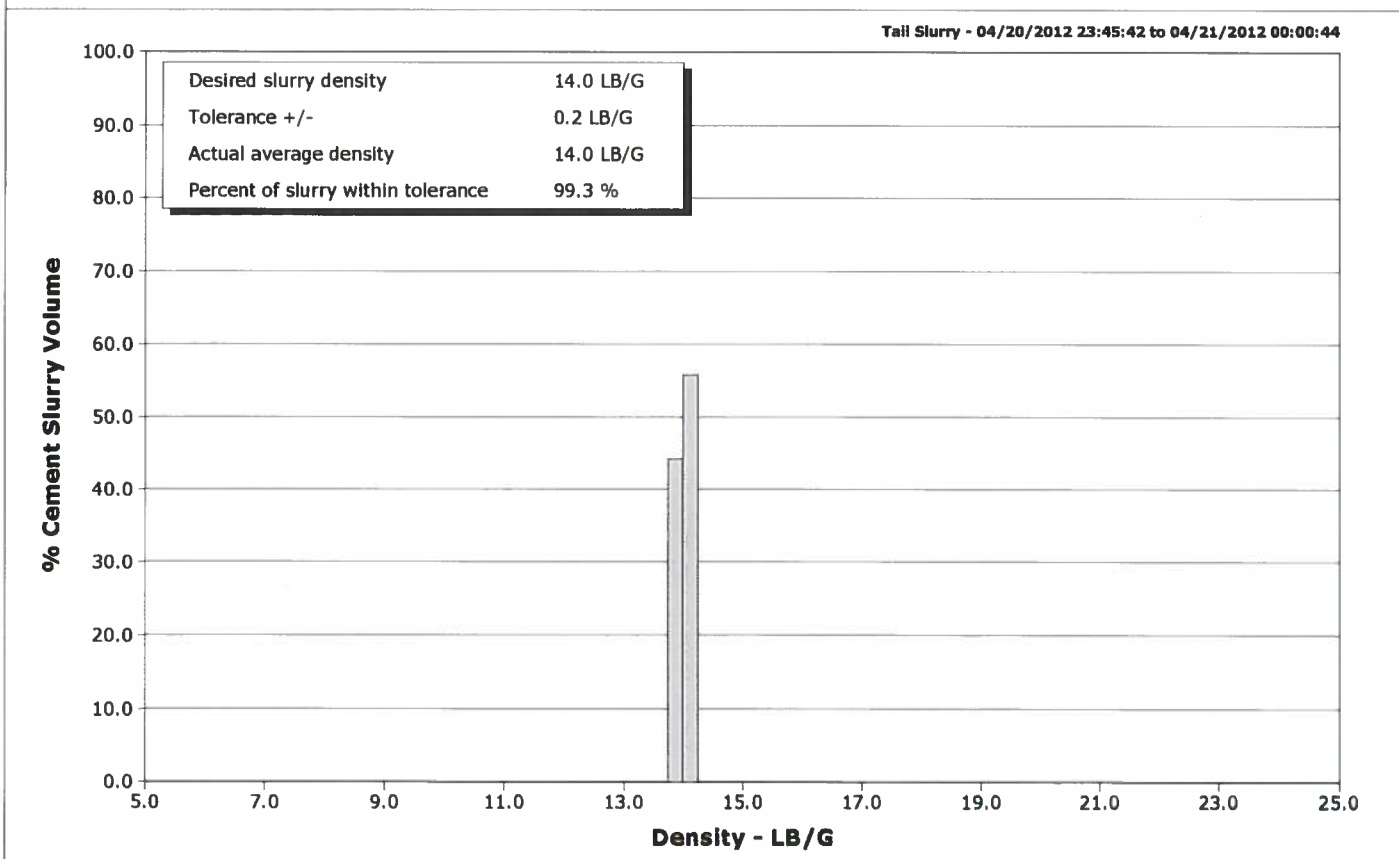
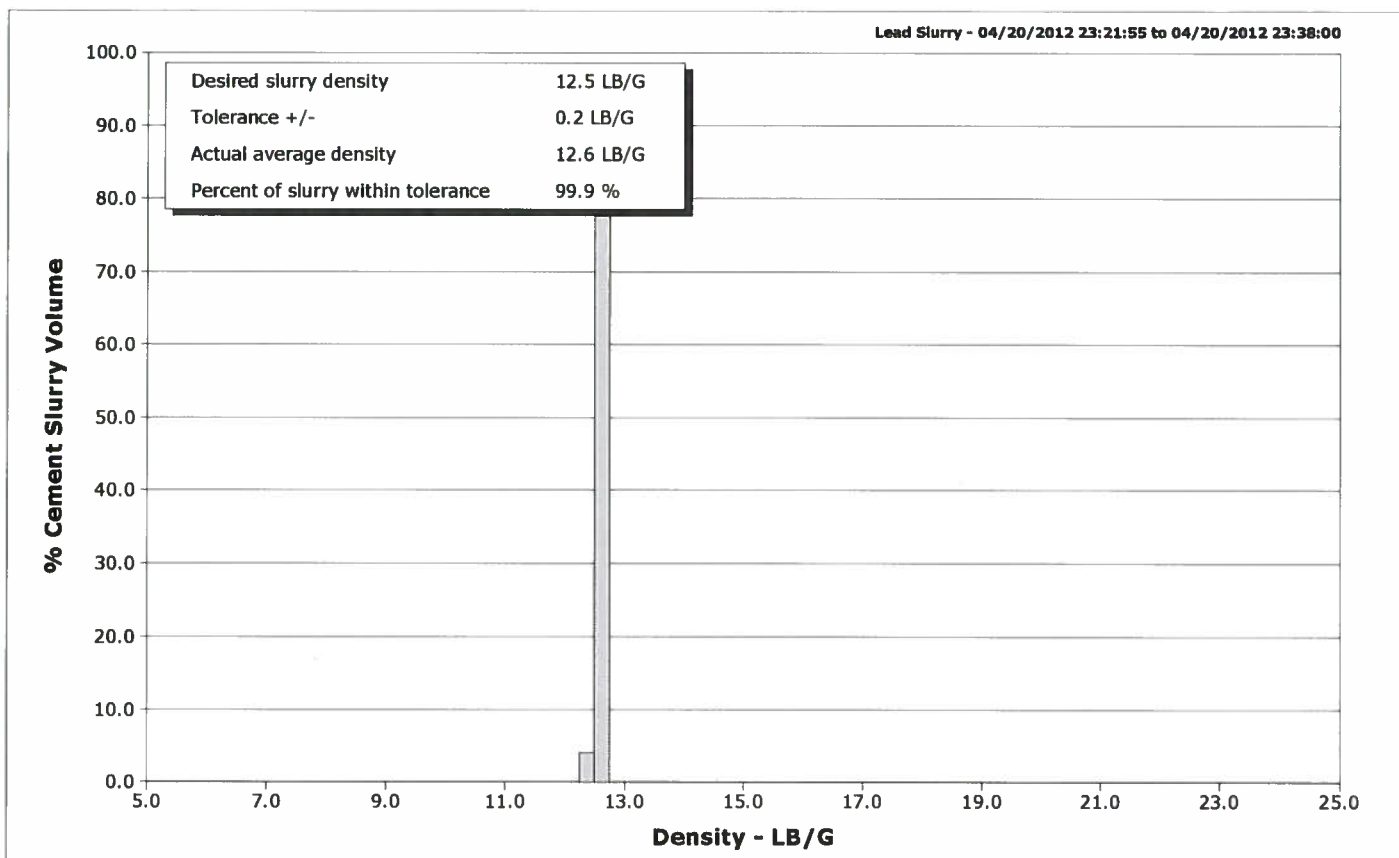
02617847

<b>Well</b>	EF14A-27 P	<b>Client</b>	ENCANA
<b>Field</b>	NORTH PARACHUTE	<b>SIR No.</b>	
<b>Engineer</b>	DANT RYAN	<b>Job Type</b>	9 5/8 SURFACE
<b>Country</b>	United States	<b>Job Date</b>	04-20-2012



# Schlumberger Cementing Qa/Qc Density Report

<b>Well</b>	EF14A-27 P	<b>Client</b>	ENCANA
<b>Field</b>	NORTH PARACHUTE	<b>SIR No.</b>	
<b>Engineer</b>	DANT RYAN	<b>Job Type</b>	9 5/8 SURFACE
<b>Country</b>	United States	<b>Job Date</b>	04-20-2012



## Cementing Service Report

[illegible]

Well EF14A-27 P EF14A-27 P			Field NORTH PARACHUTE	Job Start Apr/20/2012	Customer ENCANA	Job Number 759616
Date	Time 24-hr clock	Treating Pressure PSI	Flow Rate B/M	Density LB/G	Volume BBL	Message
04/20/2012	22:40:46	-4	0.0	8.46	0.0	
04/20/2012	22:42:26	-4	0.0	8.46	0.0	
04/20/2012	22:44:06	-4	0.0	8.46	0.0	
04/20/2012	22:45:46	-4	0.0	8.46	0.0	
04/20/2012	22:47:26	-5	0.0	8.46	0.0	
04/20/2012	22:49:06	-4	0.0	8.46	0.0	
04/20/2012	22:50:46	-5	0.0	8.46	0.0	
04/20/2012	22:52:26	-5	0.0	8.46	0.0	
04/20/2012	22:54:06	-5	0.0	8.46	0.0	
04/20/2012	22:54:07					Fill Lines
04/20/2012	22:54:07	-5	0.0	8.46	0.0	
04/20/2012	22:54:10					Pressure Test Lines
04/20/2012	22:54:10	-5	0.0	8.46	0.0	
04/20/2012	22:54:11					Low 500 psi Test = Good
04/20/2012	22:54:11	-5	0.0	8.46	0.0	
04/20/2012	22:54:12					High 3000 psi Test = Good
04/20/2012	22:54:12	-5	0.0	8.46	0.0	
04/20/2012	22:54:14					Start Pumping Spacer
04/20/2012	22:54:14	-5	0.0	8.46	0.0	
04/20/2012	22:55:46	-8	0.0	8.46	0.0	
04/20/2012	22:57:26	-9	0.0	8.46	0.0	
04/20/2012	22:59:06	25	0.2	8.46	2.0	
04/20/2012	23:00:46	595	0.0	8.46	2.1	
04/20/2012	23:02:26	584	0.0	8.46	2.1	
04/20/2012	23:04:06	572	0.0	8.46	2.1	
04/20/2012	23:05:46	3260	0.0	8.46	2.1	
04/20/2012	23:07:26	3233	0.0	8.46	2.1	
04/20/2012	23:09:06	3218	0.0	8.46	2.1	
04/20/2012	23:10:46	3204	0.0	8.46	2.1	
04/20/2012	23:12:26	3192	0.0	8.46	2.1	
04/20/2012	23:14:06	3182	0.0	8.46	2.1	
04/20/2012	23:15:46	83	1.7	8.46	2.4	
04/20/2012	23:17:26	106	3.6	8.46	7.1	
04/20/2012	23:19:06	109	3.6	8.46	13.1	
04/20/2012	23:19:28					Pump 20bbls of Water
04/20/2012	23:19:28	131	3.6	8.46	14.4	
04/20/2012	23:20:46	201	4.1	8.46	19.1	
04/20/2012	23:21:33					End Spacer
04/20/2012	23:21:33	209	5.4	8.57	23.0	
04/20/2012	23:21:35					Start Cement Slurry
04/20/2012	23:21:35	216	5.3	9.31	23.2	
04/20/2012	23:21:36					Start Mixing Scav Slurry
04/20/2012	23:21:36	216	5.3	10.29	23.2	
04/20/2012	23:21:54					End Scavenger Slurry
04/20/2012	23:21:54	290	5.0	12.50	24.8	
04/20/2012	23:21:55					Start Mixing Lead Slurry
04/20/2012	23:21:55	274	5.1	12.50	24.9	
04/20/2012	23:21:57					Pump 272sks (102bbls) 12.5 Lead
04/20/2012	23:21:57	294	5.0	12.50	25.0	
04/20/2012	23:21:58					Yield of 2.11
04/20/2012	23:21:58					Take Wet/Dry Samples
04/20/2012	23:21:58	277	5.0	12.50	25.1	
04/20/2012	23:22:26	274	5.0	12.52	27.5	
04/20/2012	23:24:06	351	6.5	12.59	37.2	

Well			Field	Job Start		Customer	Job Number
EF14A-27 P EF14A-27 P			NORTH PARACHUTE	Apr/20/2012		ENCANA	759616
Date	Time 24-hr clock	Treating Pressure PSI	Flow Rate B/M	Density LB/G	Volume BSL	Message	
04/20/2012	23:24:28	337	6.5	12.60	39.6		
04/20/2012	23:24:29					Pressure Scale = 12.5	
04/20/2012	23:24:29	356	6.5	12.61	39.7		
04/20/2012	23:25:46	320	6.5	12.65	48.0		
04/20/2012	23:27:26	311	6.5	12.58	58.8		
04/20/2012	23:29:06	282	6.5	12.56	69.7		
04/20/2012	23:30:40					Good Returns	
04/20/2012	23:30:40	292	6.5	12.54	79.8		
04/20/2012	23:30:46	297	6.5	12.54	80.5		
04/20/2012	23:32:26	333	6.5	12.58	91.3		
04/20/2012	23:34:06	316	6.5	12.58	102.1		
04/20/2012	23:35:46	315	6.5	12.63	112.9		
04/20/2012	23:37:26	187	5.1	12.43	122.5		
04/20/2012	23:38:00					End Lead Slurry	
04/20/2012	23:38:00	176	5.1	12.49	125.4		
04/20/2012	23:39:06	-1	0.0	12.85	129.5		
04/20/2012	23:39:07					Batch Up Tail	
04/20/2012	23:39:07	2	0.0	12.86	129.5		
04/20/2012	23:39:22					Start Mixing Scav Slurry	
04/20/2012	23:39:22	14	0.0	12.88	129.5		
04/20/2012	23:40:46	12	0.0	12.89	129.5		
04/20/2012	23:42:26	17	0.0	12.69	129.5		
04/20/2012	23:44:06	64	2.1	14.11	129.7		
04/20/2012	23:45:40					End Scavenger Slurry	
04/20/2012	23:45:40	85	2.5	14.16	132.4		
04/20/2012	23:45:42					Start Mixing Tail Slurry	
04/20/2012	23:45:42	84	2.5	14.15	132.4		
04/20/2012	23:45:46	83	2.5	14.12	132.6		
04/20/2012	23:45:49					Pump 158sks (43bbbls) Tail	
04/20/2012	23:45:49	82	2.5	14.07	132.7		
04/20/2012	23:45:50					Yield of 1.54	
04/20/2012	23:45:50					Take Wet/Dry Samples	
04/20/2012	23:45:50					010528	
04/20/2012	23:45:50	82	2.5	14.06	132.8		
04/20/2012	23:47:26	106	2.9	14.02	137.0		
04/20/2012	23:49:06	103	2.8	14.17	141.7		
04/20/2012	23:50:46	102	2.8	14.11	146.3		
04/20/2012	23:52:26	105	2.9	13.84	151.0		
04/20/2012	23:54:06	106	2.9	13.95	155.8		
04/20/2012	23:55:46	102	2.9	13.97	160.6		
04/20/2012	23:57:26	97	2.8	13.98	165.3		
04/20/2012	23:59:06	90	3.0	14.03	170.2		
04/21/2012	00:00:44					End Tail Slurry	
04/21/2012	00:00:44	83	2.9	14.00	175.0		
04/21/2012	00:00:46					End Cement Slurry	
04/21/2012	00:00:46	29	2.1	14.00	175.1		
04/21/2012	00:00:48					Drop Top Plug	
04/21/2012	00:00:48	26	0.8	14.01	175.2		
04/21/2012	00:00:49					Start Displacement	
04/21/2012	00:00:49	24	0.8	14.01	175.2		
04/21/2012	00:00:52					Displace 137bbbls of Water	
04/21/2012	00:00:52	22	0.2	14.02	175.2		
04/21/2012	00:02:26	21	0.0	13.97	175.2		
04/21/2012	00:04:06	18	0.0	13.99	175.2		

Well EF14A-27 P EF14A-27 P			Field NORTH PARACHUTE		Job Start Apr/20/2012		Customer ENCANA		Job Number 759616	
Date	Time 24-hr clock	Treating Pressure PSI		Flow Rate B/M	Density LB/G	Volume BSL	Message			
04/21/2012	00:07:26	108		3.5	8.77	180.2				
04/21/2012	00:09:06	77		3.6	8.80	186.3				
04/21/2012	00:10:46	124		5.1	8.65	193.6				
04/21/2012	00:12:26	146		5.0	8.56	202.2				
04/21/2012	00:14:06	195		6.4	8.44	212.5				
04/21/2012	00:15:46	231		6.4	8.42	223.2				
04/21/2012	00:15:56						Good Returns			
04/21/2012	00:15:56	218		6.4	8.40	224.2				
04/21/2012	00:17:26	197		5.0	8.34	232.9				
04/21/2012	00:19:06	217		5.0	8.45	241.3				
04/21/2012	00:20:46	249		5.0	8.43	249.7				
04/21/2012	00:22:26	282		5.0	8.46	258.0				
04/21/2012	00:24:06	350		5.0	8.46	266.3				
04/21/2012	00:25:46	387		5.0	8.46	274.6				
04/21/2012	00:27:26	436		5.0	8.46	282.9				
04/21/2012	00:29:06	499		5.0	8.46	291.2				
04/21/2012	00:30:46	451		3.5	8.46	299.3				
04/21/2012	00:32:26	497		3.5	8.46	305.1				
04/21/2012	00:34:06	474		2.5	8.46	310.0				
04/21/2012	00:35:46	461		2.5	8.45	314.1				
04/21/2012	00:37:12						Bump Top Plug			
04/21/2012	00:37:12	1108		0.2	8.46	317.6				
04/21/2012	00:37:13						End Displacement			
04/21/2012	00:37:13	1108		0.2	8.46	317.6				
04/21/2012	00:37:23						Hold For 10 min.			
04/21/2012	00:37:23	1107		0.0	8.46	317.6				
04/21/2012	00:37:26	1107		0.0	8.46	317.6				
04/21/2012	00:39:06	1106		0.0	8.46	317.6				
04/21/2012	00:40:46	1108		0.0	8.46	317.6				
04/21/2012	00:42:26	1110		0.0	8.46	317.6				
04/21/2012	00:44:06	1111		0.0	8.46	317.6				
04/21/2012	00:45:46	1113		0.0	8.46	317.6				
04/21/2012	00:47:26	1115		0.0	8.46	317.6				
04/21/2012	00:49:06	1115		0.0	8.46	317.6				
04/21/2012	00:50:19						3/4bbl Back			
04/21/2012	00:50:19	-6		0.0	8.46	317.6				
04/21/2012	00:50:20						Floats Held			
04/21/2012	00:50:20	-6		0.0	8.46	317.6				
04/21/2012	00:50:46	-5		0.0	8.46	317.6				
04/21/2012	00:52:26	12		0.0	8.46	317.6				
04/21/2012	00:54:06	13		0.0	8.46	317.6				
04/21/2012	00:55:46	29		0.0	8.47	317.8				
04/21/2012	00:56:11						Pump 20-30bbls of Sugar Water to Clean Rig Lines			
04/21/2012	00:56:11	66		2.5	8.47	318.4				
04/21/2012	00:57:26	70		2.5	8.47	321.6				
04/21/2012	00:59:06	133		3.6	8.42	326.1				
04/21/2012	01:00:46	76		2.4	8.28	332.0				
04/21/2012	01:02:26	93		4.1	7.07	338.1				
04/21/2012	01:04:06	201		5.0	8.45	346.2				
04/21/2012	01:05:46	5		0.0	5.26	347.6				
04/21/2012	01:06:07						End Job			
04/21/2012	01:06:07	-7		0.0	7.34	347.6				

Well EF14A-27 P EF14A-27 P	Field NORTH PARACHUTE	Job Start Apr/20/2012	Customer ENCANA	Job Number 759616
-------------------------------	--------------------------	--------------------------	--------------------	----------------------

### Post Job Summary

Average Pump Rates, bbl/min					Volume of Fluid Injected, bbl			
Slurry 4.1	N2	Mud 0.0	Maximum Rate 17.1	Total Slurry 364.8	Mud 0.0	Spacer 40.3	N2	
Treating Pressure Summary, psi					Breakdown Fluid			
Maximum 3331	Final -7	Average 496	Bump Plug to 900	Breakdown	Type	Volume	Density	
Avg. N2 Percent	Designed Slurry Volume 146.0 bbl		Displacement 142.4 bbl	Mix Water Temp 60 degF	Cement Circulated to Surface? <input checked="" type="checkbox"/>	Volume 20.0 bbl		
					Washed Thru Perfs <input type="checkbox"/>	To		
Customer or Authorized Representative CODY HESEBY			Schlumberger Supervisor DANT RYAN			Circulation Lost <input type="checkbox"/>	Job Completed <input checked="" type="checkbox"/>	
						-	-	