

KERR-MCGEE OIL & GAS ONSHORE LP

Location: COLORADO Slot: SLOT#22 JELTS 37C-19HZ (275'FNL & 968'FEL, SEC.19)
 Field: WELD COUNTY (KERR MCGEE) Well: JELTS 37C-19HZ
 Facility: SEC.19-T1N-R67W Wellbore: JELTS 37C-19HZ PWB

Plot reference wellpath is JELTS 37C-19HZ (PERMIT REV-1) PWP

True vertical depths are referenced to XTREME 24 (RKB)	Grid System: NAD83 / Lambert Colorado SP, Northern Zone (501), US feet
Measured depths are referenced to XTREME 24 (RKB)	North Reference: True north
XTREME 24 (RKB) to Mean Sea Level: 5174 feet	Scale: True distance
Mean Sea Level to Mud line (At Slot: SLOT#22 JELTS 37C-19HZ (275'FNL & 968'FEL, SEC.19)): 0 feet	Depths are in feet
Coordinates are in feet referenced to Slot	Created by: wilsjef02 on 5/3/2013

Location Information

Facility Name	Grid East (US ft)	Grid North (US ft)	Latitude	Longitude		
SEC.19-T1N-R67W	3157293.749	1259018.130	40°02'34.891"N	104°56'17.471"W		
Slot	Local N (ft)	Local E (ft)	Grid East (US ft)	Grid North (US ft)	Latitude	Longitude
SLOT#22 JELTS 37C-19HZ (275'FNL & 968'FEL, SEC.19)	26.69	2972.77	3160266.172	1259063.652	40°02'35.153"N	104°55'39.248"W
XTREME 24 (RKB) to Mud line (At Slot: SLOT#22 JELTS 37C-19HZ (275'FNL & 968'FEL, SEC.19))						5174ft
Mean Sea Level to Mud line (At Slot: SLOT#22 JELTS 37C-19HZ (275'FNL & 968'FEL, SEC.19))						0ft
XTREME 24 (RKB) to Mean Sea Level						5174ft

Survey Program

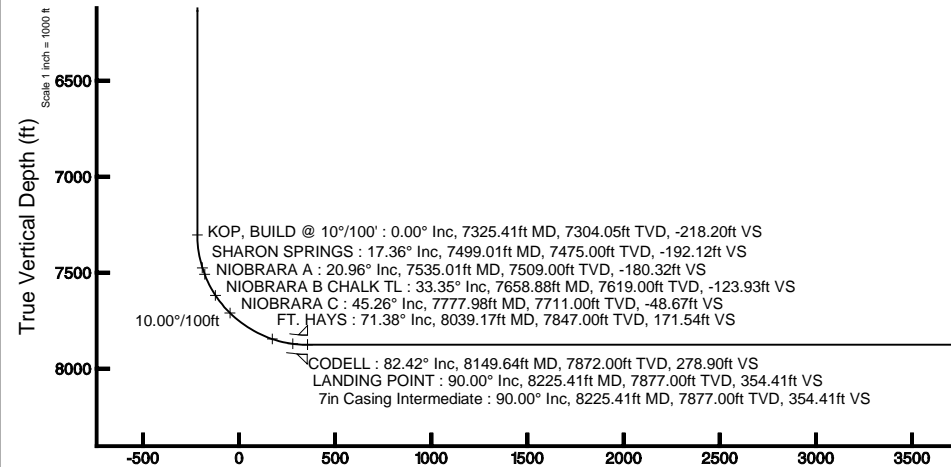
Start MD (ft)	End MD (ft)	Tool	Model	Log Name/Comment	Wellbore
16.00	8225.41	Navitrak	Navitrak (Standard)		JELTS 37C-19HZ PWB
8225.41	12420.56	OnTrak	OnTrak (Standard)		JELTS 37C-19HZ PWB

Well Profile Data

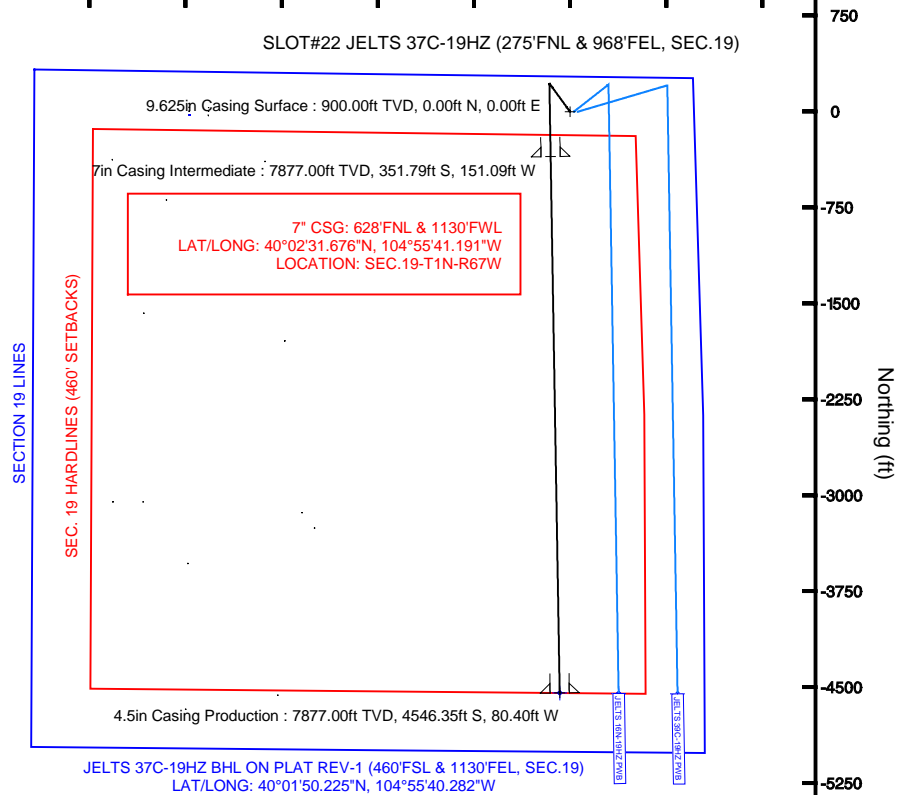
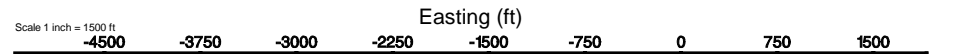
Design Comment	MD (ft)	Inc (°)	Az (°)	TVD (ft)	Local N (ft)	Local E (ft)	DLS (°/100ft)	VS (ft)
TIE-ON	16.00	0.000	323.980	16.00	0.00	0.00	0.00	0.00
BEGIN NUDGE	1300.00	0.000	323.980	1300.00	0.00	0.00	0.00	0.00
END NUDGE	1800.00	10.000	323.980	1797.47	35.20	-25.59	2.00	-34.74
BEGIN DROP	2872.83	10.000	323.980	2854.00	185.88	-135.15	0.00	-183.46
END DROP	3372.83	0.000	179.035	3351.47	221.08	-160.74	2.00	-218.20
KOP, BUILD @ 10°/100'	7325.41	0.000	179.035	7304.05	221.08	-160.74	0.00	-218.20
LANDING POINT	8225.41	90.000	179.035	7877.00	-351.80	-151.09	10.00	354.41
TOTAL DEPTH	12420.56	90.000	179.034	7877.00	-4546.35	-80.40	0.00	4547.06

Targets

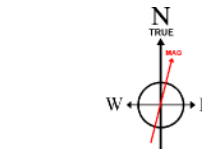
Name	MD (ft)	TVD (ft)	Local N (ft)	Local E (ft)	Grid East (US ft)	Grid North (US ft)	Latitude	Longitude
SECTION 19 LINES		41.00	-26.44	-2972.69	3160266.172	1259018.03	40°02'34.890"N	104°56'17.470"W
JELTS 37C-19HZ BHL ON PLAT REV-1 (460'FSL & 1130'FEL, SEC.19)	12420.56	7877.00	-4546.35	-80.40	3160216.12	1254517.05	40°01'50.225"N	104°55'40.282"W
SEC. 19 HARDLINES (460' SETBACKS)		8041.00	-26.44	-2972.69	3160266.172	1259018.03	40°02'34.890"N	104°56'17.470"W



Vertical Section (ft)
 Azimuth 181.01° with reference 0.00 N, 0.00 E



JELTS 37C-19HZ BHL ON PLAT REV-1 (460'FSL & 1130'FEL, SEC.19)
 LAT/LONG: 40°01'50.225"N, 104°55'40.282"W



BGGM (1945.0 to 2014.0) Dip: 66.64° Field: 52627.5 nT
 Magnetic North is 8.72 degrees East of True North (at 5/3/2013)

To correct azimuth from Magnetic to True add 8.72 degrees
 For example: if the Magnetic North Azimuth = 90 degs, then the True North Azimuth = 90 + 8.72 = 98.72

4.5in Casing Production : 90.00° Inc, 12420.56ft MD, 7877.00ft TVD, 4547.06ft VS
 TOTAL DEPTH : 90.00° Inc, 12420.56ft MD, 7877.00ft TVD, 4547.06ft VS
 JELTS 37C-19HZ BHL ON PLAT REV-1 (460'FSL & 1130'FEL, SEC.19)

Scale 1 inch = 1000 ft



Planned Wellpath Report

JELTS 37C-19HZ (PERMIT REV-1) PWP
Page 1 of 6



REFERENCE WELLPATH IDENTIFICATION			
Operator	KERR-MCGEE OIL & GAS ONSHORE LP	Slot	SLOT#22 JELTS 37C-19HZ (275'FNL & 968'FEL, SEC.19)
Area	COLORADO	Well	JELTS 37C-19HZ
Field	WELD COUNTY (KERR MCGEE)	Wellbore	JELTS 37C-19HZ PWB
Facility	SEC.19-T1N-R67W		

REPORT SETUP INFORMATION			
Projection System	NAD83 / Lambert Colorado SP, Northern Zone (501), US feet	Software System	WellArchitect@ 3.0.2
North Reference	True	User	Wilsjef02
Scale	0.999963	Report Generated	5/3/2013 at 09:57:33
Convergence at slot	0.37° East	Database/Source file	WellArchitectDB/JELTS_37C-19HZ_PWB.xml

WELLPATH LOCATION						
	Local coordinates		Grid coordinates		Geographic coordinates	
	North[ft]	East[ft]	Easting[US ft]	Northing[US ft]	Latitude	Longitude
Slot Location	26.69	2972.77	3160266.17	1259063.65	40°02'35.153"N	104°55'39.248"W
Facility Reference Pt			3157293.75	1259018.13	40°02'34.891"N	104°56'17.471"W
Field Reference Pt			3197771.84	1268891.29	40°04'09.600"N	104°47'36.000"W

WELLPATH DATUM			
Calculation method	Minimum curvature	XTREME 24 (RKB) to Facility Vertical Datum	5174.00ft
Horizontal Reference Pt	Slot	XTREME 24 (RKB) to Mean Sea Level	5174.00ft
Vertical Reference Pt	XTREME 24 (RKB)	XTREME 24 (RKB) to Mud Line at Slot (SLOT#22 JELTS 37C-19HZ (275'FNL & 968'FEL, SEC.19))	5174.00ft
MD Reference Pt	XTREME 24 (RKB)	Section Origin	N 0.00, E 0.00 ft
Field Vertical Reference	Mean Sea Level	Section Azimuth	181.01°



Planned Wellpath Report

JELTS 37C-19HZ (PERMIT REV-1) PWP

Page 2 of 6



REFERENCE WELLPATH IDENTIFICATION			
Operator	KERR-MCGEE OIL & GAS ONSHORE LP	Slot	SLOT#22 JELTS 37C-19HZ (275'FNL & 968'FEL, SEC.19)
Area	COLORADO	Well	JELTS 37C-19HZ
Field	WELD COUNTY (KERR MCGEE)	Wellbore	JELTS 37C-19HZ PWB
Facility	SEC.19-T1N-R67W		

WELLPATH DATA (140 stations) † = interpolated/extrapolated station										
MD [ft]	Inclination [°]	Azimuth [°]	TVD [ft]	Vert Sect [ft]	North [ft]	East [ft]	Latitude	Longitude	DLS [°/100ft]	Comments
0.00†	0.000	323.980	0.00	0.00	0.00	0.00	40°02'35.153"N	104°55'39.248"W	0.00	
16.00	0.000	323.980	16.00	0.00	0.00	0.00	40°02'35.153"N	104°55'39.248"W	0.00	TIE-ON
116.00†	0.000	323.980	116.00	0.00	0.00	0.00	40°02'35.153"N	104°55'39.248"W	0.00	
216.00†	0.000	323.980	216.00	0.00	0.00	0.00	40°02'35.153"N	104°55'39.248"W	0.00	
316.00†	0.000	323.980	316.00	0.00	0.00	0.00	40°02'35.153"N	104°55'39.248"W	0.00	
416.00†	0.000	323.980	416.00	0.00	0.00	0.00	40°02'35.153"N	104°55'39.248"W	0.00	
516.00†	0.000	323.980	516.00	0.00	0.00	0.00	40°02'35.153"N	104°55'39.248"W	0.00	
616.00†	0.000	323.980	616.00	0.00	0.00	0.00	40°02'35.153"N	104°55'39.248"W	0.00	
716.00†	0.000	323.980	716.00	0.00	0.00	0.00	40°02'35.153"N	104°55'39.248"W	0.00	
816.00†	0.000	323.980	816.00	0.00	0.00	0.00	40°02'35.153"N	104°55'39.248"W	0.00	
916.00†	0.000	323.980	916.00	0.00	0.00	0.00	40°02'35.153"N	104°55'39.248"W	0.00	
1016.00†	0.000	323.980	1016.00	0.00	0.00	0.00	40°02'35.153"N	104°55'39.248"W	0.00	
1116.00†	0.000	323.980	1116.00	0.00	0.00	0.00	40°02'35.153"N	104°55'39.248"W	0.00	
1216.00†	0.000	323.980	1216.00	0.00	0.00	0.00	40°02'35.153"N	104°55'39.248"W	0.00	
1300.00	0.000	323.980	1300.00	0.00	0.00	0.00	40°02'35.153"N	104°55'39.248"W	0.00	BEGIN NUDGE
1316.00†	0.320	323.980	1316.00	-0.04	0.04	-0.03	40°02'35.153"N	104°55'39.248"W	2.00	
1416.00†	2.320	323.980	1415.97	-1.87	1.90	-1.38	40°02'35.172"N	104°55'39.266"W	2.00	
1516.00†	4.320	323.980	1515.80	-6.50	6.58	-4.79	40°02'35.218"N	104°55'39.310"W	2.00	
1616.00†	6.320	323.980	1615.36	-13.90	14.08	-10.24	40°02'35.292"N	104°55'39.380"W	2.00	
1716.00†	8.320	323.980	1714.54	-24.07	24.39	-17.73	40°02'35.394"N	104°55'39.476"W	2.00	
1800.00	10.000	323.980	1797.47	-34.74	35.20	-25.59	40°02'35.501"N	104°55'39.577"W	2.00	END NUDGE
1816.00†	10.000	323.980	1813.22	-36.96	37.45	-27.23	40°02'35.523"N	104°55'39.598"W	0.00	
1916.00†	10.000	323.980	1911.70	-50.82	51.49	-37.44	40°02'35.662"N	104°55'39.729"W	0.00	
2016.00†	10.000	323.980	2010.18	-64.69	65.54	-47.65	40°02'35.801"N	104°55'39.861"W	0.00	
2116.00†	10.000	323.980	2108.66	-78.55	79.58	-57.86	40°02'35.939"N	104°55'39.992"W	0.00	
2216.00†	10.000	323.980	2207.15	-92.41	93.63	-68.07	40°02'36.078"N	104°55'40.123"W	0.00	
2316.00†	10.000	323.980	2305.63	-106.27	107.67	-78.29	40°02'36.217"N	104°55'40.255"W	0.00	
2416.00†	10.000	323.980	2404.11	-120.13	121.72	-88.50	40°02'36.356"N	104°55'40.386"W	0.00	
2516.00†	10.000	323.980	2502.59	-134.00	135.76	-98.71	40°02'36.495"N	104°55'40.517"W	0.00	
2616.00†	10.000	323.980	2601.07	-147.86	149.81	-108.92	40°02'36.633"N	104°55'40.648"W	0.00	
2716.00†	10.000	323.980	2699.55	-161.72	163.85	-119.13	40°02'36.772"N	104°55'40.780"W	0.00	
2816.00†	10.000	323.980	2798.03	-175.58	177.90	-129.34	40°02'36.911"N	104°55'40.911"W	0.00	
2872.83	10.000	323.980	2854.00	-183.46	185.88	-135.15	40°02'36.990"N	104°55'40.986"W	0.00	BEGIN DROP
2916.00†	9.137	323.980	2896.57	-189.19	191.68	-139.37	40°02'37.047"N	104°55'41.040"W	2.00	
3016.00†	7.137	323.980	2995.55	-200.49	203.13	-147.69	40°02'37.160"N	104°55'41.147"W	2.00	
3116.00†	5.137	323.980	3094.98	-209.02	211.78	-153.98	40°02'37.246"N	104°55'41.228"W	2.00	
3216.00†	3.137	323.980	3194.71	-214.78	217.61	-158.22	40°02'37.303"N	104°55'41.282"W	2.00	
3316.00†	1.137	323.980	3294.64	-217.75	220.63	-160.41	40°02'37.333"N	104°55'41.311"W	2.00	
3372.83	0.000	179.035	3351.47	-218.20	221.08	-160.74	40°02'37.338"N	104°55'41.315"W	2.00	END DROP
3416.00†	0.000	179.035	3394.63	-218.20	221.08	-160.74	40°02'37.338"N	104°55'41.315"W	0.00	
3516.00†	0.000	179.035	3494.63	-218.20	221.08	-160.74	40°02'37.338"N	104°55'41.315"W	0.00	
3616.00†	0.000	179.035	3594.63	-218.20	221.08	-160.74	40°02'37.338"N	104°55'41.315"W	0.00	
3716.00†	0.000	179.035	3694.63	-218.20	221.08	-160.74	40°02'37.338"N	104°55'41.315"W	0.00	
3816.00†	0.000	179.035	3794.63	-218.20	221.08	-160.74	40°02'37.338"N	104°55'41.315"W	0.00	
3916.00†	0.000	179.035	3894.63	-218.20	221.08	-160.74	40°02'37.338"N	104°55'41.315"W	0.00	



Planned Wellpath Report

JELTS 37C-19HZ (PERMIT REV-1) PWP

Page 3 of 6



REFERENCE WELLPATH IDENTIFICATION			
Operator	KERR-MCGEE OIL & GAS ONSHORE LP	Slot	SLOT#22 JELTS 37C-19HZ (275'FNL & 968'FEL, SEC.19)
Area	COLORADO	Well	JELTS 37C-19HZ
Field	WELD COUNTY (KERR MCGEE)	Wellbore	JELTS 37C-19HZ PWB
Facility	SEC.19-T1N-R67W		

WELLPATH DATA (140 stations) † = interpolated/extrapolated station										
MD [ft]	Inclination [°]	Azimuth [°]	TVD [ft]	Vert Sect [ft]	North [ft]	East [ft]	Latitude	Longitude	DLS [°/100ft]	Comments
4016.00†	0.000	179.035	3994.63	-218.20	221.08	-160.74	40°02'37.338"N	104°55'41.315"W	0.00	
4116.00†	0.000	179.035	4094.63	-218.20	221.08	-160.74	40°02'37.338"N	104°55'41.315"W	0.00	
4216.00†	0.000	179.035	4194.63	-218.20	221.08	-160.74	40°02'37.338"N	104°55'41.315"W	0.00	
4316.00†	0.000	179.035	4294.63	-218.20	221.08	-160.74	40°02'37.338"N	104°55'41.315"W	0.00	
4416.00†	0.000	179.035	4394.63	-218.20	221.08	-160.74	40°02'37.338"N	104°55'41.315"W	0.00	
4516.00†	0.000	179.035	4494.63	-218.20	221.08	-160.74	40°02'37.338"N	104°55'41.315"W	0.00	
4616.00†	0.000	179.035	4594.63	-218.20	221.08	-160.74	40°02'37.338"N	104°55'41.315"W	0.00	
4716.00†	0.000	179.035	4694.63	-218.20	221.08	-160.74	40°02'37.338"N	104°55'41.315"W	0.00	
4816.00†	0.000	179.035	4794.63	-218.20	221.08	-160.74	40°02'37.338"N	104°55'41.315"W	0.00	
4916.00†	0.000	179.035	4894.63	-218.20	221.08	-160.74	40°02'37.338"N	104°55'41.315"W	0.00	
4945.37†	0.000	179.035	4924.00	-218.20	221.08	-160.74	40°02'37.338"N	104°55'41.315"W	0.00	SUSSEX
5016.00†	0.000	179.035	4994.63	-218.20	221.08	-160.74	40°02'37.338"N	104°55'41.315"W	0.00	
5116.00†	0.000	179.035	5094.63	-218.20	221.08	-160.74	40°02'37.338"N	104°55'41.315"W	0.00	
5216.00†	0.000	179.035	5194.63	-218.20	221.08	-160.74	40°02'37.338"N	104°55'41.315"W	0.00	
5316.00†	0.000	179.035	5294.63	-218.20	221.08	-160.74	40°02'37.338"N	104°55'41.315"W	0.00	
5416.00†	0.000	179.035	5394.63	-218.20	221.08	-160.74	40°02'37.338"N	104°55'41.315"W	0.00	
5516.00†	0.000	179.035	5494.63	-218.20	221.08	-160.74	40°02'37.338"N	104°55'41.315"W	0.00	
5616.00†	0.000	179.035	5594.63	-218.20	221.08	-160.74	40°02'37.338"N	104°55'41.315"W	0.00	
5716.00†	0.000	179.035	5694.63	-218.20	221.08	-160.74	40°02'37.338"N	104°55'41.315"W	0.00	
5816.00†	0.000	179.035	5794.63	-218.20	221.08	-160.74	40°02'37.338"N	104°55'41.315"W	0.00	
5916.00†	0.000	179.035	5894.63	-218.20	221.08	-160.74	40°02'37.338"N	104°55'41.315"W	0.00	
6016.00†	0.000	179.035	5994.63	-218.20	221.08	-160.74	40°02'37.338"N	104°55'41.315"W	0.00	
6116.00†	0.000	179.035	6094.63	-218.20	221.08	-160.74	40°02'37.338"N	104°55'41.315"W	0.00	
6216.00†	0.000	179.035	6194.63	-218.20	221.08	-160.74	40°02'37.338"N	104°55'41.315"W	0.00	
6316.00†	0.000	179.035	6294.63	-218.20	221.08	-160.74	40°02'37.338"N	104°55'41.315"W	0.00	
6416.00†	0.000	179.035	6394.63	-218.20	221.08	-160.74	40°02'37.338"N	104°55'41.315"W	0.00	
6516.00†	0.000	179.035	6494.63	-218.20	221.08	-160.74	40°02'37.338"N	104°55'41.315"W	0.00	
6616.00†	0.000	179.035	6594.63	-218.20	221.08	-160.74	40°02'37.338"N	104°55'41.315"W	0.00	
6716.00†	0.000	179.035	6694.63	-218.20	221.08	-160.74	40°02'37.338"N	104°55'41.315"W	0.00	
6816.00†	0.000	179.035	6794.63	-218.20	221.08	-160.74	40°02'37.338"N	104°55'41.315"W	0.00	
6916.00†	0.000	179.035	6894.63	-218.20	221.08	-160.74	40°02'37.338"N	104°55'41.315"W	0.00	
7016.00†	0.000	179.035	6994.63	-218.20	221.08	-160.74	40°02'37.338"N	104°55'41.315"W	0.00	
7116.00†	0.000	179.035	7094.63	-218.20	221.08	-160.74	40°02'37.338"N	104°55'41.315"W	0.00	
7216.00†	0.000	179.035	7194.63	-218.20	221.08	-160.74	40°02'37.338"N	104°55'41.315"W	0.00	
7316.00†	0.000	179.035	7294.63	-218.20	221.08	-160.74	40°02'37.338"N	104°55'41.315"W	0.00	
7325.41	0.000	179.035	7304.05	-218.20	221.08	-160.74	40°02'37.338"N	104°55'41.315"W	0.00	KOP, BUILD @ 10°/100'
7416.00†	9.059	179.035	7394.26	-211.06	213.94	-160.62	40°02'37.267"N	104°55'41.313"W	10.00	
7499.01†	17.360	179.035	7475.00	-192.12	194.99	-160.30	40°02'37.080"N	104°55'41.309"W	10.00	SHARON SPRINGS
7516.00†	19.059	179.035	7491.14	-186.82	189.68	-160.21	40°02'37.027"N	104°55'41.308"W	10.00	
7535.01†	20.960	179.035	7509.00	-180.32	183.17	-160.10	40°02'36.963"N	104°55'41.307"W	10.00	NIOBRARA A
7616.00†	29.059	179.035	7582.33	-146.13	148.97	-159.53	40°02'36.625"N	104°55'41.299"W	10.00	
7658.88†	33.346	179.035	7619.00	-123.93	126.76	-159.15	40°02'36.406"N	104°55'41.294"W	10.00	NIOBRARA B CHALK TL
7716.00†	39.059	179.035	7665.08	-90.23	93.04	-158.59	40°02'36.072"N	104°55'41.287"W	10.00	
7777.98†	45.257	179.035	7711.00	-48.67	51.47	-157.89	40°02'35.662"N	104°55'41.278"W	10.00	NIOBRARA C
7816.00†	49.059	179.035	7736.85	-20.82	23.60	-157.42	40°02'35.386"N	104°55'41.272"W	10.00	



Planned Wellpath Report

JELTS 37C-19HZ (PERMIT REV-1) PWP

Page 4 of 6



REFERENCE WELLPATH IDENTIFICATION			
Operator	KERR-MCGEE OIL & GAS ONSHORE LP	Slot	SLOT#22 JELTS 37C-19HZ (275'FNL & 968'FEL, SEC.19)
Area	COLORADO	Well	JELTS 37C-19HZ
Field	WELD COUNTY (KERR MCGEE)	Wellbore	JELTS 37C-19HZ PWB
Facility	SEC.19-T1N-R67W		

WELLPATH DATA (140 stations) † = interpolated/extrapolated station										
MD [ft]	Inclination [°]	Azimuth [°]	TVD [ft]	Vert Sect [ft]	North [ft]	East [ft]	Latitude	Longitude	DLS [°/100ft]	Comments
7916.00†	59.059	179.035	7795.47	60.00	-57.25	-156.05	40°02'34.587"N	104°55'41.255"W	10.00	
8016.00†	69.059	179.035	7839.16	149.75	-147.04	-154.54	40°02'33.700"N	104°55'41.235"W	10.00	
8039.17†	71.376	179.035	7847.00	171.54	-168.84	-154.17	40°02'33.484"N	104°55'41.230"W	10.00	FT. HAYS
8116.00†	79.059	179.035	7866.59	245.73	-243.06	-152.92	40°02'32.751"N	104°55'41.214"W	10.00	
8149.64†	82.423	179.035	7872.00	278.90	-276.25	-152.37	40°02'32.423"N	104°55'41.207"W	10.00	CODELL
8216.00†	89.059	179.035	7876.93	345.00	-342.38	-151.25	40°02'31.769"N	104°55'41.193"W	10.00	
8225.41	90.000	179.035	7877.00	354.41	-351.80	-151.09	40°02'31.676"N	104°55'41.191"W	10.00	LANDING POINT
8316.00†	90.000	179.035	7877.00	444.94	-442.37	-149.57	40°02'30.781"N	104°55'41.171"W	0.00	
8416.00†	90.000	179.035	7877.00	544.89	-542.35	-147.88	40°02'29.793"N	104°55'41.149"W	0.00	
8516.00†	90.000	179.035	7877.00	644.83	-642.34	-146.20	40°02'28.805"N	104°55'41.128"W	0.00	
8616.00†	90.000	179.035	7877.00	744.77	-742.33	-144.51	40°02'27.817"N	104°55'41.106"W	0.00	
8716.00†	90.000	179.035	7877.00	844.71	-842.31	-142.83	40°02'26.829"N	104°55'41.084"W	0.00	
8816.00†	90.000	179.035	7877.00	944.65	-942.30	-141.15	40°02'25.841"N	104°55'41.063"W	0.00	
8916.00†	90.000	179.035	7877.00	1044.59	-1042.28	-139.46	40°02'24.853"N	104°55'41.041"W	0.00	
9016.00†	90.000	179.035	7877.00	1144.53	-1142.27	-137.78	40°02'23.865"N	104°55'41.019"W	0.00	
9116.00†	90.000	179.035	7877.00	1244.47	-1242.26	-136.09	40°02'22.877"N	104°55'40.998"W	0.00	
9216.00†	90.000	179.035	7877.00	1344.41	-1342.24	-134.41	40°02'21.889"N	104°55'40.976"W	0.00	
9316.00†	90.000	179.035	7877.00	1444.35	-1442.23	-132.72	40°02'20.901"N	104°55'40.954"W	0.00	
9416.00†	90.000	179.035	7877.00	1544.29	-1542.21	-131.04	40°02'19.912"N	104°55'40.933"W	0.00	
9516.00†	90.000	179.035	7877.00	1644.23	-1642.20	-129.35	40°02'18.924"N	104°55'40.911"W	0.00	
9616.00†	90.000	179.035	7877.00	1744.17	-1742.18	-127.67	40°02'17.936"N	104°55'40.889"W	0.00	
9716.00†	90.000	179.035	7877.00	1844.11	-1842.17	-125.98	40°02'16.948"N	104°55'40.868"W	0.00	
9816.00†	90.000	179.035	7877.00	1944.05	-1942.16	-124.30	40°02'15.960"N	104°55'40.846"W	0.00	
9916.00†	90.000	179.035	7877.00	2043.99	-2042.14	-122.61	40°02'14.972"N	104°55'40.824"W	0.00	
10016.00†	90.000	179.035	7877.00	2143.93	-2142.13	-120.93	40°02'13.984"N	104°55'40.803"W	0.00	
10116.00†	90.000	179.035	7877.00	2243.87	-2242.11	-119.25	40°02'12.996"N	104°55'40.781"W	0.00	
10216.00†	90.000	179.035	7877.00	2343.81	-2342.10	-117.56	40°02'12.008"N	104°55'40.759"W	0.00	
10316.00†	90.000	179.034	7877.00	2443.75	-2442.09	-115.87	40°02'11.020"N	104°55'40.738"W	0.00	
10416.00†	90.000	179.034	7877.00	2543.69	-2542.07	-114.19	40°02'10.032"N	104°55'40.716"W	0.00	
10516.00†	90.000	179.034	7877.00	2643.63	-2642.06	-112.50	40°02'09.044"N	104°55'40.694"W	0.00	
10616.00†	90.000	179.034	7877.00	2743.57	-2742.04	-110.82	40°02'08.055"N	104°55'40.673"W	0.00	
10716.00†	90.000	179.034	7877.00	2843.51	-2842.03	-109.13	40°02'07.067"N	104°55'40.651"W	0.00	
10816.00†	90.000	179.034	7877.00	2943.45	-2942.01	-107.45	40°02'06.079"N	104°55'40.629"W	0.00	
10916.00†	90.000	179.034	7877.00	3043.39	-3042.00	-105.76	40°02'05.091"N	104°55'40.608"W	0.00	
11016.00†	90.000	179.034	7877.00	3143.34	-3141.99	-104.08	40°02'04.103"N	104°55'40.586"W	0.00	
11116.00†	90.000	179.034	7877.00	3243.28	-3241.97	-102.39	40°02'03.115"N	104°55'40.564"W	0.00	
11216.00†	90.000	179.034	7877.00	3343.22	-3341.96	-100.71	40°02'02.127"N	104°55'40.543"W	0.00	
11316.00†	90.000	179.034	7877.00	3443.16	-3441.94	-99.02	40°02'01.139"N	104°55'40.521"W	0.00	
11416.00†	90.000	179.034	7877.00	3543.10	-3541.93	-97.34	40°02'00.151"N	104°55'40.499"W	0.00	
11516.00†	90.000	179.034	7877.00	3643.04	-3641.91	-95.65	40°01'59.163"N	104°55'40.478"W	0.00	
11616.00†	90.000	179.034	7877.00	3742.98	-3741.90	-93.97	40°01'58.175"N	104°55'40.456"W	0.00	
11716.00†	90.000	179.034	7877.00	3842.92	-3841.89	-92.28	40°01'57.187"N	104°55'40.434"W	0.00	
11816.00†	90.000	179.034	7877.00	3942.86	-3941.87	-90.59	40°01'56.198"N	104°55'40.413"W	0.00	
11916.00†	90.000	179.034	7877.00	4042.80	-4041.86	-88.91	40°01'55.210"N	104°55'40.391"W	0.00	
12016.00†	90.000	179.034	7877.00	4142.74	-4141.84	-87.22	40°01'54.222"N	104°55'40.369"W	0.00	



Planned Wellpath Report

JELTS 37C-19HZ (PERMIT REV-1) PWP

Page 5 of 6



REFERENCE WELLPATH IDENTIFICATION			
Operator	KERR-MCGEE OIL & GAS ONSHORE LP	Slot	SLOT#22 JELTS 37C-19HZ (275'FNL & 968'FEL, SEC.19)
Area	COLORADO	Well	JELTS 37C-19HZ
Field	WELD COUNTY (KERR MCGEE)	Wellbore	JELTS 37C-19HZ PWB
Facility	SEC.19-T1N-R67W		

WELLPATH DATA (140 stations) † = interpolated/extrapolated station										
MD [ft]	Inclination [°]	Azimuth [°]	TVD [ft]	Vert Sect [ft]	North [ft]	East [ft]	Latitude	Longitude	DLS [°/100ft]	Comments
12116.00†	90.000	179.034	7877.00	4242.68	-4241.83	-85.54	40°01'53.234"N	104°55'40.348"W	0.00	
12216.00†	90.000	179.034	7877.00	4342.62	-4341.82	-83.85	40°01'52.246"N	104°55'40.326"W	0.00	
12316.00†	90.000	179.034	7877.00	4442.56	-4441.80	-82.17	40°01'51.258"N	104°55'40.304"W	0.00	
12416.00†	90.000	179.034	7877.00	4542.50	-4541.79	-80.48	40°01'50.270"N	104°55'40.283"W	0.00	
12420.56	90.000	179.034	7877.00 ¹	4547.06	-4546.35	-80.40	40°01'50.225"N	104°55'40.282"W	0.00	TOTAL DEPTH

HOLE & CASING SECTIONS - Ref Wellbore: JELTS 37C-19HZ PWB Ref Wellpath: JELTS 37C-19HZ (PERMIT REV-1) PWP									
String/Diameter	Start MD [ft]	End MD [ft]	Interval [ft]	Start TVD [ft]	End TVD [ft]	Start N/S [ft]	Start E/W [ft]	End N/S [ft]	End E/W [ft]
13.5in Open Hole	16.00	900.00	884.00	16.00	900.00	0.00	0.00	0.00	0.00
9.625in Casing Surface	16.00	900.00	884.00	16.00	900.00	0.00	0.00	0.00	0.00
8.75in Open Hole	900.00	8225.41	7325.41	900.00	7877.00	0.00	0.00	-351.79	-151.09
7in Casing Intermediate	16.00	8225.41	8209.41	16.00	7877.00	0.00	0.00	-351.79	-151.09
6.125in Open Hole	8225.41	12420.56	4195.15	7877.00	7877.00	-351.79	-151.09	-4546.35	-80.40
4.5in Casing Production	16.00	12420.56	12404.56	16.00	7877.00	0.00	0.00	-4546.35	-80.40

TARGETS									
Name	MD [ft]	TVD [ft]	North [ft]	East [ft]	Grid East [US ft]	Grid North [US ft]	Latitude	Longitude	Shape
SECTION 19 LINES		41.00	-26.44	-2972.69	3157293.83	1259018.03	40°02'34.890"N	104°56'17.470"W	polygon
1) JELTS 37C-19HZ BHL ON PLAT REV-1 (460'FSL & 1130'FEL, SEC.19)	12420.56	7877.00	-4546.35	-80.40	3160215.12	1254517.05	40°01'50.225"N	104°55'40.282"W	point
SEC. 19 HARDLINES (460' SETBACKS)		8041.00	-26.44	-2972.69	3157293.83	1259018.03	40°02'34.890"N	104°56'17.470"W	polygon

SURVEY PROGRAM - Ref Wellbore: JELTS 37C-19HZ PWB Ref Wellpath: JELTS 37C-19HZ (PERMIT REV-1) PWP				
Start MD [ft]	End MD [ft]	Positional Uncertainty Model	Log Name/Comment	Wellbore
16.00	8225.41	NaviTrak (Standard)		JELTS 37C-19HZ PWB
8225.41	12420.56	OnTrak (Standard)		JELTS 37C-19HZ PWB



Planned Wellpath Report
JELTS 37C-19HZ (PERMIT REV-1) PWP
 Page 6 of 6



REFERENCE WELLPATH IDENTIFICATION			
Operator	KERR-MCGEE OIL & GAS ONSHORE LP	Slot	SLOT#22 JELTS 37C-19HZ (275'FNL & 968'FEL, SEC.19)
Area	COLORADO	Well	JELTS 37C-19HZ
Field	WELD COUNTY (KERR MCGEE)	Wellbore	JELTS 37C-19HZ PWB
Facility	SEC.19-T1N-R67W		

WELLPATH COMMENTS				
MD [ft]	Inclination [°]	Azimuth [°]	TVD [ft]	Comment
4945.37	0.000	179.035	4924.00	SUSSEX
7499.01	17.360	179.035	7475.00	SHARON SPRINGS
7535.01	20.960	179.035	7509.00	NIOBRARA A
7658.88	33.346	179.035	7619.00	NIOBRARA B CHALK TL
7777.98	45.257	179.035	7711.00	NIOBRARA C
8039.17	71.376	179.035	7847.00	FT. HAYS
8149.64	82.423	179.035	7872.00	CODELL