

Location: COLORADO	Slot: SLOT#24 JELTS 15C-19HZ (275'FNL & 1858'FEL, SEC.19)
Field: WELD COUNTY (KERR MCGEE)	Well: JELTS 15C-19HZ
Facility: SEC.19-T1N-R67W	Wellbore: JELTS 15C-19HZ PWB

Plot reference wellpath is JELTS 15C-19HZ (PERMIT REV-1) PWB

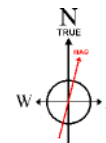
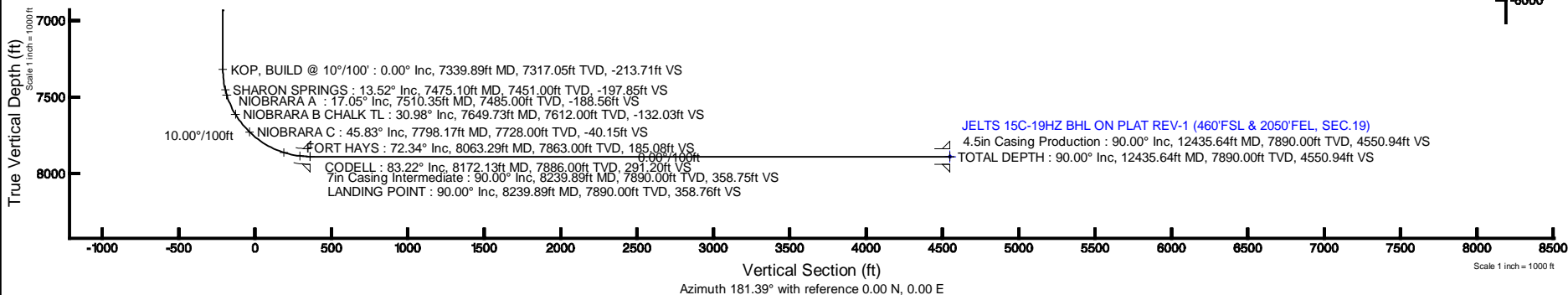
True vertical depths are referenced to ENSIGN 145 (RKB)	Grid System: NAD83 / Lambert Colorado SP, Northern Zone (501), US feet
Measured depths are referenced to ENSIGN 145 (RKB)	North Reference: True north
ENSGIN 145 (RKB) to Mean Sea Level: 5160 feet	Scale: True distance
Mean Sea Level to Mud line (At Slot: SLOT#24 JELTS 15C-19HZ (275'FNL & 1858'FEL, SEC.19): 0 feet	Depths are in feet
Coordinates are in feet referenced to Slot	Created by: preccain on 5/3/2013

Location Information						
Facility Name			Grid East (US ft)	Grid North (US ft)	Latitude	Longitude
SEC. 19-T1N-R67W			3157293.749	1259018.130	40°02'34.891"N	104°56'17.471"W
Slot	Local N (ft)	Local E (ft)	Grid East (US ft)	Grid North (US ft)	Latitude	Longitude
SLOT#24 JELTS 15C-19HZ (275FNL & 1858FEL SEC.19)	38.24	2062.40	3159375.790	1259069.557	40°02'35.268"N	104°55'50.696"W
ENSGIN 145 (RK#) to Mud line (At Slot: SLOT#24 JELTS 15C-19HZ (275FNL & 1858FEL SEC.19))					5160R	
Mean Sea Level to Mud line (At Slot: SLOT#24 JELTS 15C-19HZ (275FNL & 1858FEL SEC.19))					0R	
ENSGIN 145 (RK#) to Mean Sea Level					5160R	

Start MD (ft)	End MD (ft)	Tool	Model	Log Name/Comment	Wellbore
13.00	8239.89	NaviTrak	NaviTrak (Standard)		JELTS 15C-19HZ PWB
8239.89	12435.64	OnTrak	OnTrak (Standard)		JELTS 15C-19HZ PWB

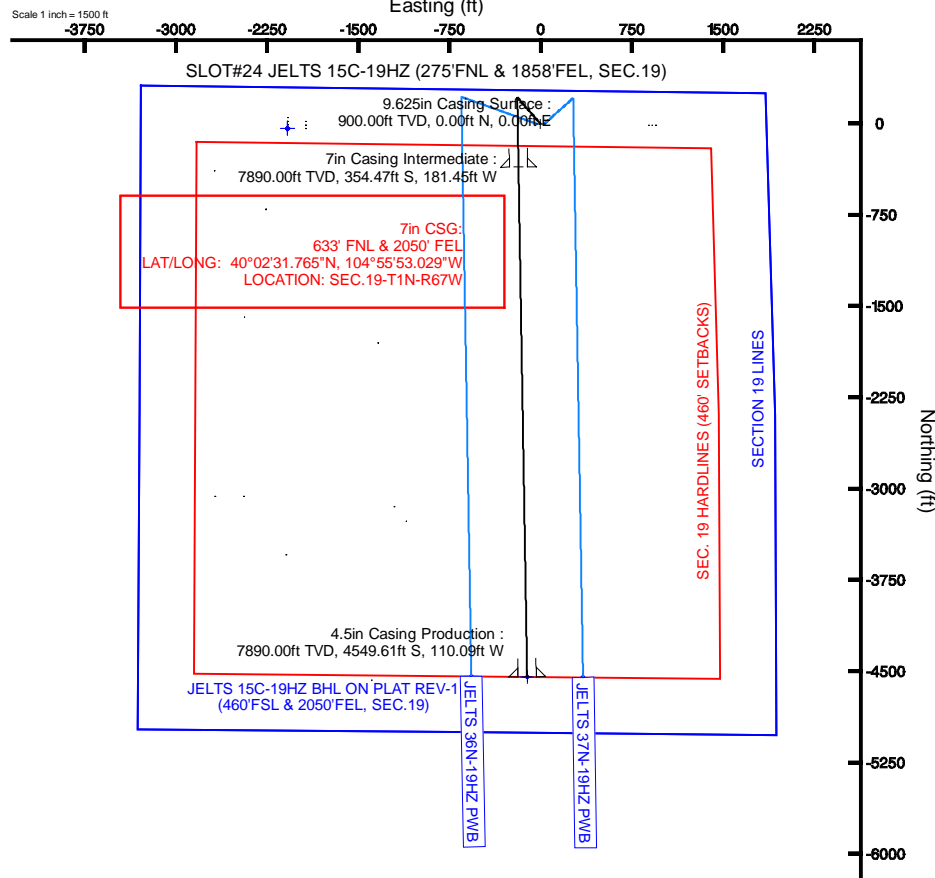
Design Comment	MD (ft)	Inc (°)	Az (°)	TVD (ft)	Local N (ft)	Local E (ft)	DLS (°/100ft)	VS (ft)
TIE-ON	13.00	0.000	318.800	13.00	0.00	0.00	0.00	0.00
BEGIN NUDGE	1200.00	0.000	318.800	1200.00	0.00	0.00	0.00	0.00
ENS NUDGE	1700.00	10.000	318.800	1697.47	32.75	-28.67	2.00	-32.04
BEGIN DROP	2870.31	10.000	318.800	2850.00	185.66	-162.53	0.00	-181.67
END DROP	3370.31	0.000	179.025	3347.47	218.40	-191.20	2.00	-213.71
KOP, BUILD @ 10°/100'	7339.89	0.000	179.025	7317.05	218.40	-191.20	0.00	-213.71
LANDING POINT	8239.89	90.000	179.025	7890.00	-354.47	-181.45	10.00	358.76
TOTAL DEPTH	12435.64	90.000	179.026	7890.00	-4549.61	-11.09	0.00	4550.94

Name	MD (ft)	TVD (ft)	Local N (ft)	Local E (ft)	Grid East (US ft)	Grid North (US ft)	Latitude	Longitude
SECTION 19 LINES		27.00	-38.16	-2082.33	3157293.83	1259018.03	40°02'34.890"N	104°56'17.470"W
JELTS 19C-19H2 BHL ON PLAT REV 1 (460FSL & 2050FEL SEC. 19.)		7890.00	-4549.61	-110.09	3159294.82	1254519.51	40°01'50.308"N	104°55'52.111"W
SEC. 19 HARD LINES (460 SETBACKS)		8027.00	-38.16	-2082.33	3157293.83	1259018.03	40°02'34.890"N	104°56'17.470"W



BGGM (1945.0 to 2014.0) Dip: 66.64° Field: 52627.2 nT
Magnetic North is 8.72 degrees East of True North (at 5/3/2013)

To correct azimuth from Magnetic to True add 8.72 degrees
For example: if the Magnetic North Azimuth = 90 degs, then the True North Azimuth = $90 + 8.72 = 98.72$





Planned Wellpath Report

JELTS 15C-19HZ (PERMIT REV-1) PWP

Page 1 of 6



REFERENCE WELLPATH IDENTIFICATION			
Operator	KERR-MCGEE OIL & GAS ONSHORE LP	Slot	SLOT#24 JELTS 15C-19HZ (275'FNL & 1858'FEL, SEC.19)
Area	COLORADO	Well	JELTS 15C-19HZ
Field	WELD COUNTY (KERR MCGEE)	Wellbore	JELTS 15C-19HZ PWB
Facility	SEC.19-T1N-R67W		

REPORT SETUP INFORMATION			
Projection System	NAD83 / Lambert Colorado SP, Northern Zone (501), US feet	Software System	WellArchitect® 3.0.2
North Reference	True	User	Precain
Scale	0.999963	Report Generated	5/3/2013 at 12:55:35 PM
Convergence at slot	0.37° East	Database/Source file	WellArchitectDB/JELTS_15C-19HZ_PWB.xml

WELLPATH LOCATION						
	Local coordinates		Grid coordinates		Geographic coordinates	
	North[ft]	East[ft]	Easting[US ft]	Northing[US ft]	Latitude	Longitude
Slot Location	38.24	2082.40	3159375.79	1259069.56	40°02'35.268"N	104°55'50.696"W
Facility Reference Pt			3157293.75	1259018.13	40°02'34.891"N	104°56'17.471"W
Field Reference Pt			3197771.84	1268891.29	40°04'09.600"N	104°47'36.000"W

WELLPATH DATUM			
Calculation method	Minimum curvature	ENSIGN 145 (RKB) to Facility Vertical Datum	5160.00ft
Horizontal Reference Pt	Slot	ENSIGN 145 (RKB) to Mean Sea Level	5160.00ft
Vertical Reference Pt	ENSIGN 145 (RKB)	ENSIGN 145 (RKB) to Mud Line at Slot (SLOT#24 JELTS 15C-19HZ (275'FNL & 1858'FEL, SEC.19))	5160.00ft
MD Reference Pt	ENSIGN 145 (RKB)	Section Origin	N 0.00, E 0.00 ft
Field Vertical Reference	Mean Sea Level	Section Azimuth	181.39°



Planned Wellpath Report

JELTS 15C-19HZ (PERMIT REV-1) PWP

Page 2 of 6



REFERENCE WELLPATH IDENTIFICATION

Operator	KERR-MCGEE OIL & GAS ONSHORE LP	Slot	SLOT#24 JELTS 15C-19HZ (275'FNL & 1858'FEL, SEC.19)
Area	COLORADO	Well	JELTS 15C-19HZ
Field	WELD COUNTY (KERR MCGEE)	Wellbore	JELTS 15C-19HZ PWB
Facility	SEC.19-T1N-R67W		

WELLPATH DATA (140 stations) † = interpolated/extrapolated station

MD [ft]	Inclination [°]	Azimuth [°]	TVD [ft]	Vert Sect [ft]	North [ft]	East [ft]	Latitude	Longitude	DLS [°/100ft]	Comments
0.00†	0.000	318.800	0.00	0.00	0.00	0.00	40°02'35.268"N	104°55'50.696"W	0.00	
13.00	0.000	318.800	13.00	0.00	0.00	0.00	40°02'35.268"N	104°55'50.696"W	0.00	TIE-ON
113.00†	0.000	318.800	113.00	0.00	0.00	0.00	40°02'35.268"N	104°55'50.696"W	0.00	
213.00†	0.000	318.800	213.00	0.00	0.00	0.00	40°02'35.268"N	104°55'50.696"W	0.00	
313.00†	0.000	318.800	313.00	0.00	0.00	0.00	40°02'35.268"N	104°55'50.696"W	0.00	
413.00†	0.000	318.800	413.00	0.00	0.00	0.00	40°02'35.268"N	104°55'50.696"W	0.00	
513.00†	0.000	318.800	513.00	0.00	0.00	0.00	40°02'35.268"N	104°55'50.696"W	0.00	
613.00†	0.000	318.800	613.00	0.00	0.00	0.00	40°02'35.268"N	104°55'50.696"W	0.00	
713.00†	0.000	318.800	713.00	0.00	0.00	0.00	40°02'35.268"N	104°55'50.696"W	0.00	
813.00†	0.000	318.800	813.00	0.00	0.00	0.00	40°02'35.268"N	104°55'50.696"W	0.00	
913.00†	0.000	318.800	913.00	0.00	0.00	0.00	40°02'35.268"N	104°55'50.696"W	0.00	
1013.00†	0.000	318.800	1013.00	0.00	0.00	0.00	40°02'35.268"N	104°55'50.696"W	0.00	
1113.00†	0.000	318.800	1113.00	0.00	0.00	0.00	40°02'35.268"N	104°55'50.696"W	0.00	
1200.00	0.000	318.800	1200.00	0.00	0.00	0.00	40°02'35.268"N	104°55'50.696"W	0.00	BEGIN NUDGE
1213.00†	0.260	318.800	1213.00	-0.02	0.02	-0.02	40°02'35.268"N	104°55'50.696"W	2.00	
1313.00†	2.260	318.800	1312.97	-1.64	1.68	-1.47	40°02'35.285"N	104°55'50.715"W	2.00	
1413.00†	4.260	318.800	1412.80	-5.83	5.96	-5.21	40°02'35.327"N	104°55'50.763"W	2.00	
1513.00†	6.260	318.800	1512.38	-12.58	12.85	-11.25	40°02'35.395"N	104°55'50.841"W	2.00	
1613.00†	8.260	318.800	1611.57	-21.88	22.36	-19.58	40°02'35.489"N	104°55'50.948"W	2.00	
1700.00	10.000	318.800	1697.47	-32.04	32.75	-28.67	40°02'35.592"N	104°55'51.065"W	2.00	ENS NUDGE
1713.00†	10.000	318.800	1710.27	-33.71	34.45	-30.15	40°02'35.608"N	104°55'51.084"W	0.00	
1813.00†	10.000	318.800	1808.75	-46.49	47.51	-41.59	40°02'35.738"N	104°55'51.231"W	0.00	
1913.00†	10.000	318.800	1907.23	-59.28	60.58	-53.03	40°02'35.867"N	104°55'51.378"W	0.00	
2013.00†	10.000	318.800	2005.71	-72.06	73.64	-64.47	40°02'35.996"N	104°55'51.525"W	0.00	
2113.00†	10.000	318.800	2104.19	-84.85	86.71	-75.91	40°02'36.125"N	104°55'51.672"W	0.00	
2213.00†	10.000	318.800	2202.67	-97.63	99.77	-87.34	40°02'36.254"N	104°55'51.819"W	0.00	
2313.00†	10.000	318.800	2301.15	-110.42	112.84	-98.78	40°02'36.383"N	104°55'51.966"W	0.00	
2413.00†	10.000	318.800	2399.63	-123.20	125.90	-110.22	40°02'36.512"N	104°55'52.113"W	0.00	
2513.00†	10.000	318.800	2498.11	-135.99	138.97	-121.66	40°02'36.641"N	104°55'52.260"W	0.00	
2613.00†	10.000	318.800	2596.59	-148.77	152.04	-133.10	40°02'36.770"N	104°55'52.407"W	0.00	
2713.00†	10.000	318.800	2695.08	-161.56	165.10	-144.54	40°02'36.900"N	104°55'52.554"W	0.00	
2813.00†	10.000	318.800	2793.56	-174.34	178.17	-155.97	40°02'37.029"N	104°55'52.701"W	0.00	
2870.31	10.000	318.800	2850.00	-181.67	185.66	-162.53	40°02'37.103"N	104°55'52.786"W	0.00	BEGIN DROP
2913.00†	9.146	318.800	2892.09	-186.90	191.00	-167.20	40°02'37.155"N	104°55'52.846"W	2.00	
3013.00†	7.146	318.800	2991.08	-197.33	201.66	-176.54	40°02'37.261"N	104°55'52.966"W	2.00	
3113.00†	5.146	318.800	3090.50	-205.21	209.71	-183.59	40°02'37.340"N	104°55'53.057"W	2.00	
3213.00†	3.146	318.800	3190.23	-210.53	215.15	-188.35	40°02'37.394"N	104°55'53.118"W	2.00	
3313.00†	1.146	318.800	3290.15	-213.29	217.97	-190.82	40°02'37.422"N	104°55'53.150"W	2.00	
3370.31	0.000	179.025	3347.47	-213.71	218.40	-191.20	40°02'37.426"N	104°55'53.154"W	2.00	END DROP
3413.00†	0.000	179.025	3390.15	-213.71	218.40	-191.20	40°02'37.426"N	104°55'53.154"W	0.00	
3513.00†	0.000	179.025	3490.15	-213.71	218.40	-191.20	40°02'37.426"N	104°55'53.154"W	0.00	
3613.00†	0.000	179.025	3590.15	-213.71	218.40	-191.20	40°02'37.426"N	104°55'53.154"W	0.00	
3713.00†	0.000	179.025	3690.15	-213.71	218.40	-191.20	40°02'37.426"N	104°55'53.154"W	0.00	
3813.00†	0.000	179.025	3790.15	-213.71	218.40	-191.20	40°02'37.426"N	104°55'53.154"W	0.00	
3913.00†	0.000	179.025	3890.15	-213.71	218.40	-191.20	40°02'37.426"N	104°55'53.154"W	0.00	



Planned Wellpath Report

JELTS 15C-19HZ (PERMIT REV-1) PWP

Page 3 of 6



REFERENCE WELLPATH IDENTIFICATION

Operator	KERR-MCGEE OIL & GAS ONSHORE LP	Slot	SLOT#24 JELTS 15C-19HZ (275'FNL & 1858'FEL, SEC.19)
Area	COLORADO	Well	JELTS 15C-19HZ
Field	WELD COUNTY (KERR MCGEE)	Wellbore	JELTS 15C-19HZ PWB
Facility	SEC.19-T1N-R67W		

WELLPATH DATA (140 stations) † = interpolated/extrapolated station

MD [ft]	Inclination [°]	Azimuth [°]	TVD [ft]	Vert Sect [ft]	North [ft]	East [ft]	Latitude	Longitude	DLS [°/100ft]	Comments
4013.00†	0.000	179.025	3990.15	-213.71	218.40	-191.20	40°02'37.426"N	104°55'53.154"W	0.00	
4113.00†	0.000	179.025	4090.15	-213.71	218.40	-191.20	40°02'37.426"N	104°55'53.154"W	0.00	
4213.00†	0.000	179.025	4190.15	-213.71	218.40	-191.20	40°02'37.426"N	104°55'53.154"W	0.00	
4313.00†	0.000	179.025	4290.15	-213.71	218.40	-191.20	40°02'37.426"N	104°55'53.154"W	0.00	
4413.00†	0.000	179.025	4390.15	-213.71	218.40	-191.20	40°02'37.426"N	104°55'53.154"W	0.00	
4513.00†	0.000	179.025	4490.15	-213.71	218.40	-191.20	40°02'37.426"N	104°55'53.154"W	0.00	
4613.00†	0.000	179.025	4590.15	-213.71	218.40	-191.20	40°02'37.426"N	104°55'53.154"W	0.00	
4713.00†	0.000	179.025	4690.15	-213.71	218.40	-191.20	40°02'37.426"N	104°55'53.154"W	0.00	
4813.00†	0.000	179.025	4790.15	-213.71	218.40	-191.20	40°02'37.426"N	104°55'53.154"W	0.00	
4913.00†	0.000	179.025	4890.15	-213.71	218.40	-191.20	40°02'37.426"N	104°55'53.154"W	0.00	
4932.85†	0.000	179.025	4910.00	-213.71	218.40	-191.20	40°02'37.426"N	104°55'53.154"W	0.00	SUSSEX
5013.00†	0.000	179.025	4990.15	-213.71	218.40	-191.20	40°02'37.426"N	104°55'53.154"W	0.00	
5113.00†	0.000	179.025	5090.15	-213.71	218.40	-191.20	40°02'37.426"N	104°55'53.154"W	0.00	
5213.00†	0.000	179.025	5190.15	-213.71	218.40	-191.20	40°02'37.426"N	104°55'53.154"W	0.00	
5313.00†	0.000	179.025	5290.15	-213.71	218.40	-191.20	40°02'37.426"N	104°55'53.154"W	0.00	
5413.00†	0.000	179.025	5390.15	-213.71	218.40	-191.20	40°02'37.426"N	104°55'53.154"W	0.00	
5513.00†	0.000	179.025	5490.15	-213.71	218.40	-191.20	40°02'37.426"N	104°55'53.154"W	0.00	
5613.00†	0.000	179.025	5590.15	-213.71	218.40	-191.20	40°02'37.426"N	104°55'53.154"W	0.00	
5713.00†	0.000	179.025	5690.15	-213.71	218.40	-191.20	40°02'37.426"N	104°55'53.154"W	0.00	
5813.00†	0.000	179.025	5790.15	-213.71	218.40	-191.20	40°02'37.426"N	104°55'53.154"W	0.00	
5913.00†	0.000	179.025	5890.15	-213.71	218.40	-191.20	40°02'37.426"N	104°55'53.154"W	0.00	
6013.00†	0.000	179.025	5990.15	-213.71	218.40	-191.20	40°02'37.426"N	104°55'53.154"W	0.00	
6113.00†	0.000	179.025	6090.15	-213.71	218.40	-191.20	40°02'37.426"N	104°55'53.154"W	0.00	
6213.00†	0.000	179.025	6190.15	-213.71	218.40	-191.20	40°02'37.426"N	104°55'53.154"W	0.00	
6313.00†	0.000	179.025	6290.15	-213.71	218.40	-191.20	40°02'37.426"N	104°55'53.154"W	0.00	
6413.00†	0.000	179.025	6390.15	-213.71	218.40	-191.20	40°02'37.426"N	104°55'53.154"W	0.00	
6513.00†	0.000	179.025	6490.15	-213.71	218.40	-191.20	40°02'37.426"N	104°55'53.154"W	0.00	
6613.00†	0.000	179.025	6590.15	-213.71	218.40	-191.20	40°02'37.426"N	104°55'53.154"W	0.00	
6713.00†	0.000	179.025	6690.15	-213.71	218.40	-191.20	40°02'37.426"N	104°55'53.154"W	0.00	
6813.00†	0.000	179.025	6790.15	-213.71	218.40	-191.20	40°02'37.426"N	104°55'53.154"W	0.00	
6913.00†	0.000	179.025	6890.15	-213.71	218.40	-191.20	40°02'37.426"N	104°55'53.154"W	0.00	
7013.00†	0.000	179.025	6990.15	-213.71	218.40	-191.20	40°02'37.426"N	104°55'53.154"W	0.00	
7113.00†	0.000	179.025	7090.15	-213.71	218.40	-191.20	40°02'37.426"N	104°55'53.154"W	0.00	
7213.00†	0.000	179.025	7190.15	-213.71	218.40	-191.20	40°02'37.426"N	104°55'53.154"W	0.00	
7313.00†	0.000	179.025	7290.15	-213.71	218.40	-191.20	40°02'37.426"N	104°55'53.154"W	0.00	
7339.89	0.000	179.025	7317.05	-213.71	218.40	-191.20	40°02'37.426"N	104°55'53.154"W	0.00	KOP, BUILD @ 10°/100'
7413.00†	7.311	179.025	7389.95	-209.06	213.75	-191.12	40°02'37.380"N	104°55'53.153"W	10.00	
7475.10†	13.521	179.025	7451.00	-197.85	202.53	-190.93	40°02'37.269"N	104°55'53.151"W	10.00	SHARON SPRINGS
7510.35†	17.046	179.025	7485.00	-188.56	193.24	-190.77	40°02'37.178"N	104°55'53.149"W	10.00	NIOBRARA A
7513.00†	17.311	179.025	7487.53	-187.78	192.45	-190.75	40°02'37.170"N	104°55'53.149"W	10.00	
7613.00†	27.311	179.025	7579.93	-149.90	154.55	-190.11	40°02'36.795"N	104°55'53.140"W	10.00	
7649.73†	30.984	179.025	7612.00	-132.03	136.66	-189.81	40°02'36.619"N	104°55'53.136"W	10.00	NIOBRARA B CHALK TL
7713.00†	37.311	179.025	7664.34	-96.56	101.17	-189.20	40°02'36.268"N	104°55'53.129"W	10.00	
7798.17†	45.828	179.025	7728.00	-40.15	44.71	-188.24	40°02'35.710"N	104°55'53.116"W	10.00	NIOBRARA C
7813.00†	47.311	179.025	7738.19	-29.39	33.95	-188.06	40°02'35.603"N	104°55'53.114"W	10.00	



Planned Wellpath Report

JELTS 15C-19HZ (PERMIT REV-1) PWP

Page 4 of 6



REFERENCE WELLPATH IDENTIFICATION

Operator	KERR-MCGEE OIL & GAS ONSHORE LP	Slot	SLOT#24 JELTS 15C-19HZ (275'FNL & 1858'FEL, SEC.19)
Area	COLORADO	Well	JELTS 15C-19HZ
Field	WELD COUNTY (KERR MCGEE)	Wellbore	JELTS 15C-19HZ PWB
Facility	SEC.19-TIN-R67W		

WELLPATH DATA (140 stations) † = interpolated/extrapolated station

MD [ft]	Inclination [°]	Azimuth [°]	TVD [ft]	Vert Sect [ft]	North [ft]	East [ft]	Latitude	Longitude	DLS [°/100ft]	Comments
7913.00†	57.311	179.025	7799.25	49.57	-45.07	-186.71	40°02'34.823"N	104°55'53.097"W	10.00	
8013.00†	67.311	179.025	7845.66	137.94	-133.49	-185.21	40°02'33.949"N	104°55'53.077"W	10.00	
8063.29†	72.339	179.025	7863.00	185.08	-180.68	-184.40	40°02'33.483"N	104°55'53.067"W	10.00	FORT HAYS
8113.00†	77.311	179.025	7876.01	233.01	-228.63	-183.59	40°02'33.009"N	104°55'53.057"W	10.00	
8172.13†	83.223	179.025	7886.00	291.20	-286.87	-182.60	40°02'32.433"N	104°55'53.044"W	10.00	CODELL
8213.00†	87.311	179.025	7889.37	331.90	-327.59	-181.90	40°02'32.031"N	104°55'53.035"W	10.00	
8239.89	90.000	179.025	7890.00	358.76	-354.47	-181.45	40°02'31.765"N	104°55'53.029"W	10.00	LANDING POINT
8313.00†	90.000	179.025	7890.00	431.80	-427.57	-180.20	40°02'31.043"N	104°55'53.013"W	0.00	
8413.00†	90.000	179.025	7890.00	531.72	-527.55	-178.50	40°02'30.055"N	104°55'52.991"W	0.00	
8513.00†	90.000	179.025	7890.00	631.63	-627.54	-176.80	40°02'29.066"N	104°55'52.969"W	0.00	
8613.00†	90.000	179.025	7890.00	731.55	-727.52	-175.10	40°02'28.078"N	104°55'52.947"W	0.00	
8713.00†	90.000	179.025	7890.00	831.46	-827.51	-173.40	40°02'27.090"N	104°55'52.925"W	0.00	
8813.00†	90.000	179.025	7890.00	931.38	-927.50	-171.70	40°02'26.102"N	104°55'52.904"W	0.00	
8913.00†	90.000	179.025	7890.00	1031.29	-1027.48	-169.99	40°02'25.114"N	104°55'52.882"W	0.00	
9013.00†	90.000	179.025	7890.00	1131.21	-1127.47	-168.29	40°02'24.126"N	104°55'52.860"W	0.00	
9113.00†	90.000	179.025	7890.00	1231.12	-1227.45	-166.59	40°02'23.138"N	104°55'52.838"W	0.00	
9213.00†	90.000	179.025	7890.00	1331.04	-1327.44	-164.89	40°02'22.150"N	104°55'52.816"W	0.00	
9313.00†	90.000	179.025	7890.00	1430.95	-1427.42	-163.19	40°02'21.162"N	104°55'52.794"W	0.00	
9413.00†	90.000	179.025	7890.00	1530.87	-1527.41	-161.49	40°02'20.174"N	104°55'52.772"W	0.00	
9513.00†	90.000	179.025	7890.00	1630.78	-1627.39	-159.79	40°02'19.186"N	104°55'52.750"W	0.00	
9613.00†	90.000	179.025	7890.00	1730.70	-1727.38	-158.09	40°02'18.198"N	104°55'52.728"W	0.00	
9713.00†	90.000	179.025	7890.00	1830.61	-1827.37	-156.38	40°02'17.210"N	104°55'52.707"W	0.00	
9813.00†	90.000	179.025	7890.00	1930.53	-1927.35	-154.68	40°02'16.221"N	104°55'52.685"W	0.00	
9913.00†	90.000	179.025	7890.00	2030.44	-2027.34	-152.98	40°02'15.233"N	104°55'52.663"W	0.00	
10013.00†	90.000	179.025	7890.00	2130.36	-2127.32	-151.28	40°02'14.245"N	104°55'52.641"W	0.00	
10113.00†	90.000	179.025	7890.00	2230.27	-2227.31	-149.58	40°02'13.257"N	104°55'52.619"W	0.00	
10213.00†	90.000	179.025	7890.00	2330.19	-2327.29	-147.88	40°02'12.269"N	104°55'52.597"W	0.00	
10313.00†	90.000	179.025	7890.00	2430.10	-2427.28	-146.18	40°02'11.281"N	104°55'52.575"W	0.00	
10413.00†	90.000	179.025	7890.00	2530.02	-2527.26	-144.48	40°02'10.293"N	104°55'52.553"W	0.00	
10513.00†	90.000	179.026	7890.00	2629.93	-2627.25	-142.78	40°02'09.305"N	104°55'52.532"W	0.00	
10613.00†	90.000	179.026	7890.00	2729.85	-2727.24	-141.08	40°02'08.317"N	104°55'52.510"W	0.00	
10713.00†	90.000	179.026	7890.00	2829.76	-2827.22	-139.38	40°02'07.329"N	104°55'52.488"W	0.00	
10813.00†	90.000	179.026	7890.00	2929.68	-2927.21	-137.68	40°02'06.341"N	104°55'52.466"W	0.00	
10913.00†	90.000	179.026	7890.00	3029.60	-3027.19	-135.98	40°02'05.353"N	104°55'52.444"W	0.00	
11013.00†	90.000	179.026	7890.00	3129.51	-3127.18	-134.27	40°02'04.364"N	104°55'52.422"W	0.00	
11113.00†	90.000	179.026	7890.00	3229.43	-3227.16	-132.57	40°02'03.376"N	104°55'52.400"W	0.00	
11213.00†	90.000	179.026	7890.00	3329.34	-3327.15	-130.87	40°02'02.388"N	104°55'52.379"W	0.00	
11313.00†	90.000	179.026	7890.00	3429.26	-3427.13	-129.17	40°02'01.400"N	104°55'52.357"W	0.00	
11413.00†	90.000	179.026	7890.00	3529.17	-3527.12	-127.47	40°02'00.412"N	104°55'52.335"W	0.00	
11513.00†	90.000	179.026	7890.00	3629.09	-3627.10	-125.77	40°01'59.424"N	104°55'52.313"W	0.00	
11613.00†	90.000	179.026	7890.00	3729.00	-3727.09	-124.07	40°01'58.436"N	104°55'52.291"W	0.00	
11713.00†	90.000	179.026	7890.00	3828.92	-3827.08	-122.37	40°01'57.448"N	104°55'52.269"W	0.00	
11813.00†	90.000	179.026	7890.00	3928.83	-3927.06	-120.67	40°01'56.460"N	104°55'52.247"W	0.00	
11913.00†	90.000	179.026	7890.00	4028.75	-4027.05	-118.97	40°01'55.472"N	104°55'52.225"W	0.00	
12013.00†	90.000	179.026	7890.00	4128.66	-4127.03	-117.27	40°01'54.484"N	104°55'52.204"W	0.00	



Planned Wellpath Report

JELTS 15C-19HZ (PERMIT REV-1) PWP

Page 5 of 6



REFERENCE WELLPATH IDENTIFICATION

Operator	KERR-MCGEE OIL & GAS ONSHORE LP	Slot	SLOT#24 JELTS 15C-19HZ (275'FNL & 1858'FEL, SEC.19)
Area	COLORADO	Well	JELTS 15C-19HZ
Field	WELD COUNTY (KERR MCGEE)	Wellbore	JELTS 15C-19HZ PWB
Facility	SEC.19-T1N-R67W		

WELLPATH DATA (140 stations) † = interpolated/extrapolated station

MD [ft]	Inclination [°]	Azimuth [°]	TVD [ft]	Vert Sect [ft]	North [ft]	East [ft]	Latitude	Longitude	DLS [°/100ft]	Comments
12113.00†	90.000	179.026	7890.00	4228.58	-4227.02	-115.57	40°01'53.496"N	104°55'52.182"W	0.00	
12213.00†	90.000	179.026	7890.00	4328.49	-4327.00	-113.87	40°01'52.507"N	104°55'52.160"W	0.00	
12313.00†	90.000	179.026	7890.00	4428.41	-4426.99	-112.17	40°01'51.519"N	104°55'52.138"W	0.00	
12413.00†	90.000	179.026	7890.00	4528.32	-4526.97	-110.47	40°01'50.531"N	104°55'52.116"W	0.00	
12435.64	90.000	179.026	7890.00 ¹	4550.94	-4549.61	-110.09	40°01'50.308"N	104°55'52.111"W	0.00	TOTAL DEPTH

HOLE & CASING SECTIONS - Ref Wellbore: JELTS 15C-19HZ PWB Ref Wellpath: JELTS 15C-19HZ (PERMIT REV-1) PWP

String/Diameter	Start MD [ft]	End MD [ft]	Interval [ft]	Start TVD [ft]	End TVD [ft]	Start N/S [ft]	Start E/W [ft]	End N/S [ft]	End E/W [ft]
13.5in Open Hole	13.00	900.00	887.00	13.00	900.00	0.00	0.00	0.00	0.00
9.625in Casing Surface	13.00	900.00	887.00	13.00	900.00	0.00	0.00	0.00	0.00
8.75in Open Hole	900.00	8239.89	7339.89	900.00	7890.00	0.00	0.00	-354.47	-181.45
7in Casing Intermediate	13.00	8239.89	8226.89	13.00	7890.00	0.00	0.00	-354.47	-181.45
6.125in Open Hole	8239.89	12435.64	4195.75	7890.00	7890.00	-354.47	-181.45	-4549.61	-110.09
4.5in Casing Production	13.00	12435.64	12422.64	13.00	7890.00	0.00	0.00	-4549.61	-110.09

TARGETS

Name	MD [ft]	TVD [ft]	North [ft]	East [ft]	Grid East [US ft]	Grid North [US ft]	Latitude	Longitude	Shape
SECTION 19 LINES		27.00	-38.16	-2082.33	3157293.83	1259018.03	40°02'34.890"N	104°56'17.470"W	polygon
1) JELTS 15C-19HZ BHL ON PLAT REV-1 (460'FSL & 2050'FEL, SEC.19)	12435.64	7890.00	-4549.61	-110.09	3159294.92	1254519.51	40°01'50.308"N	104°55'52.111"W	point
SEC. 19 HARDLINES (460' SETBACKS)		8027.00	-38.16	-2082.33	3157293.83	1259018.03	40°02'34.890"N	104°56'17.470"W	polygon

SURVEY PROGRAM - Ref Wellbore: JELTS 15C-19HZ PWB Ref Wellpath: JELTS 15C-19HZ (PERMIT REV-1) PWP

Start MD [ft]	End MD [ft]	Positional Uncertainty Model	Log Name/Comment	Wellbore
13.00	8239.89	NaviTrak (Standard)		JELTS 15C-19HZ PWB
8239.89	12435.64	OnTrak (Standard)		JELTS 15C-19HZ PWB



Planned Wellpath Report

JELTS 15C-19HZ (PERMIT REV-1) PWP

Page 6 of 6



REFERENCE WELLPATH IDENTIFICATION			
Operator	KERR-MCGEE OIL & GAS ONSHORE LP	Slot	SLOT#24 JELTS 15C-19HZ (275'FNL & 1858'FEL, SEC.19)
Area	COLORADO	Well	JELTS 15C-19HZ
Field	WELD COUNTY (KERR MCGEE)	Wellbore	JELTS 15C-19HZ PWB
Facility	SEC.19-T1N-R67W		

WELLPATH COMMENTS				
MD [ft]	Inclination [°]	Azimuth [°]	TVD [ft]	Comment
4932.85	0.000	179.025	4910.00	SUSSEX
7475.10	13.521	179.025	7451.00	SHARON SPRINGS
7510.35	17.046	179.025	7485.00	NIOBRARA A
7649.73	30.984	179.025	7612.00	NIOBRARA B CHALK TL
7798.17	45.828	179.025	7728.00	NIOBRARA C
8063.29	72.339	179.025	7863.00	FORT HAYS
8172.13	83.223	179.025	7886.00	CODELL