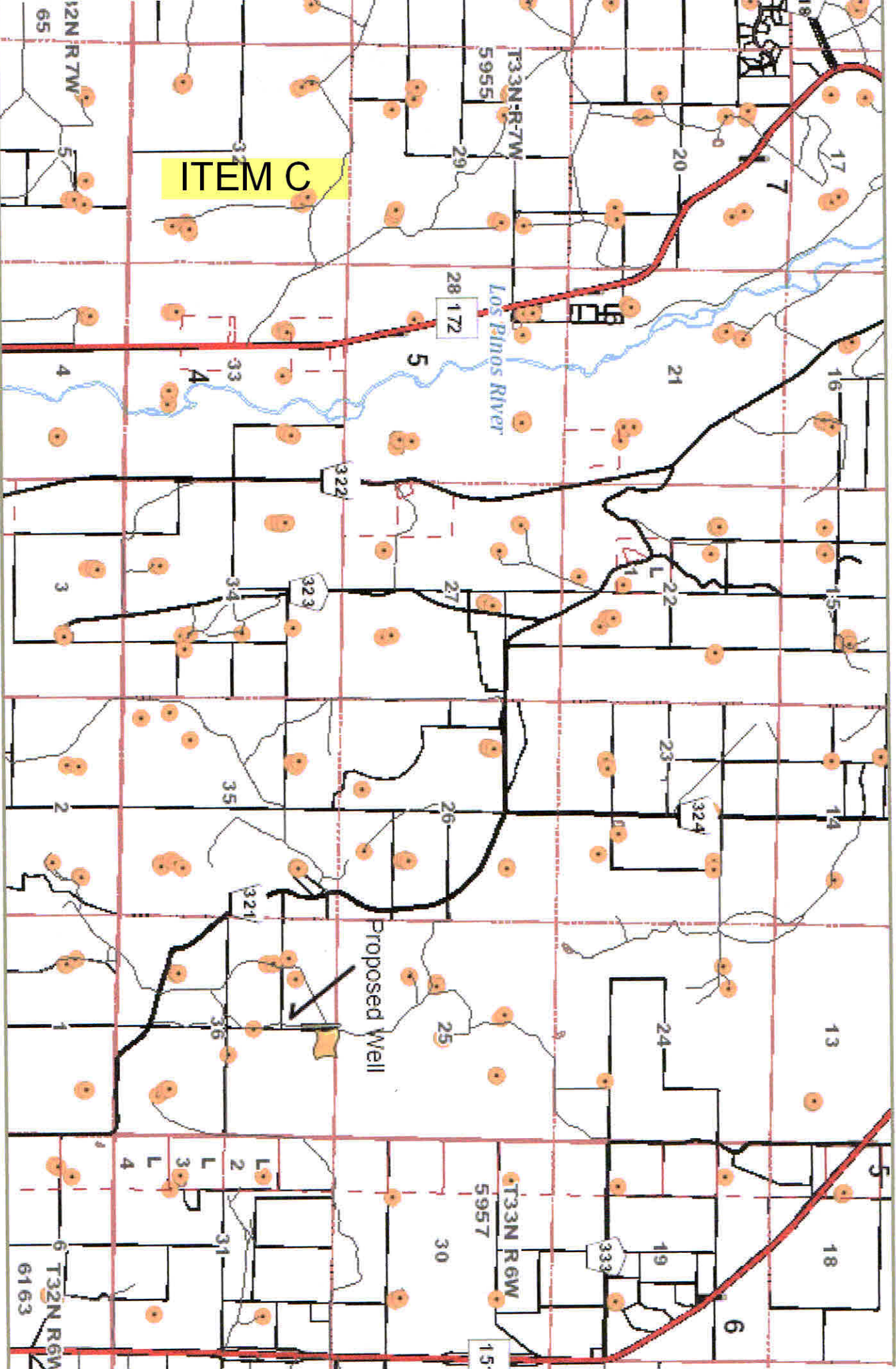


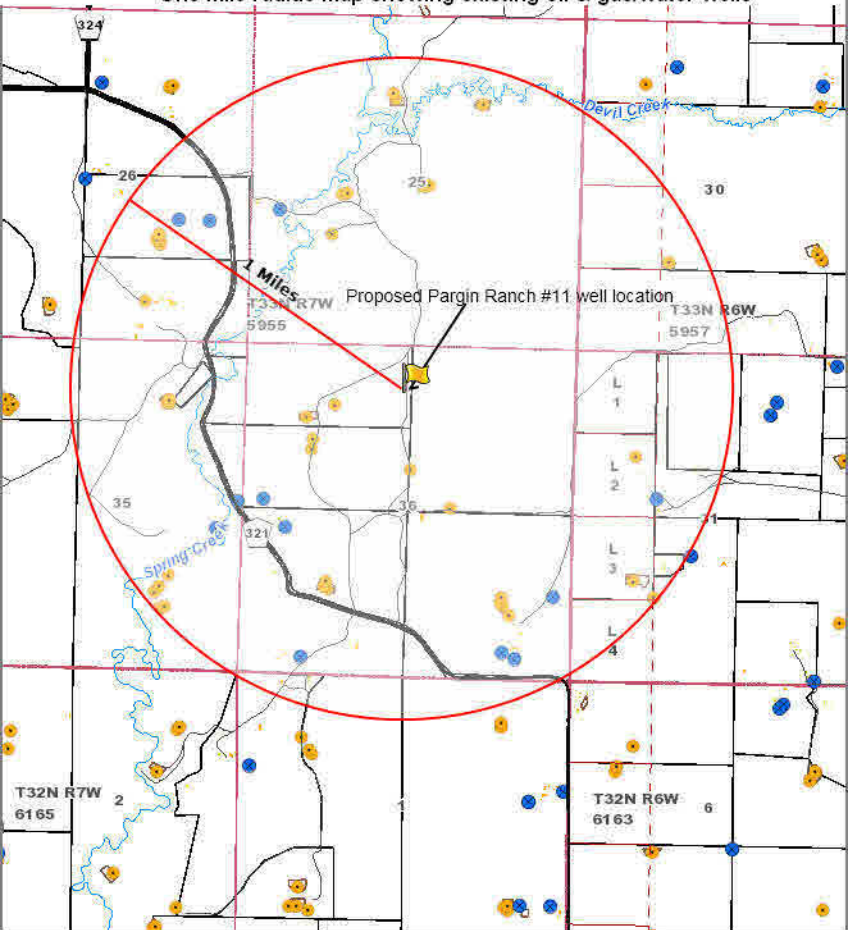
# Location of Existing Wells



The information is provided as is without warranty of any kind, either express or implied, including but not limited to the implied warranties of merchantability and fitness for a particular purpose. In no event shall La Plata County be liable for any damages whatsoever including direct, indirect, consequential, loss of business profits or special damages.

Map Scale 1 inch = 0 4/25/2013

McElvain Energy, Inc-Proposed Pargin Ranch #11 well location.  
One mile radius map showing existing oil & gas/water wells



Disclaimer: The information is provided as is without warranty of any kind, either express or implied, including but not limited to the implied warranties of merchantability and fitness for a particular purpose. In no event shall La Plata County be liable for any damages whatsoever including direct, indirect, incidental, consequential, loss of business profits or special damages.

Map Scale  
1 inch = 1959 feet  
5/6/2013