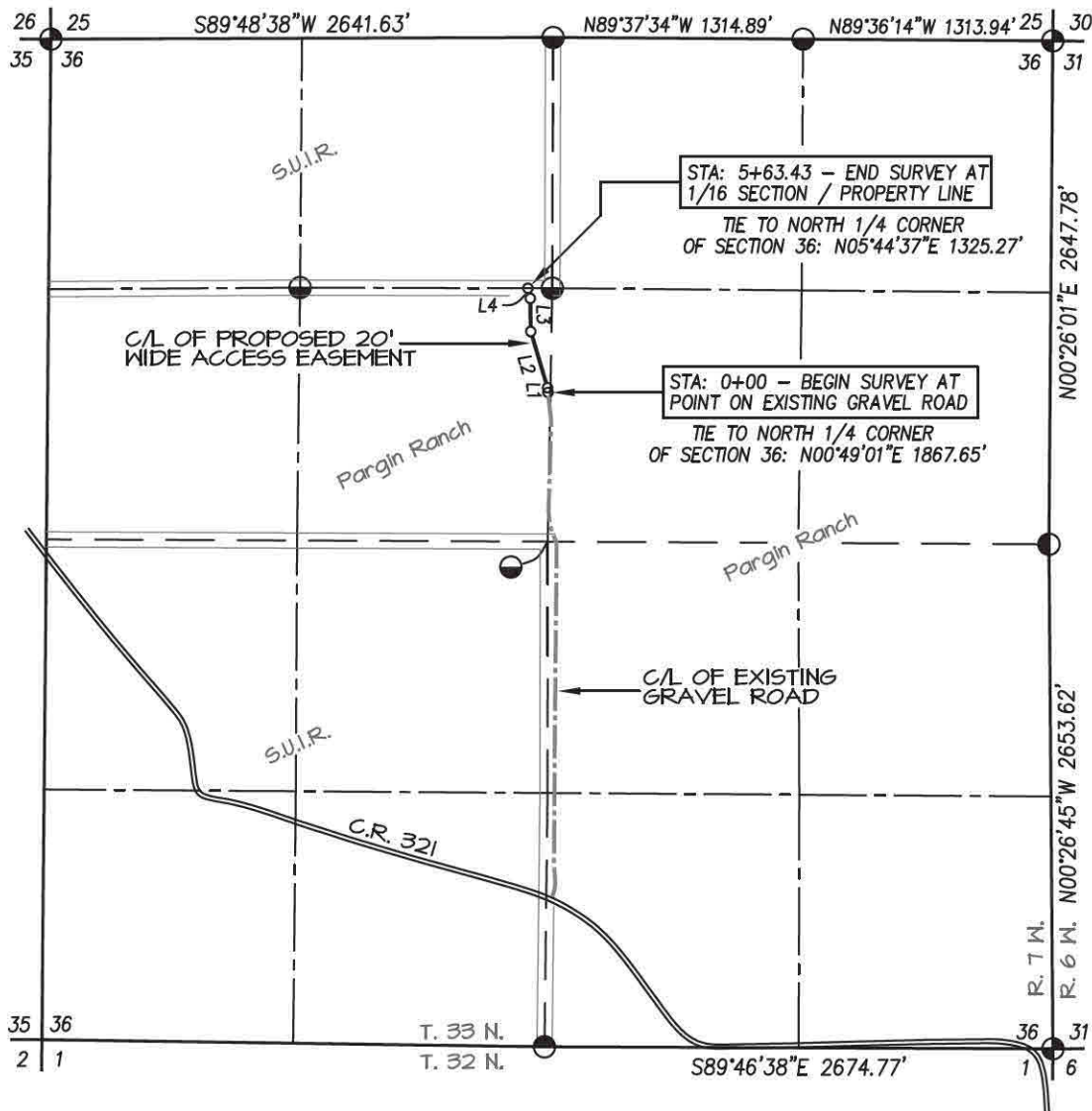


**McELVAIN OIL & GAS PROPERTIES, INC. PARGIN RANCH #11
PROPOSED ACCESS ROAD LOCATED IN THE SE/4 NW/4 OF SECTION 36,
T33N, R7W, N.M.P.M., LA PLATA COUNTY, COLORADO**

ITEM B

GRAPHIC SCALE 1"=1000'
0 1000 2000



BASIS OF BEARING:
REAL-TIME KINEMATIC GPS SURVEY
SOLUTION OF CO SOUTH STATE
PLANE (NAD 83) COORDINATE GRID
WITH AN APPLIED ROTATION OF -0°15' 30\"/>

OWNERSHIP	STATION	FEET/RODS
Pargin Ranch	0+00.0 TO 5+63.43	563.43 / 34.15

LINE TABLE		
LINE	BEARING	LENGTH
L1	N06°27'11\"W	25.59'
L2	N16°37'08\"W	308.65'
L3	N00°38'31\"W	173.66'
L4	N13°26'34\"W	55.53'

⊕ and ⊙ denote found
3-1/4" S.U.I.R. Alum. Cap.



I, KENNETH E. REA, A REGISTERED PROFESSIONAL LAND SURVEYOR IN THE STATE OF COLORADO, DO HEREBY CERTIFY THAT THE SURVEY REPRESENTED BY THIS PLAT WAS MADE UNDER MY DIRECT SUPERVISION AND THAT THIS PLAT ACCURATELY REPRESENTS THIS SURVEY TO THE BEST OF MY KNOWLEDGE AND BELIEF.

DRAWN BY: K.R.	SURVEYED: 7/3/12	CHECKED BY: K.R.	DRAWN: 8/30/12	FILE NO. MCV234C	JOB NO. MCV23	PREPARED FOR:
						McELVAIN OIL & GAS PROPERTIES, INC.
						NORTHSTAR SURVEYING & MAPPING, INC.
						768 County Rd. 308 DURANGO, CO. 81303 (970) 385-0851

McELVAIN OIL & GAS PROPERTIES, INC. PARGIN RANCH #11 - ACCESS ROAD

- LEGAL DESCRIPTION -

An access easement being twenty feet (20') wide located in the SE/4 NW/4 of Section 36, Township 33 North, Range 7 West, N.M.P.M., La Plata County, Colorado.

Said easement lying ten feet (10') on each side of the following described centerline:

Beginning at a point on an existing gravel road, whence the North 1/4 corner of Section 36, being a 3-1/4" SUIR aluminum cap bears N00°49'01"E a distance of 1867.65 feet.

Thence N06°27'11"W a distance of 25.59 feet,

Thence N16°37'08"W a distance of 308.65 feet,

Thence N00°38'31"W a distance of 173.66 feet,

Thence N13°26'34"W a distance of 55.53 feet, ending at a point on the south line of the NE/4 NW/4 of said Section 36, whence the North 1/4 corner of Section 36 being a 3-1/4" SUIR aluminum cap bears: N05°44'37"E a distance of 1325.27 feet.

Described easement being 563.43 feet in length & containing 0.26 acres, more or less.

PREPARED BY:

KENNETH E. REA P.L.S. #31941

