

# KERR-MCGEE OIL & GAS ONSHORE LP

Location: COLORADO Slot: SLOT#25 JELTS 36N-19HZ (275'FNL & 1888'FEL, SEC.19)

Field: WELD COUNTY (KERR MCGEE) Well: JELTS 36N-19HZ

Facility: SEC.19-T1N-R67W Wellbore: JELTS 36N-19HZ PWB

Plot reference wellpath is JELTS 36N-19HZ (PERMIT REV-1) PWP

True vertical depths are referenced to ENSIGN 145 (RKB)	Grid System: NAD83 / Lambert Colorado SP, Northern Zone (501), US feet
Measured depths are referenced to ENSIGN 145 (RKB)	North Reference: True north
ENGIN 145 (RKB) to Mean Sea Level: 5193 feet	Scale: True distance
Mean Sea Level to Mud line (At Slot: SLOT#25 JELTS 36N-19HZ (275'FNL & 1888'FEL, SEC.19): 0 feet	Depths are in feet
Coordinates are in feet referenced to Slot	Created by: precain on 5/3/2013

## Location Information

Facility Name			Grid East (US ft)	Grid North (US ft)	Latitude	Longitude
SEC.19-T1N-R67W			3157293.749	1259018.130	40°02'34.891"N	104°56'17.471"W
Slot	Local N (ft)	Local E (ft)	Grid East (US ft)	Grid North (US ft)	Latitude	Longitude
SLOT#25 JELTS 36N-19HZ (275'FNL & 1888'FEL, SEC.19)	38.64	2052.15	3159345.535	1259069.768	40°02'35.272"N	104°55'51.085"W
ENGIN 145 (RKB) to Mud line (At Slot: SLOT#25 JELTS 36N-19HZ (275'FNL & 1888'FEL, SEC.19))					5160R	
Mean Sea Level to Mud line (At Slot: SLOT#25 JELTS 36N-19HZ (275'FNL & 1888'FEL, SEC.19))					0R	
ENGIN 145 (RKB) to Mean Sea Level					5160R	

## Survey Program

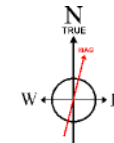
Start MD (ft)	End MD (ft)	Tool	Model	Log Name/Comment	Wellbore
13.00	8028.29	NaviTrak	NaviTrak (Standard)		JELTS 36N-19HZ PWB
8028.29	12224.71	OnTrak	OnTrak (Standard)		JELTS 36N-19HZ PWB

## Well Profile Data

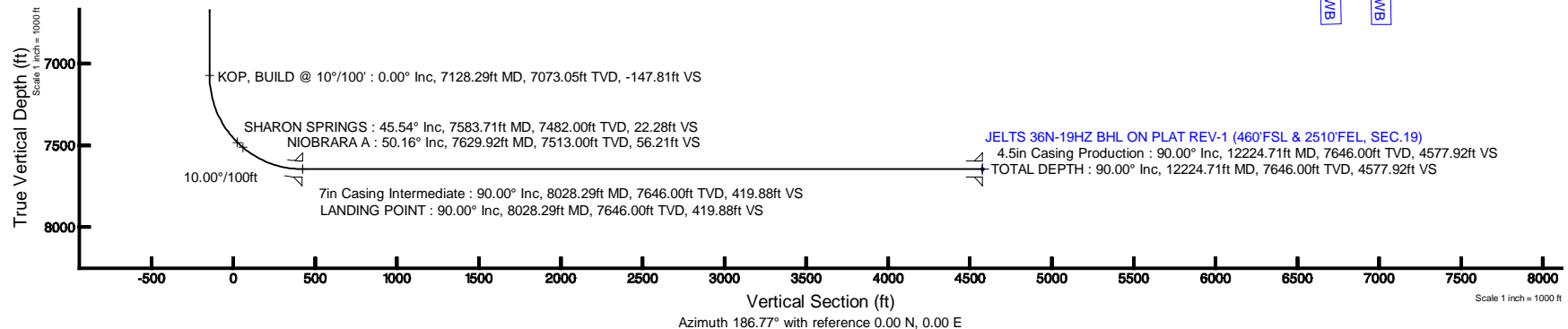
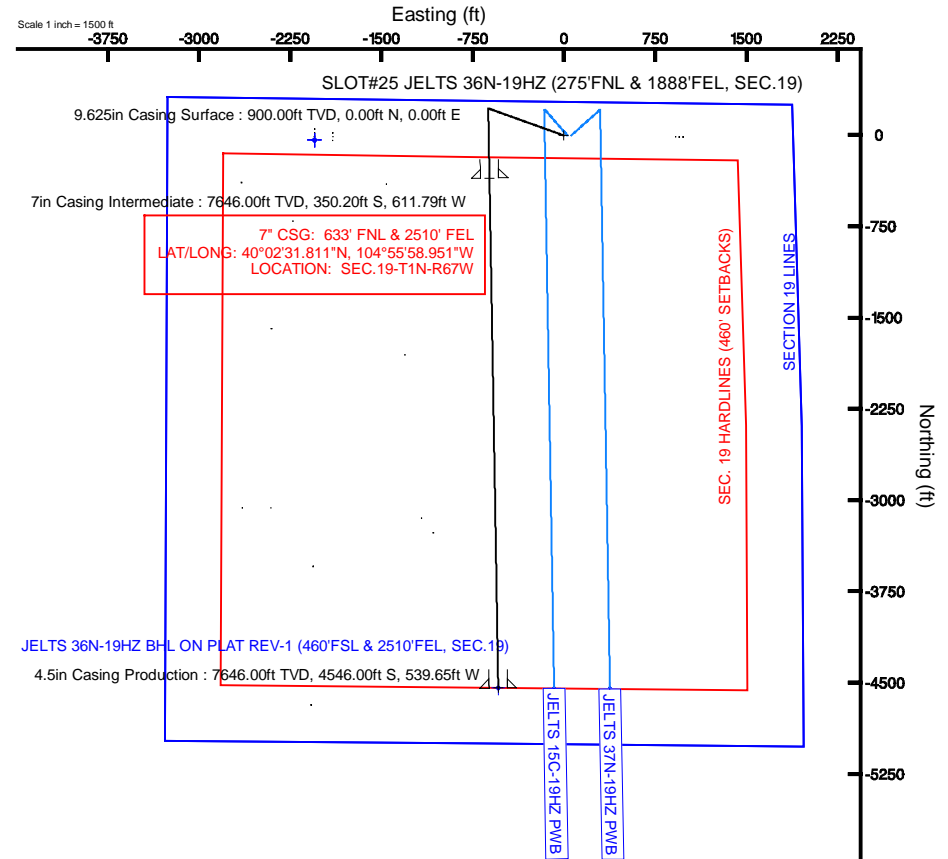
Design Comment	MD (ft)	Inc (°)	Az (°)	TVD (ft)	Local N (ft)	Local E (ft)	DLS (°/100ft)	VS (ft)
TIE-ON	13.00	0.000		289.700	13.00	0.00	0.00	0.00
BEGIN NUDGE	1100.00	0.000	289.700	1100.00	0.00	0.00	0.00	0.00
END NUDGE	1600.00	10.000	289.700	1597.47	14.67	-40.98	2.00	-9.74
BEGIN DROP	4902.71	10.000	289.700	4850.00	208.00	-580.92	0.00	-138.07
END DROP	5402.71	0.000	178.990	5347.47	222.67	-621.89	2.00	-147.81
KOP, BUILD @ 10°/100'	7128.29	0.000	178.990	7073.05	222.67	-621.89	0.00	-147.81
LANDING POINT	8028.29	90.000	178.990	7646.00	-350.20	-611.79	10.00	419.88
TOTAL DEPTH	12224.71	90.000	179.040	7646.00	-4546.00	-539.65	0.00	4577.92

## Targets

Name	MD (ft)	TVD (ft)	Local N (ft)	Local E (ft)	Grid East (US ft)	Grid North (US ft)	Latitude	Longitude
SECTION 19 LINES	27.00	-38.57	-2052.08	3157293.83	1259018.03	40°02'34.890"N	104°56'17.470"W	
JELTS 36N-19HZ BHL ON PLAT REV-1 (460'FSL & 2510'FSL, SEC.19)	12224.71	7646.00	-4546.00	-539.65	3158836.09	1254620.57	40°01'50.347"N	104°55'58.022"W
SEC. 19 HARDLINES (460' SETBACKS)	8027.00	-38.57	-2052.08	3157293.83	1259018.03	40°02'34.890"N	104°56'17.470"W	



BGGM (1945.0 to 2014.0) Dip: 66.64° Field: 52627.2 nT  
Magnetic North is 8.72 degrees East of True North (at 5/3/2013)  
To correct azimuth from Magnetic to True add 8.72 degrees  
For example: if the Magnetic North Azimuth = 90 degs, then the True North Azimuth = 90 + 8.72 = 98.72





# Planned Wellpath Report

JELTS 36N-19HZ (PERMIT REV-1) PWP

Page 1 of 6



REFERENCE WELLPATH IDENTIFICATION			
Operator	KERR-MCGEE OIL & GAS ONSHORE LP	Slot	SLOT#25 JELTS 36N-19HZ (275'FNL & 1888'FEL, SEC.19)
Area	COLORADO	Well	JELTS 36N-19HZ
Field	WELD COUNTY (KERR MCGEE)	Wellbore	JELTS 36N-19HZ PWB
Facility	SEC.19-T1N-R67W		

REPORT SETUP INFORMATION			
Projection System	NAD83 / Lambert Colorado SP, Northern Zone (501), US feet	Software System	WellArchitect® 3.0.2
North Reference	True	User	Precain
Scale	0.999963	Report Generated	5/3/2013 at 1:19:11 PM
Convergence at slot	0.37° East	Database/Source file	WellArchitectDB/JELTS_36N-19HZ_PWB.xml

WELLPATH LOCATION						
	Local coordinates		Grid coordinates		Geographic coordinates	
	North[ft]	East[ft]	Easting[US ft]	Northing[US ft]	Latitude	Longitude
Slot Location	38.64	2052.15	3159345.54	1259069.77	40°02'35.272"N	104°55'51.085"W
Facility Reference Pt			3157293.75	1259018.13	40°02'34.891"N	104°56'17.471"W
Field Reference Pt			3197771.84	1268891.29	40°04'09.600"N	104°47'36.000"W

WELLPATH DATUM			
Calculation method	Minimum curvature	ENSIGN 145 (RKB) to Facility Vertical Datum	5160.00ft
Horizontal Reference Pt	Slot	ENSIGN 145 (RKB) to Mean Sea Level	5160.00ft
Vertical Reference Pt	ENSIGN 145 (RKB)	ENSIGN 145 (RKB) to Mud Line at Slot (SLOT#25 JELTS 36N-19HZ (275'FNL & 1888'FEL, SEC.19))	5160.00ft
MD Reference Pt	ENSIGN 145 (RKB)	Section Origin	N 0.00, E 0.00 ft
Field Vertical Reference	Mean Sea Level	Section Azimuth	186.77°



# Planned Wellpath Report

JELTS 36N-19HZ (PERMIT REV-1) PWP  
Page 2 of 6



## REFERENCE WELLPATH IDENTIFICATION

Operator	KERR-MCGEE OIL & GAS ONSHORE LP	Slot	SLOT#25 JELTS 36N-19HZ (275'FNL & 1888'FEL, SEC.19)
Area	COLORADO	Well	JELTS 36N-19HZ
Field	WELD COUNTY (KERR MCGEE)	Wellbore	JELTS 36N-19HZ PWB
Facility	SEC.19-T1N-R67W		

## WELLPATH DATA (134 stations) † = interpolated/extrapolated station

MD [ft]	Inclination [°]	Azimuth [°]	TVD [ft]	Vert Sect [ft]	North [ft]	East [ft]	Latitude	Longitude	DLS [°/100ft]	Comments
0.00†	0.000	289.700	0.00	0.00	0.00	0.00	40°02'35.272"N	104°55'51.085"W	0.00	
13.00	0.000	289.700	13.00	0.00	0.00	0.00	40°02'35.272"N	104°55'51.085"W	0.00	TIE-ON
113.00†	0.000	289.700	113.00	0.00	0.00	0.00	40°02'35.272"N	104°55'51.085"W	0.00	
213.00†	0.000	289.700	213.00	0.00	0.00	0.00	40°02'35.272"N	104°55'51.085"W	0.00	
313.00†	0.000	289.700	313.00	0.00	0.00	0.00	40°02'35.272"N	104°55'51.085"W	0.00	
413.00†	0.000	289.700	413.00	0.00	0.00	0.00	40°02'35.272"N	104°55'51.085"W	0.00	
513.00†	0.000	289.700	513.00	0.00	0.00	0.00	40°02'35.272"N	104°55'51.085"W	0.00	
613.00†	0.000	289.700	613.00	0.00	0.00	0.00	40°02'35.272"N	104°55'51.085"W	0.00	
713.00†	0.000	289.700	713.00	0.00	0.00	0.00	40°02'35.272"N	104°55'51.085"W	0.00	
813.00†	0.000	289.700	813.00	0.00	0.00	0.00	40°02'35.272"N	104°55'51.085"W	0.00	
913.00†	0.000	289.700	913.00	0.00	0.00	0.00	40°02'35.272"N	104°55'51.085"W	0.00	
1013.00†	0.000	289.700	1013.00	0.00	0.00	0.00	40°02'35.272"N	104°55'51.085"W	0.00	
1100.00	0.000	289.700	1100.00	0.00	0.00	0.00	40°02'35.272"N	104°55'51.085"W	0.00	BEGIN NUDGE
1113.00†	0.260	289.700	1113.00	-0.01	0.01	-0.03	40°02'35.272"N	104°55'51.085"W	2.00	
1213.00†	2.260	289.700	1212.97	-0.50	0.75	-2.10	40°02'35.279"N	104°55'51.112"W	2.00	
1313.00†	4.260	289.700	1312.80	-1.77	2.67	-7.45	40°02'35.298"N	104°55'51.181"W	2.00	
1413.00†	6.260	289.700	1412.38	-3.82	5.76	-16.08	40°02'35.329"N	104°55'51.292"W	2.00	
1513.00†	8.260	289.700	1511.57	-6.65	10.02	-27.98	40°02'35.371"N	104°55'51.445"W	2.00	
1600.00	10.000	289.700	1597.47	-9.74	14.67	-40.98	40°02'35.417"N	104°55'51.612"W	2.00	END NUDGE
1613.00†	10.000	289.700	1610.27	-10.24	15.43	-43.10	40°02'35.425"N	104°55'51.639"W	0.00	
1713.00†	10.000	289.700	1708.75	-14.13	21.29	-59.45	40°02'35.482"N	104°55'51.849"W	0.00	
1813.00†	10.000	289.700	1807.23	-18.02	27.14	-75.80	40°02'35.540"N	104°55'52.060"W	0.00	
1913.00†	10.000	289.700	1905.71	-21.90	32.99	-92.15	40°02'35.598"N	104°55'52.270"W	0.00	
2013.00†	10.000	289.700	2004.19	-25.79	38.85	-108.49	40°02'35.656"N	104°55'52.480"W	0.00	
2113.00†	10.000	289.700	2102.67	-29.67	44.70	-124.84	40°02'35.714"N	104°55'52.690"W	0.00	
2213.00†	10.000	289.700	2201.15	-33.56	50.55	-141.19	40°02'35.772"N	104°55'52.900"W	0.00	
2313.00†	10.000	289.700	2299.63	-37.44	56.41	-157.54	40°02'35.829"N	104°55'53.111"W	0.00	
2413.00†	10.000	289.700	2398.11	-41.33	62.26	-173.89	40°02'35.887"N	104°55'53.321"W	0.00	
2513.00†	10.000	289.700	2496.59	-45.21	68.11	-190.24	40°02'35.945"N	104°55'53.531"W	0.00	
2613.00†	10.000	289.700	2595.08	-49.10	73.97	-206.59	40°02'36.003"N	104°55'53.741"W	0.00	
2713.00†	10.000	289.700	2693.56	-52.99	79.82	-222.93	40°02'36.061"N	104°55'53.951"W	0.00	
2813.00†	10.000	289.700	2792.04	-56.87	85.68	-239.28	40°02'36.119"N	104°55'54.162"W	0.00	
2913.00†	10.000	289.700	2890.52	-60.76	91.53	-255.63	40°02'36.176"N	104°55'54.372"W	0.00	
3013.00†	10.000	289.700	2989.00	-64.64	97.38	-271.98	40°02'36.234"N	104°55'54.582"W	0.00	
3113.00†	10.000	289.700	3087.48	-68.53	103.24	-288.33	40°02'36.292"N	104°55'54.792"W	0.00	
3213.00†	10.000	289.700	3185.96	-72.41	109.09	-304.68	40°02'36.350"N	104°55'55.002"W	0.00	
3313.00†	10.000	289.700	3284.44	-76.30	114.94	-321.02	40°02'36.408"N	104°55'55.213"W	0.00	
3413.00†	10.000	289.700	3382.92	-80.18	120.80	-337.37	40°02'36.466"N	104°55'55.423"W	0.00	
3513.00†	10.000	289.700	3481.40	-84.07	126.65	-353.72	40°02'36.524"N	104°55'55.633"W	0.00	
3613.00†	10.000	289.700	3579.88	-87.96	132.50	-370.07	40°02'36.581"N	104°55'55.843"W	0.00	
3713.00†	10.000	289.700	3678.36	-91.84	138.36	-386.42	40°02'36.639"N	104°55'56.053"W	0.00	
3813.00†	10.000	289.700	3776.84	-95.73	144.21	-402.77	40°02'36.697"N	104°55'56.264"W	0.00	
3913.00†	10.000	289.700	3875.33	-99.61	150.06	-419.12	40°02'36.755"N	104°55'56.474"W	0.00	
4013.00†	10.000	289.700	3973.81	-103.50	155.92	-435.46	40°02'36.813"N	104°55'56.684"W	0.00	
4113.00†	10.000	289.700	4072.29	-107.38	161.77	-451.81	40°02'36.871"N	104°55'56.894"W	0.00	



# Planned Wellpath Report

JELTS 36N-19HZ (PERMIT REV-1) PWP

Page 3 of 6



## REFERENCE WELLPATH IDENTIFICATION

Operator	KERR-MCGEE OIL & GAS ONSHORE LP	Slot	SLOT#25 JELTS 36N-19HZ (275'FNL & 1888'FEL, SEC.19)
Area	COLORADO	Well	JELTS 36N-19HZ
Field	WELD COUNTY (KERR MCGEE)	Wellbore	JELTS 36N-19HZ PWB
Facility	SEC.19-T1N-R67W		

## WELLPATH DATA (134 stations) † = interpolated/extrapolated station

MD [ft]	Inclination [°]	Azimuth [°]	TVD [ft]	Vert Sect [ft]	North [ft]	East [ft]	Latitude	Longitude	DLS [°/100ft]	Comments
4213.00†	10.000	289.700	4170.77	-111.27	167.63	-468.16	40°02'36.928"N	104°55'57.105"W	0.00	
4313.00†	10.000	289.700	4269.25	-115.16	173.48	-484.51	40°02'36.986"N	104°55'57.315"W	0.00	
4413.00†	10.000	289.700	4367.73	-119.04	179.33	-500.86	40°02'37.044"N	104°55'57.525"W	0.00	
4513.00†	10.000	289.700	4466.21	-122.93	185.19	-517.21	40°02'37.102"N	104°55'57.735"W	0.00	
4613.00†	10.000	289.700	4564.69	-126.81	191.04	-533.55	40°02'37.160"N	104°55'57.945"W	0.00	
4713.00†	10.000	289.700	4663.17	-130.70	196.89	-549.90	40°02'37.218"N	104°55'58.156"W	0.00	
4813.00†	10.000	289.700	4761.65	-134.58	202.75	-566.25	40°02'37.276"N	104°55'58.366"W	0.00	
4902.71	10.000	289.700	4850.00	-138.07	208.00	-580.92	40°02'37.327"N	104°55'58.554"W	0.00	BEGIN DROP
4913.00†	9.794	289.700	4860.14	-138.47	208.59	-582.58	40°02'37.333"N	104°55'58.576"W	2.00	
4963.53†	8.784	289.700	4910.00	-140.29	211.34	-590.26	40°02'37.360"N	104°55'58.674"W	2.00	SUSSEX
5013.00†	7.794	289.700	4958.96	-141.89	213.75	-596.98	40°02'37.384"N	104°55'58.761"W	2.00	
5113.00†	5.794	289.700	5058.25	-144.53	217.74	-608.11	40°02'37.424"N	104°55'58.904"W	2.00	
5213.00†	3.794	289.700	5157.89	-146.40	220.55	-615.98	40°02'37.451"N	104°55'59.005"W	2.00	
5313.00†	1.794	289.700	5257.77	-147.49	222.20	-620.57	40°02'37.468"N	104°55'59.064"W	2.00	
5402.71	0.000	178.990	5347.47	-147.81	222.67	-621.89	40°02'37.472"N	104°55'59.081"W	2.00	END DROP
5413.00†	0.000	178.990	5357.76	-147.81	222.67	-621.89	40°02'37.472"N	104°55'59.081"W	0.00	
5513.00†	0.000	178.990	5457.76	-147.81	222.67	-621.89	40°02'37.472"N	104°55'59.081"W	0.00	
5613.00†	0.000	178.990	5557.76	-147.81	222.67	-621.89	40°02'37.472"N	104°55'59.081"W	0.00	
5713.00†	0.000	178.990	5657.76	-147.81	222.67	-621.89	40°02'37.472"N	104°55'59.081"W	0.00	
5813.00†	0.000	178.990	5757.76	-147.81	222.67	-621.89	40°02'37.472"N	104°55'59.081"W	0.00	
5913.00†	0.000	178.990	5857.76	-147.81	222.67	-621.89	40°02'37.472"N	104°55'59.081"W	0.00	
6013.00†	0.000	178.990	5957.76	-147.81	222.67	-621.89	40°02'37.472"N	104°55'59.081"W	0.00	
6113.00†	0.000	178.990	6057.76	-147.81	222.67	-621.89	40°02'37.472"N	104°55'59.081"W	0.00	
6213.00†	0.000	178.990	6157.76	-147.81	222.67	-621.89	40°02'37.472"N	104°55'59.081"W	0.00	
6313.00†	0.000	178.990	6257.76	-147.81	222.67	-621.89	40°02'37.472"N	104°55'59.081"W	0.00	
6413.00†	0.000	178.990	6357.76	-147.81	222.67	-621.89	40°02'37.472"N	104°55'59.081"W	0.00	
6513.00†	0.000	178.990	6457.76	-147.81	222.67	-621.89	40°02'37.472"N	104°55'59.081"W	0.00	
6613.00†	0.000	178.990	6557.76	-147.81	222.67	-621.89	40°02'37.472"N	104°55'59.081"W	0.00	
6713.00†	0.000	178.990	6657.76	-147.81	222.67	-621.89	40°02'37.472"N	104°55'59.081"W	0.00	
6813.00†	0.000	178.990	6757.76	-147.81	222.67	-621.89	40°02'37.472"N	104°55'59.081"W	0.00	
6913.00†	0.000	178.990	6857.76	-147.81	222.67	-621.89	40°02'37.472"N	104°55'59.081"W	0.00	
7013.00†	0.000	178.990	6957.76	-147.81	222.67	-621.89	40°02'37.472"N	104°55'59.081"W	0.00	
7113.00†	0.000	178.990	7057.76	-147.81	222.67	-621.89	40°02'37.472"N	104°55'59.081"W	0.00	
7128.29	0.000	178.990	7073.05	-147.81	222.67	-621.89	40°02'37.472"N	104°55'59.081"W	0.00	KOP, BUILD @ 10°/100'
7213.00†	8.471	178.990	7157.45	-141.61	216.42	-621.78	40°02'37.411"N	104°55'59.080"W	10.00	
7313.00†	18.471	178.990	7254.57	-118.56	193.16	-621.37	40°02'37.181"N	104°55'59.075"W	10.00	
7413.00†	28.471	178.990	7346.18	-79.15	153.39	-620.67	40°02'36.788"N	104°55'59.065"W	10.00	
7513.00†	38.471	178.990	7429.49	-24.58	98.31	-619.70	40°02'36.243"N	104°55'59.053"W	10.00	
7583.71†	45.542	178.990	7482.00	22.28	51.03	-618.87	40°02'35.776"N	104°55'59.042"W	10.00	SHARON SPRINGS
7613.00†	48.471	178.990	7501.97	43.50	29.61	-618.49	40°02'35.565"N	104°55'59.037"W	10.00	
7629.92†	50.163	178.990	7513.00	56.21	16.79	-618.26	40°02'35.438"N	104°55'59.034"W	10.00	NIOBRARA A
7713.00†	58.471	178.990	7561.42	123.02	-50.63	-617.07	40°02'34.772"N	104°55'59.019"W	10.00	
7813.00†	68.471	178.990	7606.03	211.55	-139.97	-615.50	40°02'33.889"N	104°55'58.999"W	10.00	
7913.00†	78.471	178.990	7634.44	306.42	-235.70	-613.81	40°02'32.943"N	104°55'58.977"W	10.00	
8013.00†	88.471	178.990	7645.80	404.73	-334.91	-612.06	40°02'31.962"N	104°55'58.955"W	10.00	



# Planned Wellpath Report

JELTS 36N-19HZ (PERMIT REV-1) PWP

Page 4 of 6



## REFERENCE WELLPATH IDENTIFICATION

Operator	KERR-MCGEE OIL & GAS ONSHORE LP	Slot	SLOT#25 JELTS 36N-19HZ (275'FNL & 1888'FEL, SEC.19)
Area	COLORADO	Well	JELTS 36N-19HZ
Field	WELD COUNTY (KERR MCGEE)	Wellbore	JELTS 36N-19HZ PWB
Facility	SEC.19-T1N-R67W		

## WELLPATH DATA (134 stations) † = interpolated/extrapolated station

MD [ft]	Inclination [°]	Azimuth [°]	TVD [ft]	Vert Sect [ft]	North [ft]	East [ft]	Latitude	Longitude	DLS [°/100ft]	Comments
8028.29	90.000	178.990	7646.00	419.88	-350.20	-611.79	40°02'31.811"N	104°55'58.951"W	10.00	LANDING POINT
8113.00†	90.000	178.991	7646.00	503.81	-434.90	-610.30	40°02'30.974"N	104°55'58.932"W	0.00	
8213.00†	90.000	178.992	7646.00	602.89	-534.88	-608.54	40°02'29.986"N	104°55'58.909"W	0.00	
8313.00†	90.000	178.993	7646.00	701.97	-634.86	-606.78	40°02'28.998"N	104°55'58.887"W	0.00	
8413.00†	90.000	178.995	7646.00	801.05	-734.85	-605.03	40°02'28.010"N	104°55'58.864"W	0.00	
8513.00†	90.000	178.996	7646.00	900.13	-834.83	-603.27	40°02'27.022"N	104°55'58.841"W	0.00	
8613.00†	90.000	178.997	7646.00	999.21	-934.82	-601.52	40°02'26.034"N	104°55'58.819"W	0.00	
8713.00†	90.000	178.998	7646.00	1098.29	-1034.80	-599.77	40°02'25.046"N	104°55'58.796"W	0.00	
8813.00†	90.000	178.999	7646.00	1197.37	-1134.79	-598.03	40°02'24.058"N	104°55'58.774"W	0.00	
8913.00†	90.000	179.001	7646.00	1296.45	-1234.77	-596.28	40°02'23.070"N	104°55'58.751"W	0.00	
9013.00†	90.000	179.002	7646.00	1395.54	-1334.76	-594.54	40°02'22.082"N	104°55'58.729"W	0.00	
9113.00†	90.000	179.003	7646.00	1494.62	-1434.74	-592.80	40°02'21.093"N	104°55'58.707"W	0.00	
9213.00†	90.000	179.004	7646.00	1593.70	-1534.73	-591.06	40°02'20.105"N	104°55'58.684"W	0.00	
9313.00†	90.000	179.005	7646.00	1692.78	-1634.71	-589.32	40°02'19.117"N	104°55'58.662"W	0.00	
9413.00†	90.000	179.006	7646.00	1791.87	-1734.70	-587.58	40°02'18.129"N	104°55'58.639"W	0.00	
9513.00†	90.000	179.008	7646.00	1890.95	-1834.68	-585.85	40°02'17.141"N	104°55'58.617"W	0.00	
9613.00†	90.000	179.009	7646.00	1990.03	-1934.67	-584.12	40°02'16.153"N	104°55'58.595"W	0.00	
9713.00†	90.000	179.010	7646.00	2089.12	-2034.65	-582.39	40°02'15.165"N	104°55'58.573"W	0.00	
9813.00†	90.000	179.011	7646.00	2188.20	-2134.64	-580.66	40°02'14.177"N	104°55'58.550"W	0.00	
9913.00†	90.000	179.012	7646.00	2287.29	-2234.62	-578.94	40°02'13.189"N	104°55'58.528"W	0.00	
10013.00†	90.000	179.014	7646.00	2386.37	-2334.61	-577.22	40°02'12.201"N	104°55'58.506"W	0.00	
10113.00†	90.000	179.015	7646.00	2485.46	-2434.59	-575.50	40°02'11.213"N	104°55'58.484"W	0.00	
10213.00†	90.000	179.016	7646.00	2584.54	-2534.58	-573.78	40°02'10.225"N	104°55'58.462"W	0.00	
10313.00†	90.000	179.017	7646.00	2683.63	-2634.56	-572.06	40°02'09.237"N	104°55'58.440"W	0.00	
10413.00†	90.000	179.018	7646.00	2782.72	-2734.55	-570.35	40°02'08.248"N	104°55'58.418"W	0.00	
10513.00†	90.000	179.020	7646.00	2881.80	-2834.53	-568.64	40°02'07.260"N	104°55'58.396"W	0.00	
10613.00†	90.000	179.021	7646.00	2980.89	-2934.52	-566.93	40°02'06.272"N	104°55'58.374"W	0.00	
10713.00†	90.000	179.022	7646.00	3079.98	-3034.50	-565.22	40°02'05.284"N	104°55'58.352"W	0.00	
10813.00†	90.000	179.023	7646.00	3179.06	-3134.49	-563.51	40°02'04.296"N	104°55'58.330"W	0.00	
10913.00†	90.000	179.024	7646.00	3278.15	-3234.48	-561.81	40°02'03.308"N	104°55'58.308"W	0.00	
11013.00†	90.000	179.025	7646.00	3377.24	-3334.46	-560.11	40°02'02.320"N	104°55'58.286"W	0.00	
11113.00†	90.000	179.027	7646.00	3476.33	-3434.45	-558.41	40°02'01.332"N	104°55'58.264"W	0.00	
11213.00†	90.000	179.028	7646.00	3575.41	-3534.43	-556.71	40°02'00.344"N	104°55'58.242"W	0.00	
11313.00†	90.000	179.029	7646.00	3674.50	-3634.42	-555.01	40°01'59.356"N	104°55'58.220"W	0.00	
11413.00†	90.000	179.030	7646.00	3773.59	-3734.40	-553.32	40°01'58.368"N	104°55'58.198"W	0.00	
11513.00†	90.000	179.031	7646.00	3872.68	-3834.39	-551.63	40°01'57.380"N	104°55'58.177"W	0.00	
11613.00†	90.000	179.033	7646.00	3971.77	-3934.37	-549.94	40°01'56.391"N	104°55'58.155"W	0.00	
11713.00†	90.000	179.034	7646.00	4070.86	-4034.36	-548.25	40°01'55.403"N	104°55'58.133"W	0.00	
11813.00†	90.000	179.035	7646.00	4169.95	-4134.35	-546.57	40°01'54.415"N	104°55'58.111"W	0.00	
11913.00†	90.000	179.036	7646.00	4269.04	-4234.33	-544.88	40°01'53.427"N	104°55'58.090"W	0.00	
12013.00†	90.000	179.037	7646.00	4368.13	-4334.32	-543.20	40°01'52.439"N	104°55'58.068"W	0.00	
12113.00†	90.000	179.039	7646.00	4467.22	-4434.30	-541.52	40°01'51.451"N	104°55'58.047"W	0.00	
12213.00†	90.000	179.040	7646.00	4566.31	-4534.29	-539.85	40°01'50.463"N	104°55'58.025"W	0.00	
12224.71	90.000	179.040	7646.00 <sup>1</sup>	4577.92	-4546.00	-539.65	40°01'50.347"N	104°55'58.022"W	0.00	TOTAL DEPTH



# Planned Wellpath Report

JELTS 36N-19HZ (PERMIT REV-1) PWP

Page 5 of 6



REFERENCE WELLPATH IDENTIFICATION			
Operator	KERR-MCGEE OIL & GAS ONSHORE LP	Slot	SLOT#25 JELTS 36N-19HZ (275'FNL & 1888'FEL, SEC.19)
Area	COLORADO	Well	JELTS 36N-19HZ
Field	WELD COUNTY (KERR MCGEE)	Wellbore	JELTS 36N-19HZ PWB
Facility	SEC.19-T1N-R67W		

HOLE & CASING SECTIONS - Ref Wellbore: JELTS 36N-19HZ PWB Ref Wellpath: JELTS 36N-19HZ (PERMIT REV-1) PWP									
String/Diameter	Start MD [ft]	End MD [ft]	Interval [ft]	Start TVD [ft]	End TVD [ft]	Start N/S [ft]	Start E/W [ft]	End N/S [ft]	End E/W [ft]
13.5in Open Hole	13.00	900.00	887.00	13.00	900.00	0.00	0.00	0.00	0.00
9.625in Casing Surface	13.00	900.00	887.00	13.00	900.00	0.00	0.00	0.00	0.00
8.75in Open Hole	900.00	8028.29	7128.29	900.00	7646.00	0.00	0.00	-350.20	-611.79
7in Casing Intermediate	13.00	8028.29	8015.29	13.00	7646.00	0.00	0.00	-350.20	-611.79
6.125in Open Hole	8028.29	12224.71	4196.42	7646.00	7646.00	-350.20	-611.79	-4546.00	-539.65
4.5in Casing Production	13.00	12224.71	12211.71	13.00	7646.00	0.00	0.00	-4546.00	-539.65

TARGETS									
Name	MD [ft]	TVD [ft]	North [ft]	East [ft]	Grid East [US ft]	Grid North [US ft]	Latitude	Longitude	Shape
SECTION 19 LINES		27.00	-38.57	-2052.08	3157293.83	1259018.03	40°02'34.890"N	104°56'17.470"W	polygon
1) JELTS 36N-19HZ BHL ON PLAT REV-1 (460'FSL & 2510'FEL, SEC.19)	12224.71	7646.00	-4546.00	-539.65	3158835.09	1254520.57	40°01'50.347"N	104°55'58.022"W	point
SEC. 19 HARDLINES (460' SETBACKS)		8027.00	-38.57	-2052.08	3157293.83	1259018.03	40°02'34.890"N	104°56'17.470"W	polygon

SURVEY PROGRAM - Ref Wellbore: JELTS 36N-19HZ PWB Ref Wellpath: JELTS 36N-19HZ (PERMIT REV-1) PWP				
Start MD [ft]	End MD [ft]	Positional Uncertainty Model	Log Name/Comment	Wellbore
13.00	8028.29	NaviTrak (Standard)		JELTS 36N-19HZ PWB
8028.29	12224.71	OnTrak (Standard)		JELTS 36N-19HZ PWB



# Planned Wellpath Report

JELTS 36N-19HZ (PERMIT REV-1) PWP

Page 6 of 6



REFERENCE WELLPATH IDENTIFICATION			
Operator	KERR-MCGEE OIL & GAS ONSHORE LP	Slot	SLOT#25 JELTS 36N-19HZ (275'FNL & 1888'FEL, SEC.19)
Area	COLORADO	Well	JELTS 36N-19HZ
Field	WELD COUNTY (KERR MCGEE)	Wellbore	JELTS 36N-19HZ PWB
Facility	SEC.19-T1N-R67W		

WELLPATH COMMENTS				
MD [ft]	Inclination [°]	Azimuth [°]	TVD [ft]	Comment
4963.53	8.784	289.700	4910.00	SUSSEX
7583.71	45.542	178.990	7482.00	SHARON SPRINGS
7629.92	50.163	178.990	7513.00	NIOBRARA A