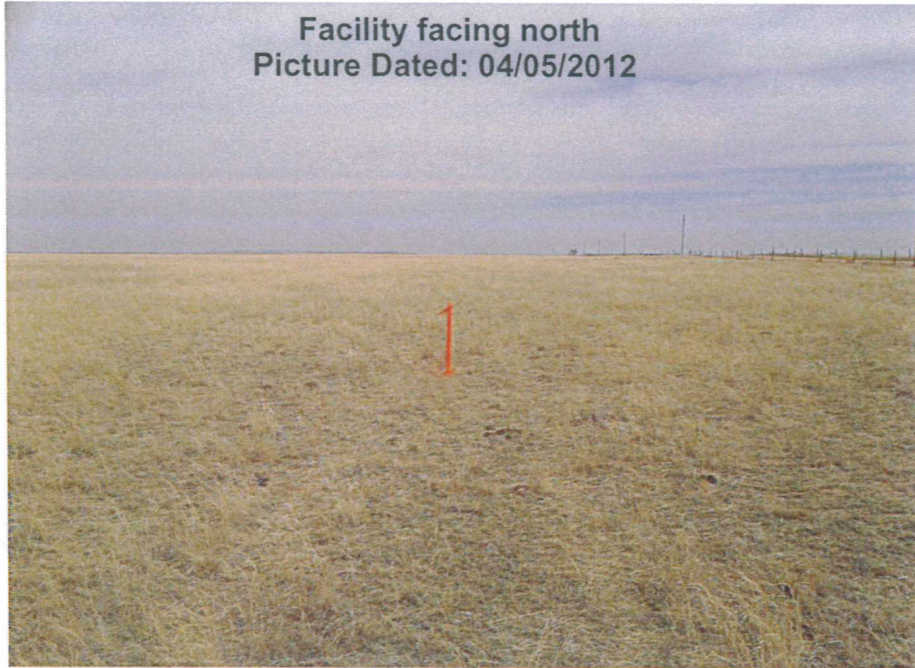
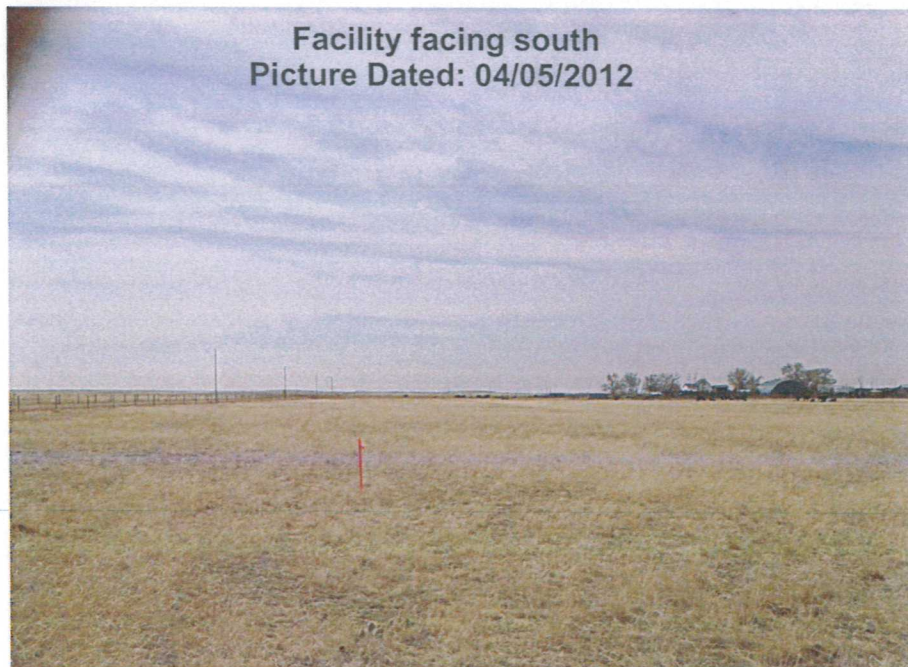


BETHYL GW30-16, 09 PRODUCTION FACILITY
Township 8 North, Range 63 West
Section 30: NE/4SE/4
Weld County, Colorado

Facility facing north
Picture Dated: 04/05/2012



Facility facing south
Picture Dated: 04/05/2012



BETHYL GW30-16, 09 PRODUCTION FACILITY
Township 8 North, Range 63 West
Section 30: NE/4SE/4
Weld County, Colorado

