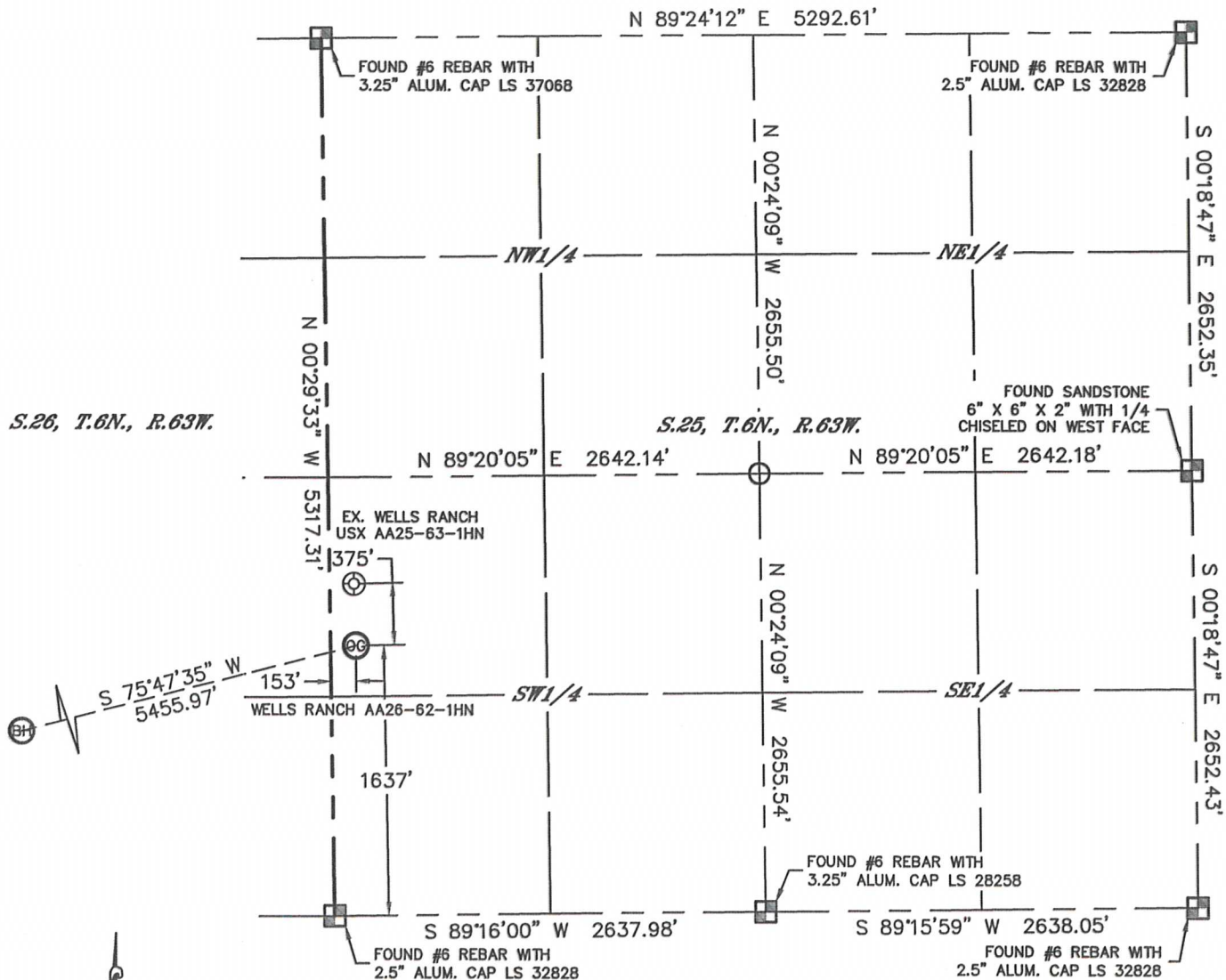


WELL LOCATION CERTIFICATE

THIS MAP DOES NOT REPRESENT A BOUNDARY SURVEY

SECTION: 25
TOWNSHIP: 6N
RANGE: 63W



In accordance with a request from Matt Verbit with Noble Energy Inc., Lat40°, Inc. has determined the surface location of the WELLS RANCH AA26-62-1HN to be 1637' from the SOUTH line and 153' from the WEST line as measured at right angles from the section lines of Section 25, Township 6 North, Range 63 West and the bottom hole to be 330' from the SOUTH line and 150' from the WEST line as measured at right angles from the section lines of Section 26, Township 6 North, Range 63 West of the Sixth Principal Meridian, County of Weld, State of Colorado.

I hereby state that this Well Location Certificate was prepared by me, or under my direct supervision, that the fieldwork was completed on 10/30/12, for and on behalf of Noble Energy Inc. That this is not a Land Survey Plat or an Improvement Survey Plat, and that it is not to be relied upon for establishment of fence, building, or other future Improvement lines.

NOTE:

- 1) Bearings shown are Grid Bearings of the Colorado State Plane Coordinate System, North Zone, North American Datum 1983/2007. The lineal dimensions as contained herein are based upon the "U.S. Survey Foot."
- 2) Ground elevations are based on an observed GPS elevation (NAVD 1988 DATUM).
- 3) NEAREST EXISTING WELL: WELLS RANCH USX AA25-63-1HN, 375'
- 4) IMPROVEMENTS: See LOCATION DRAWING for all visible improvements within 400' of disturbed area.
- 5) SURFACE USE: RANGELAND / EX. WELL PAD
- 6) INSTRUMENT OPERATOR: WYATT HALL

NOTE

According to Colorado law, you must commence any legal action based upon any defect in this W.L.C. within three years after you discover such defect. In no event, may any action based upon any defect in this survey be commenced more than ten years after the date of the certificate shown hereon. (13-80-105 C.R.S.)

LEGEND

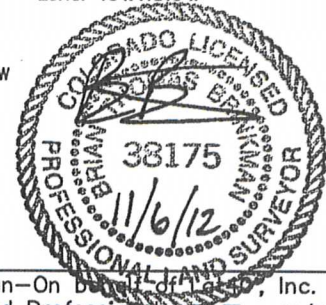
- = ALIQUOT MONUMENT AS DESCRIBED
- = CALCULATED POSITION

SURFACE LOCATION

LAT: 40.45464°N
LONG: 104.39410°W
PDOP: 2.4
ELEV: 4793'
1/4, 1/4: NW1/4SW1/4
NEAREST PROPERTY LINE: 153' W

BOTTOM HOLE

LAT: 40.45115°N
LONG: 104.41316°W



SHEET 1 OF 2

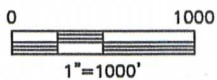
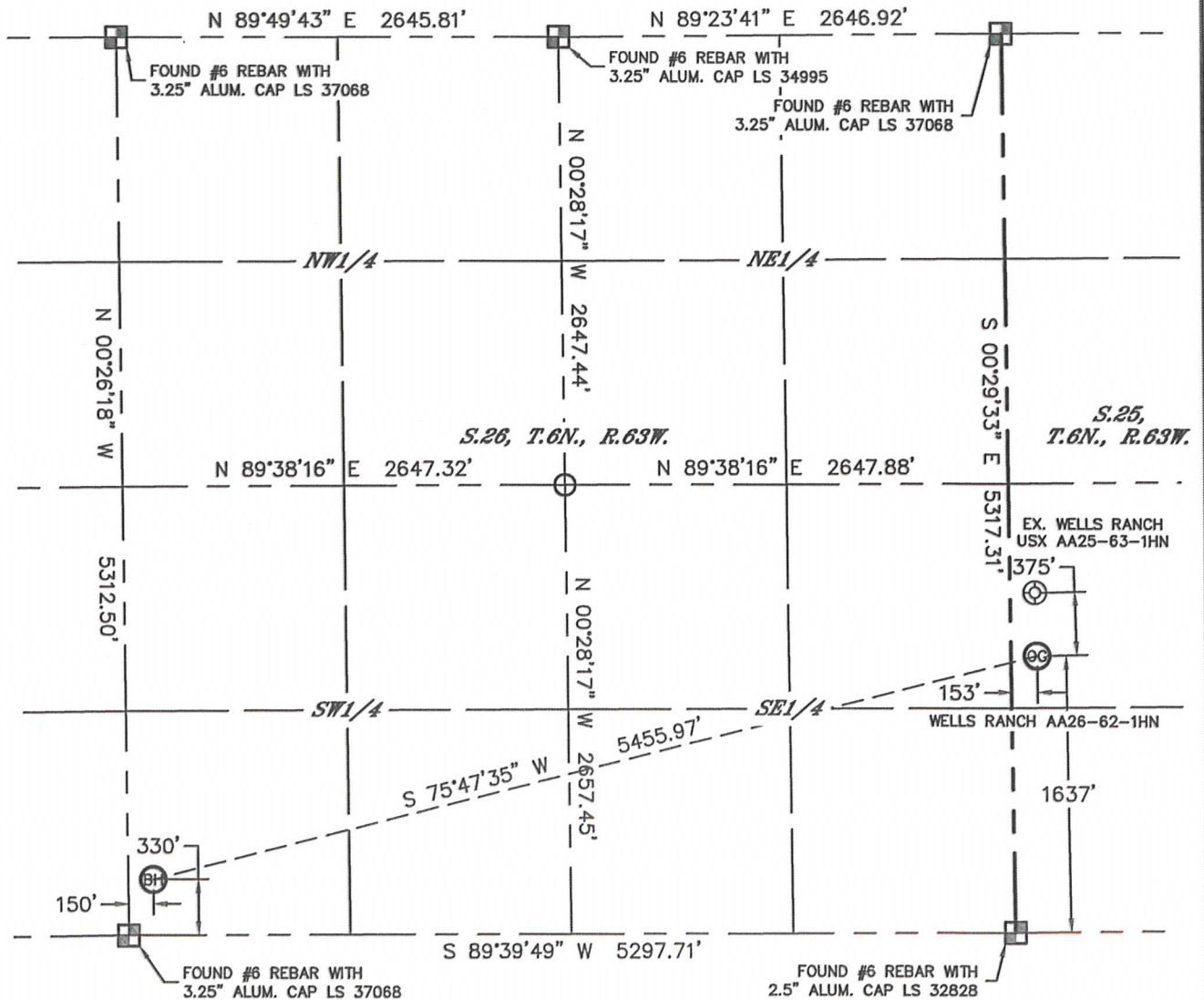
Brian T. Brinkman—On behalf of Lat40°, Inc.
Colorado Licensed Professional Land Surveyor No. 38175

DATE: rev11/06/2012
PROJECT#: 2012141

WELL LOCATION CERTIFICATE

THIS MAP DOES NOT REPRESENT A BOUNDARY SURVEY

SECTION: 25
TOWNSHIP: 6N
RANGE: 63W



NOTE

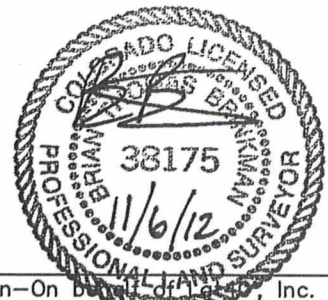
According to Colorado law, you must commence any legal action based upon any defect in this W.L.C. within three years after you discover such defect. In no event, may any action based upon any defect in this survey be commenced more than ten years after the date of the certificate shown hereon. (13-80-105 C.R.S.)

LEGEND

- = ALIQUOT MONUMENT AS DESCRIBED
- = CALCULATED POSITION

SHEET 2 OF 2

Brian T. Brinkman-On behalf of Lat40°, Inc.
Colorado Licensed Professional Land Surveyor No. 38175
DATE: rev11/06/2012
PROJECT#: 2012141

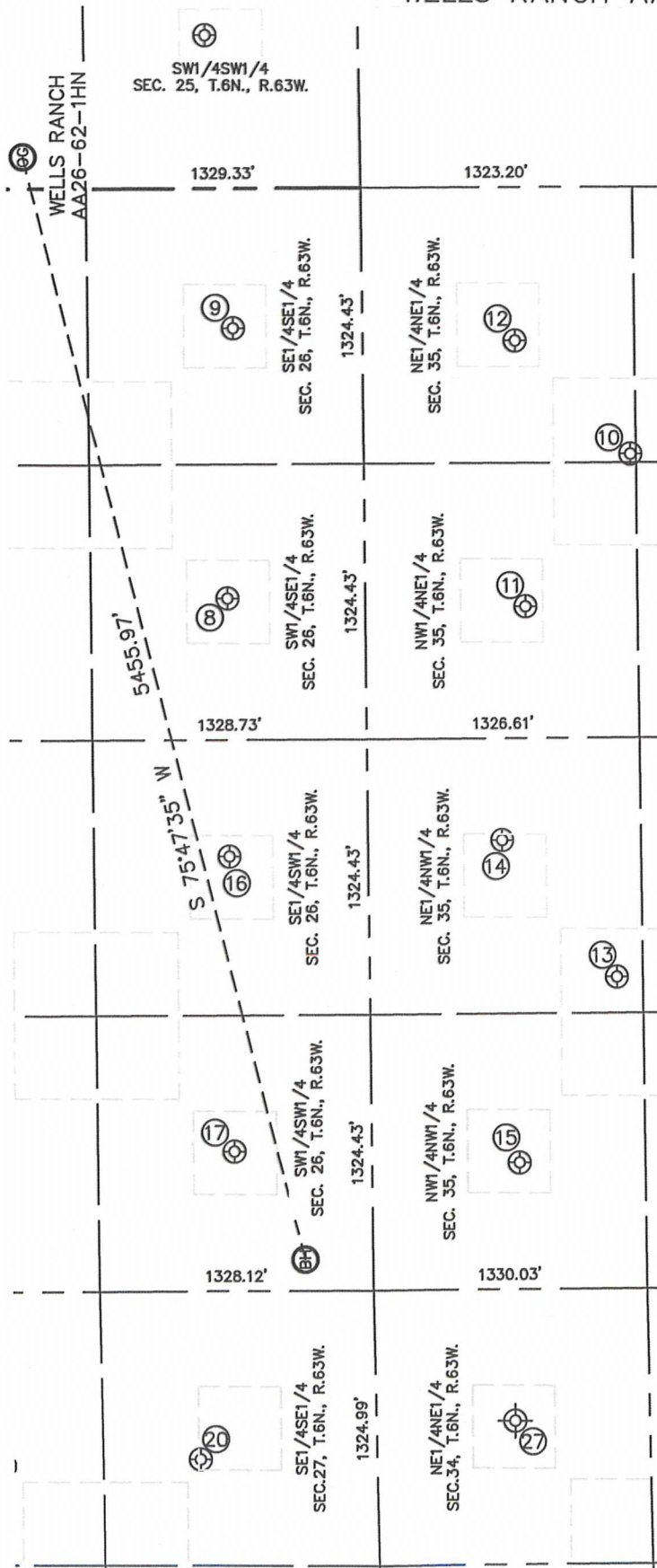


Lat40°, Inc. 1635 Foxtrail Drive, Suite 325 Loveland, CO 970-776-3321

SITE SKETCH

WELLS RANCH AA26-62-1HN

SECTION: 25
TOWNSHIP: 6N
RANGE: 63W



⑧
WELLS RANCH AA26-15
SW1/4SE1/4
669' FSL
1968' FEL
LAT-40.45202°N
LONG-104.40173°W
PDOP: 2.0
ELEV: 4822'

⑨
WELLS RANCH AA26-16
SE1/4SE1/4
626' FSL
672' FEL
LAT-40.45188°N
LONG-104.39708°W
PDOP: 1.4
ELEV: 4818'

⑩
WELLS RANCH USX
AA35-17
NE1/4NE1/4
1298' FNL
1282' FEL
LAT-40.44661°N
LONG-104.39930°W
PDOP: 1.5
ELEV: 4784'

⑪
WELLS RANCH USX
AA35-02
NW1/4NE1/4
778' FNL
2013' FEL
LAT-40.44805°N
LONG-104.40191°W
PDOP: 1.2
ELEV: 4793'

⑫
WELLS RANCH USX
AA35-01
NE1/4NE1/4
742' FNL
737' FEL
LAT-40.44813°N
LONG-104.39733°W
PDOP: 1.2
ELEV: 4795'

⑬
WELLS RANCH USX
AA35-19
NE1/4NW1/4
1202' FNL
1496' FWL
LAT-40.44692°N
LONG-104.40832°W
PDOP: 2.0
ELEV: 4790'

⑭
WELLS RANCH USX
AA35-03
NE1/4NW1/4
651' FNL
2156' FWL
LAT-40.44842°N
LONG-104.40595°W
PDOP: 1.2
ELEV: 4797'

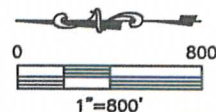
⑮
WELLS RANCH USX
AA35-04
NW1/4NW1/4
716' FNL
608' FWL
LAT-40.44827°N
LONG-104.41151°W
PDOP: 1.8
ELEV: 4823'

⑯
WELLS RANCH AA26-14
SE1/4SW1/4
674' FSL
2087' FWL
LAT-40.45206°N
LONG-104.40619°W
PDOP: 1.3
ELEV: 4812'

⑰
WELLS RANCH AA26-13X
SW1/4SW1/4
667' FSL
671' FWL
LAT-40.45206°N
LONG-104.41128°W
PDOP: 1.3
ELEV: 4821'

⑱
WELLS RANCH 44-27
SE1/4SE1/4
857' FSL
808' FEL
LAT-40.45259°N
LONG-104.41659°W
PDOP: 1.6
ELEV: 4846'

⑳
WELLS RANCH 41-34
(Drilled & Abandoned)
NE1/4NE1/4
668' FNL (COGCC)
666' FEL (COGCC)
LAT-40.44839°N (COGCC)
LONG-104.41597°W (COGCC)
PDOP: N/A
ELEV: 4830' (COGCC)



DATE: rev11/06/2012
PROJECT#: 2012141