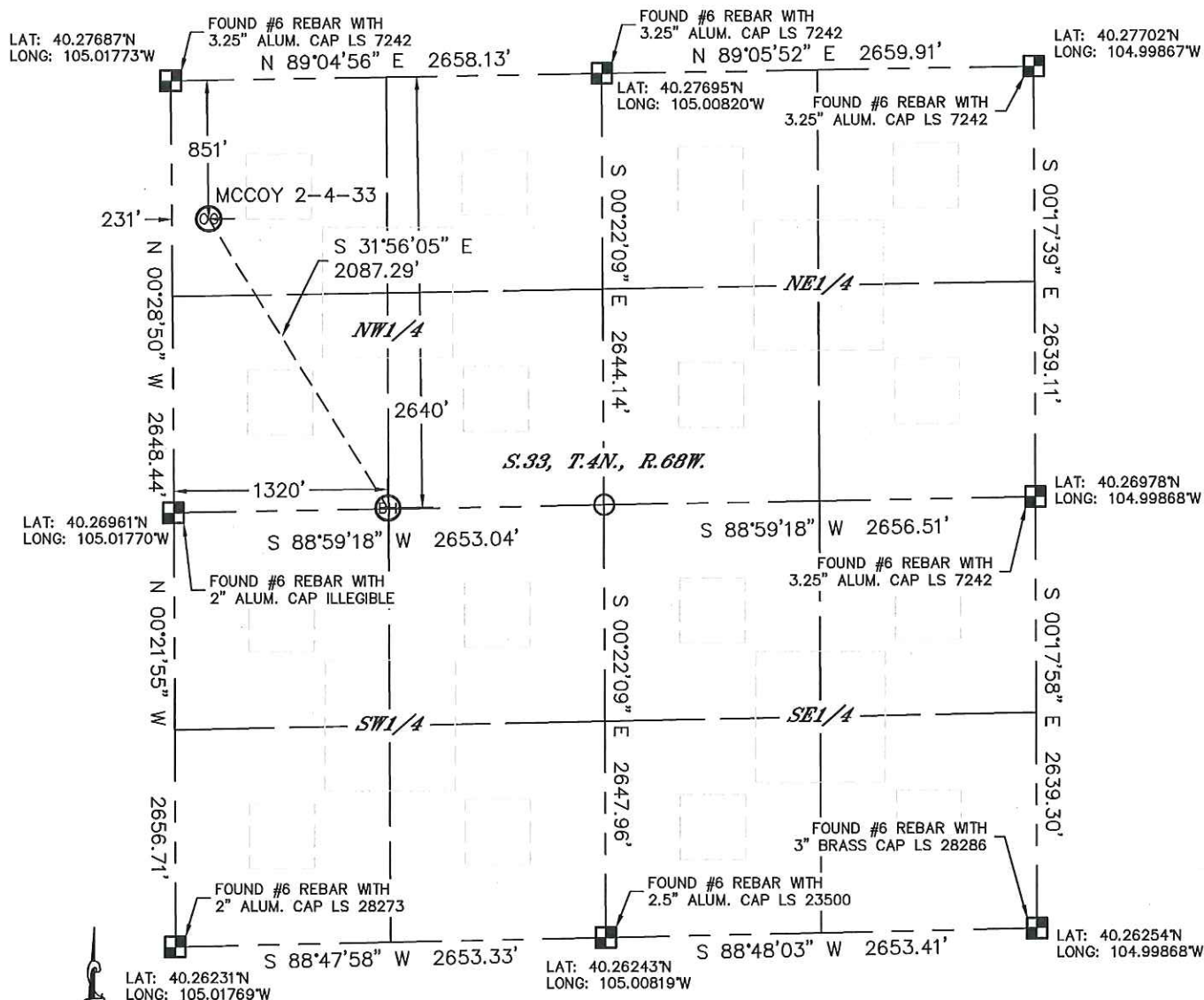


Lat40°, Inc. 1635 Foxtrail Drive, Suite 325 Loveland, CO 970-776-3321

# WELL LOCATION CERTIFICATE

THIS MAP DOES NOT REPRESENT A BOUNDARY SURVEY

SECTION: 33  
TOWNSHIP: 4N  
RANGE: 68W



In accordance with a request from JANA ORLANDINI with MAK-J ENERGY COLORADO, LLC Lat40<sup>o</sup>, Inc. has determined the surface location of the MCCOY 2-4-33 to be 851' from the NORTH line and 231' from the WEST line and the bottom hole to be 2640' from the NORTH line and 1320' from the WEST line as measured at right angles from the section lines of Section 33, Township 4 North, Range 68 West of the Sixth Principal Meridian, County of Weld, State of Colorado.

I hereby state that this Well Location Certificate was prepared by me, or under my direct supervision, that the fieldwork was completed on 12/11/2012, for and on behalf of MAK-J ENERGY COLORADO, LLC. That this is not a Land Survey Plat or an Improvement Survey Plat, and that it is not to be relied upon for establishment of fence, building, or other future improvement lines.

**NOTE:**

- 1) Bearings shown are Grid Bearings of the Colorado State Plane Coordinate System, North Zone, North American Datum 1983/2007. The lineal dimensions as contained herein are based upon the "U.S. Survey Foot."
- 2) Ground elevations are based on an observed GPS elevation (NAVD 1988 DATUM).
- 3) IMPROVEMENTS: See LOCATION DRAWING for all visible improvements within 400' of disturbed area.
- 4) SURFACE USE: PASTURE
- 5) INSTRUMENT OPERATOR: ADAM KELLY

## SURFACE LOCATION

LAT: 40.27454N  
LONG: 105.01689W  
PDOP: 2.2  
ELEV: 5027'  
1/4,1/4: NW1/4NW1/4  
NEAREST PROPERTY LINE: 231' W



BOTTOM HOLE

LAT: 40.26967°N  
LONG: 105.01297°W

### NOTE

According to Colorado law, you must commence any legal action based upon any defect in this W.L.C. within three years after you discover such defect. In no event, may any action based upon any defect in this survey be commenced more than ten years after the date of the certificate shown hereon. (13-80-105 C.R.S.)

### LEGEND

-  = ALIQUOT MONUMENT AS DESCRIBED  
 = CALCULATED POSITION

Brian T. Brinkman—On behalf of B. T. Brinkman, Inc.  
Colorado Licensed Professional Land Surveyor No. 38175  
DATE: 12/12/2012  
PROJECT#: 2012087

