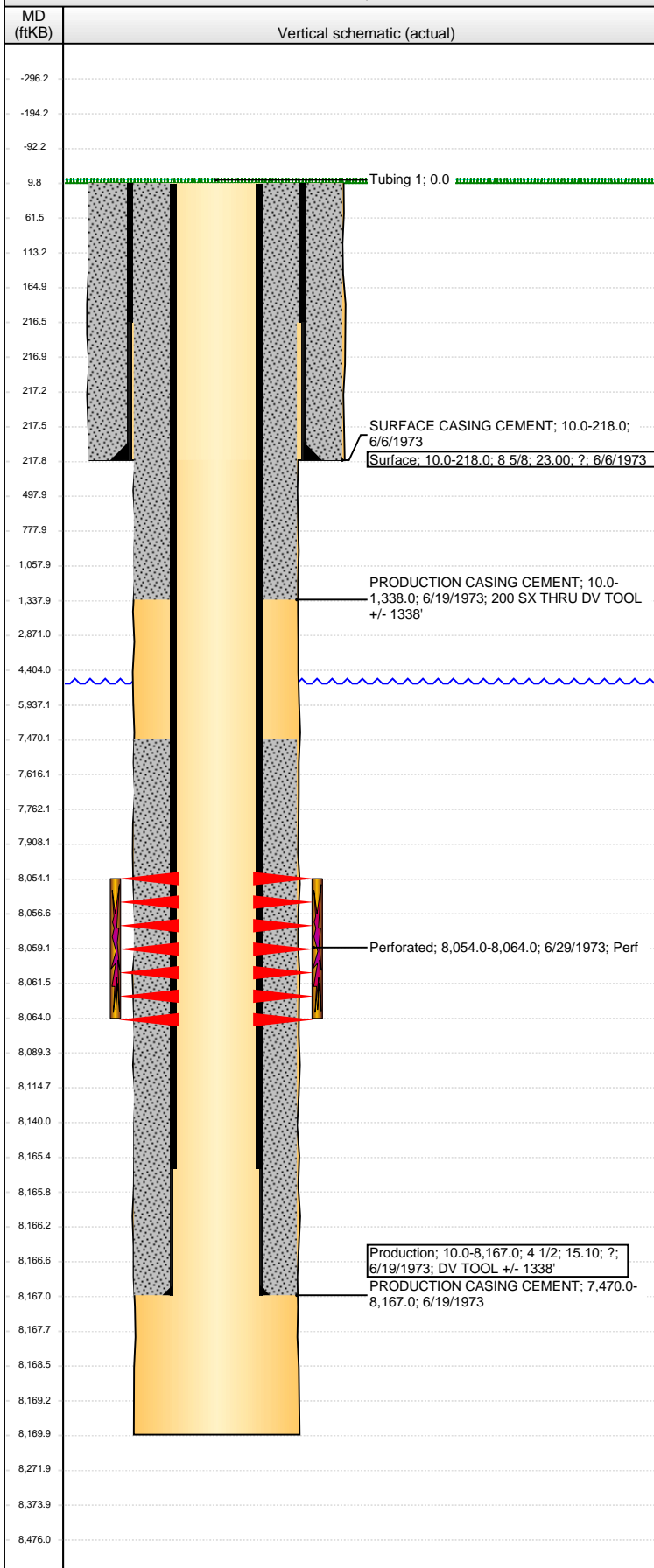


Wellbore Schematic Input Report

Well Name: HECKENDORF 02

VERTICAL - ORIGINAL HOLE, 5/7/2013 7:26:54 AM



Well Header

API	Business Unit	District	Well Config
05-001-06671	WATTENBERG	15	VERTICAL
Original KB Elevation (ft)	KB - GL / MSL (ftKB)	Spud Date	P & A Date
5,064.00	10.00	6/6/1973	

Comment
SKETCHY DATA; NO DRILL REPORTS OR CBL, USING ST RPTS & USING
BEST ESTIMATE IN DATES AND DEPTHS
NO TBG INFO AND CEMENT TOPS ESTIMATED
DV TOOL +/- 1338'

Directions To Well

Congressional Location

Quarter 1	Quarter 2	Quarter 3	Quarter 4	Section	Township	Twnshp N...	Range	Rng E/W Dir
		SW	SW	14	1	S	66	W

Bottom Hole Location

North-South Distance (ft)	From N or S Line	East-West Distance (ft)	From E or W Line

Plug Back Total Depths

Date	Depth (ftKB)	Method	Com

Wellbore Sections

Section Des	Size (in)	Act Top (ftKB)	Act Btm (ftKB)
SURFACE	12 1/4	10.0	218.0
PRODUCTION	7 7/8	218.0	8,170.0

Zone Statuses

Zone Name	Status Date	Status	Job
J SAND	7/4/1973	PR	DRILLING/COMPLETION - ORIGINAL, 6/6/1973 00:00

Casing Strings

Surface, 218.0ftKB

Casing Description	Run Date	OD (in)	Wt/Len (l...)	Grade	Top (ftKB)	MD (ftKB)
Surface	6/6/1973	8 5/8	23.00	?	10.0	218.0

Production, 8,167.0ftKB

Casing Description	Run Date	OD (in)	Wt/Len (l...)	Grade	Top (ftKB)	MD (ftKB)
Production	6/19/1973	4 1/2	15.10	?	10.0	8,167.0

Cement

Description	Top Depth (ftKB)	Bottom Depth (ftKB)
SURFACE CASING CEMENT	10.0	218.0
PRODUCTION CASING CEMENT	10.0	1,338.0
PRODUCTION CASING CEMENT	7,470.0	8,167.0

Tubing Components

Item Des	OD (in)	Wt (lb/ft)	Grade	Jts	Len (ft)	Btm (ftKB)	Btm (TVD) (ftKB)
	1 1/2	2.75	JCW 55			0.0	

Perforation Data

Zone	Bnch/St g	Entered Shot Total	Top (ftKB)	Btm (ftKB)	Date
J SAND, ORIGINAL HOLE		20	8,054.00	8,064.00	6/29/1973

Stimulations & Treatments

Date	Zone	Primary Job Type
6/30/1973	J SAND, ORIGINAL HOLE	DRILLING/COMPLETION - ORIGINAL
Technical Result	Tech Result Details	Tech Result Note
Comment		

Other In Hole

Run Date	Des	OD (in)	Top (ftKB)	Btm (ftKB)

Logs

Date	Type	Top (ftKB)	Btm (ftKB)
6/18/1973	COMPENSATED DENSITY	4,650.0	8,102.0
6/18/1973	INDUCTION	220.0	8,102.0