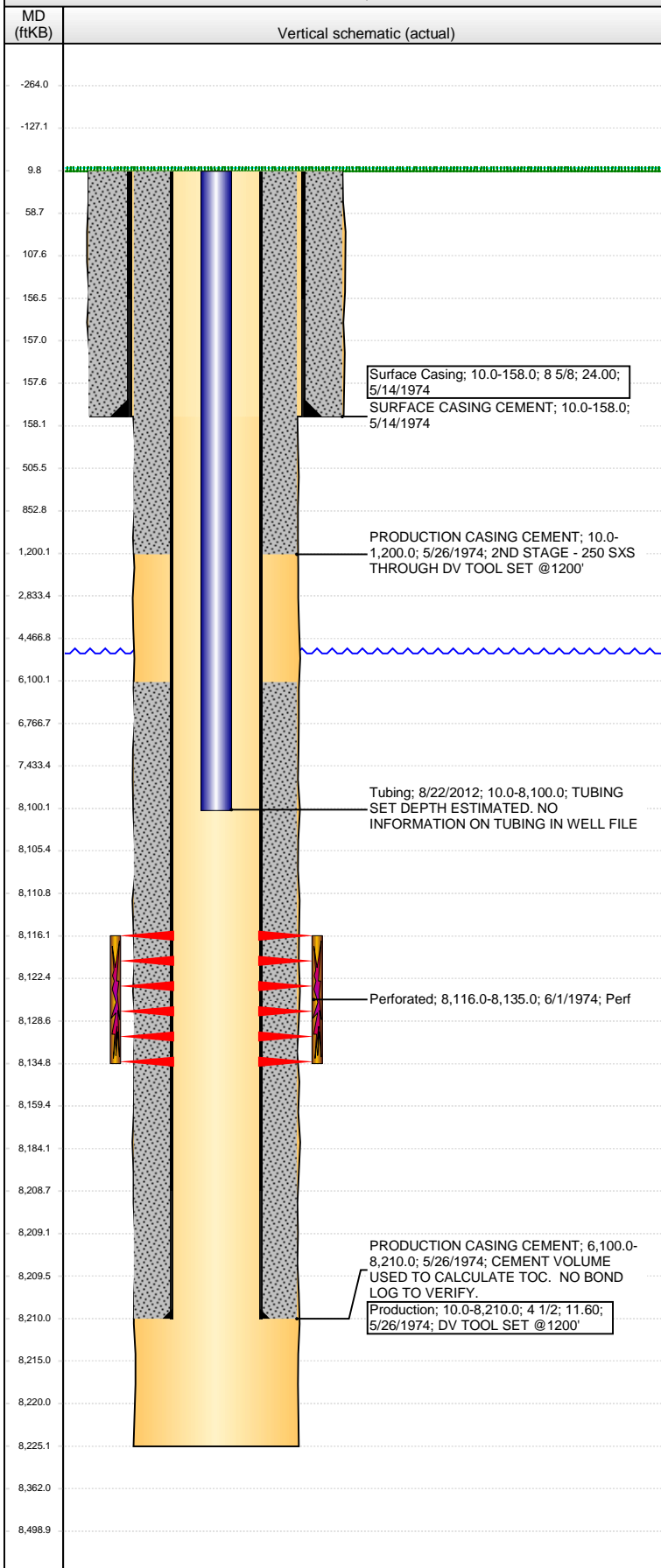


Well Name: TASHIRO-UPRR 01

VERTICAL - ORIGINAL HOLE, 5/3/2013 3:03:07 PM



Well Header

API	Business Unit	District	Well Config
05-001-06841	WATTENBERG	15	VERTICAL
Original KB Elevation (ft)	KB - GL / MSL (ftKB)	Spud Date	P & A Date
5,039.00	10.00	5/14/1974	

Comment
DV TOOL SET @1200; TOC ESTIMATED FROM VOLUME CALCULATIONS;
NO BOND LOG TO VERIFY.

Directions To Well

Congressional Location

Quarter 1	Quarter 2	Quarter 3	Quarter 4	Section	Township	Twnshp N...	Range	Rng E/W Dir
		SW	SW	17	1	S	66	W

Bottom Hole Location

North-South Distance (ft)	From N or S Line	East-West Distance (ft)	From E or W Line
---------------------------	------------------	-------------------------	------------------

Plug Back Total Depths

Date	Depth (ftKB)	Method	Com

Wellbore Sections

Section Des	Size (in)	Act Top (ftKB)	Act Btm (ftKB)
SURFACE	12 1/4	10.0	158.0
PRODUCTION	7 7/8	158.0	8,225.0

Zone Statuses

Zone Name	Status Date	Status	Job
J SAND	6/20/1974	PR	DRILLING/COMPLETION - RE-ENTRY, 5/14/1974 00:00

Casing Strings

Casing Description	Run Date	OD (in)	Wt/Len (l...)	Grade	Top (ftKB)	MD (ftKB)
Surface Casing	5/14/1974	8 5/8	24.00		10.0	158.0

Production, 8,210.0ftKB

Casing Description	Run Date	OD (in)	Wt/Len (l...)	Grade	Top (ftKB)	MD (ftKB)
Production	5/26/1974	4 1/2	11.60		10.0	8,210.0

Cement

Description	Top Depth (ftKB)	Bottom Depth (ftKB)
SURFACE CASING CEMENT	10.0	158.0
PRODUCTION CASING CEMENT	10.0	1,200.0
PRODUCTION CASING CEMENT	6,100.0	8,210.0

Tubing Components

Item Des	OD (in)	Wt (lb/ft)	Grade	Jts	Len (ft)	Btm (ftKB)	Btm (TVD) (ftKB)
Poly-Tubing	1 1/2				8,090.00	8,100.0	

Perforation Data

Zone	Bnch/St g	Entered Shot Total	Top (ftKB)	Btm (ftKB)	Date
J SAND, ORIGINAL HOLE		39	8,116.00	8,135.00	6/1/1974

Stimulations & Treatments

Date	Zone	Primary Job Type
6/1/1974	J SAND, ORIGINAL HOLE	DRILLING/COMPLETION - RE-ENTRY
Technical Result	Tech Result Details	Tech Result Note

Comment

Other In Hole

Run Date	Des	OD (in)	Top (ftKB)	Btm (ftKB)

Logs

Date	Type	Top (ftKB)	Btm (ftKB)
5/25/1974	INDUCTION	158.0	8,224.0
5/25/1974	RESISITIVITY	8,080.0	8,217.0
5/26/1974	COMPENSATED DENSITY	4,750.0	8,224.0