

*The Road to Excellence Starts with Safety*

Sold To #: 300721		Ship To #: 2968977		Quote #:		Sales Order #: 900069498	
Customer: WPX ENERGY ROCKY MOUNTAIN LLC-EBUS				Customer Rep: Oaks, Rick			
Well Name: RWF		Well #: 523-36		API/UWI #: 05-045-21484			
Field: RULISON		City (SAP): RIFLE		County/Parish: Garfield		State: Colorado	
Lat: N 39.482 deg. OR N 39 deg. 28 min. 56.226 secs.				Long: W 107.837 deg. OR W -108 deg. 9 min. 47.959 secs.			
Contractor: NABORS 576		Rig/Platform Name/Num: NABORS 576					
Job Purpose: Cement Surface Casing							
Well Type: Development Well				Job Type: Cement Surface Casing			
Sales Person: MAYO, MARK				Srv Supervisor: ARNOLD, EDWARD		MBU ID Emp #: 439784	
Job Personnel							
HES Emp Name	Exp Hrs	Emp #	HES Emp Name	Exp Hrs	Emp #	HES Emp Name	Exp Hrs
ARNOLD, EDWARD	5.5	439784	ROSE, BENJAMIN	5.5	487022	SALAZAR, PAUL Omar	5.5
JOHN			KEITH				
SINCLAIR, DAN J	5.5	338784					
Equipment							
HES Unit #	Distance-1 way	HES Unit #	Distance-1 way	HES Unit #	Distance-1 way	HES Unit #	Distance-1 way
10616651C	60 mile	10722398	60 mile	11139330	60 mile	11259882	60 mile
11808827	60 mile						
Job Hours							
Date	On Location Hours	Operating Hours	Date	On Location Hours	Operating Hours	Date	On Location Hours
1-8-2012	5.5	3					
TOTAL		Total is the sum of each column separately					
Job				Job Times			
Formation Name				Called Out	Date	Time	Time Zone
Formation Depth (MD)	Top		Bottom	On Location	08 - Jan - 2013	07:30	MST
Form Type		BHST		Job Started	08 - Jan - 2013	13:00	MST
Job depth MD	11420. ft	Job Depth TVD	1142. ft	Job Completed	08 - Jan - 2013	16:15	MST
Water Depth		Wk Ht Above Floor	. ft	Departed Loc	08 - Jan - 2013	17:15	MST
Perforation Depth (MD)	From		To		08 - Jan - 2013	18:30	MST
Well Data							
Description	New / Used	Max pressure psig	Size in	ID in	Weight lbm/ft	Thread	Grade
							Top MD ft
							Bottom MD ft
							Top TVD ft
							Bottom TVD ft
Sales/Rental/3 <sup>rd</sup> Party (HES)							
Description				Qty	Qty uom	Depth	Supplier
PLUG,CMTG,TOP,9 5/8,HWE,8.16 MIN/9.06 MA				1	EA		
Tools and Accessories							
Type	Size	Qty	Make	Depth	Type	Size	Qty
Guide Shoe					Packer		
Float Shoe					Bridge Plug		
Float Collar					Retainer		
Insert Float							
Stage Tool							
Miscellaneous Materials							
Gelling Agt		Conc		Surfactant		Conc	Acid Type
Treatment Fld		Conc		Inhibitor		Conc	Sand Type
							Qty
							Conc %
							Size
							Qty
Fluid Data							
Stage/Plug #: 1							
Fluid #	Stage Type	Fluid Name		Qty	Qty uom	Mixing Density lbm/gal	Yield ft3/sk
							Mix Fluid Gal/sk
							Rate bbl/min
							Total Mix Fluid Gal/sk

**HALLIBURTON*****Cementing Job Summary***

Stage/Plug #: 1									
Fluid #	Stage Type	Fluid Name	Qty	Qty uom	Mixing Density lbm/gal	Yield ft <sup>3</sup> /sk	Mix Fluid Gal/sk	Rate bbl/min	Total Mix Fluid Gal/sk
1	Water Spacer		20.00	bbl	.	.0	.0	4	
2	Lead Cement	VERSACEM (TM) SYSTEM (452010)	160.0	sacks	12.3	2.38	13.75	6	13.75
	13.75 Gal	FRESH WATER							
3	Tail Cement	VERSACEM (TM) SYSTEM (452010)	160.0	sacks	12.8	2.11	11.75	6	11.75
4	Displacement		85.00	bbl	.	.0	.0	10	
Calculated Values		Pressures		Volumes					
Displacement	85.2	Shut In: Instant		Lost Returns		Cement Slurry	127.9	Pad	
Top Of Cement	SURFACE	5 Min		Cement Returns	30	Actual Displacement	85.2	Treatment	
Frac Gradient		15 Min		Spacers	20	Load and Breakdown		Total Job	233.1
Rates									
Circulating	RIG	Mixing	6	Displacement	10	Avg. Job	8		
Cement Left In Pipe	Amount	38.63 ft	Reason	Shoe Joint					
Frac Ring # 1 @	ID	Frac ring # 2 @	ID	Frac Ring # 3 @	ID	Frac Ring # 4 @	ID		
The Information Stated Herein Is Correct				Customer Representative Signature					



*The Road to Excellence Starts with Safety*

Sold To #: 300721	Ship To #: 2968977	Quote #:	Sales Order #: 900069498
Customer: WPX ENERGY ROCKY MOUNTAIN LLC-EBUS	Customer Rep: Oaks, Rick		
Well Name: RWF	Well #: 523-36	API/UWI #: 05-045-21484	
Field: RULISON	City (SAP): RIFLE	County/Parish: Garfield	State: Colorado
Legal Description:			
Lat: N 39.482 deg. OR N 39 deg. 28 min. 56.226 secs.		Long: W 107.837 deg. OR W -108 deg. 9 min. 47.959 secs.	
Contractor: NABORS 576	Rig/Platform Name/Num: NABORS 576		
Job Purpose: Cement Surface Casing	Ticket Amount:		
Well Type: Development Well	Job Type: Cement Surface Casing		
Sales Person: MAYO, MARK	Srv Supervisor: ARNOLD, EDWARD	MBU ID Emp #: 439784	

Activity Description	Date/Time	Cht #	Rate bbl/ min	Volume bbl		Pressure psig		Comments
				Stage	Total	Tubing	Casing	
Call Out	01/08/2013 07:30							Crew called out.
Pre-Convoy Safety Meeting	01/08/2013 10:00							Including entire cement crew, discuss hazards, route, and safety.
Crew Leave Yard	01/08/2013 10:30							Leave yard for location.
Arrive At Loc	01/08/2013 13:00							
Assessment Of Location Safety Meeting	01/08/2013 14:30							Including entire cement crew, discussed hazards, and rig up. Water Test: Ph. 7; KCL 250; SO4 <200; Fe 0; Calcium 120; Chlorides 0; Temp 42; TDS 250.
Pre-Rig Up Safety Meeting	01/08/2013 14:45							
Rig-Up Equipment	01/08/2013 14:50							1 Elite # 4; 1 660 Bulk Truck; 1 hard line to rig floor; 1 line to rig tank; 1 line to upright; 1 9 5/8" compact head.
Rig-Up Completed	01/08/2013 15:45							
Pre-Job Safety Meeting	01/08/2013 16:00							Including everyone on location. Discussed hazards, emergency situations, and job procedure.
Start Job	01/08/2013 16:15							TD 1142; TP 1122.83; SJ 38.63; OH 13 1/2"; CASING 9 5/8" 32.3# H40; MUD 9.9PPG.
Pump Water	01/08/2013 16:16		2	2			50.0	Fresh water ahead to fill lines.

Sold To #: 300721

Ship To #: 2968977

Quote #:

Sales Order #: 900069498

SUMMIT Version: 7.3.0070

Tuesday, January 15, 2013 03:34:00

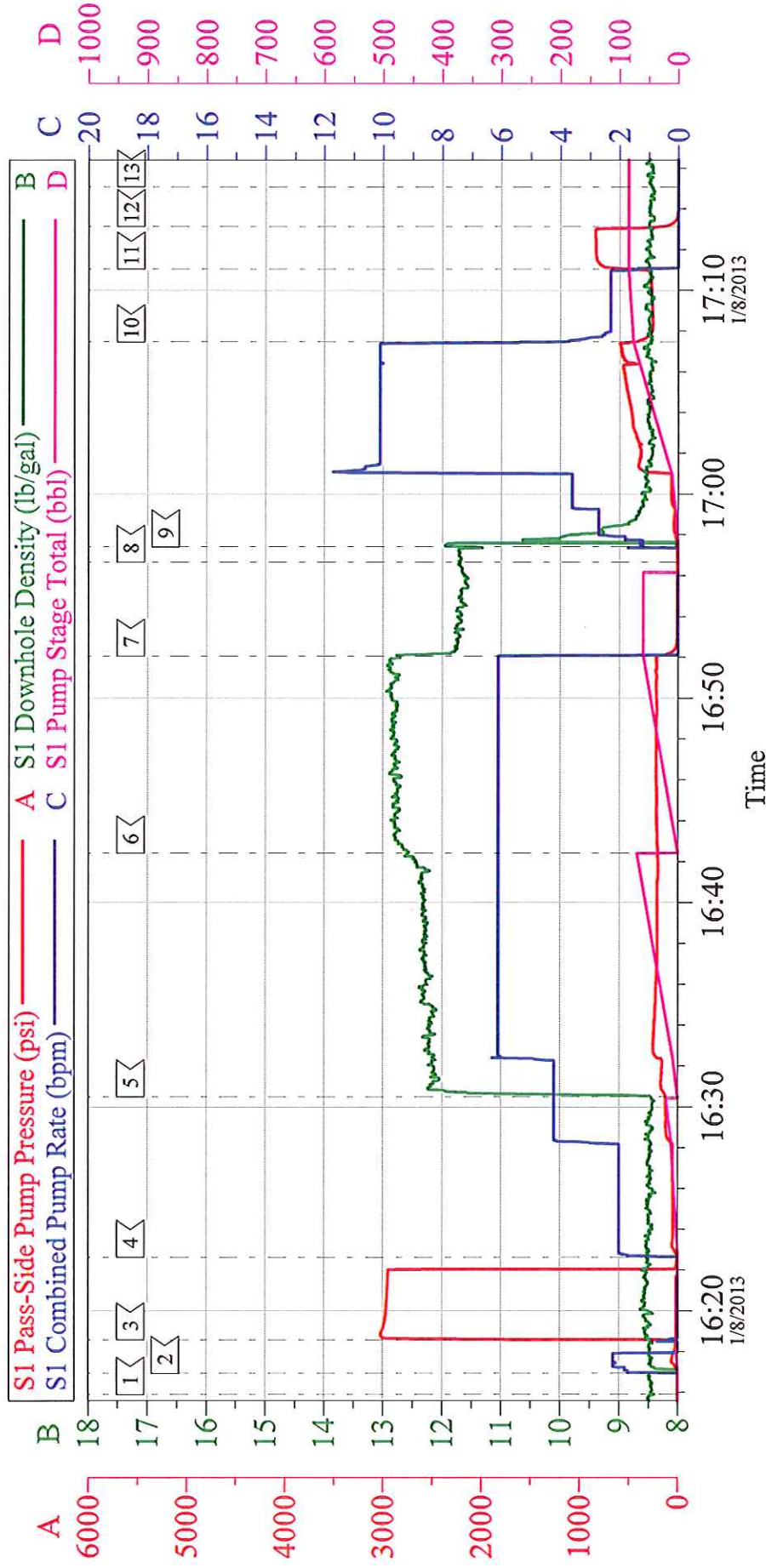
## Cementing Job Log

Activity Description	Date/Time	Cht #	Rate bbl/min	Volume bbl		Pressure psig		Comments
				Stage	Total	Tubing	Casing	
Test Lines	01/08/2013 16:18					3000.0		Test line to psi, Found no leaks, good test.
Pump Spacer 1	01/08/2013 16:22		4	20			125.0	20 BBL's fresh water.
Pump Lead Cement	01/08/2013 16:30		6	67.8			210.0	160 sks Lead cement, 12.3 ppg, 2.38 cf3, 13.75 gal/sk.
Pump Tail Cement	01/08/2013 16:42		6	60.1			230.0	160 sks Tail cement, 12.8 ppg, 2.11 cf3, 11.75 gal/sk.
Shutdown	01/08/2013 16:52							
Drop Plug	01/08/2013 16:56							Plug left Container.
Pump Displacement	01/08/2013 16:57		10	75.2			570.0	Fresh water displacement.
Slow Rate	01/08/2013 17:07		2	10			280.0	Slow rate last 10 BBL's of displacement prior to bumping the plug.
Bump Plug	01/08/2013 17:11				85.2		785.0	Plug landed. Took to psi. Used 100# of sugar.
Check Floats	01/08/2013 17:13							Floats Held. 1/2 BBL's back. 30 BBL's of good cement to surface.
End Job	01/08/2013 17:15							
Pre-Rig Down Safety Meeting	01/08/2013 17:20							Including entire cement crew, discussed hazards and safety.
Rig-Down Equipment	01/08/2013 18:20							
Pre-Convoy Safety Meeting	01/08/2013 18:25							Including entire cement crew, discussed hazards, route, and safety.
Crew Leave Location	01/08/2013 18:30							
Other	01/08/2013 18:30							Thank You for using Halliburton, Ed Arnold and Crew.



# WPX - RWF 523-36

9 5/8" SURFACE



## Local Event Log

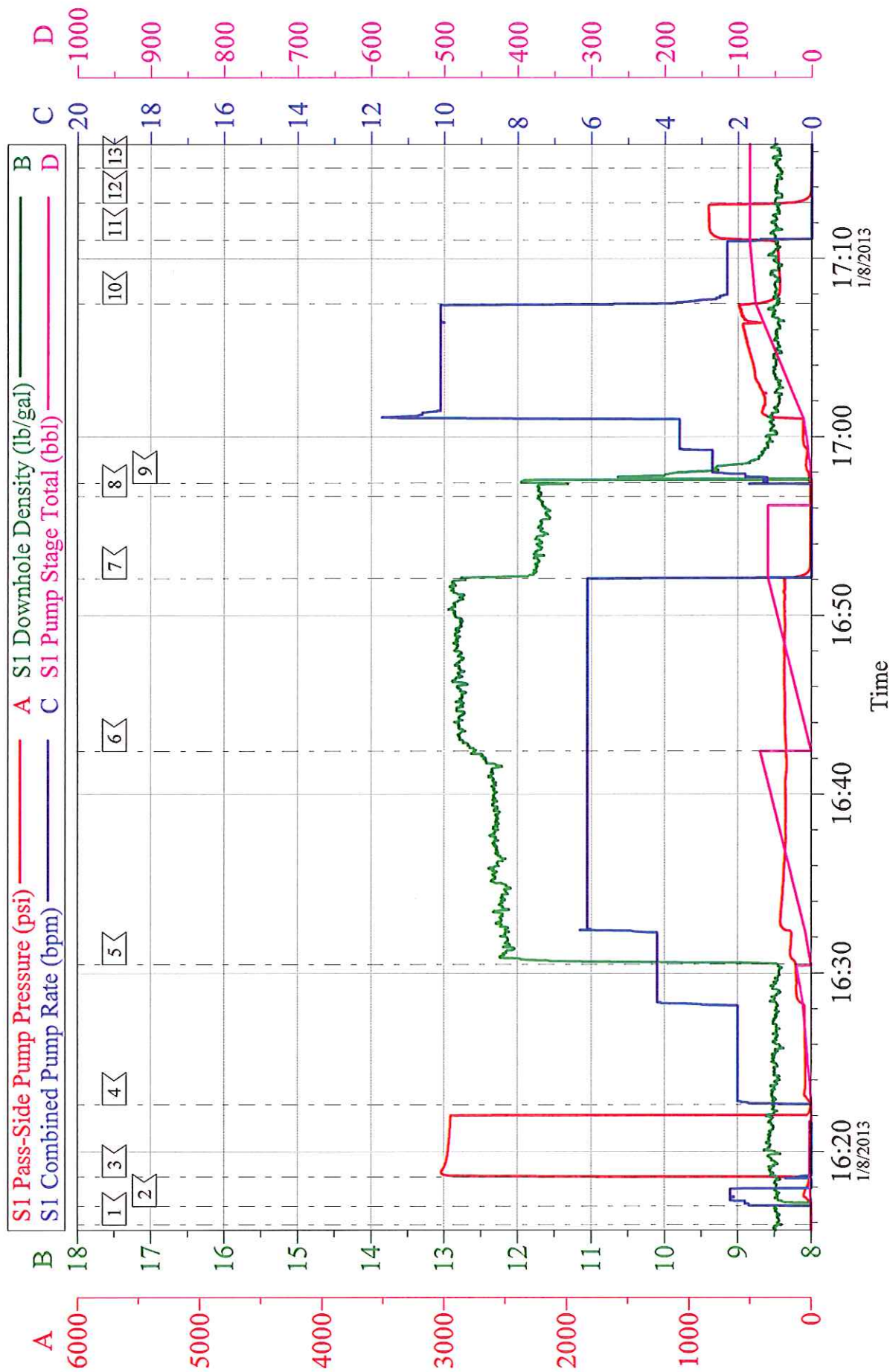
1	START JOB	16:15:54	2	FILL LINES	16:16:56	3	TEST LINES	16:18:34
4	H2O SPACER	16:22:38	5	LEAD CEMENT	16:30:29	6	TAIL CEMENT	16:42:25
7	SHUTDOWN	16:52:03	8	DROP PLUG	16:56:39	9	H2O DISPLACEMENT	16:57:24
10	SLOW RATE	17:07:28	11	BUMP PLUG	17:11:02	12	CHECK FLOATS	17:13:08
13	END JOB	17:15:05						

Customer: WPX	Job Date: 08-Jan-2013	Sales Order #: 900069498
Well Description: RWF 523-36	Job Type: SURFACE	ADC Used: YES
Company Rep: RICK OAKS	Cement Supervisor: ED ARNOLD	Elite #4: DAN SINCLAIR

OptiCem v6.4.10  
08-Jan-13 17:19

# WPX - RWF 523-36

9 5/8" SURFACE



Customer: WPX	Job Date: 08-Jan-2013	Sales Order #: 900069498
Well Description: RWF 523-36	Job Type: SURFACE	ADC Used: YES
Company Rep: RICK OAKS	Cement Supervisor: ED ARNOLD	Elite #4: DAN SINCLAIR