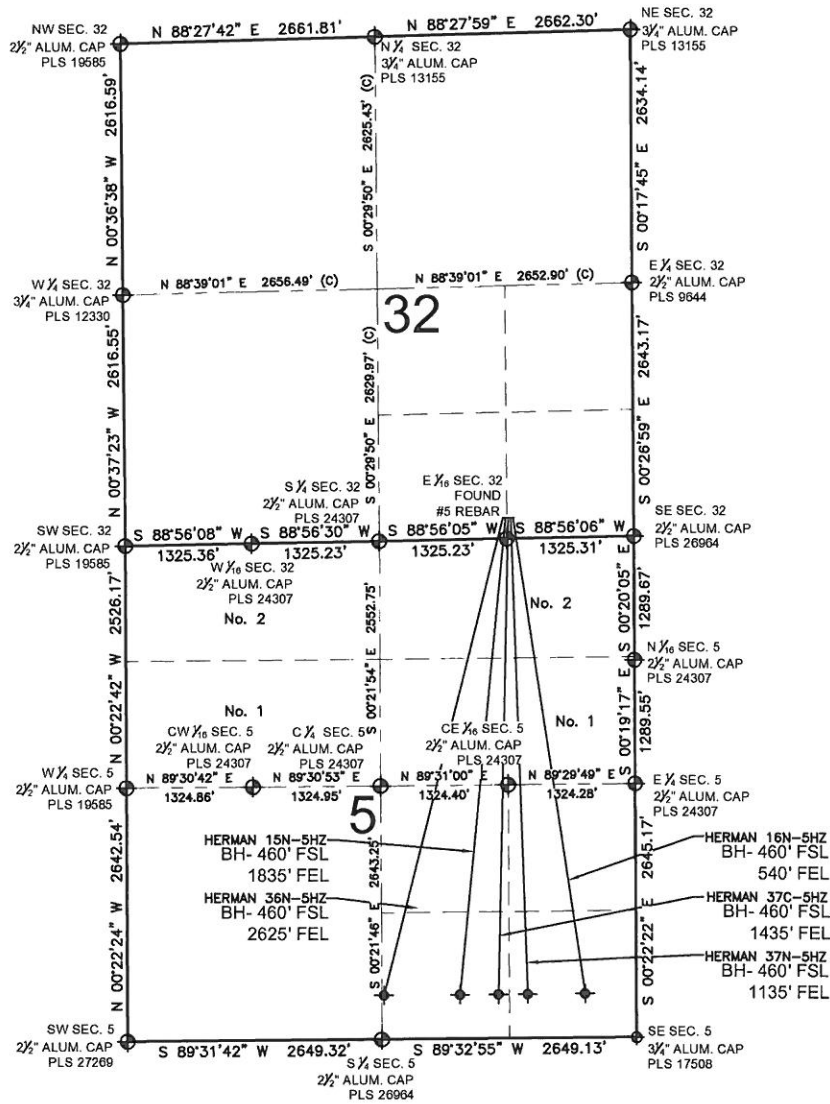


HERMAN 37N-5HZ MULTI-WELL PLAN

SECTION 32, TOWNSHIP 3 NORTH, RANGE 66 WEST, 6TH P.M.



NOTES:

- HERMAN 36N-5HZ TO BE AT 218' FSL, 1364' FEL.
- BOTTOM HOLE AT 460' FSL & 2625' FEL, SEC. 5, T2N, R66W.
- HERMAN 15N-5HZ TO BE AT 217' FSL, 1338' FEL.
- BOTTOM HOLE AT 460' FSL & 1835' FEL, SEC. 5, T2N, R66W.
- HERMAN 37C-5HZ TO BE AT 217' FSL, 1312' FEL.
- BOTTOM HOLE AT 460' FSL & 1435' FEL, SEC. 5, T2N, R66W.
- HERMAN 37N-5HZ TO BE AT 217' FSL, 1286' FEL.
- BOTTOM HOLE AT 460' FSL & 1135' FEL, SEC. 5, T2N, R66W.
- HERMAN 16N-5HZ TO BE AT 216' FSL, 1260' FEL.
- BOTTOM HOLE AT 460' FSL & 540' FEL, SEC. 5, T2N, R66W.

LEGEND

- ⊕ = EXISTING MONUMENT
- ⬠ = BOTTOM HOLE
- BH= BOTTOM HOLE
- = PROPOSED WELL
- ◆ = EXISTING WELL

PREPARED BY:



KERR-MCGEE OIL & GAS ONSHORE LP

FIELD DATE:

02-19-13

SURFACE LOCATION:

S1/2 SE1/4, SEC. 32, T3N, R66W, 6TH P.M.

DRAWING DATE:

04-03-13

WELD COUNTY, COLORADO

