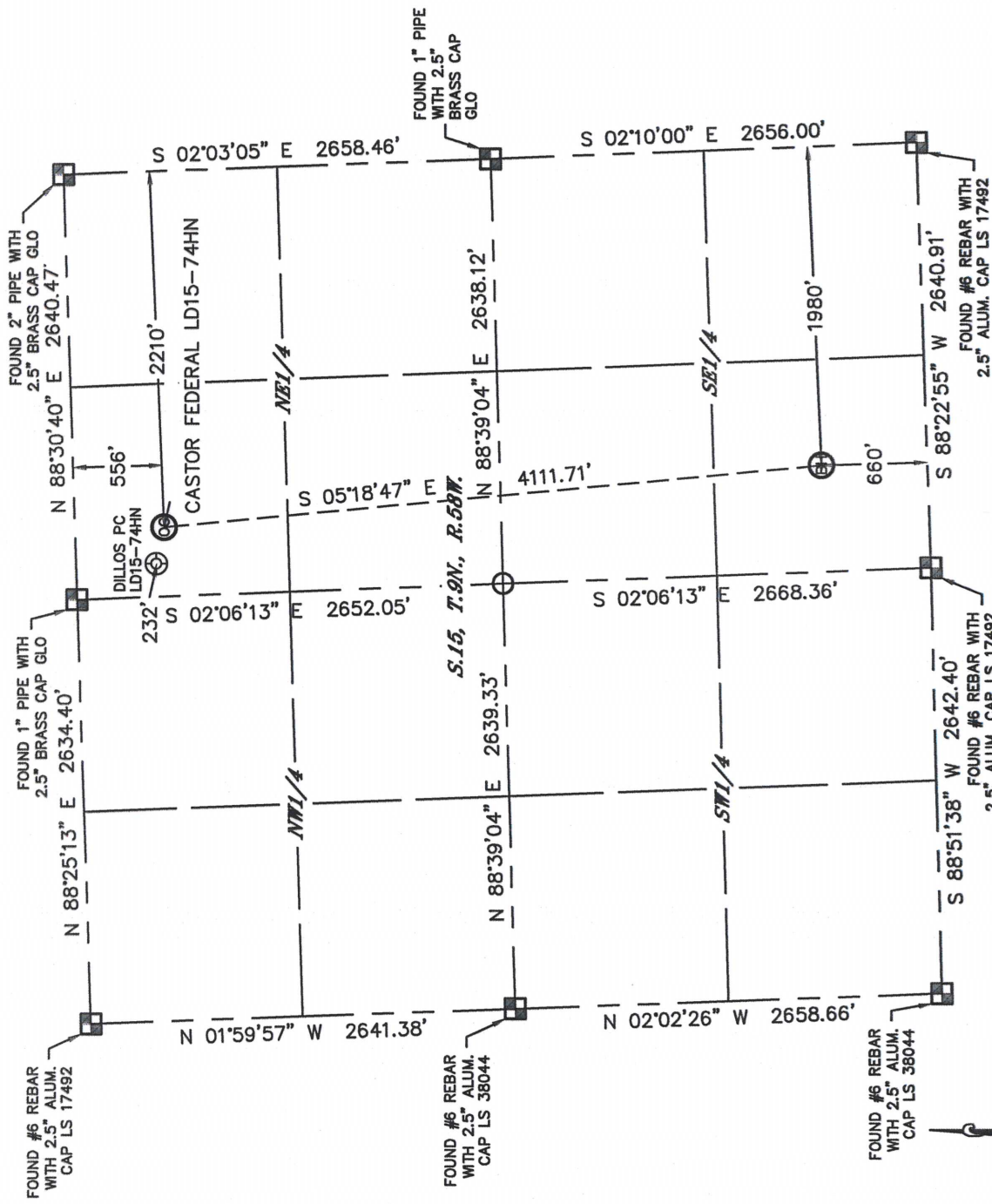


Lat40°, Inc. 1635 Foxtrail Drive, Suite 325 Loveland, CO 970-776-3321

WELL LOCATION CERTIFICATE

SECTION: 15
TOWNSHIP: 9N
RANGE: 58W

THIS MAP DOES NOT REPRESENT A BOUNDARY SURVEY



In accordance with a request from Matt Verbit with Noble Energy Inc. Lat40°, Inc. has determined the surface location of the CASTOR FEDERAL LD15-74HN to be 556' from the NORTH line and 2210' from the EAST line and the bottom hole to be 660' from the SOUTH line and 1980' from the EAST line as measured at right angles from the section lines of Section 15, Township 9 North, Range 58 West of the Sixth Principal Meridian, County of Weld, State of Colorado.

I hereby state that this Well Location Certificate was prepared by me, or under my direct supervision, that the fieldwork was completed on 12/11/2012, for and on behalf of Noble Energy Inc. That this is not a Land Survey Plat or an Improvement Survey Plat, and that it is not to be relied upon for establishment of fence, building, or other future improvement lines.



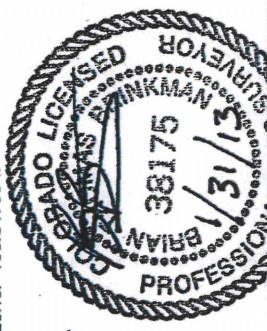
NOTE:

- 1) Bearings shown are Grid Bearings of the Colorado State Plane Coordinate System, North Zone, North American Datum 1983/2007. The lined dimensions as contained herein are based upon the "U.S. Survey Foot." (NAVD 1988 DATUM).
- 2) Ground elevations are based on an observed GPS elevation (NAVD 1988 DATUM).
- 3) NEAREST EXISTING WELL: DILLOS PC LD15-74HN, 232' 400' of disturbed area.
- 4) IMPROVEMENTS: See LOCATION DRAWING for all visible improvements within 400' of disturbed area.
- 5) SURFACE USE: RANGELAND
- 6) INSTRUMENT OPERATOR: BRIAN ROTTINGHAUS

SURFACE LOCATION

LAT: 40.75713N
LONG: 103.84786W
PROJ: 1.9
ELEV: 4707'
1/4, 1/4: NW1/NE1/4
NEAREST PROPERTY LINE: 430' WEST

BOTTOM HOLE
LAT: 40.74588N
LONG: 103.84786W



LEGEND

- = ALIQUOT MONUMENT AS DESCRIBED
- = CALCULATED POSITION

NOTE
According to Colorado law, you must commence any legal action based upon any defect in this W.L.C. within three years after you discover such defect. In no event, may any action based upon any defect in this survey be commenced more than ten years after the date of the certificate shown hereon. (13-80-105 C.R.S.)

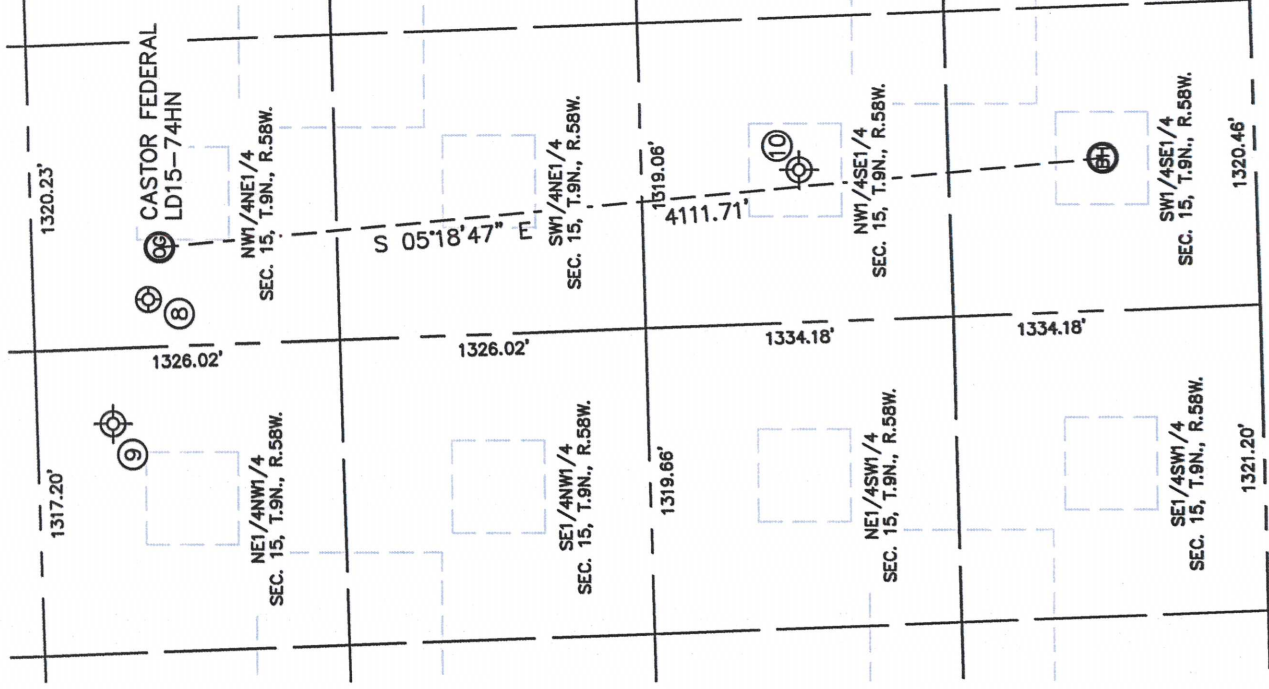
Brian T. Brinkman-On behalf of Lat40°
Colorado Licensed Professional
Land Surveyor No. 38175
DATE: 12/18/2012
PROJECT#: 2012159

Lat40°, Inc. 1635 Foxtrail Drive, Suite 325 Loveland, CO 970-776-3321

SITE SKETCH

SECTION: 15
TOWNSHIP: 9N
RANGE: 58W

CASTOR FEDERAL LD15-74HN



- ⑧ DILLOS PC LD15-74HN
NW1/4NE1/4
501' FNL
2435' FEL
LAT-40.75728N
LONG-103.84958W
PDOP: 1.8
ELEV: 4706'
- ⑨ BRADBURY 1
(Drilled & Abandoned)
NE1/4NW1/4
330' FNL (COGCC)
2310' FNL (COGCC)
LAT-40.75763N (COGCC)
LONG-103.85148W (COGCC)
PDOP: N/A
ELEV: 4707' (COGCC)
- ⑩ BRADBURY 1
(Drilled & Abandoned)
NW1/4SE1/4
1980' FSL (COGCC)
1980' FEL (COGCC)
LAT-40.74947N (COGCC)
LONG-103.84773W (COGCC)
PDOP: N/A
ELEV: 4678' (COGCC)



DATE: 1/31/2013
PROJECT#: 2012159