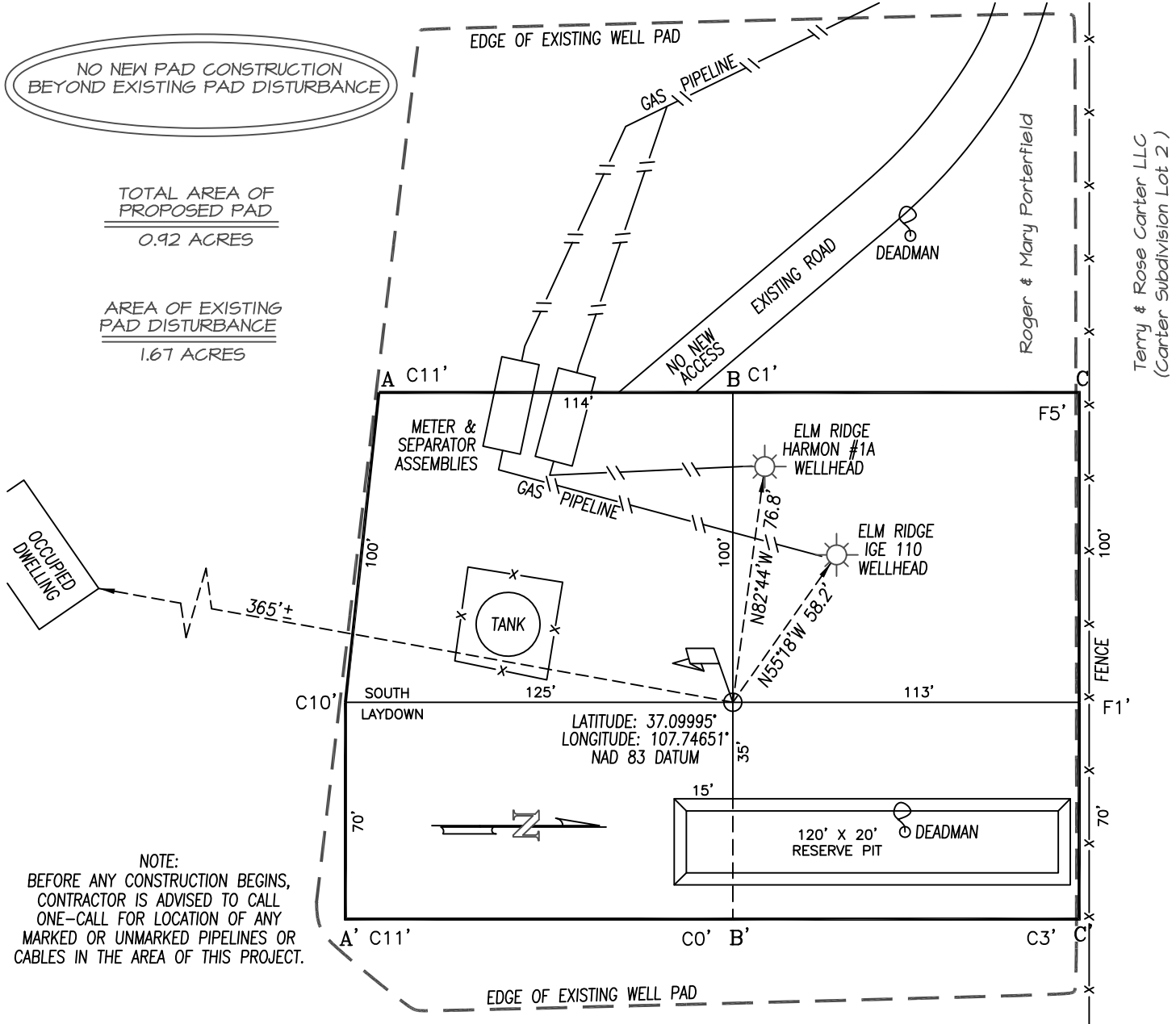


ELM RIDGE EXPLORATION COMPANY, LLC: IGE 140
1205' FSL, 1073' FWL, SECTION 17, T-33-N, R-8-W, N.M.P.M.,
LA PLATA COUNTY, CO. GROUND LEVEL ELEVATION: 6731'



NOTE:
BEFORE ANY CONSTRUCTION BEGINS,
CONTRACTOR IS ADVISED TO CALL
ONE-CALL FOR LOCATION OF ANY
MARKED OR UNMARKED PIPELINES OR
CABLES IN THE AREA OF THIS PROJECT.

A-A' ELEV. C/L

6741	[Profile]	
6731	[Profile]	
6721	[Profile]	

B-B'

6741	[Profile]	
6731	[Profile]	
6721	[Profile]	

C-C'

6741	[Profile]	
6731	[Profile]	
6721	[Profile]	

SCALE: 1" = 50'