

BONANZA CREEK ENERGY OPERATING

Well Name: **Pronghorn 14-11-4HNB**

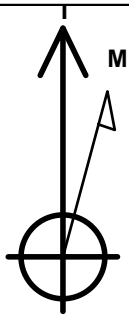
Surface Location: Pronghorn 14-11-4HNB Pad Sec.4-T5N-R61W
North American Datum 1983 , US State Plane 1983 , Colorado Northern Zone

Ground Elevation: 4643.0

+N/-S	+E/-W	Northing	Easting	Latitude	Longitude	Slot
0.0	0.0	1399851.98	3356742.05	40.423920	-104.218610	
RKB - 13' WELL @ 4656.0ft (RKB - 13')						

WELLBORE TARGET DETAILS

Name	TVD	+N/-S	+E/-W	Shape
BHL 470'FNL, 500'FWL	6122.0	4459.2	-910.3	Point
LANDING PT. 531'FSL & 500'FWL	6122.0	153.0	-910.4	Point



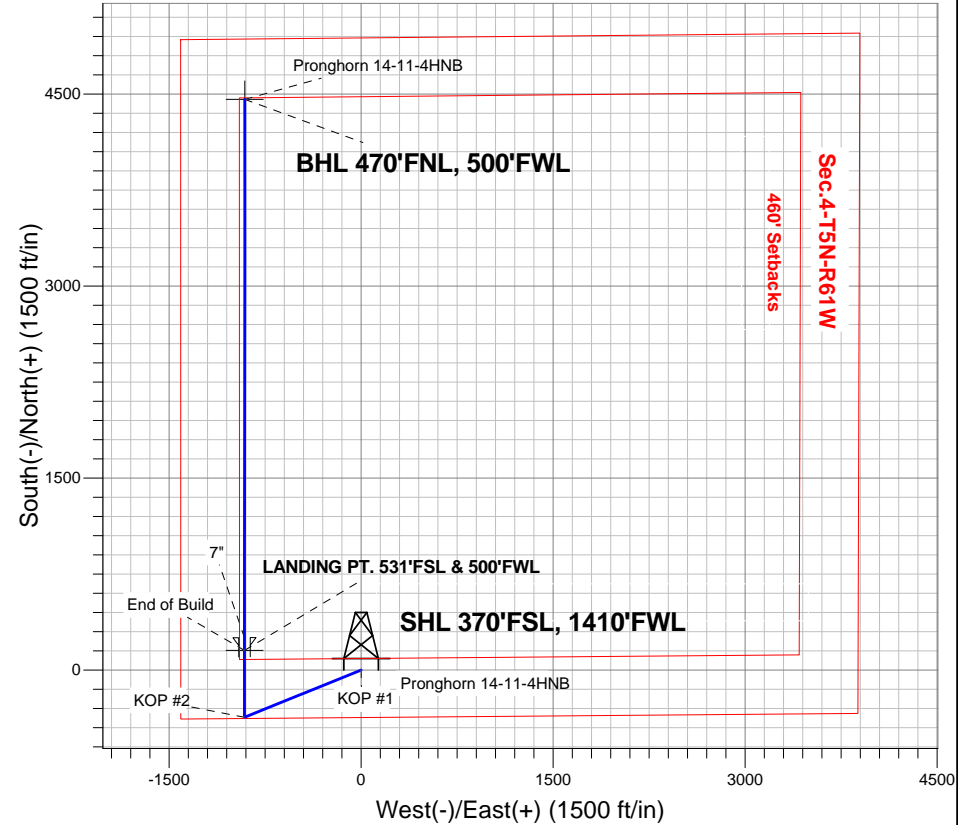
Azimuths to True North
Magnetic North: 8.32°

Magnetic Field
Strength: 53007.9nT
Dip Angle: 67.09°
Date: 4/19/2013
Model: IGRF2010

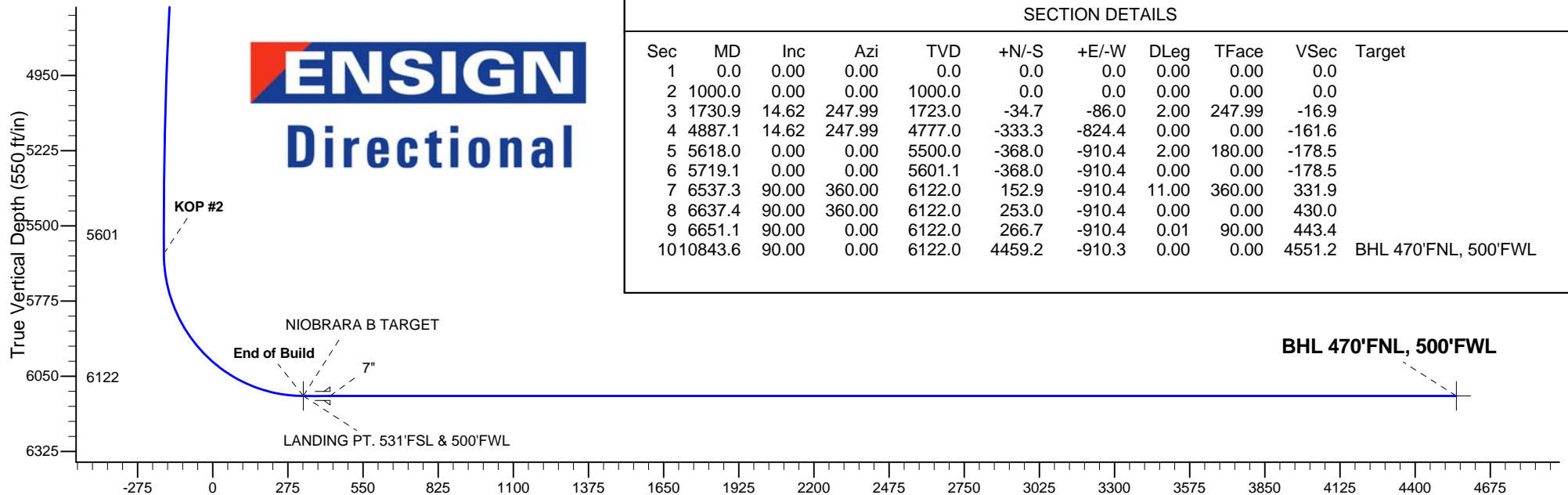
ANNOTATIONS

TVD	MD	Annotation
1000.0	1000.0	KOP #1
5601.1	5719.1	KOP #2
6122.0	6537.3	End of Build

Pronghorn 14-11-4HNB Pad Sec.4-T5N-R61W
Pronghorn 14-11-4HNB
Plan #1 (4-19-13)



ENSIGN
Directional



SECTION DETAILS

Sec	MD	Inc	Azi	TVD	+N/-S	+E/-W	DLeg	TFace	VSec	Target
1	0.0	0.00	0.00	0.0	0.0	0.0	0.00	0.00	0.0	
2	1000.0	0.00	0.00	1000.0	0.0	0.0	0.00	0.00	0.0	
3	1730.9	14.62	247.99	1723.0	-34.7	-86.0	2.00	247.99	-16.9	
4	4887.1	14.62	247.99	4777.0	-333.3	-824.4	0.00	0.00	-161.6	
5	5618.0	0.00	0.00	5500.0	-368.0	-910.4	2.00	180.00	-178.5	
6	5719.1	0.00	0.00	5601.1	-368.0	-910.4	0.00	0.00	-178.5	
7	6537.3	90.00	360.00	6122.0	152.9	-910.4	11.00	360.00	331.9	
8	6637.4	90.00	360.00	6122.0	253.0	-910.4	0.00	0.00	430.0	
9	6651.1	90.00	0.00	6122.0	266.7	-910.4	0.01	90.00	443.4	
10	10843.6	90.00	0.00	6122.0	4459.2	-910.3	0.00	0.00	4551.2	BHL 470'FNL, 500'FWL

Vertical Section at 348.46° (550 ft/in)



Directional

BONANZA CREEK ENERGY OPERATING

SEC.4-T5N-R61W

Pronghorn 14-11-4HNB Pad Sec.4-T5N-R61W

Pronghorn 14-11-4HNB

Wellbore #1

Plan: Plan #1 (4-19-13)

Standard Planning Report

19 April, 2013

Database:	Landmark	Local Co-ordinate Reference:	Well Pronghorn 14-11-4HNB
Company:	BONANZA CREEK ENERGY OPERATING	TVD Reference:	WELL @ 4656.0ft (RKB - 13')
Project:	SEC.4-T5N-R61W	MD Reference:	WELL @ 4656.0ft (RKB - 13')
Site:	Pronghorn 14-11-4HNB Pad Sec.4-T5N-R61W	North Reference:	True
Well:	Pronghorn 14-11-4HNB	Survey Calculation Method:	Minimum Curvature
Wellbore:	Wellbore #1		
Design:	Plan #1 (4-19-13)		

Project	SEC.4-T5N-R61W, Weld County, CO		
Map System:	US State Plane 1983	System Datum:	Mean Sea Level
Geo Datum:	North American Datum 1983		Using Well Reference Point
Map Zone:	Colorado Northern Zone		Using geodetic scale factor

Site						Pronghorn 14-11-4HNB Pad Sec.4-T5N-R61W											
Site Position:						Northing:			1,399,851.98 ft			Latitude:			40.423920		
From:			Lat/Long			Easting:			3,356,742.05 ft			Longitude:			-104.218610		
Position Uncertainty:			0.0 ft			Slot Radius:			"			Grid Convergence:			0.83 °		

Well	Pronghorn 14-11-4HNB					
Well Position	+N-S	0.0 ft	Northing:	1,399,851.98 ft	Latitude:	40.423920
	+E-W	0.0 ft	Easting:	3,356,742.05 ft	Longitude:	-104.218610
Position Uncertainty		0.0 ft	Wellhead Elevation:	ft	Ground Level:	4,643.0 ft

Wellbore	Wellbore #1				
Magnetics	Model Name	Sample Date	Declination (°)	Dip Angle (°)	Field Strength (nT)
	IGRF2010	4/19/2013	8.32	67.09	53,008

Design	Plan #1 (4-19-13)			
Audit Notes:				
Version:	Phase:	PROTOTYPE	Tie On Depth:	0.0
Vertical Section:	Depth From (TVD) (ft)	+N/-S (ft)	+E/-W (ft)	Direction (°)
	0.0	0.0	0.0	348.46

Plan Sections										
Measured Depth (ft)	Inclination (°)	Azimuth (°)	Vertical Depth (ft)	+N/-S (ft)	+E/-W (ft)	Dogleg Rate (°/100ft)	Build Rate (°/100ft)	Turn Rate (°/100ft)	TFO (°)	Target
0.0	0.00	0.00	0.0	0.0	0.0	0.00	0.00	0.00	0.00	
1,000.0	0.00	0.00	1,000.0	0.0	0.0	0.00	0.00	0.00	0.00	
1,730.9	14.62	247.99	1,723.0	-34.7	-86.0	2.00	2.00	0.00	247.99	
4,887.1	14.62	247.99	4,777.0	-333.3	-824.4	0.00	0.00	0.00	0.00	
5,618.0	0.00	0.00	5,500.0	-368.0	-910.4	2.00	-2.00	0.00	180.00	
5,719.1	0.00	0.00	5,601.1	-368.0	-910.4	0.00	0.00	0.00	0.00	
6,537.3	90.00	360.00	6,122.0	152.9	-910.4	11.00	11.00	0.00	360.00	
6,637.4	90.00	360.00	6,122.0	253.0	-910.4	0.00	0.00	0.00	0.00	
6,651.1	90.00	0.00	6,122.0	266.7	-910.4	0.01	0.00	0.01	90.00	
10,843.6	90.00	0.00	6,122.0	4,459.2	-910.3	0.00	0.00	0.00	0.00	BHL 470'FNL, 500'

Database:	Landmark	Local Co-ordinate Reference:	Well Pronghorn 14-11-4HNB
Company:	BONANZA CREEK ENERGY OPERATING	TVD Reference:	WELL @ 4656.0ft (RKB - 13')
Project:	SEC.4-T5N-R61W	MD Reference:	WELL @ 4656.0ft (RKB - 13')
Site:	Pronghorn 14-11-4HNB Pad	North Reference:	True
	Sec.4-T5N-R61W		
Well:	Pronghorn 14-11-4HNB	Survey Calculation Method:	Minimum Curvature
Wellbore:	Wellbore #1		
Design:	Plan #1 (4-19-13)		

Planned Survey									
Measured Depth (ft)	Inclination (°)	Azimuth (°)	Vertical Depth (ft)	+N/-S (ft)	+E/-W (ft)	Vertical Section (ft)	Dogleg Rate (°/100ft)	Build Rate (°/100ft)	Turn Rate (°/100ft)
0.0	0.00	0.00	0.0	0.0	0.0	0.0	0.00	0.00	0.00
40.0	0.00	0.00	40.0	0.0	0.0	0.0	0.00	0.00	0.00
80.0	0.00	0.00	80.0	0.0	0.0	0.0	0.00	0.00	0.00
120.0	0.00	0.00	120.0	0.0	0.0	0.0	0.00	0.00	0.00
160.0	0.00	0.00	160.0	0.0	0.0	0.0	0.00	0.00	0.00
200.0	0.00	0.00	200.0	0.0	0.0	0.0	0.00	0.00	0.00
240.0	0.00	0.00	240.0	0.0	0.0	0.0	0.00	0.00	0.00
280.0	0.00	0.00	280.0	0.0	0.0	0.0	0.00	0.00	0.00
320.0	0.00	0.00	320.0	0.0	0.0	0.0	0.00	0.00	0.00
360.0	0.00	0.00	360.0	0.0	0.0	0.0	0.00	0.00	0.00
400.0	0.00	0.00	400.0	0.0	0.0	0.0	0.00	0.00	0.00
440.0	0.00	0.00	440.0	0.0	0.0	0.0	0.00	0.00	0.00
480.0	0.00	0.00	480.0	0.0	0.0	0.0	0.00	0.00	0.00
520.0	0.00	0.00	520.0	0.0	0.0	0.0	0.00	0.00	0.00
560.0	0.00	0.00	560.0	0.0	0.0	0.0	0.00	0.00	0.00
600.0	0.00	0.00	600.0	0.0	0.0	0.0	0.00	0.00	0.00
640.0	0.00	0.00	640.0	0.0	0.0	0.0	0.00	0.00	0.00
680.0	0.00	0.00	680.0	0.0	0.0	0.0	0.00	0.00	0.00
720.0	0.00	0.00	720.0	0.0	0.0	0.0	0.00	0.00	0.00
760.0	0.00	0.00	760.0	0.0	0.0	0.0	0.00	0.00	0.00
800.0	0.00	0.00	800.0	0.0	0.0	0.0	0.00	0.00	0.00
840.0	0.00	0.00	840.0	0.0	0.0	0.0	0.00	0.00	0.00
880.0	0.00	0.00	880.0	0.0	0.0	0.0	0.00	0.00	0.00
920.0	0.00	0.00	920.0	0.0	0.0	0.0	0.00	0.00	0.00
960.0	0.00	0.00	960.0	0.0	0.0	0.0	0.00	0.00	0.00
1,000.0	0.00	0.00	1,000.0	0.0	0.0	0.0	0.00	0.00	0.00
KOP #1									
1,040.0	0.80	247.99	1,040.0	-0.1	-0.3	-0.1	2.00	2.00	0.00
1,080.0	1.60	247.99	1,080.0	-0.4	-1.0	-0.2	2.00	2.00	0.00
1,120.0	2.40	247.99	1,120.0	-0.9	-2.3	-0.5	2.00	2.00	0.00
1,160.0	3.20	247.99	1,159.9	-1.7	-4.1	-0.8	2.00	2.00	0.00
1,200.0	4.00	247.99	1,199.8	-2.6	-6.5	-1.3	2.00	2.00	0.00
1,240.0	4.80	247.99	1,239.7	-3.8	-9.3	-1.8	2.00	2.00	0.00
1,280.0	5.60	247.99	1,279.6	-5.1	-12.7	-2.5	2.00	2.00	0.00
1,320.0	6.40	247.99	1,319.3	-6.7	-16.6	-3.2	2.00	2.00	0.00
1,360.0	7.20	247.99	1,359.1	-8.5	-20.9	-4.1	2.00	2.00	0.00
1,400.0	8.00	247.99	1,398.7	-10.4	-25.8	-5.1	2.00	2.00	0.00
1,440.0	8.80	247.99	1,438.3	-12.6	-31.3	-6.1	2.00	2.00	0.00
1,480.0	9.60	247.99	1,477.8	-15.0	-37.2	-7.3	2.00	2.00	0.00
1,520.0	10.40	247.99	1,517.1	-17.6	-43.6	-8.6	2.00	2.00	0.00
1,560.0	11.20	247.99	1,556.4	-20.4	-50.6	-9.9	2.00	2.00	0.00
1,600.0	12.00	247.99	1,595.6	-23.5	-58.0	-11.4	2.00	2.00	0.00
1,640.0	12.80	247.99	1,634.7	-26.7	-66.0	-12.9	2.00	2.00	0.00
1,680.0	13.60	247.99	1,673.6	-30.1	-74.5	-14.6	2.00	2.00	0.00
1,720.0	14.40	247.99	1,712.4	-33.7	-83.4	-16.4	2.00	2.00	0.00
1,730.9	14.62	247.99	1,723.0	-34.7	-86.0	-16.9	2.00	2.00	0.00
1,760.0	14.62	247.99	1,751.2	-37.5	-92.8	-18.2	0.00	0.00	0.00
1,800.0	14.62	247.99	1,789.9	-41.3	-102.1	-20.0	0.00	0.00	0.00
1,840.0	14.62	247.99	1,828.6	-45.1	-111.5	-21.9	0.00	0.00	0.00
1,880.0	14.62	247.99	1,867.3	-48.9	-120.9	-23.7	0.00	0.00	0.00
1,920.0	14.62	247.99	1,906.0	-52.6	-130.2	-25.5	0.00	0.00	0.00
1,960.0	14.62	247.99	1,944.7	-56.4	-139.6	-27.4	0.00	0.00	0.00
2,000.0	14.62	247.99	1,983.4	-60.2	-148.9	-29.2	0.00	0.00	0.00

Database:	Landmark	Local Co-ordinate Reference:	Well Pronghorn 14-11-4HNB
Company:	BONANZA CREEK ENERGY OPERATING	TVD Reference:	WELL @ 4656.0ft (RKB - 13')
Project:	SEC.4-T5N-R61W	MD Reference:	WELL @ 4656.0ft (RKB - 13')
Site:	Pronghorn 14-11-4HNB Pad	North Reference:	True
	Sec.4-T5N-R61W		
Well:	Pronghorn 14-11-4HNB	Survey Calculation Method:	Minimum Curvature
Wellbore:	Wellbore #1		
Design:	Plan #1 (4-19-13)		

Planned Survey									
Measured Depth (ft)	Inclination (°)	Azimuth (°)	Vertical Depth (ft)	+N/-S (ft)	+E/-W (ft)	Vertical Section (ft)	Dogleg Rate (°/100ft)	Build Rate (°/100ft)	Turn Rate (°/100ft)
2,040.0	14.62	247.99	2,022.1	-64.0	-158.3	-31.0	0.00	0.00	0.00
2,080.0	14.62	247.99	2,060.8	-67.8	-167.7	-32.9	0.00	0.00	0.00
2,120.0	14.62	247.99	2,099.5	-71.6	-177.0	-34.7	0.00	0.00	0.00
2,160.0	14.62	247.99	2,138.2	-75.3	-186.4	-36.5	0.00	0.00	0.00
2,200.0	14.62	247.99	2,176.9	-79.1	-195.7	-38.4	0.00	0.00	0.00
2,240.0	14.62	247.99	2,215.6	-82.9	-205.1	-40.2	0.00	0.00	0.00
2,280.0	14.62	247.99	2,254.3	-86.7	-214.4	-42.0	0.00	0.00	0.00
2,320.0	14.62	247.99	2,293.0	-90.5	-223.8	-43.9	0.00	0.00	0.00
2,360.0	14.62	247.99	2,331.7	-94.2	-233.2	-45.7	0.00	0.00	0.00
2,400.0	14.62	247.99	2,370.4	-98.0	-242.5	-47.5	0.00	0.00	0.00
2,440.0	14.62	247.99	2,409.1	-101.8	-251.9	-49.4	0.00	0.00	0.00
2,480.0	14.62	247.99	2,447.9	-105.6	-261.2	-51.2	0.00	0.00	0.00
2,520.0	14.62	247.99	2,486.6	-109.4	-270.6	-53.0	0.00	0.00	0.00
2,560.0	14.62	247.99	2,525.3	-113.2	-280.0	-54.9	0.00	0.00	0.00
2,600.0	14.62	247.99	2,564.0	-116.9	-289.3	-56.7	0.00	0.00	0.00
2,640.0	14.62	247.99	2,602.7	-120.7	-298.7	-58.6	0.00	0.00	0.00
2,680.0	14.62	247.99	2,641.4	-124.5	-308.0	-60.4	0.00	0.00	0.00
2,720.0	14.62	247.99	2,680.1	-128.3	-317.4	-62.2	0.00	0.00	0.00
2,760.0	14.62	247.99	2,718.8	-132.1	-326.8	-64.1	0.00	0.00	0.00
2,800.0	14.62	247.99	2,757.5	-135.9	-336.1	-65.9	0.00	0.00	0.00
2,840.0	14.62	247.99	2,796.2	-139.6	-345.5	-67.7	0.00	0.00	0.00
2,880.0	14.62	247.99	2,834.9	-143.4	-354.8	-69.6	0.00	0.00	0.00
2,920.0	14.62	247.99	2,873.6	-147.2	-364.2	-71.4	0.00	0.00	0.00
2,960.0	14.62	247.99	2,912.3	-151.0	-373.5	-73.2	0.00	0.00	0.00
3,000.0	14.62	247.99	2,951.0	-154.8	-382.9	-75.1	0.00	0.00	0.00
3,040.0	14.62	247.99	2,989.7	-158.6	-392.3	-76.9	0.00	0.00	0.00
3,080.0	14.62	247.99	3,028.4	-162.3	-401.6	-78.7	0.00	0.00	0.00
3,120.0	14.62	247.99	3,067.1	-166.1	-411.0	-80.6	0.00	0.00	0.00
3,160.0	14.62	247.99	3,105.8	-169.9	-420.3	-82.4	0.00	0.00	0.00
3,200.0	14.62	247.99	3,144.5	-173.7	-429.7	-84.2	0.00	0.00	0.00
3,240.0	14.62	247.99	3,183.3	-177.5	-439.1	-86.1	0.00	0.00	0.00
3,280.0	14.62	247.99	3,222.0	-181.3	-448.4	-87.9	0.00	0.00	0.00
3,320.0	14.62	247.99	3,260.7	-185.0	-457.8	-89.7	0.00	0.00	0.00
3,360.0	14.62	247.99	3,299.4	-188.8	-467.1	-91.6	0.00	0.00	0.00
3,400.0	14.62	247.99	3,338.1	-192.6	-476.5	-93.4	0.00	0.00	0.00
3,440.0	14.62	247.99	3,376.8	-196.4	-485.9	-95.2	0.00	0.00	0.00
3,480.0	14.62	247.99	3,415.5	-200.2	-495.2	-97.1	0.00	0.00	0.00
3,520.0	14.62	247.99	3,454.2	-204.0	-504.6	-98.9	0.00	0.00	0.00
3,560.0	14.62	247.99	3,492.9	-207.7	-513.9	-100.8	0.00	0.00	0.00
3,600.0	14.62	247.99	3,531.6	-211.5	-523.3	-102.6	0.00	0.00	0.00
3,640.0	14.62	247.99	3,570.3	-215.3	-532.6	-104.4	0.00	0.00	0.00
3,680.0	14.62	247.99	3,609.0	-219.1	-542.0	-106.3	0.00	0.00	0.00
3,720.0	14.62	247.99	3,647.7	-222.9	-551.4	-108.1	0.00	0.00	0.00
3,760.0	14.62	247.99	3,686.4	-226.7	-560.7	-109.9	0.00	0.00	0.00
3,800.0	14.62	247.99	3,725.1	-230.4	-570.1	-111.8	0.00	0.00	0.00
3,840.0	14.62	247.99	3,763.8	-234.2	-579.4	-113.6	0.00	0.00	0.00
3,880.0	14.62	247.99	3,802.5	-238.0	-588.8	-115.4	0.00	0.00	0.00
3,920.0	14.62	247.99	3,841.2	-241.8	-598.2	-117.3	0.00	0.00	0.00
3,960.0	14.62	247.99	3,879.9	-245.6	-607.5	-119.1	0.00	0.00	0.00
4,000.0	14.62	247.99	3,918.7	-249.4	-616.9	-120.9	0.00	0.00	0.00
4,040.0	14.62	247.99	3,957.4	-253.1	-626.2	-122.8	0.00	0.00	0.00
4,080.0	14.62	247.99	3,996.1	-256.9	-635.6	-124.6	0.00	0.00	0.00
4,120.0	14.62	247.99	4,034.8	-260.7	-645.0	-126.4	0.00	0.00	0.00

Database:	Landmark	Local Co-ordinate Reference:	Well Pronghorn 14-11-4HNB
Company:	BONANZA CREEK ENERGY OPERATING	TVD Reference:	WELL @ 4656.0ft (RKB - 13')
Project:	SEC.4-T5N-R61W	MD Reference:	WELL @ 4656.0ft (RKB - 13')
Site:	Pronghorn 14-11-4HNB Pad	North Reference:	True
	Sec.4-T5N-R61W		
Well:	Pronghorn 14-11-4HNB	Survey Calculation Method:	Minimum Curvature
Wellbore:	Wellbore #1		
Design:	Plan #1 (4-19-13)		

Planned Survey

Measured Depth (ft)	Inclination (°)	Azimuth (°)	Vertical Depth (ft)	+N/-S (ft)	+E/-W (ft)	Vertical Section (ft)	Dogleg Rate (°/100ft)	Build Rate (°/100ft)	Turn Rate (°/100ft)
4,160.0	14.62	247.99	4,073.5	-264.5	-654.3	-128.3	0.00	0.00	0.00
4,200.0	14.62	247.99	4,112.2	-268.3	-663.7	-130.1	0.00	0.00	0.00
4,240.0	14.62	247.99	4,150.9	-272.1	-673.0	-131.9	0.00	0.00	0.00
4,280.0	14.62	247.99	4,189.6	-275.8	-682.4	-133.8	0.00	0.00	0.00
4,320.0	14.62	247.99	4,228.3	-279.6	-691.7	-135.6	0.00	0.00	0.00
4,360.0	14.62	247.99	4,267.0	-283.4	-701.1	-137.4	0.00	0.00	0.00
4,400.0	14.62	247.99	4,305.7	-287.2	-710.5	-139.3	0.00	0.00	0.00
4,440.0	14.62	247.99	4,344.4	-291.0	-719.8	-141.1	0.00	0.00	0.00
4,480.0	14.62	247.99	4,383.1	-294.7	-729.2	-142.9	0.00	0.00	0.00
4,520.0	14.62	247.99	4,421.8	-298.5	-738.5	-144.8	0.00	0.00	0.00
4,560.0	14.62	247.99	4,460.5	-302.3	-747.9	-146.6	0.00	0.00	0.00
4,600.0	14.62	247.99	4,499.2	-306.1	-757.3	-148.5	0.00	0.00	0.00
4,640.0	14.62	247.99	4,537.9	-309.9	-766.6	-150.3	0.00	0.00	0.00
4,680.0	14.62	247.99	4,576.6	-313.7	-776.0	-152.1	0.00	0.00	0.00
4,720.0	14.62	247.99	4,615.3	-317.4	-785.3	-154.0	0.00	0.00	0.00
4,760.0	14.62	247.99	4,654.1	-321.2	-794.7	-155.8	0.00	0.00	0.00
4,800.0	14.62	247.99	4,692.8	-325.0	-804.1	-157.6	0.00	0.00	0.00
4,840.0	14.62	247.99	4,731.5	-328.8	-813.4	-159.5	0.00	0.00	0.00
4,880.0	14.62	247.99	4,770.2	-332.6	-822.8	-161.3	0.00	0.00	0.00
4,887.1	14.62	247.99	4,777.0	-333.3	-824.4	-161.6	0.00	0.00	0.00
4,920.0	13.96	247.99	4,808.9	-336.3	-832.0	-163.1	2.00	-2.00	0.00
4,960.0	13.16	247.99	4,847.8	-339.8	-840.7	-164.8	2.00	-2.00	0.00
5,000.0	12.36	247.99	4,886.8	-343.1	-848.8	-166.4	2.00	-2.00	0.00
5,040.0	11.56	247.99	4,925.9	-346.2	-856.5	-167.9	2.00	-2.00	0.00
5,080.0	10.76	247.99	4,965.2	-349.1	-863.7	-169.3	2.00	-2.00	0.00
5,120.0	9.96	247.99	5,004.5	-351.8	-870.4	-170.6	2.00	-2.00	0.00
5,160.0	9.16	247.99	5,044.0	-354.3	-876.5	-171.8	2.00	-2.00	0.00
5,200.0	8.36	247.99	5,083.5	-356.6	-882.2	-172.9	2.00	-2.00	0.00
5,240.0	7.56	247.99	5,123.1	-358.7	-887.3	-174.0	2.00	-2.00	0.00
5,280.0	6.76	247.99	5,162.8	-360.5	-891.9	-174.9	2.00	-2.00	0.00
5,320.0	5.96	247.99	5,202.6	-362.2	-896.0	-175.7	2.00	-2.00	0.00
5,360.0	5.16	247.99	5,242.4	-363.7	-899.6	-176.4	2.00	-2.00	0.00
5,400.0	4.36	247.99	5,282.2	-364.9	-902.7	-177.0	2.00	-2.00	0.00
5,440.0	3.56	247.99	5,322.2	-365.9	-905.3	-177.5	2.00	-2.00	0.00
5,480.0	2.76	247.99	5,362.1	-366.8	-907.3	-177.9	2.00	-2.00	0.00
5,520.0	1.96	247.99	5,402.1	-367.4	-908.8	-178.2	2.00	-2.00	0.00
5,560.0	1.16	247.99	5,442.0	-367.8	-909.9	-178.4	2.00	-2.00	0.00
5,600.0	0.36	247.99	5,482.0	-368.0	-910.3	-178.5	2.00	-2.00	0.00
5,618.0	0.00	0.00	5,500.0	-368.0	-910.4	-178.5	2.00	-2.00	0.00
5,640.0	0.00	0.00	5,522.0	-368.0	-910.4	-178.5	0.00	0.00	0.00
5,680.0	0.00	0.00	5,562.0	-368.0	-910.4	-178.5	0.00	0.00	0.00
5,719.1	0.00	0.00	5,601.1	-368.0	-910.4	-178.5	0.00	0.00	0.00
KOP #2									
5,720.0	0.10	0.00	5,602.0	-368.0	-910.4	-178.5	11.10	11.10	0.00
5,760.0	4.50	360.00	5,642.0	-366.4	-910.4	-176.9	11.00	11.00	0.00
5,800.0	8.90	360.00	5,681.7	-361.7	-910.4	-172.3	11.00	11.00	0.00
5,840.0	13.30	360.00	5,721.0	-354.0	-910.4	-164.8	11.00	11.00	0.00
5,880.0	17.70	360.00	5,759.5	-343.3	-910.4	-154.3	11.00	11.00	0.00
5,920.0	22.10	360.00	5,797.1	-329.7	-910.4	-141.0	11.00	11.00	0.00
5,960.0	26.50	360.00	5,833.5	-313.3	-910.4	-124.9	11.00	11.00	0.00
6,000.0	30.90	360.00	5,868.6	-294.1	-910.4	-106.0	11.00	11.00	0.00
6,040.0	35.30	360.00	5,902.1	-272.2	-910.4	-84.6	11.00	11.00	0.00
6,080.0	39.70	360.00	5,933.8	-247.9	-910.4	-60.8	11.00	11.00	0.00

Database:	Landmark	Local Co-ordinate Reference:	Well Pronghorn 14-11-4HNB
Company:	BONANZA CREEK ENERGY OPERATING	TVD Reference:	WELL @ 4656.0ft (RKB - 13')
Project:	SEC.4-T5N-R61W	MD Reference:	WELL @ 4656.0ft (RKB - 13')
Site:	Pronghorn 14-11-4HNB Pad Sec.4-T5N-R61W	North Reference:	True
Well:	Pronghorn 14-11-4HNB	Survey Calculation Method:	Minimum Curvature
Wellbore:	Wellbore #1		
Design:	Plan #1 (4-19-13)		

Planned Survey									
Measured Depth (ft)	Inclination (°)	Azimuth (°)	Vertical Depth (ft)	+N/-S (ft)	+E/-W (ft)	Vertical Section (ft)	Dogleg Rate (°/100ft)	Build Rate (°/100ft)	Turn Rate (°/100ft)
6,120.0	44.10	360.00	5,963.6	-221.2	-910.4	-34.6	11.00	11.00	0.00
6,160.0	48.50	360.00	5,991.2	-192.3	-910.4	-6.3	11.00	11.00	0.00
6,200.0	52.90	360.00	6,016.6	-161.3	-910.4	24.0	11.00	11.00	0.00
6,240.0	57.30	360.00	6,039.4	-128.5	-910.4	56.2	11.00	11.00	0.00
6,280.0	61.70	360.00	6,059.7	-94.1	-910.4	89.9	11.00	11.00	0.00
6,320.0	66.10	360.00	6,077.3	-58.2	-910.4	125.1	11.00	11.00	0.00
6,360.0	70.50	360.00	6,092.1	-21.0	-910.4	161.5	11.00	11.00	0.00
6,400.0	74.90	360.00	6,104.0	17.2	-910.4	198.9	11.00	11.00	0.00
6,440.0	79.30	360.00	6,112.9	56.2	-910.4	237.1	11.00	11.00	0.00
6,480.0	83.70	360.00	6,118.9	95.7	-910.4	275.9	11.00	11.00	0.00
6,520.0	88.10	360.00	6,121.7	135.6	-910.4	314.9	11.00	11.00	0.00
6,537.3	90.00	360.00	6,122.0	152.9	-910.4	331.9	11.00	11.00	0.00
End of Build - NIOBRARA B TARGET									
6,560.0	90.00	360.00	6,122.0	175.6	-910.4	354.1	0.00	0.00	0.00
6,600.0	90.00	360.00	6,122.0	215.6	-910.4	393.3	0.00	0.00	0.00
6,637.4	90.00	360.00	6,122.0	253.0	-910.4	430.0	0.00	0.00	0.00
7"									
6,640.0	90.00	360.00	6,122.0	255.6	-910.4	432.5	0.00	0.00	0.00
6,651.1	90.00	0.00	6,122.0	266.7	-910.4	443.4	0.01	0.00	0.01
6,680.0	90.00	0.00	6,122.0	295.6	-910.4	471.7	0.00	0.00	0.00
6,720.0	90.00	0.00	6,122.0	335.6	-910.4	510.9	0.00	0.00	0.00
6,760.0	90.00	0.00	6,122.0	375.6	-910.4	550.1	0.00	0.00	0.00
6,800.0	90.00	0.00	6,122.0	415.6	-910.4	589.3	0.00	0.00	0.00
6,840.0	90.00	0.00	6,122.0	455.6	-910.4	628.5	0.00	0.00	0.00
6,880.0	90.00	0.00	6,122.0	495.6	-910.4	667.7	0.00	0.00	0.00
6,920.0	90.00	0.00	6,122.0	535.6	-910.4	706.9	0.00	0.00	0.00
6,960.0	90.00	0.00	6,122.0	575.6	-910.4	746.1	0.00	0.00	0.00
7,000.0	90.00	0.00	6,122.0	615.6	-910.4	785.2	0.00	0.00	0.00
7,040.0	90.00	0.00	6,122.0	655.6	-910.4	824.4	0.00	0.00	0.00
7,080.0	90.00	0.00	6,122.0	695.6	-910.4	863.6	0.00	0.00	0.00
7,120.0	90.00	0.00	6,122.0	735.6	-910.4	902.8	0.00	0.00	0.00
7,160.0	90.00	0.00	6,122.0	775.6	-910.4	942.0	0.00	0.00	0.00
7,200.0	90.00	0.00	6,122.0	815.6	-910.4	981.2	0.00	0.00	0.00
7,240.0	90.00	0.00	6,122.0	855.6	-910.4	1,020.4	0.00	0.00	0.00
7,280.0	90.00	0.00	6,122.0	895.6	-910.4	1,059.6	0.00	0.00	0.00
7,320.0	90.00	0.00	6,122.0	935.6	-910.4	1,098.8	0.00	0.00	0.00
7,360.0	90.00	0.00	6,122.0	975.6	-910.4	1,138.0	0.00	0.00	0.00
7,400.0	90.00	0.00	6,122.0	1,015.6	-910.4	1,177.2	0.00	0.00	0.00
7,440.0	90.00	0.00	6,122.0	1,055.6	-910.4	1,216.4	0.00	0.00	0.00
7,480.0	90.00	0.00	6,122.0	1,095.6	-910.4	1,255.5	0.00	0.00	0.00
7,520.0	90.00	0.00	6,122.0	1,135.6	-910.4	1,294.7	0.00	0.00	0.00
7,560.0	90.00	0.00	6,122.0	1,175.6	-910.4	1,333.9	0.00	0.00	0.00
7,600.0	90.00	0.00	6,122.0	1,215.6	-910.4	1,373.1	0.00	0.00	0.00
7,640.0	90.00	0.00	6,122.0	1,255.6	-910.4	1,412.3	0.00	0.00	0.00
7,680.0	90.00	0.00	6,122.0	1,295.6	-910.4	1,451.5	0.00	0.00	0.00
7,720.0	90.00	0.00	6,122.0	1,335.6	-910.4	1,490.7	0.00	0.00	0.00
7,760.0	90.00	0.00	6,122.0	1,375.6	-910.4	1,529.9	0.00	0.00	0.00
7,800.0	90.00	0.00	6,122.0	1,415.6	-910.4	1,569.1	0.00	0.00	0.00
7,840.0	90.00	0.00	6,122.0	1,455.6	-910.4	1,608.3	0.00	0.00	0.00
7,880.0	90.00	0.00	6,122.0	1,495.6	-910.4	1,647.5	0.00	0.00	0.00
7,920.0	90.00	0.00	6,122.0	1,535.6	-910.4	1,686.6	0.00	0.00	0.00
7,960.0	90.00	0.00	6,122.0	1,575.6	-910.4	1,725.8	0.00	0.00	0.00
8,000.0	90.00	0.00	6,122.0	1,615.6	-910.4	1,765.0	0.00	0.00	0.00

Database:	Landmark	Local Co-ordinate Reference:	Well Pronghorn 14-11-4HNB
Company:	BONANZA CREEK ENERGY OPERATING	TVD Reference:	WELL @ 4656.0ft (RKB - 13')
Project:	SEC.4-T5N-R61W	MD Reference:	WELL @ 4656.0ft (RKB - 13')
Site:	Pronghorn 14-11-4HNB Pad Sec.4-T5N-R61W	North Reference:	True
Well:	Pronghorn 14-11-4HNB	Survey Calculation Method:	Minimum Curvature
Wellbore:	Wellbore #1		
Design:	Plan #1 (4-19-13)		

Planned Survey										
Measured Depth (ft)	Inclination (°)	Azimuth (°)	Vertical Depth (ft)	+N/-S (ft)	+E/-W (ft)	Vertical Section (ft)	Dogleg Rate (°/100ft)	Build Rate (°/100ft)	Turn Rate (°/100ft)	
8,040.0	90.00	0.00	6,122.0	1,655.6	-910.4	1,804.2	0.00	0.00	0.00	
8,080.0	90.00	0.00	6,122.0	1,695.6	-910.4	1,843.4	0.00	0.00	0.00	
8,120.0	90.00	0.00	6,122.0	1,735.6	-910.4	1,882.6	0.00	0.00	0.00	
8,160.0	90.00	0.00	6,122.0	1,775.6	-910.4	1,921.8	0.00	0.00	0.00	
8,200.0	90.00	0.00	6,122.0	1,815.6	-910.4	1,961.0	0.00	0.00	0.00	
8,240.0	90.00	0.00	6,122.0	1,855.6	-910.4	2,000.2	0.00	0.00	0.00	
8,280.0	90.00	0.00	6,122.0	1,895.6	-910.4	2,039.4	0.00	0.00	0.00	
8,320.0	90.00	0.00	6,122.0	1,935.6	-910.4	2,078.6	0.00	0.00	0.00	
8,360.0	90.00	0.00	6,122.0	1,975.6	-910.4	2,117.8	0.00	0.00	0.00	
8,400.0	90.00	0.00	6,122.0	2,015.6	-910.3	2,156.9	0.00	0.00	0.00	
8,440.0	90.00	0.00	6,122.0	2,055.6	-910.3	2,196.1	0.00	0.00	0.00	
8,480.0	90.00	0.00	6,122.0	2,095.6	-910.3	2,235.3	0.00	0.00	0.00	
8,520.0	90.00	0.00	6,122.0	2,135.6	-910.3	2,274.5	0.00	0.00	0.00	
8,560.0	90.00	0.00	6,122.0	2,175.6	-910.3	2,313.7	0.00	0.00	0.00	
8,600.0	90.00	0.00	6,122.0	2,215.6	-910.3	2,352.9	0.00	0.00	0.00	
8,640.0	90.00	0.00	6,122.0	2,255.6	-910.3	2,392.1	0.00	0.00	0.00	
8,680.0	90.00	0.00	6,122.0	2,295.6	-910.3	2,431.3	0.00	0.00	0.00	
8,720.0	90.00	0.00	6,122.0	2,335.6	-910.3	2,470.5	0.00	0.00	0.00	
8,760.0	90.00	0.00	6,122.0	2,375.6	-910.3	2,509.7	0.00	0.00	0.00	
8,800.0	90.00	0.00	6,122.0	2,415.6	-910.3	2,548.9	0.00	0.00	0.00	
8,840.0	90.00	0.00	6,122.0	2,455.6	-910.3	2,588.1	0.00	0.00	0.00	
8,880.0	90.00	0.00	6,122.0	2,495.6	-910.3	2,627.2	0.00	0.00	0.00	
8,920.0	90.00	0.00	6,122.0	2,535.6	-910.3	2,666.4	0.00	0.00	0.00	
8,960.0	90.00	0.00	6,122.0	2,575.6	-910.3	2,705.6	0.00	0.00	0.00	
9,000.0	90.00	0.00	6,122.0	2,615.6	-910.3	2,744.8	0.00	0.00	0.00	
9,040.0	90.00	0.00	6,122.0	2,655.6	-910.3	2,784.0	0.00	0.00	0.00	
9,080.0	90.00	0.00	6,122.0	2,695.6	-910.3	2,823.2	0.00	0.00	0.00	
9,120.0	90.00	0.00	6,122.0	2,735.6	-910.3	2,862.4	0.00	0.00	0.00	
9,160.0	90.00	0.00	6,122.0	2,775.6	-910.3	2,901.6	0.00	0.00	0.00	
9,200.0	90.00	0.00	6,122.0	2,815.6	-910.3	2,940.8	0.00	0.00	0.00	
9,240.0	90.00	0.00	6,122.0	2,855.6	-910.3	2,980.0	0.00	0.00	0.00	
9,280.0	90.00	0.00	6,122.0	2,895.6	-910.3	3,019.2	0.00	0.00	0.00	
9,320.0	90.00	0.00	6,122.0	2,935.6	-910.3	3,058.4	0.00	0.00	0.00	
9,360.0	90.00	0.00	6,122.0	2,975.6	-910.3	3,097.5	0.00	0.00	0.00	
9,400.0	90.00	0.00	6,122.0	3,015.6	-910.3	3,136.7	0.00	0.00	0.00	
9,440.0	90.00	0.00	6,122.0	3,055.6	-910.3	3,175.9	0.00	0.00	0.00	
9,480.0	90.00	0.00	6,122.0	3,095.6	-910.3	3,215.1	0.00	0.00	0.00	
9,520.0	90.00	0.00	6,122.0	3,135.6	-910.3	3,254.3	0.00	0.00	0.00	
9,560.0	90.00	0.00	6,122.0	3,175.6	-910.3	3,293.5	0.00	0.00	0.00	
9,600.0	90.00	0.00	6,122.0	3,215.6	-910.3	3,332.7	0.00	0.00	0.00	
9,640.0	90.00	0.00	6,122.0	3,255.6	-910.3	3,371.9	0.00	0.00	0.00	
9,680.0	90.00	0.00	6,122.0	3,295.6	-910.3	3,411.1	0.00	0.00	0.00	
9,720.0	90.00	0.00	6,122.0	3,335.6	-910.3	3,450.3	0.00	0.00	0.00	
9,760.0	90.00	0.00	6,122.0	3,375.6	-910.3	3,489.5	0.00	0.00	0.00	
9,800.0	90.00	0.00	6,122.0	3,415.6	-910.3	3,528.7	0.00	0.00	0.00	
9,840.0	90.00	0.00	6,122.0	3,455.6	-910.3	3,567.8	0.00	0.00	0.00	
9,880.0	90.00	0.00	6,122.0	3,495.6	-910.3	3,607.0	0.00	0.00	0.00	
9,920.0	90.00	0.00	6,122.0	3,535.6	-910.3	3,646.2	0.00	0.00	0.00	
9,960.0	90.00	0.00	6,122.0	3,575.6	-910.3	3,685.4	0.00	0.00	0.00	
10,000.0	90.00	0.00	6,122.0	3,615.6	-910.3	3,724.6	0.00	0.00	0.00	
10,040.0	90.00	0.00	6,122.0	3,655.6	-910.3	3,763.8	0.00	0.00	0.00	
10,080.0	90.00	0.00	6,122.0	3,695.6	-910.3	3,803.0	0.00	0.00	0.00	
10,120.0	90.00	0.00	6,122.0	3,735.6	-910.3	3,842.2	0.00	0.00	0.00	

Plan Annotations					
	Measured Depth (ft)	Vertical Depth (ft)	Local Coordinates		Comment
			+N/-S	+E/-W	
			(ft)	(ft)	
	1,000.0	1,000.0	0.0	0.0	KOP #1
	5,719.1	5,601.1	-368.0	-910.4	KOP #2
	6,537.3	6,122.0	152.9	-910.4	End of Build