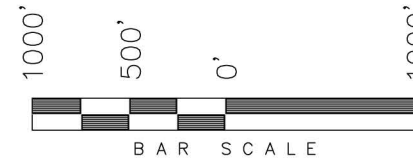
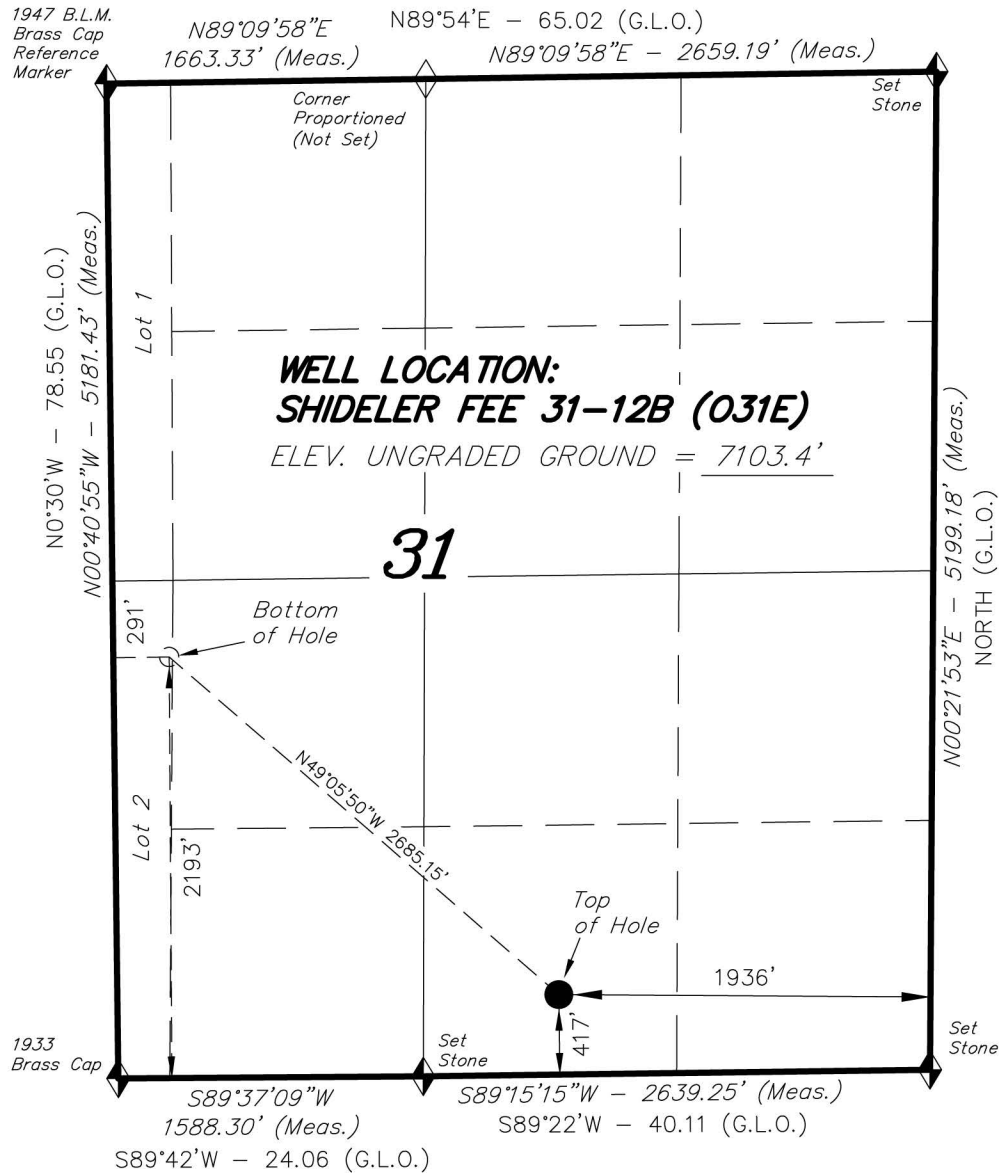


# T7S, R92W, 6th P.M.

ENCANA OIL & GAS (USA) INC

WELL LOCATION, SHIDELER FEE 31-12B (O31E), LOCATED AS SHOWN IN THE SW 1/4 SE 1/4 OF SECTION 31, T7S, R92W, 6th P.M. GARFIELD COUNTY, COLORADO.

TARGET BOTTOM HOLE, SHIDELER FEE 31-12B (O31E), LOCATED AS SHOWN IN LOT 2 OF SECTION 31, T7S, R92W, 6th P.M. GARFIELD COUNTY, COLORADO.



**NOTES:**

1. Well footages are measured at right angles to the Section Lines.
2. Bearings are based on Global Positioning Satellite observations.
3. G.P.S. Operator: C.D. Slauch, (PDOP) = 2.9

THIS IS TO CERTIFY THAT THE ABOVE PLAT WAS PREPARED FROM FIELD NOTES OF ACTUAL SURVEYS MADE BY ME OR UNDER MY SUPERVISION. THE LOCATION HAS BEEN STAKED ON THE GROUND AS SHOWN ON THE PLAT, AND THAT THE SAID ARE TRUE AND CORRECT TO THE BEST OF MY KNOWLEDGE AND BELIEF.

*Surveyor Signature*  
 # 30125  
 REGISTERED LAND SURVEYOR  
 REGISTRATION No. 30125  
 STATE OF COLORADO LAND SURVEYOR

◆ = SECTION CORNERS LOCATED

Basis of elevation is the Rifle 2 Triangulation Station. 39°31'53.80" N Lat. & 107°47'07.78" W Long. (NAD 83). Elevation = 5323.1' (NAVD88).

NAD 83 (SURFACE LOCATION)	
LATITUDE =	39°23'48.96" (39.396933°)
LONGITUDE =	107°42'20.92" (107.705811°)
NAD 83 (BOTTOM HOLE LOCATION)	
LATITUDE =	39°24'06.35" (39.401763°)
LONGITUDE =	107°42'46.74" (107.712985°)

**TRI STATE LAND SURVEYING & CONSULTING**  
 180 NORTH VERNAL AVE. - VERNAL, UTAH 84078  
 (435) 781-2501

DATE SURVEYED: 11-13-10	SURVEYED BY: C.D.S	SHEET <b>10</b> OF 37
DATE DRAWN: 11-16-11	DRAWN BY: M.W.	
REVISED: 09-17-12 M.W.	SCALE: 1" = 1000'	