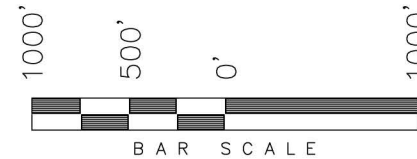
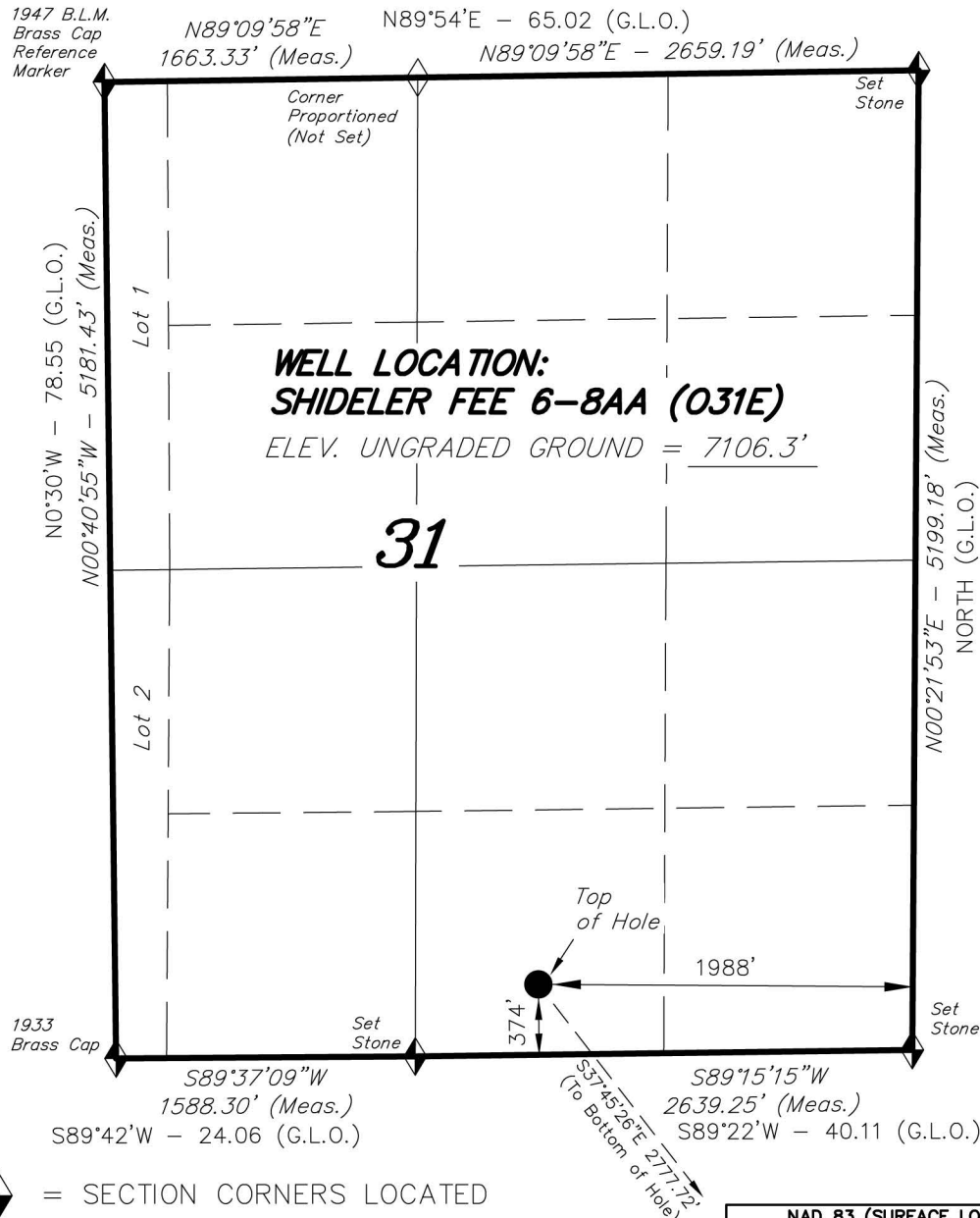


T7S, R92W, 6th P.M.

ENCANA OIL & GAS (USA) INC

WELL LOCATION, SHIDELER FEE 6-8AA (O31E), LOCATED AS SHOWN IN THE SW 1/4 SE 1/4 OF SECTION 31, T7S, R92W, 6th P.M. GARFIELD COUNTY, COLORADO.



NOTES:

1. Well footages are measured at right angles to the Section Lines.
2. Bearings are based on Global Positioning Satellite observations.
3. G.P.S. Operator: C.D. Slauch, (PDOP) = 2.9

THIS IS TO CERTIFY THAT THE ABOVE PLAT WAS PREPARED FROM FIELD NOTES OF REAL SURVEYS MADE BY ME OR UNDER MY SUPERVISION. THE LOCATION HAS BEEN STAKED ON THE GROUND AS SHOWN ON THE PLAT, AND THAT THE SAID NOTES ARE TRUE AND CORRECT TO THE BEST OF MY KNOWLEDGE AND BELIEF.

09-17-12
30125
REGISTERED LAND SURVEYOR
REGISTRATION NO. 30125
STATE OF COLORADO
LAND SURVEYOR

◆ = SECTION CORNERS LOCATED

Basis of elevation is the Rifle 2 Triangulation Station. 39°31'53.80" N Lat. & 107°47'07.78" W Long. (NAD 83). Elevation = 5323.1' (NAVD88).

NAD 83 (SURFACE LOCATION)	
LATITUDE =	39°23'48.53" (39.396813°)
LONGITUDE =	107°42'21.58" (107.705995°)

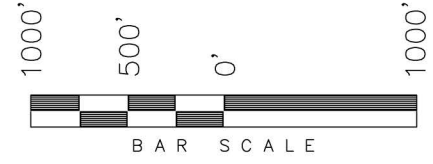
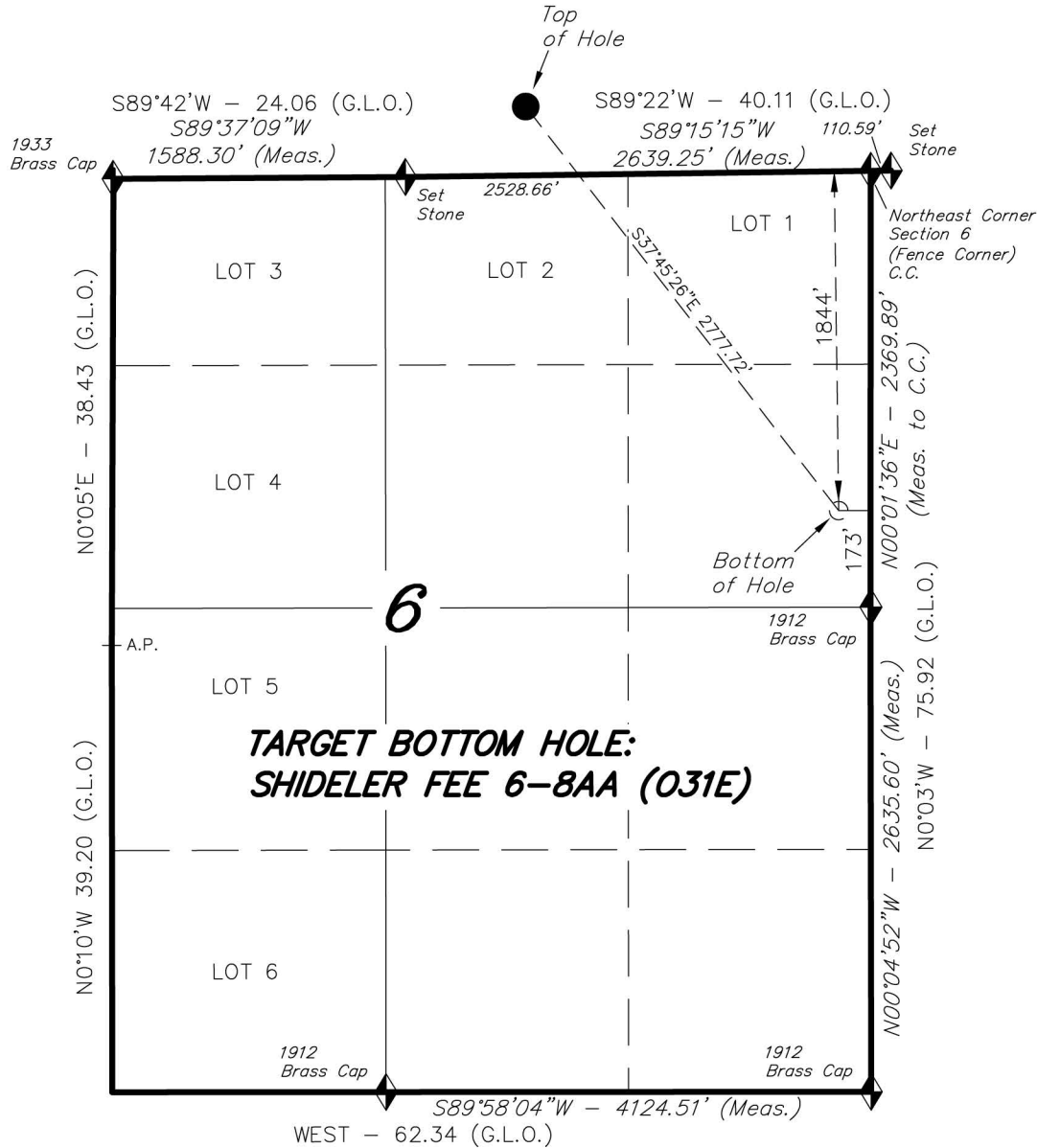
TRI STATE LAND SURVEYING & CONSULTING
180 NORTH VERNAL AVE. - VERNAL, UTAH 84078
(435) 781-2501

DATE SURVEYED: 11-13-10	SURVEYED BY: C.D.S	SHEET 19
DATE DRAWN: 11-16-11	DRAWN BY: M.W.	
REVISED: 09-17-12 M.W.	SCALE: 1" = 1000'	OF 37

T8S, R92W, 6th P.M.

ENCANA OIL & GAS (USA) INC

TARGET BOTTOM HOLE, SHIDELER FEE 6-8AA (O31E), LOCATED AS SHOWN IN THE SE 1/4 NE 1/4 OF SECTION 6, T8S, R92W, 6th P.M. GARFIELD COUNTY, COLORADO.



- NOTES:**
1. Well footages are measured at right angles to the Section Lines.
 2. Bearings are based on Global Positioning Satellite observations.

**TARGET BOTTOM HOLE:
SHIDELER FEE 6-8AA (O31E)**

THIS IS TO CERTIFY THAT THE ABOVE PLAT WAS PREPARED FROM FIELD NOTES OF ACTUAL SURVEYS MADE BY ME OR UNDER MY SUPERVISION. THE LOCATION HAS BEEN STAKED ON THE GROUND AS SHOWN ON THE PLAT, AND THAT THE SAID ARE TRUE AND CORRECT TO THE BEST OF MY KNOWLEDGE AND BELIEF.

Steve L. ...
 REGISTERED LAND SURVEYOR
 REGISTRATION NO. 30125
 STATE OF COLORADO
 # 09-17-12-1
 # 30125

◆ = SECTION CORNERS LOCATED

Basis of elevation is the Rifle 2 Triangulation Station. 39°31'53.80" N Lat. & 107°47'07.78" W Long. (NAD 83). Elevation = 5323.1' (NAVD88).

NAD 83 (BOTTOM HOLE LOCATION)	
LATITUDE	= 39°23'26.81" (39.390782°)
LONGITUDE	= 107°41'59.95" (107.699986°)

TRI STATE LAND SURVEYING & CONSULTING		
180 NORTH VERNAL AVE. - VERNAL, UTAH 84078		
(435) 781-2501		
DATE SURVEYED: 11-13-10	SURVEYED BY: C.D.S	SHEET 19a
DATE DRAWN: 11-16-11	DRAWN BY: M.W.	
REVISED: 09-17-12 M.W.	SCALE: 1" = 1000'	OF 37